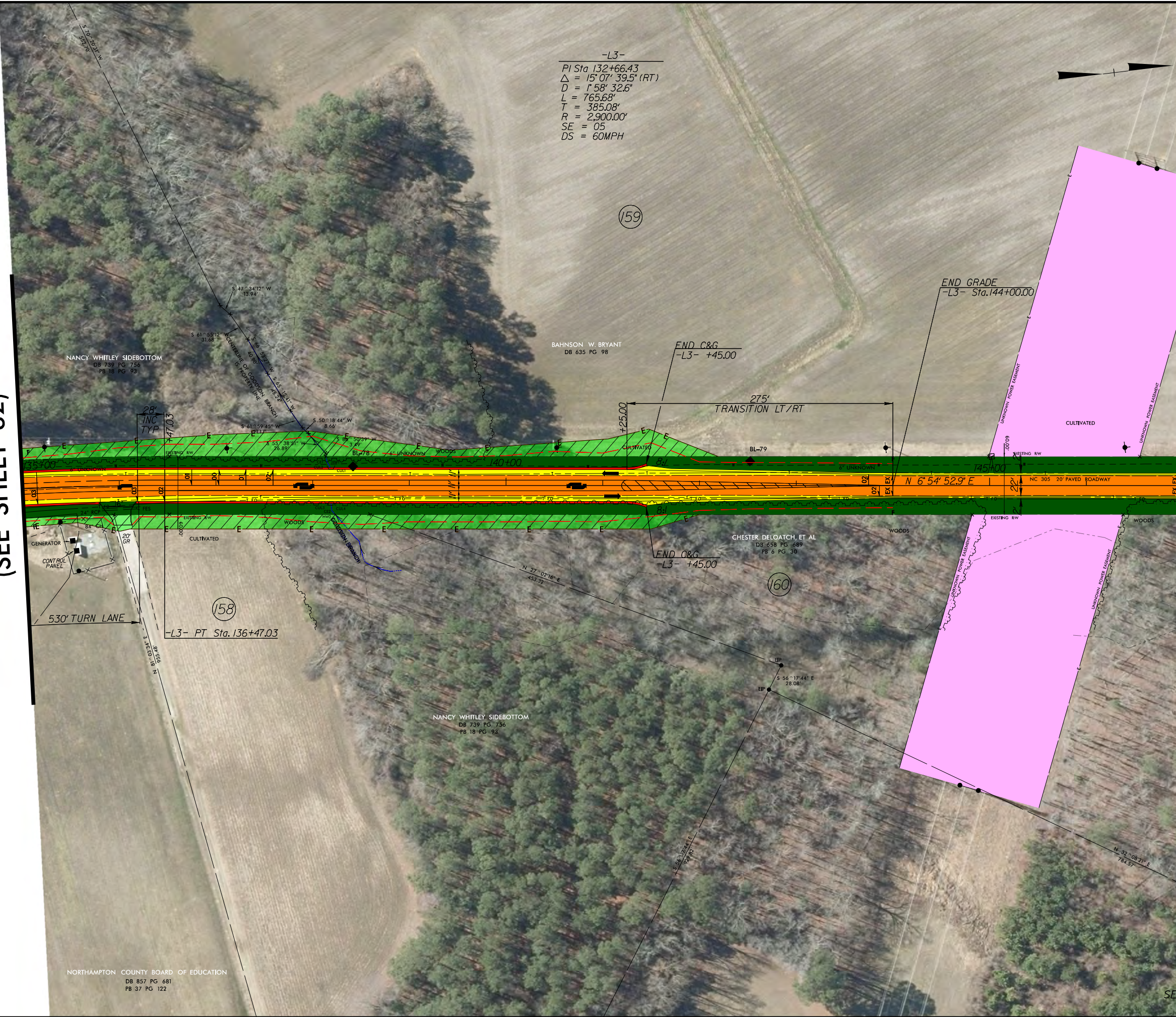


8/17/99

REVISIONS

8:55:59 SYSTEMS 8/17/99
R-5757 RD 158-33.PHM.dgn
SPENCER.MERITT

MATCHLINE -L3- STA 135+00.00
(SEE SHEET 32)



-L3-
 PI Sta 132+66.43
 $\Delta = 15^{\circ}07'39.5''$ (RT)
 $D = 158'32.6''$
 $L = 765.68'$
 $T = 385.08'$
 $R = 2,900.00'$
 $SE = 05$
 $DS = 60MPH$

PROJECT REFERENCE NO. R-5757	SHEET NO. 33
RW SHEET NO.	
ROADWAY DESIGN ENGINEER	HYDRAULICS ENGINEER
INCOMPLETE PLANS DO NOT USE FOR R/W ACQUISITION	
DOCUMENT NOT CONSIDERED FINAL UNLESS ALL SIGNATURES COMPLETED	
Prepared in the Office of: 	NC FIRM LICENSE No. P-0339 504 Meadows Drive Hillsborough, NC 27278 (919) 332-3883 (919) 732-6676 (FAX)

NORTHAMPTON COUNTY BOARD OF EDUCATION
 DB 857 PG 681
 PB 37 PG 122

MATCHLINE -L3- STA 147+00.00
(SEE SHEET 34)

SEE SHEET 56 FOR -L3-2- PROFILE