

Raleigh Public Art Plan Public Art Questionnaire Final Report

DRAFT 3/21/2021

Todd W. Bressi and Via Partnership, LLP

DRAFT

Purpose and Methodology

As part of the outreach process of developing the Public Art Plan for Raleigh Arts, the project consultants, Todd W. Bressi and Via Partnership, conducted an online questionnaire. The questions were designed to help the consultants and Raleigh Arts better understand the public's view on public art, where public art would have an impact in the city, and what locations are of most interest for future public art opportunities. The questionnaire was launched on January 18, 2021 and was up through February 28, 2021. The questionnaire received 793 responses, of which 264 were partial.

Though not designed to be a statistically significant sample of the Raleigh population, it is worth noting that the demographics of survey respondents differs from the demographics of the city population. The survey respondents were 85% white, compared with 53.5% of the population (2018). Respondents were also overwhelmingly female (68.6%).

The questionnaire asked five questions related to people's preferences for public art:

- Which examples are you familiar with? Please click on each image you recognize. (Respondents were shown 15 examples of artwork in Raleigh).
- (Respondents were shown 18 examples of public art from other cities). Of these projects, pick up to five that you think are visually interesting and represent the type of art that you think would be successful in Raleigh.
- What is the IMPACT that public art should have in Raleigh? (Respondents were asked to indicate four preferences from a list of 15 options)
- What AREAS of Raleigh are the best opportunities for public artworks? (Respondents were asked to indicate four preferences from a list of 13 options)
- What TYPES of artwork would you like to see in Raleigh? (Respondents were asked to indicate four preferences from a list of 12 options)

The questionnaire also asked three open-ended questions designed to gauge people's preferences for public art and places that are important for the consulting team to understand and consider.

- Which is your favorite public artwork in Raleigh and why?
- What public spaces are most important to you and why?
- What is one place that you would like to see a public art project in Raleigh?

Findings

Several themes emerge from the questionnaire results that cut across multiple questions and help us understand people's preferences related to public art.

Active and Interactive Artwork

Responses to the survey point to a strong interest in artwork that activates public spaces and artwork that has interactive or immersive qualities.

Among the top four works of art from other cities that respondents identified as being "visually interesting and represent the type of art you think would be successful in Raleigh" (Q3) were the Northern Spark Festival (41.5%) and Patrick Dougherty's *Muskrat Ramble* (40.0%), both works that are participatory and interactive by nature. Also among the top four was Olalekan Jeyifous's *Wrought, Knit, Labors, Legacies*, which has an immersive quality, incorporating an entire plaza and ground plane as well as seating. When asked why they chose these works (Q4), the second, third and fourth reasons were *interactive* (121/27%), *functional* (63/14%), and *immersive experience / multi-sensory spaces* (49/11%).

When asked to choose among a list of possible ways that public art should have an impact in Raleigh (Q5), the most selected answer was *activates public spaces and/or pedestrian areas* (41.4%).

For the question asking, “What types of artwork would you like to see in Raleigh?” (Q9), the top response was artworks that are *interactive and/or playful* (52.9%).

Iconic Artwork

There is also a strong interest among respondents for an artwork that is iconic and/or serves as a landmark.

When asked to select artwork that is “*visually interesting and represent[s] the type of art you think would be successful in Raleigh,*” from a range of options (Q3), Janet Eichelman’s iconic *Her Secret is Patience* was selected most frequently (42.3%).

When asked about a favorite work in Raleigh (Q2), Thomas Sayre’s iconic *Shimmer Wall* (117/31%) was most frequently cited, though the fact that it was also identified in the findings as the most well-known work may have contributed to its ranking.

When asked why these works were favorites, among the top 10 reasons for work in other cities (Q4) were *large-scale* (45/10%) and *bold / vibrant* (45/10%); for works in Raleigh (Q2), the reasons included *iconic / landmark* (29/8%).

When asked to choose among options regarding the impact that public art should have in Raleigh (Q5), the second-highest ranking answer was *creates memorable, highly recognizable landmarks in the most important places in the city* (36.5%). The fourth and fifth were *supports and enhances the distinct identity of Raleigh* (30.8%) and *anchors focal points or community gathering places throughout the community* (30.4%), which sometimes can be an outcome of landmarks or works of art that are iconic.

When asked to choose from a list of types of artwork would you like to see in Raleigh (Q9), the second highest ranked choice was *artworks that are large-scale and iconic* (49.1%).

Community Narratives and Storytelling

There is some interest in the role of public art in telling or revealing community stories and narratives. As mentioned above, one of the top four works from other cities (Q3) was Olalekan Jeyifous’s *Wrought, Knit, Labors, Legacies*, which is a contemporary artwork that frames Alexandria, Virginia’s African American history through the lens of the city’s industrial and merchant history from the 17th to 20th centuries. When respondents were asked why they chose works from other cities, one of the top answers was *relevant to the community/community stories* (44/10%).

The interest in history, storytelling and community narratives also came through in the questions about location. When asked “What areas of Raleigh should be the focus for new public art?” (Q7), *places with historical or cultural significance* ranked second (54.2%). And when asked the open-ended question about one place they would most like to see public art (Q8), *spaces of historical significance* (18/5%) and *telling the story of underrepresented people* (15/4%) were among top responses.

Downtown

Respondents want to see more public art downtown. When asked the open-ended question about “What public spaces in Raleigh are most important?” (Q6), Downtown ranked number second (85/23%). Downtown also ranked first areas that should be the focus for public art (Q7) (62.5%). When asked, “Name one place that you would most like to see public art?” (Q8) the largest number of respondents said Downtown (52/15%).

Parks, Greenways and Open Spaces

Parks, greenways and open spaces are important public spaces and places where respondents would like to see more public art. Dorothea Dix Park, in particular, was called out as a place for art. When asked the open-ended question, “What public spaces in Raleigh are most important?” (Q6), *parks* (117/34%), *Dorothea Dix Park* (77/22%), *greenways / trails* (74/21%) and *open spaces / undeveloped green spaces in the city* (54/16%) were in the top 10 and several other individual parks were listed.

When asked about preferred areas for public art (Q7), parks and greenways also ranked highly, with the third most highly ranked choice being *regional parks that generally serve people from a large area* (50.6%), the fourth being *greenways* (38.4%) and the fifth being *neighborhood parks* (35.9%). In response to the open-ended question about “one area that you would like to see public art,” (Q8) *Dorothea Dix Park* (49/13%) and *greenways* (21/6%) were again in the top ten most frequently mentioned locations.

Places of Historic and Cultural Significance

There is interest in commissioning public art in places of historic and cultural significance, especially in historically disinvested areas. When asked what areas of Raleigh should be the focus for new public art (Q7), *places with historical or cultural significance* (54.2%) was second after downtown. When asked to identify one location where they would like to see public art (Q8), *historically disinvested areas* (29/8%) was the third most frequent answer.

North Carolina Museum of Art (NCMA)

It is worth noting that when asked about favorite works of art in Raleigh (Q2), the third most frequent response was artworks located at the NCMA Museum Park (53/14%), and several other individual works at the Museum Park were also mentioned. It was also frequently listed as one of the most important public spaces in Raleigh. Though a sculpture park differs in many ways to art in other types of public spaces, there may be reasons to look more closely at that collection and why it resonates with so many.

1. Below is a small sampling of permanent and temporary public artwork that is part of the City of Raleigh Public Art Collection. Which examples are you familiar with? Please click on each image you recognize.

Thomas Sayre, "Shimmer Wall"	93.9%
Abbe Godwin, "Dr. Martin Luther King, Jr."	50.3%
Olek, "Nina Simone"	48.3%
David Dahlquist, "Hillsborough Piers"	32.0%
Candy Chang, "Before I Die"	29.7%
Chris Fennell, "Hoops Playing Hoops"	27.5%
David Wilson, "Chavis Reclaimed"	24.5%
Brian Brush, "Sonarc"	22.6%
OMAi, "Saint Agnes Sessions"	22.3%
Andy Dufford, "Equilibrium"	22.1%
Sarahlaine Calva, "Aquatic Journey"	15.5%
Amy Veatch, "Peach Road Mural"	11.3%
Pete Beeman, "Gears"	10.1%
Banded Wilderness, "Boscage"	9.0%
JP Jermaine Powell, "Love"	9.0%

2. Do you have a favorite public artwork anywhere in Raleigh (shown above or another artwork)? Which one? Why?

- “Shimmer Wall” Thomas Sayre (117)
- Murals (91)
- Artworks located at NCMA (53)
- Iconic / Landmark (29)
- Colorful / Bold (24)
- Dynamic / Movement (22)
- Relevant to Raleigh (21)
- “Light+Time Tower” Dale Eldred (20)
- Unexpected / Pleasant surprise (20)
- Artwork that is visually beautiful (20)
- “Color Pop Corner” Lisa Gaither (18)
- “Gyre” Thomas Sayre (NCMA) (16)
- Joyful (16)
- Highly visible (15)
- “The Saint Agnes Sessions” OMAi (14)
- Large scale (14)
- Like them all (14)
- I’m unfamiliar with many of these projects and would like to learn more / Have resources for learning more (14)
- Interactive (14)
- “Here Comes the Sun” Olek (13)
- Street art (12)
- Creative / different / unique (11)
- Message of inclusion / Solidarity (11)
- Sidewalk Art (10)
- “Berkeley the Squirrel” Corey Lancaster (9)
- “Breath of Gods” Thomas Sayre (9)
- Black Lives Matter murals & board-ups (9)
- Engaging / Eye catching / Vibrant (9)
- “All Are Welcome” Luke Buchanan (8)
- “SONARC” Brian Brush (8)
- Well sited (8)
- “LOVERULES” Hank Willis Thomas (7)
- Temporary projects (7)
- Artwork that beautifies (7)
- Inspirational (7)
- Uniquely Raleigh (7)
- “Hoops Playing Hoops” Christopher Fennell (7)
- “No Damsels” Dorian Lynde (7)
- Engages with the community (7)
- “Oberlin Rising” Thomas Sayre (6)
- “John Prine Tribute” Scott Nurkin (6)
- Photo opportunity (6)
- Positive message (6)
- Crosswalks (6)
- Projection projects (6)
- Historical significance (6)
- Child friendly (6)
- Gateway (6)
- Artwork that’s encountered daily (6)
- “Sprinkles’ the bobcat” Lisa Gaither (5)
- “Chavis Reclaimed” David Wilson (5)
- “Redbird” Harry McDaniel (5)
- Support BIPOC artists (5)
- “Morgan Street Jazz Monsters” Kevin Lyons (5)
- Artwork is accessible (5)
- Impactful (5)
- Nature inspired (5)
- Shows Raleigh’s diversity (5)
- Collaborative project (5)
- “Ann and Allen Iverson mural” ESPO (4)
- “Aquatic Journey” Sarahlaine Calva (4)
- “Carolina Hurricanes mural” Sean Kernick (4)
- “Wind Machine” Vollis Simpson (4)
- “Welcome to Raleigh, Y’all” Come Out & Show Them (4)
- “Summer’s Where You’ll Find Me” Ouizi (4)
- “Before I Die” Candy Chang (4)
- Bright artwork (4)
- Art at bus shelters (4)
- Creates a destination (4)
- Events / Festivals (4)
- Art Walk (4)
- Local artists (4)
- “Acorn” David Benson (3)
- “Honest Abe mural” Clark Hipolito (3)
- Encourage physical activity (3)
- “Abstracted Motion” Taylor White (3)
- “Boscage” Peter B. Kay (3)
- Personal connections (3)
- Art in the Warehouse District (3)
- Artspllosure (3)
- Neon Art (3)
- Dr. Martin Luther King Memorial Gardens (3)
- Immersive (3)
- Encourages exploration (3)
- Fun (3)
- Functional (3)
- Create gathering places (3)
- “Memorial Arch” at Oberlin Village (2)
- “Communicating Vessels” Ilan Averbuch (2)
- “Askew” Roxy Paine (NCMA) (2)
- “Sir Walter Raleigh” Bruno Lucchesi (2)

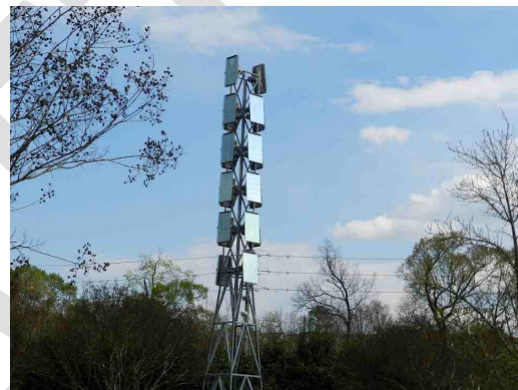
"Shaw University Mural" Scott Nurkin (2)
 "Pure Love" JP Jermaine Powell (2)
 "John Lewis" Jalel Ronin (2)
 Rodin Garden at NCMA (2)
 Temporary projects that change (2)
 Projects on Greenways (2)
 Halifax Mall (2)
 Contemporary (2)
 Nighttime projects (2)
 Educational / Science (2)
 SEEK Festival (2)
 Repurposed materials (2)

Good texture (2)
 "Knife Edge" Henry Moore (NCMA) (1)
 "Oaks and Spokes Mural" (1)
 "Little Critters" Leah Preiss (1)
 "The Good of the Hive" Matthew Willey (1)
 "Cloud Chamber for the Trees and Sky" Chris Drury (1)
 Architectural (1)
 BEST mural (1)
 Electrical boxes (1)
 Bronze sculptures (1)

Top Four



1 – Thomas Sayre, "Shimmer Wall"



2 – Dale Eldred, "Light + Time Tower"



3 – Lisa Gaither, "Color Pop Corner"



4 – Thomas Sayre, "Gyre"

3. Of these projects, pick up to five that you think are visually interesting and represent the type of art you think would be successful in Raleigh.

Janet Echelman, "Her Secret is Patience," Phoenix, AZ	42.3%
Northern Spark Festival, Minneapolis, MN	41.5%
Patrick Dougherty, "Muskrat Ramble," Olympia, WA	40.0%
Olalekan Jeyifous, "Wrought, Knit, Labors, Legacies," Alexandria, VA	35.6%
TheVeryMany, "Chrysalis Amphitheater," Columbia, MD	30.1%
Amanda Browder, "Spectral Locus," Ann Arbor, MI	29.5%
Walter Hood, "Witness Walls," Nashville, TN	29.0%
Jim Campbell, "Swirl," Des Moines, IA	25.3%
Erwin Redl, "Mobile Suspension," Spartanburg, SC	23.7%
Scott Eunson & Marianne Lovink, "BLDG Bike Stands," Toronto, ON	22.4%
Matthew Mazzotta, "Cloud House, Springfield, MO	22.4%
William LaChance, "Kinloch Courts," Kinloch, MO	22.2%
Erik Burke, "Kramer's House," Reno, NV	21.0%
Vivian Beer, "Dressed Up and Pinned," Arlington, VA	20.6%
Tiffany Carbonneau, "Inside and Outside," Louisville, KY	20.6%
Norf Art Collective, "Untitled," Nashville, TN	18.1%
Nicholas Sassoon, "Treehouses," Vancouver, BC	17.6%
Mary Beth Meehan, "Seeing Newnan," Newnan, GA	6.6%

Top Four



1 -- Janet Echelman, "Her Secret is Patience,"
Phoenix, AZ



2 -- Northern Spark Festival, Minneapolis, MN



3 -- Patrick Dougherty, "Muskrat Ramble,"
Olympia, WA



4 -- Olalekan Jeyifous, "Wrought, Knit, Labors,
Legacies," Alexandria, VA

4. Of the projects you chose, what do you like about them?

Colorful (157)
Interactive (121)
Functional (63)
Immersive experience / Multi-sensory spaces (49)
Large scale (45)
Bold / Vibrant (45)
Relevant to the community / Community stories (44)
Visually interesting (43)
Inspiring / Creative / Thought-provoking (42)
Light-based artwork (42)
Accessible / Inclusive / Welcoming (37)
Improving existing structures / Functional spaces (38)
Engaging / Eye catching (34)
Unique / Different (34)
Playful / Fun / Joyful (34)
Murals (33)
Natural / Environmentally friendly (29)
Spaces for kids / Families (27)
Celebrates history (25)
Creates gathering space (23)
Impactful / Ambitious (22)
Unexpected / Encourage exploration (21)
Create destination / Landmarks (20)
Festival / Events (Projections) (19)
Photo Opportunities / Social media (17)
Well sited (16)
Highlight cultural diversity / BIPOC artists (15)
Temporary / Changing (15)
Artwork with movement (13)
Artwork with night interest (10)
Promote conversation (10)
Sculptural / 3-Dimensional (10)
Encourages activity (8)
Educational (7)
Technology artwork (7)
Open interpretation / Abstract (6)
Appealing to all ages (6)
Modern / Forward-thinking (6)
Long lasting / permanent (5)
Simple (4)
Sophisticated (2)

5. What is the IMPACT that public art should have in Raleigh? (pick your top four) I would like to see public art in Raleigh that ...

Activates public spaces and/or pedestrian areas.	41.4%
Creates memorable, highly recognizable landmarks in the most important places in the city.	36.5%
Enhances the visual appearance of streets and beautifies public infrastructure.	33.8%
Supports and enhances the distinct identity of Raleigh.	30.8%
Anchors focal points or community gathering places throughout the community.	30.4%
Supports the ability of local artists to develop a public art practice.	29.8%
Reveals Raleigh's histories, particularly those that have been overlooked.	26.6%
Supports Raleigh's growth as a cultural destination.	26.6%
Supports and generates social interaction throughout the community.	26.0%
Brings a wider variety of Raleigh's creative voices and practices into public space and public view.	26.0%
Raises awareness and sparks dialogue about important issues impacting the community.	18.3%
Supports and generates social interaction throughout the city.	17.7%
Raises awareness of and engagement with Raleigh's natural environment and sustainability issues.	15.0%
Enhances the identity of Raleigh's neighborhoods and business districts.	15.0%
Creates an outlet for community creativity and expression through hands on involvement.	13.5%
Other - Write In	2.7%

Other - Write In

- All public art should inspire awe and gratitude for having see it.
- Art should inspire by its sheer brilliance and genius.
- Celebrates Raleigh's unique history without resorting to Victimization Porn.
- Encourages exploration of the city
- Form and Function Combined--why does art just have to be "seen," can't it be part of the everyday things we do and interact with? Just because it's a parking meter, doesn't mean it can't be art. Just because it's seating area, doesn't mean it can't be art. Stop thinking so one-dimensionally about art. Art shouldn't be pigeon-holed into an archaic viewpoint. I believe art, to really express an idea, must be tangible and attracting to all of our senses, not just our eyes.
- Gives artists new opportunities

- Is not done because government is a terrible judge of artistic merit
- Public art should landmark areas of the city outside 440, too.
- Reimagines utilitarian objects in creative ways: the lighting installation by Matt McConnell coming soon to Glenwood Ave and Women's Club Drive.
- Serves a practical use
- Shares the history of Raleigh that will soon be forgotten
- reflects backyard wildlife and birds
- serves as a single landmark or monument for the city
- All this public art looks like crap. Stop junking up the city.

DRAFT

6. What public spaces in Raleigh are most important to you? Why?

Parks (117)
Downtown (85)
Dorothea Dix Park (77)
Create gathering places / Connect people /
Create community (77)
Greenways / Trails (74)
Moore Square / City Market (65)
Open spaces / Undeveloped green spaces in
the city (54)
Neighborhoods (57)
North Carolina Museum of Art / Museum Park
(50)
Walkable or bikeable spaces (45)
Spaces to enjoy nature / Be outdoors (45)
Be a voice for Raleigh residents / Shine light
on untold stories & underrepresented
communities (38)
Accessible / Culturally diverse spaces (37)
City Squares / Plazas (26)
Well trafficked / Convenient spaces (26)
Fayetteville Street (24)
Sites of historical importance / Historic
Event areas / Popular destinations (23)
Streets / Major roads (22)
Nash Square (21)
State Capitol grounds (21)
Community Centers / Libraries / Schools /
Churches (16)
Create a destination through art (16)
Pullen Park (15)
Spaces for kids / families (15)
Chavis Park (13)
Encourage creative expression / Creative
experiences (13)
Part of daily life / Art as a surprise within daily
life (13)
Iconic / Shows the heart of Raleigh (12)
Memorial Auditorium / Performing Arts
Center (11)
Umstead Park (11)
Public transportation / Train stations / Union
Station (11)
University campuses (10)
Warehouse District (9)
Area lakes (9)
Space has untapped potential (9)
Hillsborough Street (8)
Outside the Beltline / Not downtown (8)
Fred Fletcher Park (7)
Glenwood South (7)
North Hills Shopping Center (7)
Local shops and restaurants (7)
Red Hat Amphitheater (6)
Raleigh Rose Garden (6)
South Raleigh (6)
Gateways (6)
Visually interesting site (6)
Village District (5)
NC State fairgrounds (5)
NC Museum of History (5)
Carter-Finley Stadium / PNC Arena (5)
Overpasses / Railroad trestles (5)
Farmers Market (5)
Boylan Bridge (4)
Convention Center (4)
Oberlin Village (3)
Peace Street (3)
Mordecai mansion and grounds (3)
Oakwood / Five points (3)
North Raleigh (2)
Create safer spaces (4)
Cemeteries (2)
Projects for nighttime (2)
East Raleigh (1)
Caraleigh (1)
Devereux Meadows (1)

7. What AREAS of Raleigh should be the focus for new public art opportunities?
Check the top four areas.

Downtown.	62.5%
Places with historical or cultural significance.	54.2%
Regional parks that generally serve people from a large area.	50.6%
Greenways.	38.4%
Neighborhood parks.	35.9%
Neighborhoods and business districts.	33.5%
Redesigned streetscapes.	28.9%
Newly-developing mixed-use centers.	17.7%
Bus rapid transit corridors.	17.1%
City buildings.	16.5%
Recreation centers.	9.9%
Stormwater systems.	6.7%
Public safety facilities (fire and police stations).	2.7%
Other - Write In	5%

Other - Write In

- Any wall a mural can go on
- Bridges
- Business districts but not necessarily neighborhoods specifically
- Dix park
- Dumps and recycling centers.
- East Raleigh needs public art badly
- Gateways to downtown
- Greenways entry points- where it intersects with roads
- hospitals, courts, places where people need support
- Infrastructure such as electric boxes, overpasses, sidewalks
- Nature preserves
- None
- Overlooked communities
- Parks in areas of the city where those who traditionally sponsor art do not live. Create more incentive for people to get to know other parts of Raleigh.
- Places the are safe and accessible for people that can't walk. Drive by opportunities with the walking issue and the pandemic.
- Playgrounds in parks
- Public middle and high schools

- Railroad Overpasses!!!
- Schools
- schools and libraries
- Sidewalks
- The answer to this question depends on how beautiful and if the art is high quality. If it's what was presented earlier, I'd prefer to not have to look at it everyday.
- Transportation and walkability can be uninviting at time in and I feel that public art would connect the dots in these areas without having to redo the entire street or area. But I wanted to emphasize this for BRT, the greenway system and streetscape. There are a lot of gaps and this could be the opportunity to fill in the gaps and make transportation without a car more welcoming.
- Unsightly Mechanical or Electrical boxes such as traffic control boxes.

DRAFT

8. What is the one location where you would most like to see a public art project in Raleigh? Why?

- Downtown (52)
- Dorothea Dix Park (49)
- Historically disinvested areas / Marginalized areas (29)
- Create identity (22)
- Anywhere / Everywhere (21)
- Create gateways (21)
- Greenways (21)
- Beautify (19)
- Spaces for murals (19)
- High trafficked / Popular destinations (19)
- Parks / Neighborhood parks (18)
- Spaces of historical significance (18)
- Create destinations (17)
- Tell the story of underrepresented people (15)
- Economic driver / Support small businesses (15)
- Improve / create gathering places (15)
- Streets / Intersections / Highways (15)
- Centrally located / Convenient (14)
- Space is open / Large (13)
- To impact / Inspire (13)
- Rapidly changing / Developing areas (12)
- Iconic / Landmark artwork (12)
- Spaces without public art (11)
- To connect with nature (10)
- Accessible space (10)
- To engage / Welcome (10)
- The space has potential (10)
- Lakes (10)
- Technology Projects / Light-based projects (10)
- Public transportation / Train stations / Bus Rapid Transit Corridors / Bus stops (9)
- Artwork that would be uniquely Raleigh (9)
- Meet people where they are (9)
- Create energy / Vibrancy (8)
- Parking lots (8)
- Create stronger community (9)
- Unexpected locations / Encourage exploration (8)
- Spaces for tourists (8)
- Encourage physical activity / Walking (7)
- Neighborhoods (6)
- Schools / Libraries (6)
- Support local artists (6)
- Create a sense of safety (6)
- Connect disparate areas (5)
- Temporary projects / Often changing (5)
- Not downtown (5)
- University campuses (5)
- Artwork for kids / Families (4)
- Bridges / Overpasses (4)
- Highly visible location (4)
- Community Centers (4)
- Food hubs / Farmers market (3)
- Create photo ops (2)

9. What TYPES of artwork would you like to see in Raleigh? (pick your top 4)
I would like to see more...

Artworks that are interactive and/or playful.	52.9%
Artworks that are large-scale and iconic.	49.1%
Artist-designed functional elements in the streetscape (benches, bike racks, crosswalks, manhole covers).	42.9%
Murals.	40.8%
Artworks that create visual surprises for pedestrians.	39.8%
Illuminated/Light-based projects.	38.0%
Artworks that create a sense of peacefulness, reflection, and contemplation.	24.7%
Street art (independent, sometimes unsanctioned, art in public spaces).	24.1%
Public art festivals.	22.0%
Land forms, earth art or art made from natural materials.	21.6%
Temporary installations that come and go.	16.7%
Video projection and media-based artworks.	8.2%
Other - Write In	5.5%

Other - Write In

- 3-dimensional, sculptural, durable, multicultural
- accessible to all people
- Anything that can be touched and experienced by people who are blind and use wheelchairs.
- art installations that are accessible to all citizens - blind, deaf, rolling people
- artwork created in collaboration with community
- Artworks that also serve as a shelter or physical structure
- Artworks that establish a sense of place.
- artworks that tell stories about place/nontraditional monuments
- Community involved art that is led by a local artist(color by numbers, for example)
- dear god no more murals
- Fountains
- Fully realized architectural follies that comment on Raleigh's lack of character in the built environment
- Interactive sculpture
- involving physical activity & single-use materials
- large scale pieces that do not necessarily have to be iconic
- Like Thomas Sayre's earth art, but not earth art just because that's what it is.
- Love to see art "suspended" in air. High above!
- memorable
- monuments

- my geo-spatial migratory machine learning swarm of artificial life i just came up with (werkplace)
- None (2)
- opportunities for artists small scale shows
- Performance
- permanent
- Revolve around social issues
- safe in using space
- Variety of styles in variety of places.
- walking tours (audio)

DRAFT

10. What is your zip code?

Count	Response
55	27603
41	27601
4	27502
4	27529
4	27545
3	27513
3	27587
2	27519
2	27527
2	27539
2	27540
2	27591
1	20009
1	27061
1	27401
1	27501
1	27510
1	27514
1	27516
1	27523
1	27549
1	27560
1	27572
1	27602

11. Do you live in Raleigh? If so, how long have you lived here?

Less than 1 year	3.5%
1 to 3 years	8.5%
4 to 6 years	10.5%
7 to 9 years	8.2%
10 to 20 years	23.5%
More than 20 years	38.3%
I do not live in Raleigh	7.6%

12. Do you work in Raleigh? If so, how long have you worked here?

Less than 1 year	3.3%
1 to 3 years	12.4%
4 to 6 years	11.6%
7 to 9 years	9.6%
10 to 20 years	25.4%
More than 20 years	23.2%
I do not work in Raleigh	14.4%

13. What is your age range?

Younger than 18.	0.4%
18-25	5.0%
26-34	26.0%
35-54	44.2%
55-64	13.8%
65 or older	9.7%
Prefer not to answer	1.0%

14. Please tell us your gender identity.

Female	68.6%
Male	25.0%
Prefer not to answer	5.5%
Non conforming	1.0%

15. Are you of Hispanic, Latino, or of Spanish origin?

Yes	3.3%
No	89.6%
Prefer not to answer	7.1%

16. How would you describe yourself?

American Indian or Alaska Native	0.2%
Asian	1.4%
Black or African American	6.2%
White	85.1%
Two or More Races	7.1%