
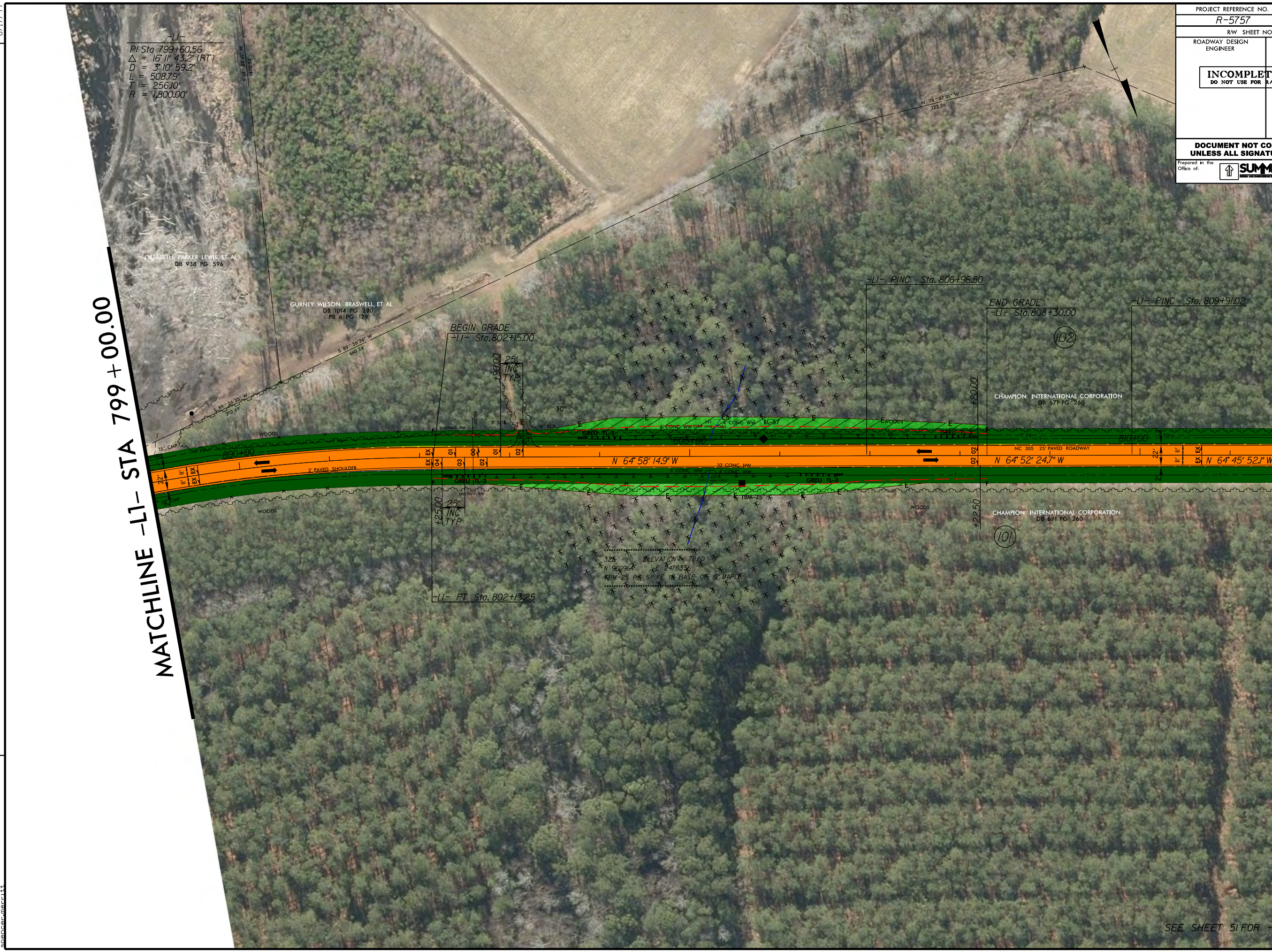


PROJECT REFERENCE NO.	SHEET NO.
R-5757	24
RW SHEET NO.	
ROADWAY DESIGN ENGINEER	HYDRAULICS ENGINEER
<b>INCOMPLETE PLANS</b> DO NOT USE FOR A/W ACQUISITION	
<b>DOCUMENT NOT CONSIDERED FINAL</b> UNLESS ALL SIGNATURES COMPLETED	
Prepared in the Office of:	 <small>NC FIRM LICENSE No. P-0339          304 Meadows Drive          Hillsborough, NC 27278          (919) 732-3883          (919) 732-6676 (FAX)</small>

-LI-  
 PI Sta 799+60.56  
 $\Delta = 16' 11" 43.2" (RT)$   
 $D = 3' 10" 59.2"$   
 $L = 508.79'$   
 $T = 256.10'$   
 $R = 1,800.00'$

MATCHLINE -LI- STA 799 + 00.00

MATCHLINE -LI- STA 811 + 50.00



REVISIONS

R-5757-24-PLM.dgn  
 08/24/2011 10:00 AM  
 08/24/2011 10:00 AM

SEE SHEET 51 FOR -LI-9A- PROFILE