



Reedy Creek Greenway

Rocky River Road to Plaza Road Extension

Public Information Session: December 9, 2021



**Mecklenburg County
Park and Recreation**

Getting to know Zoom



Mecklenburg County
Park and Recreation



The screenshot shows a Zoom meeting window. At the top, a green banner reads "You are viewing Park & Rec's screen". Below this is a header bar with participant names: "You", "Park & Rec", "Your Neighbor", "The Consultant", "Elected Official", and "Another Neighbor". The main area is a dark blue screen with a red line through the microphone icon and a red line through the video icon. A pink box highlights the "Unmute" and "Start Video" buttons. A yellow arrow points from the text "Ask questions and add comments to the chat throughout the meeting!" to the chat window on the right. The chat window shows a list of participants and a "Type message here..." input field.

Zoom Meeting You are viewing Park & Rec's screen View Options

You Park & Rec Your Neighbor The Consultant Elected Official Another Neighbor

Stay muted!
Red line through microphone = muted

Video optional.
Red line through video = off

Unmute Start Video

Ask questions and add comments to the chat throughout the meeting!

Participants (8)
Find a participant

- You
- Park & Rec
- Your Neighbor
- The Consultant
- Elected Official
- Another Neighbor

Invite Unmute Me ...

Chat

To: Everyone

Type message here...

Unmute Start Video Participants (8) Chat Share Screen Record Reactions Leave

Project Team



Mecklenburg County
Park and Recreation



Civil Engineering , Landscape
Architecture & Structural
Engineering



FROEHLING & ROBERTSON

Engineering Stability Since 1881

Geotechnical
Engineering



Environmental



Surveying

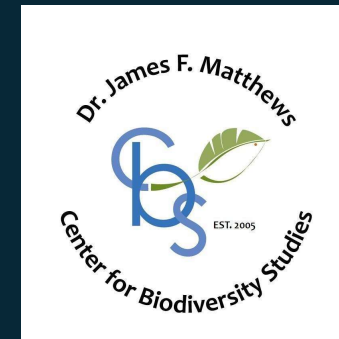
Reedy Creek Fun Facts



Mecklenburg County
Park and Recreation



- Reedy Creek Park & Nature Preserve
 - 700 Acres originally purchased in 1981
 - Park built in 1983/Nature Center built in 1992
 - 1,100 Acres today!
- James F. Matthews Center for Biodiversity Studies
- From Native Americans to King George to John Selwyn
- Historic Robinson Rockhouse



Greenways Overview



Mecklenburg County
Park and Recreation



Little Sugar Creek Greenway

- Vegetated natural buffers that help protect water quality, reduce the impacts of flooding and provide wildlife habitat.
- Linear parks that connect people and places
- Trails that provide recreation, transportation, fitness and economic benefits for all to enjoy.
- Promote diversity, health, quality of life, good business and stretch our tax dollars.

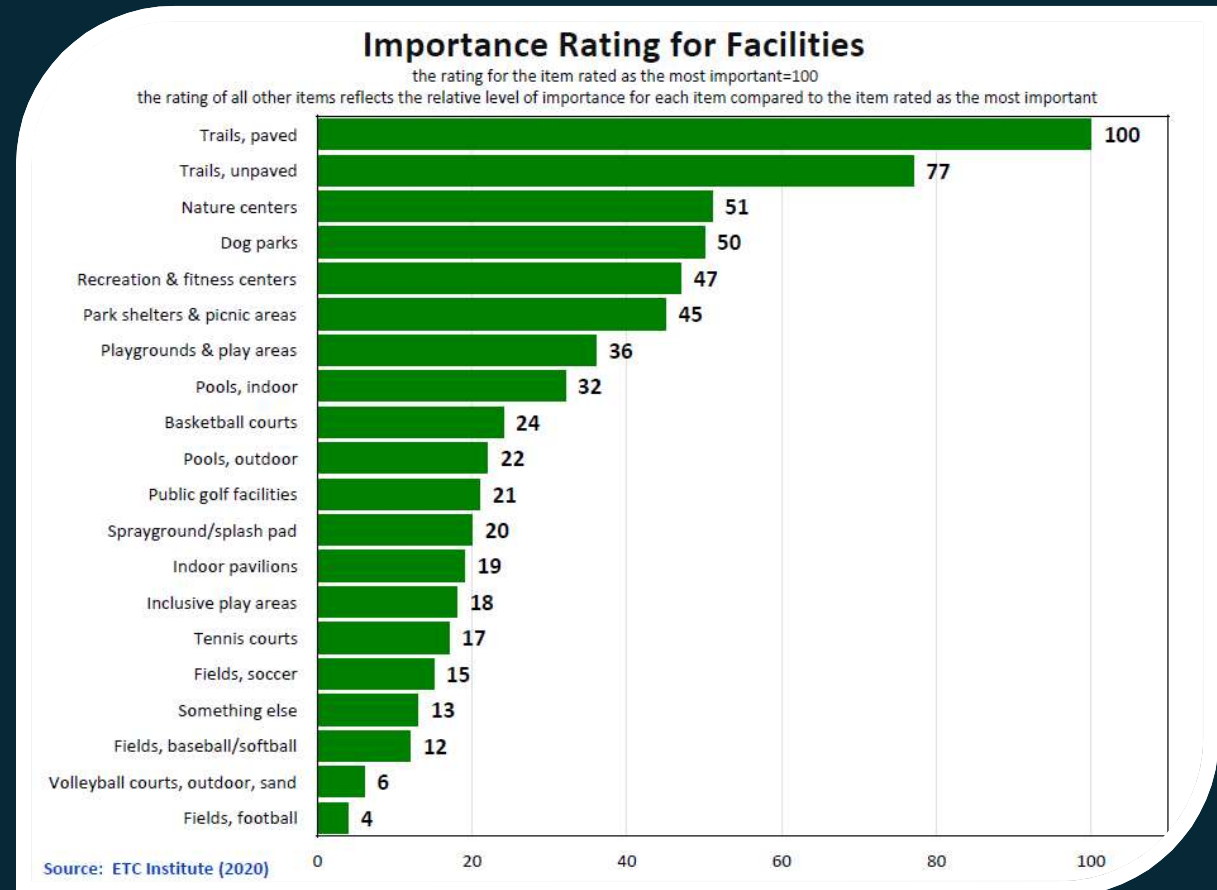
Greenways Overview



Mecklenburg County
Park and Recreation



- In 1966, the Charlotte-Mecklenburg Master Plan for recreation recommended greenways “as logical natural elements useful in creating a sense of physical form and order within the city.”
- **#1 Amenity requested by the residents today**
- Greenway Master Plan includes 308 miles of greenway trails and 200+ miles of urban trails



Accelerated Greenway Plan



Mecklenburg County
Park and Recreation

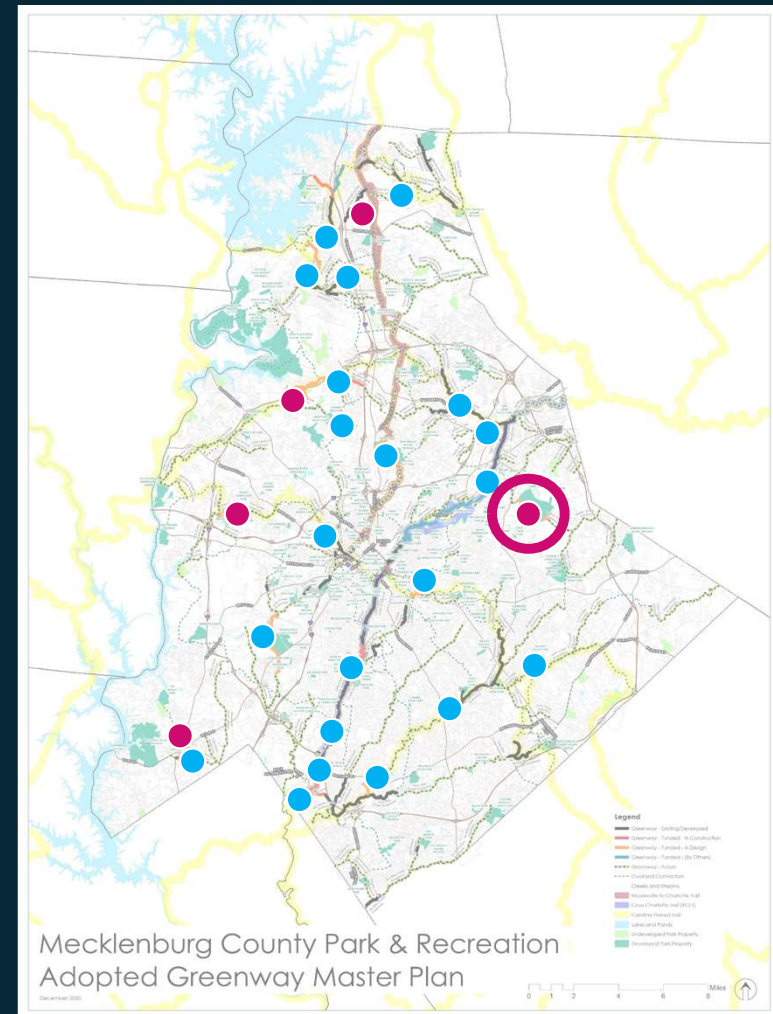


- Complete **30 miles** of greenway by **2023!**

Miles	Greenway Development Status
59	Existing/Developed
8	Funded – In Construction (Includes City + Town projects)
28	Funded – In Design
3	Funded – By Others
~98	Total Greenway Miles funded through FY2023

● CIP Funded Projects

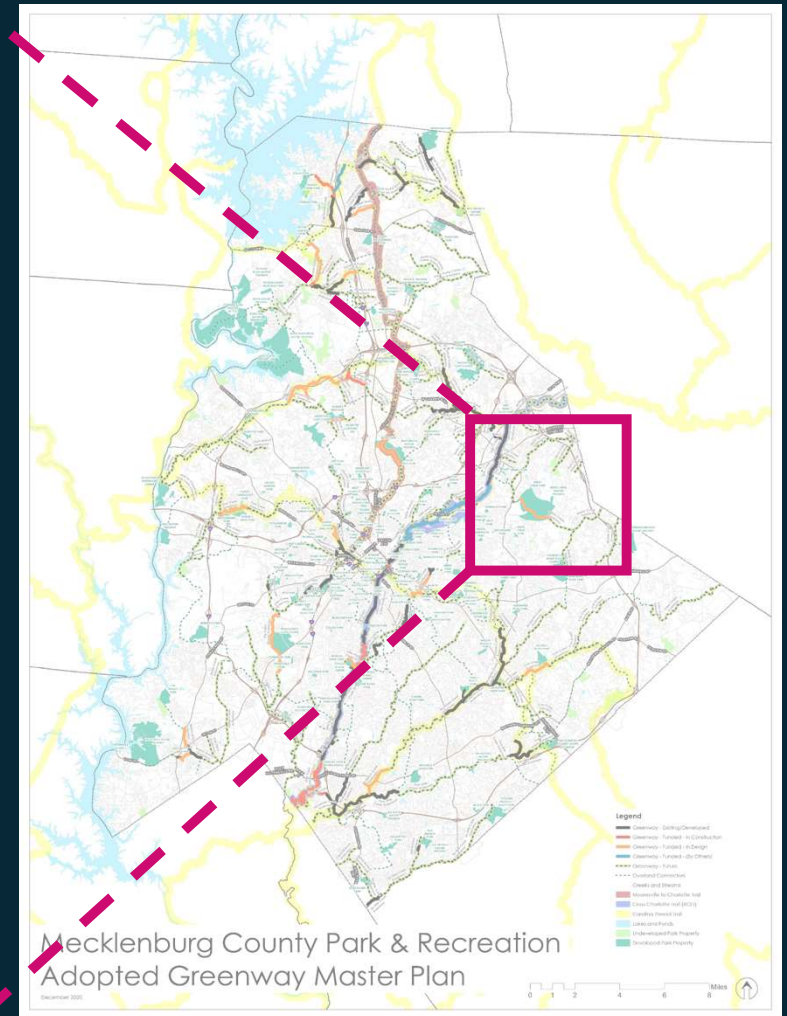
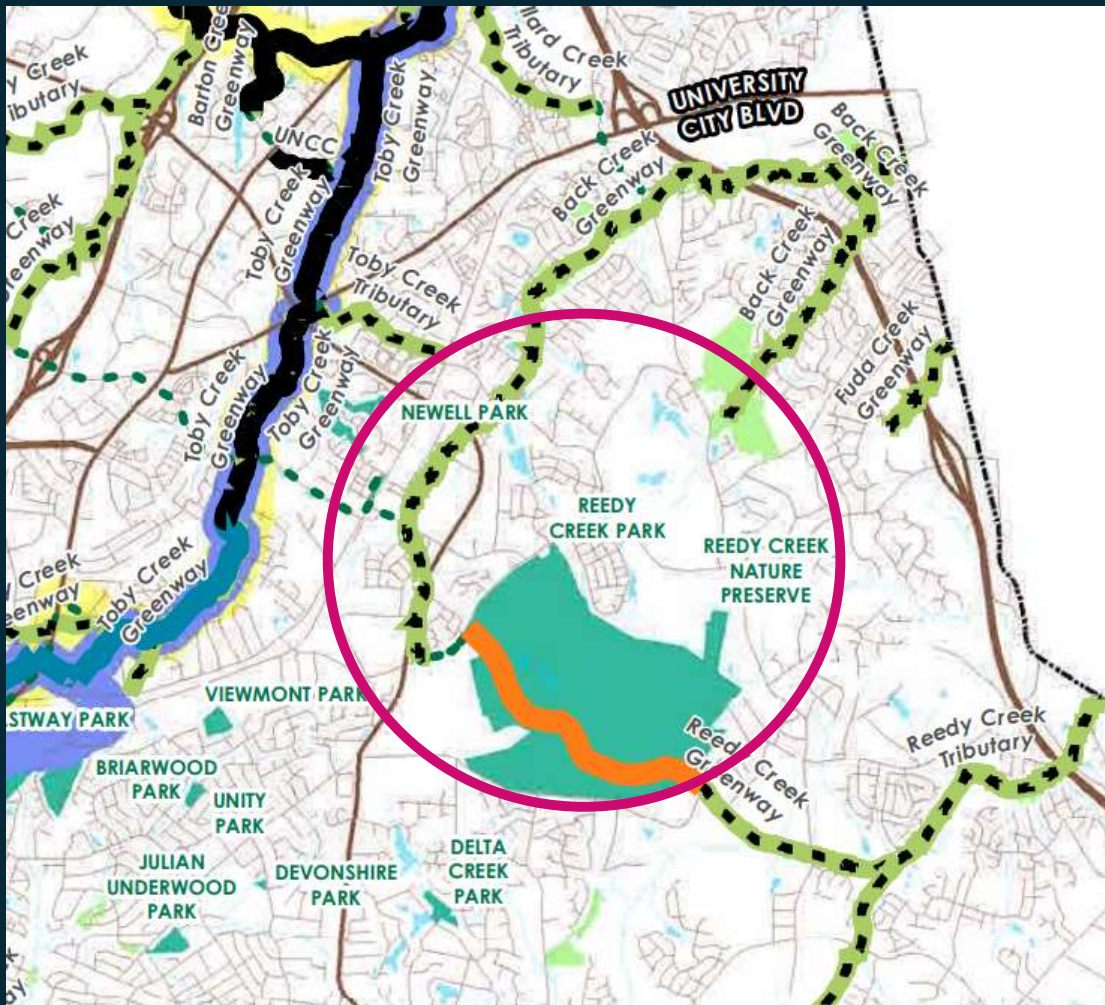
● Accelerated Greenway Projects



Reedy Creek Greenway



Mecklenburg County
Park and Recreation



Mecklenburg County Park & Recreation
Adopted Greenway Master Plan

Project Schedule



Mecklenburg County
Park and Recreation



- Master Plan Alignment: 2008
- Stream Restoration: 2014
- Greenway Planning: 2020 - 2021
- Design: Fall 2021 – 2022
- Bidding: Late 2022
- Construction: 2023



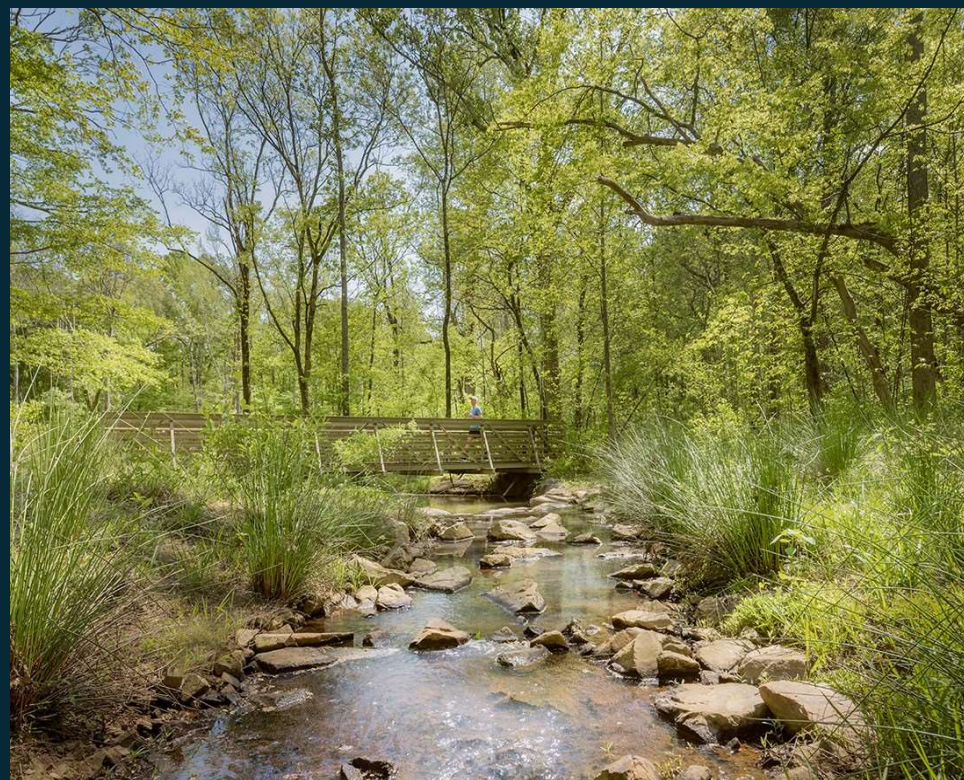
Stream Restoration



Mecklenburg County
Park and Recreation



Before

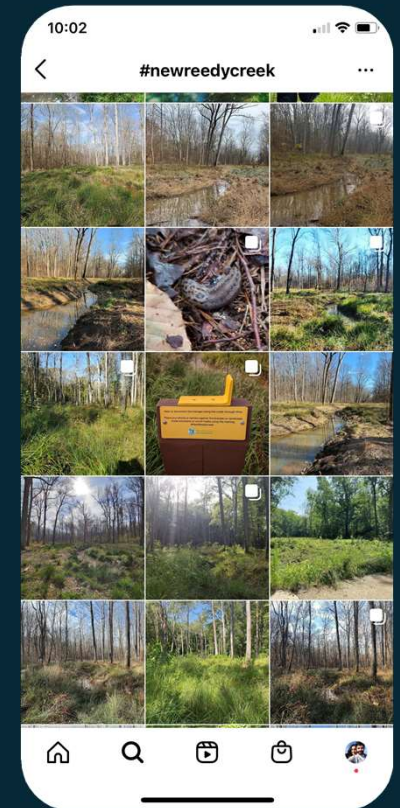


After

Stream Restoration



Mecklenburg County
Park and Recreation

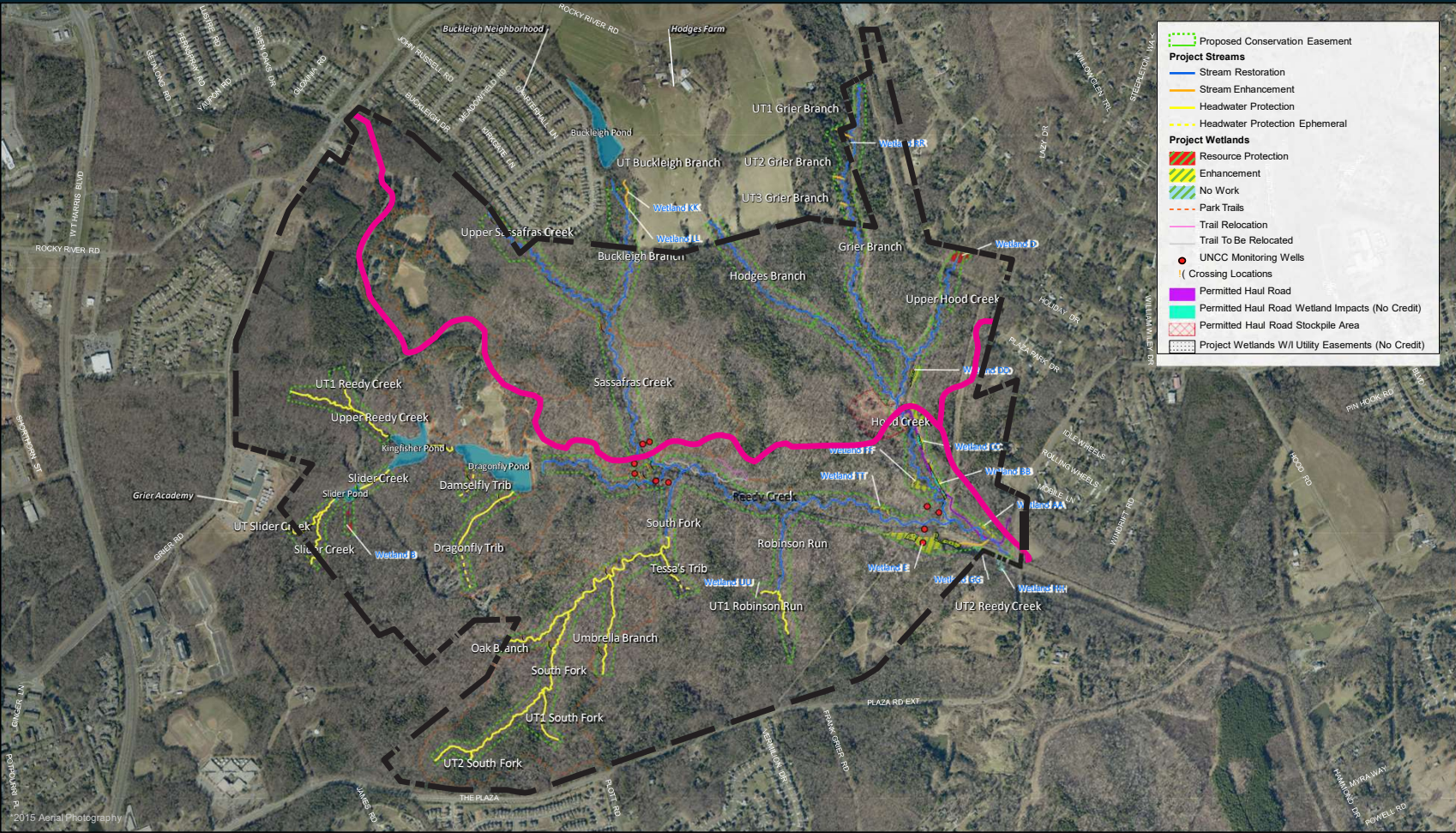


#New Reedy Creek

CIP Greenway Alignment



Mecklenburg County
Park and Recreation



Greenway Alignment Field Walks



Mecklenburg County
Park and Recreation



Greenway Alignments Study



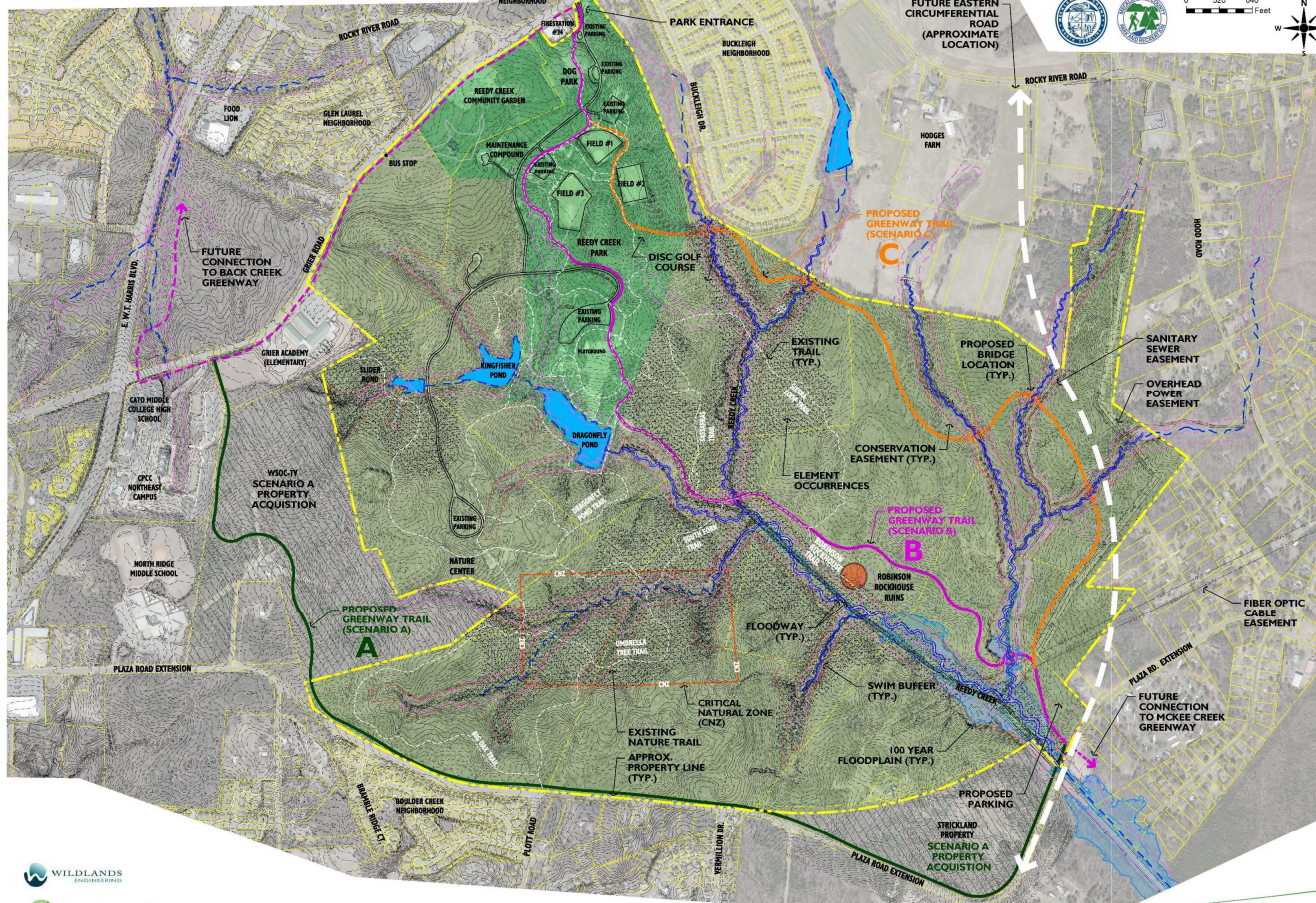
Mecklenburg County
Park and Recreation



Reedy Creek Greenway | Greenway Alignment Scenarios

Charlotte, North Carolina

Mecklenburg County Park and Recreation Dept. | 03.10.2020

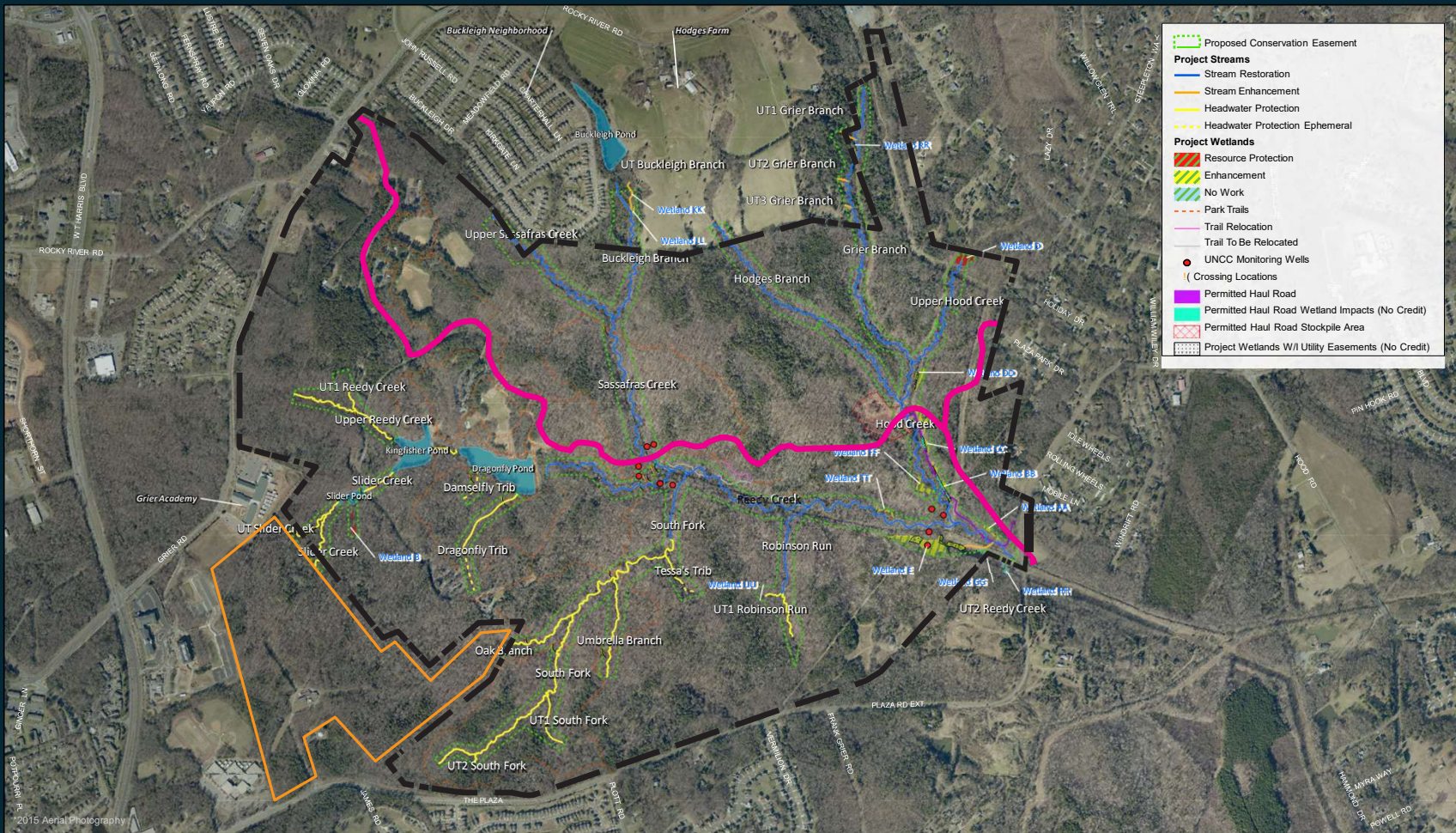


Alfred Benesch & Company | 2359 Perimeter Pointe Parkway, Suite 350 | Charlotte, NC 28208
www.benesch.com | 704.521.9880

Adjacent Land For Sale!



Mecklenburg County
Park and Recreation



Enlargement A



Mecklenburg County
Park and Recreation



Existing dog park

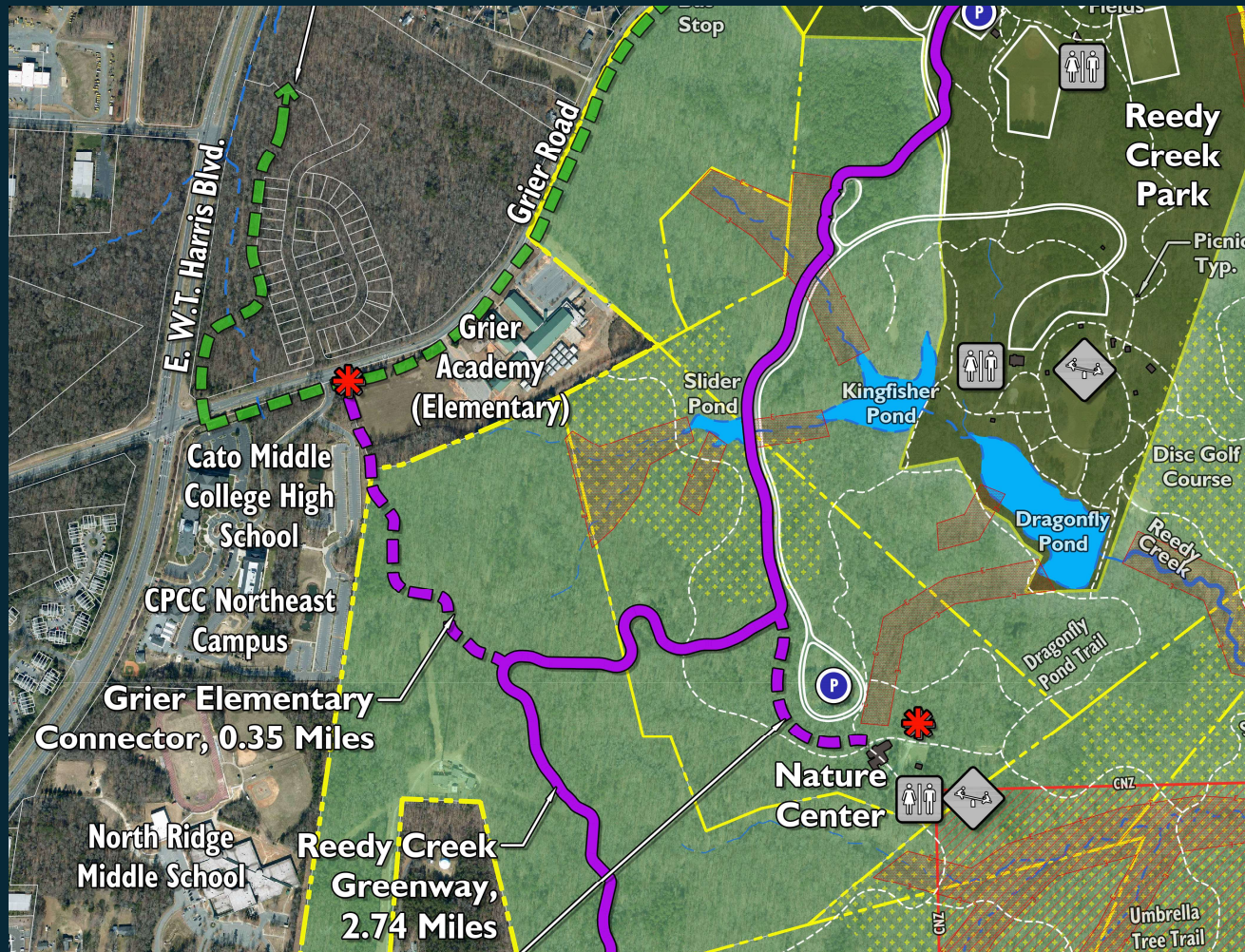


Existing gravel trails to be improved.

Enlargement B



Mecklenburg County
Park and Recreation



Enlargement B



Mecklenburg County
Park and Recreation



Existing Slider Pond



Reedy Creek Nature Center

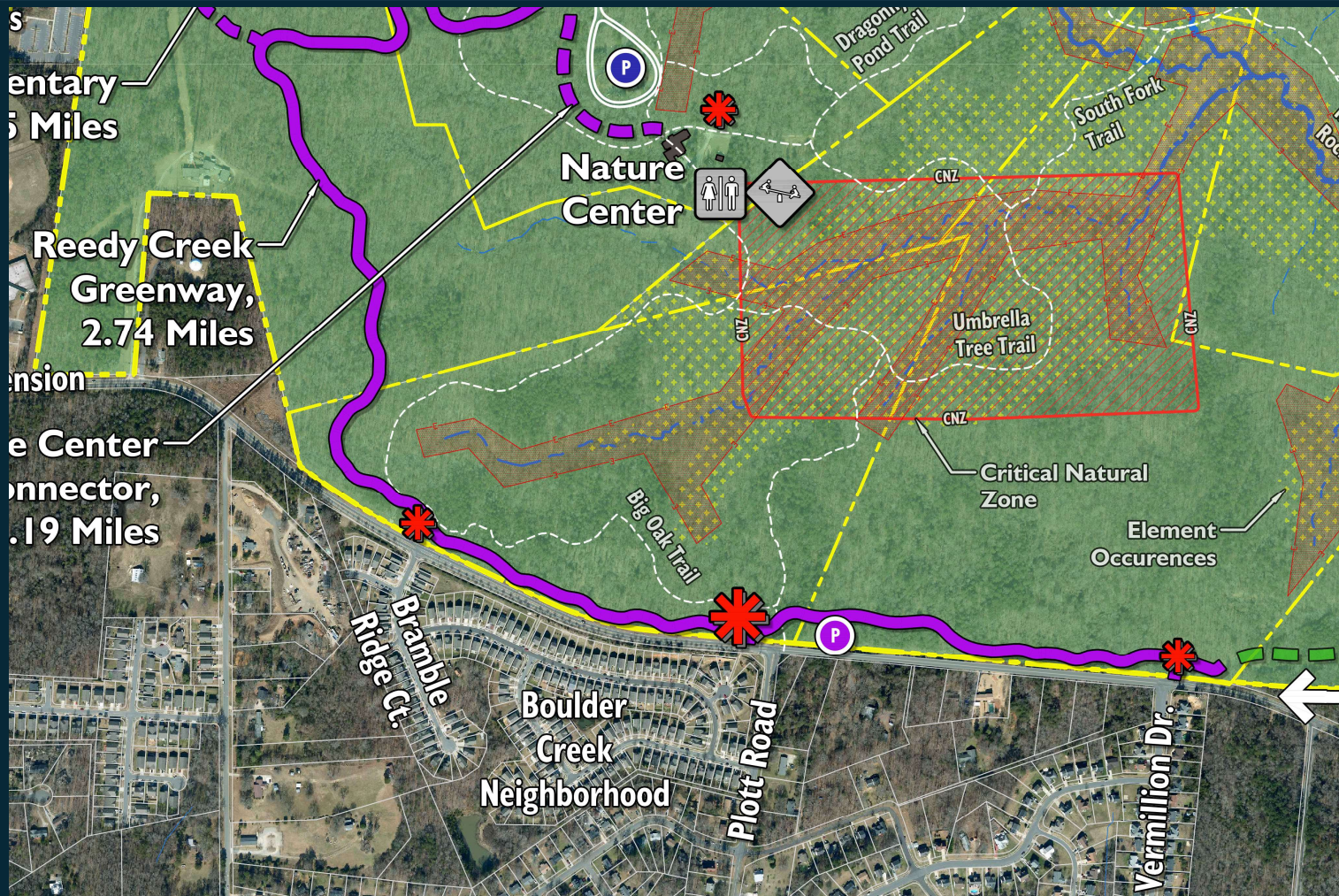


Potential Spur Trail Access Point
at Grier Road

Enlargement C



Mecklenburg County
Park and Recreation



Enlargement C



Mecklenburg County
Park and Recreation



Mill stone adjacent to proposed trail



Nature Trails



Existing Rock Outcrop

Example Trailhead Parking Lot



Mecklenburg County
Park and Recreation



Little Sugar Creek Greenway

(Tyvola Road to Huntingtowne Farms Park)



McDowell Creek Greenway

(Torrence Greenway to Lee Dukes)

Example Boardwalk



Mecklenburg County
Park and Recreation



Photo from
Toby Creek
Greenway



Questions?

PublicInput.com/ReedyCreekGreenway

Contact:

Joyce Figueroa

Greenway Trail Planner

704-962-2348

joyce.figueroa@mecklenburgcountync.gov

Jennifer Brooks, PLA, ASLA

Project Manager

980-445-8724

jennifer.brooks@mecklenburgcountync.gov