



# PLAN BASICS & PROCESS

## PLAN PURPOSE

**WHERE DO PEOPLE WANT TO GO BY FOOT?**

Identify key locations that people in Jackson County want to walk to.

**HOW DO WE CONNECT THOSE PLACES?**

Identify the facilities and standards to connect key locations.

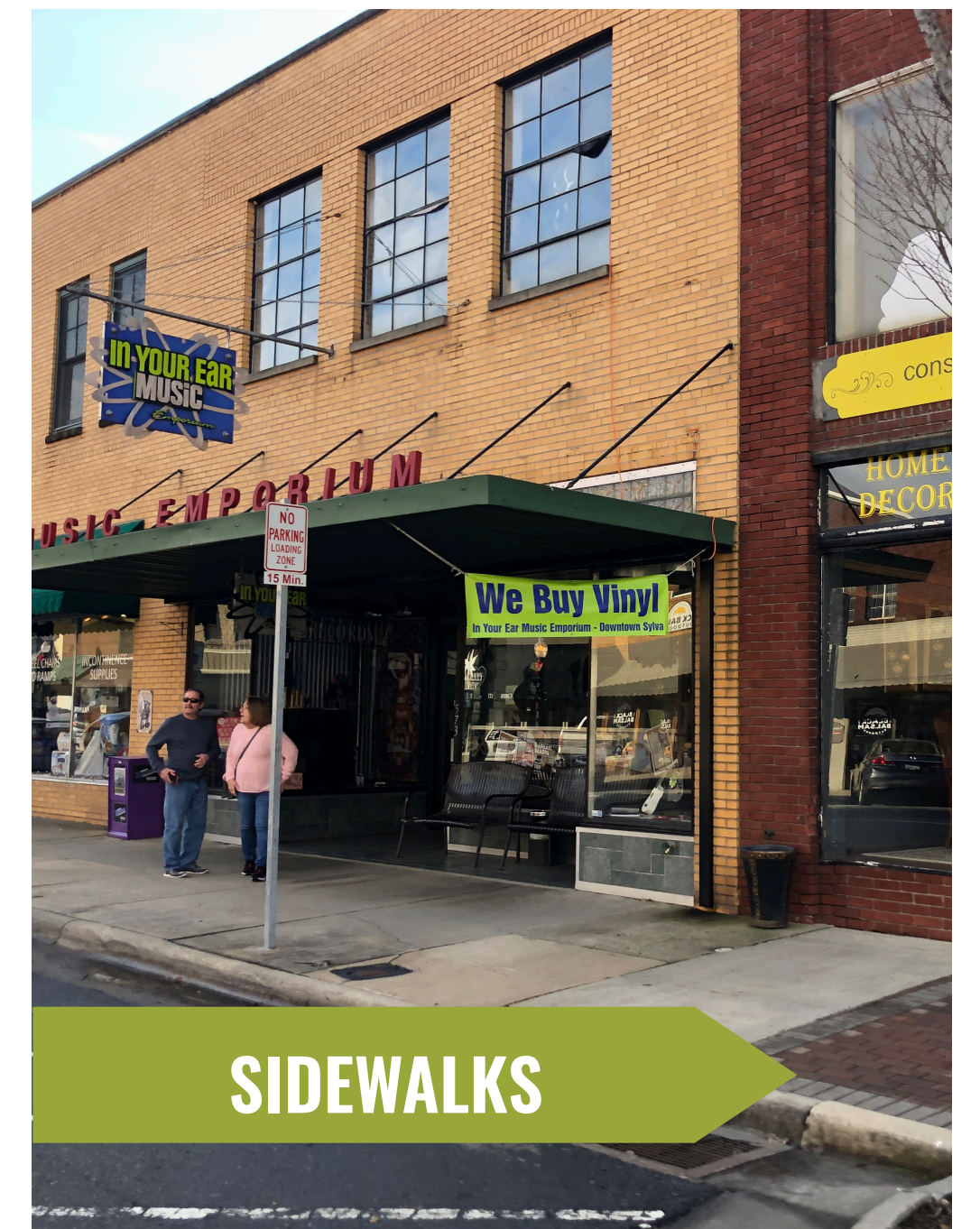
**HOW DO WE BUILD THE NETWORK?**

Identify priority projects, costs and funding opportunities.

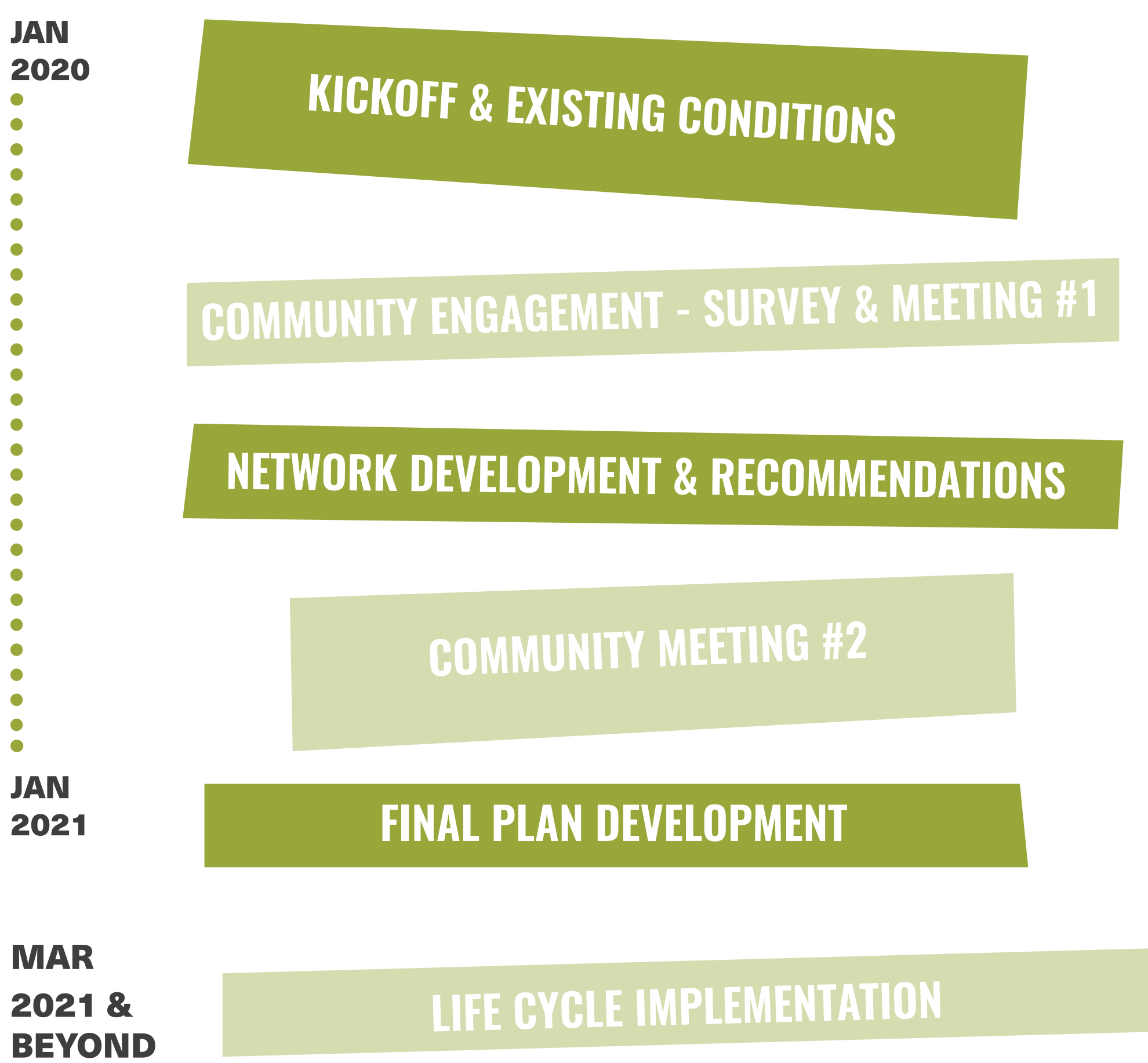
**HOW DO WE BUILD A BICYCLE & PEDESTRIAN FRIENDLY JACKSON COUNTY?**

Identify programs and policies to promote walking.

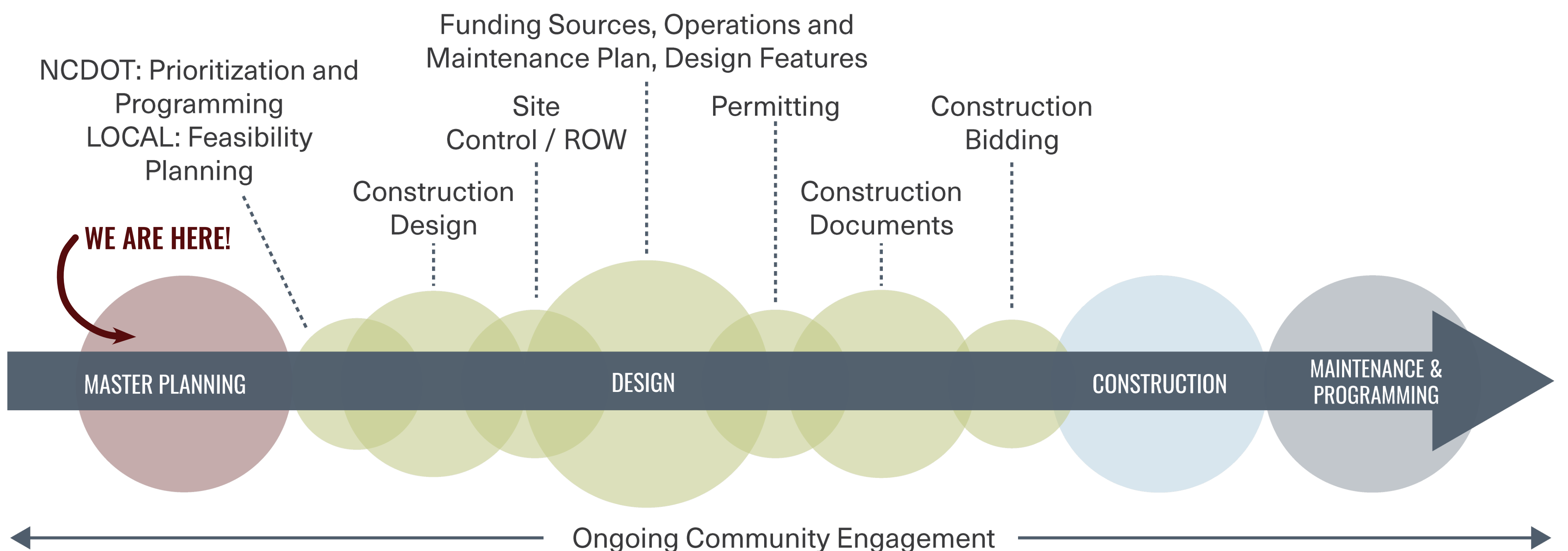
## HOW CAN WE GET AROUND USING...



## PLAN PROCESS



## LIFE CYCLE OF AN ACTIVE TRANSPORTATION PROJECT



**WHO IMPLEMENTS A PROJECT?**

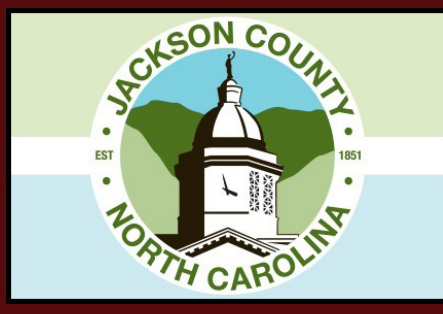
It depends! Most roads in Jackson County are managed by NCDOT, which will partner with the County and local municipality to implement projects such as sidewalks and crossings. The County will likely implement greenways with help from partners.

**WHO PAYS FOR A PROJECT AND HOW MUCH DOES IT COST?**

It depends! Funding for most projects will come from a variety of sources such as the NC Parks and Recreation Trust Fund, NCDOT, non-profit trail partners and foundations, or private funds. Project costs range depending on how complex a project is (or isn't) - see the next question for more about complexity.

**HOW LONG DOES A PROJECT TAKE?**

It depends! The time it takes to implement a project can depend on how uncomplicated or complex the project may be, who "owns" the project (e.g. the County or NCDOT), the type of funding involved, how much land is needed (right of way), and the scale (size) of a project. An example of an uncomplicated project is a new crosswalk. An example of a complex project is a greenway that requires the purchase of private property and crosses streams and busy roadways.



# WHAT JACKSON HAS (SIDEWALKS)

## SIDEWALKS IN JACKSON

### HOW MUCH SIDEWALK?

# 25.5 Miles

There are approximately twenty-five miles of sidewalk in Jackson County. The longest segments are connecting Sylva with Dillsboro and along NC 107.

In the last several years, the County and NCDOT have expanded sidewalks along US 441 south of the Casino. A mid-block crossing was added on US 441.

As Western Carolina University's student body population grows, so does the student housing and the pedestrian infrastructure contained within these developments.

There has been sidewalk expansion along Highway 64 and Frank Allen Rd in Cashiers.



CASHIERS SIDEWALK

### SIDEWALKS FUNDED & MOVING TO CONSTRUCTION?

# 2.5 Miles

The Town of Sylva is partnering with NCDOT to construct a sidewalk along Skyland Drive from Asheville Highway to Chipper Curve.

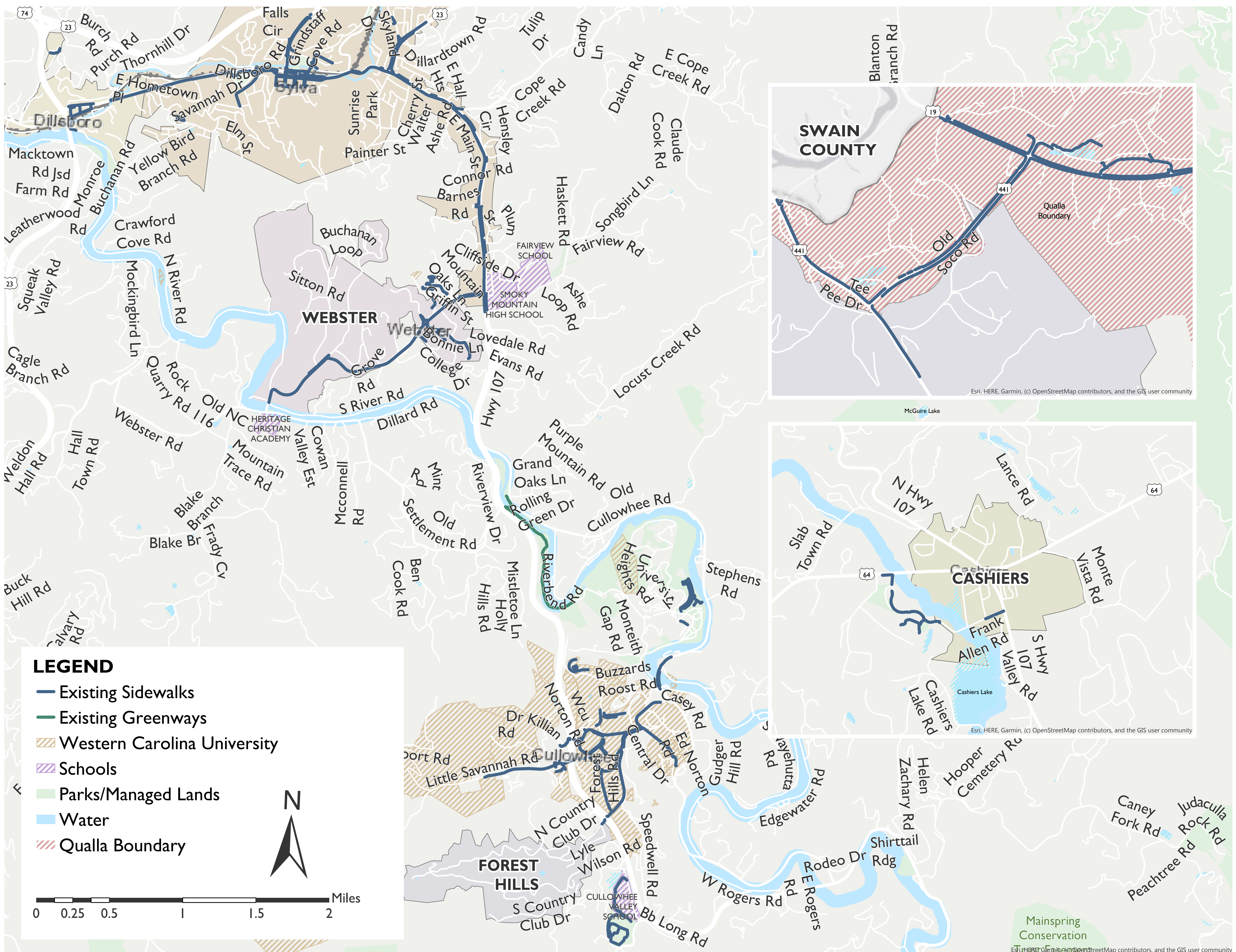
The Highway 107 widening and upgrade project through Sylva will provide continuous sidewalks throughout the corridor. The project is scheduled to be completed in 2026.

NCDOT has a funded road project along Monteith Gap Rd from Old Cullowhee Rd to Ledbetter Rd, which will include pedestrian and bicycle infrastructure.



EXISTING SKYLAND DRIVE SIDEWALK

## MAP 1: SIDEWALKS IN JACKSON





# WHAT JACKSON HAS (GREENWAYS)

## GREENWAYS IN JACKSON

### HOW MUCH GREENWAY?

# 1 Mile

The Jackson County Greenway is 1 mile in length along the Tuckasegee River. When complete, the greenway will total 3.8 miles from near the intersection of NC 107/Locust Creek Road to near the Painter/Monteith Road intersection.

There are other greenway segments around the Cullowhee Recreation Center and the Cashiers/Glenville Recreation Center. These total XX miles in length.



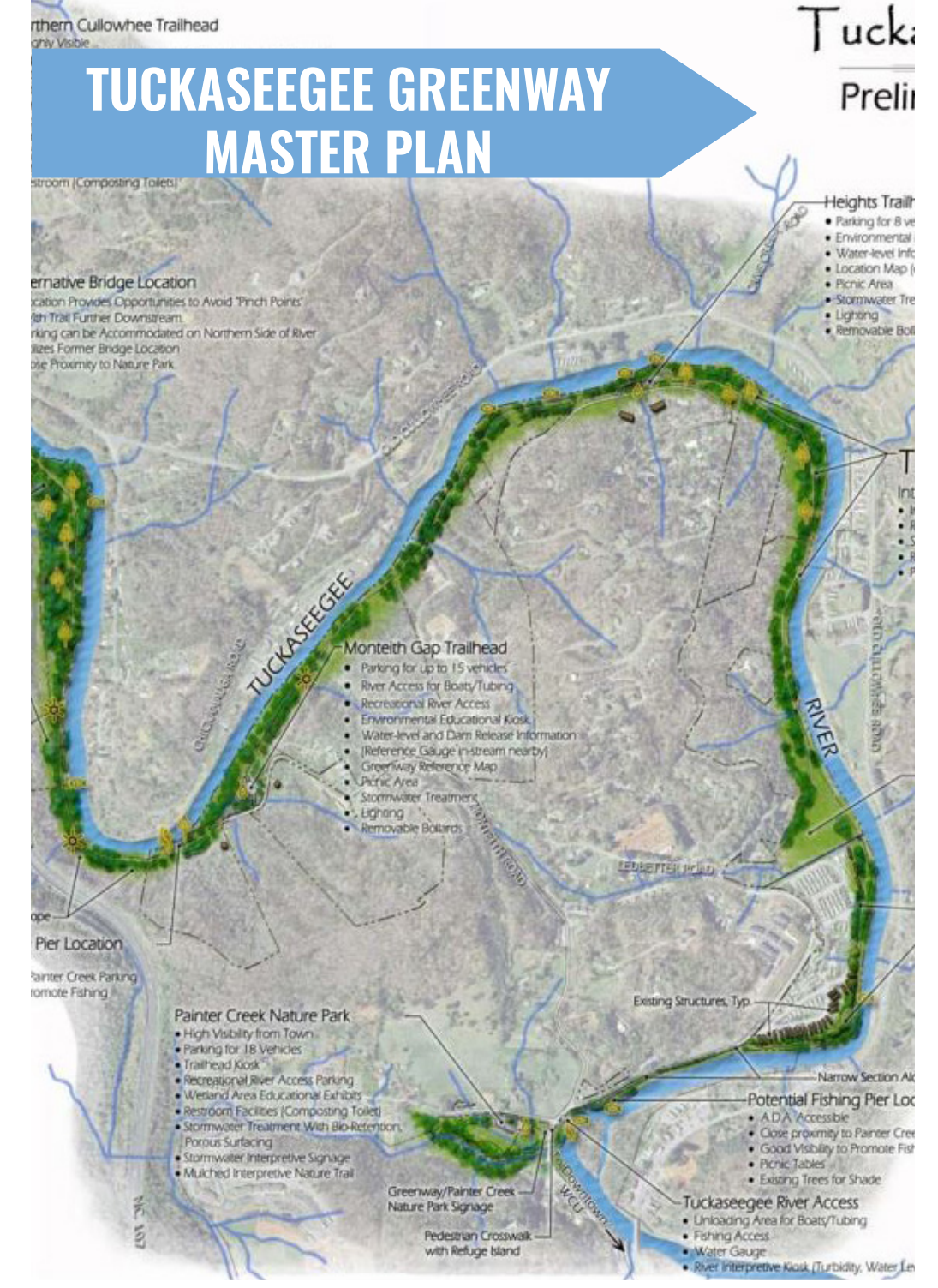
### GREENWAYS IN PLANNING STAGE?

# 3 Trail Studies

Western Carolina University is currently undergoing a feasibility study for a greenway on Cullowhee Creek.

Jackson County last updated its Greenway Master Plan in 2009.

The County developed the Tuckasegee River Greenway Preliminary Master Plan in 2009.



## MAP 2: GREENWAYS IN JACKSON

