

AMAY JAMES URBAN AGRICULTURAL STUDY

PLANNING TEAM



Mecklenburg County
Park and Recreation
Client/Owner

*Land Stewardship, Recreation
Programming, Park Operations, Natural
Resource Management, ADA Compliance
and the North Carolina Cooperative
Extension County Office*



Mecklenburg County
Asset and Facility Management
Project Manager

*Planning, Design, and Construction
Project Management, Real Estate
Coordination*



McAdams Company
Pros Consulting Inc., UDC Urban Ag Dept
Consultant for Planning and Design

*Planning, Design, and Engineering,
Community Engagement, Market Analysis
and Operations Planning,
Urban Agriculture Expert*

STAKEHOLDERS

- › Current Stakeholders
 - West Boulevard Neighborhood Coalition
 - Reid Park Neighborhood Association
 - Three Sisters Market and Seeds for Change
 - Niner University Elementary
 - Reid Park Academy
 - West Side Community Land Trust
 - Mecklenburg County Farm Bureau
 - Mecklenburg Soil and Water Conservation District
 - Mecklenburg County Public Health Department



USDA GRANT SUMMARY

- › Planning grant through USDA's Urban Agriculture + Innovative Production Competitive Grant
- › \$200k Planning Grant
- › Why study Amay James Park?
 1. Effort to re-energize park site
 2. Help address community food insecurity
 3. Opportunity to partner with NC Cooperative Extension
 4. Secure funding for park renovations



URBAN AGRICULTURE PARK

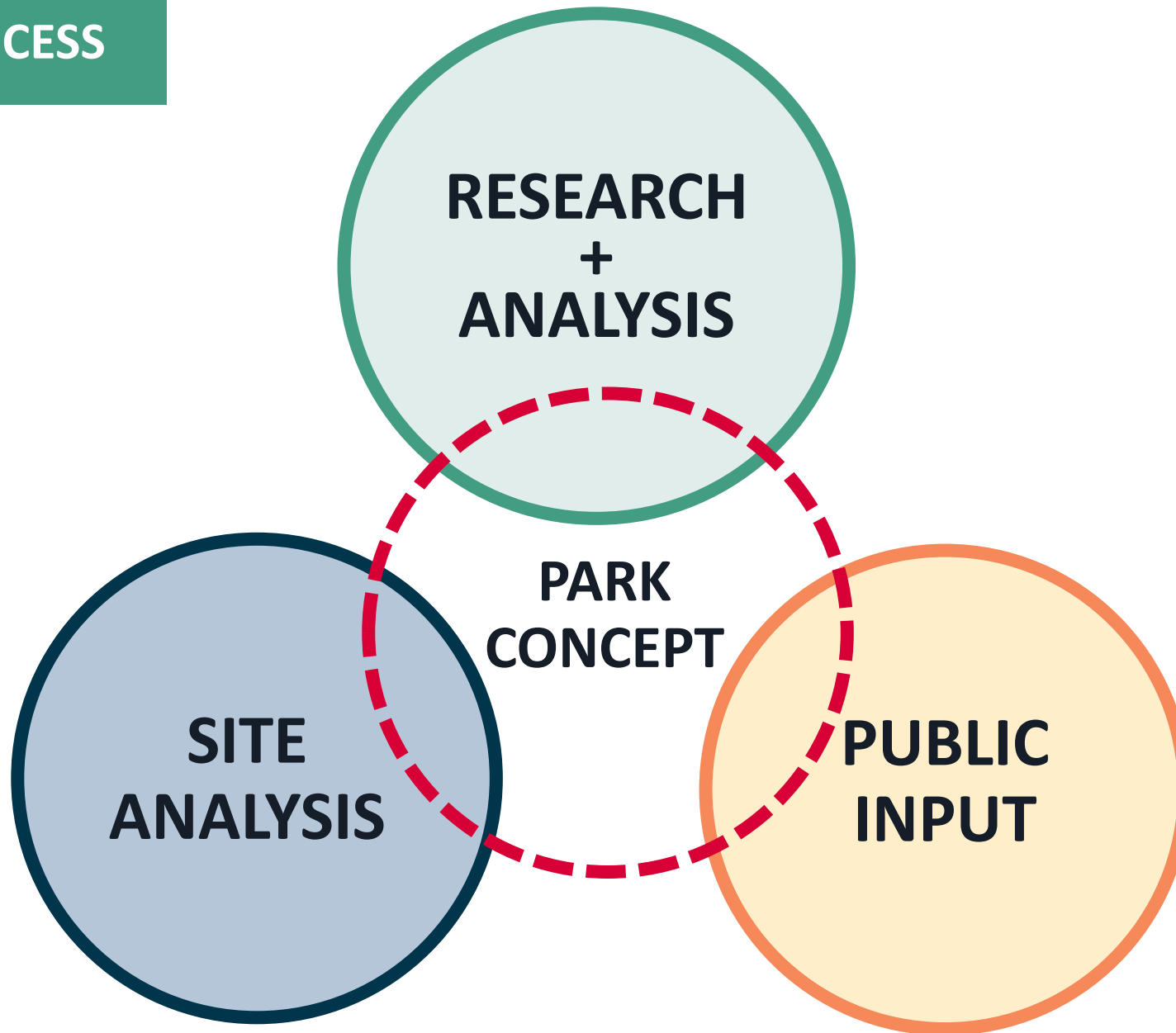
› Definition

- Urban Agricultural Park is a hybrid of two landscape types: a traditional park and an urban farm. It weaves the productive landscape and the recreational landscape into a rich tapestry that aims to celebrate the culture of a place, the relationship of its inhabitants to the land, and their relationship to one another.



MCADAMS

PLANNING PROCESS





RESEARCH + ANALYSIS



URBAN AGRICULTURE FARM TOURS

› Local

- Seeds 4 Change + 3 Sisters Market (Charlotte, NC)
- Carolina Farm Trust (Charlotte, NC)
- Lomax Farm (Concord, NC)

› Regional

- Catawba Trail Farm (Durham, NC)
- Good Hope Farm (Cary, NC)
- Sankofa Farm (Richmond, VA)
- Shaloam Farm (Richmond, VA)
- UDC East Capitol Urban Farm (Washington, DC)
- UDC Lemond Diggs Campus (Washington, DC)
- UDC Vaness Campus (Washington, DC)



URBAN AGRICULTURE FARM TOURS

› Farm Objectives

- Increasing economic quality of life for residents
- Funding: non-profit vs for profit
- Creating regional health, nutrition, and climate change
- Food distribution systems: food donations vs 3-tiered pricing (pay as you can)
- Community ownership + use
- Sustainability



URBAN AGRICULTURE FARM TOURS

› Farm Amenities

- Structure: greenhouse(s), convexes, propagation stations, demonstration space, commercial test kitchen(s), walk-in fridge
- Community Garden(s)
- Recreational Opportunities (e.g. walking trails)
- Packaging + cleaning area
- Mobile Market
- Performance Space
- Aquaponics + Hydroponics
- Apiary (Bee Keeping)
- Public Art



URBAN AGRICULTURE FARM TOURS

› Programming

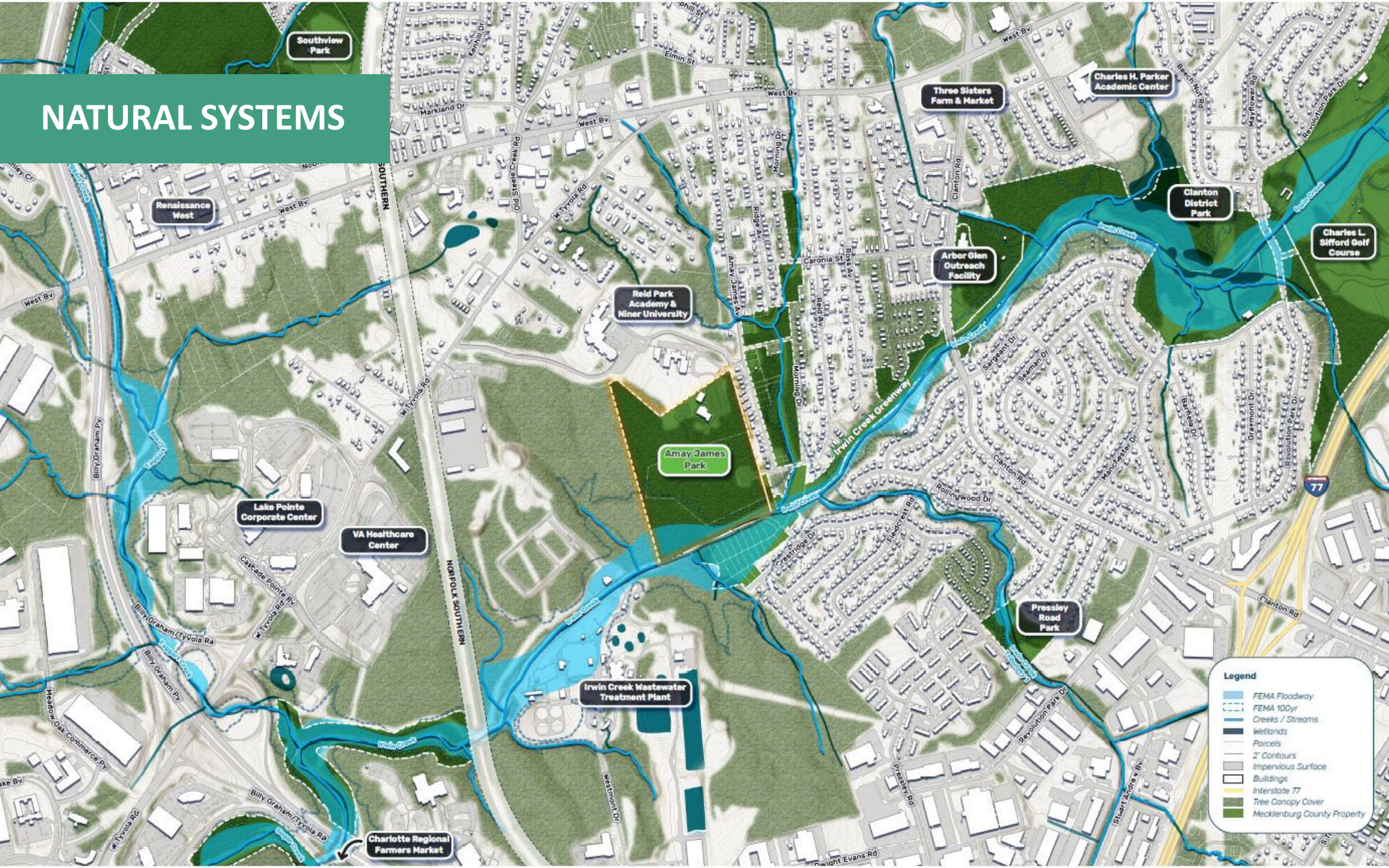
- Youth Urban Farming (teaching skills + employment opportunities)
- Farmer Training Program
- Incubator Farm
- Volunteering
- Education
- Research
- Community Events
- STEM



A photograph of a wooded area with a grassy clearing and a building in the background. The text "SITE ANALYSIS" is overlaid in the center. The scene is framed by several large trees in the foreground, with a dense forest in the background. A building with vertical siding is visible through the trees. The ground is covered with grass and fallen leaves.

SITE ANALYSIS

NATURAL SYSTEMS



Legend

- FEMA Floodway
- FEMA 100yr
- Creeks / Streams
- Wetlands
- Parcels
- 2' Contours
- Impervious Surface
- Buildings
- Interstate 77
- Tree Canopy Cover
- Mecklenburg County Property

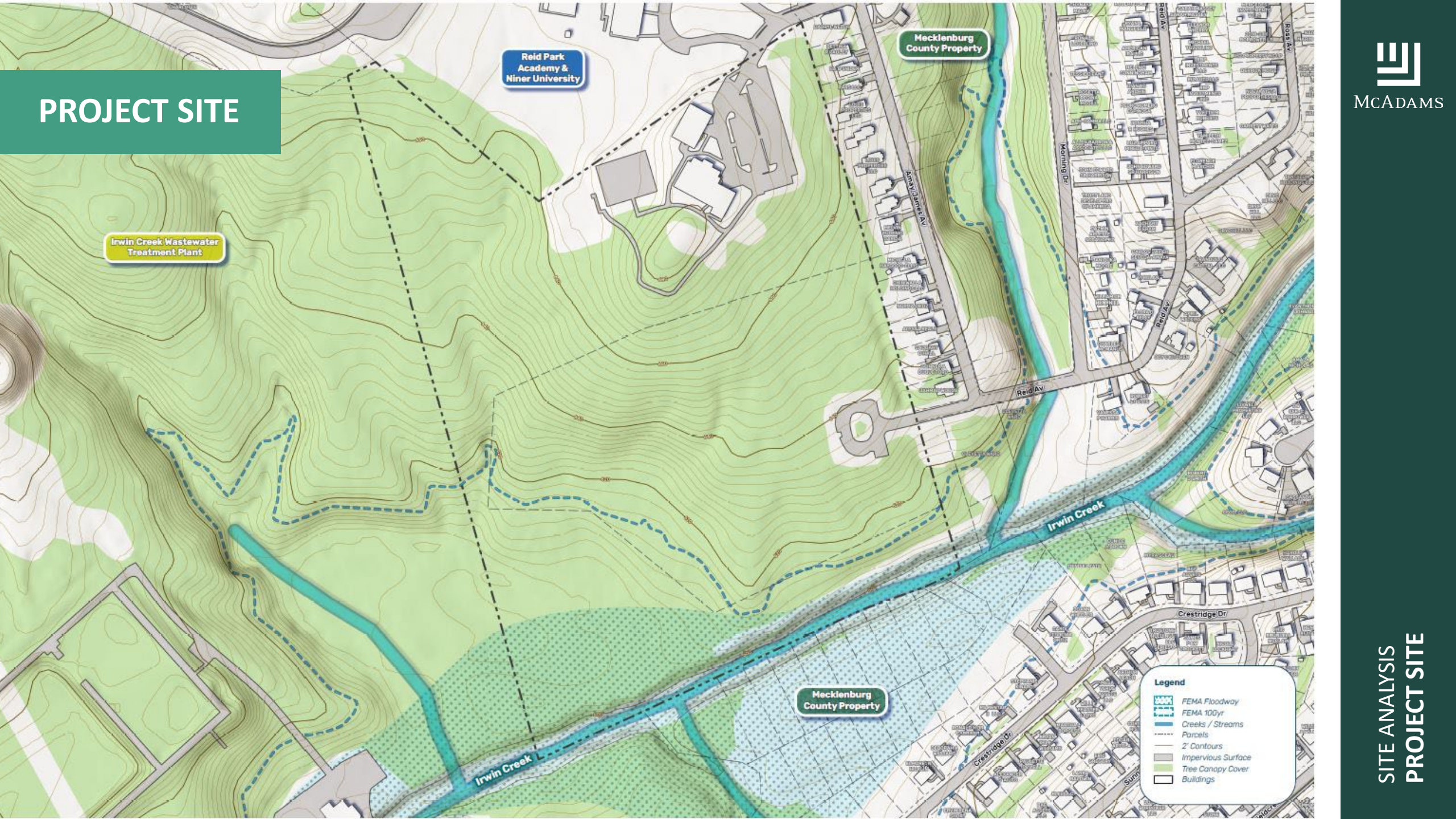
SITE CONTEXT



Legend

- FEMA Floodway
- FEMA 100yr
- Creeks / Streams
- Parcels
- 2' Contours
- Impervious Surface
- Buildings
- Tree Canopy Cover
- Mecklenburg County Property
- City Of Charlotte Property
- School Property
- School Buildings
- Places of Worship
- Bus Routes
- Bus Stops
- Posted Bicycle Routes
- Existing Greenways
- Proposed Greenways

PROJECT SITE



Irwin Creek Wastewater Treatment Plant

Reid Park Academy & Niner University

Mecklenburg County Property

Mecklenburg County Property

Legend

- FEMA Floodway
- FEMA 100yr
- Creeks / Streams
- Parcels
- 2' Contours
- Impervious Surface
- Tree Canopy Cover
- Buildings



PUBLIC INPUT

Historic Analysis
3D MAPPING?
QR CODES

EAGLEST

THE BLOCK



HOW CAN I PARTICIPATE?



QR CODE TO PROJECT WEBSITE
OR GO TO

WWW.PUBLICINPUT.COM/AMAYJAMESPARK



Use Your Voice!

Share Your History!

Amay James Recreation Center
Presents

**A Black History Month Celebration
of Community + Collective History!**

**February 17, 2024
11am - 1pm**

Come Join Us For
Food, Games, Hoop Contest, Storytelling,
Quilt Making, and More!

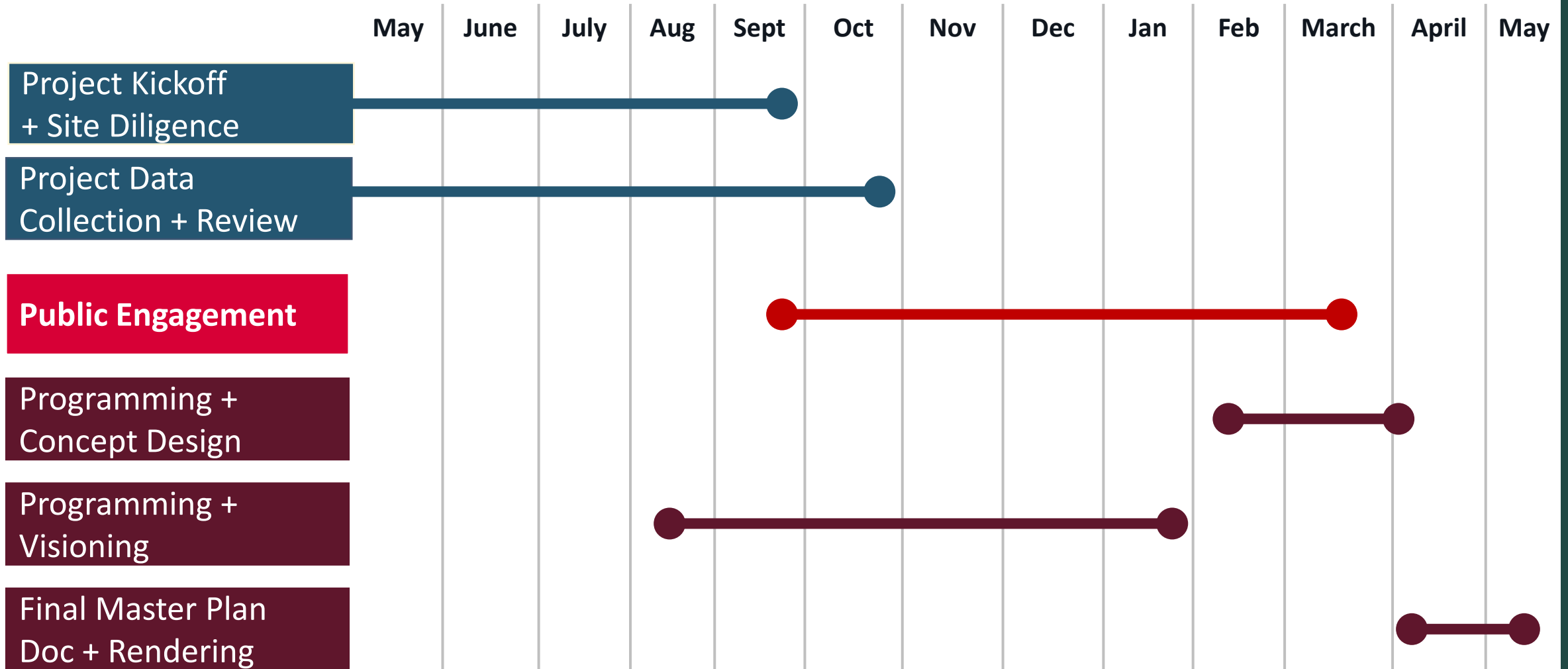
WE ARE BLACK HISTORY!

Celebrate your community history with us! Bring your photos, documents, or other memories related to Charlotte's community history. The J. Murrey Atkins Library at UNCC will be on site to scan them, return them, and provide you with a flash drive copy at no cost.

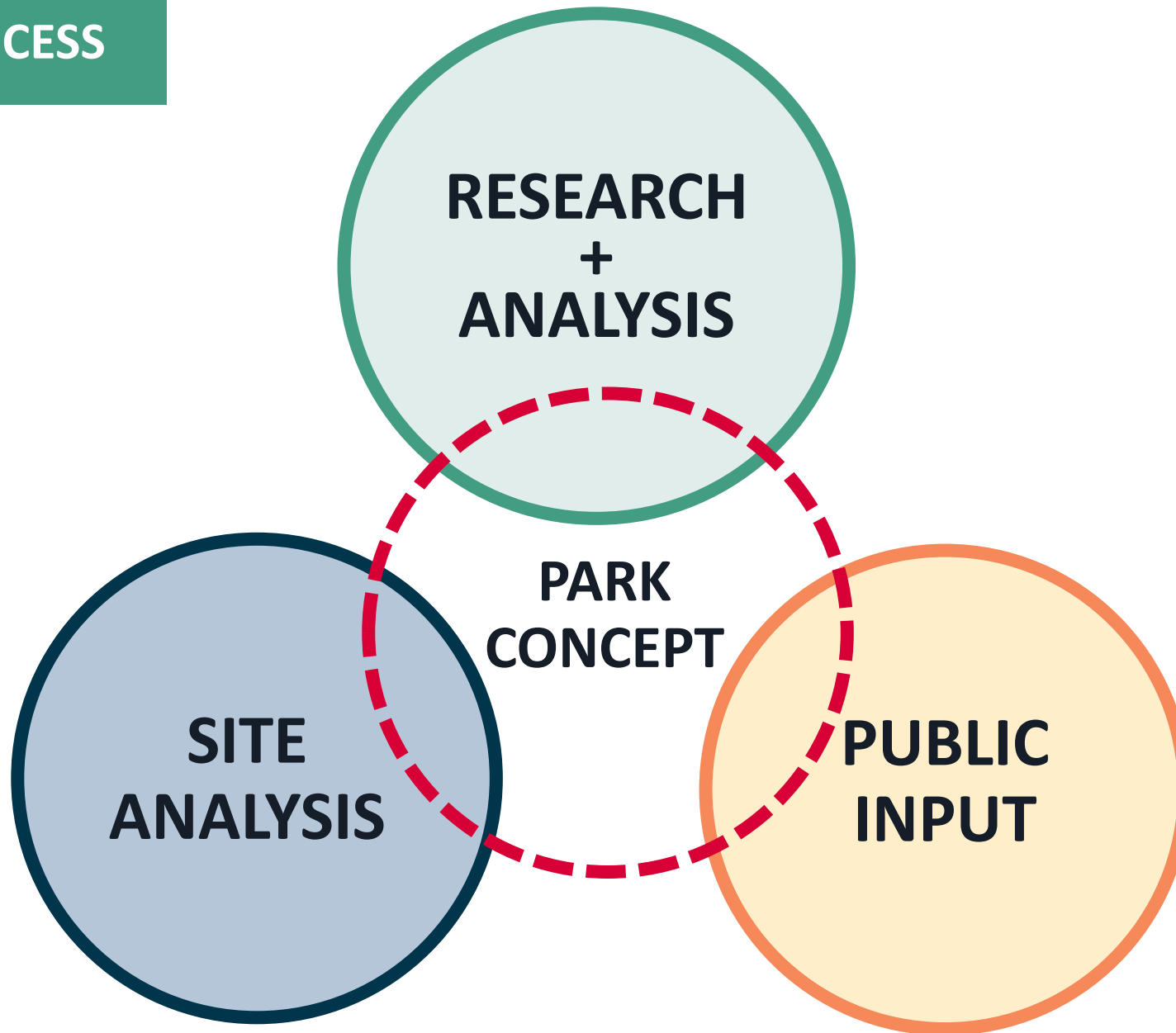


Amay James Recreation Center
2425 Lester St. Charlotte, NC 28208
(980) 314-2572

PROJECT SCHEDULE



PLANNING PROCESS



THANK YOU!

