

CITY OF SALEM

RAYMOND ROAD

FROM LORING AVENUE



GENERAL NOTES

1. THE CONTRACTOR SHALL COMPLY WITH ALL APPLICABLE FEDERAL, STATE, AND LOCAL LAWS, RULES, REGULATIONS AND SAFETY CODES IN THE CONSTRUCTION OF ALL IMPROVEMENTS. SIGN AND STRIPING WORK SHALL ALSO MEET ALL APPLICABLE REQUIREMENTS OF THE MANUAL OF UNIFORM TRAFFIC CONTROL DEVICES (MUTCD).
2. BASE MAPPING WAS PREPARED FROM AUTOCAD GEOLOCATION AERIAL IMAGERY, CITY OF SALEM GIS DATA, AND FIELD MEASUREMENTS.
3. THE CONTRACTOR SHALL VERIFY BASE MAPPING IN THE FIELD PRIOR TO PLACING STRIPING OR SYMBOLS AND REPORT ANY DISCREPANCIES TO THE ENGINEER PRIOR TO START OF WORK. WHEN THESE PLANS ARE IN CONFLICT WITH ACTUAL SITE CONDITIONS, THE CONTRACTOR SHALL CONTACT THE CITY AND ENGINEER. PROPOSED STRIPING MAY ONLY BE ADJUSTED AS DIRECTED BY THE ENGINEER.
4. DRIVEWAYS LOCATIONS SHOWN ARE APPROXIMATE AND MAY BE MISSING FROM THE DRAWING..
5. MARKED CROSSWALKS SHOWN ON THE DRAWINGS ARE APPROXIMATE AND NOT ALL CROSSWALKS ARE SHOWN.
6. THE CONTRACTOR SHALL TAKE ADEQUATE PRECAUTIONS TO PROTECT ALL WALKS, GRADING, SIDEWALKS, AND FEATURES OUTSIDE OF THE LIMITS OF WORK AND SHALL REPAIR AND REPLACE OR OTHERWISE MAKE GOOD ANY SUCH OR OTHER DAMAGE CAUSED BY CONTRACTOR AT NO ADDITIONAL COST AS DIRECTED BY THE ENGINEER OR OWNER'S DESIGNATED REPRESENTATIVE.
7. THE EXISTING STREET VARIES IN WIDTH, CONTRACTOR SHALL ESTABLISH A WORKING CENTERLINE TO BE EQUIDISTANT BETWEEN CURBS.

QUANTITIES SUMMARY

ITEM	IMAGE	UNIT SIZE		UNIT	QUANTITY	NOTES	DETAILS
		W	H				
SPEED HUMPS		20.1'	2"	EA	6	2 END CAPS AND 10 CENTER PIECES (EA) TOTAL: 12 END CAPS AND 60 CENTER PIECES	SEE TREETOP STANDARD SPEED HUMPS DETAIL
SAFETY ZONE SPEED LIMIT 20 SIGN SIGN CODE MA-R2-8		24"	42"	EA	3	-	SEE MUTCD STANDARD DETAIL
SPEED HUMPS SIGN SIGN CODE W17-1		30"	30"	EA	2	MOUNT ON P-5 POST (2 POSTS REQUIRED)	SEE MUTCD STANDARD DETAIL

INDEX

SHEET NO.	PLAN TITLE
1	TITLE SHEET, NOTES, QUANTITIES SUMMARY
2-3	PAVEMENT MARKING AND SIGNAGE

ALL WORK SHALL CONFORM TO THESE PLANS, AND THE MOST RECENT VERSIONS OF THE MANUAL ON UNIFORM TRAFFIC CONTROL DEVICES FOR STREETS AND HIGHWAYS. IN THE EVENT OF CONFLICTS OR DISCREPANCIES, THE ENGINEER SHALL BE CONTACTED FOR RESOLUTION.



neighborwaysdesign

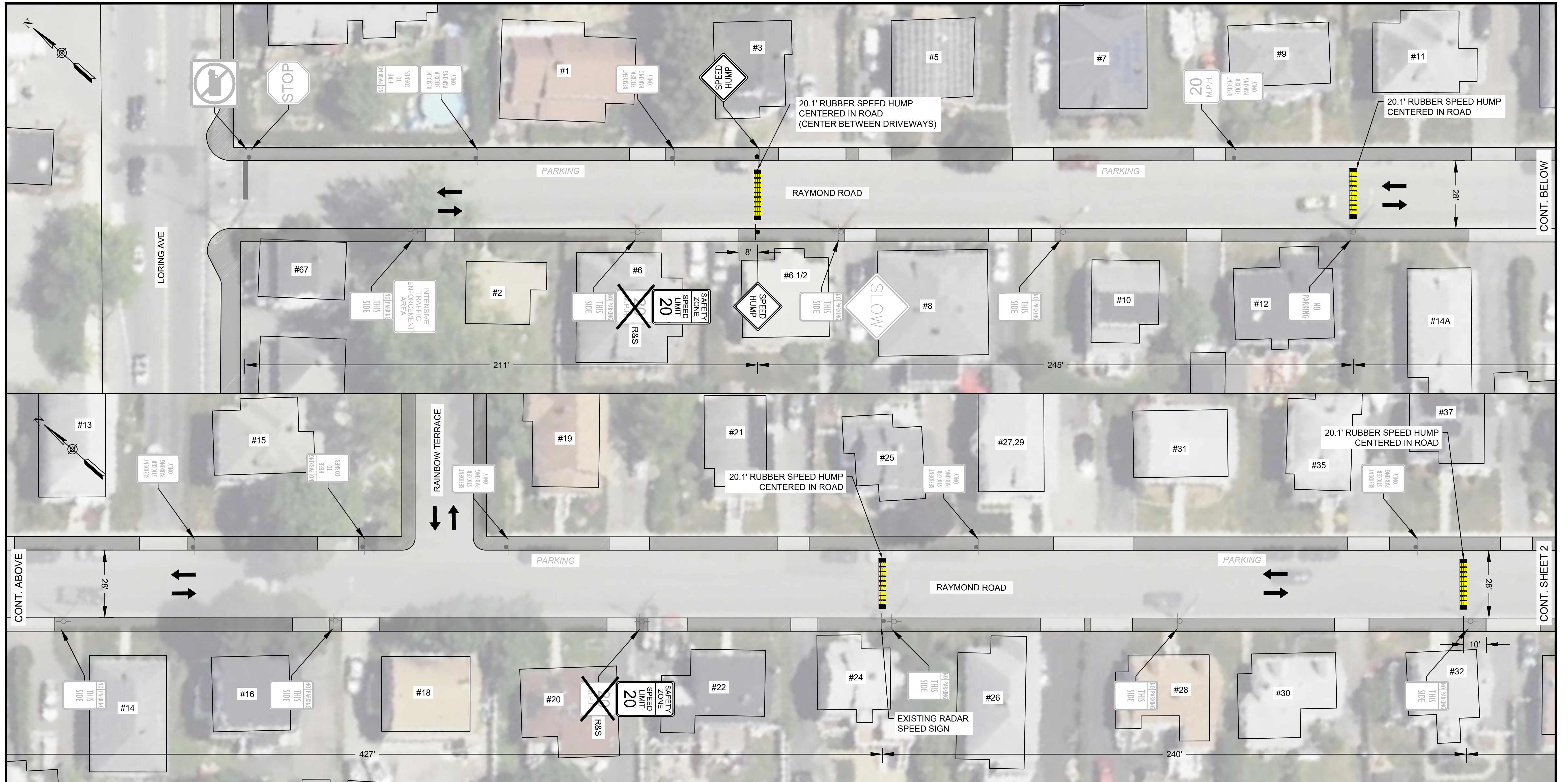
MOYER
Transportation Engineering



TITLE SHEET AND NOTES

RAYMOND ROAD
CITY OF SALEM, MA

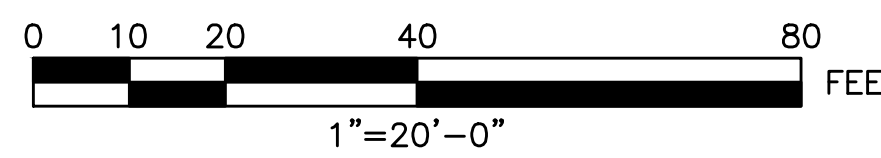
DESIGNED BY:	DM	DATE:	6/6/2023
PREPARED BY:	DM	SHEET:	01 OF 03
CHECKED BY:	JM		



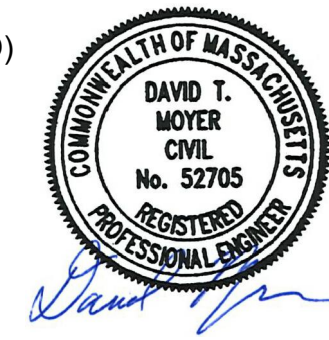
LEGEND AND ABBREVIATIONS

EXISTING	PROPOSED	DESCRIPTION
	CONT	CONTINUED EXISTING
	EQ	EQUAL MOUNT
	MNT	ON CENTER SPACING
	O.C.	REMOVE AND RESET TYPICAL
	R&R	NEW OR RELOCATED SIGN
	TYP	SIGN POST
		HYDRANT
		UTILITY POLE
		LIMIT OF PAVEMENT MARKINGS
		MATCHLINE

EXISTING	PROPOSED	DESCRIPTION
	SWEL	4" SOLID WHITE EDGE LINE
	SL	12" MINIMUM WHITE STOP LINE (UNLESS OTHERWISE NOTED)
	CW	12" MINIMUM WHITE CROSSWALK LINES 9' O.C.
	SWCHL	8" SOLID WHITE CHANNELIZATION LINE (SWCHL) 10' O.C. AT 45° UNLESS OTHERWISE NOTED



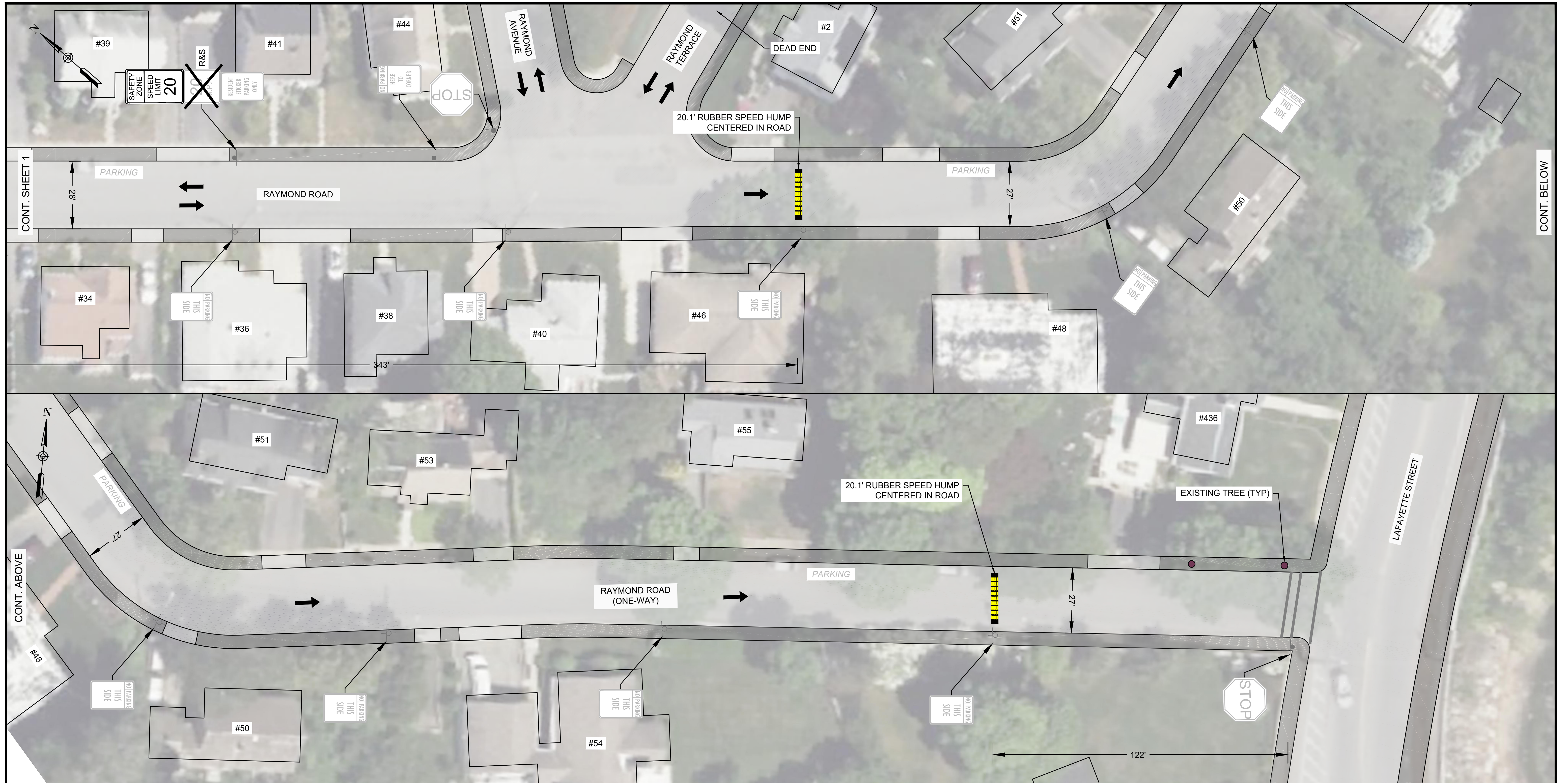
- SPEED HUMP INSTALLATION NOTES:**
- INSTALL TEMPORARY RUBBER SPEED HUMPS AS SHOWN ON PLANS AND ENSURE:
 - 4' MAX OFF OF CURB
 - 10' MIN FROM DRIVEWAYS AND WALKWAYS (UNLESS OTHERWISE NOTED)
 - 20' MIN FROM CROSSWALKS AND INTERSECTIONS
 - DO NOT INSTALL TEMPORARY SPEED HUMPS OVER ANY VALVES, MANHOLES, DRAINAGE STRUCTURES, WATER GATES, OR OTHER SURFACE UTILITY.



PAVEMENT MARKING AND SIGNAGE

RAYMOND ROAD
CITY OF SALEM, MA

DESIGNED BY:	DM	DATE:	6/6/2023
PREPARED BY:	DM	SHEET:	02 OF 03
CHECKED BY:	JM		



CONT. SHEET 1

CONT. BELOW

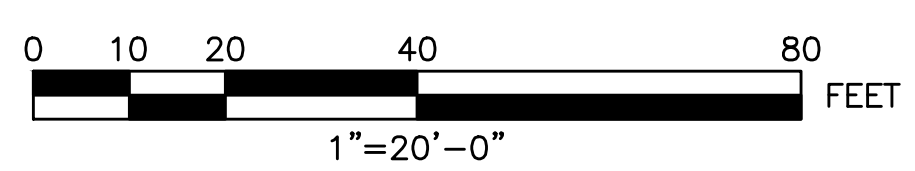
CONT. ABOVE

LEGEND AND ABBREVIATIONS

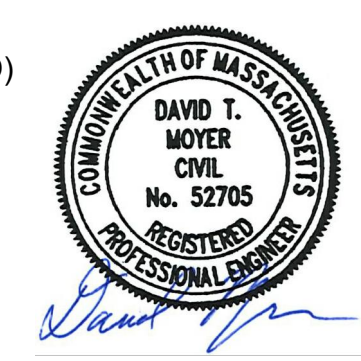
EXISTING	PROPOSED	
		CONTINUED EXISTING EQUAL MOUNT ON CENTER SPACING REMOVE AND RESET TYPICAL
		NEW OR RELOCATED SIGN
		SIGN POST
		HYDRANT
		UTILITY POLE
		LIMIT OF PAVEMENT MARKINGS
		MATCHLINE

EXISTING	PROPOSED

4" SOLID WHITE EDGE LINE
 12" MINIMUM WHITE STOP LINE (UNLESS OTHERWISE NOTED)
 12" MINIMUM WHITE CROSSWALK LINES 9' O.C.
 8" SOLID WHITE CHANNELIZATION LINE (SWCHL)
 10' O.C. AT 45° UNLESS OTHERWISE NOTED



- SPEED HUMP INSTALLATION NOTES:**
- INSTALL TEMPORARY RUBBER SPEED HUMPS AS SHOWN ON PLANS AND ENSURE:
 - 4' MAX OFF OF CURB
 - 10' MIN FROM DRIVEWAYS AND WALKWAYS (UNLESS OTHERWISE NOTED)
 - 20' MIN FROM CROSSWALKS AND INTERSECTIONS
 - DO NOT INSTALL TEMPORARY SPEED HUMPS OVER ANY VALVES, MANHOLES, DRAINAGE STRUCTURES, WATER GATES, OR OTHER SURFACE UTILITY.



PAVEMENT MARKING AND SIGNAGE

RAYMOND ROAD
CITY OF SALEM, MA

DESIGNED BY:	DM	DATE:	6/6/2023
PREPARED BY:	DM	SHEET:	03 OF 03
CHECKED BY:	JM		