

2022-2027

BOND

PROGRAM

City of San Antonio



PUBLIC WORKS

Nani Falcone Park

Public Input Meeting #3

March 6, 2024 | Presented by Public Works

Agenda

- Welcome and Introductions
- Project Information
- Consultant Presentation
- Public Comments & Questions

2022-2027

BOND

PROGRAM

City of San Antonio



PROPOSED 2022-2027

BOND PROGRAM

City of San Antonio



INFORMATION GUIDE



APPROVED

May 7, 2022



Nani Falcone Park

Project Staff & Design Team

- **Project Design Team:**
 - Studio Balcones: Jennifer Orr, Kat Mays, Allison Bodin

- **COSA Staff:**
 - Tony Forshage – Parks and Rec. Asst. Manager
 - Eric Reyna – Parks and Rec. – PM
 - Jamaal Moreno – Sr. Landscape Architect - PWD
 - Sean Duncan – Landscape Architect- PM -PWD

Nani Falcone Park

Project Scope

- 2022-2027 Bond Program
 - Under Proposition C: Parks, Recreation, and Open Space Improvements funded 82 projects totaling \$271.915 million
 - Project Funding for Nani Falcone: \$750,000
- Bond Language Scope:
 - General park improvements within available funding.

Nani Falcone Park

Project Background

- 2012-2017 Bond: Park received \$466,000 for general park improvements and parking expansion.
 - Final scope included a 44,000 square foot dog park, drinking fountain, trash receptacles, bike rack, new entry drive, new parking for 13 vehicles and overflow temporary turf parking for an additional 17 vehicles.
- 2017-2022 Bond: Park received \$250,000 for general park improvements.
 - Final scope included two shade canopies in the dog park with associated accessible walkway, 6 solar powered security lights in the existing parking lots along Mystic Park Drive, and wheel stops installed in the turf parking areas to help maximize parking efficiency.
- Other existing amenities include a Disc Golf Course, pavilion, educational overlook, playground, skate plaza, portable restrooms, and a 1.10 mi walking trail.

Nani Falcone Park

Meeting Purpose

- This project included a Conceptual Plan for the recently acquired 9-acres off Guilbeau Road, expanding the park to 74.3 acres.
- The conceptual plan helped develop a community vision for the 9-acres that responds to the site's opportunities and constraints and that is complementary to the existing park.
- Based on preliminary voting at the end of the last meeting, the presentation tonight will look at options for items receiving the highest vote tally



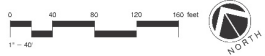
Nani Falcone Park

Dots from Community Public Meeting #2Community

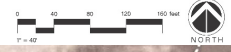
Nani Falcone Park - Northeast Corner Enlargement

Legend (Proposed Improvements Only)

1. Additional Parking w/ Drop-Off
2. Meadow - No Mow Zone
3. Shade Sail
4. Temporary Ballfield Relocation
5. Play Berm
6. Restroom
7. Play Area
 (Trike Track, Nature Play, Splash Pad)
8. Youth Ball Field
9. Dog Park Updates
 (Re-mulch area, Agility course,
 Shade Sail, Water spout)
10. Upgrade traffic calming devices recommended
 (Speed bump or traffic light)
11. Children's Pump Track
12. Open Lawn



Nani Falcone Park - South Enlargement



Nani Falcone Park

Trailhead at Guilbeau Road

- Phase 1 Development
 - 29 pervious parking stalls
 - Bioswale feature
 - Limestone seating
 - Water fountain
 - Bike repair station
 - Bike racks
 - Trash and recycle receptacles
 - Trail Signage
 - Landscaping
- Phase 2 development (unfunded)
 - 50 pervious parking stalls

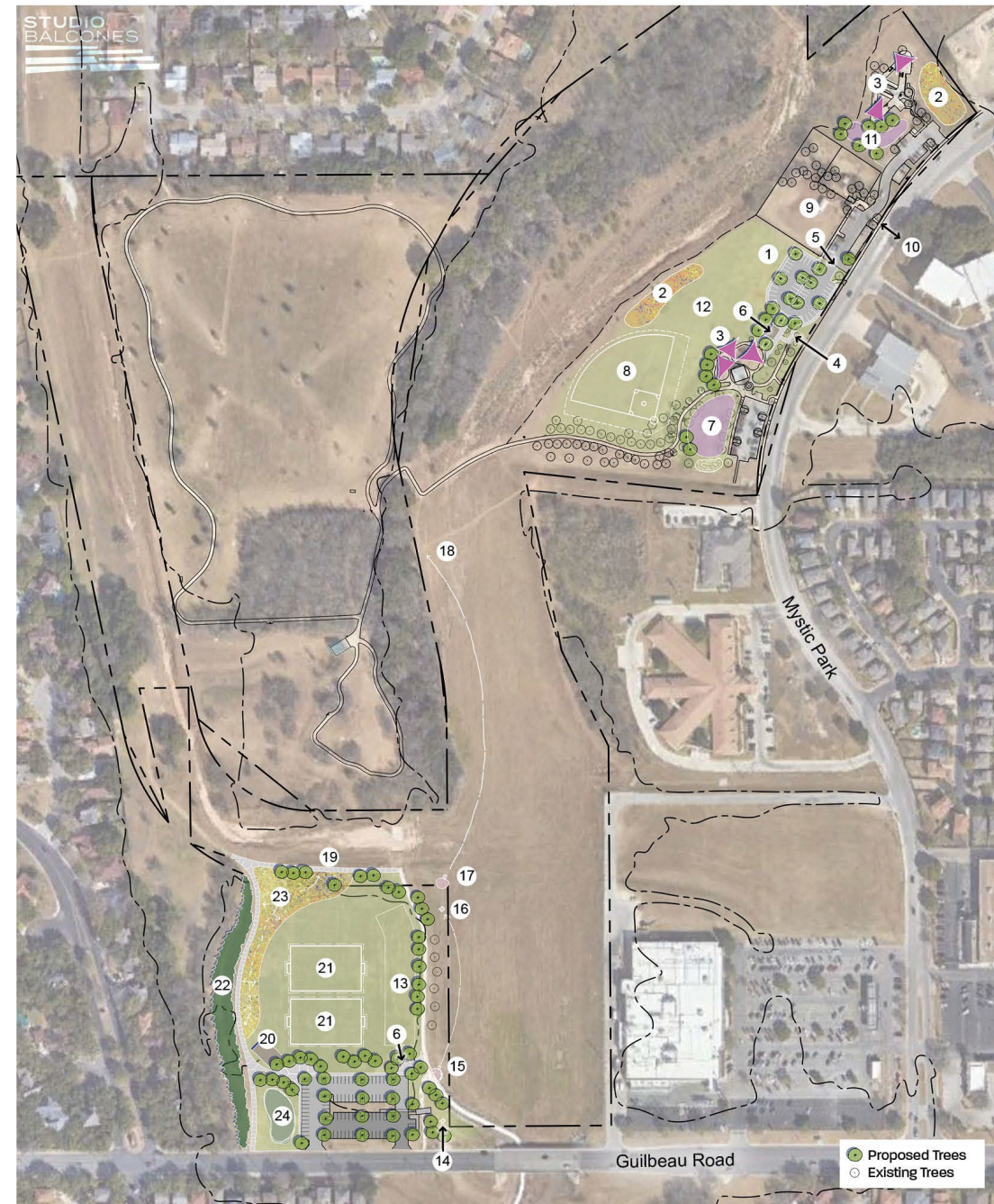


Nani Falcone Park

Overall Plan

(SB – presentation)

- Conceptual Long-Term Plan Developed using feedback from the past two public meetings.
- First Meeting held: September 5th, 2023
- Second Meeting held: November 9th, 2023



Nani Falcone Park - Overall Plan

Nani Falcone Park

Northeast Corner Enlargement (SB – presentation)

Nani Falcone Park - Northeast Corner Enlargement

Legend (Proposed Improvements Only)

1. Additional Parking w/ Drop-Off
2. Meadow - No Mow Zone
3. Shade Sail
4. Connection to existing conc. sidewalk
5. Connection to existing parking lot
6. Future Restroom
7. Play Area
(Trike Track, Nature Play, Splash Pad)
8. Youth Ball Field
9. Dog Park Updates
(Re-mulch area, Agility course,
Shade Sail, Water spout)
10. Upgrade traffic calming devices recommended
(Speed bump or traffic light)
11. Children's Pump Track
12. Open Lawn



2022-2027
BOND
 PROGRAM
 City of San Antonio

Nani Falcone Park

South Enlargement (SB – presentation)

Nani Falcone Park - South Enlargement

Legend (Proposed Improvements Only)

- | | |
|------------------------------|--|
| 13. Future Sport Courts Area | 20. Covered Pavilion |
| 14. Disc Golf Putting Area | 21. Youth Soccer Field |
| 15. Disc Golf - Tee #1 | 22. Reforestation Edge of Park |
| 16. Disc Golf - Hole #1 | 23. Meadow - No Mow Zone |
| 17. Disc Golf - Tee #2 | (w/ gravel paths) |
| 18. Disc Golf - Hole #2 | 24. Pollinator Garden / Fruiting Trees |
| 19. Looped Trail (.34 miles) | |



Nani Falcone Park - South Enlargement

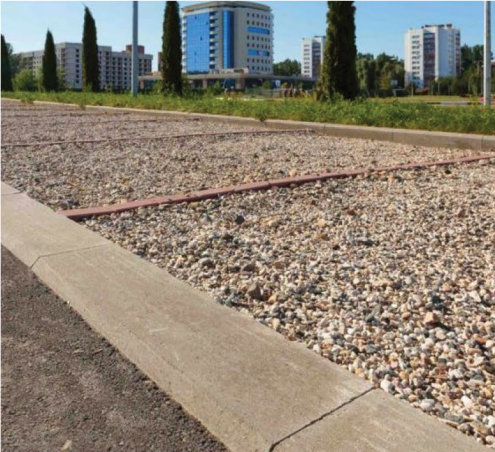


Nani Falcone Park

Project Scope

- 2022-2027 Bond Program
 - Construction Cost Funding for Nani Falcone Improvements: \$500,000
- Studio Balcones has assembled two possible construction packages.
 - We want to hear feedback to decide which package is preferred by YOU ALL!

PACKAGE A



1 New Parking Lot at North side of the park



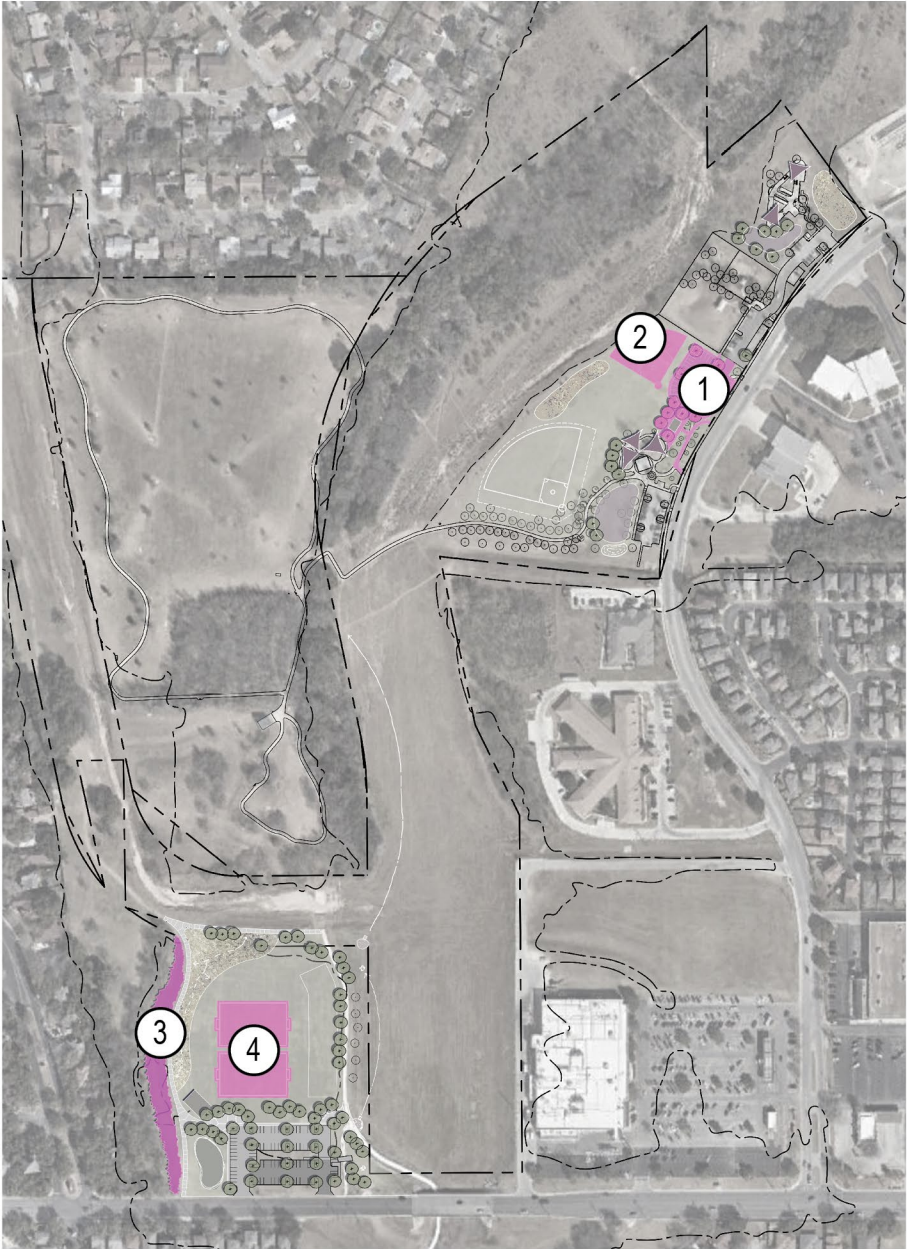
2 Relocated Ball Field



3 Reforestation at new 9 acres



4 Pickup Soccer Fields at new 9 acres



CONTEXT MAP



PARKING LOT OPTIONS

CONTEXT MAP



A.1 - PARKING LOT - OPTION 1



Option 1 - 31 Parking Spaces

A.2 - PARKING LOT - OPTION 2



Option 2 - 34 Parking Spaces

A.1 - PARKING LOT - OPTION 1



LEGEND

- ① CONNECTION FROM EXISTING PARKING
- ② GRAVEL PARKING STALL
- ③ PEDESTRIAN CONNECTION FROM NORTH
- ④ ENTRY PLAZA / SHADED DROP-OFF
- ⑤ FUTURE RESTROOM
- ⑥ GRAVEL PATHWAY LEADING DIRECTLY TO PLAY AREA
- ⑦ EXISTING SIDEWALK

Pros

- 31 Parking Spaces (including 4 accessible stalls near drop-off)
- Provides better connection from north to playground connection.
- Shaded pedestrian waiting area near drop-off
- Less hardscape - more environmentally friendly and cost-effective.
- Incorporates organic forms to complement the existing park aesthetics

Cons

- Less parking stalls than option 2.

A.2 - PARKING LOT - OPTION 2



LEGEND

- ① CONNECTION FROM EXISTING PARKING
- ② GRAVEL PARKING STALL
- ③ PEDESTRIAN CONNECTION FROM NORTH
- ④ ENTRY PLAZA / SHADED DROP-OFF
- ⑤ FUTURE RESTROOM
- ⑥ FUTURE RESTROOM
- ⑦ EXISTING SIDEWALK

Pros

- 34 Parking Spaces (including 4 accessible stalls near drop-off)
- Well-defined central pathway connecting the dog park & skate park to the rest of the park.
- Provides more plaza space around future restrooms.
- Enhances the park's entrance for a more inviting atmosphere.

Cons

- More costly – leaves less of the bond fund for other amenities.

PACKAGE B



1 Shade sails at skate park



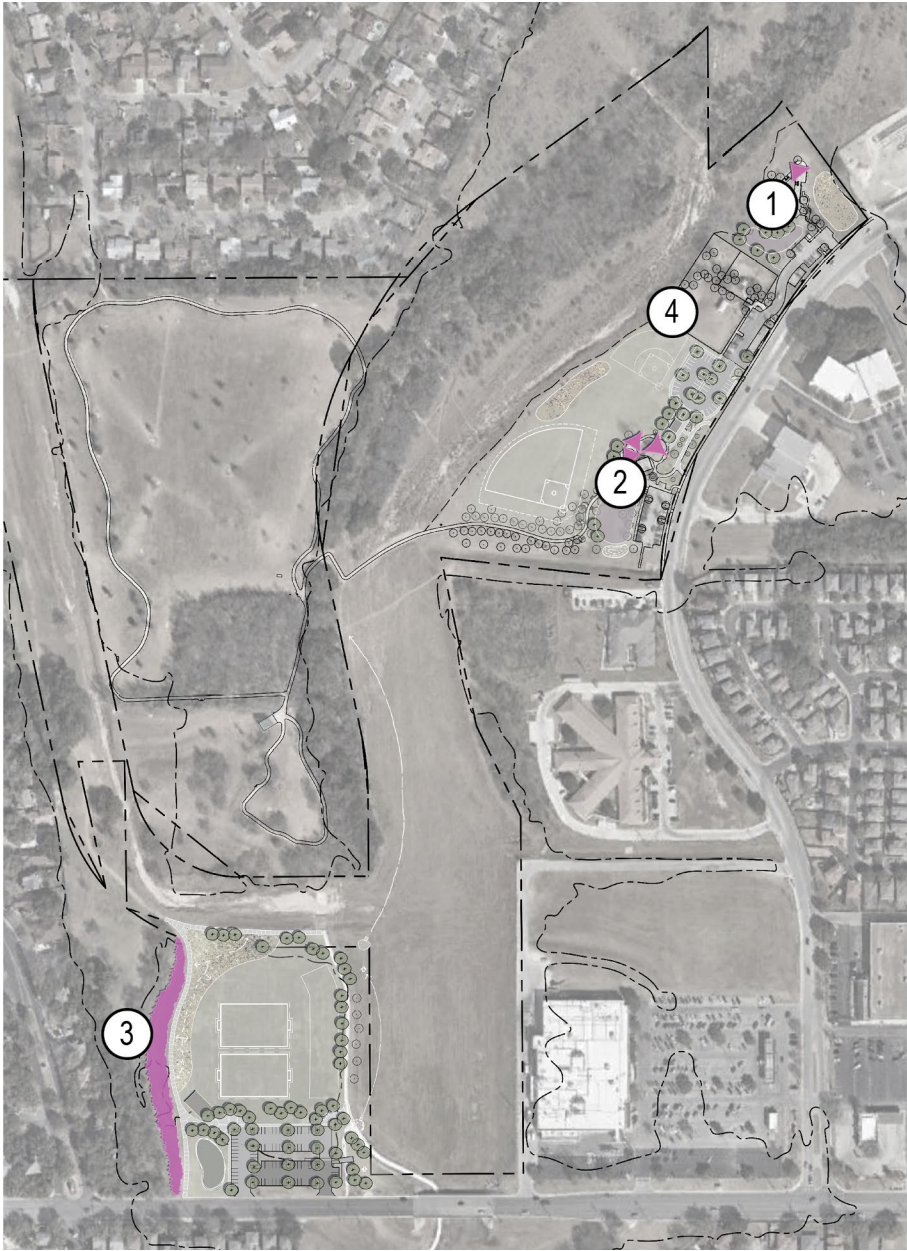
2 Shade sails at playground



3 Reforestation at new 9 acres



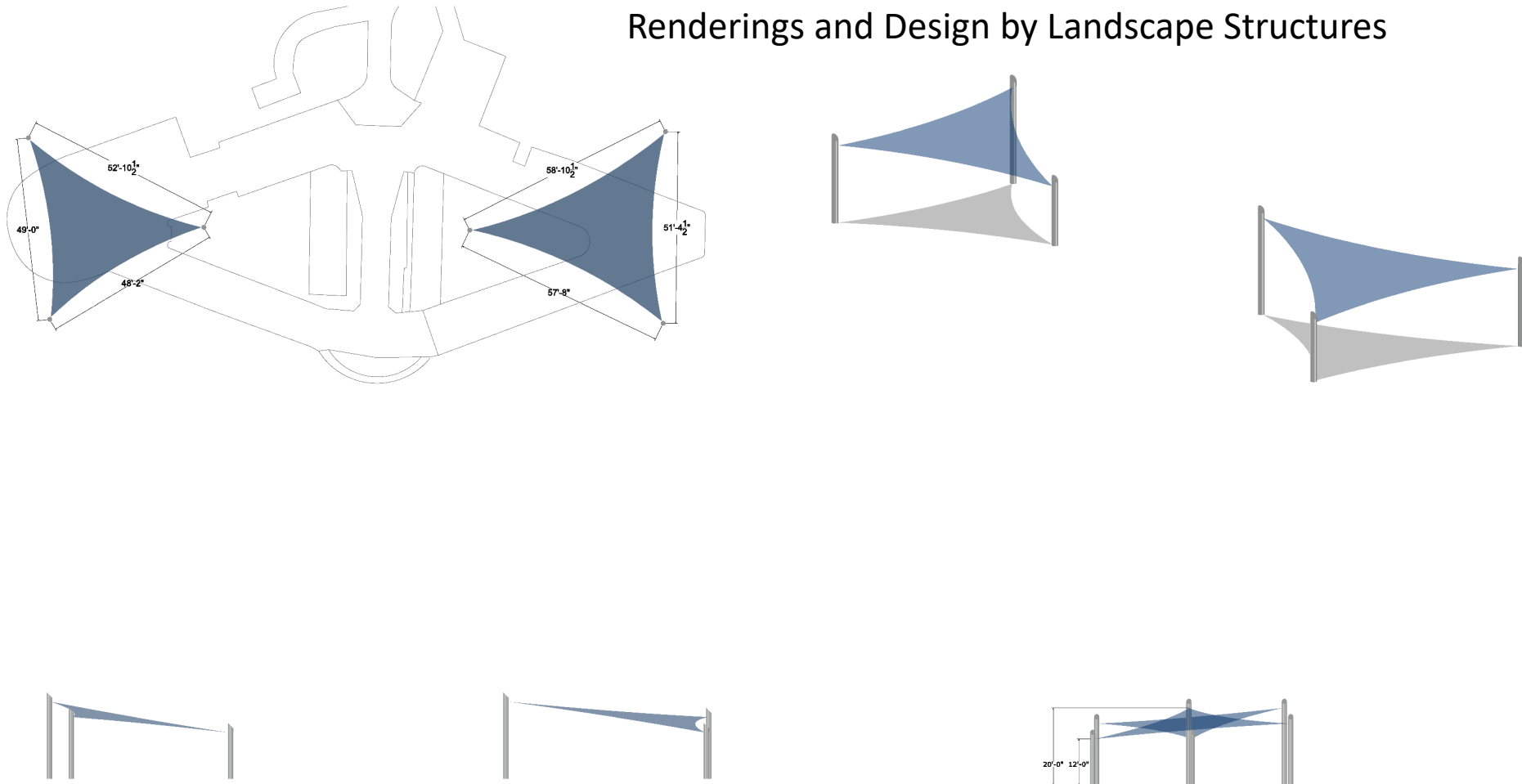
4 Mulch for existing trees



Nani Falcone Park

Shade Sails at Skate Park (SB – presentation)

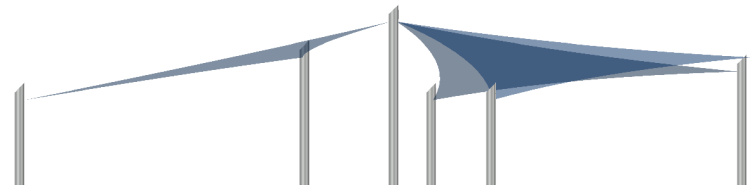
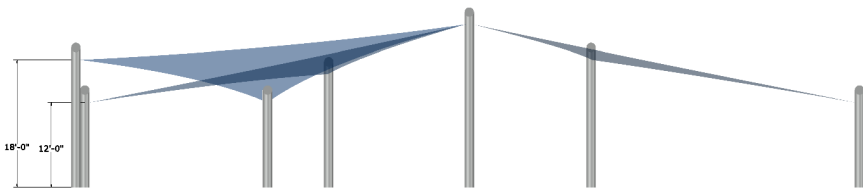
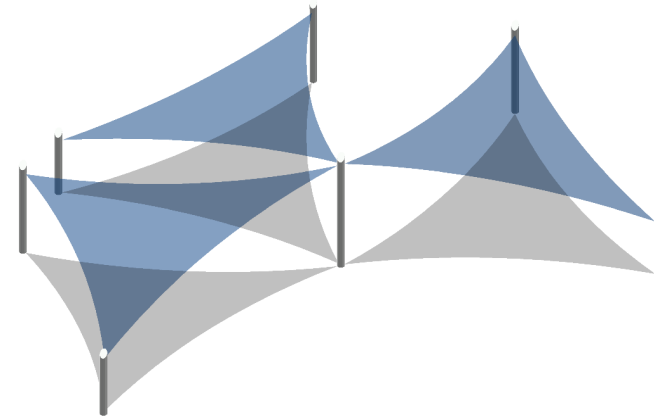
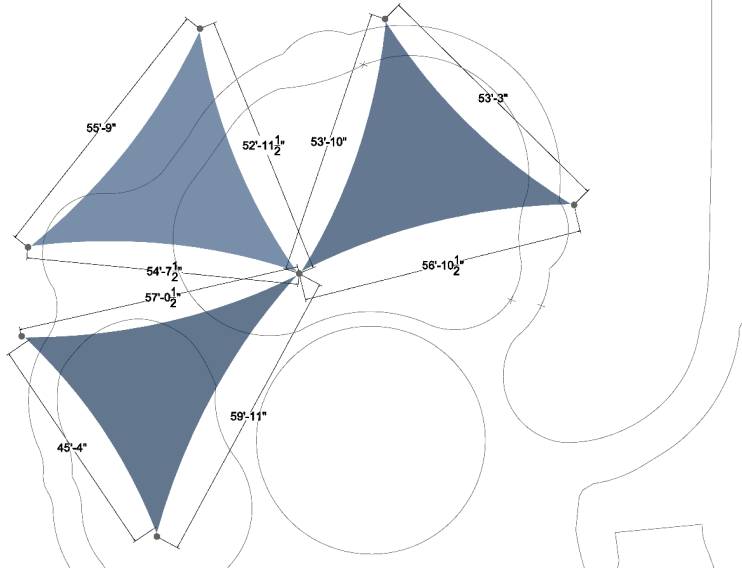
Renderings and Design by Landscape Structures



Nani Falcone Park

Shade Sails at Skate Park (SB – presentation)

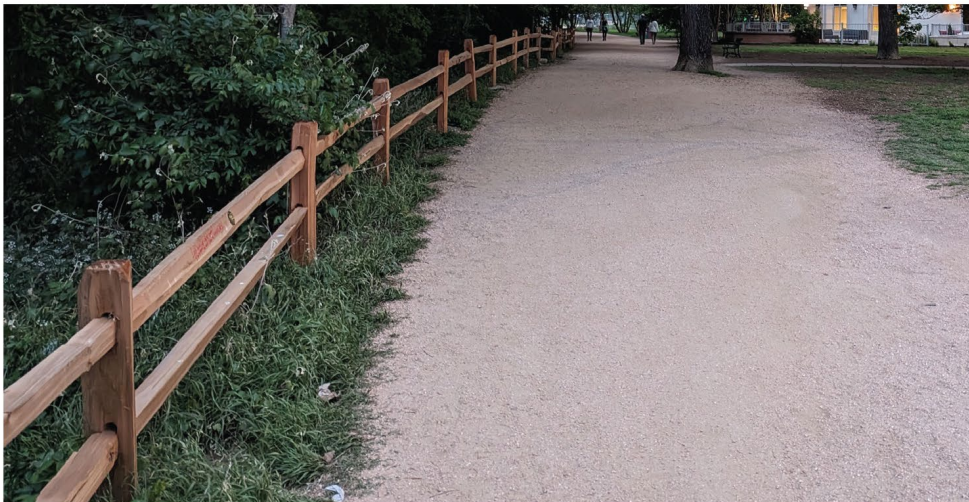
Renderings and Design by Landscape Structures



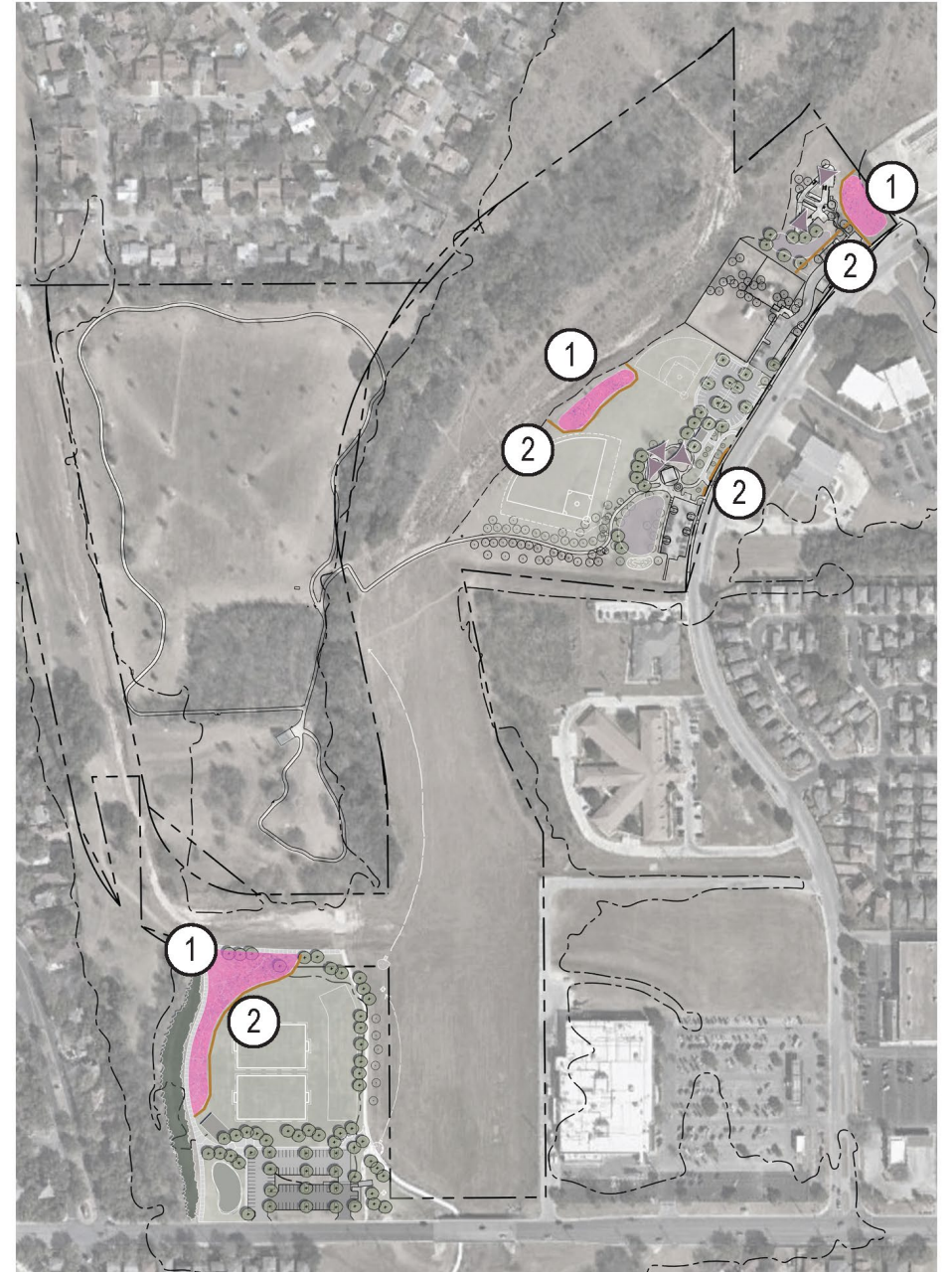
SUB AMENITIES



① Meadows: 3 possible locations include the New Nine Acres, Playground, and Skate Park.



② Split Rail Fencing: 3 possible locations include the New Nine Acres, Playground, and Skate Park. These can be implemented for safety for play areas and denoting no-mow zones from the maintained open lawns.



Nani Falcone Park

Project Schedule

- **CONCEPTUAL PLAN:** September 2024 – December 2024
- **DESIGN:** January 2024 – June 2025
- **BIDDING:** July 2025- August 2025
- **CONSTRUCTION:** Jan 2026 – December 2026



Nani Falcone Park

Questions and Comments

QUESTIONS?

If you desire to be added to an e-mail list for project updates or future meeting announcements, please fill out the sign-in sheet.

Sean Duncan

Landscape Architect – Project Manager

(210)207-2875

Sean.duncan@sanantonio.gov

CONNECT WITH US!



#SA2022Bond | www.sanantonio.gov/2022Bond