

2022-2027

BOND

PROGRAM

City of San Antonio



PUBLIC WORKS

Nani Falcone Park

Public Input Meeting #4

July 1st, 2024 | Presented by Public Works

Agenda

- Welcome and Introductions
- Project Information
- Consultant Presentation
- Public Comments & Questions

2022-2027

BOND

PROGRAM

City of San Antonio



PROPOSED 2022-2027

BOND PROGRAM

City of San Antonio



INFORMATION GUIDE



APPROVED

May 7, 2022

Nani Falcone Park

Project Staff & Design Team

- **Project Design Team:**
 - Studio Balcones: Jennifer Orr, Kat Mays, Allison Bodin
- **COSA Staff:**
 - Tony Forshage – Parks and Rec. Asst. Manager
 - Eric Reyna – Parks and Rec. – PM
 - Jamaal Moreno – Sr. Landscape Architect - PWD
 - Sean Duncan – Landscape Architect- PM -PWD



Nani Falcone Park

Project Background

- **2012-2017 Bond:** Park received \$466,000 for general park improvements & parking expansion.
 - Final scope included a 44,000 square foot dog park, drinking fountain, trash receptacles, bike rack, new entry drive and parking for 13 vehicles and overflow temporary turf parking for 17 vehicles.
- **2017-2022 Bond:** Park received \$250,000 for general park improvements.
 - Final scope included two shade canopies in the dog park with associated accessible walkway, 6 solar powered security lights in the existing parking lots along Mystic Park Drive, and wheel stops installed in the turf parking areas to help maximize parking efficiency.
- Other existing amenities include Disc Golf Course, Pavilion, Educational Overlook, Playground, Skate Plaza, Portable Restrooms, and 1.10 mi Walking Trail.

Nani Falcone Park

Project Scope

- **2022-2027 Bond Program**

- Under Proposition C: Parks, Recreation, and Open Space Improvements funded 82 projects totaling \$271.915 million
- TOTAL Project Funding for Nani Falcone: \$750,000
- Construction funding for desired improvements: \$500,000

Nani Falcone Park

Overall Plan

(SB – presentation)

■ Conceptual Long-Term Plan

Developed from feedback from public meetings
#1 September 5th and #2 November 9th, 2023



Nani Falcone Park - Overall Plan

Nani Falcone Park - Northeast Corner Enlargement

Legend (Proposed Improvements Only)

1. Additional Parking w/ Drop-Off
2. Meadow - No Mow Zone
3. Shade Sail
4. Connection to existing conc. sidewalk
5. Connection to existing parking lot
6. Future Restroom
7. Play Area
(Trike Track, Nature Play, Splash Pad)
8. Youth Ball Field
9. Dog Park Updates
(Re-mulch area, Agility course, Shade Sail, Water spout)
10. Upgrade traffic calming devices recommended
(Speed bump or traffic light)
11. Children's Pump Track
12. Open Lawn



Nani Falcone Park - South Enlargement

Legend (Proposed Improvements Only)

- | | |
|------------------------------|---|
| 13. Future Sport Courts Area | 20. Covered Pavilion |
| 14. Disc Golf Putting Area | 21. Youth Soccer Field |
| 15. Disc Golf - Tee #1 | 22. Reforestation Edge of Park |
| 16. Disc Golf - Hole #1 | 23. Meadow - No Mow Zone
(w/ gravel paths) |
| 17. Disc Golf - Tee #2 | 24. Pollinator Garden / Fruiting Trees |
| 18. Disc Golf - Hole #2 | |
| 19. Looped Trail (.34 miles) | |



CONTEXT MAP

- Meeting #3 – March 6, 2024
 - Expanded parking lot layout options reviewed & discussed



PRESENTED PARKING LOT OPTIONS

CONTEXT MAP



A.1 - PARKING LOT - OPTION 1



A.2 - PARKING LOT - OPTION 2



CHOSEN PARKING LOT SCHEME



BASED ON COMMUNITY INPUT, THE NEW PARKING LOT WILL:

- CONNECT TO THE CURRENT DOG PARK ADJACENT LOT
- SERVE AS A CENTRAL HUB FOR NANI FALCONE, LINKING THE DOG PARK & SKATE PARK AREA TO THE PLAYGROUND & DISC GOLF COURSE.
- PROVIDE A SAFE PATHWAY AND SPACE FOR FUTURE RESTROOM FACILITIES DESIRED BY THE COMMUNITY
- PARKING LOT MATERIALS WILL BE CONSISTENT WITH WHAT IS ALREADY PRESENT ON-SITE

LEGEND

- ① CONNECTION FROM EXISTING PARKING
- ② GRAVEL PARKING STALL
- ③ PEDESTRIAN CONNECTION FROM NORTH
- ④ ENTRY PLAZA / SHADED DROP-OFF
- ⑤ FUTURE RESTROOM
- ⑥ EXISTING SIDEWALK

Nani Falcone Park

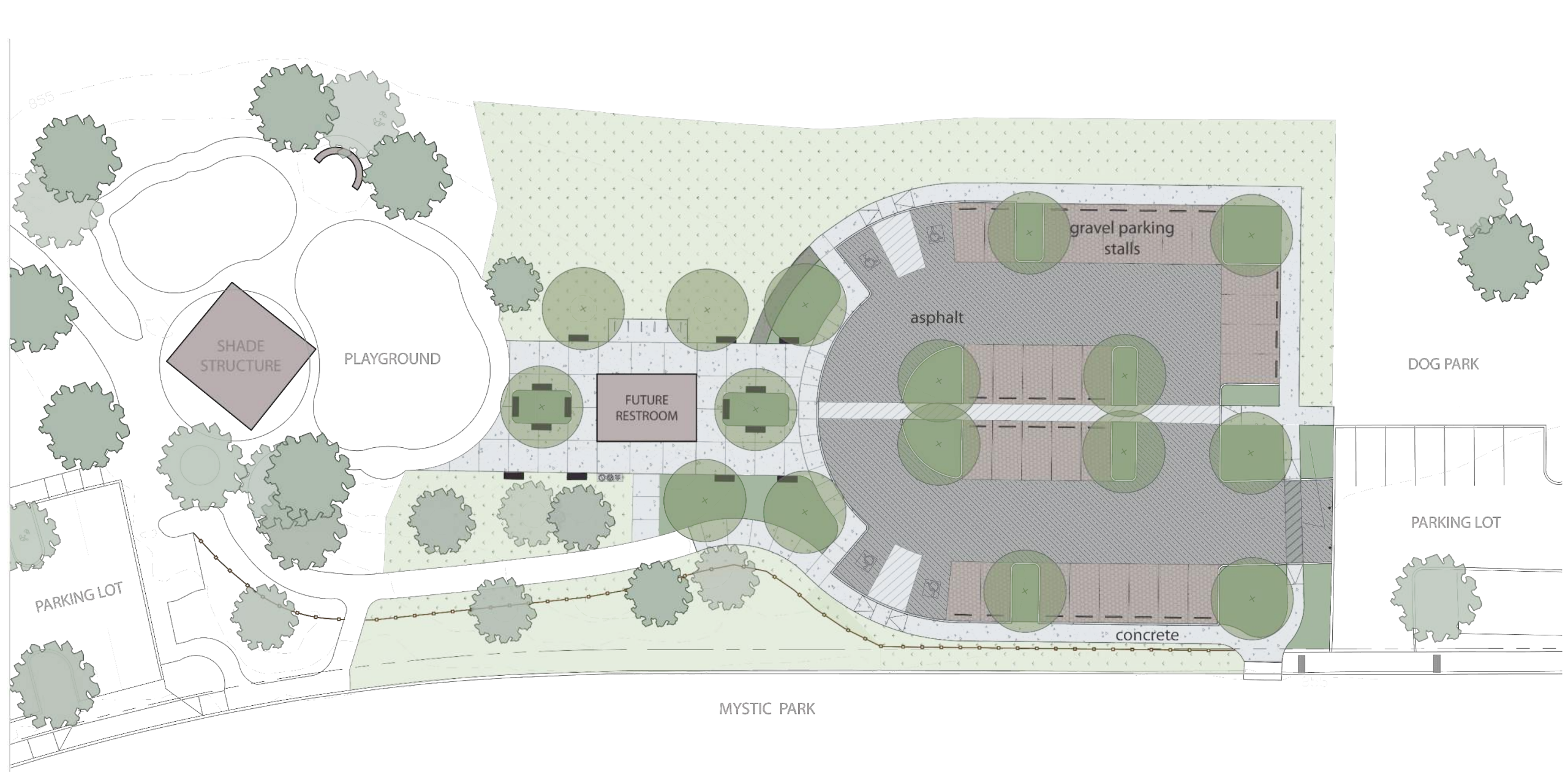
Project Scope

- **Meeting #4**

- Studio Balcones to share Construction Documents & Budget to date for Expanded Parking along Mystic Park

- **2022-2027 Bond Program**

- Construction Cost Funding for Nani Falcone Improvements: \$500,000



855

SHADE
STRUCTURE

PLAYGROUND

FUTURE
RESTROOM

asphalt

gravel parking
stalls

DOG PARK

PARKING LOT

PARKING LOT

concrete

MYSTIC PARK

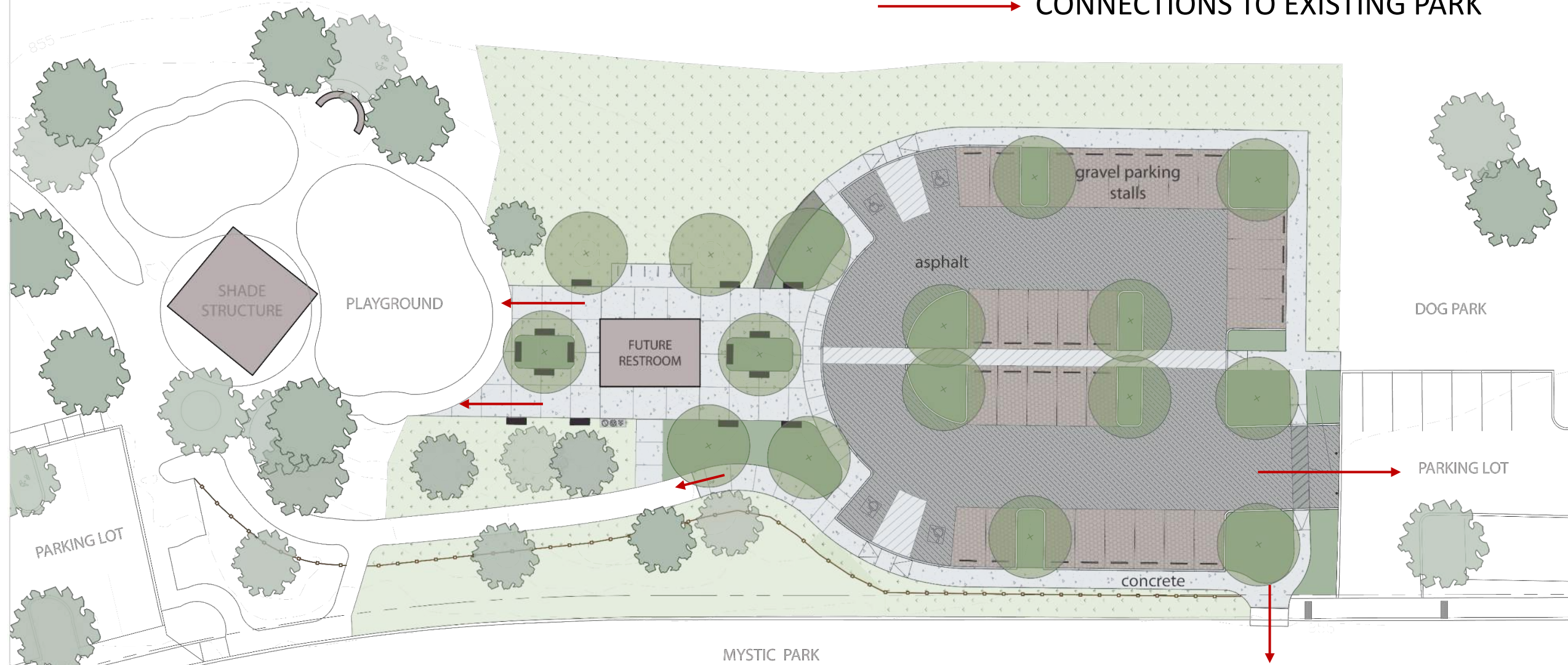
245



Nani Falcome Park
Bond Improvements - July 20204



→ CONNECTIONS TO EXISTING PARK

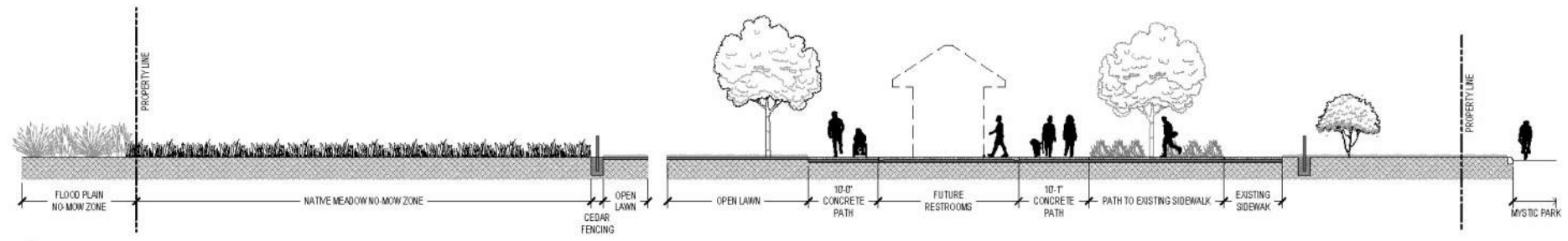
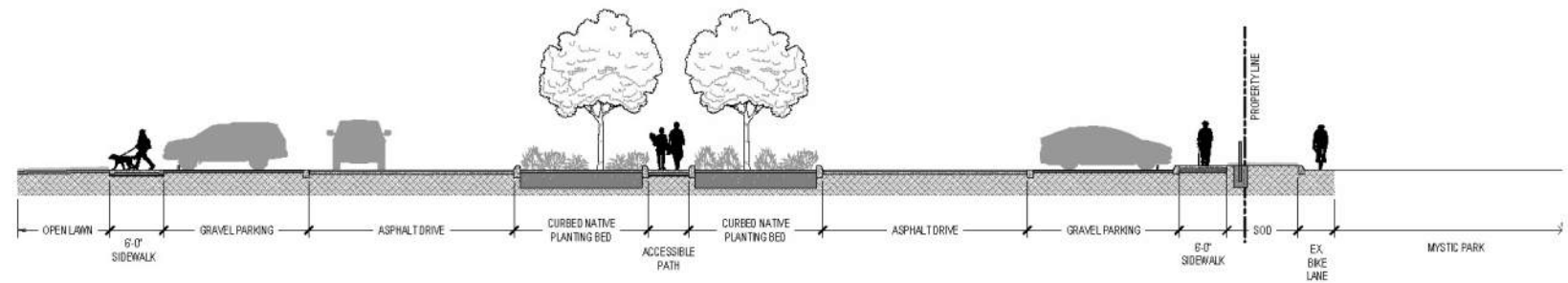
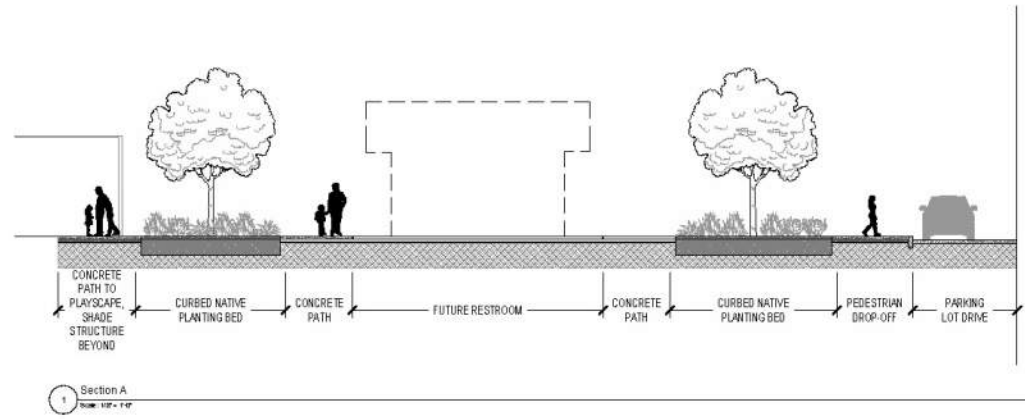


NOT FOR
CONSTRUCTION

NANI FALCONE PARK
 8716 MYSTIC PARK
 SAN ANTONIO, TX 78254



1 KEY MAP
 SCALE: 1"=50'



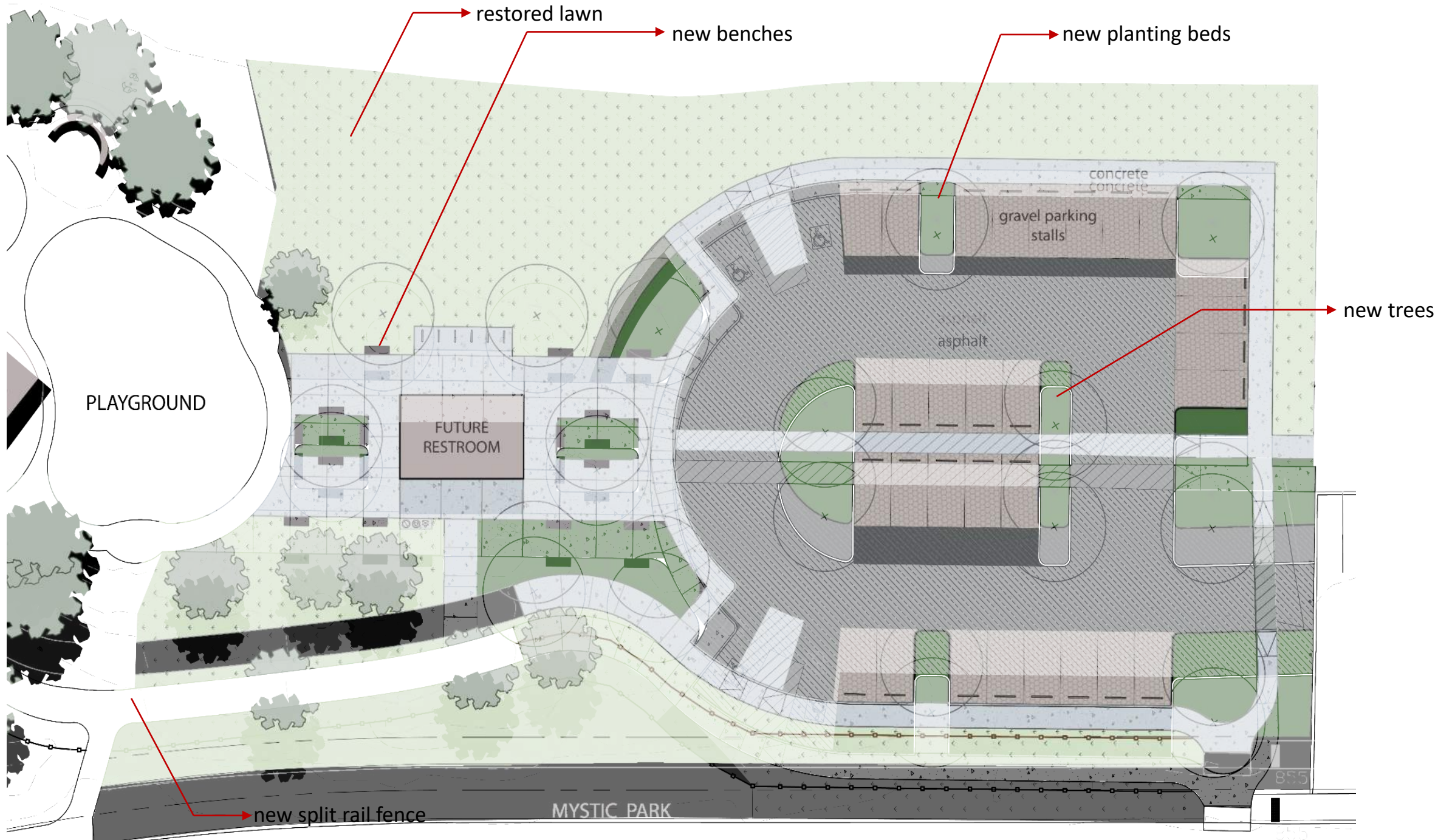
These drawings and all copyright therein are the sole and exclusive property of Studio Balcones Landscape Architecture & Urban Design. Reproduction or use of this drawing in whole or in part by any means in any way whatsoever without the prior written consent of Studio Balcones Landscape Architecture & Urban Design is strictly prohibited.

Copyright © 2024 Studio Balcones Landscape Architecture & Urban Design

ISSUED SETS:

Description	Date Issued
100% DD SET	JUNE 12, 2024

Project No: 2207



restored lawn

new benches

new planting beds

PLAYGROUND

FUTURE
RESTROOM

gravel parking
stalls

asphalt

concrete
concrete

new trees

new split rail fence

MYSTIC PARK

85.5

TREE PALETTE

Canopy Trees



Cedar Elm



Monterey Oak



Chinkpain Oak



Texas Ash



Mexican Sycamores



Live Oak

Understory Trees Spring Bloom



Mexican Plum



Texas Mt. Laurel



Anacacho Orchid

Understory Trees Summer Interest



Texas Persimon



Desert Willow

Understory Trees Fall/Winter Interest



Mexican Buckeye



Possum Haw Holly

PLANTING PALETTE

GREEN STRUCTURE



Yellow Red Yucca



Texas Sotol



Prickly Pear



Twingleaf Yucca



Texas Kidneywood

GRASSY TEXTURE



Indian Grass



Switchgrass - Shenandoah



Side Oats Grama

SPRING



Agarita



Four Nerve Daisy



Black Eyed Susan 'Maxima'

SUMMER



Zexmenia



Flame Acanthus



Skeleton-leaf Goldeneye

FALL



Flame Leaf Sumac



Mexican Mint Marigold



Mistflower

POSSIBLE ADDITIONAL ELEMENTS

(as budget allows)



1 Relocated Ball Field



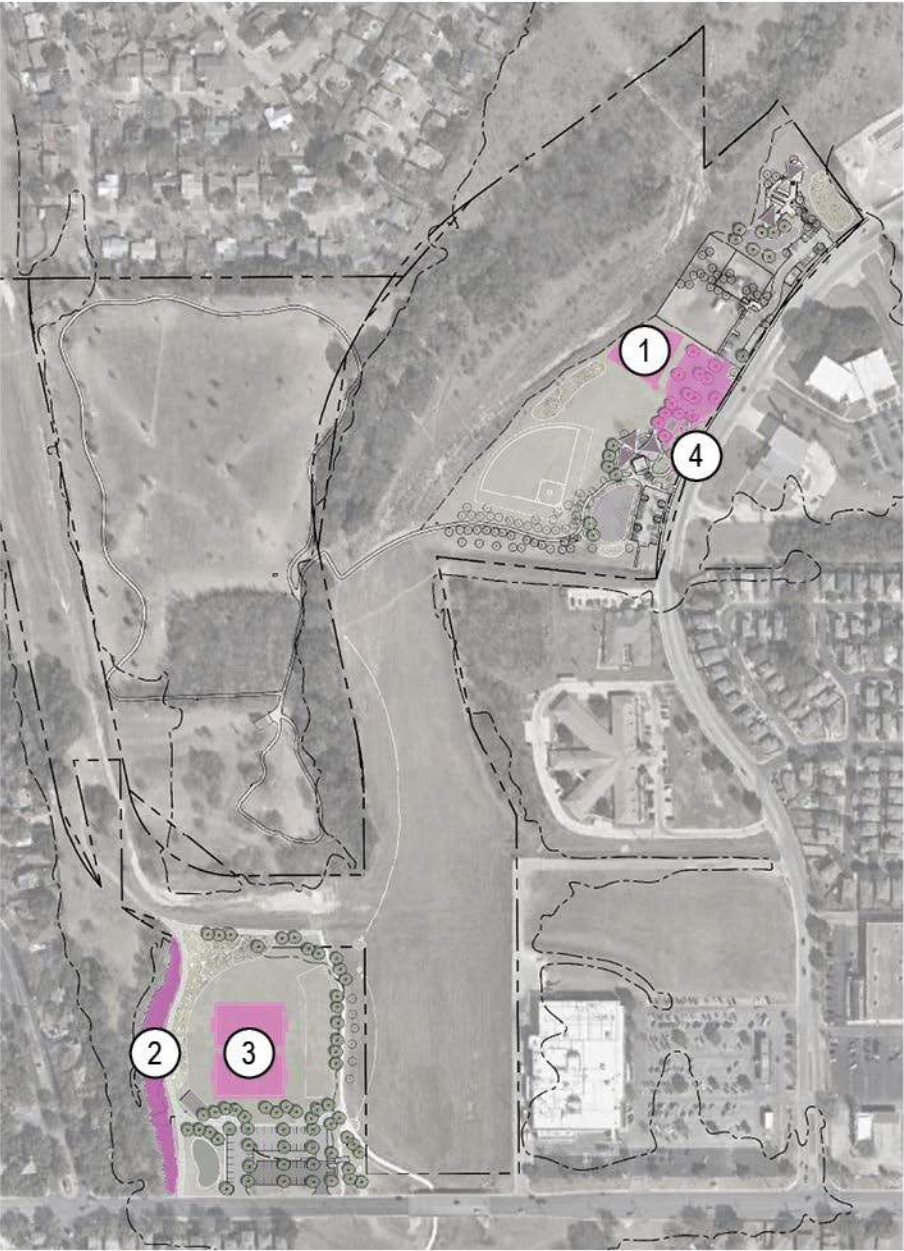
2 Reforestation at new 9 acres



3 Pickup Soccer Fields at new 9 acres



4 Split Rail Fencing between Existing Playground & Mystic Park





Nani Falcone Park

Project Schedule

- **CONCEPTUAL PLAN:** Sept 2024 – Dec 2024
- **DESIGN:** January 2024 – August 2024
- **BIDDING:** FALL 2024
- **CONSTRUCTION:** Starts Jan 2025



Nani Falcone Park

Questions and Comments

QUESTIONS?

If you desire to be added to an e-mail list for project updates or future meeting announcements, please fill out the sign-in sheet.

Sean Duncan

Landscape Architect – Project Manager

(210)207-2875

Sean.duncan@sanantonio.gov

CONNECT WITH US!    

#SA2022Bond | www.sanantonio.gov/2022Bond