

Long Creek Greenway & Stream Enhancement

Treyburn Drive to Oakdale Road

Public Information Session: March 25, 2021



Mecklenburg County
Park and Recreation



Getting to know Zoom



Zoom Meeting | You are viewing Park & Rec's screen | View Options

Participants: You, Park & Rec, Your Neighbor, The Consultant, Elected Official, Another Neighbor

Participants (8)

Find a participant

- You
- Park & Rec
- Your Neighbor
- The Consultant
- Elected Official
- Another Neighbor

Invite | Unmute Me | ...

Chat

To: Everyone

Type message here...

Unmute | Start Video | Participants (8) | Chat | Share Screen | Record | Reactions | Leave

Stay muted! Video optional.

Red line through microphone = muted | Red line through video = off

Unmute | Start Video

Ask questions and add comments to the chat throughout the meeting!

Project Team



Mecklenburg County
Park and Recreation

The logo for LandDesign, consisting of a white square with a thick white border.

LandDesign
CREATING PLACES
THAT MATTER.

Landscape Architecture
and Civil Engineering

The logo for neighboring concepts, with "neighboring" in grey and "concepts" in green.

neighboring
concepts

Architecture



Stream Restoration



Geotechnical Engineering



Structural Engineering



Surveying

Long Creek Fun Facts



Mecklenburg County
Park and Recreation



- Long Creek flows through west and northwest Mecklenburg County
 - 55 miles of perennial streams in its creekshed
 - Stretches from Northlake Mall/I-77 to US National Whitewater Center/Catawba River
- Long Creek is named after Captain John Long,
 - defended the Charlotte area against British invaders during the Revolutionary War
 - died July 4, 1799, at age 55
- The Long Creek watershed has multiple historic sites:
 - Alexandriana Historic Site
 - Homesite of John McKnitt Alexander, secretary of the committee that drew up the Mecklenburg Declaration of Independence (Meck Dec)
 - Long Creek Mill Ruins →
 - Located near the proposed Beatties Ford Road Trailhead

Source: KeepingWatch.org



Greenways Overview



Mecklenburg County
Park and Recreation



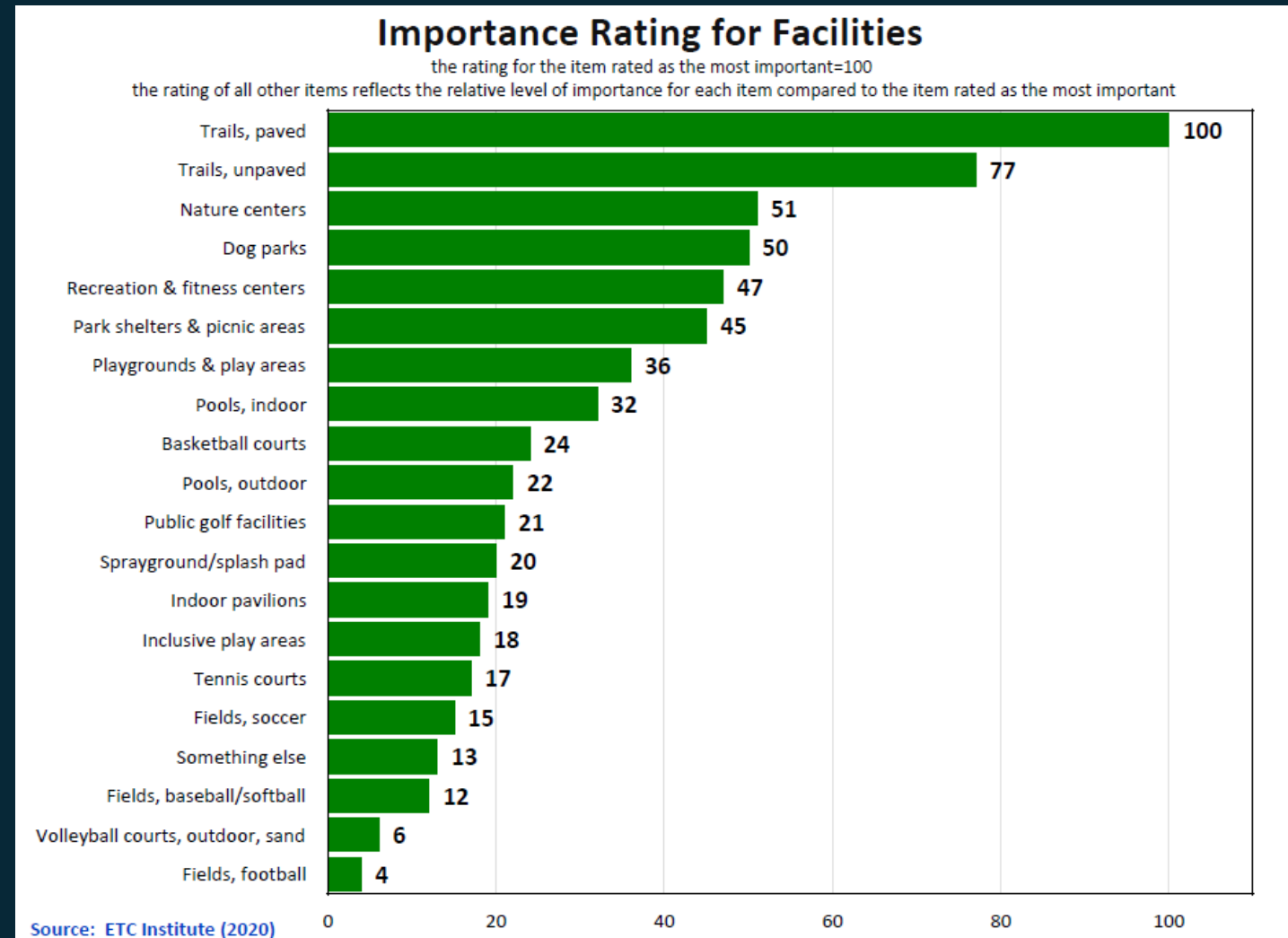
- Vegetated natural buffers that help protect water quality, reduce the impacts of flooding and provide wildlife habitat.
- Linear parks that connect people and places
- Trails that provide recreation, transportation, fitness and economic benefits for all to enjoy.
- Promote diversity, health, quality of life, good business and stretch our tax dollars.

Little Sugar Creek Greenway

Greenways Overview



- In 1966, the Charlotte-Mecklenburg Master Plan for recreation recommended greenways “as logical natural elements useful in creating a sense of physical form and order within the city.”
- **#1 Amenity** requested by the residents today
- Greenway Master Plan includes 308 miles of greenway trails and 200+ miles of urban trails



Accelerated Greenway Plan



Mecklenburg County
Park and Recreation



- Accelerated plan is to complete 30 new miles of greenway between 2019 - 2023

Miles	Greenway Development Status
56.5	Existing/Developed
9.3	Funded – In Construction (Includes City + Town projects)
28.9	Funded – In Design
3.8	Funded – By Others
~98	Total Greenway Miles funded through FY2023



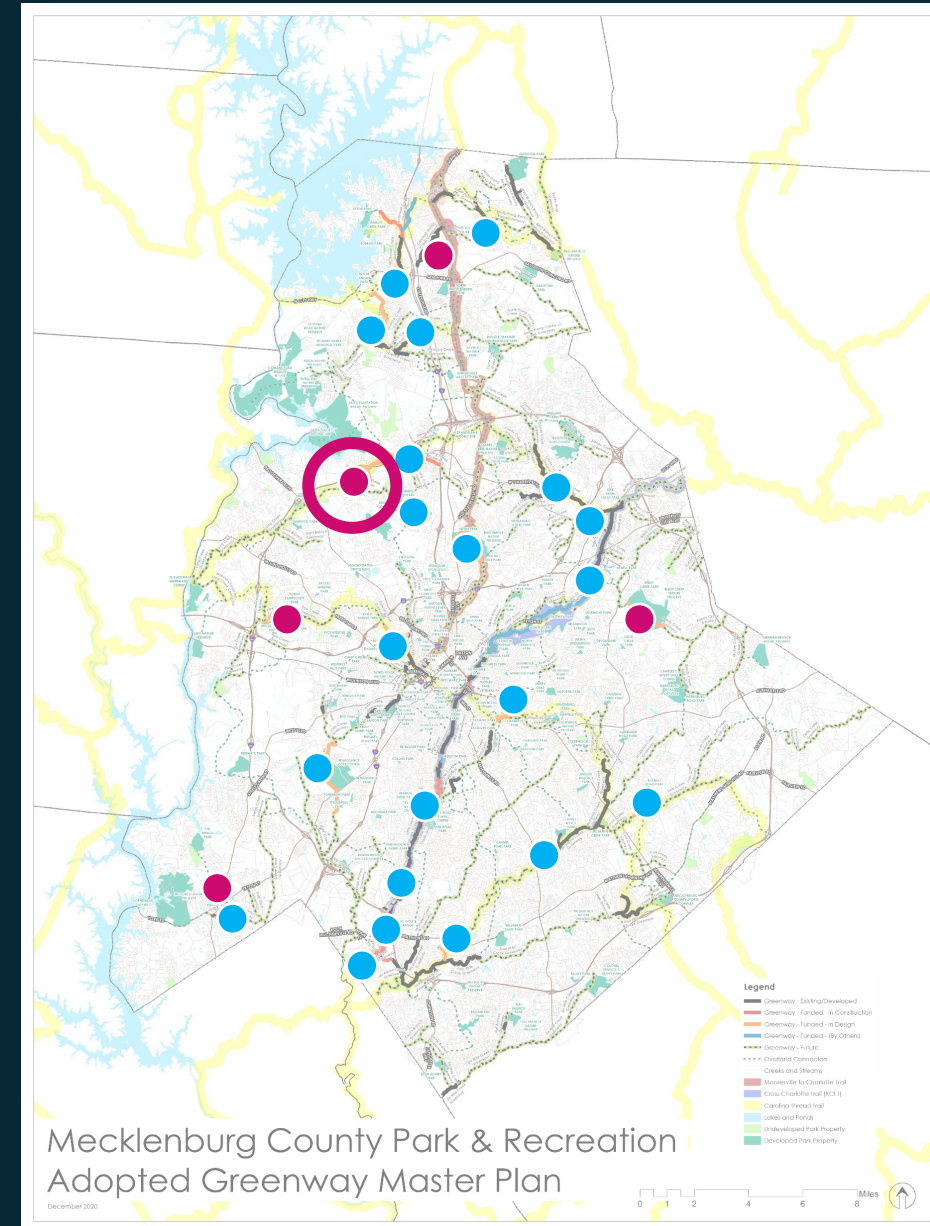
Greenway Project Locations



Mecklenburg County
Park and Recreation



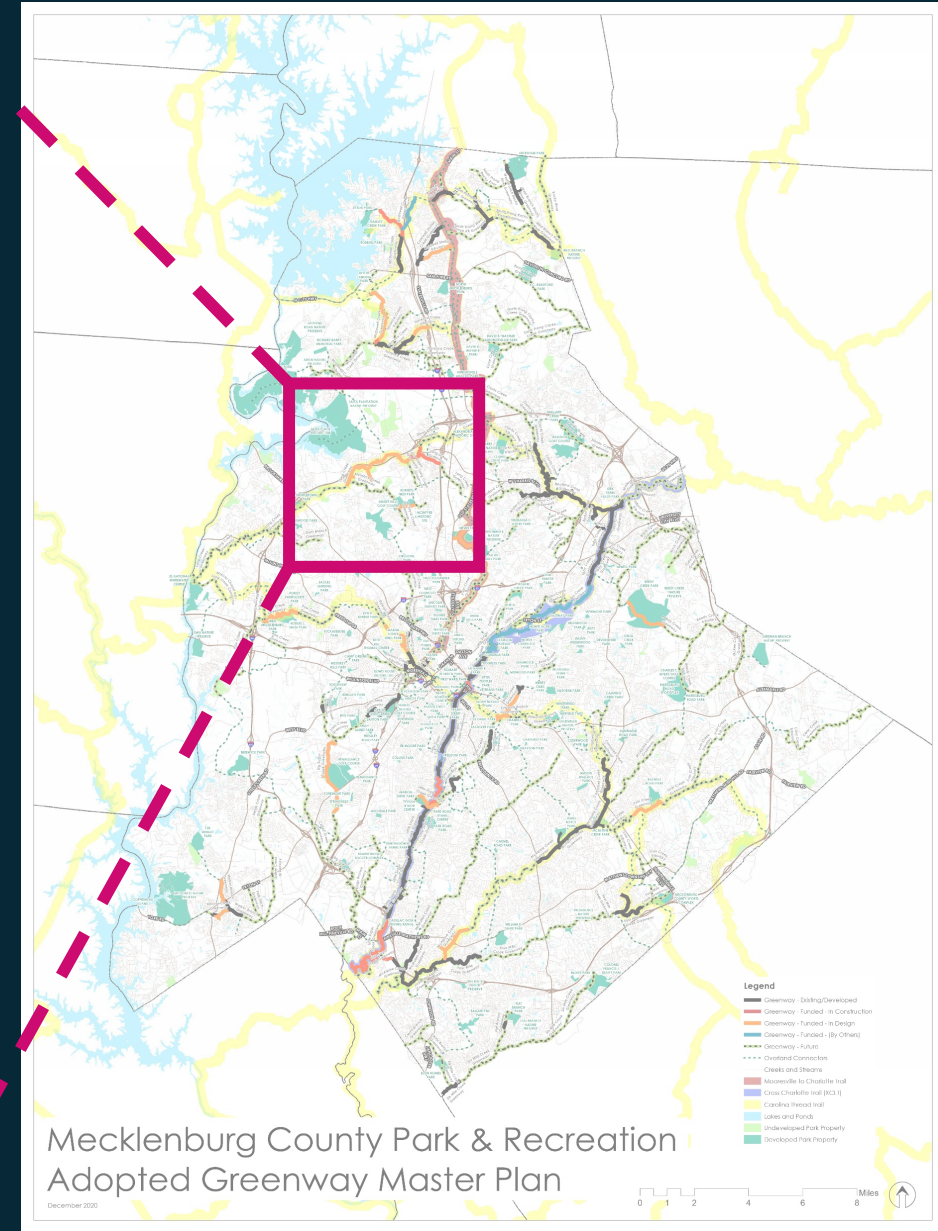
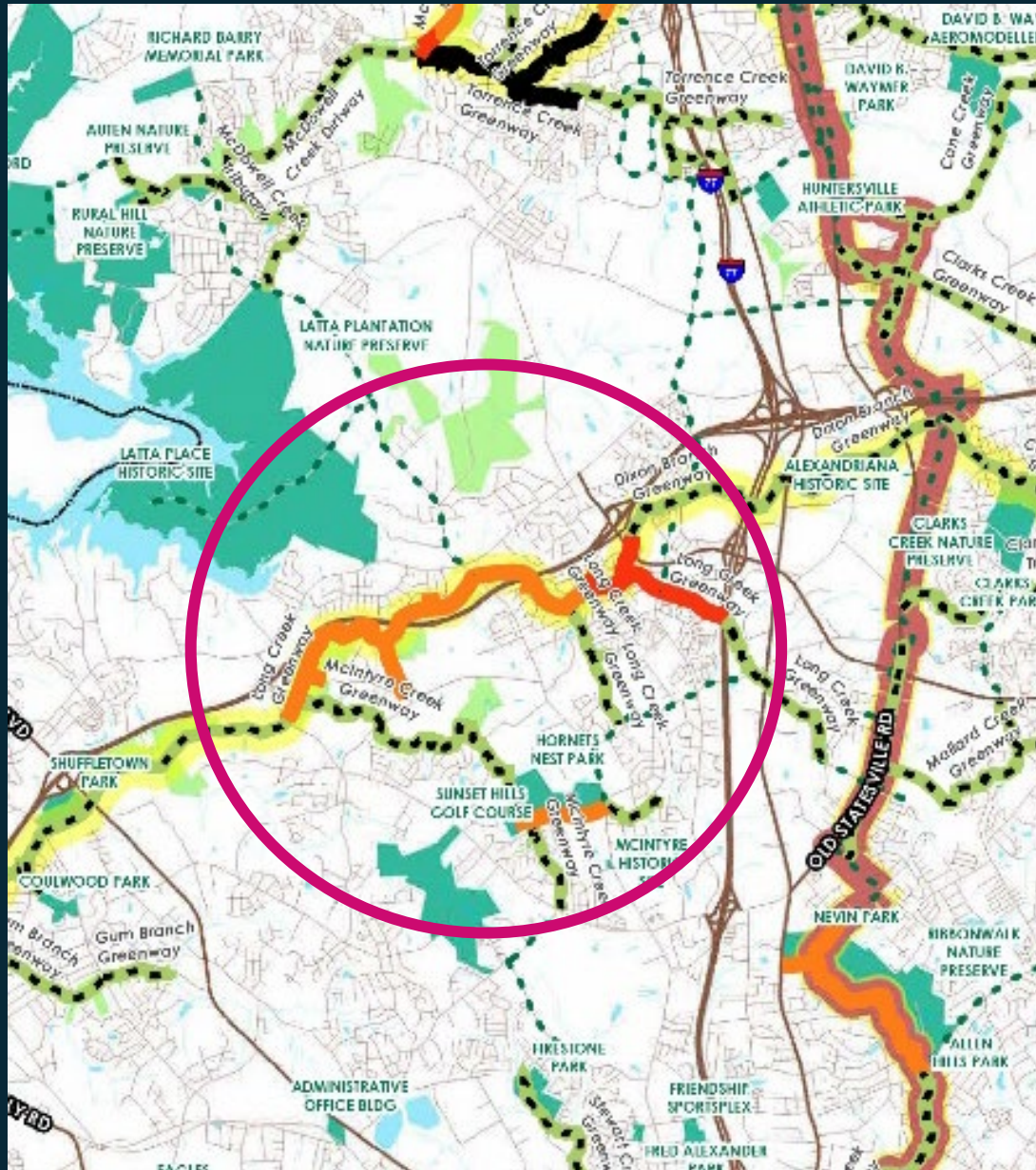
- CIP Funded Projects
- Accelerated Greenway Projects



Long Creek Greenway



Mecklenburg County
Park and Recreation



Mecklenburg County Park & Recreation
Adopted Greenway Master Plan

December 2020



Long Creek Greenway



Mecklenburg County
Park and Recreation



LONG CREEK GREENWAY *is coming soon!*

I-77 to Treyburn Drive Section
Summer 2020 - Early 2022

Questions?

Call: 980-314-1000

Visit: ParkandRec.com

Or Email: PRK-Planners@mecklenburgcountync.gov

Mecklenburg County is beginning construction on the first segment of Long Creek Greenway. This project will create 2+ miles of new greenway trail, from I-77 to Treyburn Drive, with connections to Bayview Py, Secretariat Dr, Reames Rd, W.T. Harris Blvd, Northlake West Dr, Julia Lee Ct, and Roundstone Way. The next phase of the project is in design and will extend the greenway trail to Oakdale Road.

This project is a combined stream restoration and greenway construction project. The stream enhancements to Long Creek will reduce erosion and improve water quality.

This greenway trail is also part of the Carolina Thread Trail:
<https://www.carolinathreadtrail.org/>

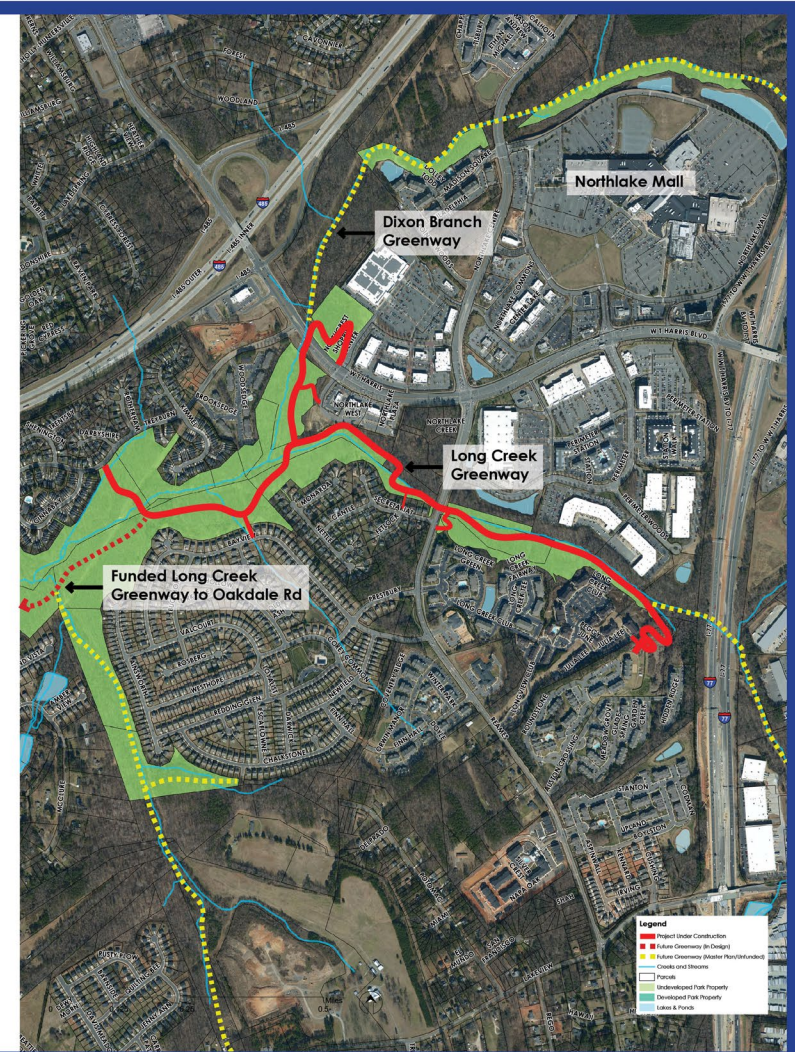


General Contractor: **Eagle Wood, Inc**
Denver, NC

LandDesign.
CREATING PLACES
THAT MATTER.



Mecklenburg County
Park and Recreation
www.parkandrec.com



Project Schedule



Mecklenburg County
Park and Recreation

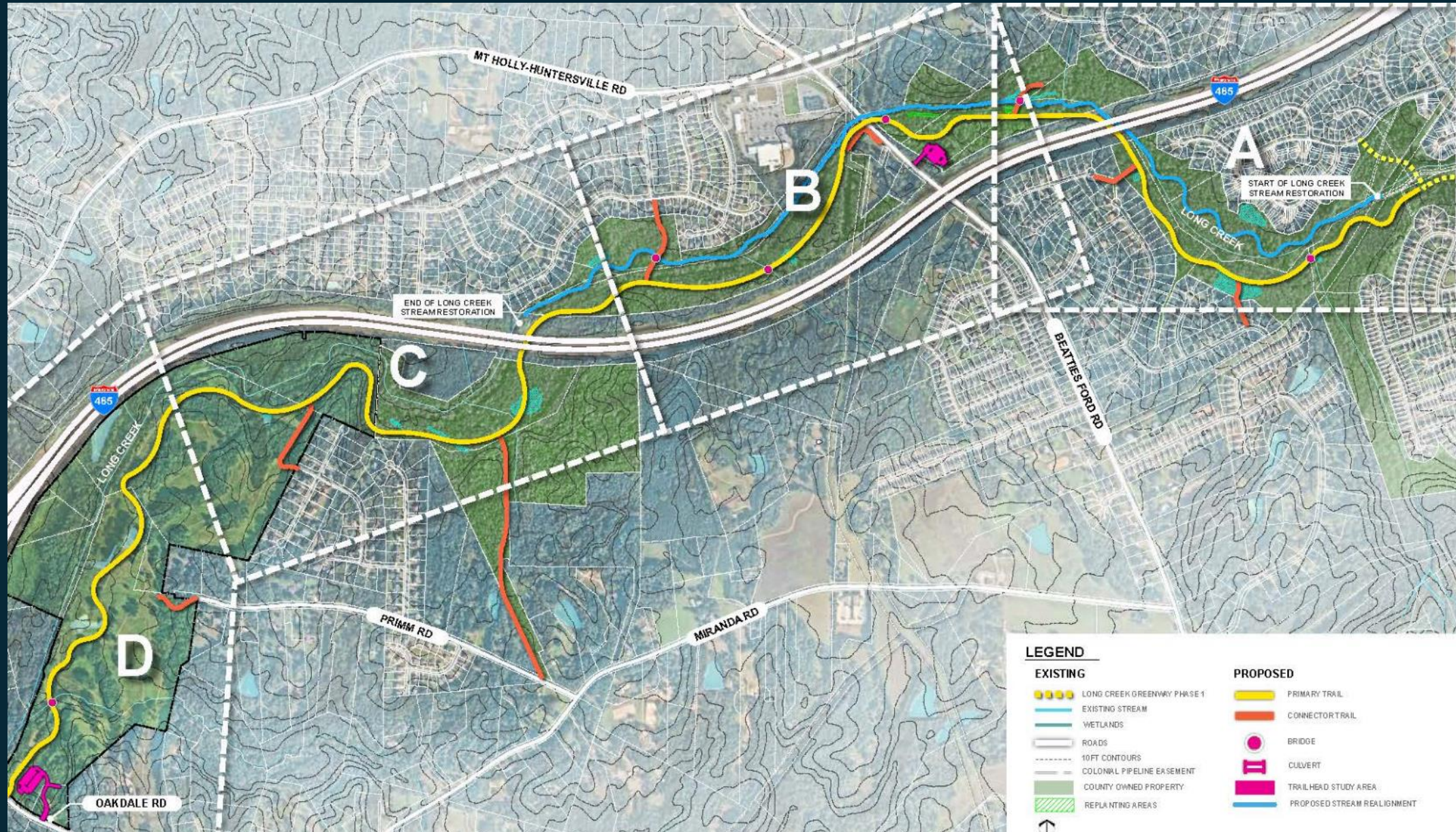


- **Long Creek Greenway Phase 1**
 - Construction began Fall 2020
 - Completion: ~Spring/Summer 2022
- **Long Creek Greenway Phase 2**
 - Construction Start: ~Early 2022
 - Completion: ~Late 2023

Overview Map



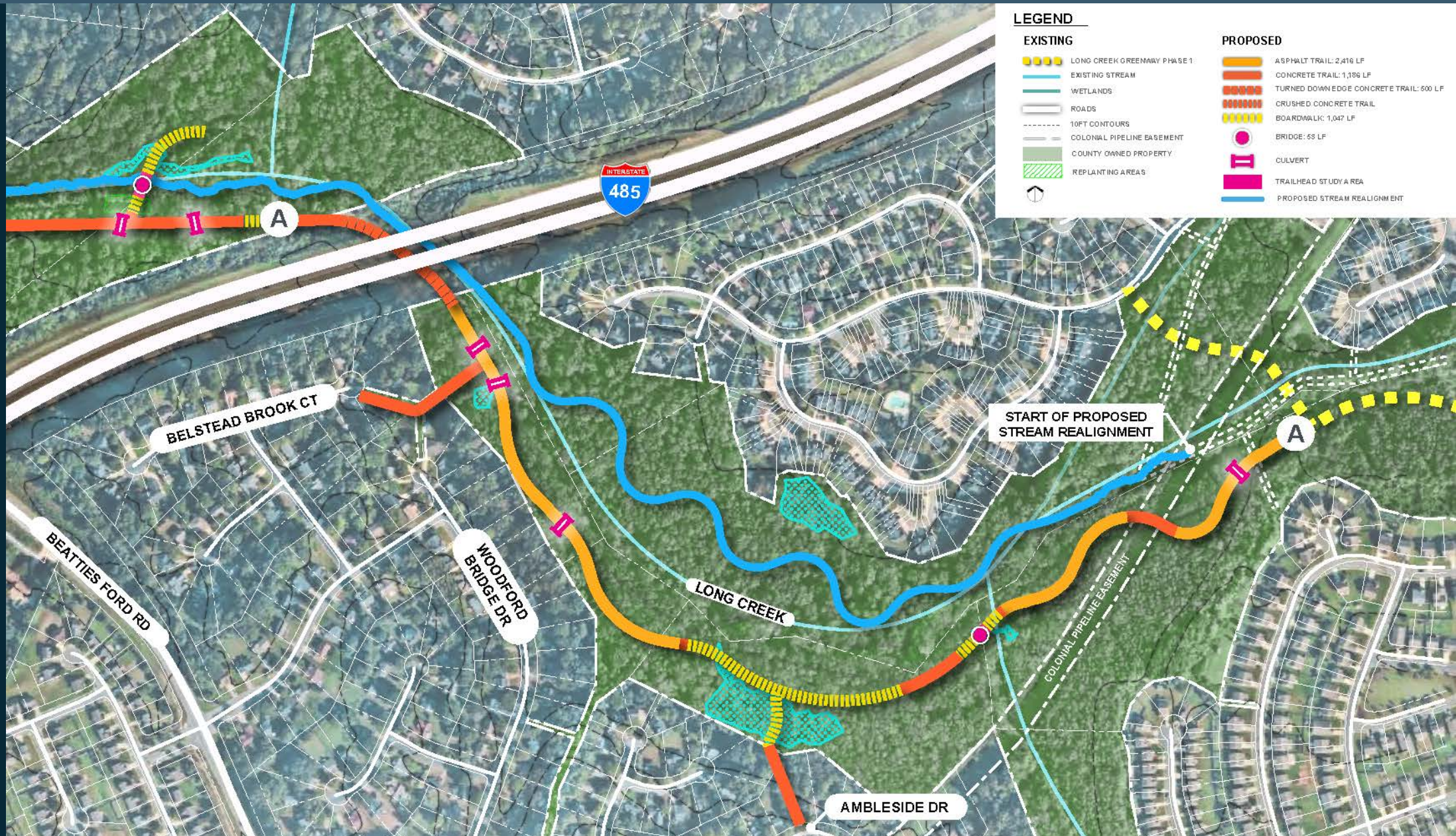
Mecklenburg County
Park and Recreation



Enlargement A



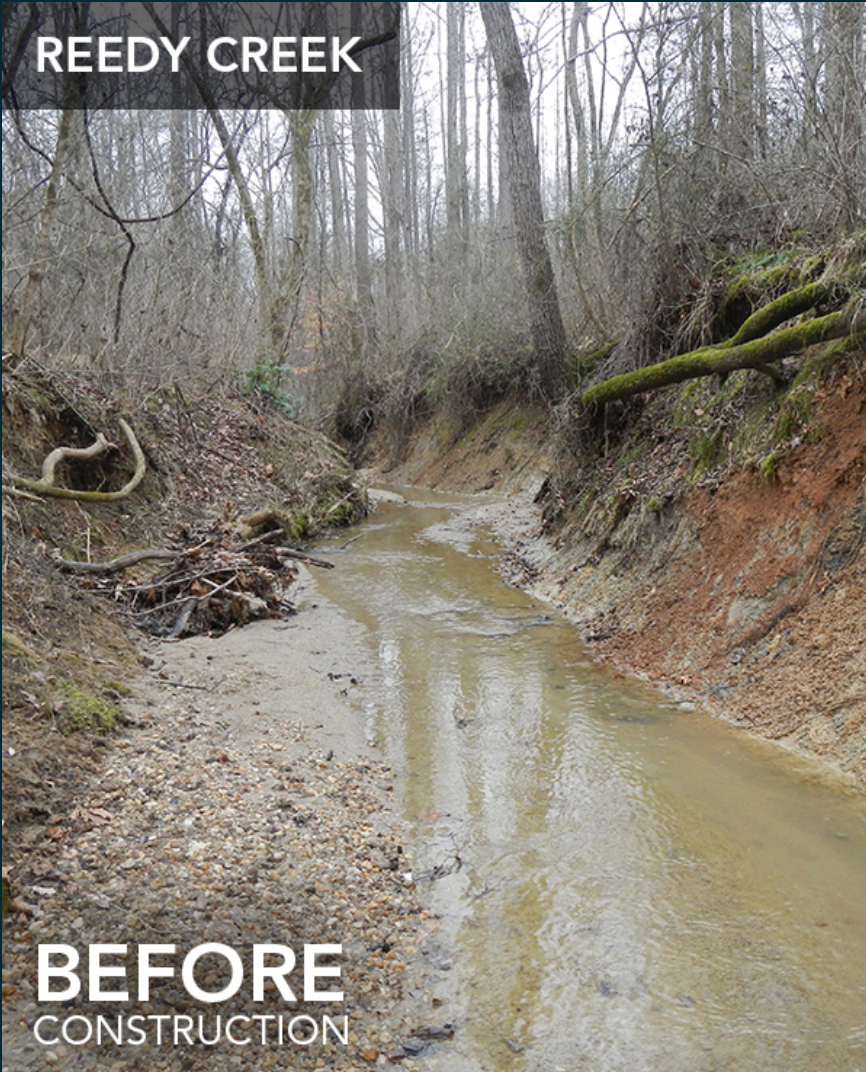
Mecklenburg County
Park and Recreation



Enlargement A



Mecklenburg County
Park and Recreation



Enlargement B



Mecklenburg County
Park and Recreation



LEGEND	
EXISTING	PROPOSED
LONG CREEK GREENWAY PHASE 1	ASPHALT TRAIL: 2,880 LF
EXISTING STREAM	CONCRETE TRAIL: 1,265.52 LF
WETLANDS	TURNED DOWN EDGE CONCRETE TRAIL: 536 LF
ROADS	CRUSHED CONCRETE TRAIL
10FT CONTOURS	BOARDWALK: 1,409 LF
COLONIAL PIPELINE EASEMENT	BRIDGE: 207 LF
COUNTY OWNED PROPERTY	CULVERT
REPLANTING AREAS	TRAILHEAD STUDY AREA
	PROPOSED STREAM REALIGNMENT

Enlargement B



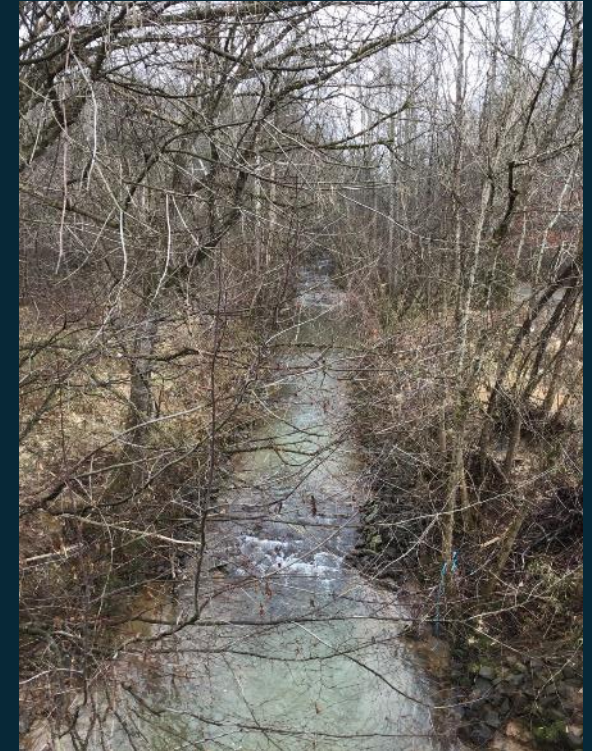
Mecklenburg County
Park and Recreation



Historic Mill Ruins

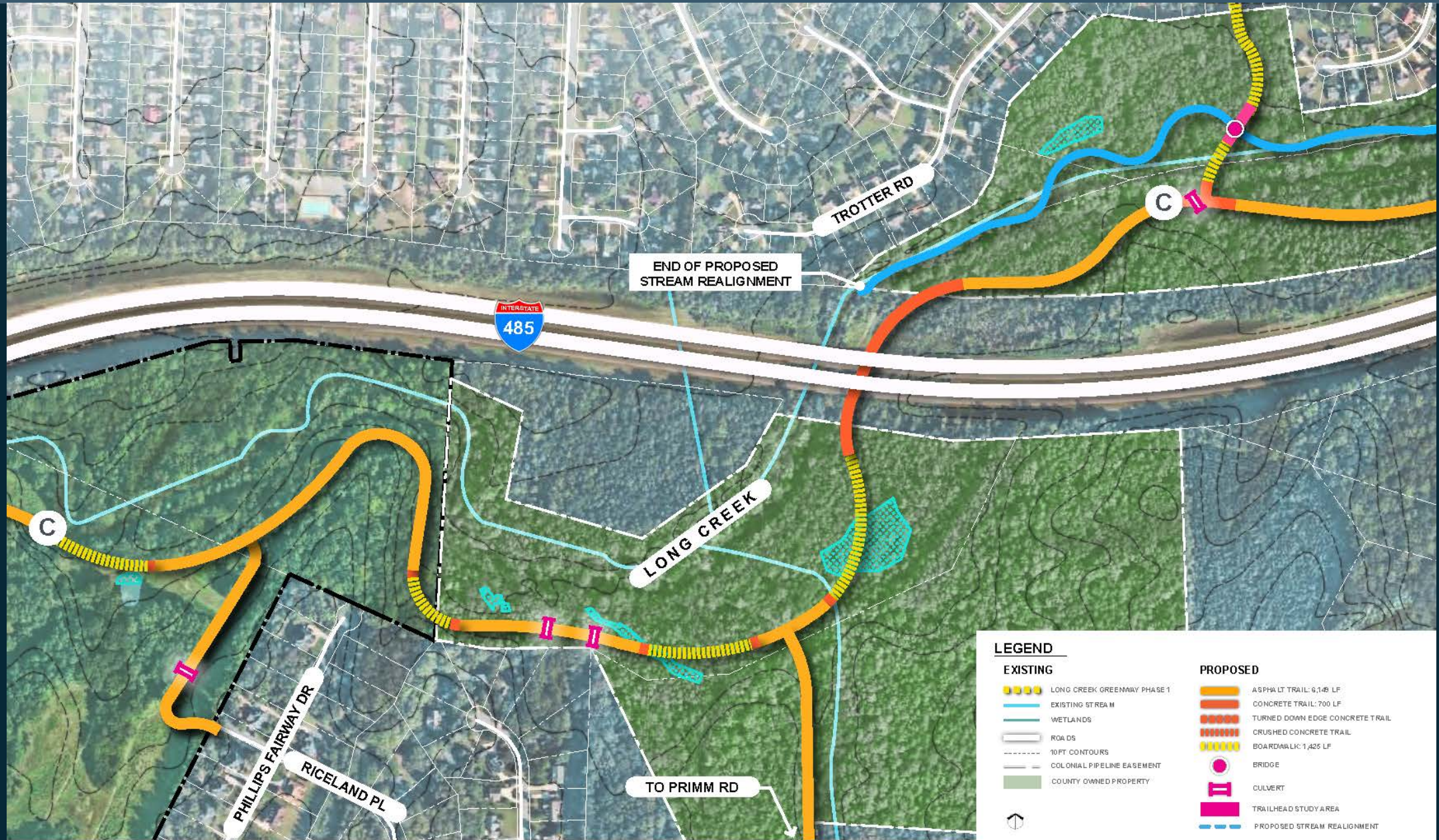


Beatties Ford Rd Connection



Long Creek

Enlargement C



Enlargement C



Mecklenburg County
Park and Recreation



Future greenway alignment

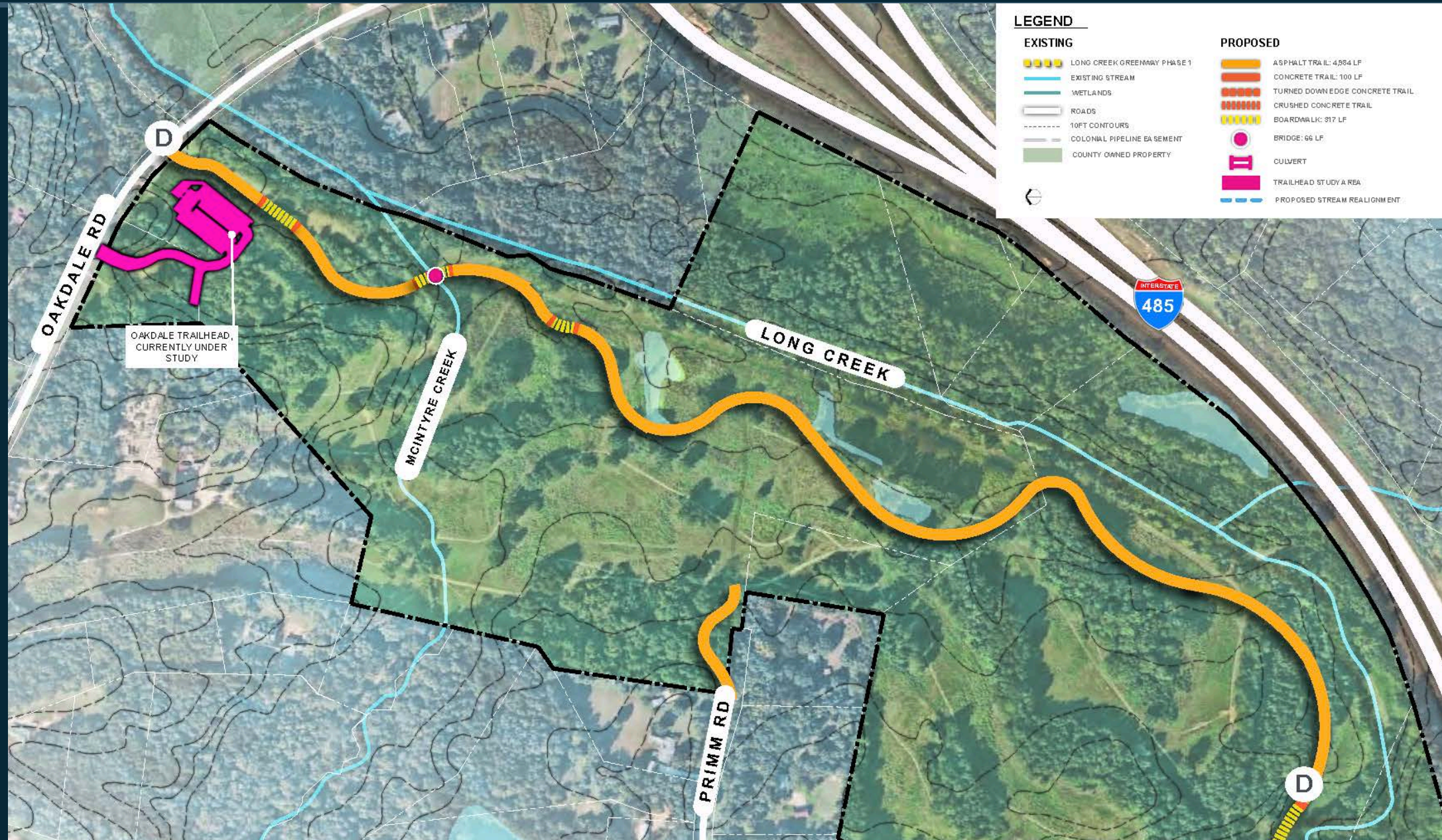


Western I-485
underpass



Large Rock Outcrop

Enlargement D



LEGEND

EXISTING

- LONG CREEK GREENWAY PHASE 1
- EXISTING STREAM
- WETLANDS
- ROADS
- 10FT CONTOURS
- COLONIAL PIPELINE EASEMENT
- COUNTY OWNED PROPERTY

PROPOSED

- ASPHALT TRAIL: 4,594 LF
- CONCRETE TRAIL: 100 LF
- TURNED DOWN EDGE CONCRETE TRAIL
- CRUSHED CONCRETE TRAIL
- BOARDWALK: 317 LF
- BRIDGE: 66 LF
- CULVERT
- TRAILHEAD STUDY AREA
- PROPOSED STREAM REALIGNMENT

Enlargement D



Mecklenburg County
Park and Recreation



Oakdale Road



Oak Hill's Golf Course



Oak Hill's Ponds

Example Trailhead



Mecklenburg County
Park and Recreation



Typical elements found @ trailheads may include:

- Parking
- Restroom
- Drinking Fountain
- Maintenance Outpost



Photo of Little Sugar Creek Greenway (Sharon Road West)



Photo of McAlpine Creek Greenway Parking and Rest Area (Johnston Road)



Little Sugar Creek Greenway (Tyvola Road to Huntingtowne Farms Park)

Example Bridge



Mecklenburg County
Park and Recreation



Photo from
Little Sugar
Creek Greenway

Example Greenway Underpass



Mecklenburg County
Park and Recreation



Photo from Little
Sugar Creek
Greenway at
Archdale Road

Example Boardwalk

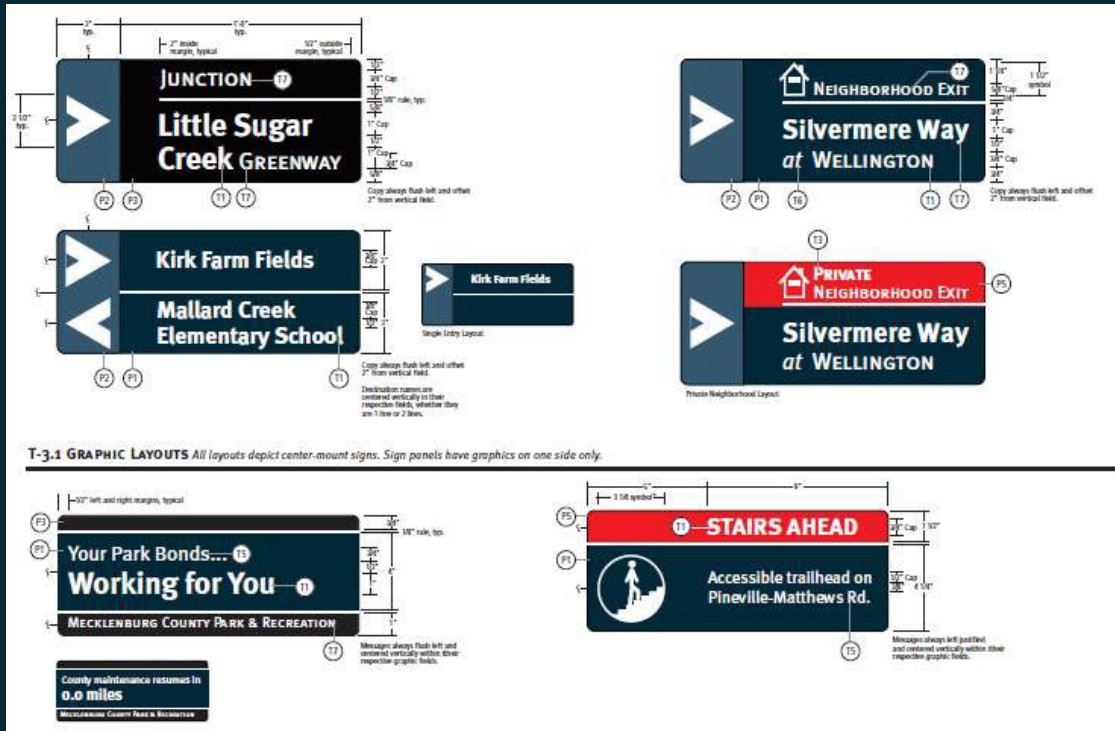


Mecklenburg County
Park and Recreation



Photo from
Toby Creek
Greenway

Example Signage



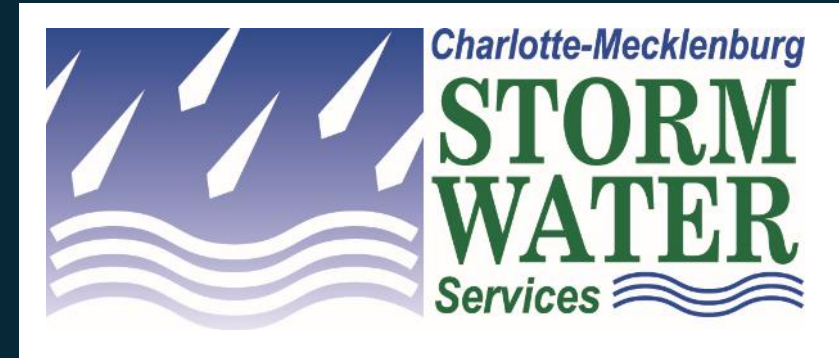
Stream Enhancement



Mecklenburg County
Park and Recreation



- Charlotte-Mecklenburg Storm Water Services will work to improve the stream bed and banks along Long Creek



Stream Enhancement



Mecklenburg County
Park and Recreation



Current Photos of Long Creek



Stream Enhancement: Example at a Similar Site



Mecklenburg County
Park and Recreation



Stream Enhancement: Proposed Long Creek



Mecklenburg County
Park and Recreation



BENCH



**NEW
TREES**



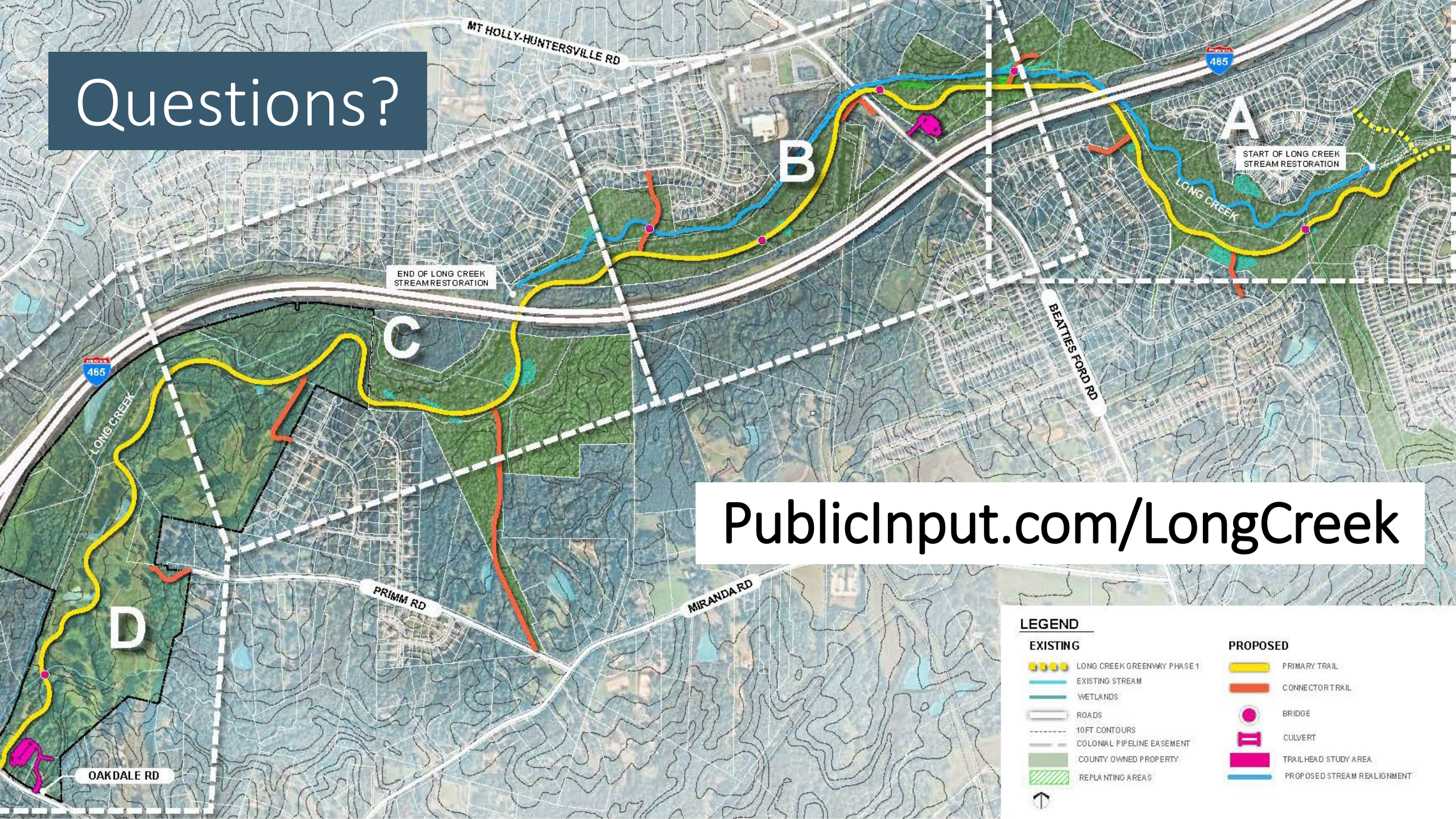
Stream Enhancement: Proposed Long Creek



Mecklenburg County
Park and Recreation



Questions?



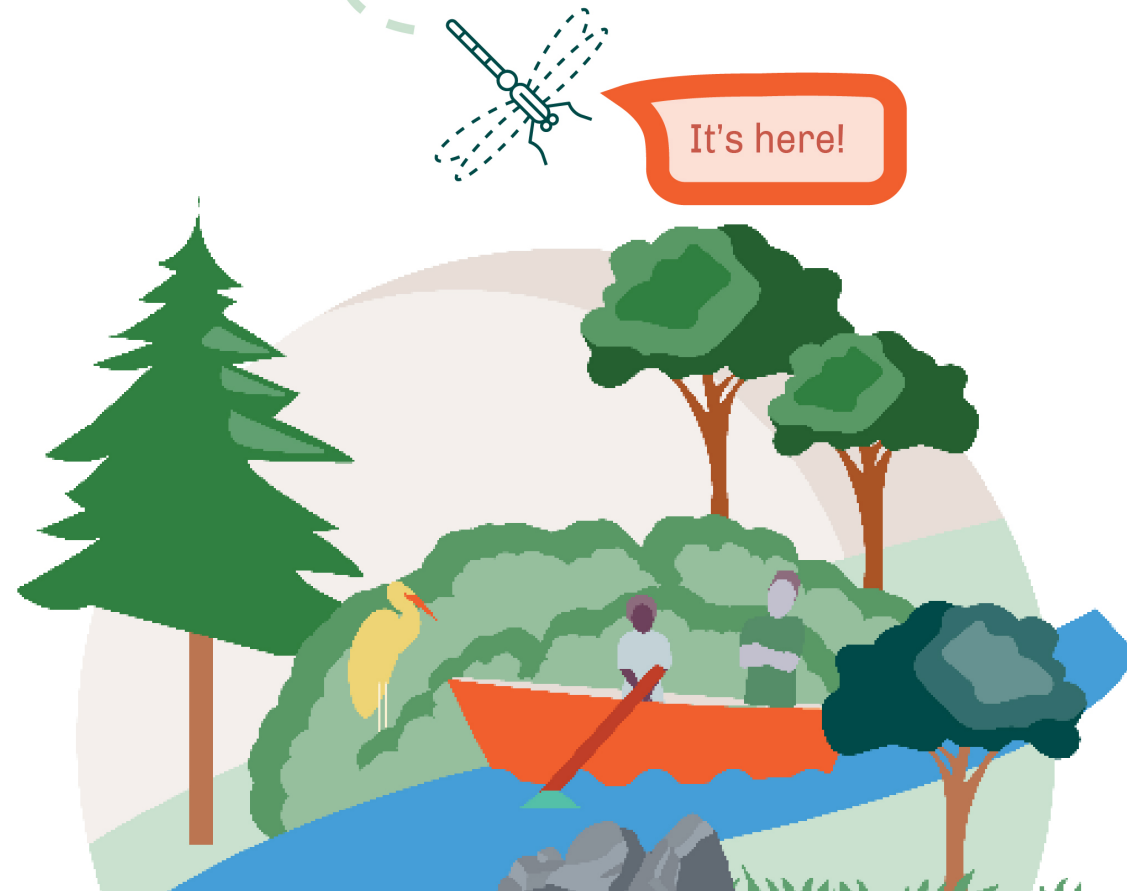
PublicInput.com/LongCreek

LEGEND	
EXISTING	PROPOSED
LONG CREEK GREENWAY PHASE 1	PRIMARY TRAIL
EXISTING STREAM	CONNECTOR TRAIL
WETLANDS	BRIDGE
ROADS	CULVERT
10FT CONTOURS	TRAILHEAD STUDY AREA
COLONIAL PIPELINE EASEMENT	PROPOSED STREAM REALIGNMENT
COUNTY OWNED PROPERTY	
REPLANTING AREAS	

Meck **Playbook**

Executive Summary

Read the
document and
**share your
feedback!**



A photograph of a paved trail in a park. In the foreground, a man in a grey t-shirt and dark shorts is jogging towards the camera. To his right, a woman in a black shirt and blue jeans is pushing a stroller away from the camera. Further down the path, a woman in a light blue shirt and grey pants is walking away. In the background, a man in a pink shirt and black pants is walking away, and a woman is walking a brown dog. The path is surrounded by green grass and trees.

Thank you!

PublicInput.com/LongCreek

Contact:

Katie Lloyd, PLA, ASLA
Greenway Trail Planner

980-266-0691

Katie.Lloyd@MeckNC.gov

Brian Sikes

Stream Restoration Project Manager

980-314-3227

Brian.Sikes@MecklenburgCountyNC.gov