

The 2050 Metropolitan Transportation Plan

-- Steps and Scenarios --

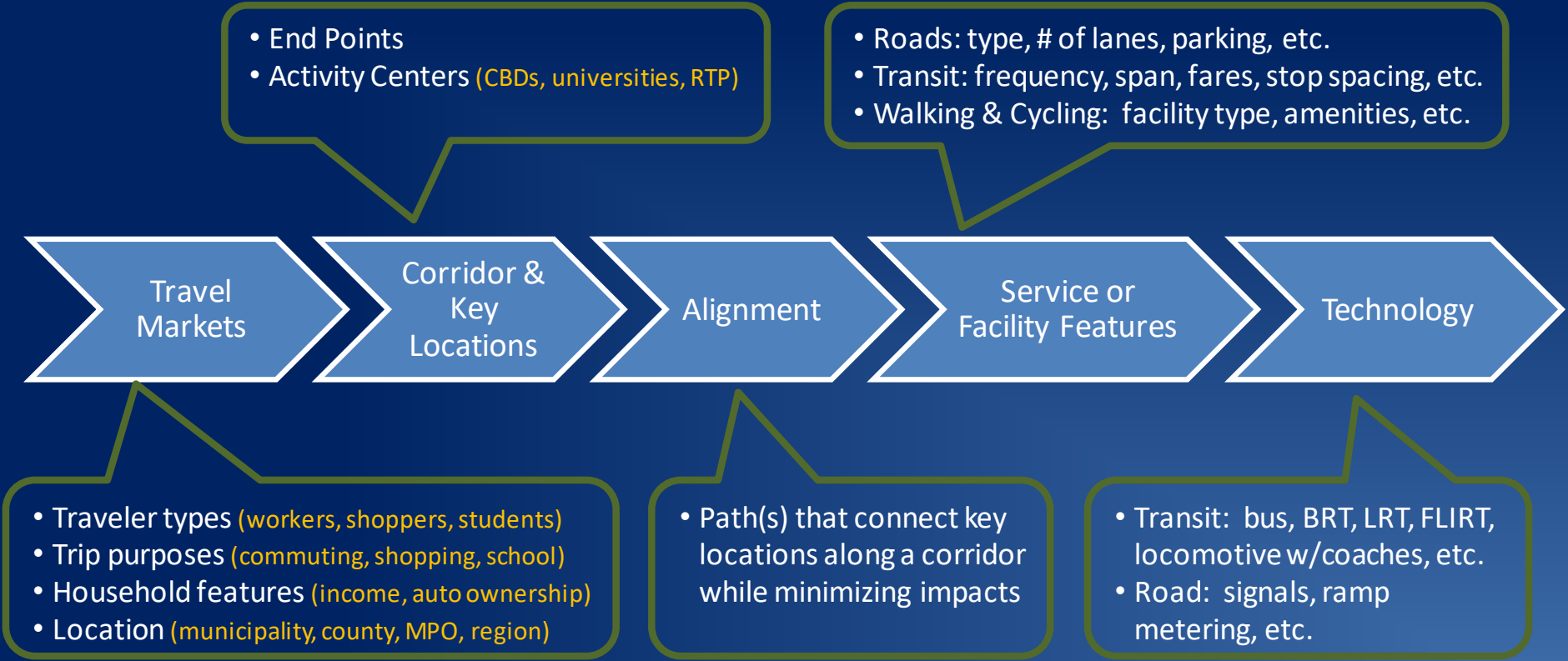
John Hodges-Copple
Triangle J Council of Governments

January 2021

Outline

- From markets to investments
- The 12 steps to the 2050 Metropolitan Transportation Plan
- Framework for Creating Development & Mobility Investment Scenarios
 - The CommunityViz Growth Tool
- Conversation Starters

From Travel Markets to Investments



Context

The “MTP” is the foundation for other plans and studies (these are transit examples, but the context applies to roads or other modes)

- 2050 Metropolitan Transportation Plan
- County Transit Plan updates in Wake, Durham and Orange Counties
- Project Studies and Designs:
 - **Commuter Rail** between Wake and Durham (and maybe extending to Johnston County in initial investment and Orange County in a latter phase)
 - Relocation of GoTriangle’s **Regional Transit Center**

Opportunities & challenges to consider...

- ... post-COVID conditions
- ... technology change
- ... balancing transportation *demand* concerns with *supply* concerns
- ... rethinking land use, affordable housing, transit pricing and parking policies

The 2050 Metropolitan Transportation Plan

1. Build the Planning Tools
 - a. CommunityViz Growth Allocation (TJCOG)
 - b. Triangle Region Transportation Model (ITRE-NCSU)
2. Determine Vision, Goals, Objectives, Performance Measures, Targets
3. Establish the Scenario Framework
4. Create the Development & Mobility Investment Foundations for Each Scenario
5. Adopt Population and Job Guide Targets to 2050
6. Analyze a “Learning Scenario” based on *Connect2045* and updated population and job data and forecasts

The 2050 Metropolitan Transportation Plan

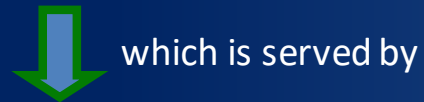
7. Conduct a “Deficiency and Needs” Analysis
8. Refine and Use Tools to Create Detailed Scenarios
9. Conduct Alternatives Analysis of Scenarios
10. Select a Preferred Scenario
11. Complete 2050 MTP Report
12. Adopt the 2050 MTP and Demonstrate Air Quality Conformity (late 2021/early 2022)

Why: Scenarios Can Inform Decisions

❖ Land Use ...



❖ Travel ...



❖ Mobility Investments

A robust analysis looks at each of these elements:
land use, travel markets, and investments



**CommunityViz
growth forecast**

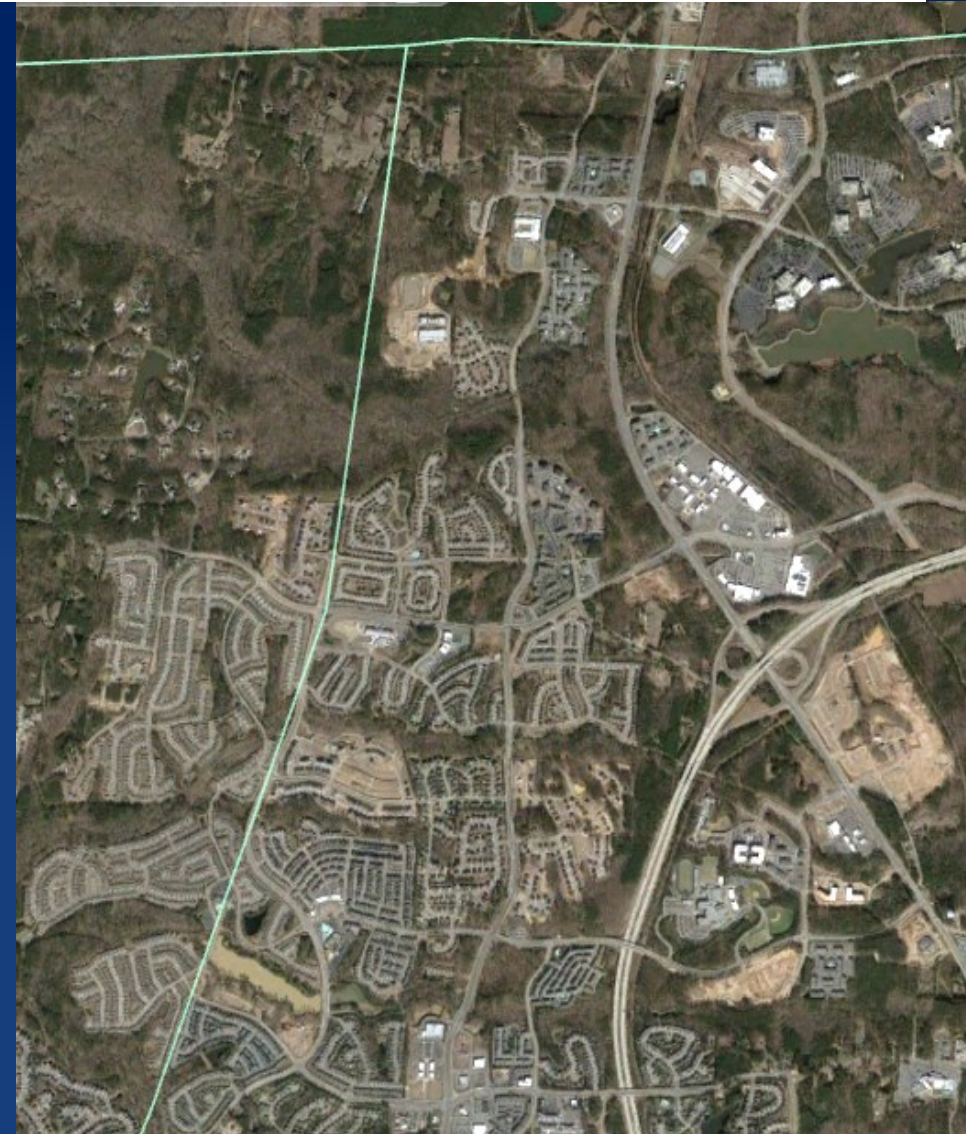
**transportation
model**

**2050
transportation
plan**

Why: An example of the importance of looking at future scenarios



October 2008

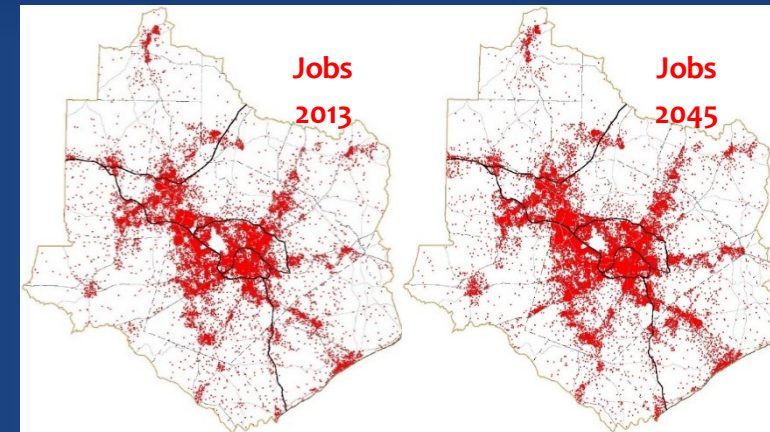
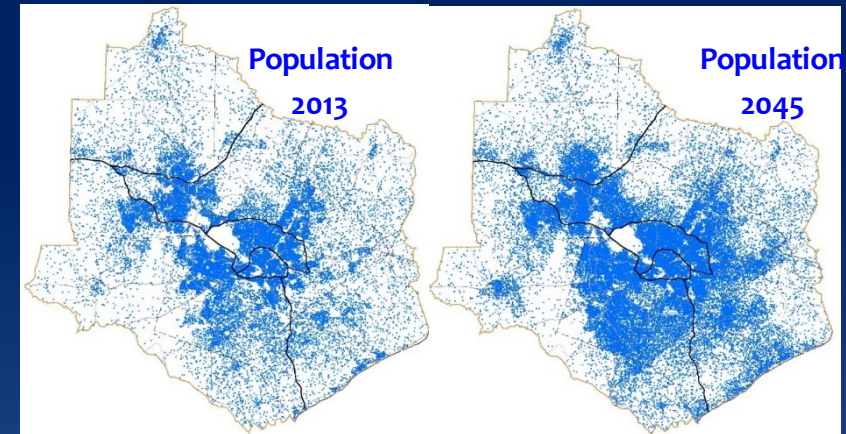


February 2019

How: Beginning With The End In Mind

- ❖ **During 2021**
 - ❑ Creating different future growth scenarios
 - ❑ Allocating growth based on the scenarios
 - Population
 - **Jobs**
 - ❑ Evaluating the differing impacts among scenarios

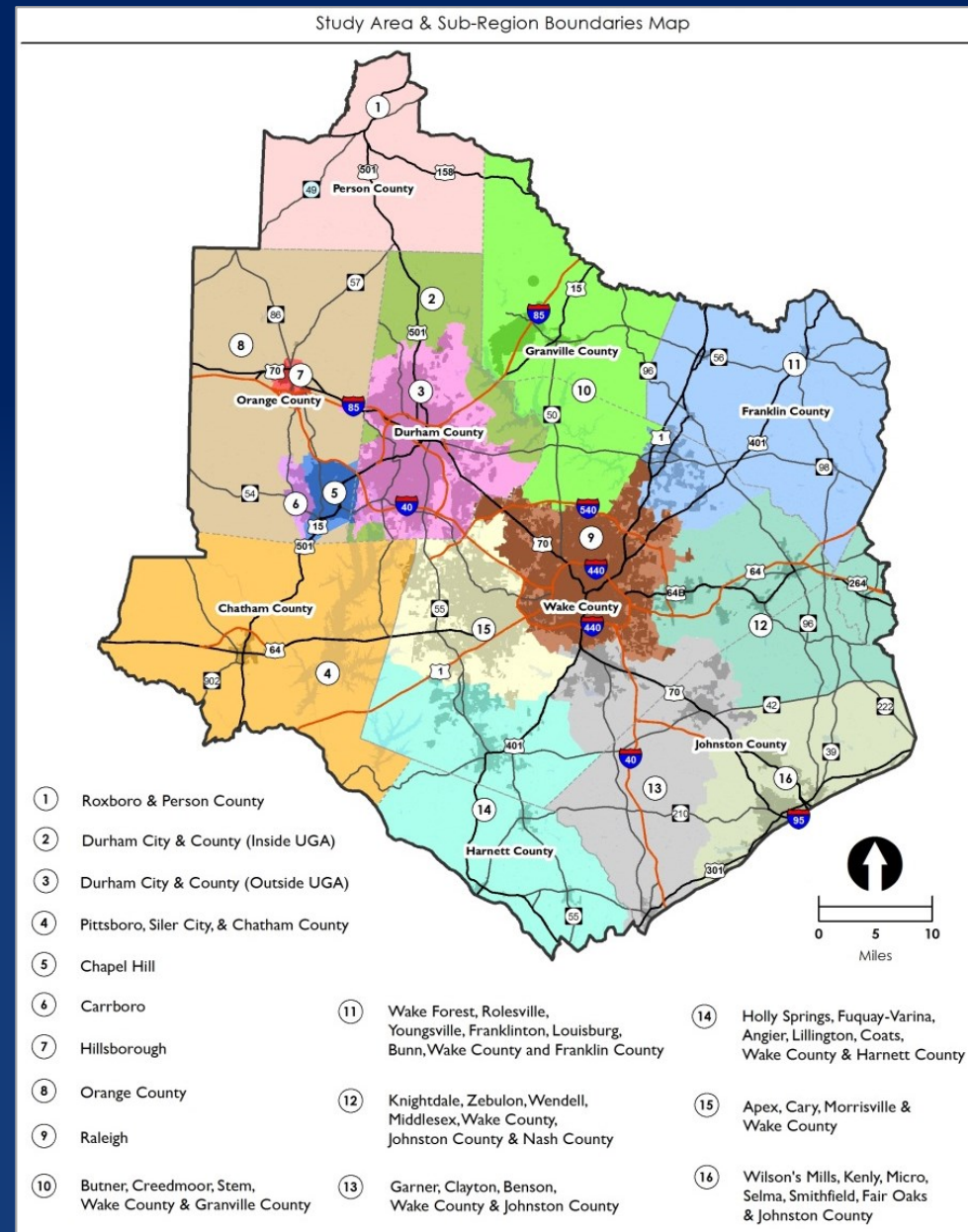
- ❖ **Late 2021 or Early 2022**
 - ❑ 2050 MTP adopted by CAMPO and DCHC MPO



2045 MTP results: each dot is 50 jobs or people

How: the CommunityViz Growth Tool

- ❖ CommunityViz is a tool to understand growth capacities and allocate future growth
- ❖ It can be used to create future development scenarios and help understand their relative impacts
- ❖ It needs 5 basic inputs



What CommunityViz Needs To Create a Scenario



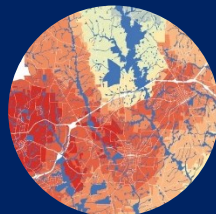
- ❖ The location of features that constrain development, such as water bodies, wetlands and stream buffers



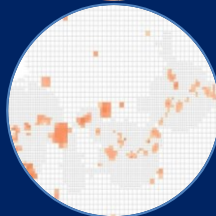
- ❖ The type of place each parcel **will become** (and the intensity of each place type for each jurisdiction)



- ❖ The current development status of each parcel relative to its future use



- ❖ The factors that will influence how attractive each parcel is for development, termed land suitability



- ❖ The types and amounts of growth that will be allocated, termed “growth targets”

CommunityViz Local Guide Books & Look-Up Tables






www.tjcog.org → programs → transportation planning → metropolitan planning organization support [scroll down to CommunityViz]



Scenario Framework

"Prediction is very difficult, especially if it's about the future."

-- Nils Bohr, Nobel laureate in Physics



Connect 2050 Scenario Matrix (example from 2045 MTP)			 Mobility Investment Foundation				
			Existing & Committed	Constrained	Moderate	Aspirational	Comprehensive Transport Plan
	Development Foundation	Existing or Underway	This cell is the base for all scenarios				
		Existing Zoning		✓			
		Community Plans			Community Plans Scenario		
		Aspirational			✓	Aspirational Scenario	
		Build-Out					If unlimited \$ and capacity growth

Note: **Green cells** were scenarios analyzed in 2045 MTP; check-marked cells were considered for analysis, but not analyzed in detail.

The Development Foundation

-- a focus on important trip origins and destinations --

Key Hubs

Hubs	Description	Examples
 Anchors	Places with the highest concentrations of jobs and services, plus places with moderate intensity and an anchor institution that can influence mobility-based policy decisions	<ul style="list-style-type: none"> • Metropolitan CBDs • Major Universities • Medical Centers • Research Triangle Park
 Mainstays	Places with regionally significant concentrations of jobs, either outright or in comparison to their surroundings	<ul style="list-style-type: none"> • Many mid-sized town and city centers • Some suburban centers, often along major transportation corridors

REINVEST Neighborhoods – equity centered places

RE	Race/Ethnicity – the degree to which a neighborhood is home to people who are Black, Indigenous or People of Color (BIPOC).
IN	Income – the degree to which people in the neighborhood live in households with lower annual incomes.
VE	Vehicles – the degree to which households in the neighborhood report having no vehicles available
ST	Status – the degree to which a neighborhood has a specific characteristic, e.g. the # of legally-binding, affordability-restricted (LBAR) housing units

Conversation Starters

1. What key mobility investments should be part of one or more scenarios?
2. If our transportation investment decisions are to avoid being “silo-ed,” what are other policy issues that should be front and center in 2050 MTP scenario discussions?
3. What else should we be mindful of as we consider long term investments for mobility within the Triangle?
4. What is most important to measure as we compare scenarios?