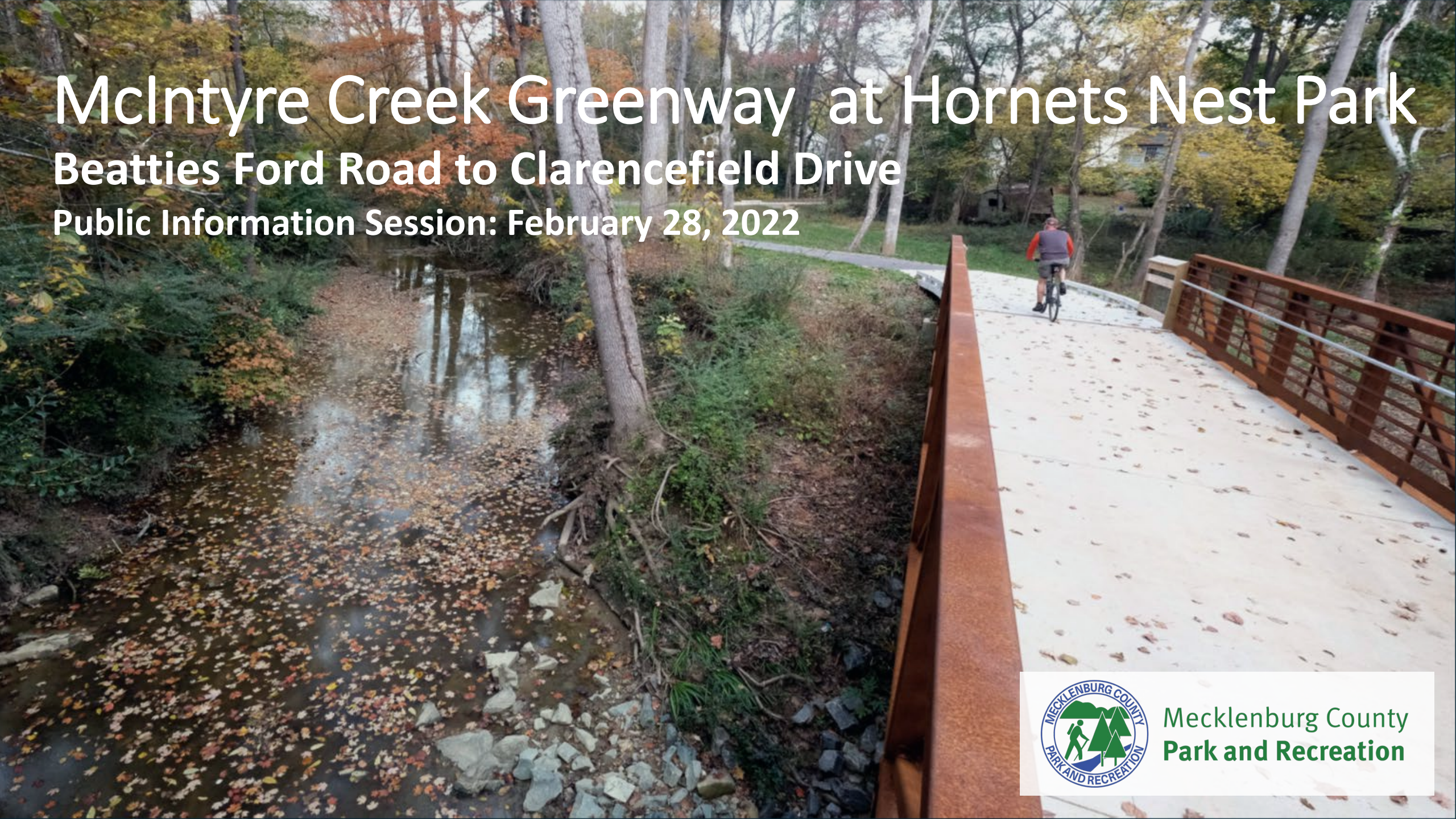


McIntyre Creek Greenway at Hornets Nest Park

Beatties Ford Road to Clarencefield Drive
Public Information Session: February 28, 2022



Mecklenburg County
Park and Recreation

Getting to know Zoom



The screenshot shows a Zoom meeting window with a participant gallery at the top containing six names: You, Park & Rec, Your Neighbor, The Consultant, Elected Official, and Another Neighbor. A green banner at the top of the gallery reads "You are viewing Park & Rec's screen". The main meeting area is dark blue and contains the following text:

- Stay muted!
- Video optional.
- Red line through microphone = muted
- Red line through video = off

A pink box highlights the "Unmute" and "Start Video" buttons in the bottom toolbar. A yellow arrow points from the text "Ask questions and add comments to the chat throughout the meeting!" to the chat window on the right. The chat window shows a list of participants with icons for mute, video, and chat, and a text input field at the bottom.

Project Consultants



Mecklenburg County
Park and Recreation



Landscape Architecture
and Civil Engineering



Geotechnical
Engineering

Hazen

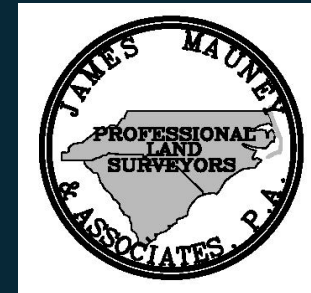
Environmental Science
Structural Engineering

G2 | **INC.**

Cost Estimating

PALACIO

Project Specification



Surveying

McIntyre Creek Fun Facts



Mecklenburg County
Park and Recreation



- McIntyre Creek is a living link to the history of the Charlotte region. “The Hornet Connection”. One half mile south of the creek is The Historic McIntyre Farm. Site of the 1780 Battle of the Hornets Nest or Battle of The Bees, where 14 local farmers defeated General Cornwallis and his band of British troops.
- The greenway will be in Hornets Nest Park, 140-acre regional park. Amenities include BMX Bike Track, fishing pier, 18-hole disc golf, ballfields, tennis courts, Play60 Fitness Zone , indoor pavilion and 8 shelters. Hornets Nest Park purchased in 1975 was originally a part of the McIntyre Farm.
- McIntyre Creek is a third order headwater stream that drains directly into Long Creek which eventually joins the Catawba River. A stream that is seven order or larger constitutes a river.



1938



2020

Greenways Overview



Mecklenburg County
Park and Recreation



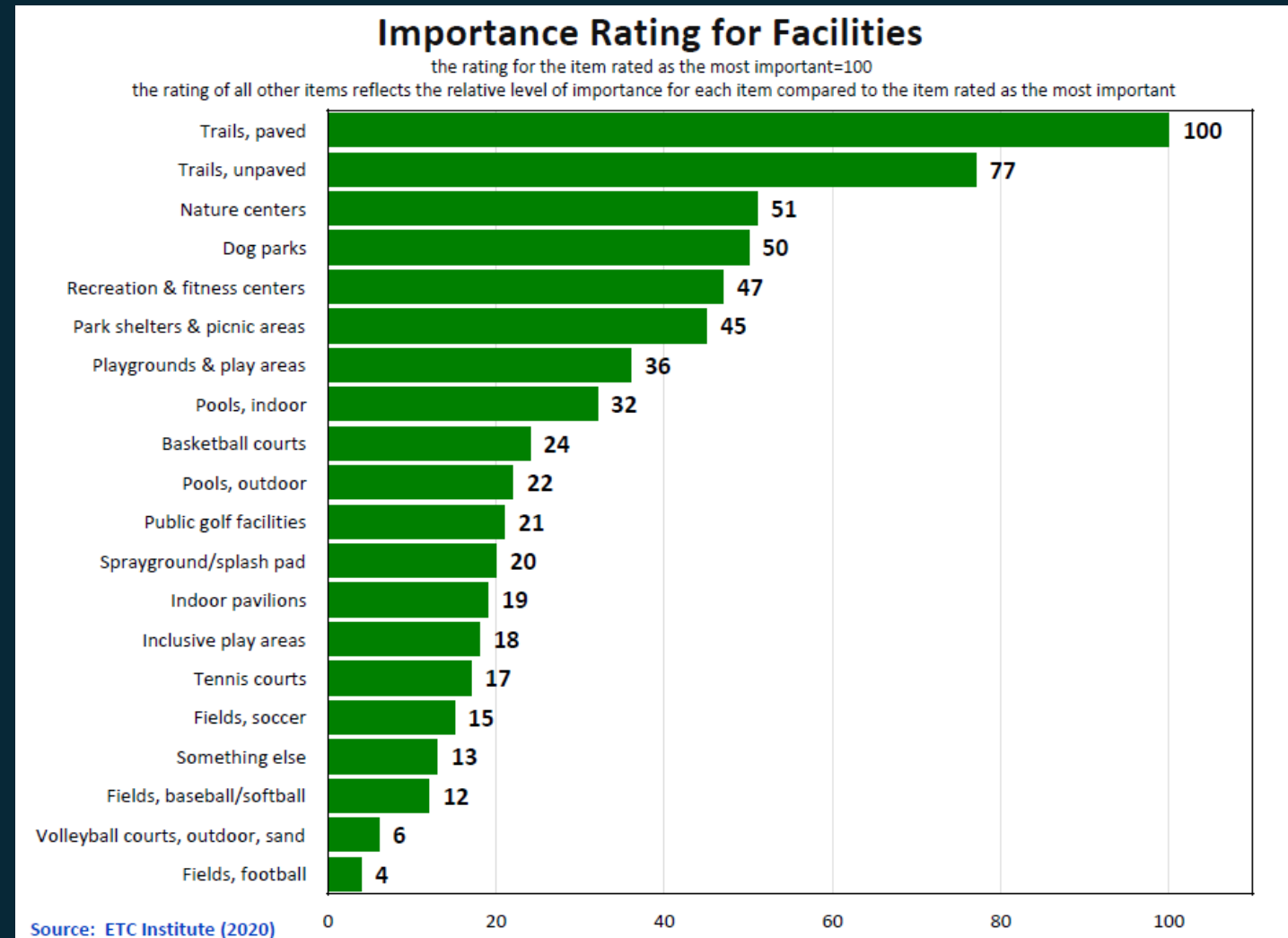
- Vegetated natural buffers that help protect water quality, reduce the impacts of flooding and provide wildlife habitat.
- Linear parks that connect people and places
- Trails that provide recreation, transportation, fitness and economic benefits for all to enjoy.
- Promote diversity, health, quality of life, good business and stretch our tax dollars.

Little Sugar Creek Greenway

Greenways Overview



- In 1966, the Charlotte-Mecklenburg Master Plan for recreation recommended greenways “as logical natural elements useful in creating a sense of physical form and order within the city.”
- **#1 Amenity** requested by the residents today
- Greenway Master Plan includes 308 miles of greenway trails and 200+ miles of urban trails



Accelerated Greenway Plan



Mecklenburg County
Park and Recreation



- Accelerated plan is to complete 30 new miles of greenway between 2019 - 2023

Miles	Greenway Development Status
61	Existing/Developed
12.4	Funded – In Construction (Includes City + Town projects)
23	Funded – In Design
11.3	Funded – By Others
~107	Total Greenway Miles funded



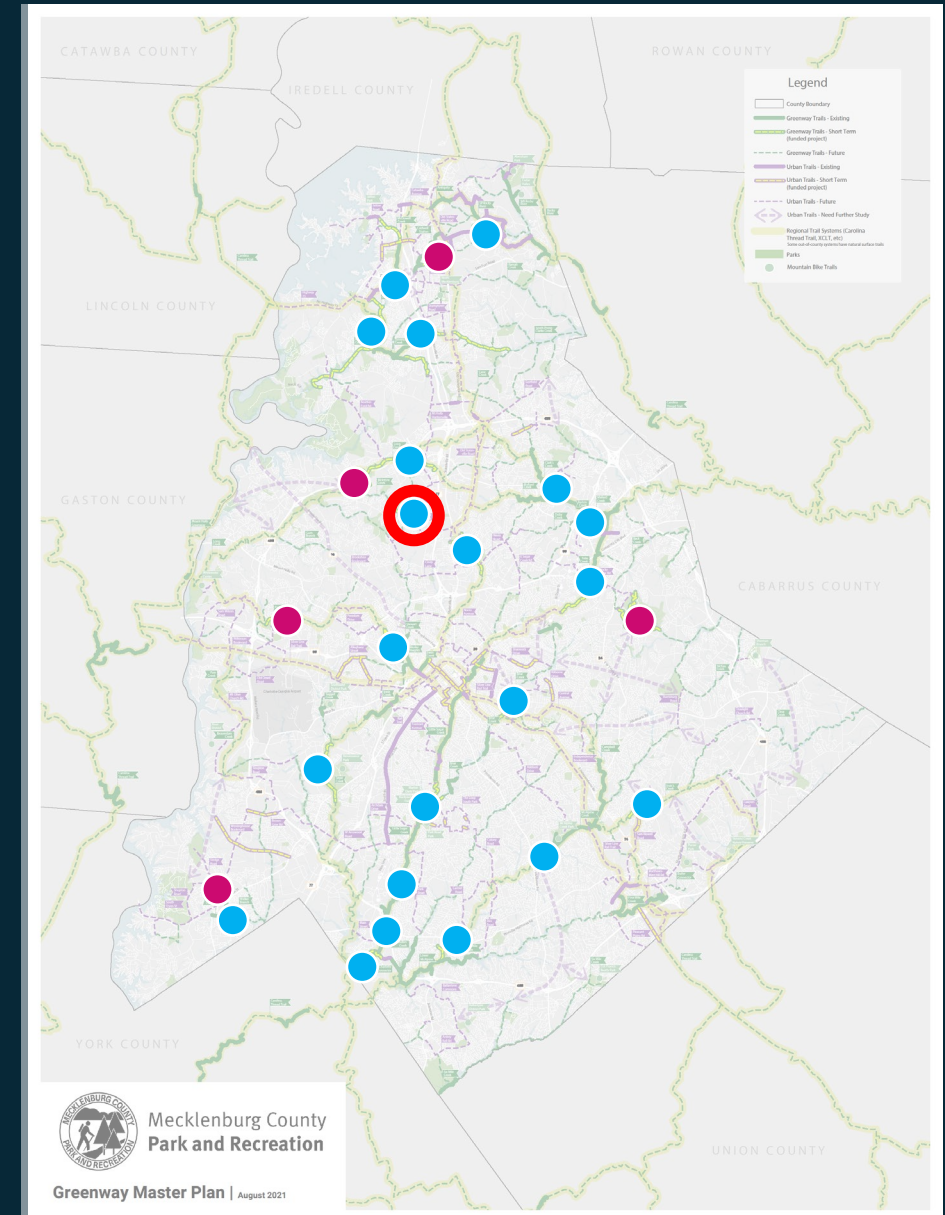
Greenway Project Locations



Mecklenburg County
Park and Recreation



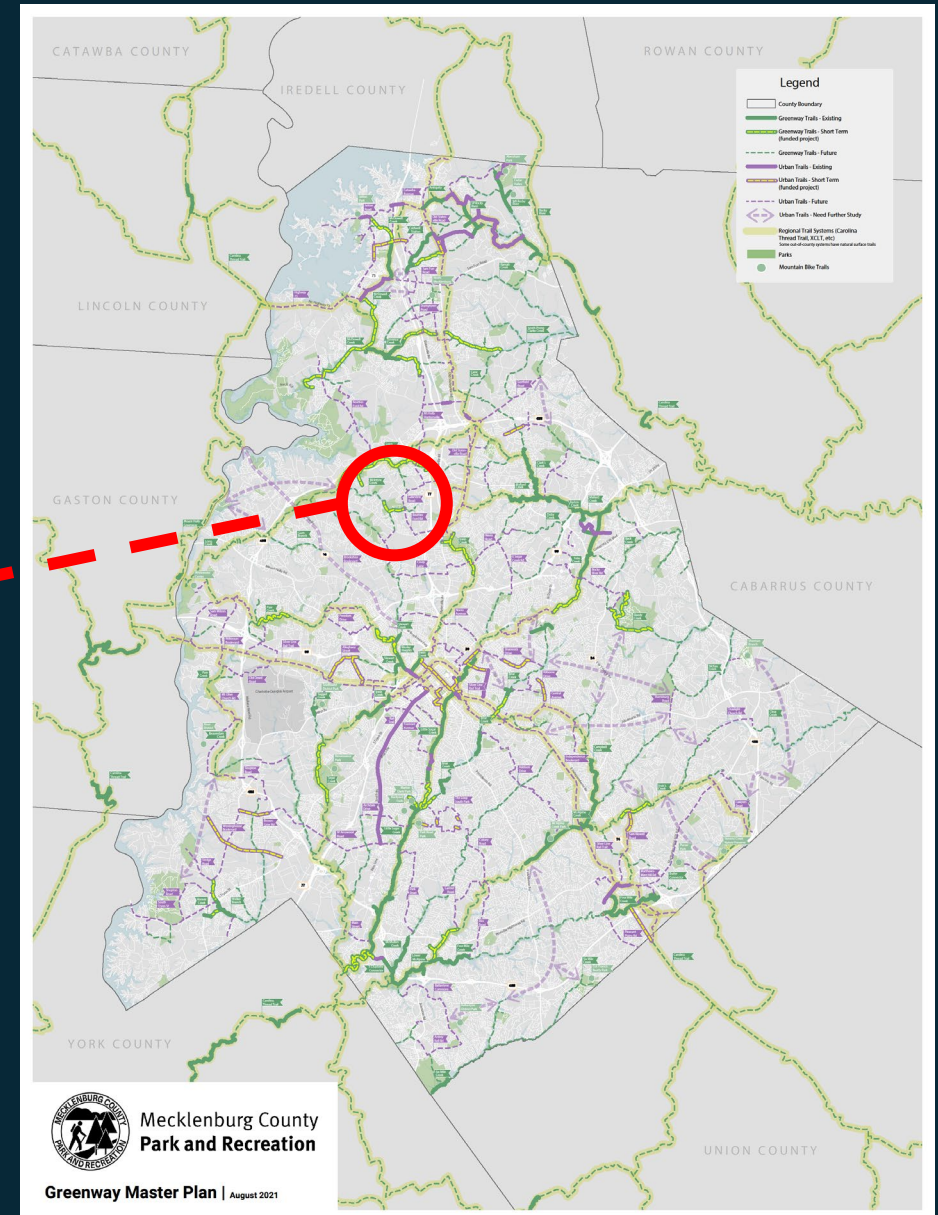
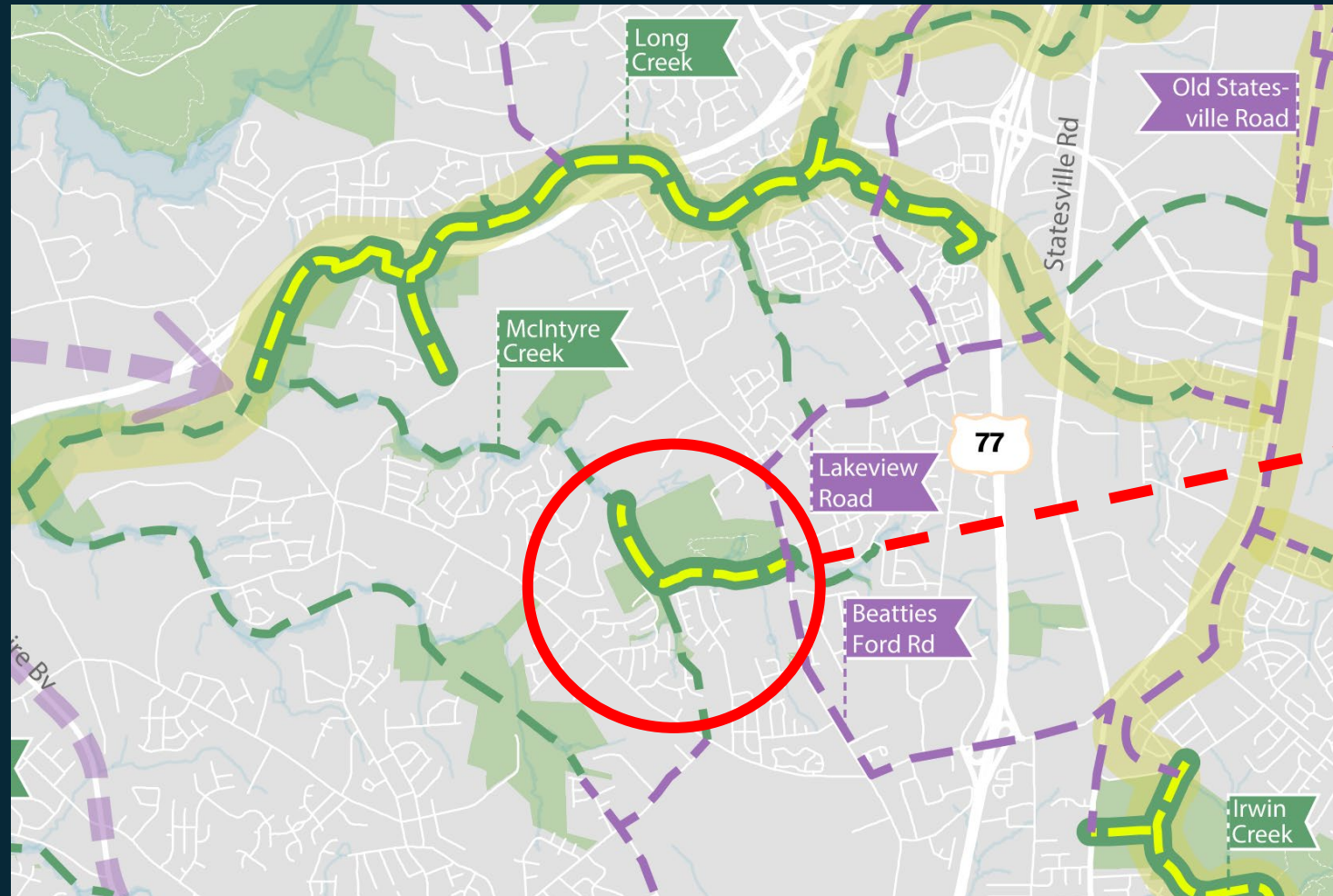
- CIP Funded Projects
- Accelerated Greenway Projects



McIntyre Creek Greenway



Mecklenburg County
Park and Recreation



Mecklenburg County
Park and Recreation

Greenway Master Plan | August 2021

Project Schedule



Mecklenburg County
Park and Recreation



McIntyre Creek Greenway

- Design & Permitting: **Ongoing**
- Bidding: **Fall 2022**
- Construction Start: **Winter 2022**
- Construction Completion: **Winter 2023**



McIntyre Creek Greenway Overview



Mecklenburg County
Park and Recreation



Trail
Master Plan

McIntyre Creek Greenway



Mecklenburg County
Park and Recreation



Existing McIntyre Creek



Mecklenburg County
Park and Recreation



Existing McIntyre Creek
Tributary



Trull Street Connection



Clarencefield Drive
Connection

McIntyre Creek Greenway



Mecklenburg County
Park and Recreation



Existing McIntyre Creek



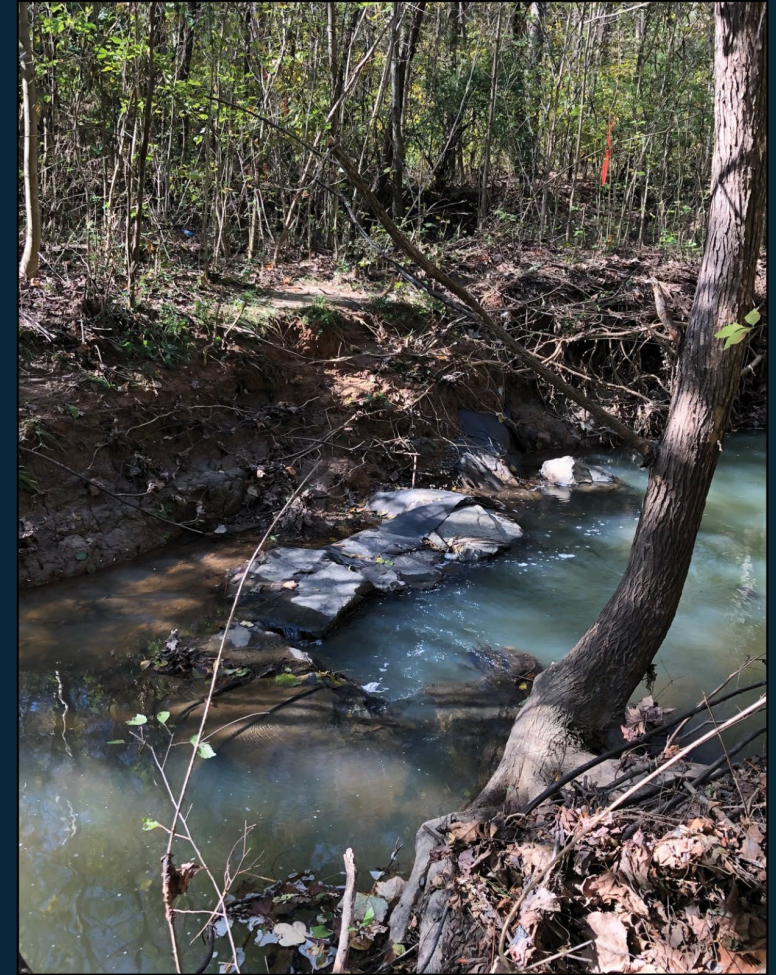
Mecklenburg County
Park and Recreation



Existing Conservation
Easement



Existing Sanitary Sewer
Easement

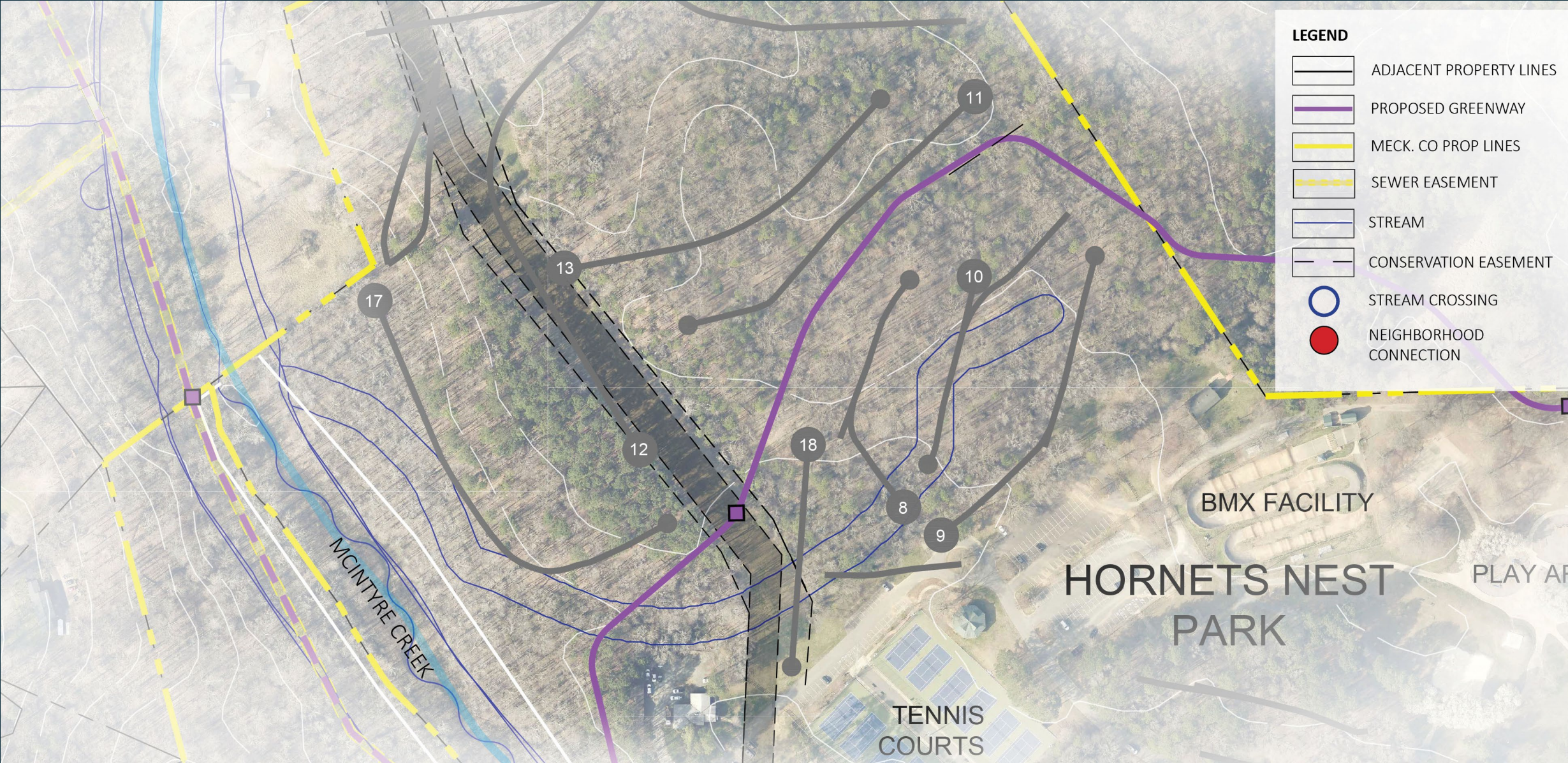


Existing McIntyre Creek
Crossing Location

McIntyre Creek Greenway



Mecklenburg County
Park and Recreation



LEGEND

- ADJACENT PROPERTY LINES
- PROPOSED GREENWAY
- MECK. CO PROP LINES
- SEWER EASEMENT
- STREAM
- CONSERVATION EASEMENT
- STREAM CROSSING
- NEIGHBORHOOD CONNECTION

Existing McIntyre Creek



Mecklenburg County
Park and Recreation



Existing Gas Pipeline



Existing Disc Golf

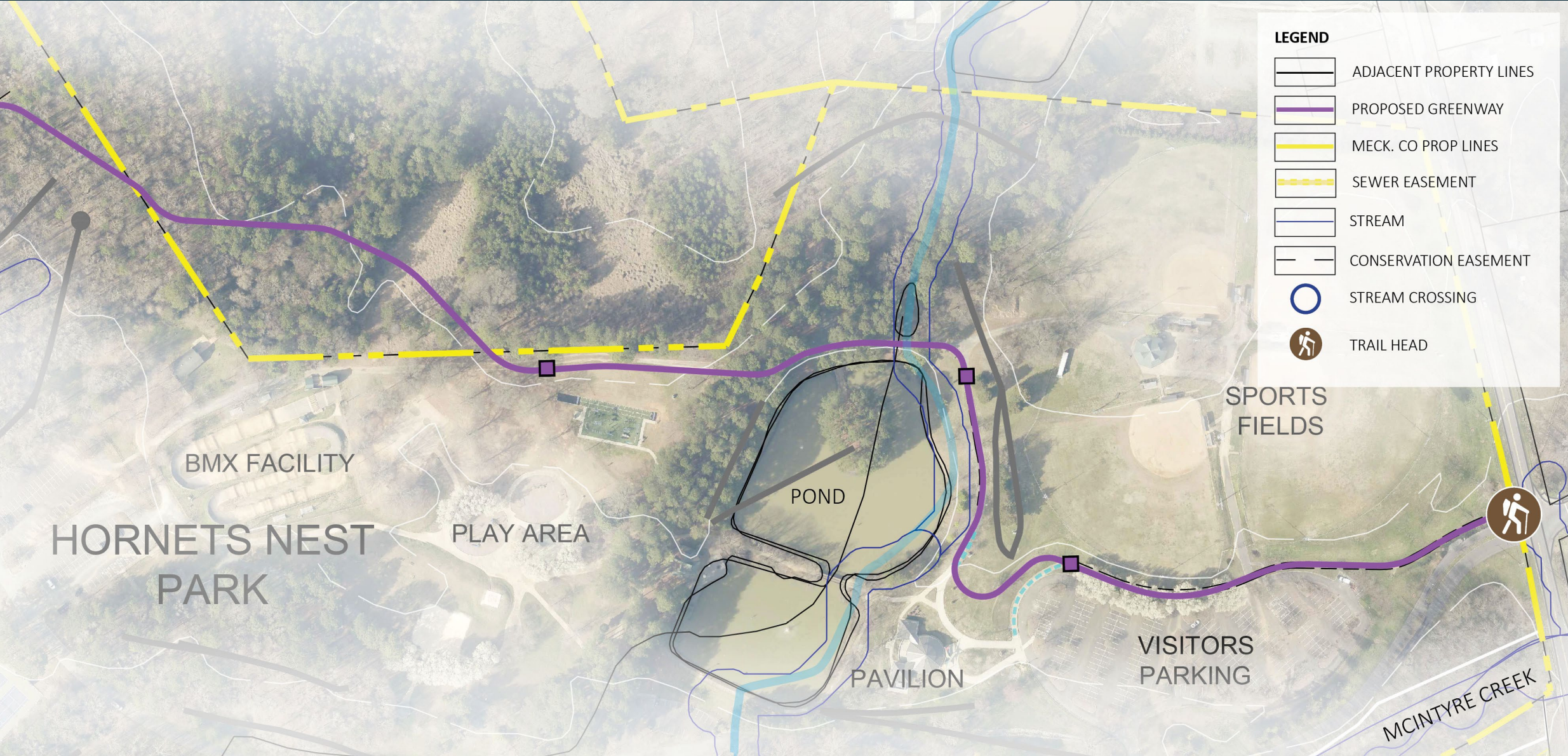


Existing Disc Golf

McIntyre Creek Greenway



Mecklenburg County
Park and Recreation



Existing McIntyre Creek



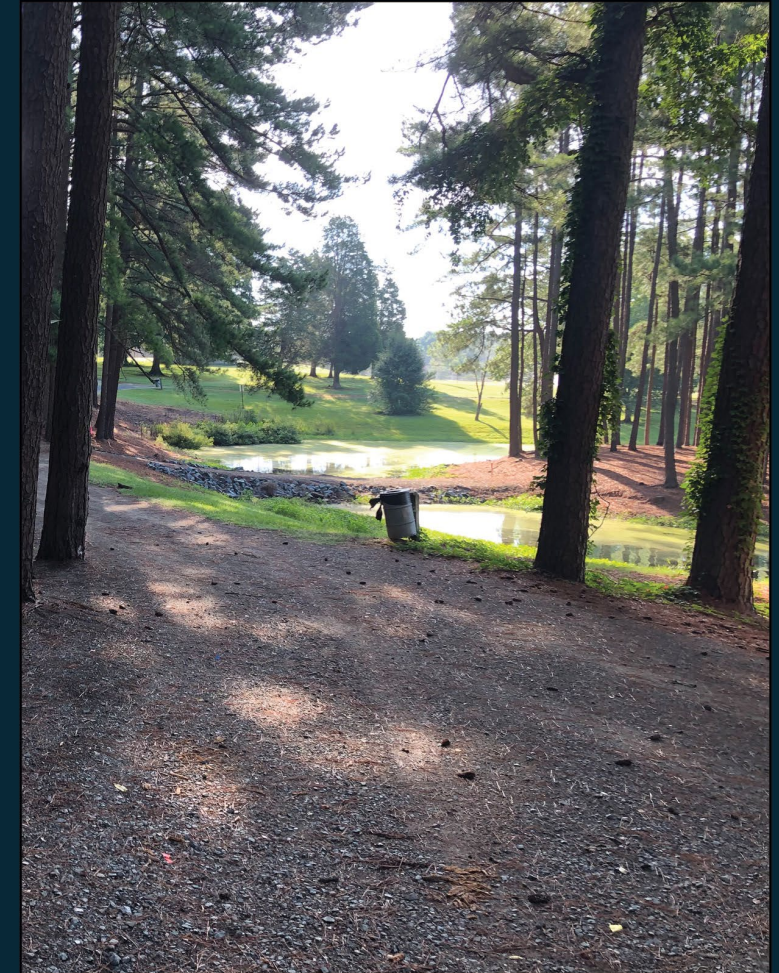
Mecklenburg County
Park and Recreation



Existing Park Sidewalk



Existing Park Trail



Existing Pond

Example Low Water Crossing



Mecklenburg County
Park and Recreation



■ Campbell Creek Greenway Low water crossing



■ Four Mile Creek Low water crossing

Example Neighborhood Connections



Mecklenburg County
Park and Recreation



Photos from Walker Branch Greenway

Example Boardwalk



Mecklenburg County
Park and Recreation



Photo from
Toby Creek
Greenway

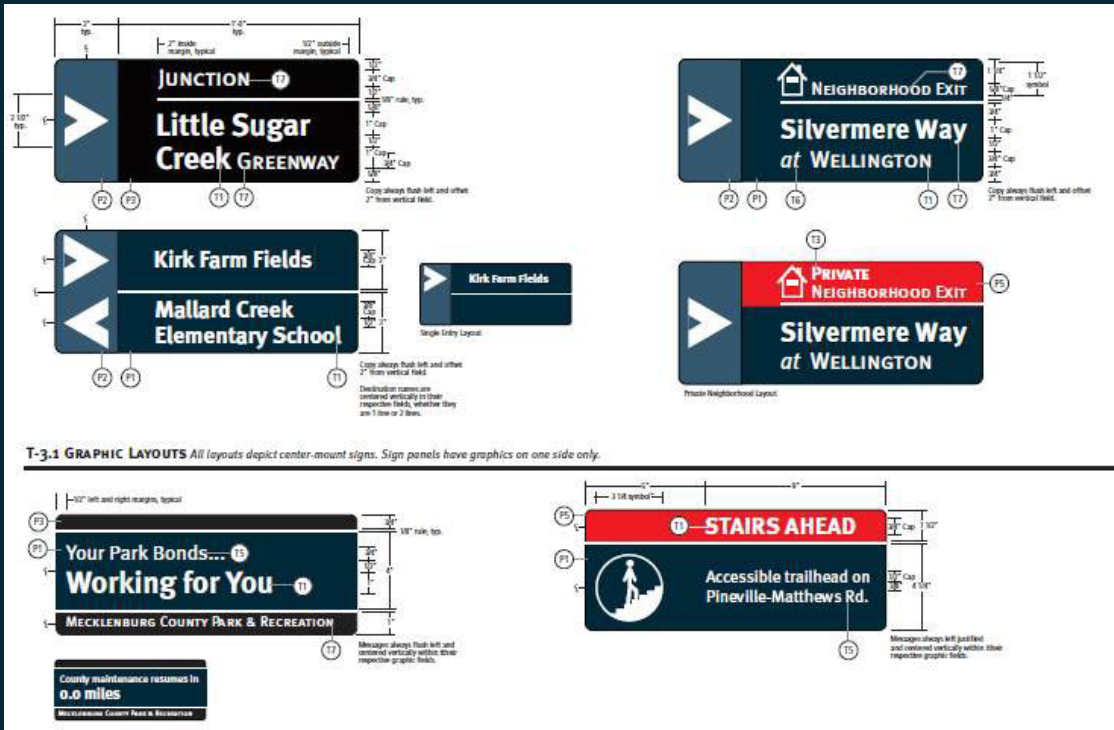
Example Greenway



Mecklenburg County
Park and Recreation



Example Signage



Questions?

www.publicinput.com/McIntyre

BMX FACILITY

HORNETS NEST
PARK

PLAY AREA

POND

PAVILION

VISITOR
PARKING



Park & Recreation



Mecklenburg County
Park and Recreation



MECKPASS IS AVAILABLE
Come workout with us! Purchase a MeckPass for access to all Aquatic and Fitness areas today.



Popular: Click on an activity to explore more!



Unique Facilities

Sportsplex, American Legion Memorial Stadium and more.

[Learn More](#)



Camping

Your "Great Urban Escape."

[Learn More](#)



Quest at Latta Nature Preserve

A new way to Learn. Play. Explore.

[Learn More](#)



Eastway Regional

The Charlotte region's first regional recreation center.

[Learn More](#)

Reserve a Facility

Reserve a facility for your private event.

Programs and Activities

Register to participate in an activity or program.

Park Notifications

Review our latest closure and repair information.

Park Explorer

Find recreation opportunities using our interactive map.



@MeckParkRec

parkandrec.com

A photograph of a paved path winding through a lush green park. In the foreground, a person in a white t-shirt and black shorts is walking away from the camera, holding a leash for a black and white dog. In the distance, two other people are walking towards the camera. The path is surrounded by dense green foliage and trees.

Thank you!

www.publicinput.com/McIntyre

Contact:

James Williams, ASLA
Park Planner

980-314-1038

james.williams@mecklenburgcountync.gov

Jennifer Brooks, PLA, ASLA
Project Manager

980-445-8724

jennifer.brooks@mecklenburgcountync.gov