


8/17/99

PROJECT REFERENCE NO. R-5757	SHEET NO. 39
RW SHEET NO.	
ROADWAY DESIGN ENGINEER	HYDRAULICS ENGINEER
INCOMPLETE PLANS DO NOT USE FOR A/W ACQUISITION	
DOCUMENT NOT CONSIDERED FINAL UNLESS ALL SIGNATURES COMPLETED	
Prepared in the Office of: 	NC FIRM LICENSE No: P-0339 504 Meadows Drive Hillsborough, NC 27278 (919) 732-3883 (919) 732-6676 (FAX)

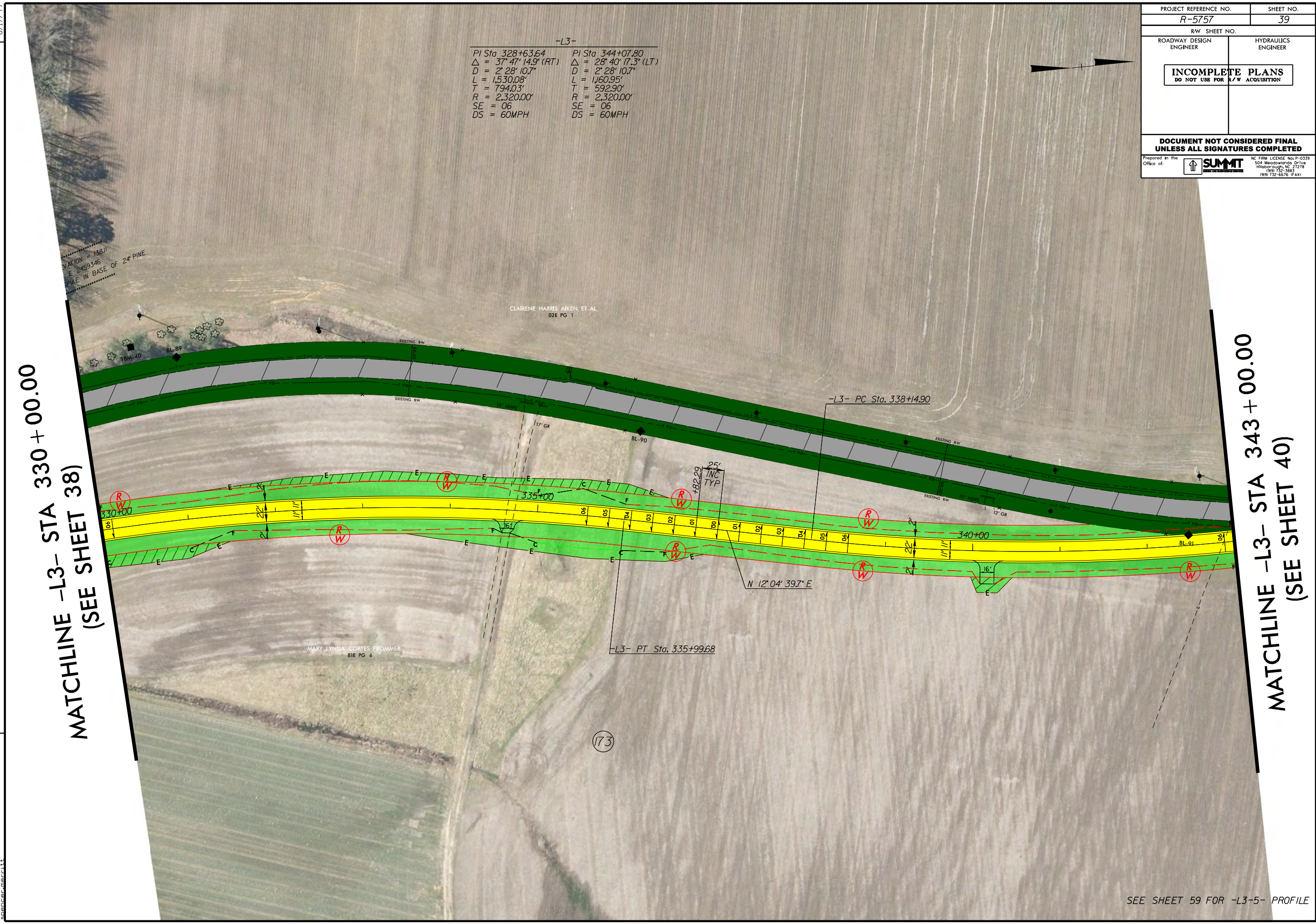
-L3-

PI Sta 328+63.64	PI Sta 344+07.80
$\Delta = 37^{\circ} 47' 14.9''$ (RT)	$\Delta = 28^{\circ} 40' 17.3''$ (LT)
D = 2' 28" 10.7"	D = 2' 28" 10.7"
L = 1,530.08'	L = 1,160.95'
T = 794.03'	T = 592.90'
R = 2,320.00'	R = 2,320.00'
SE = 06	SE = 06
DS = 60MPH	DS = 60MPH

REVISIONS

MATCHLINE -L3- STA 330 + 00.00
(SEE SHEET 38)

MATCHLINE -L3- STA 343 + 00.00
(SEE SHEET 40)



8/17/99 SYSTEMS
 R-5757-39-39.PHM.dgn
 8/17/99 11:11 AM

SEE SHEET 59 FOR -L3-5- PROFILE