



# Park Road Park Dredging Project

Community Information Meeting

July 11, 2024

Virtual Meeting



# Getting to know Zoom



Zoom Meeting | You are viewing Park & Rec's screen | View Options

Participants: You, Park & Rec, Your Neighbor, The Consultant, Elected Official, Another Neighbor

Participants (8)

- You
- Park & Rec
- Your Neighbor
- The Consultant
- Elected Official
- Another Neighbor

Unmute | Start Video

Unmute | Start Video

Participants | Chat | Share Screen | Record | Reactions | Leave

To: Everyone | Type message here...

Stay muted! Video optional.

Red line through microphone = muted | Red line through video = off

Ask questions and add comments to the chat throughout the meeting!



# Introductions



Mecklenburg County  
Park and Recreation



- Project Owner: Mecklenburg County
  - Asset & Facility Management
  - Parks & Recreation



Gina Straga, PE



Bert Lynn, PLA,  
ASLA, LEED AP



Kevin Brickman,  
PLA, ASLA

- Consultant Team: LJB Engineering



Neal Banerjee, PE, CFM



Amy Black, PE



# Agenda



Mecklenburg County  
Park and Recreation



- Welcome and Introductions
- Background
- Why We're Here
- Project Overview
- Proposed Schedule
- What You Can Expect
- Questions



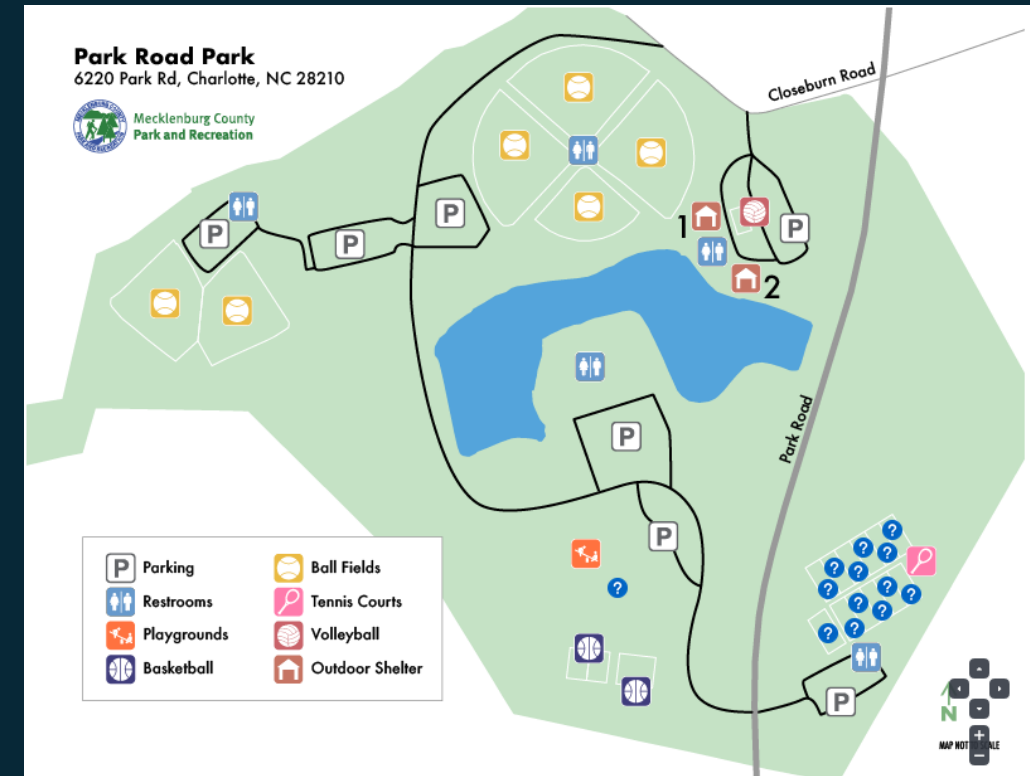
# Background



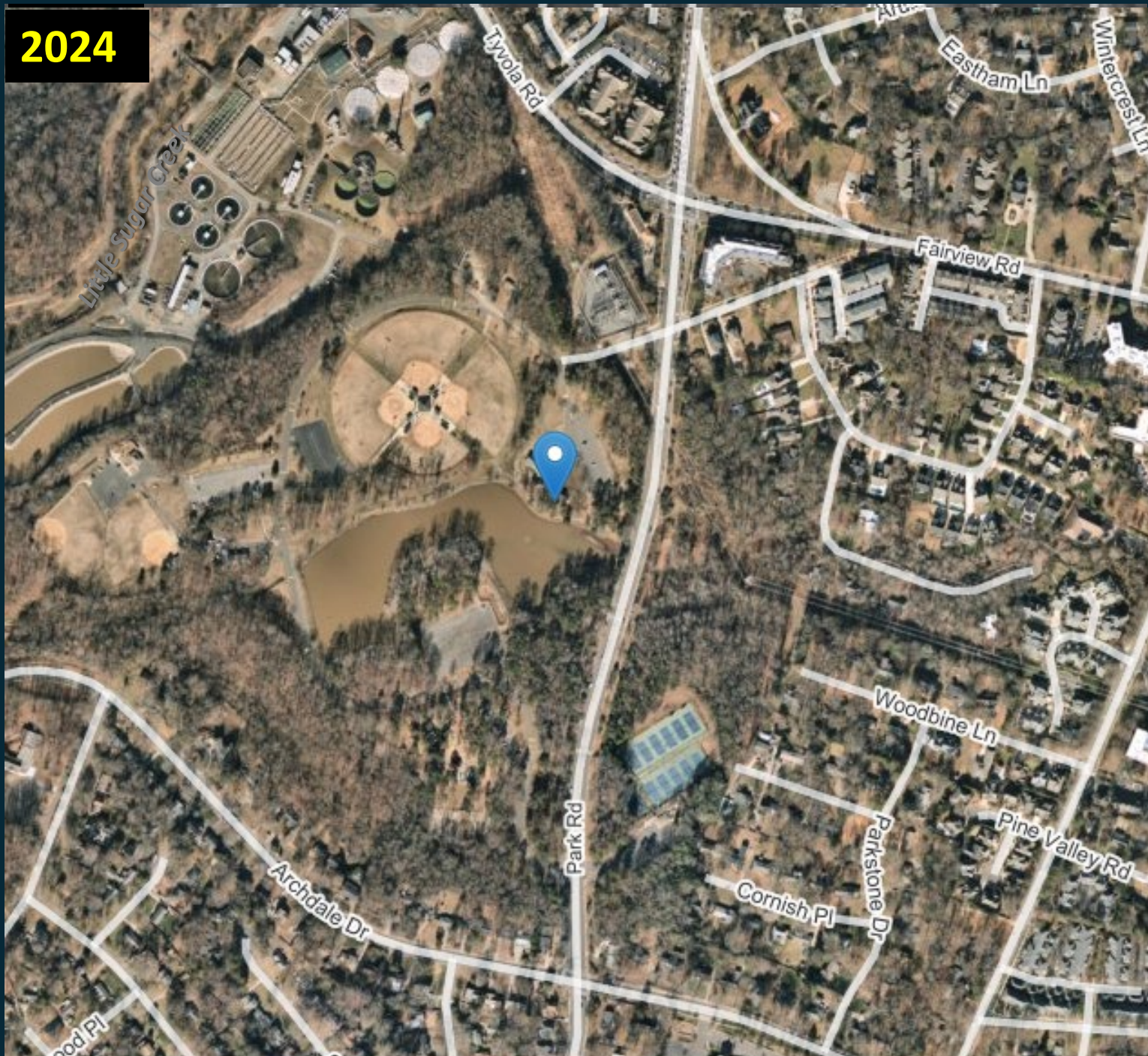
Mecklenburg County  
Park and Recreation



- Built in 1971 as central amenity in Park Road Park – one of the most heavily utilized parks in the County
- Pond physical Characteristics
  - 6.7-acre surface area
  - Depths:
    - 2 -4' upper (eastern) portion
    - 7 – 17' lower (western) portion
  - Dam:
    - 370' long, 25' high earthen dam
    - Classified “low” hazard by Dam Safety
    - Combination riser/barrel and spillway outlet structure with drain

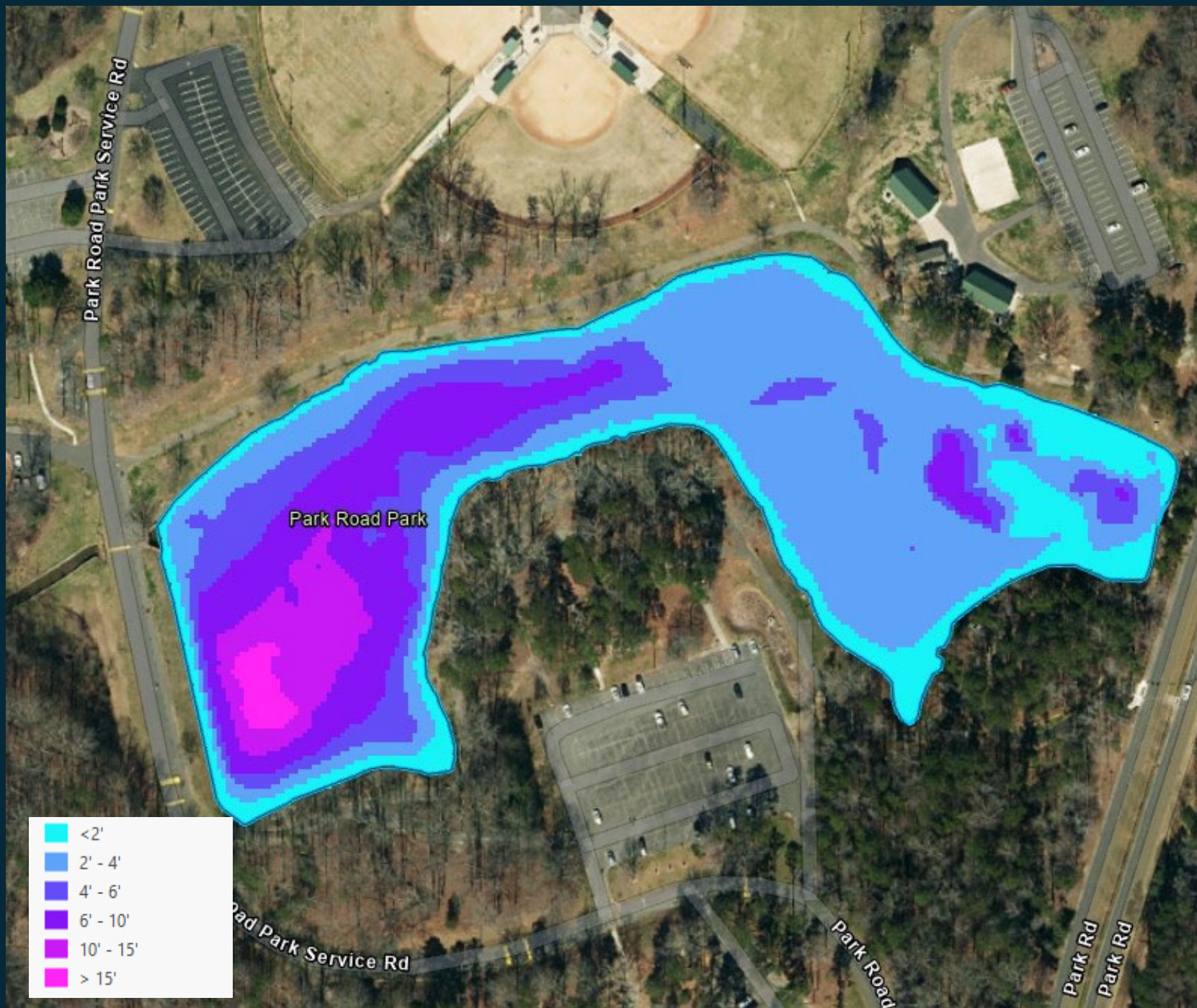


2024



*Park Road Park Through  
The Years (Animation)*

# Park Road Park Existing Water Depth



## Notes:

- Depth based on 2024 bathymetric survey and normal pool elevation of 622'

# Background



Mecklenburg County  
Park and Recreation

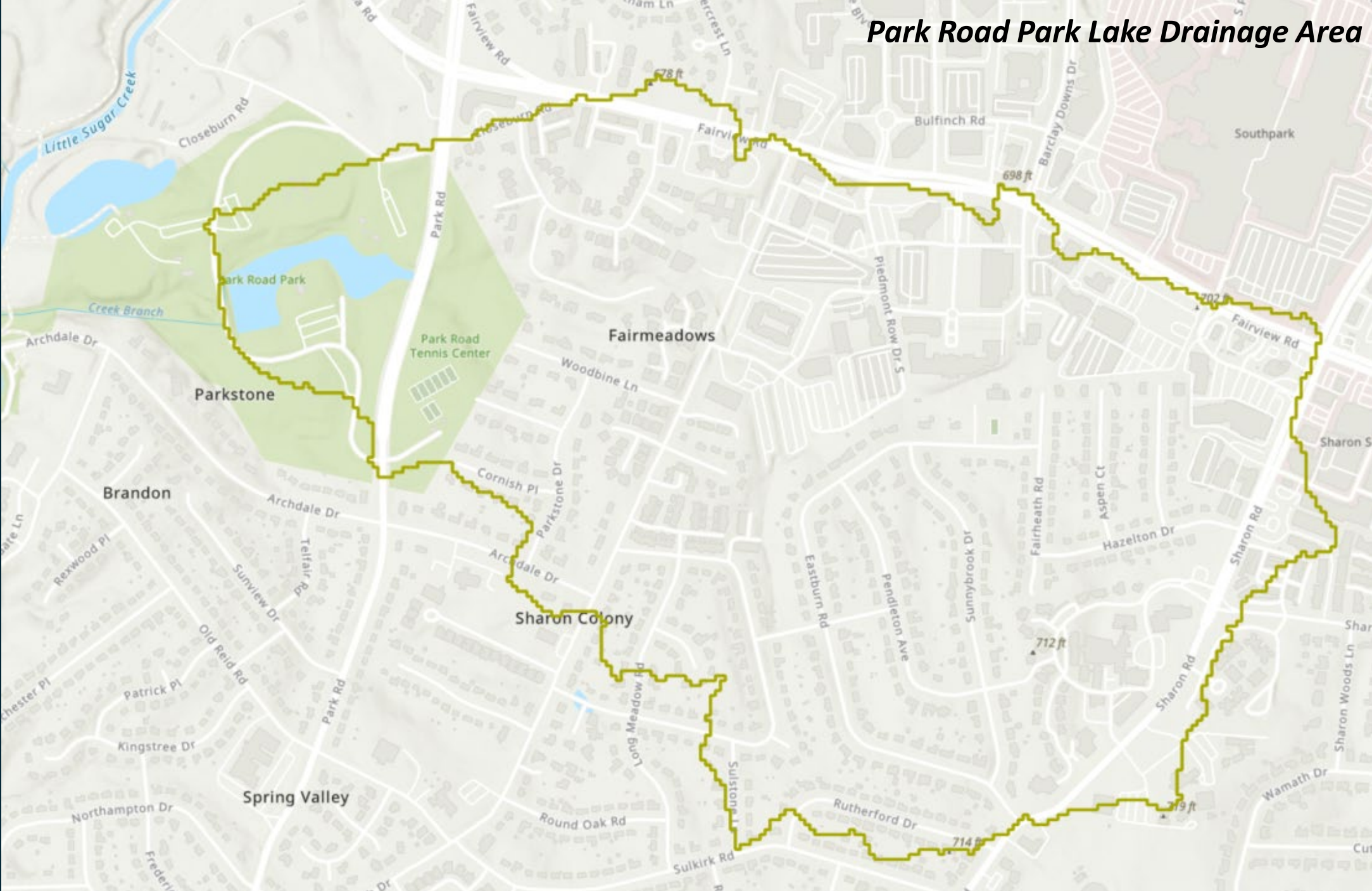


- Drainage area characteristics
  - 470-ac mature urbanized area east to Fairview and Sharon Rd
  - Largely residential and office/commercial
- Large majority of water enters from stream passing through culvert under Park Rd
- Pond discharges to small receiving stream that outlets into Little Sugar Creek above Archdale Dr.





# Park Road Park Lake Drainage Area



# Background



Mecklenburg County  
Park and Recreation



- Park has had history of sedimentation and “shallowness” particularly in upper section
- Pond improvement projected completed 2011
  - Pond focus was to address failing riser/barrel and flume on backside of dam
  - Included water quality enhancements
  - Walking trail and other park amenity improvements



*2001 Drought Conditions*



*Previous Park Road Park Pond Improvement Project  
(2009 – 2011)*



# Why We're Here



Mecklenburg County  
Park and Recreation



- Pond continues to experience sedimentation and “filling in” in upper section (visible “islands”)
  - Sub-optimal pond depth/volumes
  - Exacerbates blue-green algae growth
  - Results in reduced pond function and healthy aquatic ecosystem
- 2022 study quantified sedimentation and water quality metrics
  - “Hyper-eutrophic” (excessive nutrients)
  - 14,500 cy (9 ac-ft) of sediment





# Project Overview



Mecklenburg County  
Park and Recreation



- Design, permitting, and construction for pond dredging and enhancements
- Dredging project is separate, but being performed in conjunction with Pavilion improvement project



*Pavilion Improvement Concept Plan*



# PARK ROAD PARK DREDGING PLAN

6220 PARK ROAD PARK  
CHARLOTTE, NC 28210

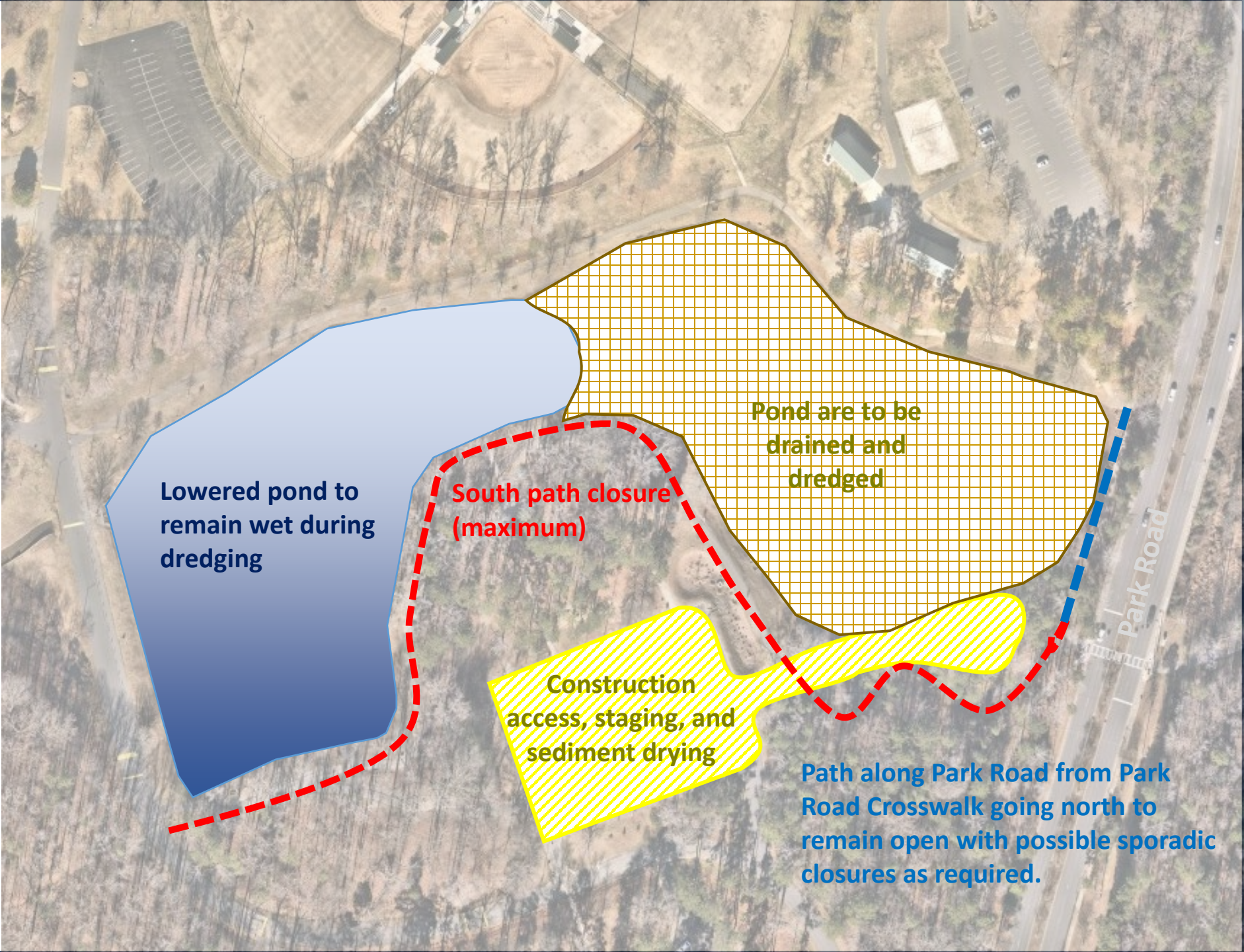


## Project Phases

- Outreach/Coordination
- Data Collection
- Evaluation and Design
- Construction Documents
- Permitting and Agency Approvals
- Contractor Bidding
- Construction
- Clean-up and Close-Out



**Pond During Construction**



**Lowered pond to remain wet during dredging**

**South path closure (maximum)**

**Pond are to be drained and dredged**

**Construction access, staging, and sediment drying**

**Path along Park Road from Park Road Crosswalk going north to remain open with possible sporadic closures as required.**



# Mechanical Dredging Examples



# Hydraulic Dredging Examples



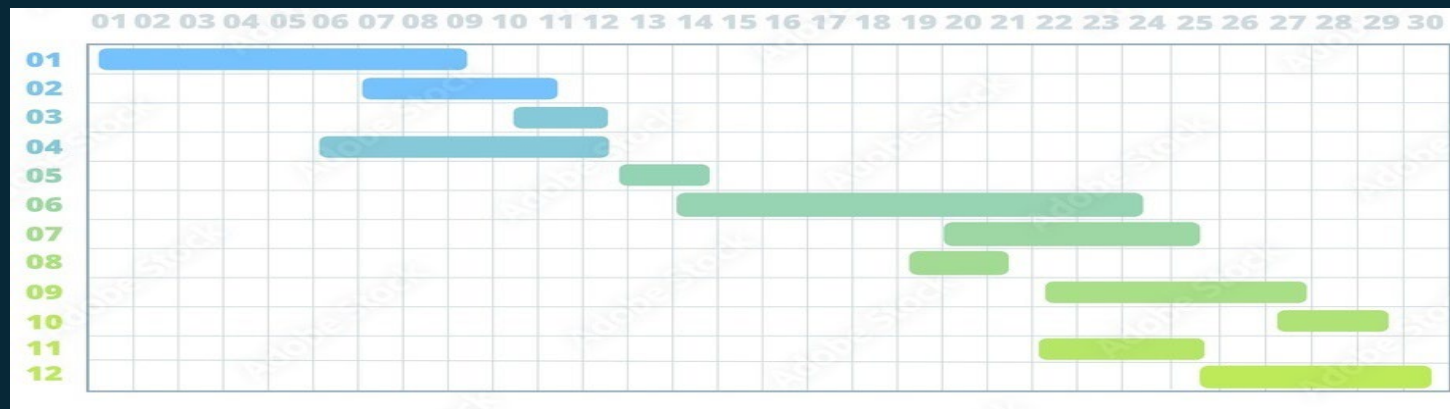
# Proposed Schedule



Mecklenburg County  
Park and Recreation



- March/April: Data Collection
- April – August 2024: Evaluation/Design
- August – September 2024: Construction Documents / Permitting
- September/October 2024: Bidding & Contract Award
- November 2024 to June 2025: Construction
  - Pavilion project expected completion in July



# What you can expect



Mecklenburg County  
Park and Recreation



## During Construction

- Construction equipment in and out
- Partial trail and pond closure
- Periods of activity and periods of waiting
  - Material will need to dry out for hauling
- Potential odors

## Following Construction

- Healthier and more functional pond



# Thank You



Mecklenburg County  
Park and Recreation



## Contacts:

Gina Straga, PE

Mecklenburg County AFM | Project Manager  
704.576.0348

[gina.straga@mecklenburgcountync.gov](mailto:gina.straga@mecklenburgcountync.gov)

Kevin Brickman, PLA, ASLA

Mecklenburg County Park & Rec | Sr. Planner  
704.369.9826

[kevin.brickman@mecklenburgcountync.gov](mailto:kevin.brickman@mecklenburgcountync.gov)

Public Input Website Link

[www.publicinput.com/ponddredging](http://www.publicinput.com/ponddredging)

<https://publicinput.com/ponddredging>

