
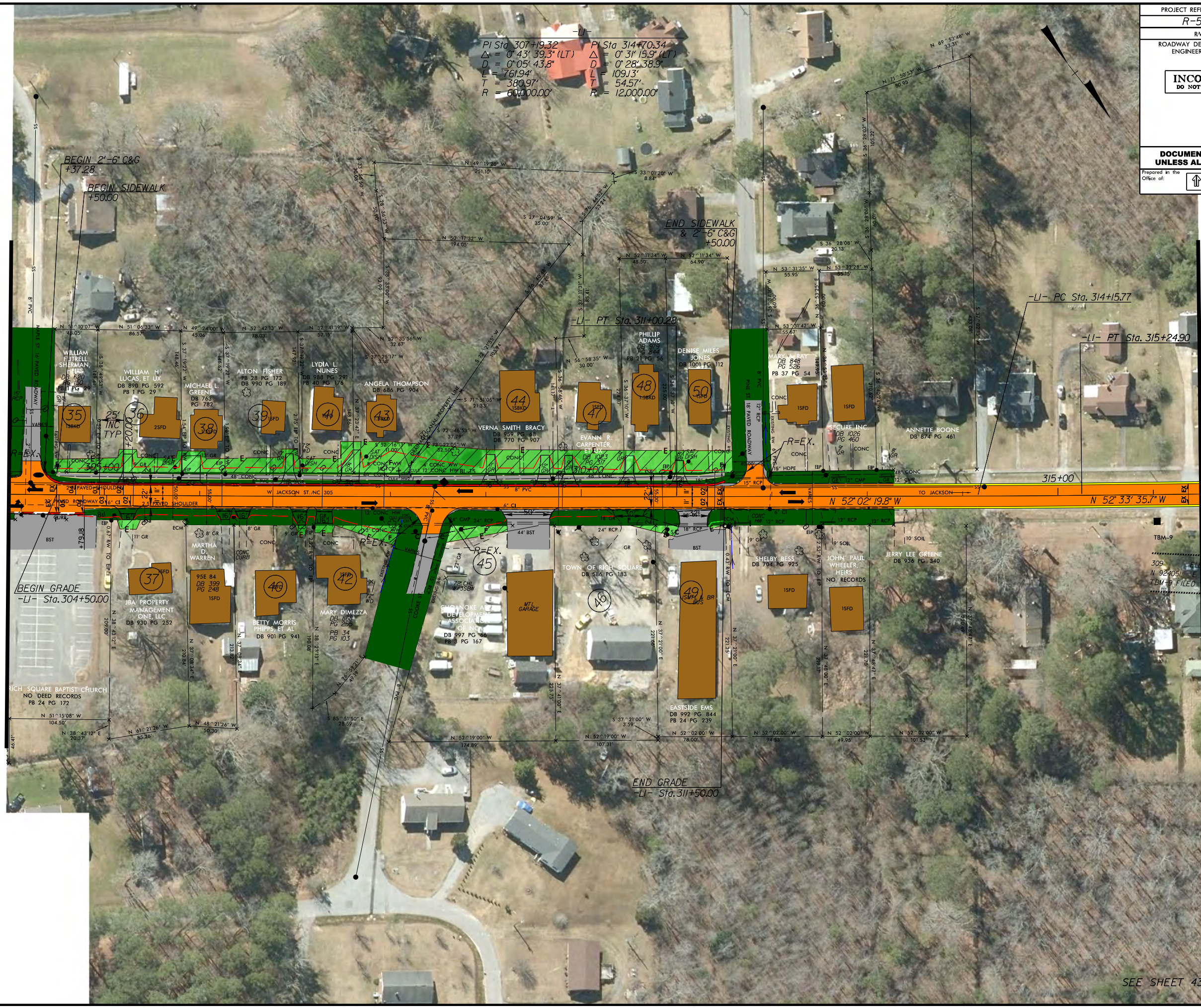


PROJECT REFERENCE NO. R-5757	SHEET NO. 9
RW SHEET NO.	
ROADWAY DESIGN ENGINEER	HYDRAULICS ENGINEER
INCOMPLETE PLANS DO NOT USE FOR R/W ACQUISITION	
DOCUMENT NOT CONSIDERED FINAL UNLESS ALL SIGNATURES COMPLETED	
Prepared in the Office of: 	NC FIRM LICENSE No. P-0339 504 Meadows Drive Hillsborough, NC 27278 (919) 732-3883 (919) 732-6616 (FAX)

MATCHLINE -LI- STA 304+00.00
(SEE SHEET 8)

MATCHLINE -LI- STA 316+50.00



$PI\ Sta\ 307+19.32$
 $\Delta = 0^\circ 43' 39.3\" (LT)$
 $D = 0^\circ 05' 43.8\"$
 $L = 761.94'$
 $T = 380.97'$
 $R = 60,000.00'$

$PI\ Sta\ 314+70.34$
 $\Delta = 0^\circ 31' 19.9\" (LT)$
 $D = 0^\circ 28' 38.9\"$
 $L = 109.13'$
 $T = 54.57'$
 $R = 12,000.00'$

REVISIONS

R:\5757\ROADWAY\PHM.dgn
 8/17/99

SEE SHEET 43 FOR -LI-3C- PROFILE