



# Residential and Commercial Development Examples

## Subarea Plan and Land Use and Zoning Map Amendments Public Review Draft

To request this information in another format or language, call 206-477-3800 or email [asklocalservices@kingcounty.gov](mailto:asklocalservices@kingcounty.gov).

Para solicitar esta información en Español, llamar al 206-477-3800 o envíe un mensaje de correo electrónico a [asklocalservices@kingcounty.gov](mailto:asklocalservices@kingcounty.gov).

Si aad u weyddiisato inaad ku hesho macluumaadkan Af-Soomaali, fadlan wac 206-206-477-3800 ama iimayl u dir [asklocalservices@kingcounty.gov](mailto:asklocalservices@kingcounty.gov).

Để có các thông tin này bằng tiếng Việt, xin gọi số 206-477-3800 hoặc gửi điện thư đến [asklocalservices@kingcounty.gov](mailto:asklocalservices@kingcounty.gov).



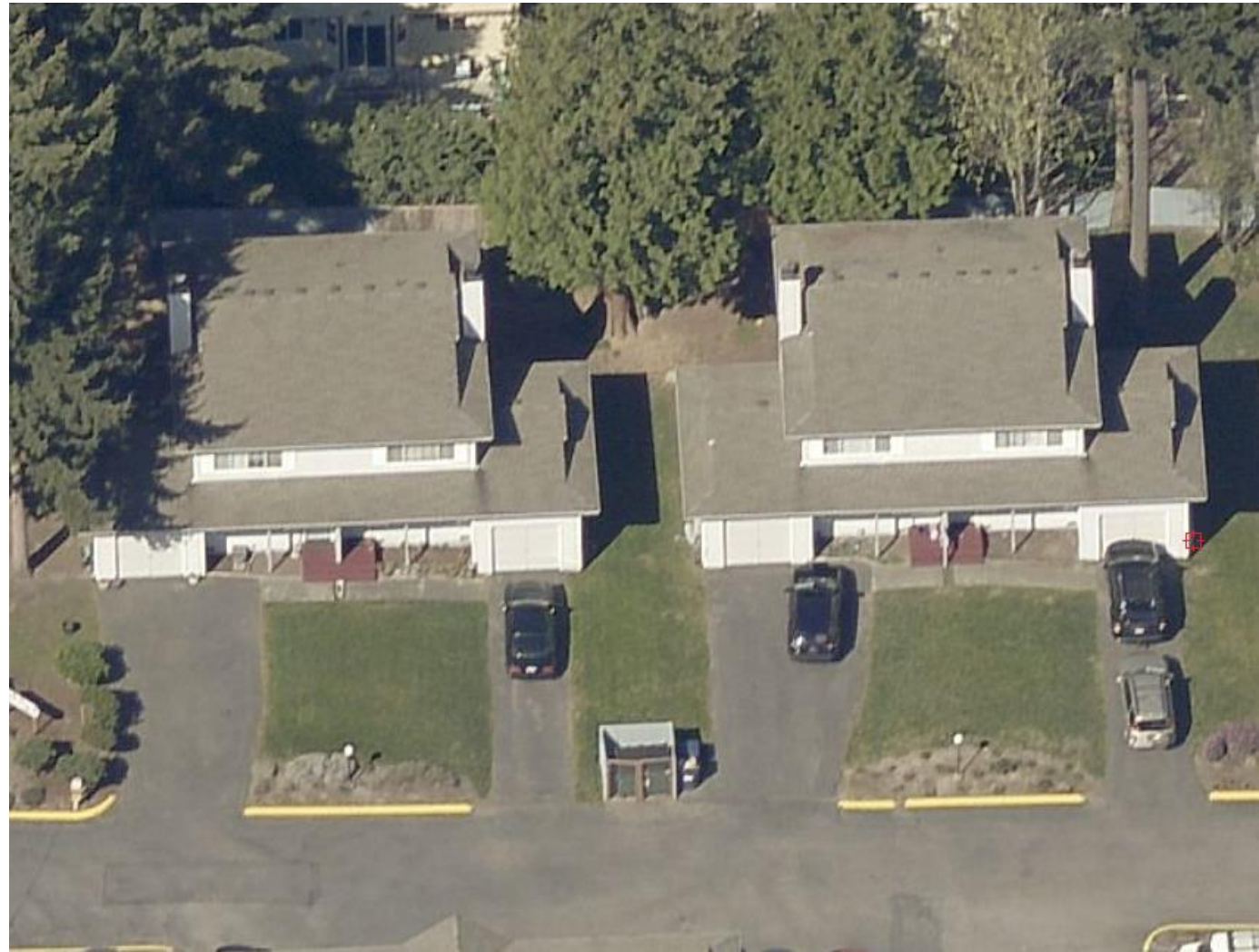
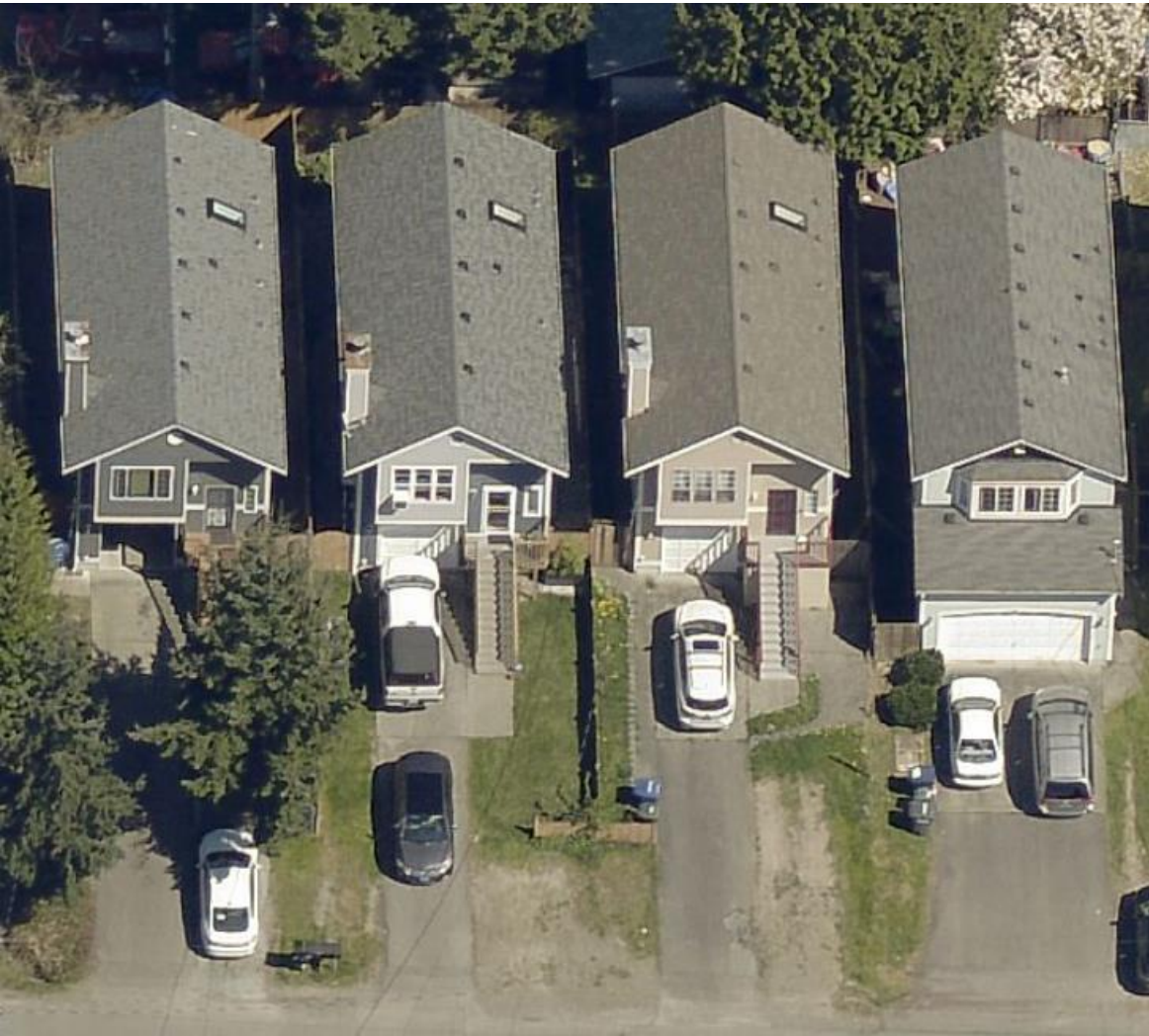
4 & 6 homes per acre (R-4 and R-6) - One home per lot





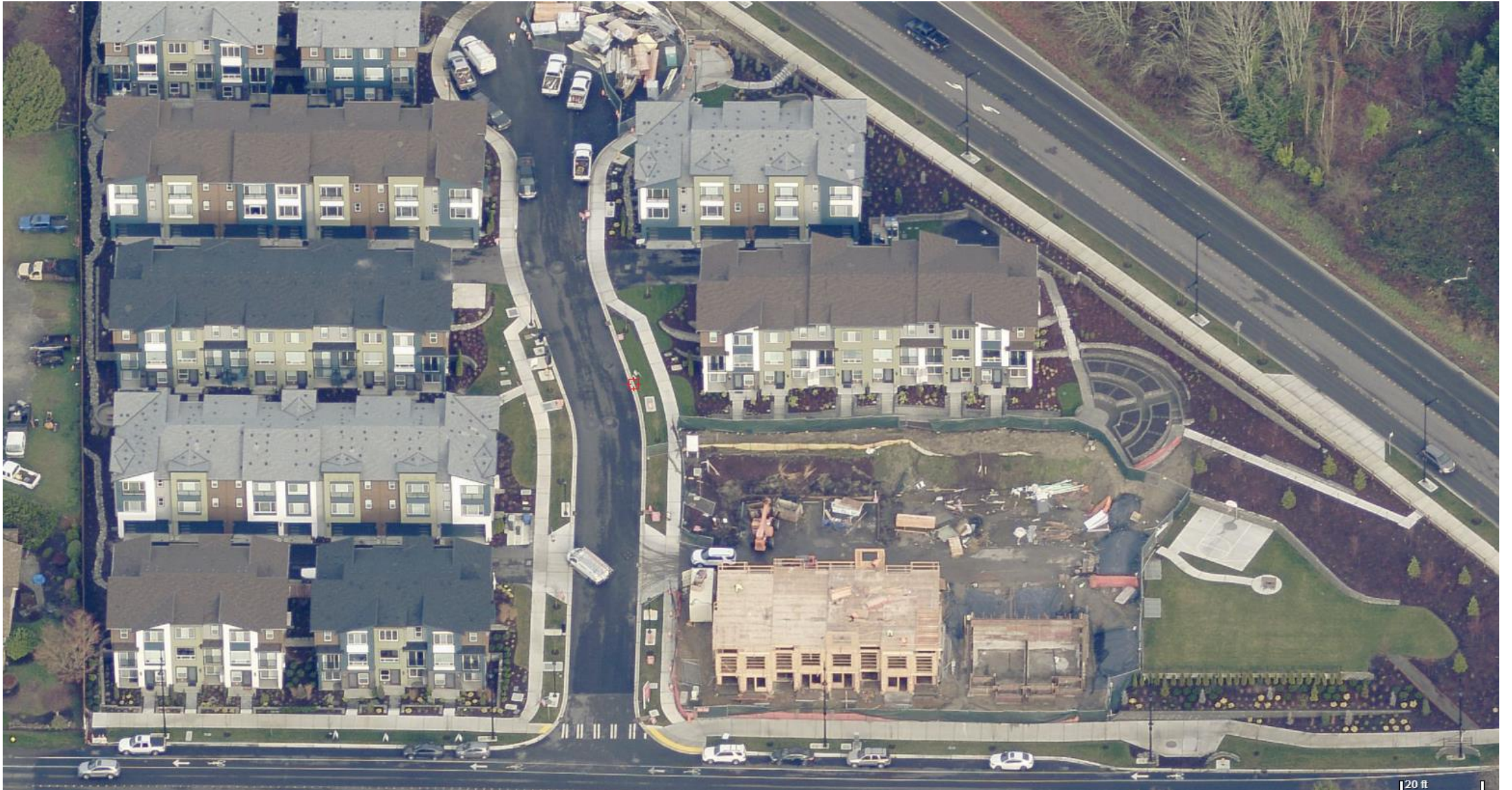
8 homes per acre (R-8) - Usually one home per lot on smaller lots





12 homes per acre (R-12) - One home per lot or duplex





18 homes per acre (R-18) - Townhomes or apartments





18 homes per acre (R-18) - Townhomes or apartments





24 homes per acre (R-24) – 3 and 4-story apartments





48 homes per acre (R-48) – 5 and 6-story apartments,  
with or without ground floor commercial space





Neighborhood Business (NB) – Limited retail and personal services, along with upstairs residential





## Neighborhood Business Example





**Community Business (CB) – Wide array of retail, services, and professional offices, high-density residential allowed upstairs.**





Mixed-Use Building Example – Allowed in Community Business Zone  
(Street Level Commercial, Apartments Above)





Mixed-Use Building Example – Allowed in Community Business Zone  
(Street Level Commercial, Apartments Above)





Not Very Pedestrian-Oriented





Not Pedestrian-Oriented





More Pedestrian-Oriented





Very Pedestrian-Oriented



# Stay informed



- Local Services website  
<https://kingcounty.gov/local-services>
- Email newsletter: **Unincorporated Area Community News** (subscribe on our home page)
- Instagram/Facebook **@kingcountylocalservices**
- Twitter (Road Services) **@kcroads**
- Facebook (Road Services) **@King County Roads**

## Contact us

- Email: **AskLocalServices@kingcounty.gov**
- Phone: **206-477-3800** (Relay 711) (Language interpreter available)

