

2022-2027

BOND

PROGRAM

City of San Antonio



PUBLIC WORKS

Nani Falcone Park

Public Input Meeting

September 5, 2023 | Presented by Public Works

Agenda

- Welcome and Introductions
- Project Information
- Consultant Presentation
- Public Comments & Questions

2022-2027

BOND

PROGRAM

City of San Antonio



PROPOSED 2022-2027

BOND PROGRAM

City of San Antonio



INFORMATION GUIDE



APPROVED

May 7, 2022



Nani Falcone Park

Project Staff & Design Team

- **Project Design Team:**
 - Studio Balcones: Jennifer Orr, Kat Mays, Allison Bodin

- **COSA Staff:**
 - Tony Forshage – Parks and Rec. Asst. Manager
 - Eric Reyna – Parks and Rec. – PM
 - Jamaal Moreno – Sr. Landscape Architect - PWD
 - Sean Duncan – Landscape Architect- PM -PWD



Nani Falcone Park

Project Scope

- 2022-2027 Bond Program
 - Under Proposition C: Parks, Recreation, and Open Space Improvements funded 82 projects totaling \$271.915 million
 - Project Funding for Nani Falcone: \$750,000
- Bond Language Scope:
 - General park improvements within available funding.



Nani Falcone Park

Project Background

- 2012-2017 Bond: Park received \$466,000 for general park improvements and parking expansion.
 - Final scope included a 44,000 square foot dog park, drinking fountain, trash receptacles, bike rack, new entry drive, new parking for 13 vehicles and overflow temporary turf parking for an additional 17 vehicles.
- 2017-2022 Bond: Park received \$250,000 for general park improvements.
 - Final scope included two shade canopies in the dog park with associated accessible walkway, 6 solar powered security lights in the existing parking lots along Mystic Park Drive, and wheel stops installed in the turf parking areas to help maximize parking efficiency.
- Other existing amenities include a Disc Golf Course, pavilion, educational overlook, playground, skate plaza, portable restrooms, and a 1.10 mi walking trail.

Nani Falcone Park

Meeting Purpose

■ Conceptual Plan

- This project includes a Conceptual Plan for the recently acquired 9-acres off Guilbeau Road which expands the park to 74.3 acres.
- A conceptual plan will help develop a community vision for the 9-acres that responds to the site's opportunities and constraints and that is complementary to the existing park.
- Help us develop a conceptual plan that illustrates the type and locations of improvements and amenities you would like to see in your park.

Nani Falcone Park

Trailhead at Guilbeau Road

- Phase 1 Development
 - 29 pervious parking stalls
 - Bioswale feature
 - Limestone seating
 - Water fountain
 - Bike repair station
 - Bike racks
 - Trash and recycle receptacles
 - Trail Signage
 - Landscaping
- Phase 2 development (unfunded)
 - 50 pervious parking stalls



2022-2027
BOND
PROGRAM
City of San Antonio

Nani Falcone Park

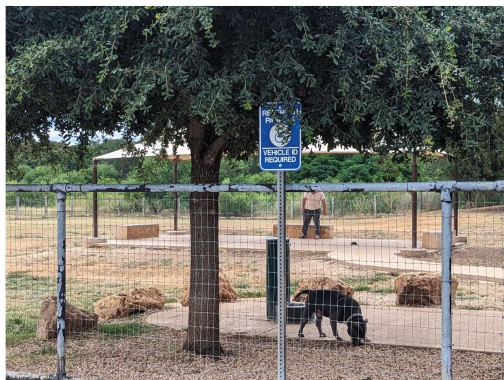
Existing Site Images



Skateboard Park



Dog Park (Small Dogs)



Dog Park (Large Dogs)



Parking next to Dog Park & Skateboard Park

2022-2027
BOND
PROGRAM
City of San Antonio

Nani Falcone Park

Existing Site Images



Pavilion near Playground



Playground



Seating



Trail around Park



Drainage Way through Park

Nani Falcone Park

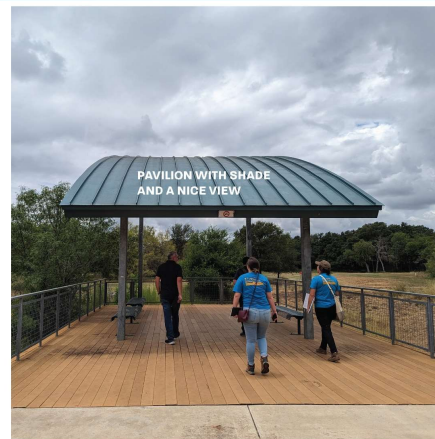
Existing Site Images



Grasses in Drainage way



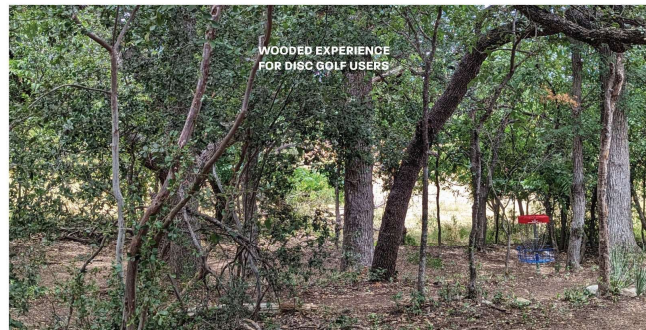
Typical trail condition around wooded areas.



Second Pavilion



Disc golf Hole #8



Disc golf Hole #9

2022-2027
BOND
PROGRAM
City of San Antonio

Nani Falcone Park

Existing Site Images



New Trail Head w/ Parking in construction



New Trail Head w/ Parking in construction



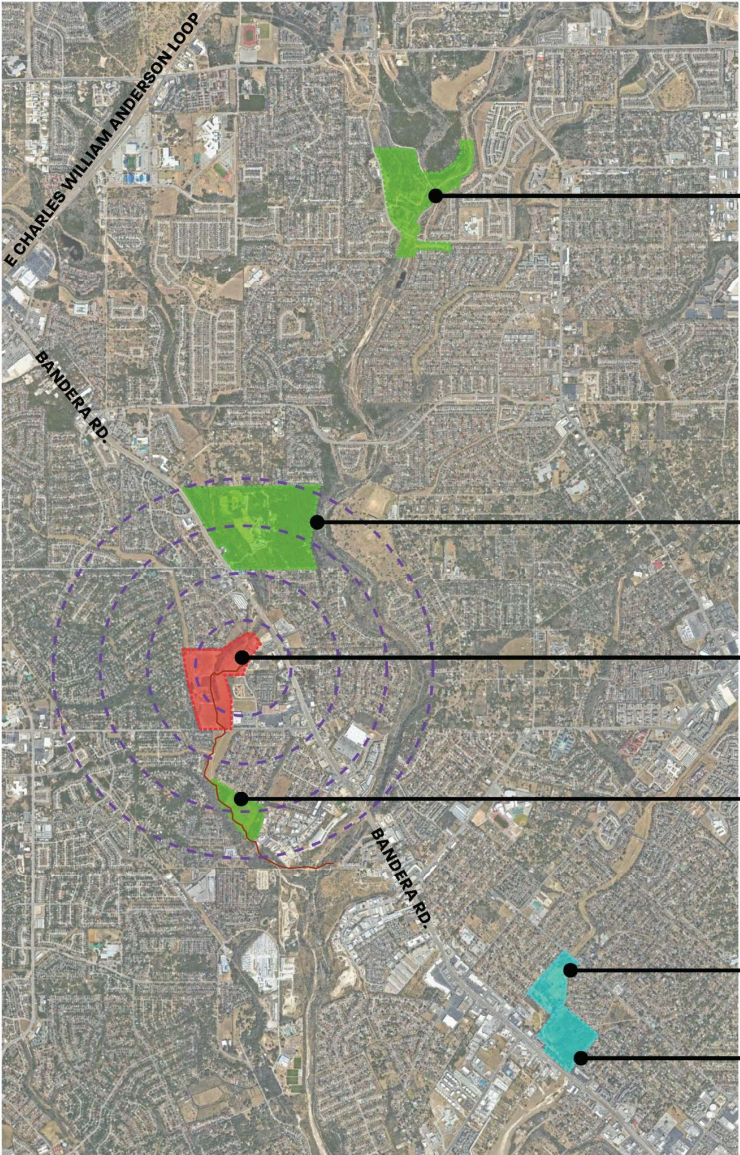
French Creek Greenway Trail

Nani Falcone Park

Existing Site Images



Existing Site Program & Nearby Parks



BAMBERGER PARK

- 15 MIN. DRIVE
- 19 MIN. BIKE

OP SCHNABEL PARK

- 5 MIN. DRIVE
- 9 MIN. BIKE

NANI FALCONE PARK

(PROJECT SITE & STARTING POINT)

FRENCH CREEK PARK

- 5 MIN. DRIVE
- 7 MIN. BIKE

RAYMOND RIMKUS PARK

- 8 MIN. DRIVE
- 25 MIN. BIKE

HUEBNER ONION NATURAL AREA PARK

- 9 MIN. DRIVE
- 25 MIN. BIKE

LEGEND

- Leon Valley Parkland
- City of San Antonio Parkland
- Project Site
- French Creek Trail
- 1/4 Mile Radius (10 Minute Walk Radius)

BAMBERGER PARK

- Playground
- Trails: 2.5 miles (total Length)

OP SCHNABEL PARK

- Playground
- Trails: 8.22 miles (total length)
- (2) Basketball Court
- Amenities
 - (2) Pavilions
 - YMCA (Payment Required)
 - Northside Suburban Little League (Payment Required)

FRENCH CREEK PARK

- Trails: 0.6 miles (total Length)

RAYMOND RIMKUS PARK

- (2) Playground
- Trails: 0.5 miles + 0.75 mile trails
- Soccer Field
- Softball Field
- Tennis Courts
- Basketball Court
- (2) Volley Ball Pit
- Amenities
 - (2) Pavilions

HUEBNER ONION NATURAL AREA PARK

- Trails: 0.9 miles (total Length)



Existing Site Program & Nearby Parks

NANI FALCONE PARK

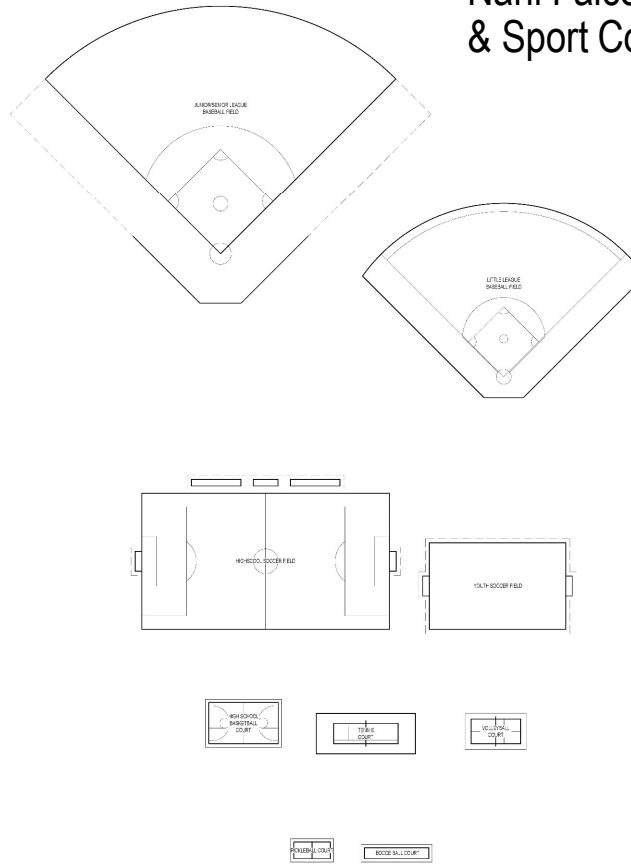
- Playground
- Trails: 1.1 miles (total Length)
- Baseball Field
- Dog Park
- Disc Golf (21 hole course)
- Skateboard Park
- Amenities
 - (2) Pavilions

Nani Falcone Park: Site Plan





NANI FALCONE PARK: SOUTH ENLARGEMENT PLAN
04.20.2023 SCALE: 1" = 40' 0"



NANI FALCONE PARK: SPORT COURT SIZE COMPARISON
04.20.2023 SCALE: 1" = 40' 0"





Nani Falcone Park

Project Schedule

- **CONCEPTUAL PLAN:** September 2024 – December 2024
- **DESIGN:** January 2024 – June 2025
- **BIDDING:** August 2025 – July 2025
- **CONSTRUCTION:** Jan 2026 – December 2026



Nani Falcone Park

Questions and Comments

QUESTIONS?

If you desire to be added to an e-mail list for project updates or future meeting announcements, please fill out the sign-in sheet.

Sean Duncan

Landscape Architect – Project Manager

(210)207-2875

Sean.duncan@sanantonio.gov

CONNECT WITH US!    
#SA2022Bond | www.sanantonio.gov/2022Bond