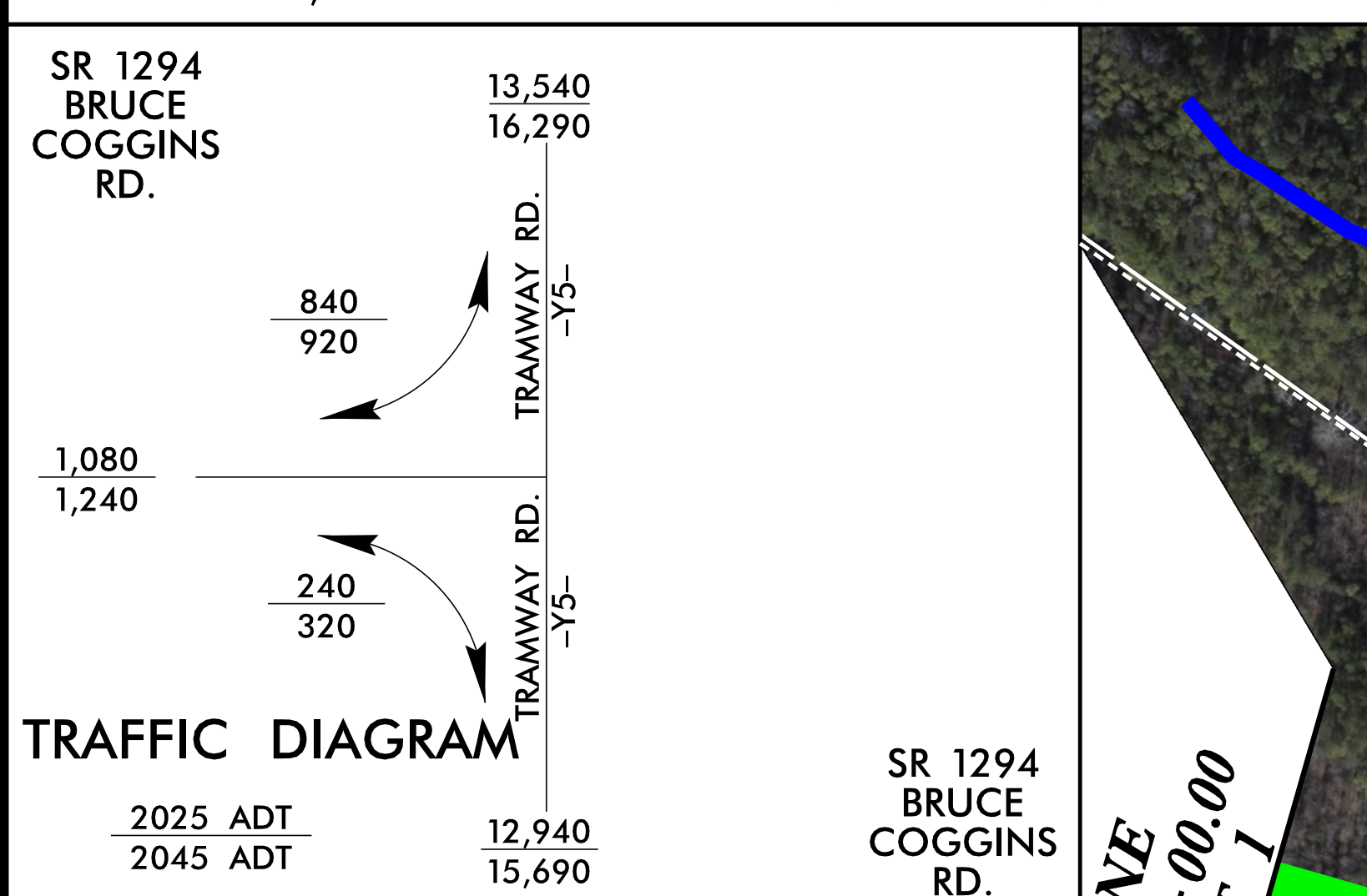


**DRIVEWAY NOTE:**  
DRIVEWAYS ARE NOT SHOWN AS MAPS ARE BASED ON PRELIMINARY PLANS AND ARE SUBJECT TO CHANGE. DRIVEWAY LOCATIONS WILL BE FINALIZED AT A LATER DATE.

**CONTROL OF ACCESS:**  
U-TURN BULB OUTS WILL BE FULL CONTROL OF ACCESS. NO DRIVEWAYS WILL BE PERMITTED WITHIN THESE AREAS.

**UTILITY INFORMATION:**  
TO PROVIDE GREATER VISUAL CLARITY, EXISTING AND PROPOSED UTILITIES ARE NOT SHOWN ON THESE MAPS OR ON OTHER DISPLAYS. THE UTILITY INFORMATION SHOWN ON THESE MAPS IS LIMITED TO LOCATIONS OF MAJOR EXISTING AND POTENTIAL UTILITY EASEMENTS. THE DESIGNS SHOWN ON THESE MAPS INCLUDING UTILITY EASEMENTS, ARE PRELIMINARY AND ARE SUBJECT TO CHANGE.

**PARTIAL CONTROL OF ACCESS:**  
PARTIAL CONTROL OF ACCESS IS DEFINED AS ONE ACCESS POINT PER PARCEL FOR PROPERTIES WITH LARGE ROAD FRONTAGES (FOR EXAMPLE, 2000 FEET OR MORE). AN ADDITIONAL ACCESS POINT MAY BE CONSIDERED FOR PROPERTIES THAT HAVE ACCESS, SUCH AS VIA A SIDE ROAD, ACCESS TO US 1-15-501 MAY BE ELIMINATED.



# PUBLIC MEETING MAP

## PROJECT U-5727 LEE COUNTY

### US 1-15-501 FROM SOUTH OF SR 1198 (BRYAN DRIVE) TO NORTH OF SR 1237 (CARTHAGE STREET) ALTERNATIVE 2 (PREFERRED) SHEET 2 OF 2

1" = 100'

PRELIMINARY PLANS  
DO NOT USE FOR CONSTRUCTION

INCOMPLETE PLANS  
DO NOT USE FOR R/W ACQUISITION

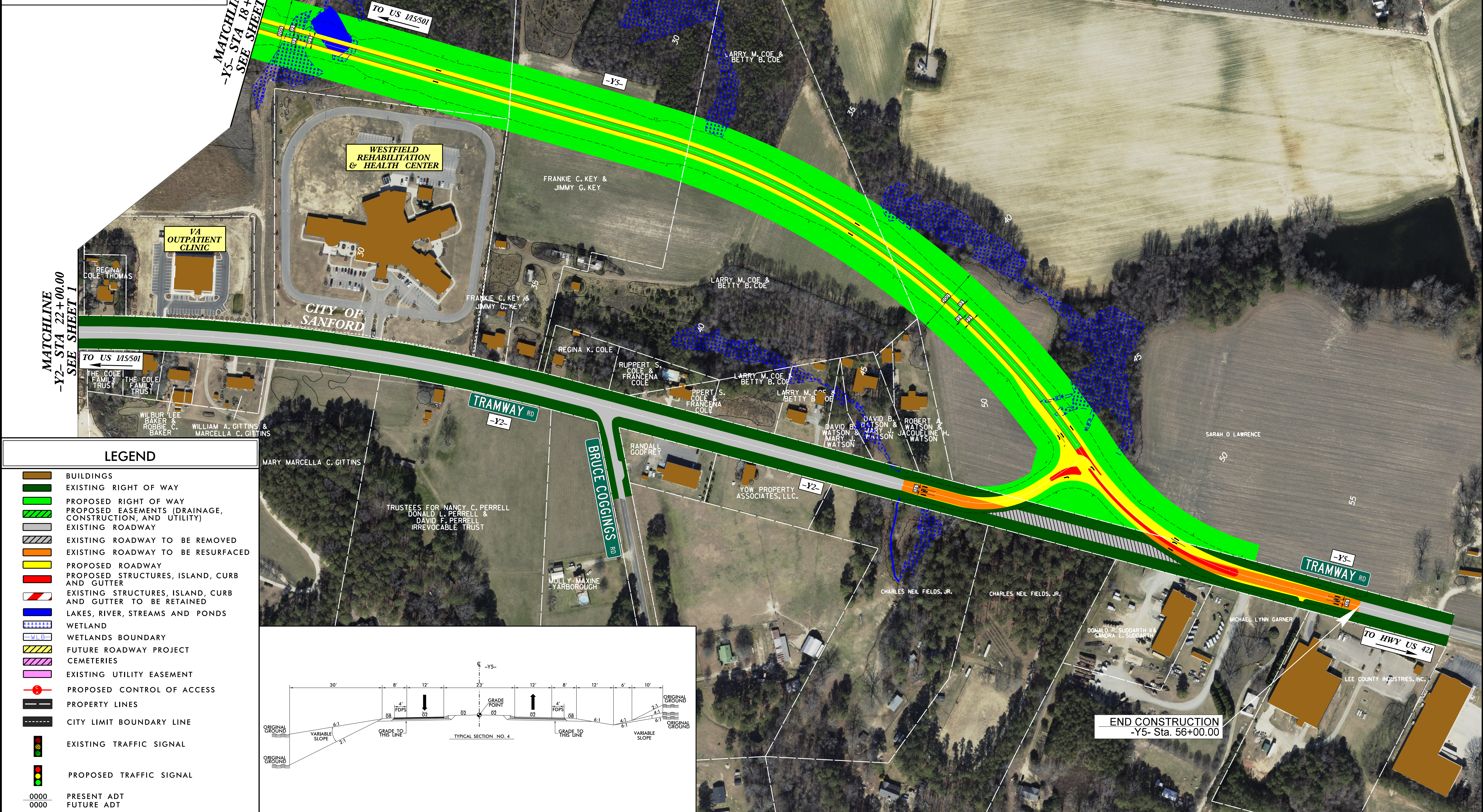
**DESIGN DATA**

FUNCTIONAL CLASS: PRINCIPAL ARTERIAL  
DESIGN SPEED: 50/60 MPH  
MAXIMUM SUPERELEVATION: 8%

DATE OF ORTHOPHOTOGRAPHY: 2017  
SOURCE OF ORTHOPHOTOGRAPHY: NCONEMAP

**PUBLIC MEETING MAP**  
PROJECT U-5727  
LEE COUNTY  
US 1-15-501 FROM SOUTH OF SR 1198 (BRYAN DRIVE) TO NORTH OF SR 1237 (CARTHAGE STREET)  
ALTERNATIVE 2 (PREFERRED)  
SHEET 2 OF 2

**PUBLIC MEETING MAP**  
PROJECT U-5727  
LEE COUNTY  
US 1-15-501 FROM SOUTH OF SR 1198 (BRYAN DRIVE) TO NORTH OF SR 1237 (CARTHAGE STREET)  
ALTERNATIVE 2 (PREFERRED)  
SHEET 2 OF 2



END CONSTRUCTION  
-Y5- Sta. 56+00.00