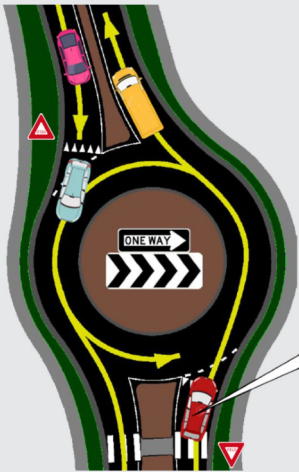
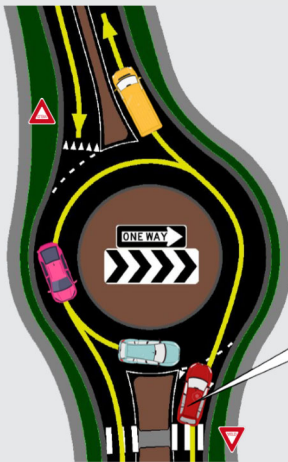


# Driving the Mini-Roundabout at Karl Road



Safe to enter circle. Gap in traffic.

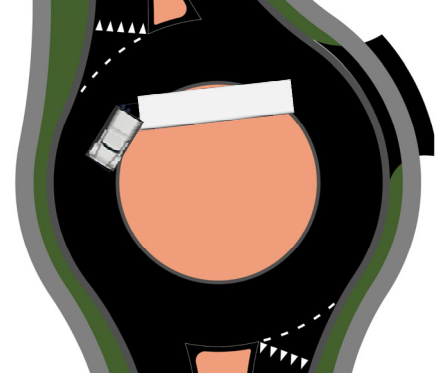
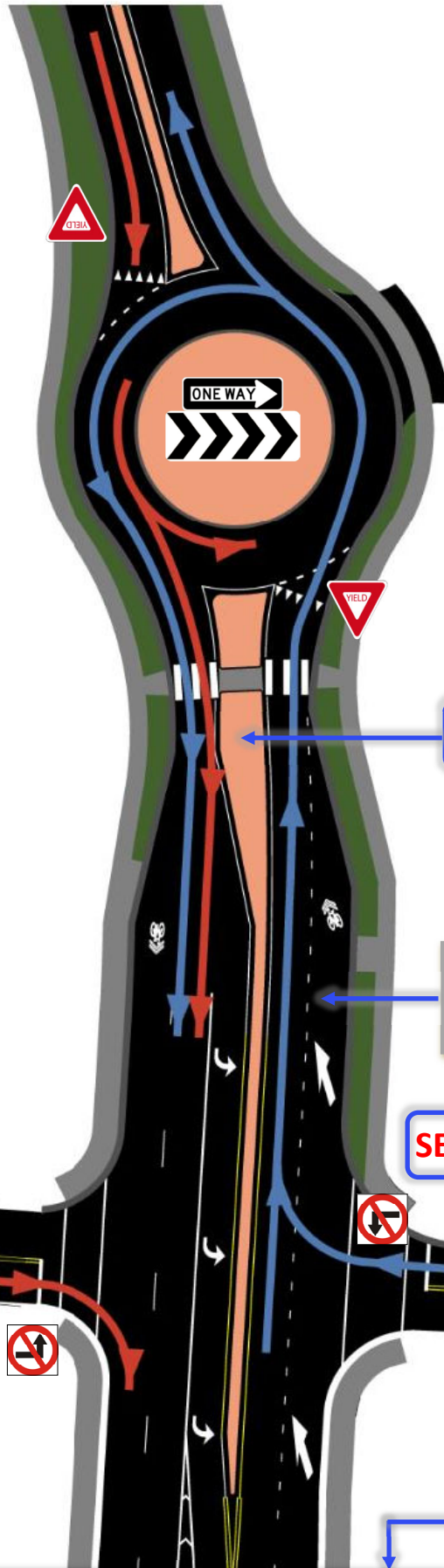


Do not enter circle. No gap in traffic.

Before entering the circle, look to your left to see if any cars are already in the roundabout. When you see a gap in the traffic, you can safely enter the circle. Exit the circle at you desired location.



No left turn at Service Road.



Trucks and large vehicles may use the brick center island if necessary when driving through the mini-roundabout.



Roundabout ahead. Slow down when you see this sign.



Yield to pedestrians at crosswalks.



To travel southbound on Karl Road from the Service Road, use the mini-roundabout to make a U-turn.



When entering the roundabout, yield to traffic circulating in the roundabout.