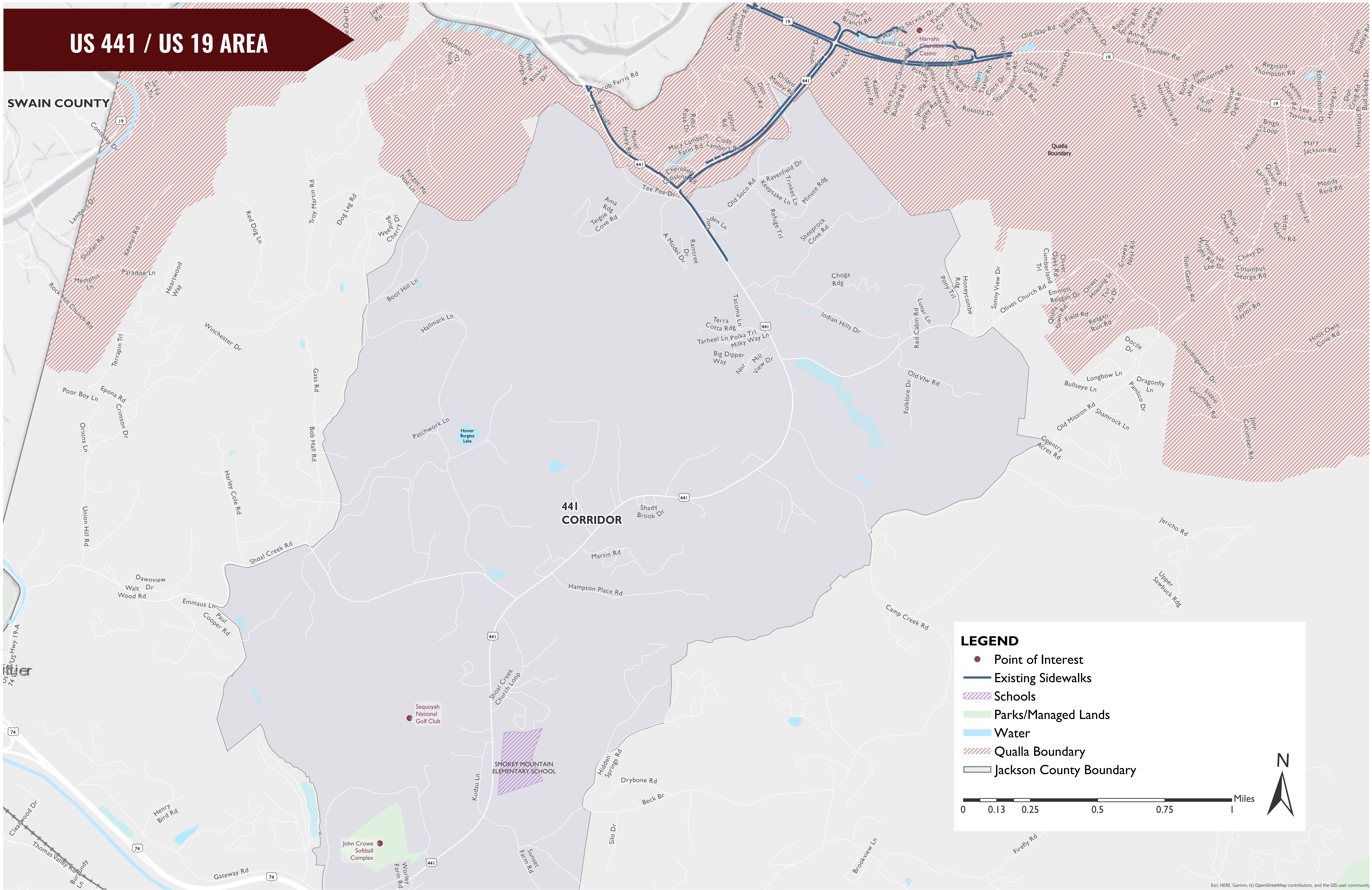


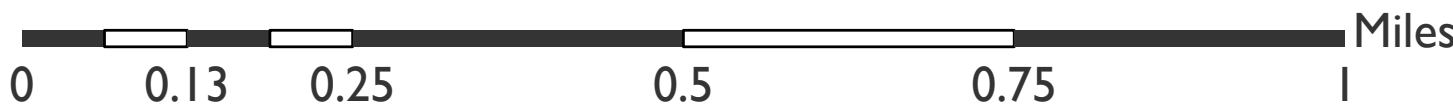
US 441 / US 19 AREA

SWAIN COUNTY

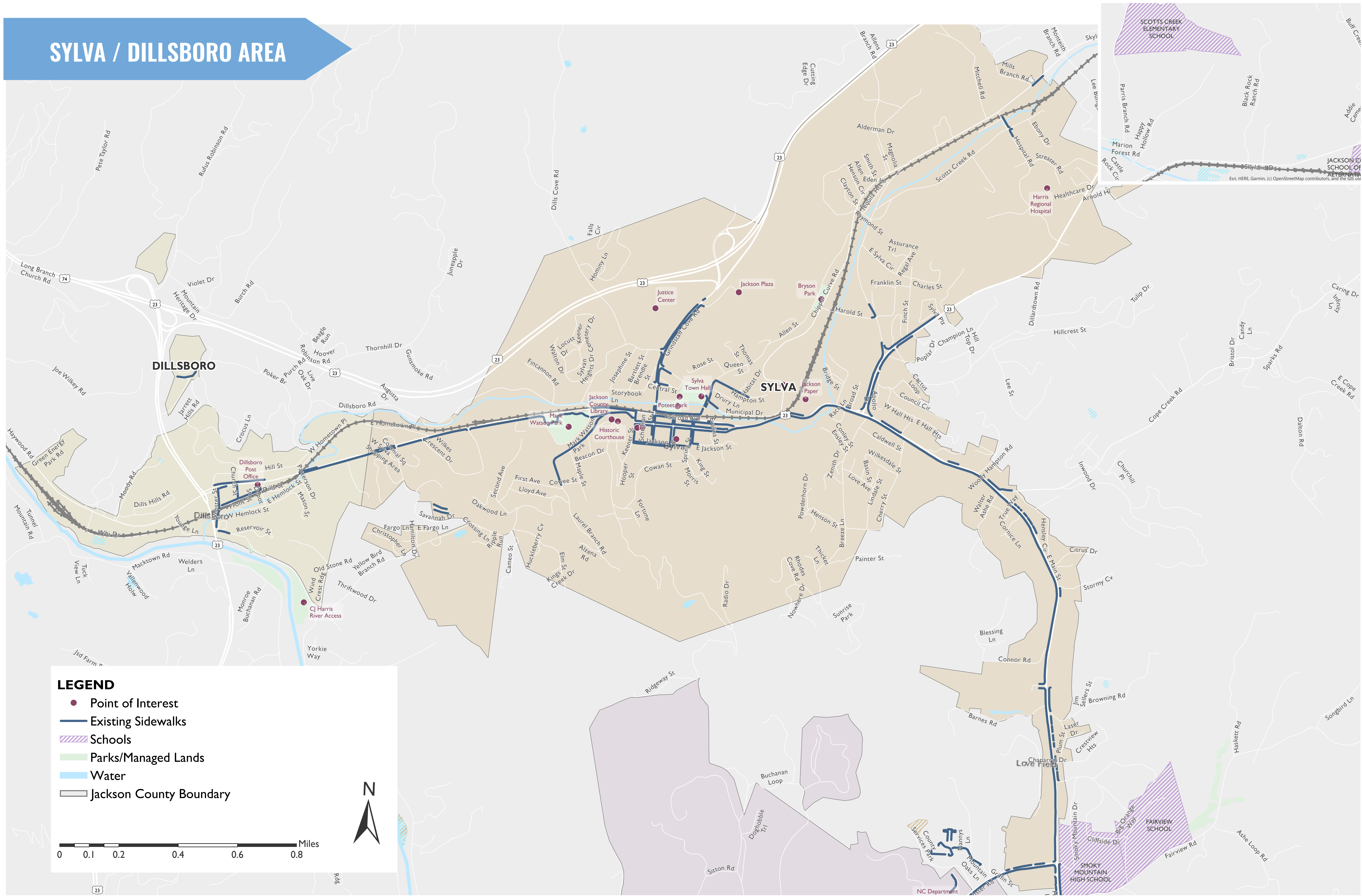


LEGEND

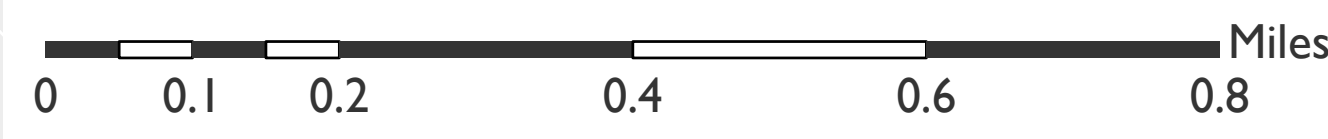
- Point of Interest
- Existing Sidewalks
- ▨ Schools
- ▨ Parks/Managed Lands
- ▨ Water
- ▨ Qualla Boundary
- ▨ Jackson County Boundary



SYLVA / DILLSBORO AREA

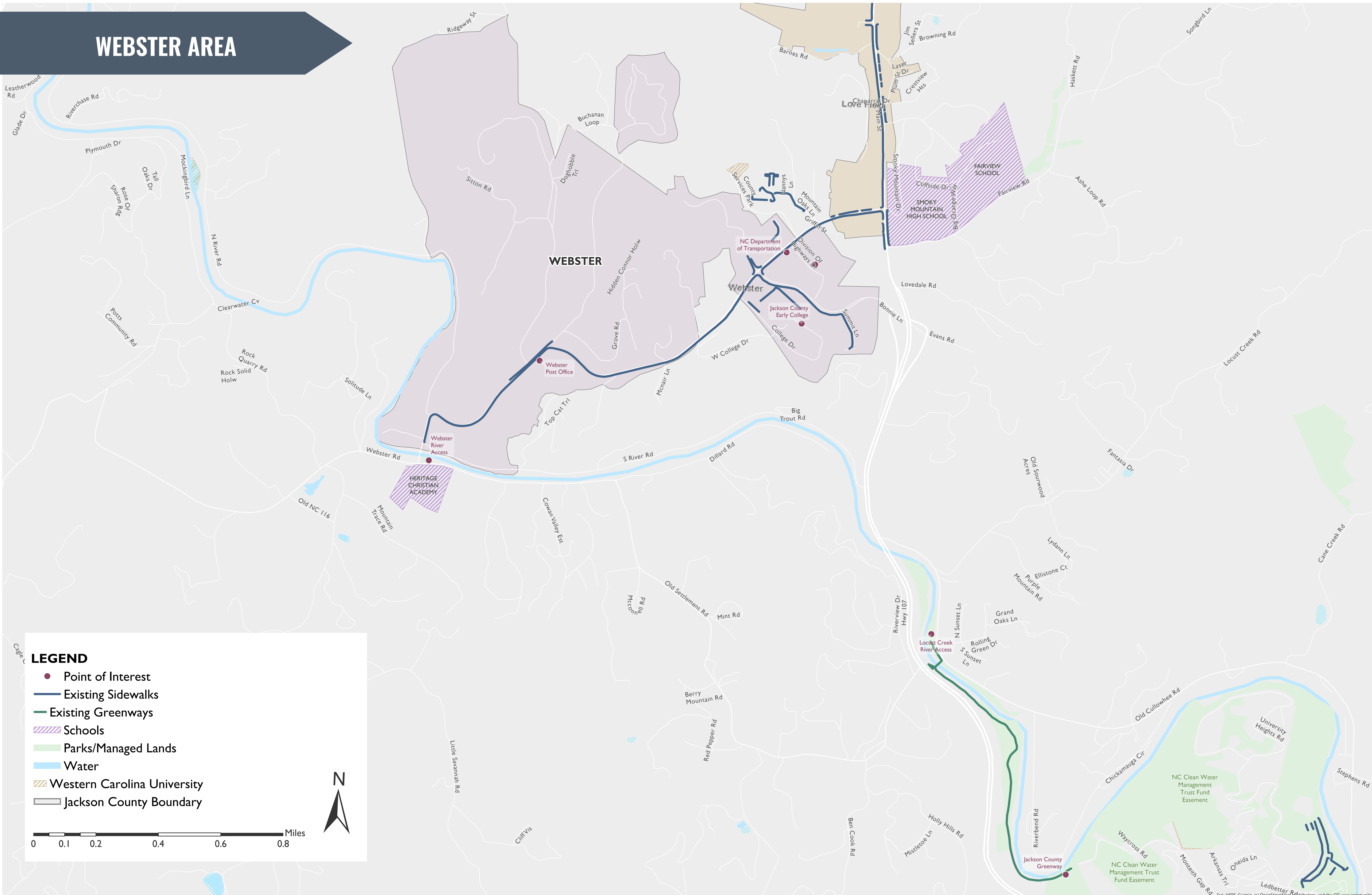


- LEGEND**
- Point of Interest
 - Existing Sidewalks
 - ▨ Schools
 - ▨ Parks/Managed Lands
 - ▨ Water
 - ▭ Jackson County Boundary

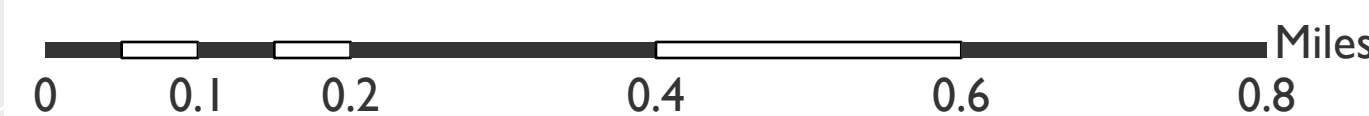


Map data by Esri, HERE, Garmin, (c) OpenStreetMap contributors, and The GIS User Community

WEBSTER AREA



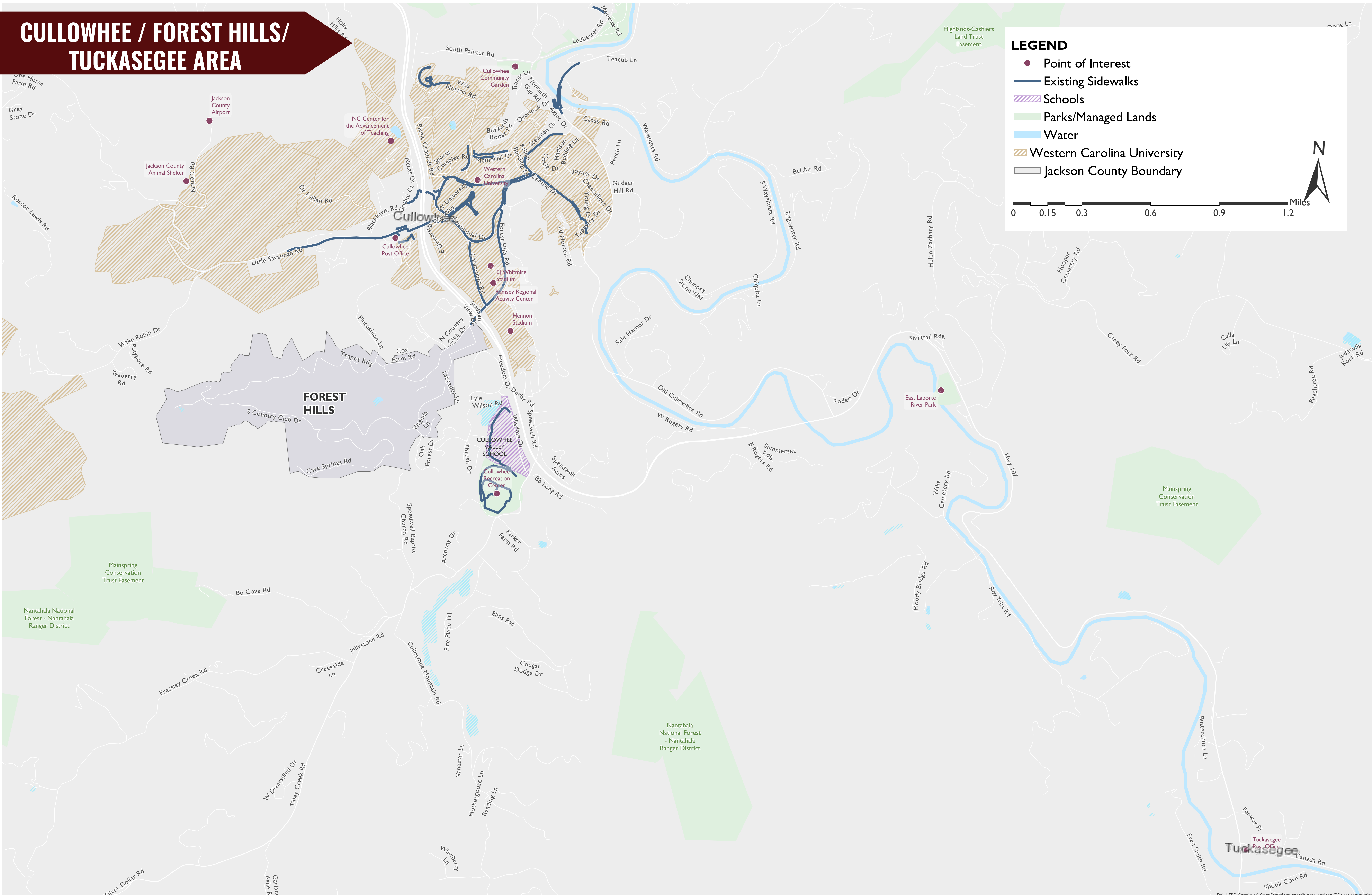
- LEGEND**
- Point of Interest
 - Existing Sidewalks
 - Existing Greenways
 - ▨ Schools
 - ▨ Parks/Managed Lands
 - ▨ Water
 - ▨ Western Carolina University
 - ▨ Jackson County Boundary



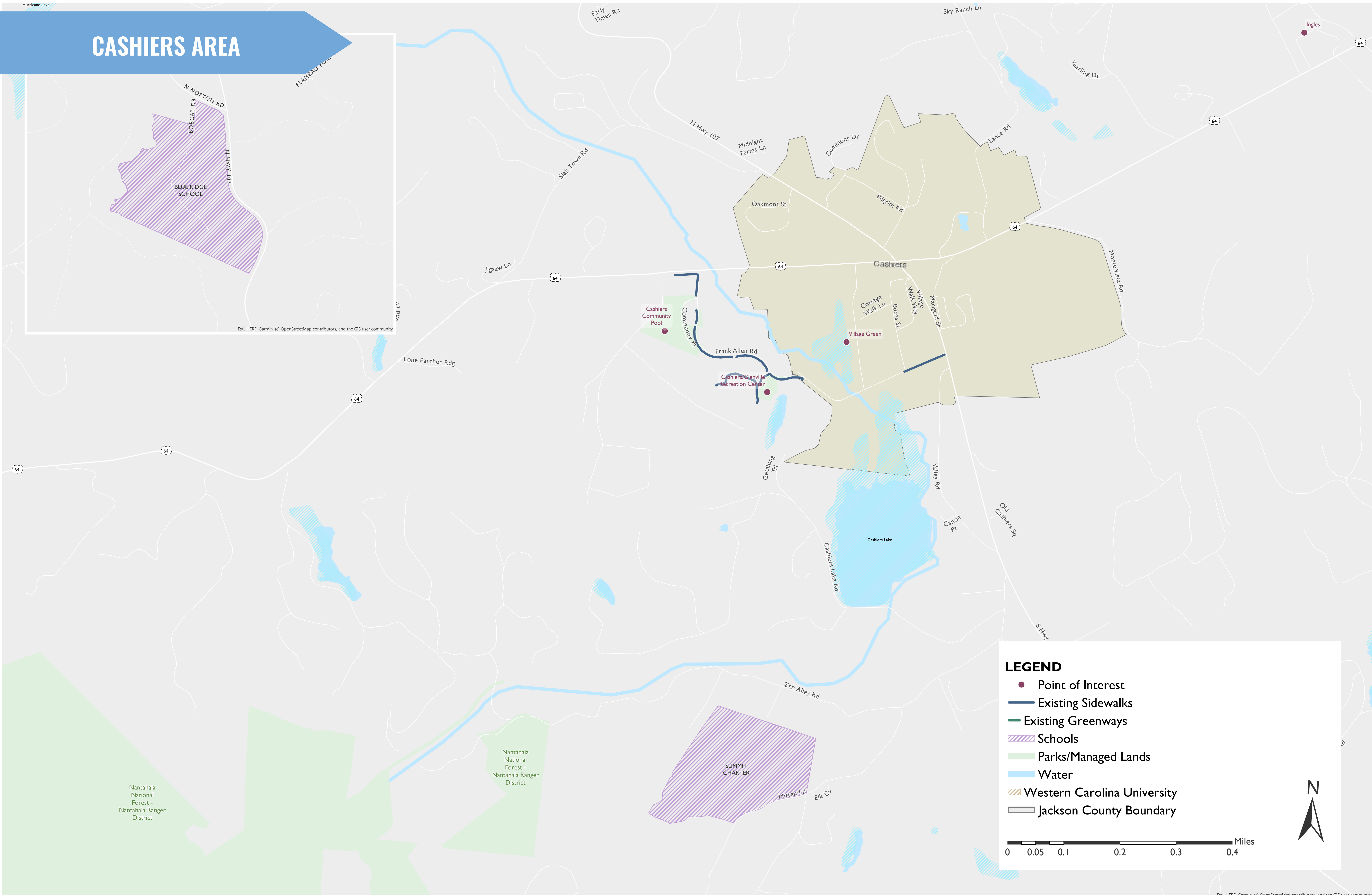
CULLOWHEE / FOREST HILLS / TUCKASEGEE AREA

LEGEND

- Point of Interest
- Existing Sidewalks
- Schools
- Parks/Managed Lands
- Water
- Western Carolina University
- Jackson County Boundary



CASHIERS AREA



Esri, HERE, Garmin, (c) OpenStreetMap contributors, and the GIS user community

Esri, HERE, Garmin, (c) OpenStreetMap contributors, and the GIS user community

LEGEND

- Point of Interest
- Existing Sidewalks
- Existing Greenways
- ▨ Schools
- ▨ Parks/Managed Lands
- ▨ Water
- ▨ Western Carolina University
- ▨ Jackson County Boundary

