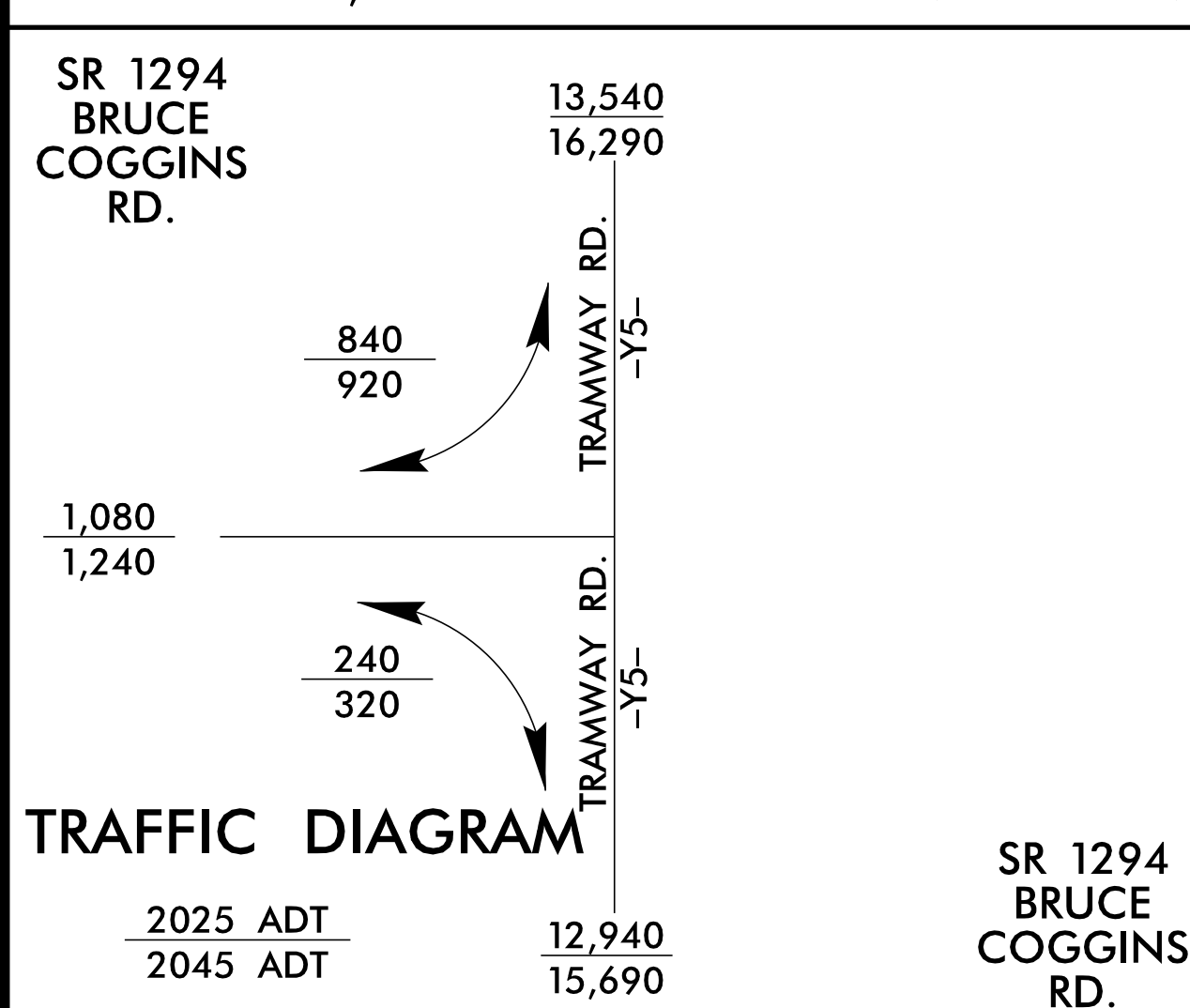


DRIVEWAY NOTE:
DRIVEWAYS ARE NOT SHOWN AS MAPS ARE BASED ON PRELIMINARY PLANS AND ARE SUBJECT TO CHANGE. DRIVEWAY LOCATIONS WILL BE FINALIZED AT A LATER DATE.

CONTROL OF ACCESS:
U-TURN BULB OUTS WILL BE FULL CONTROL OF ACCESS. NO DRIVEWAYS WILL BE PERMITTED WITHIN THESE AREAS.

UTILITY INFORMATION:
TO PROVIDE GREATER VISUAL CLARITY, EXISTING AND PROPOSED UTILITIES ARE NOT SHOWN ON THESE MAPS OR ON OTHER DISPLAYS. THE UTILITY INFORMATION SHOWN ON THESE MAPS IS LIMITED TO LOCATIONS OF MAJOR EXISTING AND POTENTIAL UTILITY EASEMENTS. THE DESIGNS SHOWN ON THESE MAPS INCLUDING UTILITY EASEMENTS, ARE PRELIMINARY AND ARE SUBJECT TO CHANGE.

PARTIAL CONTROL OF ACCESS:
PARTIAL CONTROL OF ACCESS IS DEFINED AS ONE ACCESS POINT PER PARCEL FOR PROPERTIES WITH LARGE ROAD FRONTAGES (FOR EXAMPLE, 2000 FEET OR MORE). AN ADDITIONAL ACCESS POINT MAY BE CONSIDERED FOR PROPERTIES THAT HAVE ACCESS, SUCH AS VIA A SIDE ROAD, ACCESS TO US 1-15-501 MAY BE ELIMINATED.



PUBLIC MEETING MAP

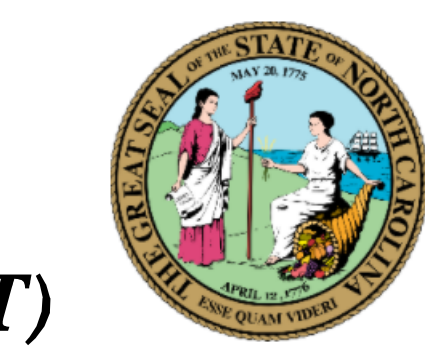
PROJECT U-5727

LEE COUNTY

US 1-15-501 FROM SOUTH OF SR 1198 (BRYAN DRIVE) TO NORTH OF SR 1237 (CARTHAGE STREET)

ALTERNATIVE 1

SHEET 2 OF 2



1" = 100'

PRELIMINARY PLANS
DO NOT USE FOR CONSTRUCTION

INCOMPLETE PLANS
DO NOT USE FOR A.C. ACQUISITION

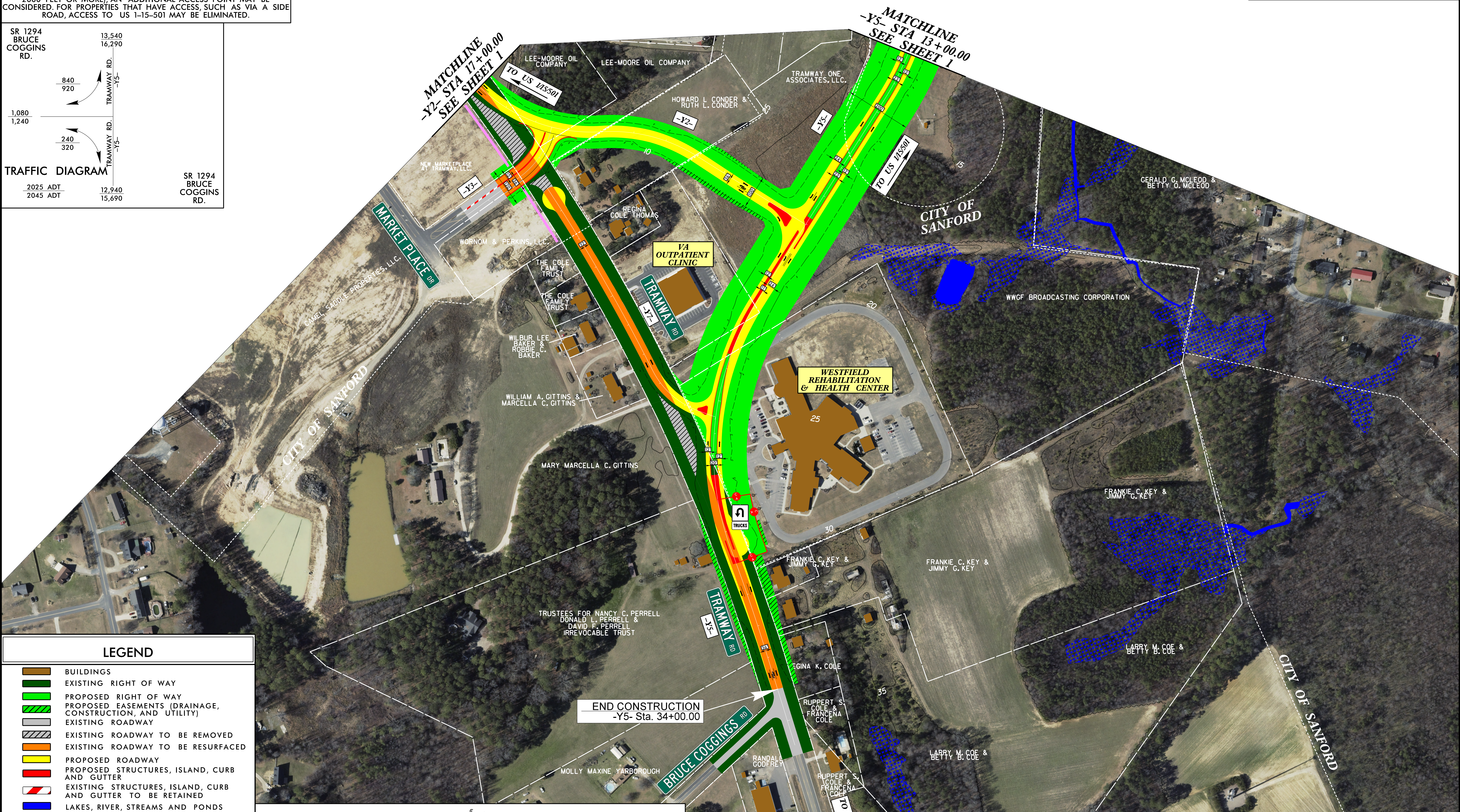
DESIGN DATA

FUNCTIONAL CLASS: PRINCIPAL ARTERIAL
DESIGN SPEED: 50/60 MPH
MAXIMUM SUPERELEVATION: 8%

DATE OF ORTHOPHOTOGRAPHY: 2017
SOURCE OF ORTHOPHOTOGRAPHY: NCONEMAP

PUBLIC MEETING MAP
 PROJECT U-5727
LEE COUNTY
 US 1-15-501 FROM SOUTH OF SR 1198 (BRYAN DRIVE) TO NORTH OF SR 1237 (CARTHAGE STREET)
 ALTERNATIVE 1
 SHEET 2 OF 2

PUBLIC MEETING MAP
 PROJECT U-5727
LEE COUNTY
 US 1-15-501 FROM SOUTH OF SR 1198 (BRYAN DRIVE) TO NORTH OF SR 1237 (CARTHAGE STREET)
 ALTERNATIVE 1
 SHEET 2 OF 2



LEGEND

	BUILDINGS
	EXISTING RIGHT OF WAY
	PROPOSED RIGHT OF WAY
	PROPOSED EASEMENTS (DRAINAGE, CONSTRUCTION, AND UTILITY)
	EXISTING ROADWAY
	EXISTING ROADWAY TO BE REMOVED
	EXISTING ROADWAY TO BE RESURFACED
	PROPOSED ROADWAY
	PROPOSED STRUCTURES, ISLAND, CURB AND GUTTER
	EXISTING STRUCTURES, ISLAND, CURB AND GUTTER TO BE RETAINED
	LAKES, RIVER, STREAMS AND PONDS
	WETLAND
	WETLANDS BOUNDARY
	FUTURE ROADWAY PROJECT
	CEMETERIES
	EXISTING UTILITY EASEMENT
	PROPOSED CONTROL OF ACCESS
	PROPERTY LINES
	CITY LIMIT BOUNDARY LINE
	EXISTING TRAFFIC SIGNAL
	PROPOSED TRAFFIC SIGNAL
	0000 PRESENT ADT
	0000 FUTURE ADT

