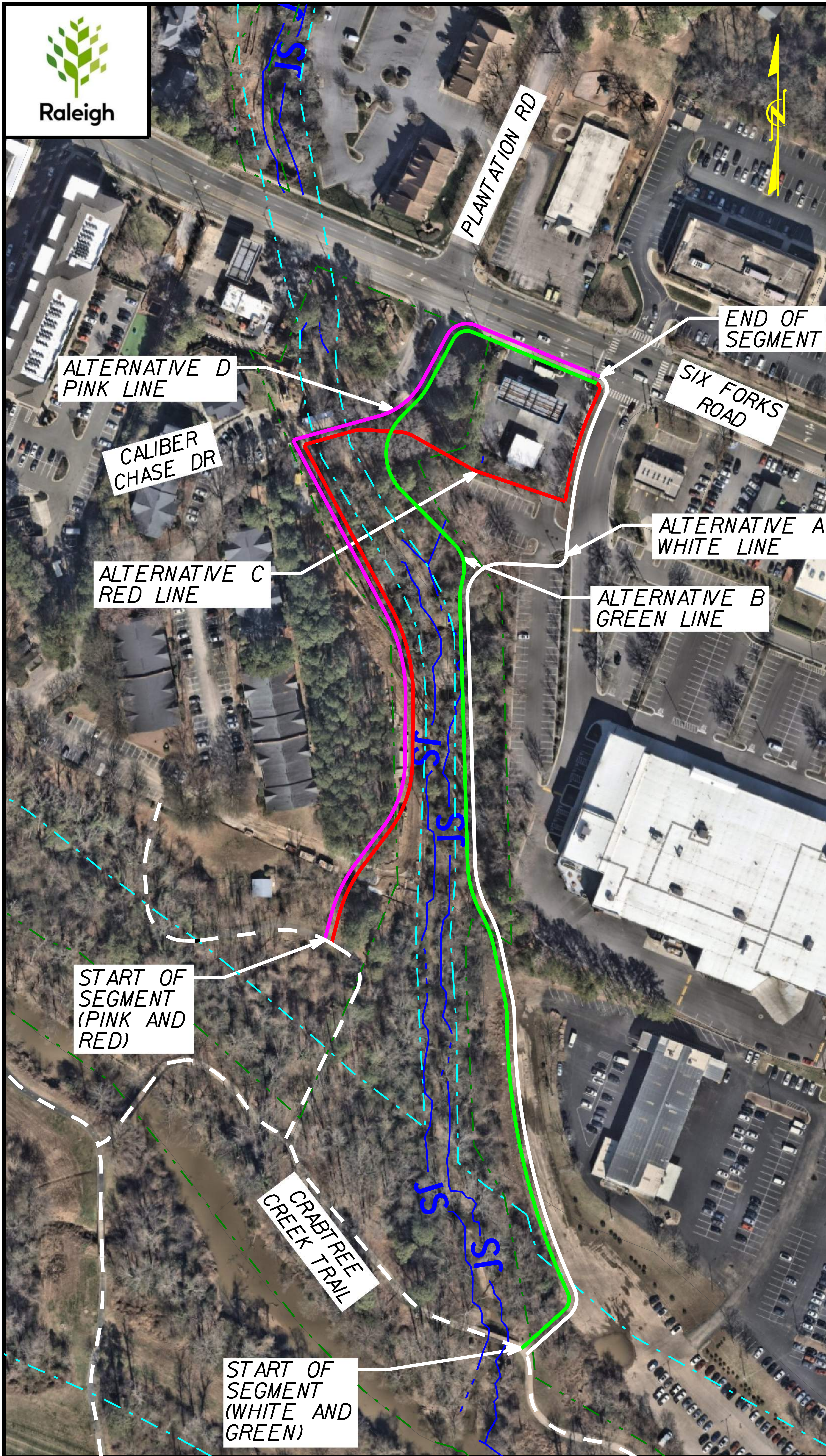




Raleigh



Segment 1A - Crabtree Creek Trail to Six Forks Road

Alternative A (White) - \$\$

- Advantages
 - No crossing of Big Branch Creek
 - 550' within wooded areas near Big Branch
 - 500' within greenway easement
- Challenges
 - 500' along parking lot
 - Will navigate Targan parking lot

Alternative B (Green) - \$\$\$\$

- Advantages
 - Avoids crossing Targan parking lot
 - 800' within wooded areas near Big Branch
 - 900' within greenway easement
- Challenges
 - Requires a crossing of a Big Branch tributary
 - Removal of trees along Caliber Chase Drive

Alternative C (Red) - \$\$\$

- Advantages
 - Direct connection to apartment complex
 - 950' within wooded areas near Big Branch
 - May be able to use newly cleared areas along sewer easement
 - 800' within greenway easement
- Challenges
 - Requires a crossing of Big Branch (culvert extension likely)
 - Removal of trees along Caliber Chase Drive

Alternative D (Pink) - \$\$\$

- Advantages
 - Direct connection to apartment complex
 - 950' within wooded areas near Big Branch
 - 850' within greenway easement
- Challenges
 - Requires a crossing of Big Branch (culvert extension likely)
 - Removal of trees along Caliber Chase Drive

EXISTING GREENWAY

EXISTING GREENWAY EASEMENT

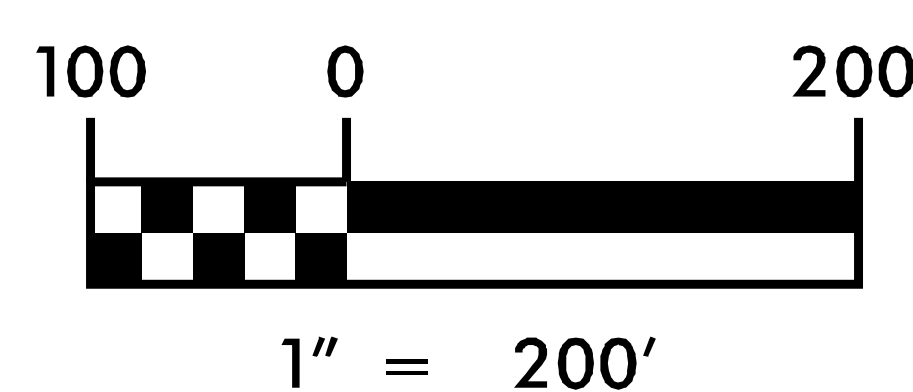
JURISDICTIONAL STREAM

FEMA FLOODWAY

Kimley»Horn

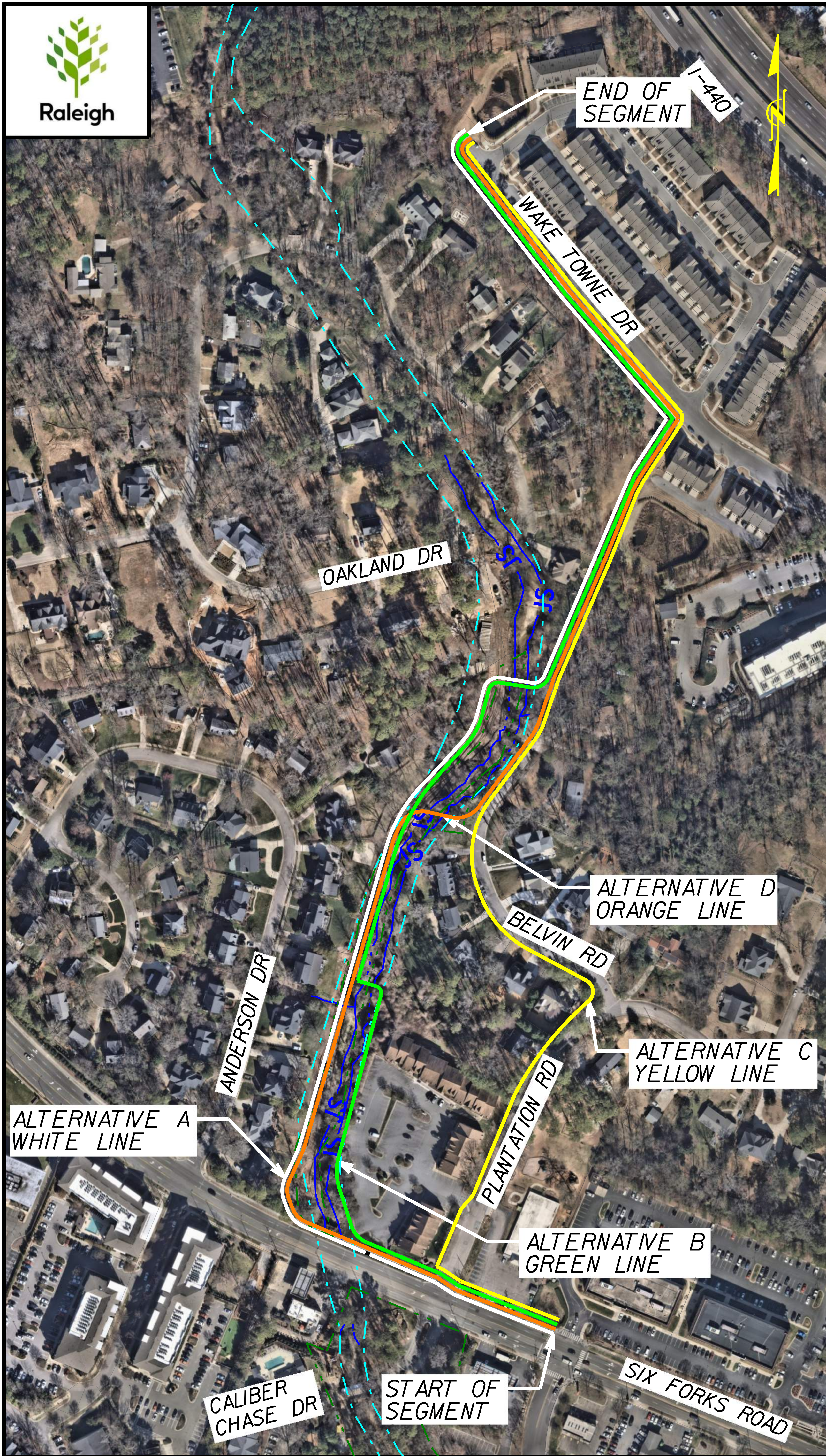
PREPARED BY:
421 FAYETTEVILLE STREET, SUITE 600
RALEIGH, NC 27601
PHONE: (919) 677-2000
FAX: (919) 677-2050 PE NO. F-0102

BIG BRANCH
GREENWAY CONNECTOR
SEGMENT 1A





Raleigh



Segment 1B - Six Forks Road to Wake Towne Drive

Alternative A (White) - \$\$



- Advantages
 - 1825' in wooded areas
 - Uses Six Forks to cross Big Branch
 - 1400' within greenway easement
- Challenges
 - One crossing of Big Branch on structure
 - Close proximity to 12 Homes

Alternative B (Green) - \$\$\$



- Advantages
 - 1525' in wooded areas
 - 750' within greenway easement
- Challenges
 - 2 crossings of Big Branch on structure
 - Likely needs 520' of boardwalk along parking lot
 - Close Proximity to 7 Homes

Alternative C (Yellow) - \$\$



- Advantages
 - 650' in wooded areas
 - No crossings of Big Branch
- Challenges
 - Streetside for 1325'
 - Not within greenway easement
 - Close proximity to 9 Homes

Alternative D (Orange) - \$\$



- Advantages
 - 1600' in wooded areas
 - Avoids additional residential property impacts by connecting to Belvin Rd
 - 1000' within greenway easement
- Challenges
 - Cross Big Branch on structure alongside SF home
 - Close proximity to 11 Homes

--- EXISTING GREENWAY EASEMENT

— JS — JURISDICTIONAL STREAM

- - - FEMA FLOODWAY

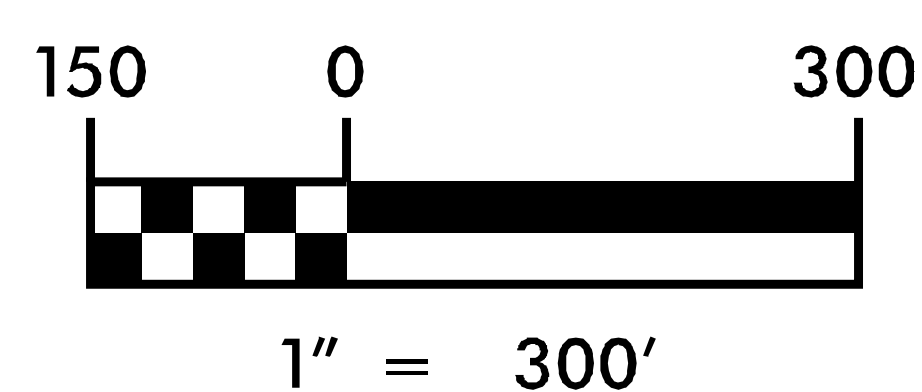
PREPARED BY:

Kimley»Horn

421 FAYETTEVILLE STREET, SUITE 600
RALEIGH, NC 27601
PHONE: (919) 677-2000
FAX: (919) 677-2050

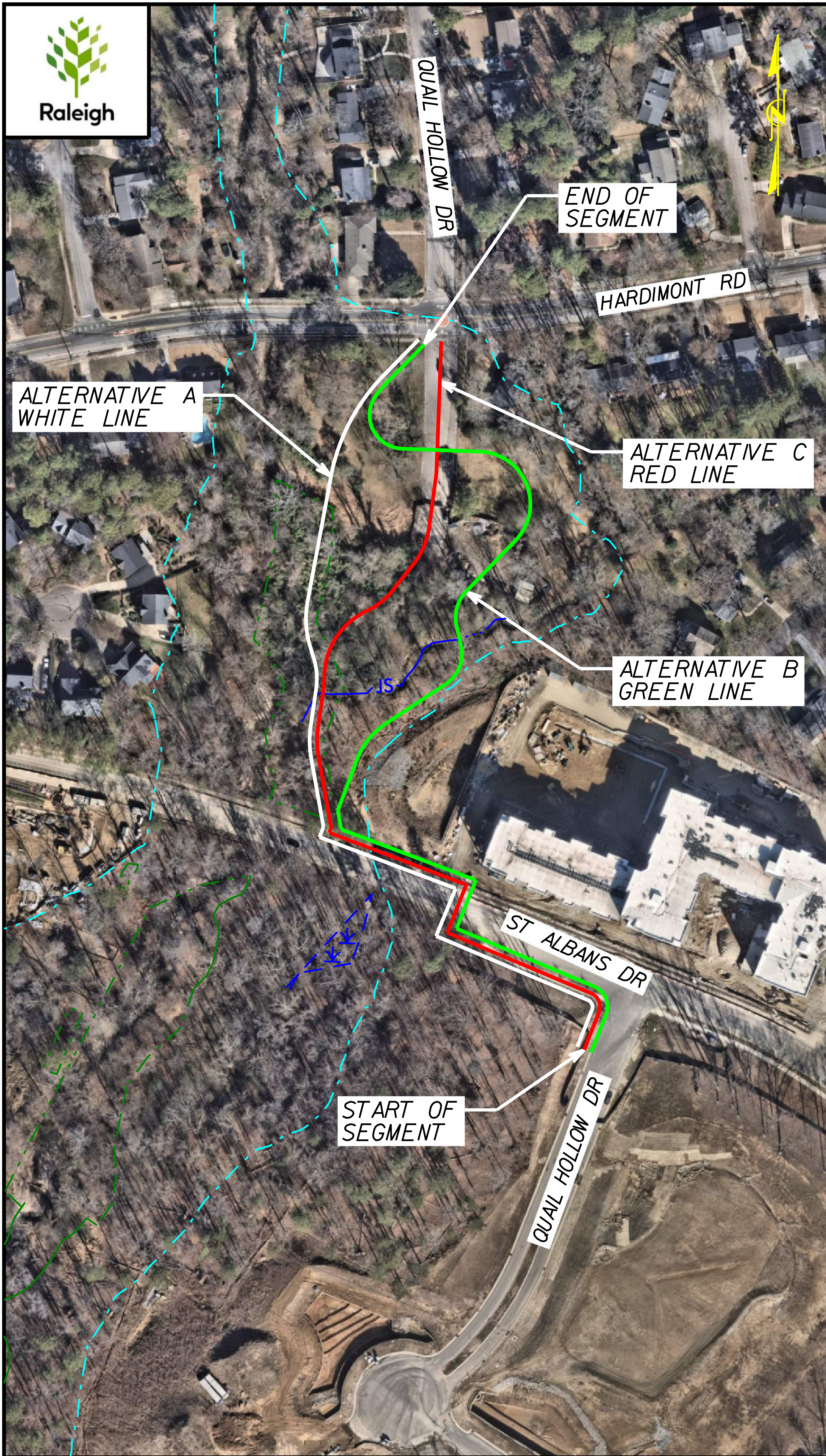
PE NO. F-0102

BIG BRANCH
GREENWAY CONNECTOR
SEGMENT 1B





Raleigh



Segment 4: St Albans Drive to Hardimont Road

Alternative A (White) - \$\$

- Advantages
 - 450' in wooded areas
 - 230' in park areas
 - 450' within greenway easement

- Challenges
 - One crossing of Big Branch tributary on structure

Alternative B (Green) - \$\$

- Advantages
 - 525' in wooded areas
 - 425' in park areas

- Challenges
 - One crossing of Big Branch tributary on structure
 - Not within greenway easement

Alternative C (Red) - \$\$

- Advantages
 - 425' in wooded areas
 - 200' within greenway easement

- Challenges
 - One crossing of Big Branch tributary on structure
 - Uses existing roadbed

JURISDICTIONAL WETLAND

EXISTING GREENWAY EASEMENT

JURISDICTIONAL STREAM

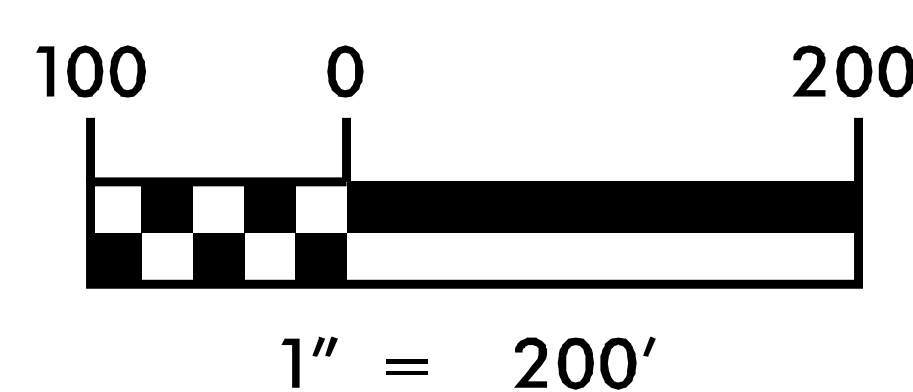
FEMA FLOODWAY

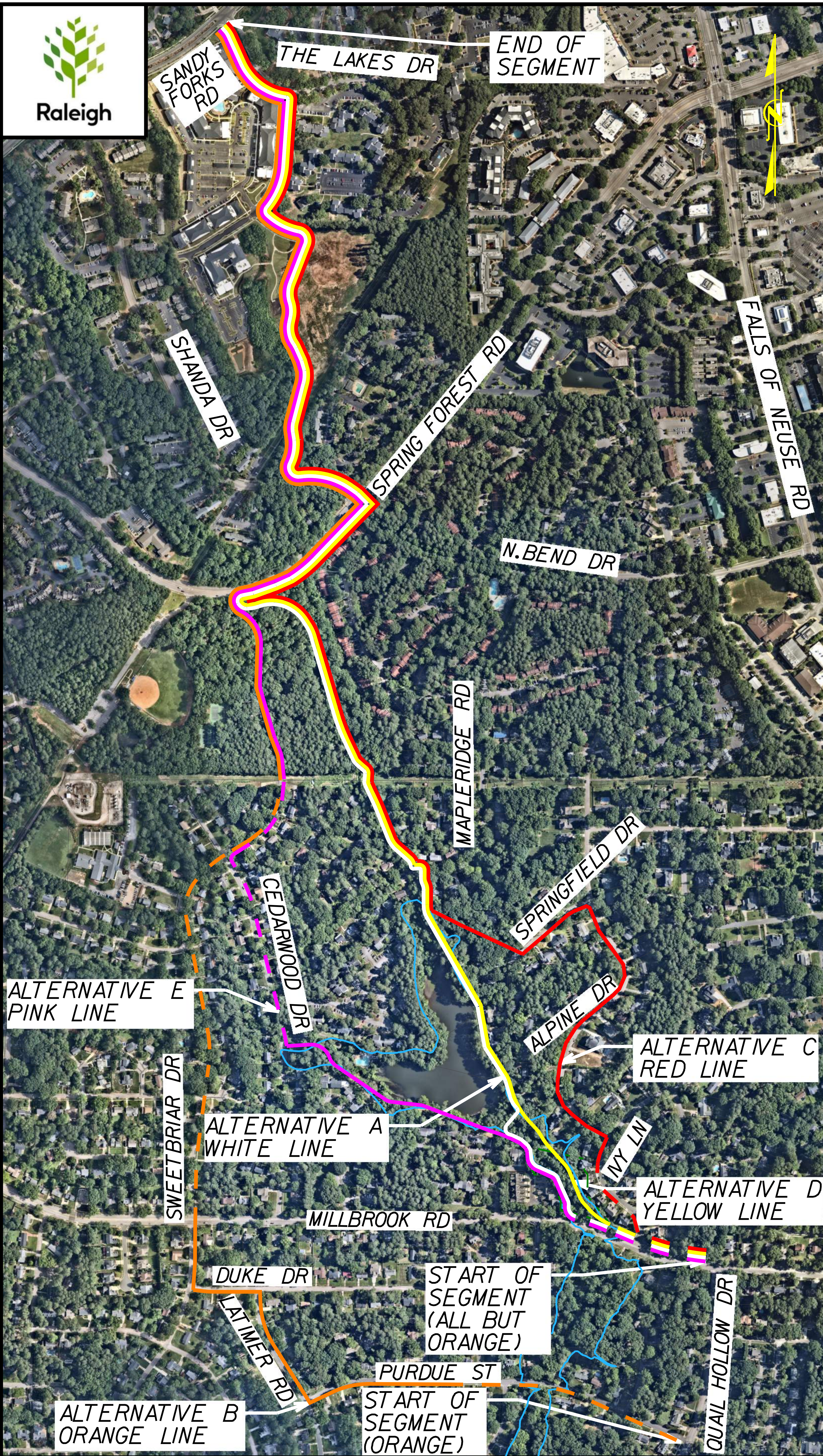
PREPARED BY:

Kimley»Horn

421 FAYETTEVILLE STREET, SUITE 600
RALEIGH, NC 27601
PHONE: (919) 677-2000
FAX: (919) 677-2050 PE NO. F-0102

BIG BRANCH
GREENWAY CONNECTOR
SEGMENT 4





Segment 6: Millbrook Road/Purdue Street to Sandy Forks Road

Alternative A (White) - \$\$\$\$

- Advantages
 - 5000' in wooded areas
 - 500' within greenway easement
- Challenges
 - 4500' along streets
 - Limited sight distance crossing Millbrook Rd
 - Likely requires boardwalk along pond
 - One crossing of Big Branch on structure
 - Close proximity to 18 Homes

Alternative B (Orange) - \$

- Advantages
 - 2700' in wooded areas
 - Avoids crossing Big Branch
 - Utilizes existing sidewalks
 - Adequate sight distance crossing Millbrook Rd
 - Avoids running parallel to Millbrook Rd
- Challenges
 - 8700' along streets
 - Only wooded area is within Cedar Hills Park
 - Not within greenway easement
 - Close proximity to 19 Homes

Alternative C (Red) - \$\$

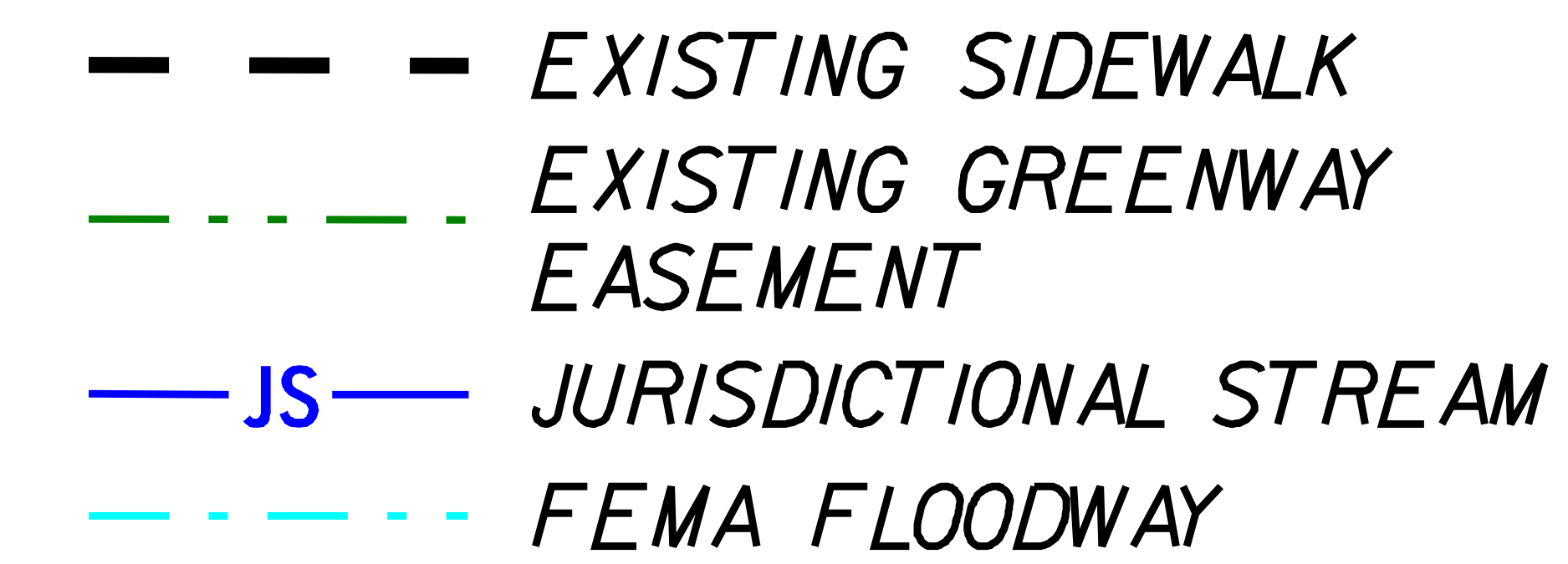
- Advantages
 - 3600' in wooded areas
 - No crossings of Big Branch
- Challenges
 - 6600' along streets
 - Close proximity to 20 Homes
 - Not within greenway easement
 - Limited sight distance crossing Millbrook Rd

Alternative D (Yellow) - \$\$\$

- Advantages
 - 5500' in wooded areas
 - Avoids Big Branch crossings
 - 450' within greenway easement
- Challenges
 - 4400' along streets
 - Close proximity to 18 Homes
 - Limited sight distance crossing Millbrook Rd
 - Likely requires boardwalk along pond

Alternative E (Pink) - \$\$

- Advantages
 - 4100' in wooded areas
 - Avoid close proximity to homes bordering the pond
 - Utilizes existing Sidewalks
 - 500' within greenway easement
- Challenges
 - 6000' along streets
 - Only wooded area is within Cedar Hills Park
 - Limited sight distance crossing Millbrook Rd
 - Close proximity to 21 Homes



Kimley»Horn

421 FAYETTEVILLE STREET, SUITE 600
RALEIGH, NC 27601
PHONE: (919) 677-2000
FAX: (919) 677-2050 PE NO. F-0102

BIG BRANCH GREENWAY CONNECTOR SEGMENT 6

