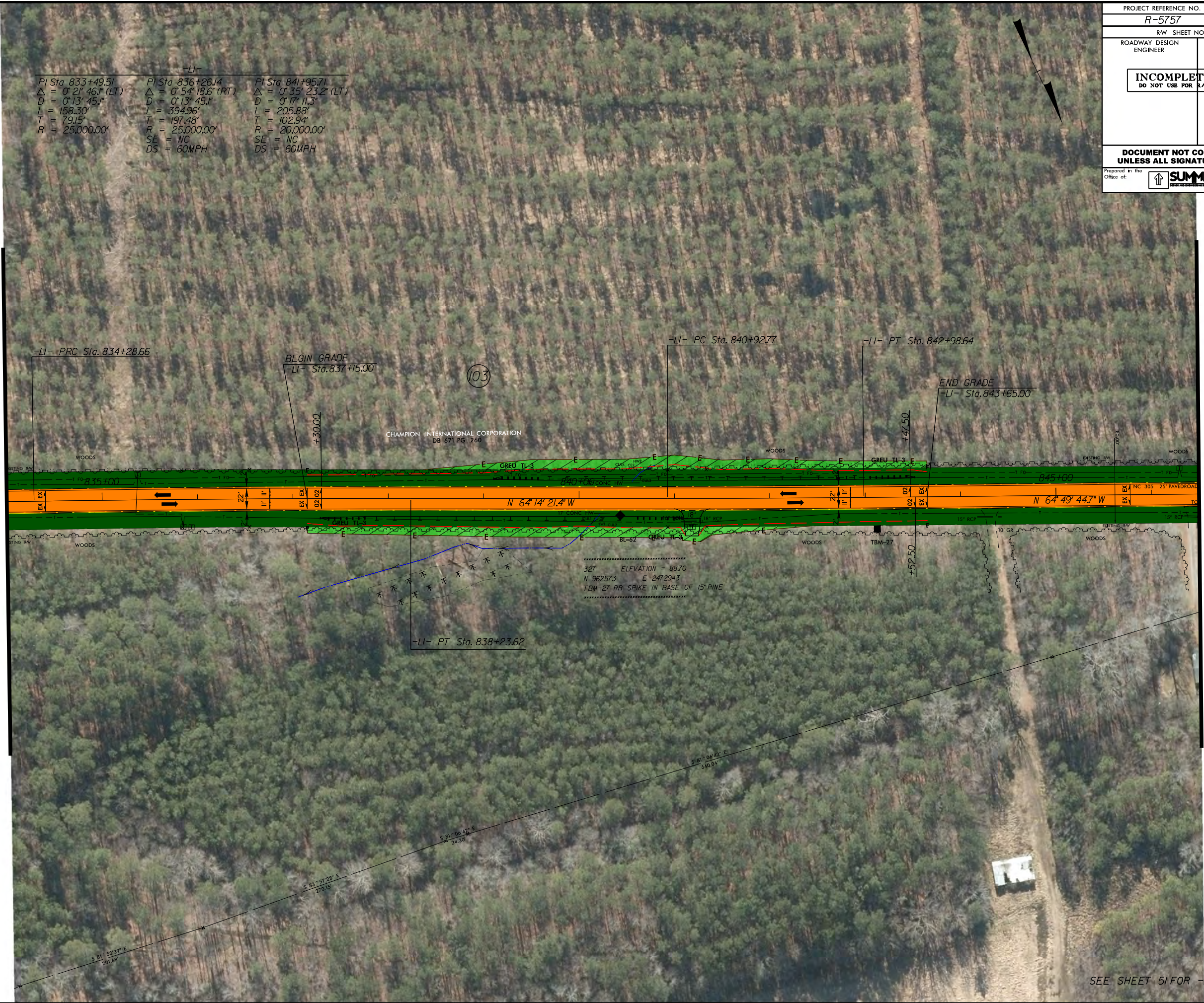


8/17/99

REVISIONS

8:55 AM SYSTEMS  
R:\515\Road\11061\25\_Plan.dgn  
spencer.merrett

MATCHLINE -LI- STA 834+00.00



-LI-		
PI Sta 833+49.51	PI Sta 836+26.14	PI Sta 841+95.71
$\Delta = 0^\circ 21' 46.1''$ (LT)	$\Delta = 0^\circ 54' 18.6''$ (RT)	$\Delta = 0^\circ 35' 23.2''$ (LT)
$D = 0^\circ 13' 45.1''$	$D = 0^\circ 13' 45.1''$	$D = 0^\circ 17' 11.3''$
$L = 158.30'$	$L = 394.96'$	$L = 205.88'$
$T = 79.15'$	$T = 197.48'$	$T = 102.94'$
$R = 25,000.00'$	$R = 25,000.00'$	$R = 20,000.00'$
	$SE = NC$	$SE = NC$
	$DS = 60MPH$	$DS = 60MPH$

PROJECT REFERENCE NO. <b>R-5757</b>	SHEET NO. <b>25</b>
RW SHEET NO.	
ROADWAY DESIGN ENGINEER	HYDRAULICS ENGINEER
<b>INCOMPLETE PLANS</b> DO NOT USE FOR R/W ACQUISITION	
<b>DOCUMENT NOT CONSIDERED FINAL</b> UNLESS ALL SIGNATURES COMPLETED	
Prepared in the Office of: 	NC FIRM LICENSE No. P-0339 504 Meadows Drive Hillsborough, NC 27278 (919) 732-3883 (919) 732-6616 (FAX)

MATCHLINE -LI- STA 846+50.00

SEE SHEET 51 FOR -LI-9B- PROFILE