



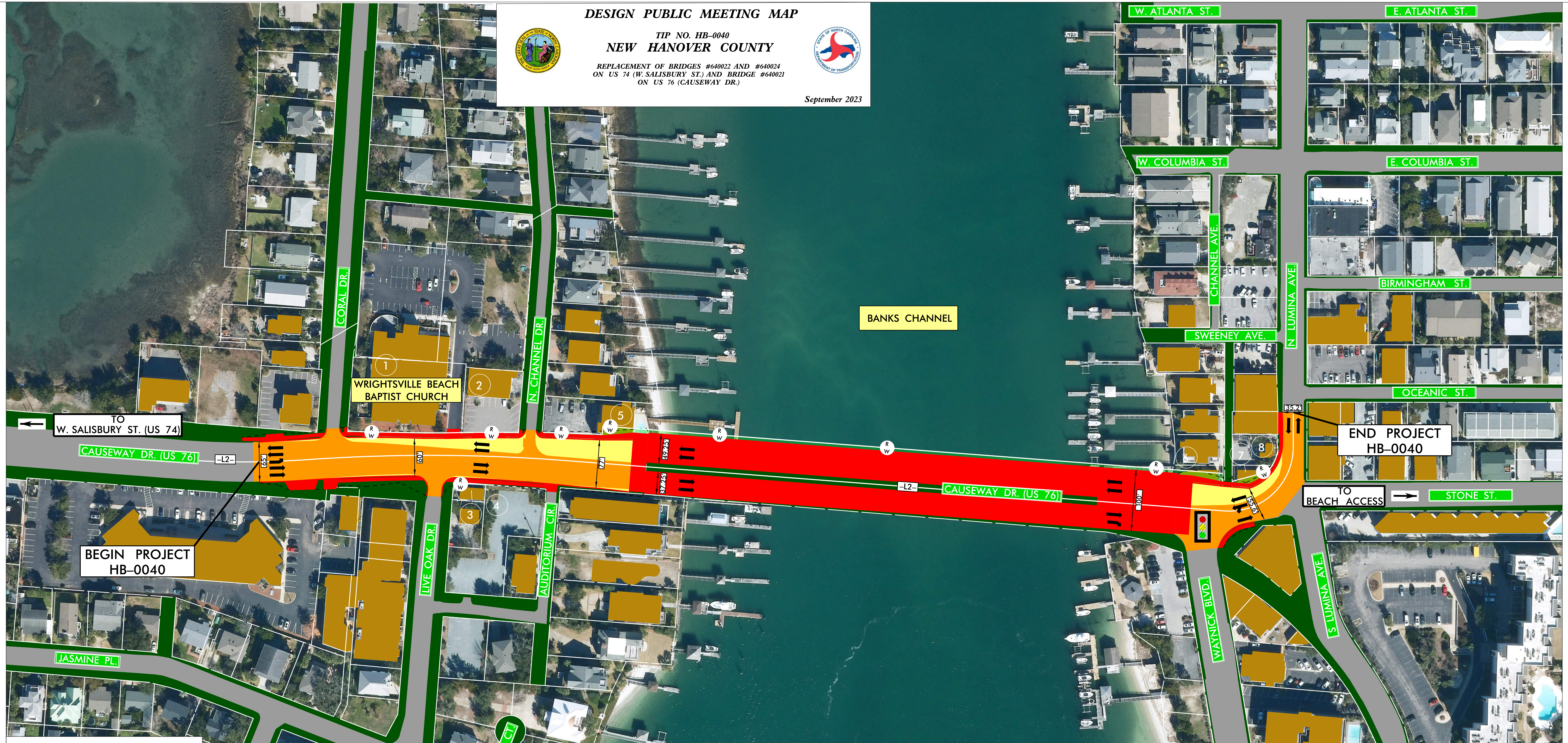
DESIGN PUBLIC MEETING MAP

TIP NO. HB-0040
NEW HANOVER COUNTY
REPLACEMENT OF BRIDGES #640022 AND #640024
ON US 74 (W. SALISBURY ST.) AND BRIDGE #640021
ON US 76 (CAUSEWAY DR.)

September 2023

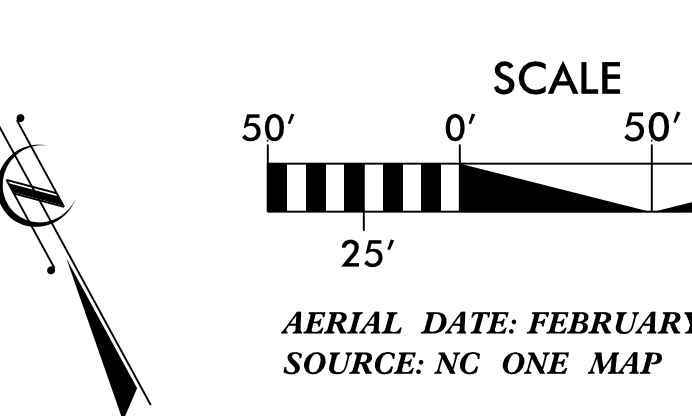
DESIGN PUBLIC MEETING MAP
TIP NO. HB-0040
NEW HANOVER COUNTY
REPLACEMENT OF BRIDGES #640022 AND #640024
ON US 74 (W. SALISBURY ST.) AND BRIDGE #640021
ON US 76 (CAUSEWAY DR.)
September 2023

DESIGN PUBLIC MEETING MAP
TIP NO. HB-0040
NEW HANOVER COUNTY
REPLACEMENT OF BRIDGES #640022 AND #640024
ON US 74 (W. SALISBURY ST.) AND BRIDGE #640021
ON US 76 (CAUSEWAY DR.)
September 2023



DESIGN DATA	
Functional Class.	Arterial
Design Speed	40 mph
Max. Superlev.	0.04

PRELIMINARY PLANS
DO NOT USE FOR CONSTRUCTION
INCOMPLETE PLANS
DO NOT USE FOR PERMITS



LEGEND	
[Orange Box]	BUILDINGS
[Green Line]	EXISTING RIGHT OF WAY
[Red Line]	PROPOSED RIGHT OF WAY
[Grey Line]	EXISTING ROADWAY
[Yellow Line]	EXISTING ROADWAY TO BE RESURFACED
[Red Line]	PROPOSED ROADWAY
[Black Line]	PROPOSED STRUCTURES, DRIVEWAYS, SIDEWALK, CURB AND GUTTER
[Dashed Line]	PROPERTY LINES
[Dotted Line]	PRESENT ADT
[Dotted Line]	FUTURE ADT
[Traffic Signal Icon]	EXISTING TRAFFIC SIGNAL

- PARCEL OWNERS**
1. WRIGHTSVILLE BEACH BAPTIST
 2. PUPPY DRUM LLC
 3. LUMINA PROPERTIES LLC
 4. WRIGHTSVILLE UNITED METHODIST CHURCH, INC
 5. HARBOR INN HOMEOWNERS INC
 6. NICHOLAS ABBATICCHIO
 7. RUTH ANN FREDRICHS ET AL
 8. EASTERN SKATEBOARD SUPPLY, INC

NOTE: NO CONTROL OF ACCESS - CONNECTIONS TO A FACILITY PROVIDED VIA RAMPS AT INTERCHANGES, AT-GRADE INTERSECTIONS, AND PRIVATE DRIVEWAYS, NO PHYSICAL RESTRICTIONS, I.E. CONTROL OF NORMAL FUTURE PRIVATE DRIVEWAY CONNECTIONS ARE DEFINED AS ONE CONNECTION PER PARCEL. ADDITIONAL CONNECTIONS MAY BE CONSIDERED IF THEY ARE JUSTIFIED AND IF SUCH CONNECTIONS DO NOT NEGATIVELY IMPACT TRAFFIC OPERATIONS AND PUBLIC SAFETY.

IMPACTS AND DRIVEWAY TIES

LIMITS OF CONSTRUCTION AND THEIR IMPACTS SHOWN ON THIS HEARING MAP ARE BASED ON PRELIMINARY DESIGNS AND PRELIMINARY GROUND SURVEYS. DURING THE FINAL DESIGN STAGE, DESIGNERS WILL ATTEMPT TO MINIMIZE IMPACTS WHERE FEASIBLE USING FINAL GROUND SURVEYS. DRIVEWAY LOCATIONS TO BE DETERMINED DURING FINAL DESIGN USING FINAL SURVEYS.

UTILITY INFORMATION

TO PROVIDE GREATER VISUAL CLARITY, EXISTING AND PROPOSED UTILITIES ARE NOT SHOWN ON THESE MAPS OR ON OTHER DISPLAYS. THE UTILITY INFORMATION SHOWN ON THESE MAPS IS LIMITED TO LOCATION OF MAJOR EXISTING AND POTENTIAL UTILITY EASEMENTS. THE DESIGNS SHOWN ON THESE MAPS, INCLUDING UTILITY EASEMENTS, ARE PRELIMINARY AND ARE SUBJECT TO CHANGE.

THIS PROJECT IS WITHIN THE MUNICIPAL BOUNDARIES OF THE TOWN OF WRIGHTSVILLE BEACH.

BETTERMENTS ARE CONTINGENT ON MUNICIPAL AGREEMENTS. BETTERMENTS CAN INCLUDE BUT ARE NOT LIMITED TO SIDEWALK, SIDEWALK, SIGNAL POLE MATERIAL, AND OPTIONAL ROAD IMPROVEMENTS.

PEAK HOUR TRAFFIC VOLUME			
CAUSEWAY DR.	N. LUMINA AVE.	WAYNICK BLVD.	2023
580	664	399	420
612	698	128	134
		181	190
			2028

