

SR 161 AT MAPLE CANYON AVE., SPRING RUN DR. & PARKVILLE ST. FRA-161-12.83; PID 110376 August 2020

CONSISTENTLY APPEARED IN THE CITY OF COLUMBUS YEARLY “TOP 20 HIGH-CRASH LOCATIONS” LIST (BASED ON CRASH RATE) AND SUBSEQUENT MORPC YEARLY “TOP 40 REGIONAL HIGH CRASH LOCATIONS” LIST (BASED ON A COMBINATION OF CRASH FREQUENCY, SEVERITY AND RATE)

PROJECT PURPOSE

THE PURPOSE OF THE STATE ROUTE 161 CORRIDOR STUDY WAS TO IMPROVE THE SAFETY OF THE CORRIDOR INTERSECTIONS. MEANS TO ACHIEVING THIS GOAL INCLUDE CORRECTING GEOMETRIC DEFICIENCIES, PROVIDING APPROPRIATE ACCESS TO THE CORRIDOR FOR LOCAL RESIDENCES, BUSINESSES, AND FUTURE DEVELOPMENTS CONSISTENT WITH THE CITY OF COLUMBUS ACCESS MANAGEMENT STANDARDS AND GUIDELINES, AND MINIMIZING THE IMPACTS TO INCREASING CONGESTION WHERE POSSIBLE .

PROPOSED IMPROVEMENTS

PLACING MINI-ROUNDAABOUTS, EACH WITH AN INSCRIBED CIRCLE DIAMETER (ICD) OF 90’, NEAR:

1. THE INTERSECTION OF MAPLE CANYON AVE. WITH THE NORTH SERVICE ROAD,
2. THE INTERSECTION OF MAPLE CANYON AVE. WITH THE SOUTH SERVICE ROAD,
3. THE INTERSECTION OF PARKVILLE ST. WITH THE SOUTH SERVICE ROAD,
4. AND THE INTERSECTION OF SPRING RUN DR. WITH THE NORTH SERVICE ROAD.

WE ALSO RECOMMEND ADDING AN ADDITIONAL LANE BETWEEN THE ROUNDABOUT AND THE SERVICE ROAD ON PARKVILLE ST., AND EXTENDING THE TURN LANES ON BOTH LEGS OF MAPLE CANYON AVE. AND ON SPRING RUN DR.

PROPOSED IMPROVEMENTS ALSO INCLUDE ADDING A SHARED USE PATH BETWEEN SR 161 AND THE SERVICE ROADS FROM MAPLE CANYON AVE. TO CLEVELAND AVE.

ACQUISITION OF PROPERTY AND UTILITY RELOCATION MAY BE NEEDED.



COST ESTIMATE

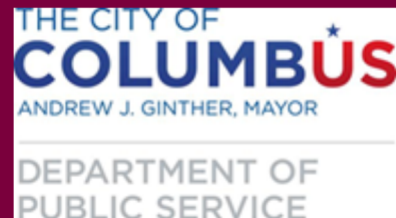
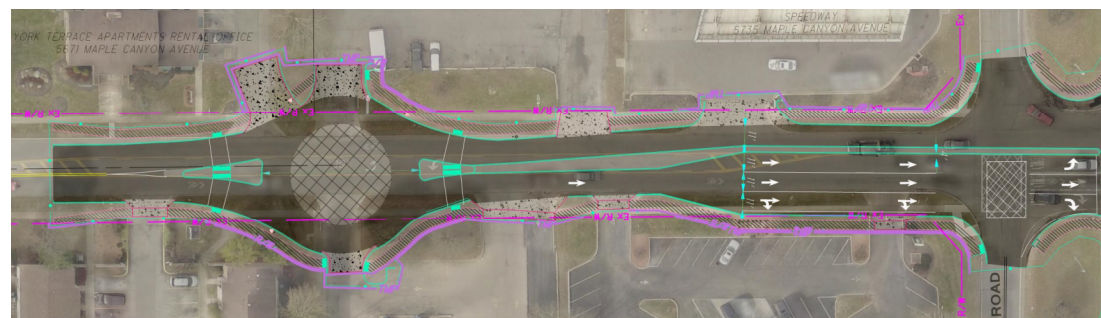
1. ROADWAY AND SUP IMPROVEMENTS \$7.2 MILION

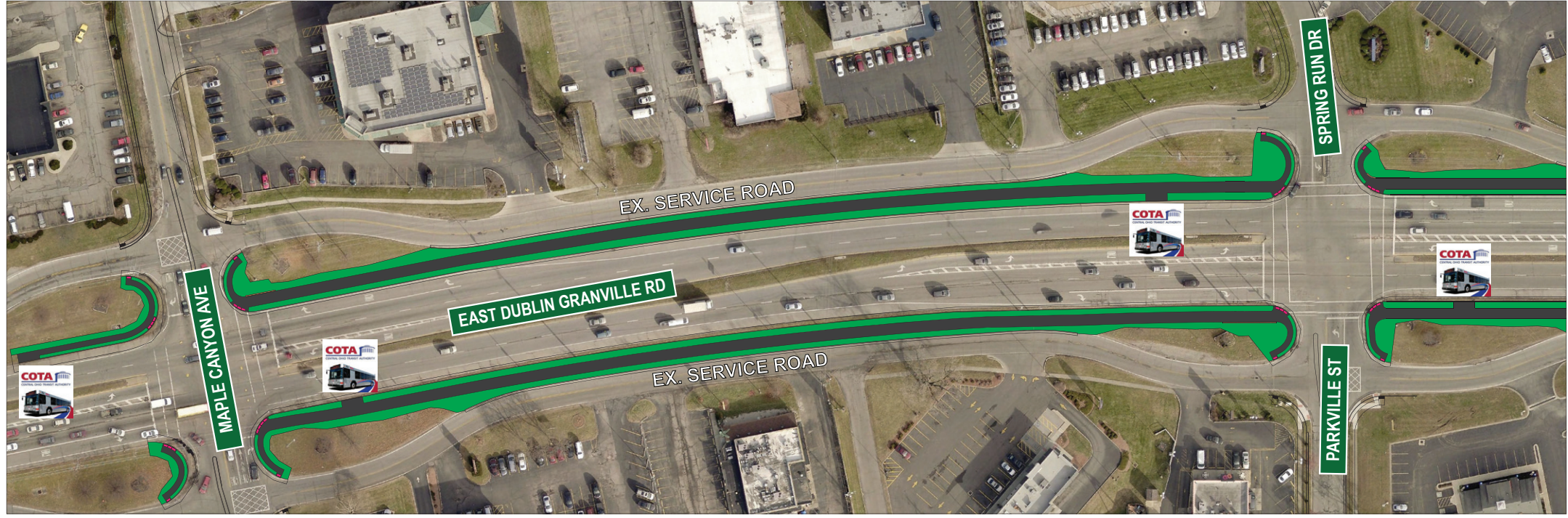
SCHEDULE

1. COMPLETE DESIGN JULY 2021
2. ACQUISITION COMPLETE NOVEMBER 2021
3. UTILITY RELOCATION COMPLETE JANUARY 2022
4. BEGIN CONSTRUCTION MAY 2022
5. COMPLETE CONSTRUCTION FOR MAPLE CANYON DECEMBER 2022, PARKVILLE AND SPRING RUN BY DECEMBER 2023

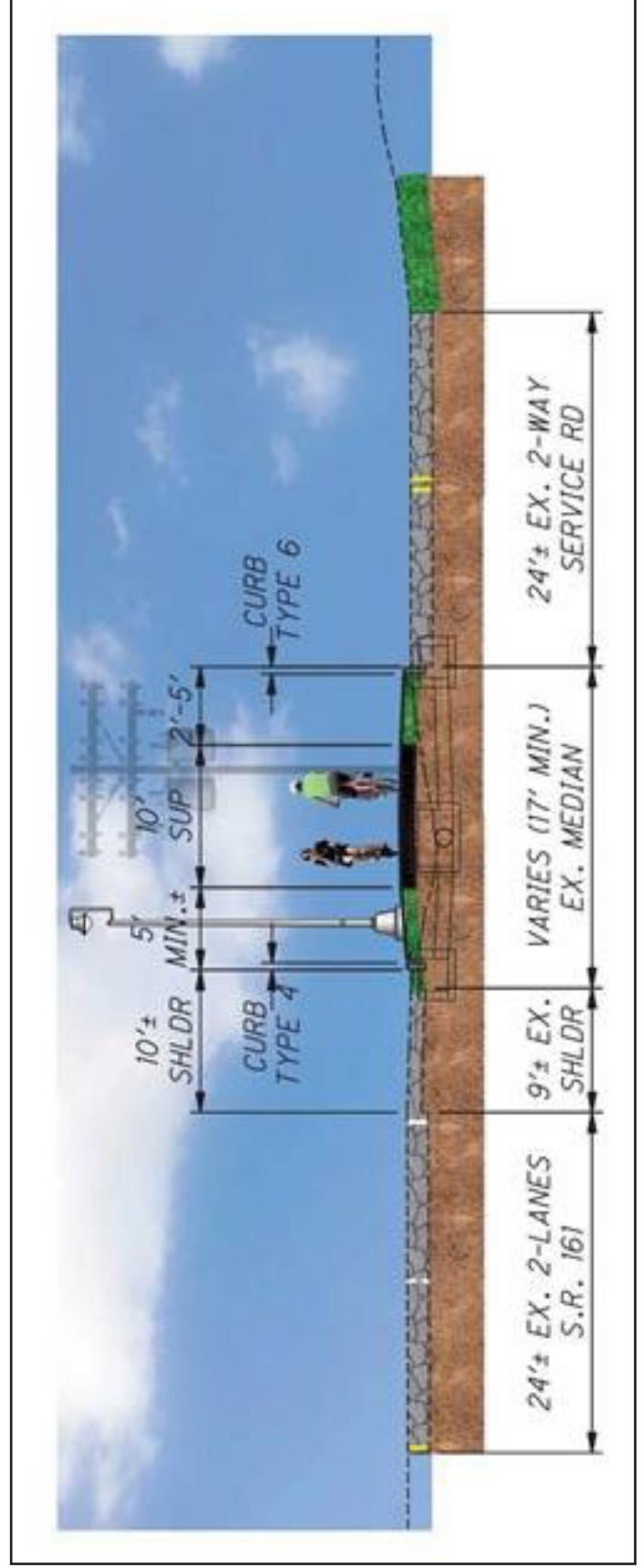
FUNDING

1. GOVERNER’S TOP 150 FUNDING
2. MORPC FUNDING
3. ODOT SAFETY FUNDING FOR SUP





Shared Use Path (Recommended Alternative)



S.R. 161 SUP

ALTERNATE 3
MEDIAN SUP

CALCULATED
BLW
CHECKED
BKM

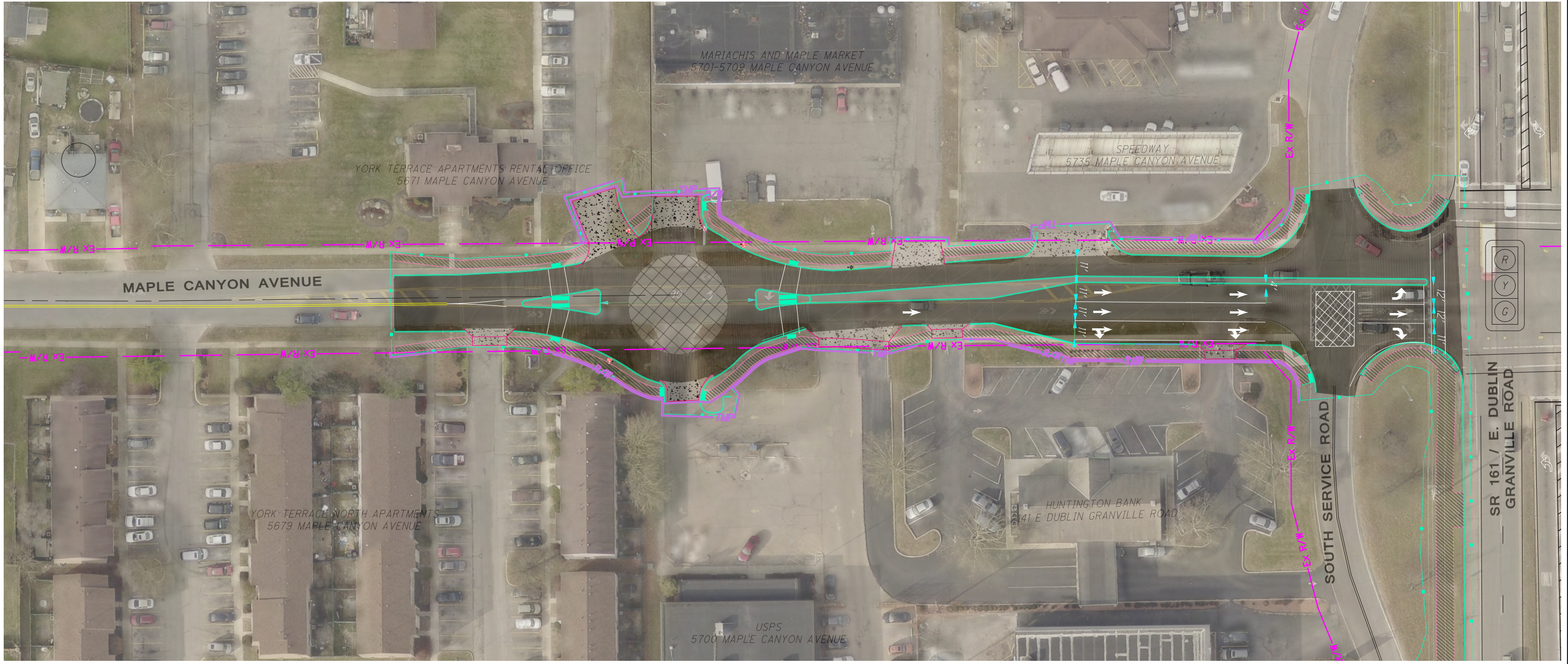


HORIZONTAL
SCALE IN FEET

X:\Projects\GFL\2019\1921\100300_COC-SR_161-171\FRA\110376\Design\Roadway\Sheets\Archive\110376_GP001 - Public Meeting.dwg_30-Jul-20 3:47 PM

LEGEND

- PROPOSED CONSTRUCTION LIMITS
- - - EX R/W EXISTING RIGHT OF WAY
- TMP PROPOSED RIGHT OF WAY
- PROPOSED CURB
- PROPOSED CONCRETE DRIVES
- PROPOSED PAVEMENT AREAS
- PROPOSED MEDIAN/ROUNDBABOUT
- PROPOSED SIDEWALK
- PROPOSED CENTER OF ROUNDBABOUT

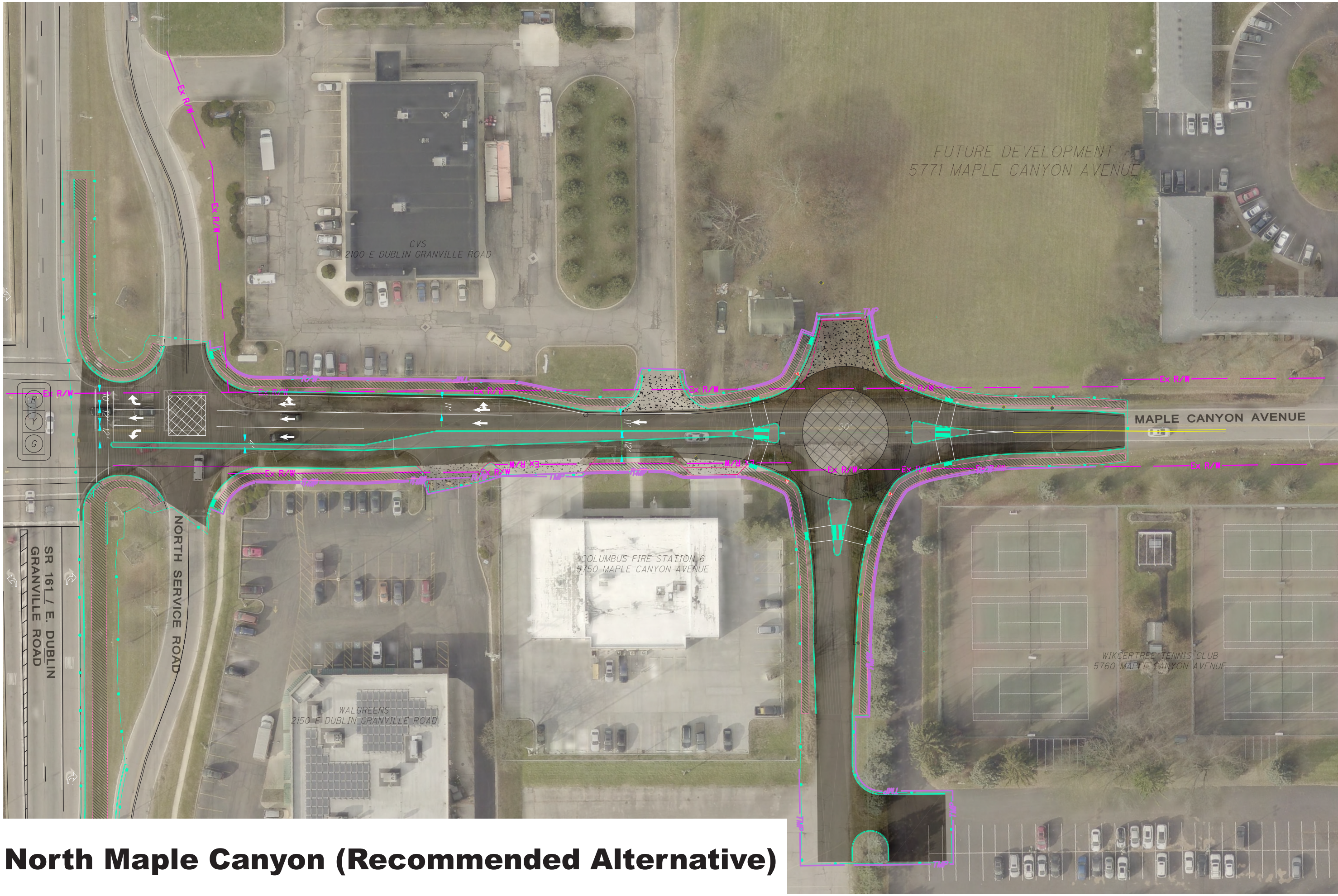



 0 30 60
 HORIZONTAL SCALE IN FEET
 P.I.D. 110376
 DESIGNED DLZ

PLAN VIEW
SOUTH MAPLE CANYON AVE & SR 161

SR 161/1-71

South Maple Canyon (Recommended Alternative)



North Maple Canyon (Recommended Alternative)

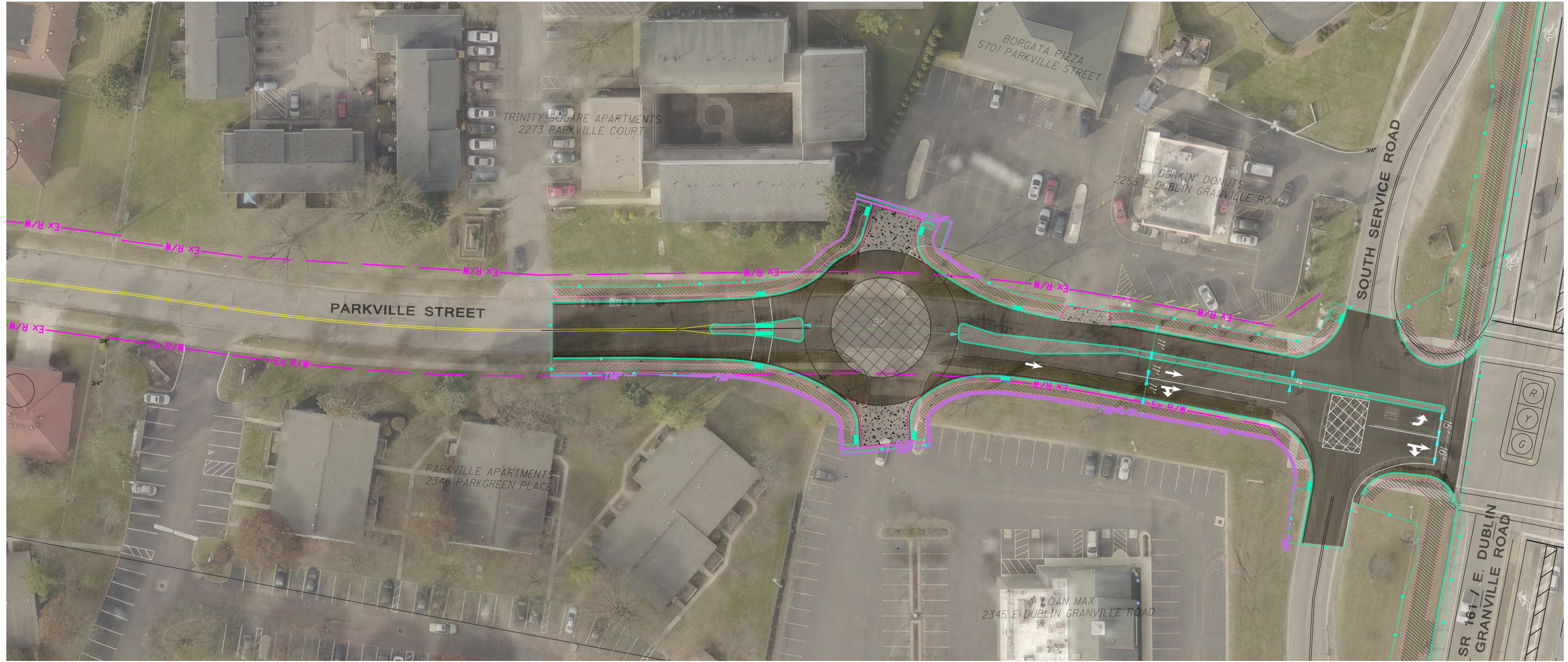
PID: 110376
DESIGNED: DLZ

HORIZONTAL SCALE IN FEET

PLAN VIEW
NORTH MAPLE CANYON AVE & SR 161

SR 161/1-71

X:\Projects\GFL\2019\1921\100300_COC-SR_161-I71\FRA\110376\Design\Roadway\Sheets\Archive\110376_CP001 - Public Meeting.dwg_30-Jul-20 3:47 PM



Parkville Street (Recommended Alternative)

PID 110376
DESIGNED DLZ

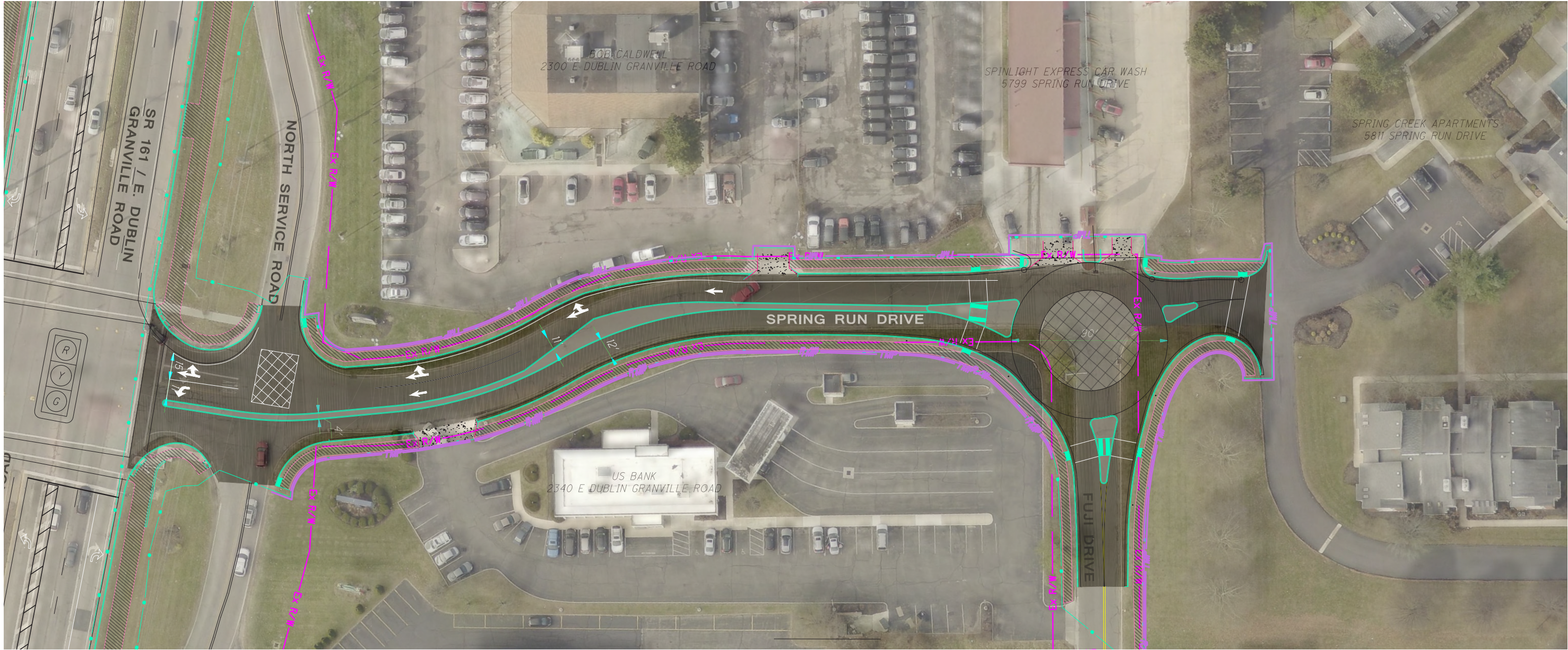
HORIZONTAL SCALE IN FEET

PLAN VIEW
PARKVILLE ST & SR 161

SR 161/I-71

3
4

X:\Projects\GFL\2019\1921\100300_COC-SR_161-171\FRA\110376\Design\Roadway\Sheets\Archive\110376_CP001 - Public Meeting.dwg_30-Jul-20 3:47 PM



Spring Run Drive (Recommended Alternative)

P1D
110376
DESIGNED
DLZ

0 30 60
HORIZONTAL
SCALE IN FEET

PLAN VIEW
SPRING RUN DR & SR 161

SR 161/I-71

4
4