



ALBEMARLE ROAD PARK

MASTER PLAN PUBLIC INPUT SESSION

NOVEMBER 14, 2020

Getting to know Zoom

Zoom Meeting | You are viewing Park & Rec's screen | View Options

Participants: You, Park & Rec, Your Neighbor, The Consultant, Elected Official, Another Neighbor

Stay muted! Video optional.
Red line through microphone = muted | Red line through video = off

Unmute | Start Video

Ask questions and add comments to the chat throughout the meeting!

Participants (8)
Find a participant
You, Park & Rec, Your Neighbor, The Consultant, Elected Official, Another Neighbor
Invite, Unmute Me, ...

Chat
To: Everyone
Type message here...

Unmute, Start Video, Participants, Chat, Share Screen, Record, Reactions, Leave

Project Team:

Mecklenburg County Park & Recreation, Capital Planning Division

Bert Lynn, PLA, ASLA, LEED AP, Director

Joyce Figueroa, Planner

Landworks Design Group, PA

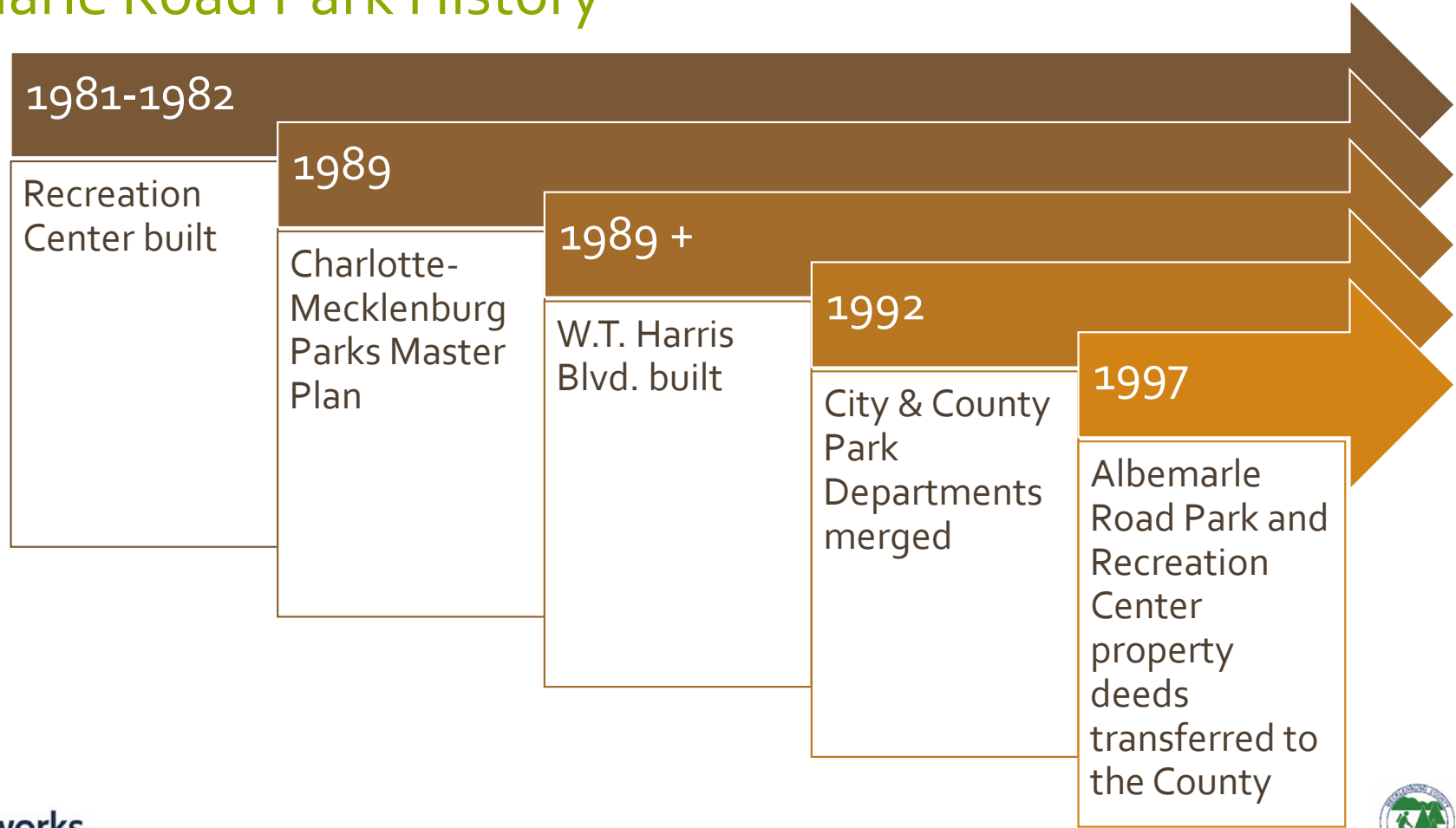
Matt Langston, PLA, FASLA, Landscape Architect

Lisa Carey, PLA, ASLA, Landscape Architect

Public Input Meeting Goals:

- Solicit input from neighbors, stakeholders, and end users of the park
- Review feedback to date
- Foster dialogue about ideas for the park
- Prioritize desired improvements
- Generate excitement about the proposed improvements!

Albemarle Road Park History



Albemarle Road Park - Mecklenburg County Park & Recreation

MeckPlaybook: Mecklenburg County Park & Recreation 2020 Master Plan

Park Rating System							
	GOOD		ACCEPTABLE			POOR	
	A	B	C	D	F	Y	Z
State of the Park (Urgency of Need)	Outstanding asset of the system	Good, but some upgrades needed	Decent, can benefit from upgrades	Needs urgent attention	Needs immediate attention	UNDER CONSTRUCTION	PARKLAND RESERVE
Visible wear	New or newly renovated	Shows use	Worn but not broken	Very worn, visually neglected	Extensive neglect		
Equipment functionality	Highly functional, new equipment	Highly functional, used, but not worn	Functional, dated equipment	Dated equipment	Broken equipment, safety hazard		
Paths & paving	New paths, paving	Functional path network	Usable paths	Eroded paths, cracked pavement	Broken or absent paths		
Assets	Many assets	Has a lot to offer	Basics	Bare	Few or no assets		
Cohesiveness (overall design intent)	Uniform vision and design	Logical design	Divided with half new and half requiring attention	Disjointed	Lack of intent or design		
Visibility/Signage	Clearly marked entrances, visible signage	Signage and entrances clear	Signage and entrances visible	Signage worn, entrances present	Signage broken, entrances hard to find		
Accessibility				Not ADA Accessible	Not ADA Accessible		

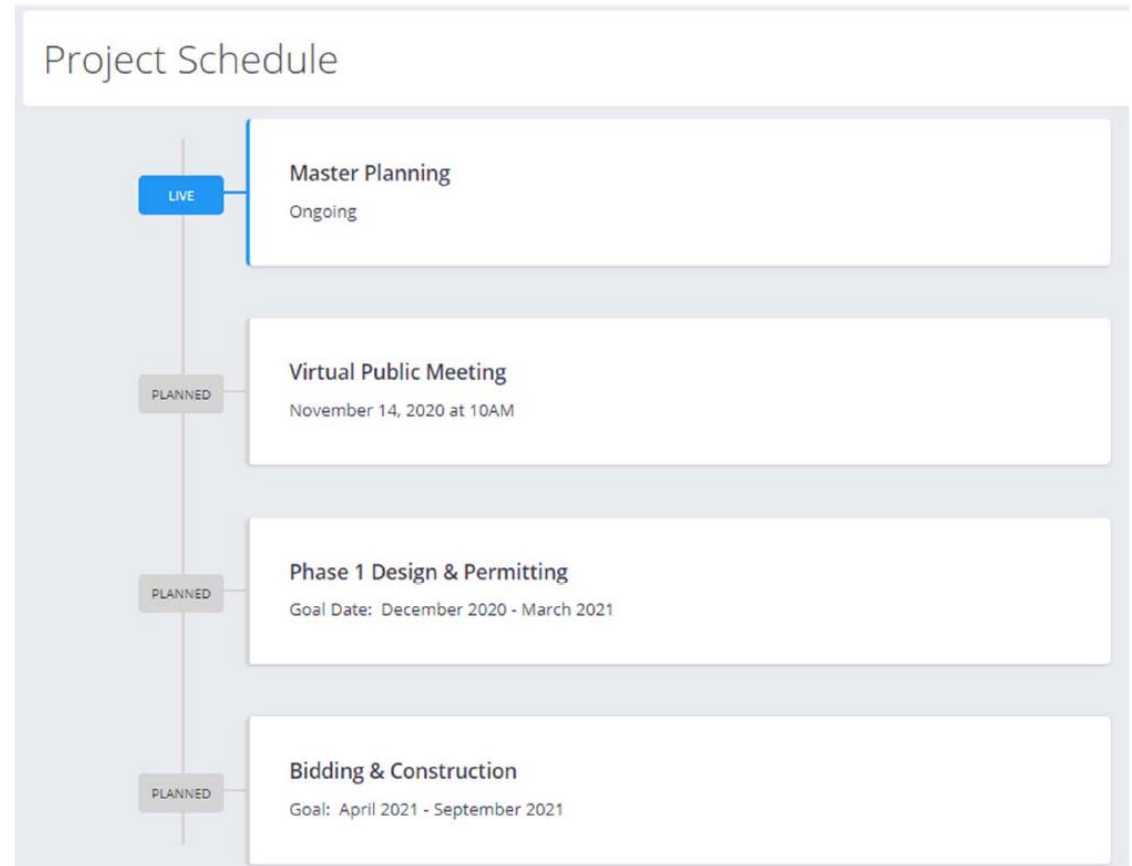
www.meckplaybook.com

Albemarle Road Park - Mecklenburg County Park & Recreation



Albemarle Road Park Project

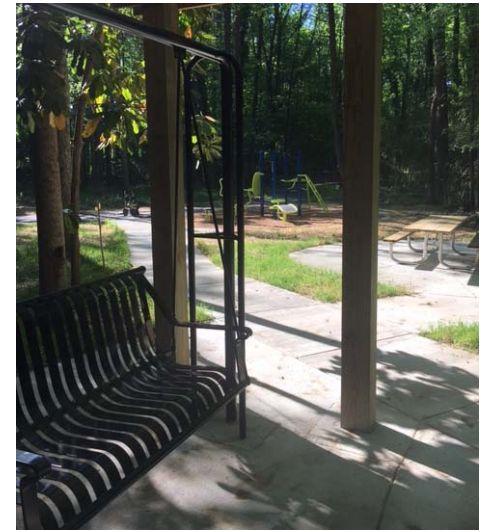
- Neighborhood Park
- 21 acres
- Scope: Master Planning & Phase 1 Design and Construction
- Phase 1 Budget: \$250,000
- Future Amenity Expansion
- Project Goal: Reactivate and reclaim the park into an asset the community can enjoy, benefit from and take pride in.



Neighborhood Park Classification:

- Smaller Size
- Serve the immediately adjacent, local neighborhood
- Usually only walkable, no restroom facilities
- Typical amenities: picnic shelters, benches, informal play fields and/or courts, and walking trails.

Delta Creek Neighborhood Park





- Park Amenities Include:**
- Benches/seating
 - Access to/from Elementary School
 - Walking trails
 - Outdoor classroom area

Existing Conditions



Albemarle Road Park - Mecklenburg County Park & Recreation

Existing Conditions



Existing Conditions



Existing Conditions



Albemarle Road Park - Mecklenburg County Park & Recreation

Existing Conditions



Existing Conditions

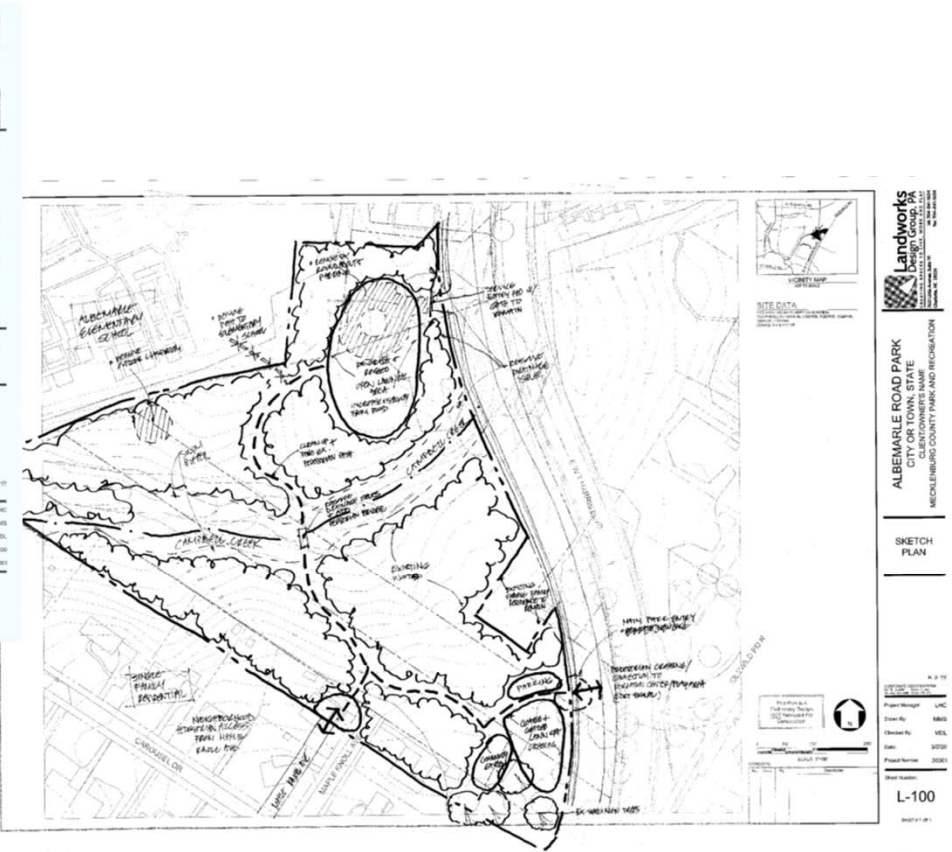


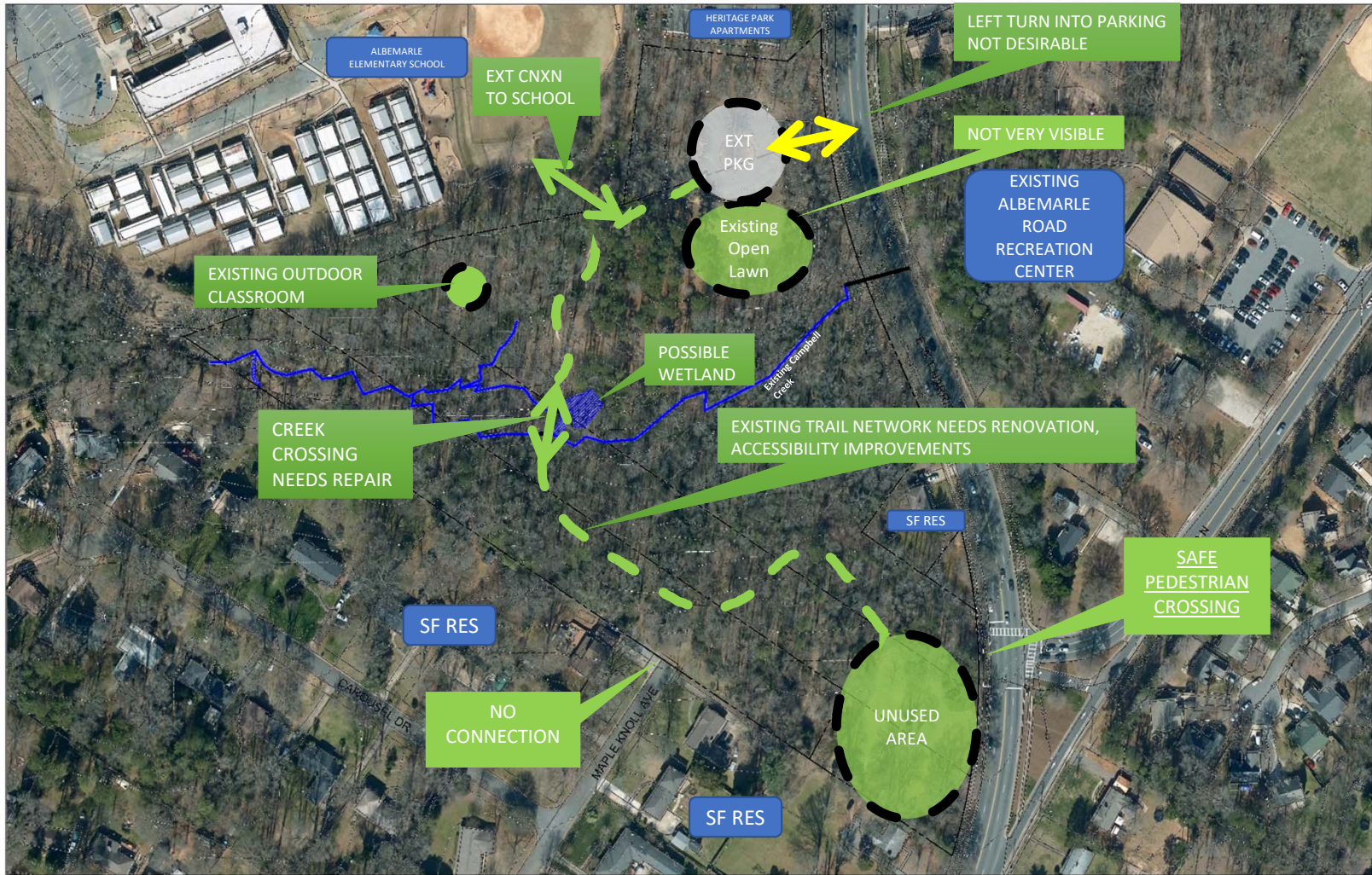
Albemarle Road Park - Mecklenburg County Park & Recreation

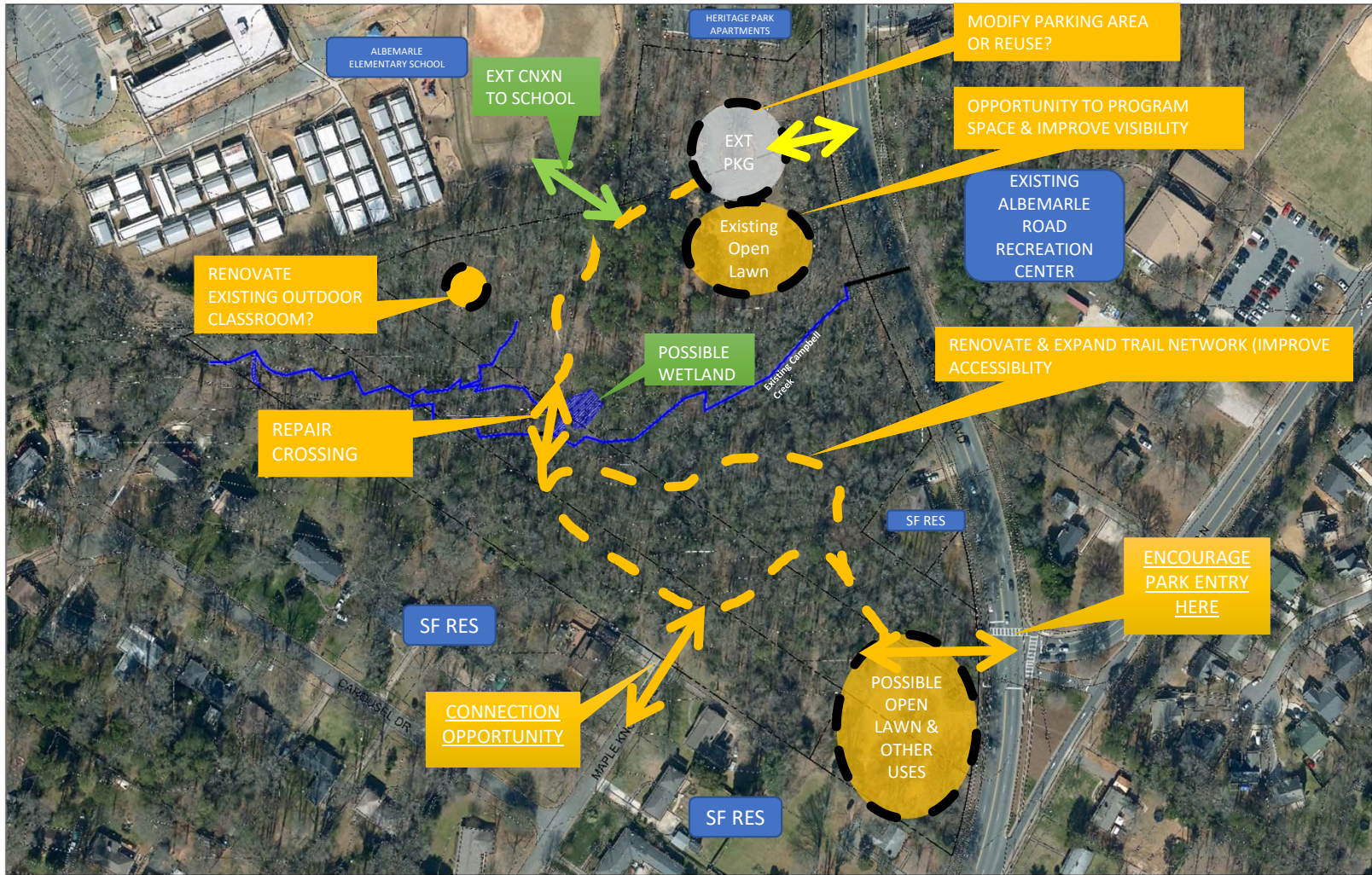
Signalized Pedestrian Crossing at W.T. Harris Blvd & N. Idlewild Rd.



Site Analysis







Site Analysis Conclusions:

- Park needs better visibility
- Safe park access is a challenge
- Creek tends to divide the park already divided from the Rec Center site
- A “Diamond in the Rough”
- Needs investment with commitment to ongoing maintenance

So, now what?

- Park programming ideas
- Input from community
 - Website feedback
 - Today's meeting

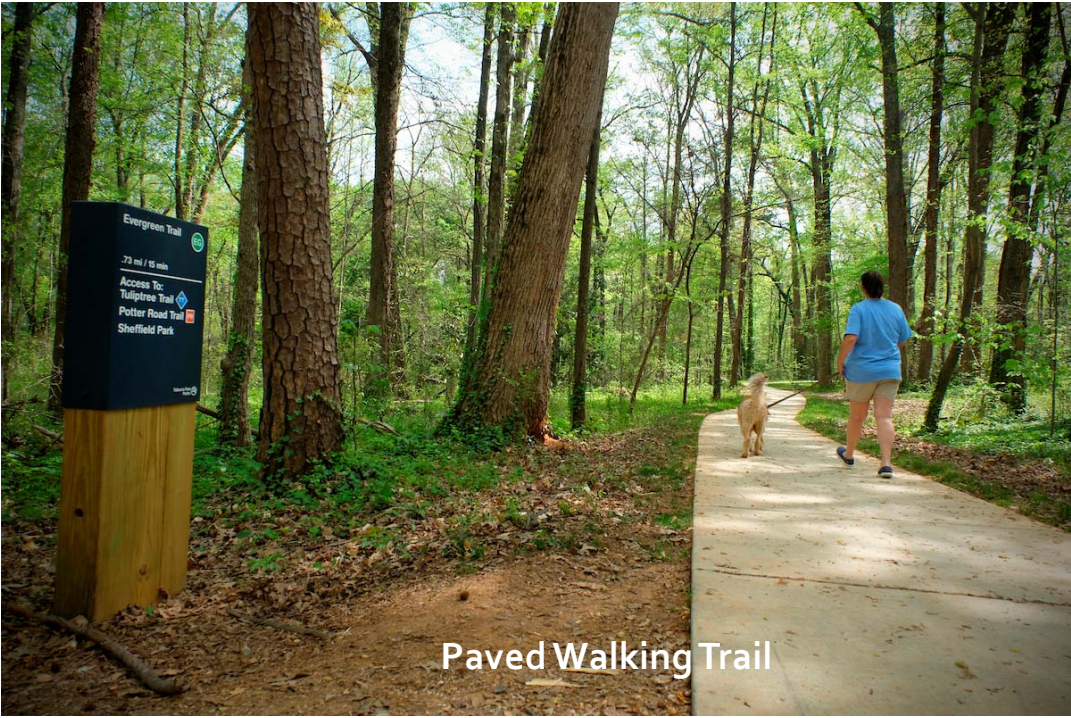


Albemarle Road Park - Mecklenburg County Park & Recreation

Idea Time: Possible Park Components



Unpaved Walking Trail



Paved Walking Trail

Idea Time: Possible Park Components



Grass Play Field



Grass Play Field

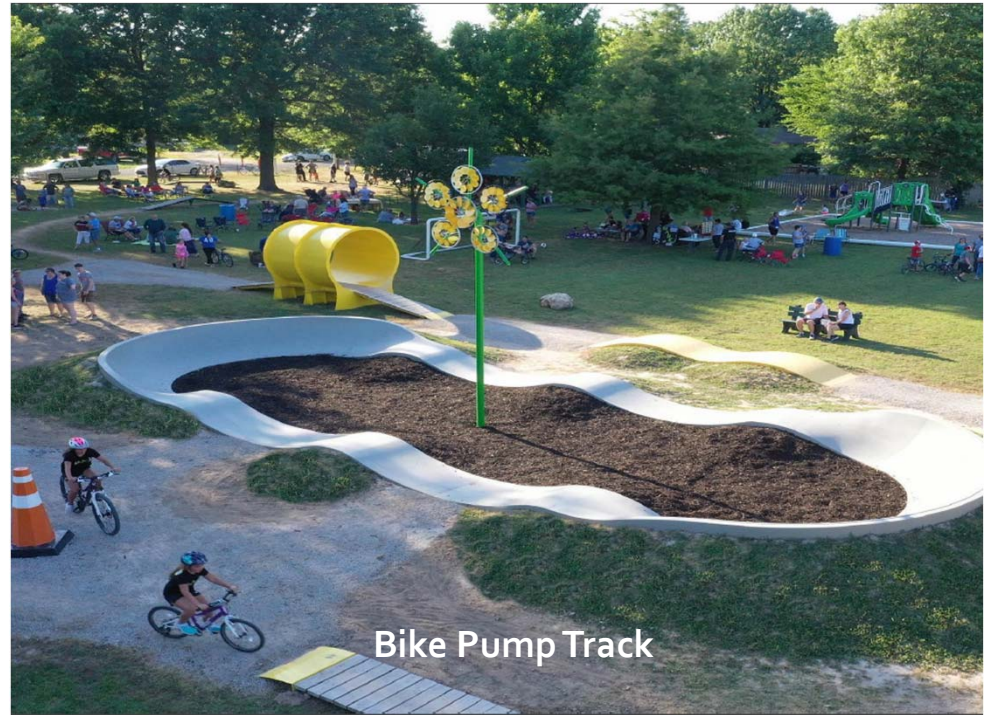
Idea Time: Possible Park Components



Idea Time: Possible Park Components



Bike Park



Bike Pump Track

Idea Time: Possible Park Components



Idea Time: Possible Park Components



Community Garden



Farmers Market

Idea Time: Possible Park Components

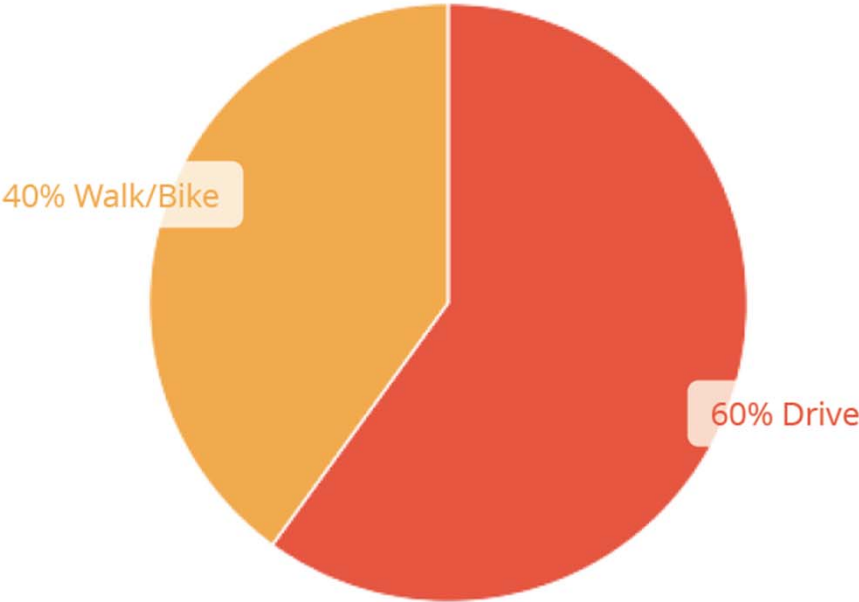


Review of website feedback

publicinput.com/Albemarle

Top responses from web survey:

Would you be more likely to walk or drive to Albemarle Road Park?

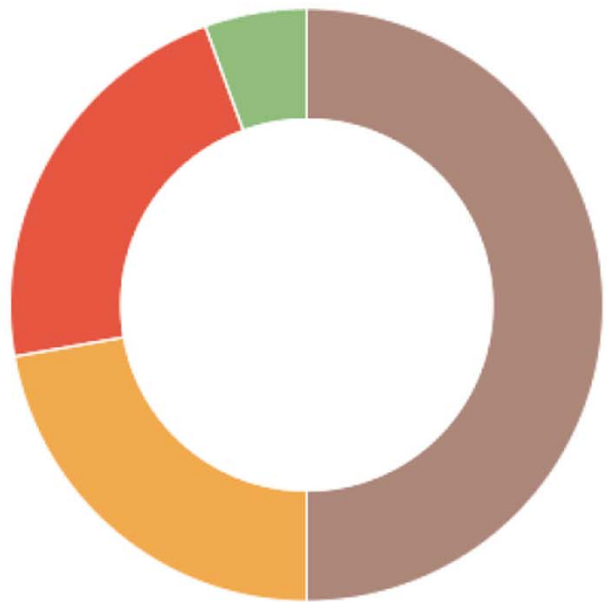


20 respondents

Albemarle Road Park - Mecklenburg County Park & Recreation

Top responses from web survey:

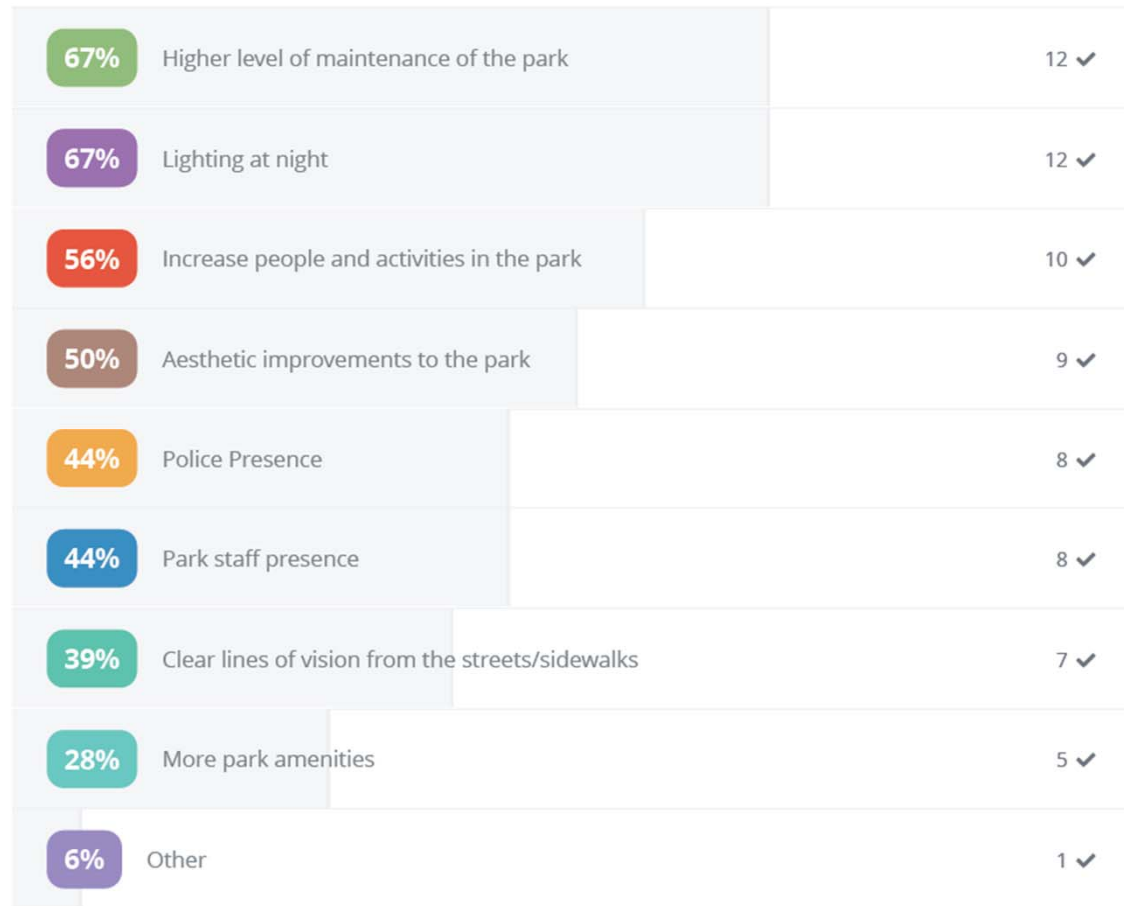
Many of our neighborhood parks have walk-in access only. How do you feel about removing the parking lot at Albemarle Road Park?



- 50% **No way!!! It would be hard to safely walk/bike to the park to enjoy the future amenities.**
- 22% **Absolutely, neighborhood parks are typically design for a neighborhood walk-in experience and not to have parking anyways. I think the parking lot invites unwanted activities at night.**
- 22% **It does not matter to me. If the parking is there, I might use it, but if it is not there, I can always walk to the park.**
- 6% **Other**

18 respondents

Would any of the following elements make you feel safer to fully use and enjoy Albemarle Road Park?



18 Respondents

Albemarle Road Park - Mecklenburg County Park & Recreation

What is your age and the age of family members most likely to use the park? Choose all that apply.

44%	45-55 years old	7 ✓
31%	25-34 years old	5 ✓
31%	35-44 years old	5 ✓
25%	8-12 years old	4 ✓
19%	65 + years old	3 ✓
13%	4-7 years old	2 ✓
13%	13-17 years old	2 ✓
13%	18-24 years old	2 ✓
6%	0-3 years old	1 ✓

16 Respondents

Albemarle Road Park - Mecklenburg County Park & Recreation

Top responses from web survey (alphabetical):

- Bike Park
- Community Garden
- Dog Park
- Educational Trails
- Farmers Market
- Multipurpose Field
- Natural Play Area
- Nature/Observation Areas
- Outdoor Exercise Equipment
- Public Art
- Small/Medium Picnic Pavilion
- Walking trails and neighborhood connectivity

Zoom Poll

Other responses from web survey:

- Stream clean-up opportunities
- Need better accommodation for special needs
- Dog Park
- Braille Nature Trail
- Opportunities for mentoring programs

Q&A/ Open Discussion



Albemarle Road Park - Mecklenburg County Park & Recreation

Next steps:



Possible Park Concept

Albemarle Road Park - Mecklenburg County Park & Recreation

Thank You!

For more information:

publicinput.com/Albemarle

Joyce Figueroa

Planner

704-962-2348

Joyce.Figueroa@mecklenburgcountync.gov

Albemarle Road Park - Mecklenburg County Park & Recreation

