



# Clarks Creek Greenway Preliminary Alignment Study

Fairlea Dr to Hwy 115 in Huntersville  
Public Information Session: November 19, 2020



# Getting to know Zoom



The screenshot shows a Zoom meeting window. At the top, a green bar indicates "You are viewing Park & Rec's screen". Below this is a gallery view with tiles for "You", "Park & Rec", "Your Neighbor", "The Consultant", "Elected Official", and "Another Neighbor". On the right, a "Participants (8)" list shows icons for each participant, including mute and video status. At the bottom, a toolbar contains icons for "Unmute", "Start Video", "Participants", "Chat", "Share Screen", "Record", "Reactions", and "Leave".

Annotations on the screen include:

- Text: "Stay muted!" and "Video optional." with corresponding icons.
- Text: "Red line through microphone = muted" and "Red line through video = off" pointing to the icons in the toolbar.
- A yellow curved arrow pointing from the text "Ask questions and add comments to the chat throughout the meeting!" to the chat window on the right.
- A pink dashed arrow pointing from the "Unmute" and "Start Video" buttons in the toolbar to the text "Stay muted!" and "Video optional." respectively.

# Meet the Team



Mecklenburg County  
Park and Recreation



## Park & Recreation

Bert Lynn, RLA, ASLA  
Director of Capital Planning  
Mecklenburg County Park and Recreation

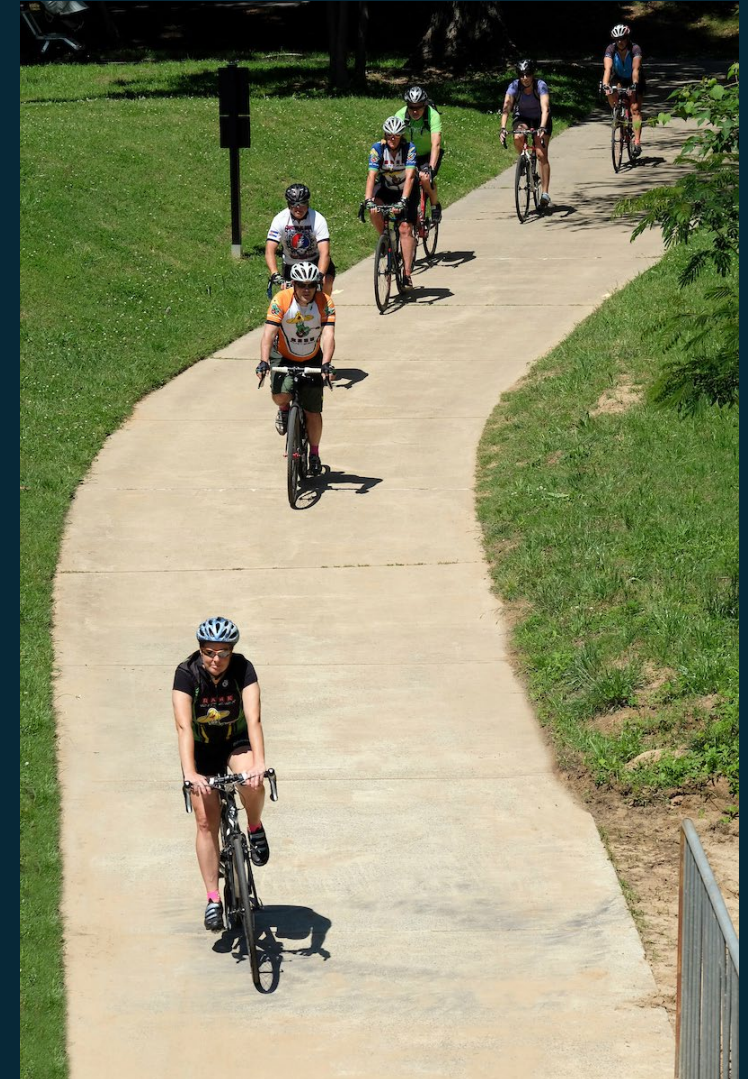
Gwen Cook, RLA, ASLA  
Planner  
Mecklenburg County Park and Recreation

Darneka Waters, ASLA  
Planner  
Mecklenburg County Park and Recreation

## Project Consultant

Jonathan W. Crowder, PLA, CLARB  
Senior Landscape Architect  
Merrick & Company

Daniel O. Lambert  
Landscape Designer  
Merrick & Company



Irwin Creek Greenway



# Greenways Overview



Mecklenburg County  
Park and Recreation



Torrence Creek Greenway

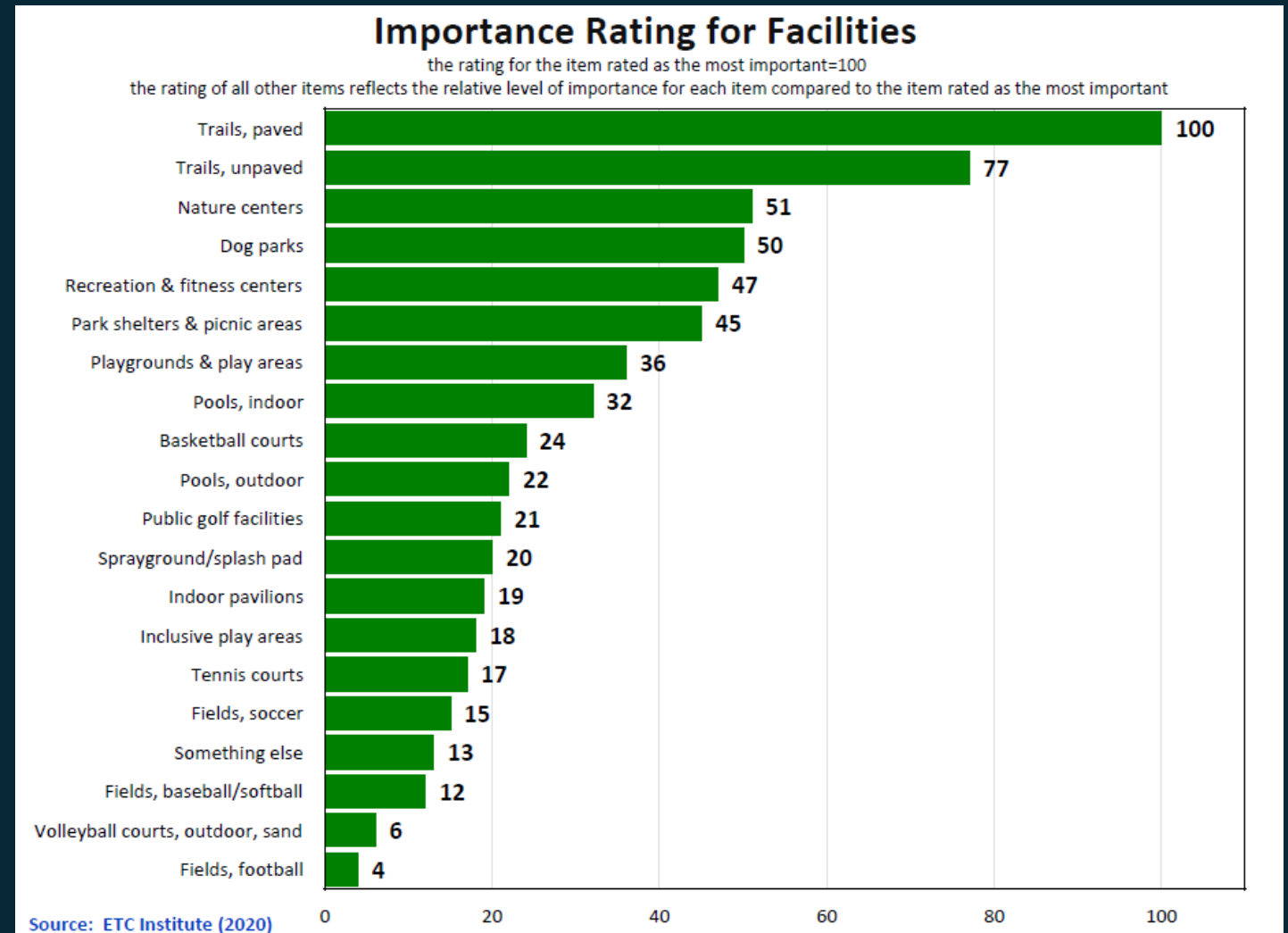
- Vegetated natural buffers that help protect water quality, reduce the impacts of flooding and provide wildlife habitat.
- Linear parks that connect people and places
- Trails that provide recreation, transportation, fitness and economic benefits for all to enjoy.
- Promote diversity, health, quality of life, good business and stretch our tax dollars.



# Greenways Overview



- **#1 Amenity** requested by the residents
- Greenway Master Plan includes more than 308 miles of greenway trails

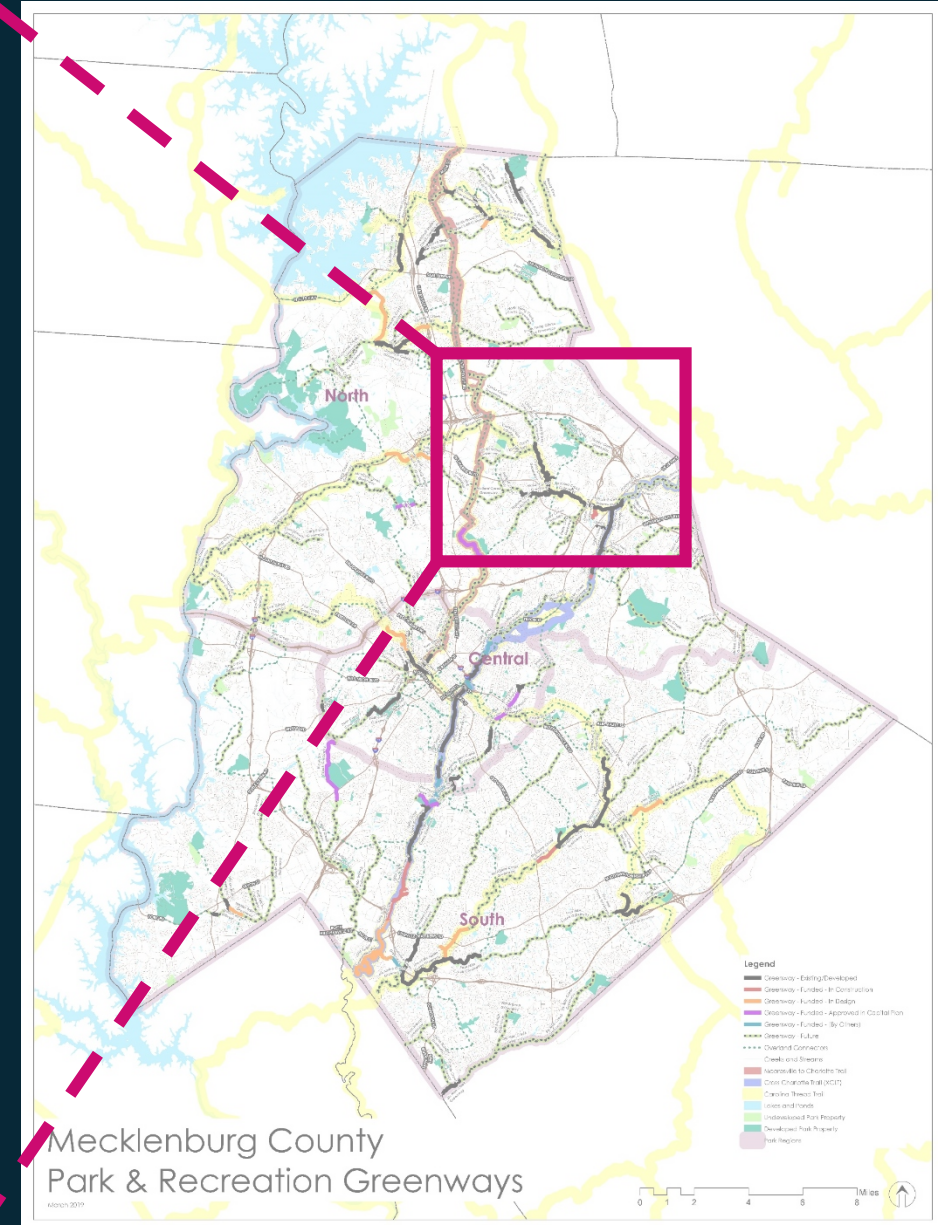
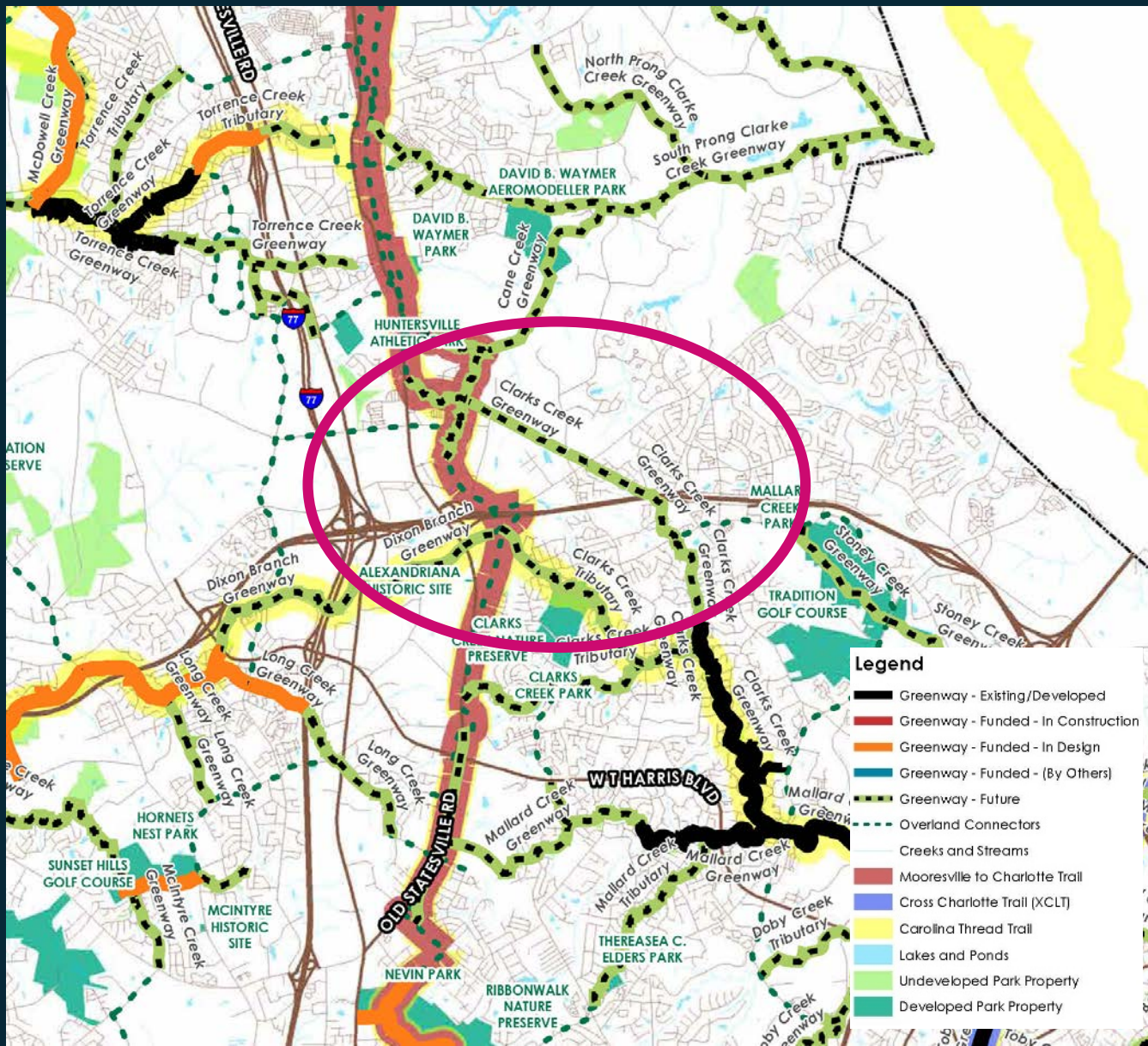




# Future Clarks Creek Greenway



Mecklenburg County  
Park and Recreation





# Project Schedule



Mecklenburg County  
Park and Recreation



## Public Input Session for Preliminary Alignment Study: November 19, 2020

This project is not funded and will not receive Capital Improvement Funding for at least 4-5 years. The study has been done to inform alignment and constructability of the future trail for planning purposes.













# Clarks Creek Greenway Planning Project



Mecklenburg County  
Park and Recreation



## Site Walks - Evaluation of Existing Conditions



Identify any pre-cleared, easy-access areas such as sewer/power easements



Identify any difficult areas, requiring special attention or crossings



Avoid any overly steep areas



Identify potential trailhead and restroom locations

## Planning Alignment Legend and Map Features

LEGEND			
	Utility Easement		Historic Property & Cemeteries
	Mecklenburg County Owned/Parcels		Contaminated Sites
	CMS Schools		Lakes and Ponds
	Floodway		Community Encroachment Zone
	100 Year Flood Zone		Right-of-Way
	Parking Option		Maintenance Facility Option
	Restroom Option		Crossing Required
	Culvert Required		Creeks and Streams
	Mooresville Charlotte Trail Plan		Existing Greenway
	Trail Alignment		Trail Access & Connections



# 1 - Fairlea to DeArmon



Mecklenburg County  
Park and Recreation

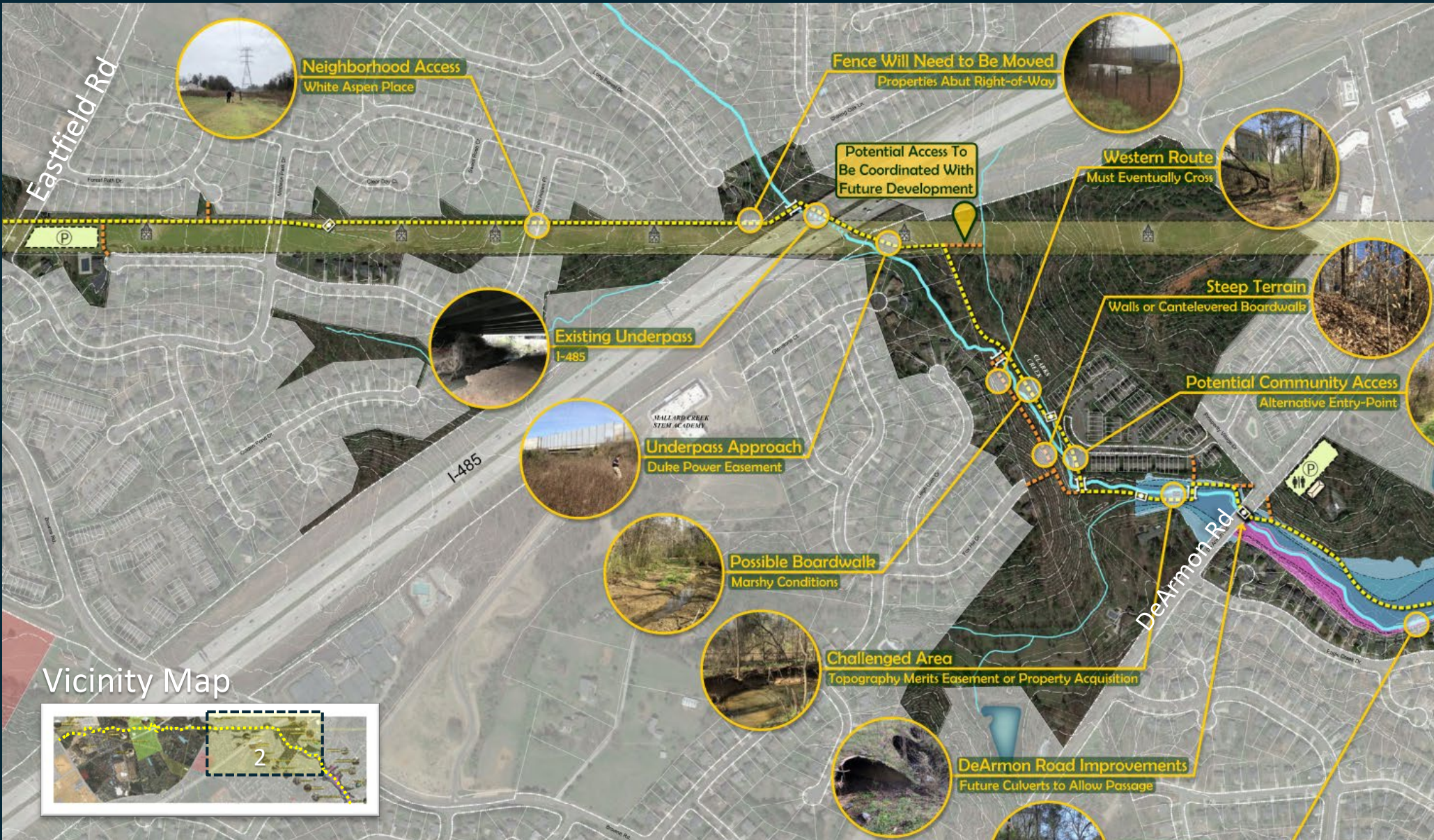




# 2 - DeArmon to I-485 to Eastfield



Mecklenburg County  
Park and Recreation



Vicinity Map

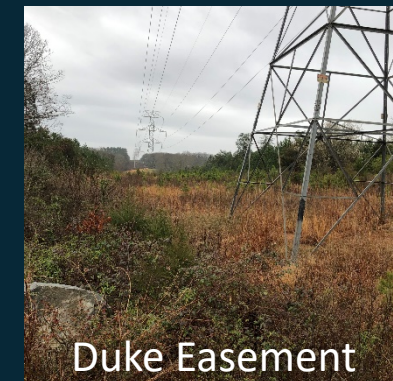




# 3 - Eastfield to Everett Keith



Mecklenburg County  
Park and Recreation



Duke Easement



Neighborhood Access



Steep Terrain



# 4 - Everett Keith to Hwy 115



Mecklenburg County  
Park and Recreation



Existing Access for Duke Easement



Existing Bridge and Access



Hambright Tie-In



# Example Trailhead



Mecklenburg County  
Park and Recreation



Typical elements found @ trailheads may include:

- Restroom
- Parking
- Maintenance Outpost
- Small Play Area



Photo of Little Sugar Creek Greenway (Sharon Road West)



Photo of McAlpine Creek Greenway Parking and Rest Area (Johnston Road)



Little Sugar Creek Greenway (Tyvola Road to Huntingtowne Farms Park)



# Example Bridge



Mecklenburg County  
Park and Recreation



Photo from  
Little Sugar  
Creek Greenway



# Example Greenway Underpass



Mecklenburg County  
Park and Recreation



Photo from Little  
Sugar Creek  
Greenway at  
Archdale Drive



# Example Boardwalk



Mecklenburg County  
Park and Recreation



Photo from  
Toby Creek  
Greenway







# Questions and Answers



Mecklenburg County  
Park and Recreation



The Chat is  
available for  
questions.

Photo from  
Torrence Creek  
Greenway





# Meck Playbook

Mecklenburg County Park & Recreation  
2020 Master Plan

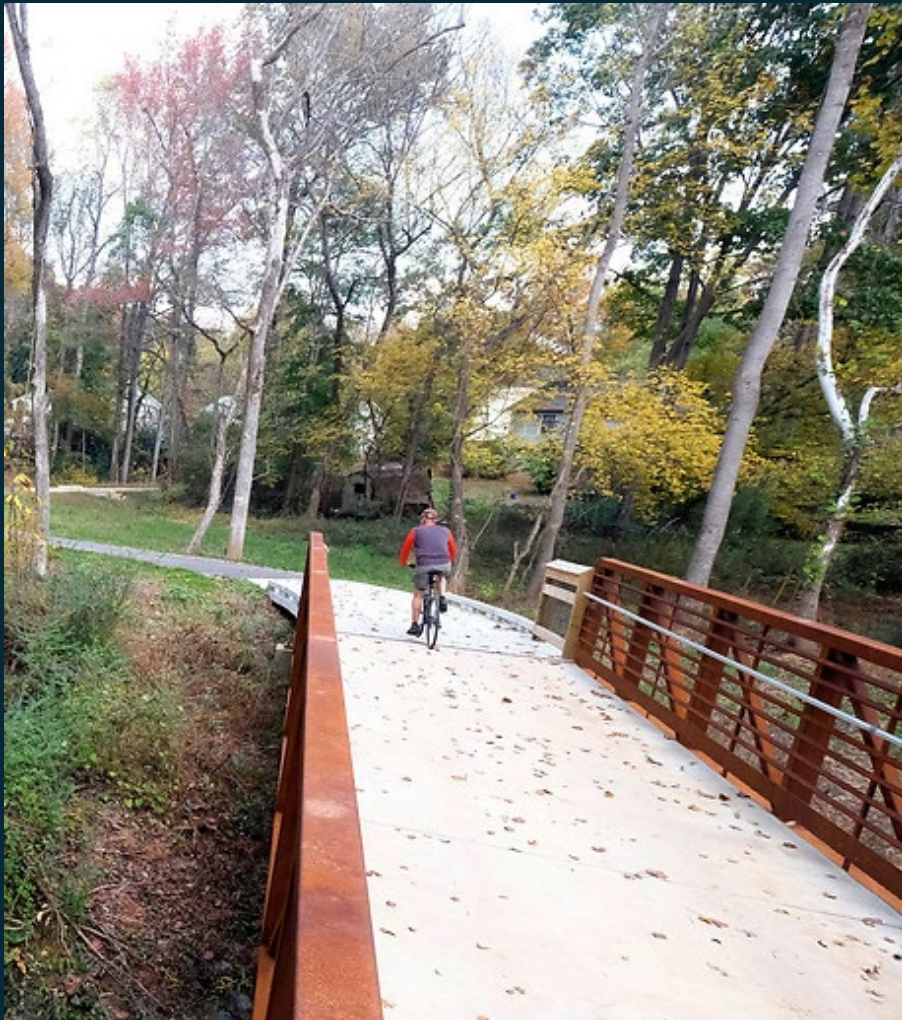
Visit [MeckPlaybook.com](https://www.meckplaybook.com) for more information  
about the developing Master Plan.



# Stay Involved



Mecklenburg County  
Park and Recreation



Campbell Creek Greenway

## Advisory Councils

### **North Park Region Advisory Council (NPRAC)**

**NPRAC Liaison: Blanche Penn**

### **Park & Recreation Commission (PRC)**

**PRC Liaison: Peter Engels**

### **Huntersville Greenway, Trail & Bikeway Commission (GTBC)**

**GTBC Liaison: Diane McLaine**

### **Greenway Advisory Council (GAC)**

**GAC Liaison: Paul Freestone**

For more information:

Clarks Creek Greenway Planning Study

<https://publicinput.com/ClarksPlanning>

Advisory Councils

<https://www.mecknc.gov/ParkandRec/InsideTheDepartment/Pages/Advisory%20Councils.aspx>



A photograph of two children walking away from the camera on a paved path. The child on the left is wearing a blue t-shirt and red shorts. The child on the right is wearing a red t-shirt and grey shorts. The path is covered with fallen leaves, and there are trees and grass in the background.

Thank you!

## Contact:

Bert Lynn, RA, ASLA  
Director Capital Planning  
704-589-7491  
[Bert.Lynn@Mecknc.gov](mailto:Bert.Lynn@Mecknc.gov)

Gwen Cook, RA, ASLA  
Planner  
980-406-1504  
[Gwen.Cook@Mecknc.gov](mailto:Gwen.Cook@Mecknc.gov)

Darneka Waters, ASLA  
Planner  
980-722-2291  
[Darneka.Waters@MeckNC.gov](mailto:Darneka.Waters@MeckNC.gov)