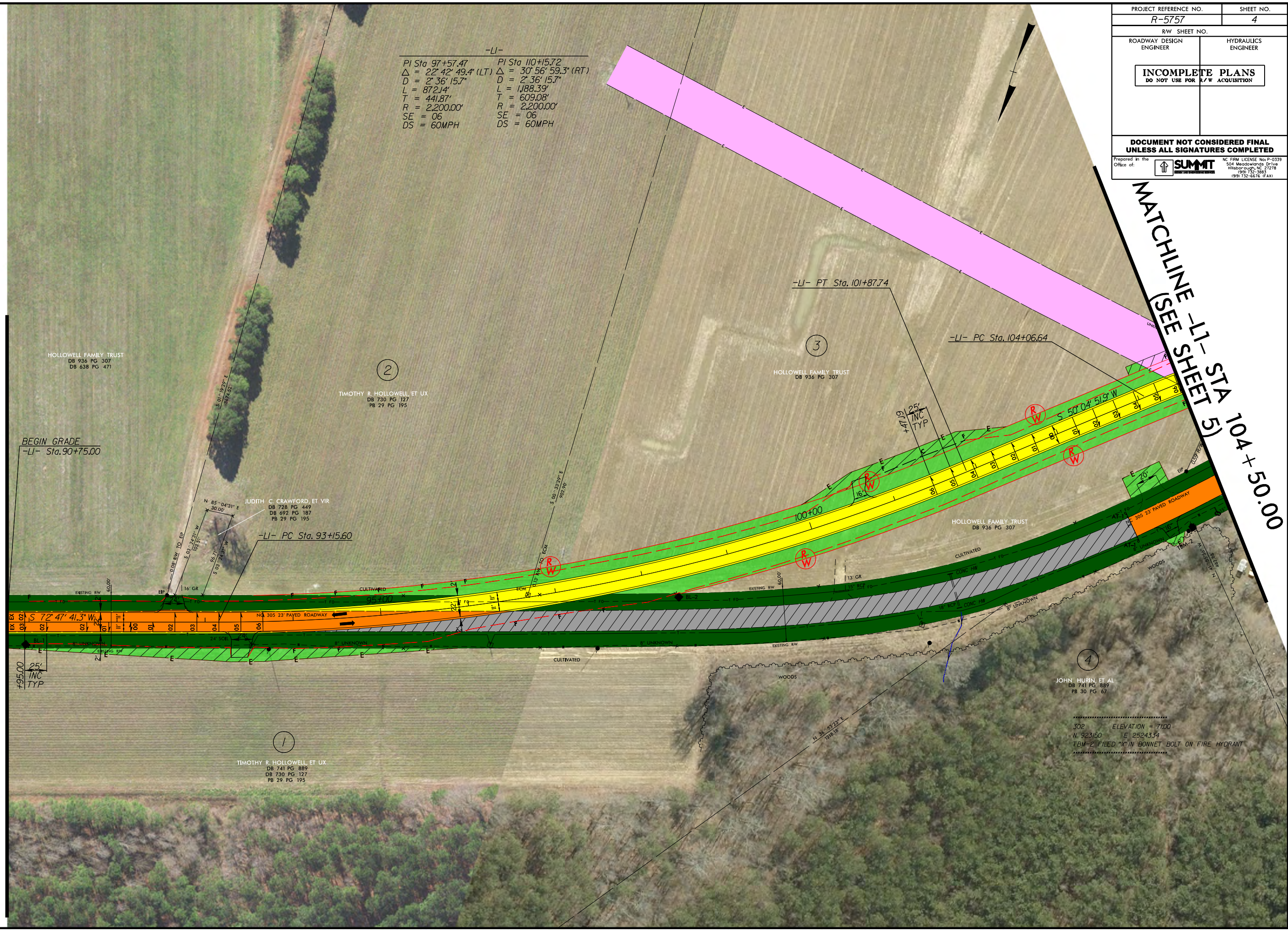


8/17/99

REVISIONS

8:55:59 R:\5757\ROAD\IMC\94_PHM.dgn
spencer.merrett

MATCHLINE -L1- STA 90+75.00



-L1-

PI Sta 97+57.47	PI Sta 110+15.72
$\Delta = 22^\circ 42' 49.4" (LT)$	$\Delta = 30^\circ 56' 59.3" (RT)$
D = 2' 36' 15.7"	D = 2' 36' 15.7"
L = 872.14'	L = 1,188.39'
T = 441.87'	T = 609.08'
R = 2,200.00'	R = 2,200.00'
SE = 06	SE = 06
DS = 60MPH	DS = 60MPH

PROJECT REFERENCE NO. R-5757	SHEET NO. 4
RW SHEET NO.	
ROADWAY DESIGN ENGINEER	HYDRAULICS ENGINEER
INCOMPLETE PLANS DO NOT USE FOR R/W ACQUISITION	
DOCUMENT NOT CONSIDERED FINAL UNLESS ALL SIGNATURES COMPLETED	
Prepared in the Office of: 	NC FIRM LICENSE No. P-0339 504 Meadowlands Drive Hillsborough, NC 27278 (919) 732-3881 (919) 732-6616 (FAX)

MATCHLINE -L1- STA 104+50.00
(SEE SHEET 5)

BEGIN GRADE
-L1- Sta. 90+75.00

+95.00
25'
INC
TYP

S 72° 47' 41.3" W

TIMOTHY R. HOLLOWELL, ET UX
DB 741 PG 889
DB 730 PG 127
PB 29 PG 195

-L1- PC Sta. 93+15.60

JUDITH C. CRAWFORD, ET VIR
DB 728 PG 449
DB 692 PG 187
PB 29 PG 195

HOLLOWELL FAMILY TRUST
DB 936 PG 307
DB 638 PG 471

TIMOTHY R. HOLLOWELL, ET UX
DB 730 PG 127
PB 29 PG 195

HOLLOWELL FAMILY TRUST
DB 936 PG 307

JOHN HURIN, ET AL
DB 741 PG 889
PB 30 PG 67

302 ELEVATION = 7100
N 923160 E 2524334
TBM-2 FILED "X" IN BONNET BOLT ON FIRE HYDRANT