



PUBLIC MEETING MAP

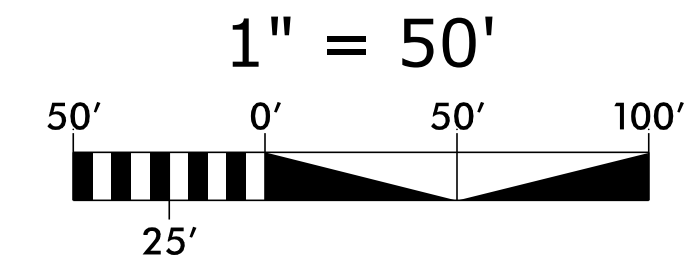
PROJECT 45565.1.1 (B-5610)
F. A. PROJECT NHP-0012(016)

DARE COUNTY

BRIDGE REPLACEMENT OF BRIDGE
No. 8 OVER THE SLASH ON NC 12



OCTOBER 2022



(ENGLISH)

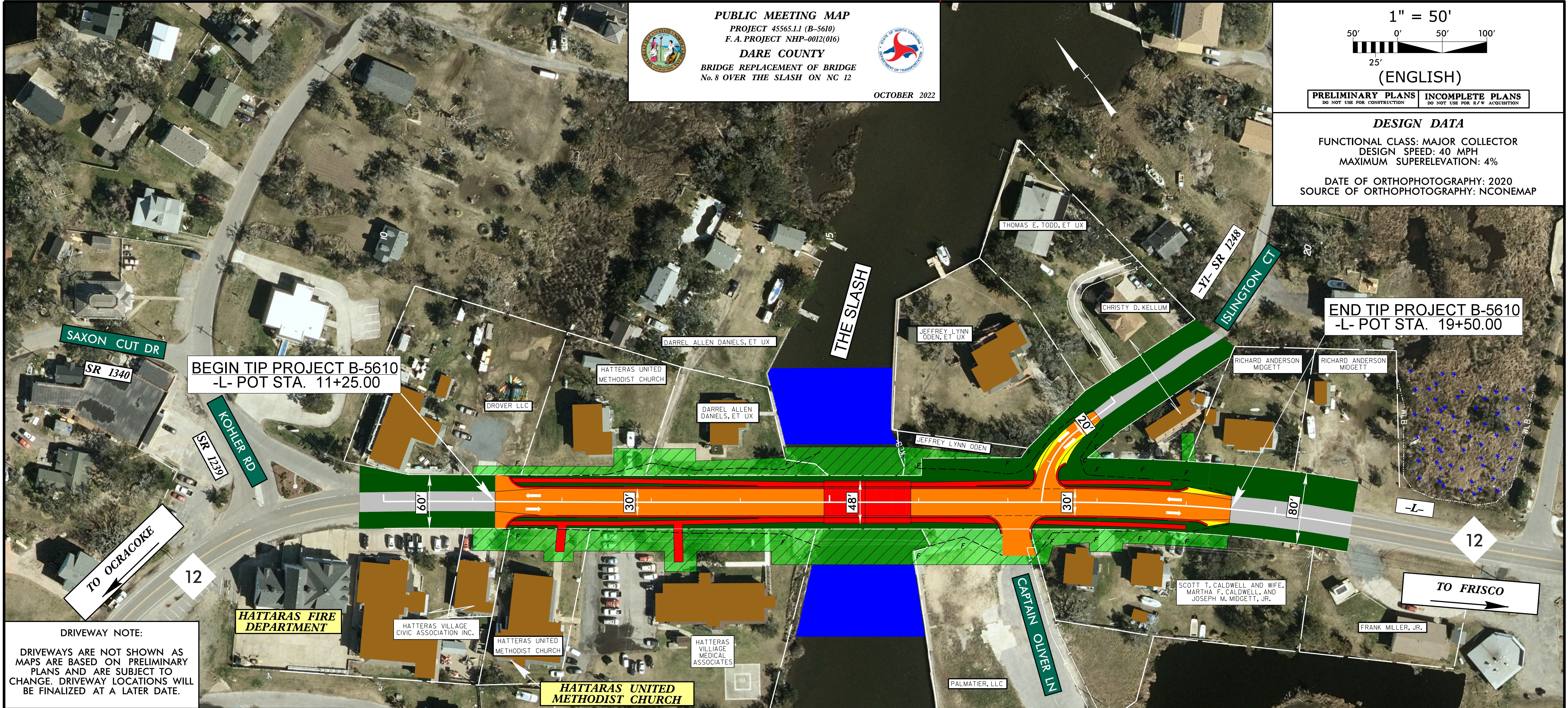
PRELIMINARY PLANS
DO NOT USE FOR CONSTRUCTION

INCOMPLETE PLANS
DO NOT USE FOR R/W ACQUISITION

DESIGN DATA

FUNCTIONAL CLASS: MAJOR COLLECTOR
DESIGN SPEED: 40 MPH
MAXIMUM SUPERELEVATION: 4%

DATE OF ORTHOPHOTOGRAPHY: 2020
SOURCE OF ORTHOPHOTOGRAPHY: NCONEMAP



DRIVEWAY NOTE:
DRIVEWAYS ARE NOT SHOWN AS MAPS ARE BASED ON PRELIMINARY PLANS AND ARE SUBJECT TO CHANGE. DRIVEWAY LOCATIONS WILL BE FINALIZED AT A LATER DATE.

UTILITY INFORMATION:
TO PROVIDE GREATER VISUAL CLARITY, EXISTING AND PROPOSED UTILITIES ARE NOT SHOWN ON THESE MAPS OR ON OTHER DISPLAYS. THE UTILITY INFORMATION SHOWN ON THESE MAPS IS LIMITED TO LOCATIONS OF MAJOR EXISTING AND POTENTIAL UTILITY EASEMENTS. THE DESIGNS SHOWN ON THESE MAPS, INCLUDING UTILITY EASEMENTS, ARE PRELIMINARY AND ARE SUBJECT TO CHANGE.

LEGEND

- BUILDINGS
- EXISTING RIGHT OF WAY
- PROPOSED EASEMENTS (DRAINAGE AND CONSTRUCTION)
- EXISTING ROADWAY
- EXISTING ROADWAY TO BE RESURFACED
- PROPOSED ROADWAY
- PROPOSED STRUCTURES, ISLAND, SIDEWALK, CURB AND GUTTER
- PROPERTY LINES
- LAKES, RIVERS, STREAMS AND PONDS
- WETLAND
- WETLAND LIMITS BOUNDARY
- PRESENT ADT
- FUTURE ADT

