



Tarboro Road Park Redevelopment Project Situation Assessment

NOVEMBER 2023

*Contents subject to change



Raleigh
Parks

raleighnc.gov/parks

Tarboro Road Park Redevelopment Project

Community Context Situation Assessment

November 2023

Table of Contents

Introduction.....	2
Project Overview.....	2
Site Context	4
Community Framework	6
Vicinity of Park	7
Demographic Analysis.....	8
Ten Minute Walk Demographic Analysis	9
Five Minute Drive Demographic Analysis.....	11
Community Engagement.....	13
Level of Participation	13
Community Stakeholders.....	15
Outreach Methodology.....	15
Community Advisory Group – Potential Members.....	16
Next Steps.....	17
Appendices	18
Appendix A: Community Advisory Group (CAG) Questionnaire	
Appendix B: Community Advisory Group Applications	
Appendix C: Brief History of Saint Monica Teen Center	
Appendix D: St. Monica’s School Historic Landmark Designation Report	
Appendix E: St. Monica’s School Historic Landmark Ordinance	



Introduction

The 2022 Raleigh Parks Bond allocated \$29.5m in funding for the redevelopment of Tarboro Road Park. Plans for Tarboro Road Park include a new community center, new site amenities, and improvements to the existing Saint Monica’s Teen Center. This *Community Context Situation Assessment* is an initial step in the project and sets the groundwork for future public engagement and project design.

A **Community Context Situation Assessment** is an analysis of the local context around a project. These assessment reports help Raleigh Parks planning and design staff determine the best means for effective engagement of the community, within a collaborative process. Situation assessments reports are used as an opportunity to identify key stakeholders, issues, and opportunities important to the community affected by the planning process. These reports can be an opportunity to study the historical and cultural context of a particular project or community and to proactively identify and address any issues that may be contentious during the planning process.

This Situation Assessment identifies the **Tarboro Road Park Community Advisory Group (CAG)**, a membership-specific committee that provides oversight of the project planning process and ensures that decisions include a broad representation of the community and stakeholders. CAG members help facilitate information sharing between the community and planning staff.

Project Overview

Tarboro Road Park is an existing 3.2-acre park at 121 N. Tarboro Road in east Raleigh, The park is approximately a half-mile from downtown and within Council District C. Tarboro Road Park was established in the 1970’s to serve the surrounding historically African American community. Today, the park hosts an active community center and the historic Saint Monica Teen Center.

The **Tarboro Road Community Center** has been enlarged incrementally over the past several decades to serve the recreational and educational needs of the expanding area. Current site amenities include a picnic shelter, tennis courts, and a playground constructed in the 1990’s. The current layout and

condition of the community center and amenities are no longer adequate to accommodate the needs of the growing and transforming community.

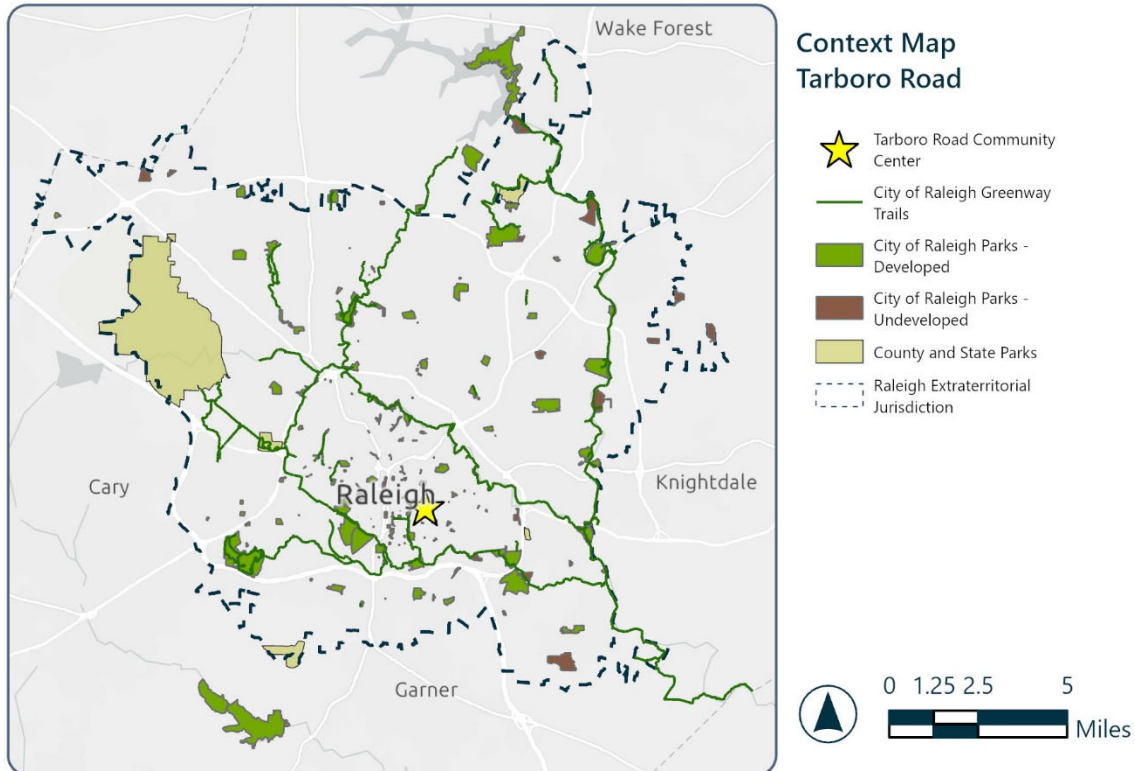
A 2019 internal City study of Tarboro Road Park proposed scope a new community center with an enlarged gymnasium and fitness facility; classrooms and multipurpose rooms; an office for district police; and associated operational, storage, and administration space. Site and recreational improvements, throughout the site, were also recommended.

The \$29,500,000 in funding from the 2022 City of Raleigh Parks Bond includes community engagement, design, permitting, and construction. In addition to a new community center, new and enhanced site features may include a playground, community gathering areas, court play spaces, landscaping, and support amenities such as parking and stormwater improvements. Improvements and upgrades to the Saint Monica Teen Center are also in the project.

In May 2023, the City released a Request for Qualifications package (RFQ) that included Tarboro Road Park and other 2022 Parks Bond projects. Current plans are for City Council to approve the design team contract in Fall 2023.

Project Schedule Summary

- Summer/Fall 2023: Situation Assessment and CAG Selection
- Fall 2023 – Fall 2024: Community Engagement and Schematic Design
- Fall 2024 – Spring 2026: Design and Permitting
- Summer 2026 – End 2028: Bidding and Construction



Site Context

Tarboro Road Park is a 3.2 acres park at the corner of Tarboro Road and East Edenton Street in east Raleigh. Except for the commercial East Edenton Street, the park is mostly situated in a single- and multi-family residential neighborhood.



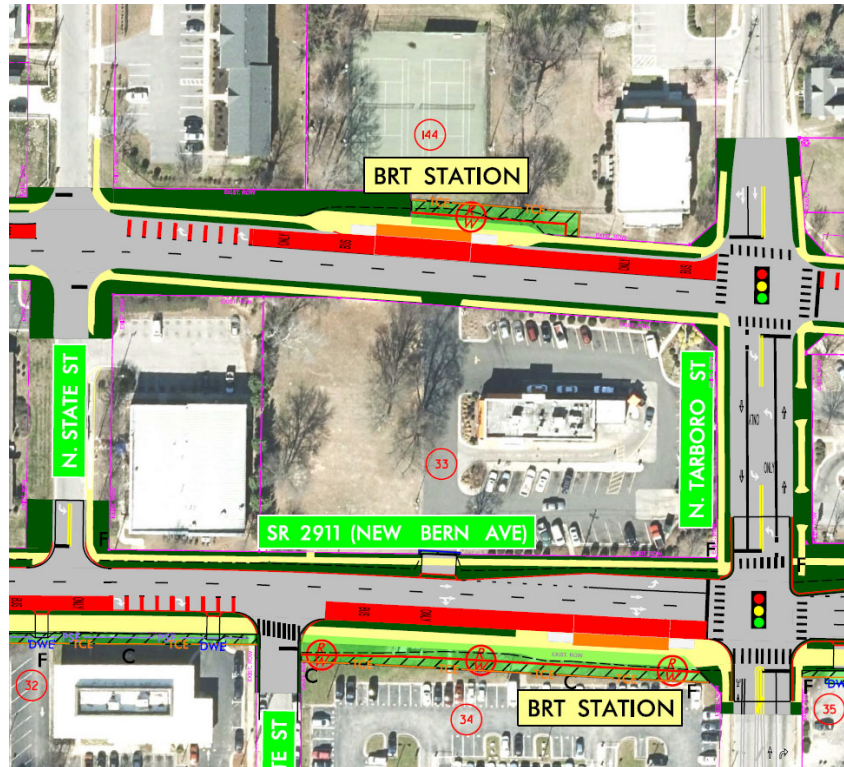
Tarboro Road Park, 2021 aerial photo (Wake County GIS - IMaps)

The community center is sited the park center with the St. Monica Teen Center in the southeast corner. The parking lot fronts the community center and wraps around the east and north sides of the site. Other existing facilities include two lighted tennis courts, a picnic shelter, and playground. The community center offers a variety of community and recreational programs and is open seven days a week. The building is composed of gymnasium, two meeting rooms, a warming kitchen, weight room, and small room for police (RPD) use.

The Saint Monica Teen Center building was originally built in 1930 as part of the Saint Monica Catholic School and later served as home to the New Bern Avenue Day Care. Teen Center, opened in 2011,

offers free membership and programming to middle and high school age teens. The building features a teen lounge, technology room, fitness and dance studio, and multipurpose kitchenette room.

East Edenton Street is proposed as a Bus Rapid Transit corridor (BRT) in the Wake Transit Plan connecting downtown Raleigh with WakeMed and New Hope Road. A BRT station is planned along the south property line of the park.



Planned BRT Station: Proposed Bus Rapid Transit line (BRT) along New Bern Ave./East Edenton St. with a proposed BRT station along the south property line of Tarboro Road Park. (Wake BRT New Bern Corridor, June 2021 Draft Plans, City of Raleigh Engineering Dept. and HNTB)

Community Framework

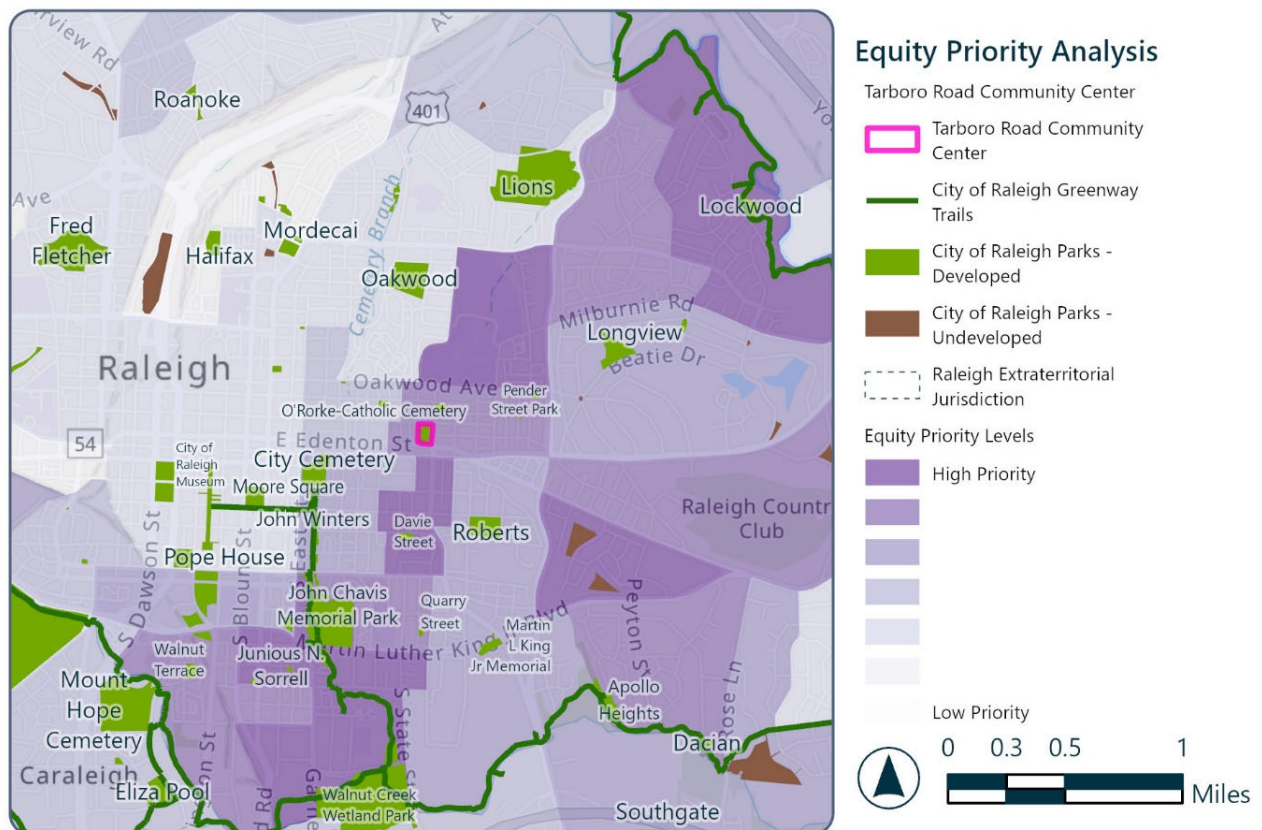
Equity Priority can be determined by analyzing five key indicators of community health and well-being, as defined by Wake County Human Services' Community Vulnerability Index:

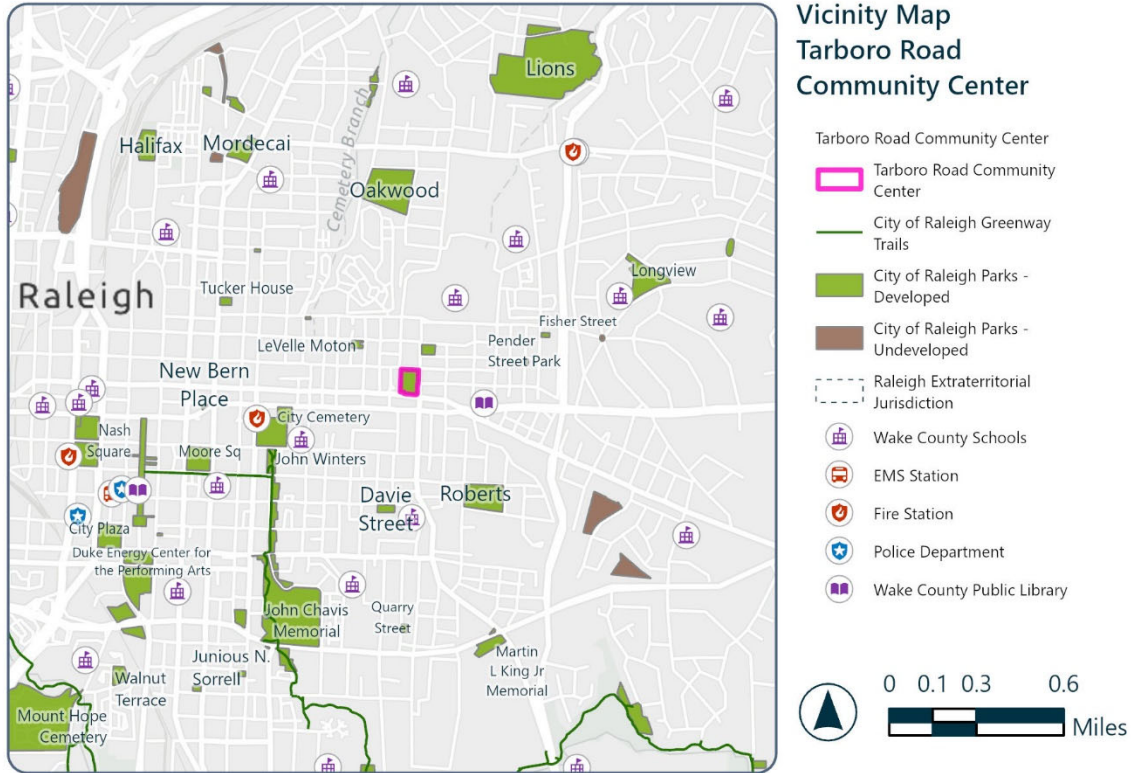
- Unemployment: Population age 16 and over who are unemployed in the civilian labor force
- Low Educational Attainment: Population over age 25 who have less than a high school diploma
- Age Dependency: Population under the age of 18 and over the age of 64 combined
- Housing Vacancy: The total number of vacant or unoccupied housing units in a block group
- Poverty Rate: The population living below the federal poverty threshold in Wake County

Communities exhibiting a high concentration of these five demographic and socioeconomic indicators are more likely to experience negative health outcomes such as heart disease, obesity, chronic stress, and depression—outcomes which can be mitigated with better access to high-quality open spaces, outdoor recreation, and safe places to play and exercise.

Prioritizing investments in these communities helps ensure that PRCR sites, facilities, and programs are more accessible to the communities that will benefit most from these public resources.

Tarboro Road Park is in an area of the City classified in the second highest level of Equity Priority.





Vicinity of Park

Existing developed parks near to Tarboro Road Park include:

- Davie Street Park, 0.5 mile south
- Roberts Park, 0.75 mile southeast
- Fisher Street Park and Pender Street Park, 0.5 mile east
- John Winters Park, 1.0 mile southwest
- John Chavis Memorial Park, 1.5 miles southwest
- Oakwood Park, 1.2 miles north

Other nearby parks include Lions Park, Longview Pool, Mordecai Historic Park, Moore Square, and Martin Luther King Memorial Park.

St. Augustine’s University is three blocks north of Tarboro Road Park. The Richard B. Harrison Community Library (Wake County) is located to the east of the park along New Bern Avenue. Area schools include Mary E. Phillips High School; The Exploris School: Elementary Campus; Hunter Elementary School; Longview School; Moore Square Magnet Middle School; and Ligon Magnet Middle School.

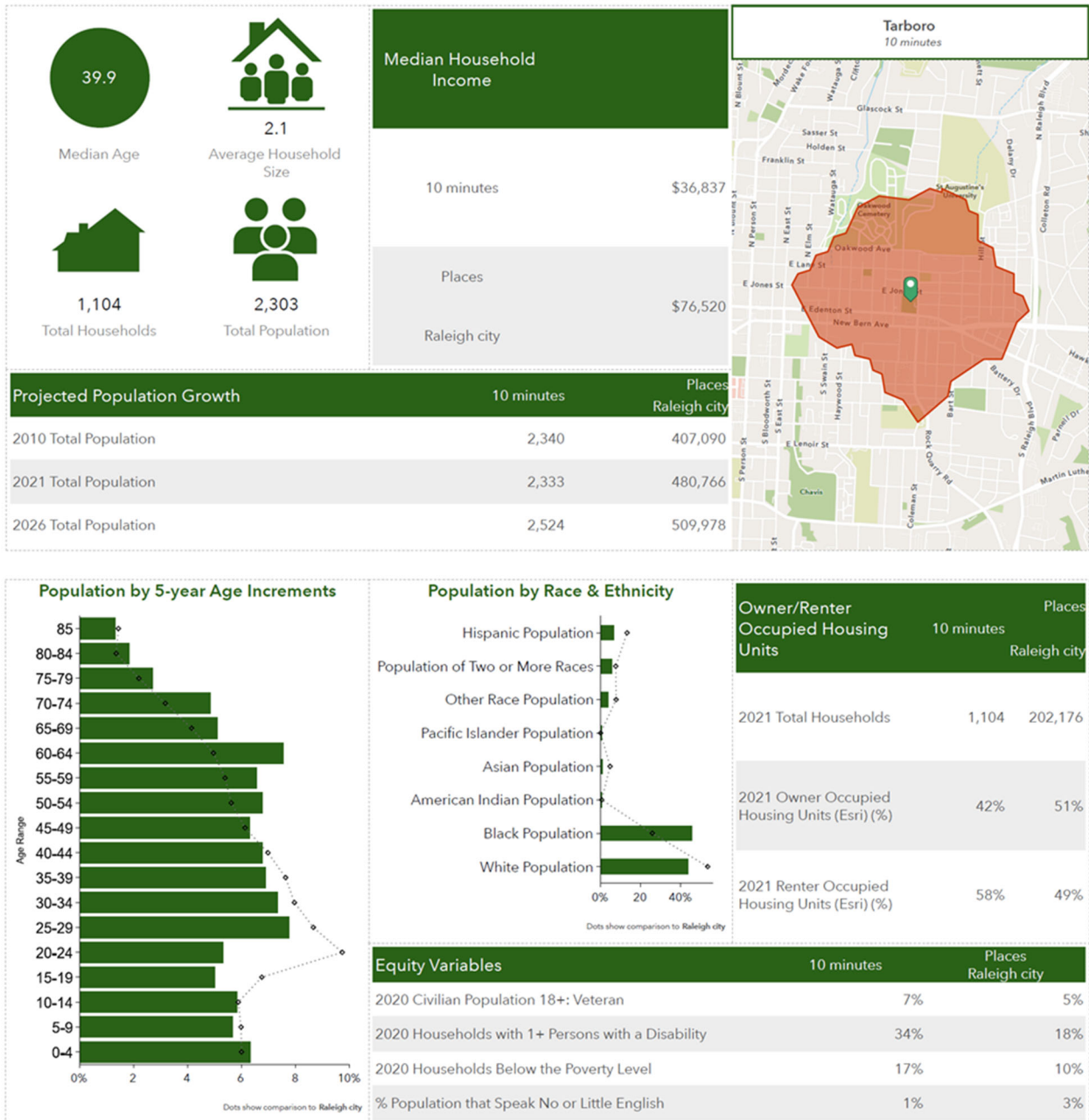
Demographic analysis reports of area within both a ten-minute walk and five-minute drive of the park are included in the Situation Analysis and help to better understand surrounding communities.

Demographic Analysis

A demographic analysis determines the best methods for engaging residents within the project outreach area and determines additional resources that may be required. By determining the diversity of a community, engagement staff can create participation methods that can engage different stakeholders productively and create a more inclusive engagement environment.

Demographic Profile Engagement Considerations	
<p>Race</p> 	<p>If there is a notable presence of people of color and/or immigrant groups, then consider the following:</p> <ul style="list-style-type: none"> • Are there any cultural, religious, political, or historical factors that may influence or serve as barriers to their engagement? (ex: appropriate meeting venues, meeting times/dates, perception of safety in government interactions, etc.). If possible, consider contacting community leaders to identify best methods to engage these groups. • Is it possible that these groups could be disproportionately or adversely impacted by the final decision? If yes, consider conducting small group meetings with these groups to identify ways to avoid or mitigate potential negative or adverse impacts.
<p>Poverty</p> 	<p>If there is a notable presence of low income and/or zero car households, consider:</p> <ul style="list-style-type: none"> • Holding meetings at multiple times of day and on weekends to accommodate shift workers. • Holding meetings in geographically accessible locations and/or providing transportation to/from meetings. • Offering child care and refreshments. • Ensuring that all online outreach uses mobile friendly platforms and do not require application downloads to view.
<p>LEP</p> 	<ul style="list-style-type: none"> • According to N.C. Department of Transportation standards, if at least 50 adults of a Block Group's population within a language group speak English less than very well, then it is recommended that oral interpreters be provided at meetings and targeted media advertising be used to reach these individuals. • Federal guidelines state that if a language group that speaks English less than very well exists within the outreach area that either has 1,000 adults or makes up 5% of the aggregate population (with at least 50 adults), then translated meeting and notification materials should be provided.
<p>Disability</p> 	<p>After reviewing disability status data, if there are residents with disabilities within the project outreach area, consider:</p> <ul style="list-style-type: none"> • Providing American Sign Language (ASL) interpreters at public meetings by participant request (see the access to language services and disability accommodations statement on p. 5). • Following ADA accessible recommendations for print and visual materials. • Providing phone-in lines or video conferencing sessions for public meetings. • Providing staff to assist disabled participants. • Holding meetings in accessible venues. • Including a request for accommodations statement on all meeting notices. • Following Web Content Accessibility Guidelines 2.0 (WCAG 2.0) for all online meeting content.
<p>Age</p> 	<p>If there is a notable presence of senior residents, consider:</p> <ul style="list-style-type: none"> • Limiting the use of online or social media outreach and instead use direct mailers. • Following ADA accessible recommendations for print and visual materials. <p>If there is a notable presence of youth, consider:</p> <ul style="list-style-type: none"> • Incorporating methods to obtain their input through essays, poster contests, video submissions, or interactive visioning exercises during public meetings.
<p>Housing</p> 	<p>If there are renters living in the project outreach area, consider:</p> <ul style="list-style-type: none"> • Ensuring that all mailed notices are sent to the property owner AND physical address. • Asking apartment property managers to distribute notices using their communication channels and/or to host popup events to allow the project team to engage residents.

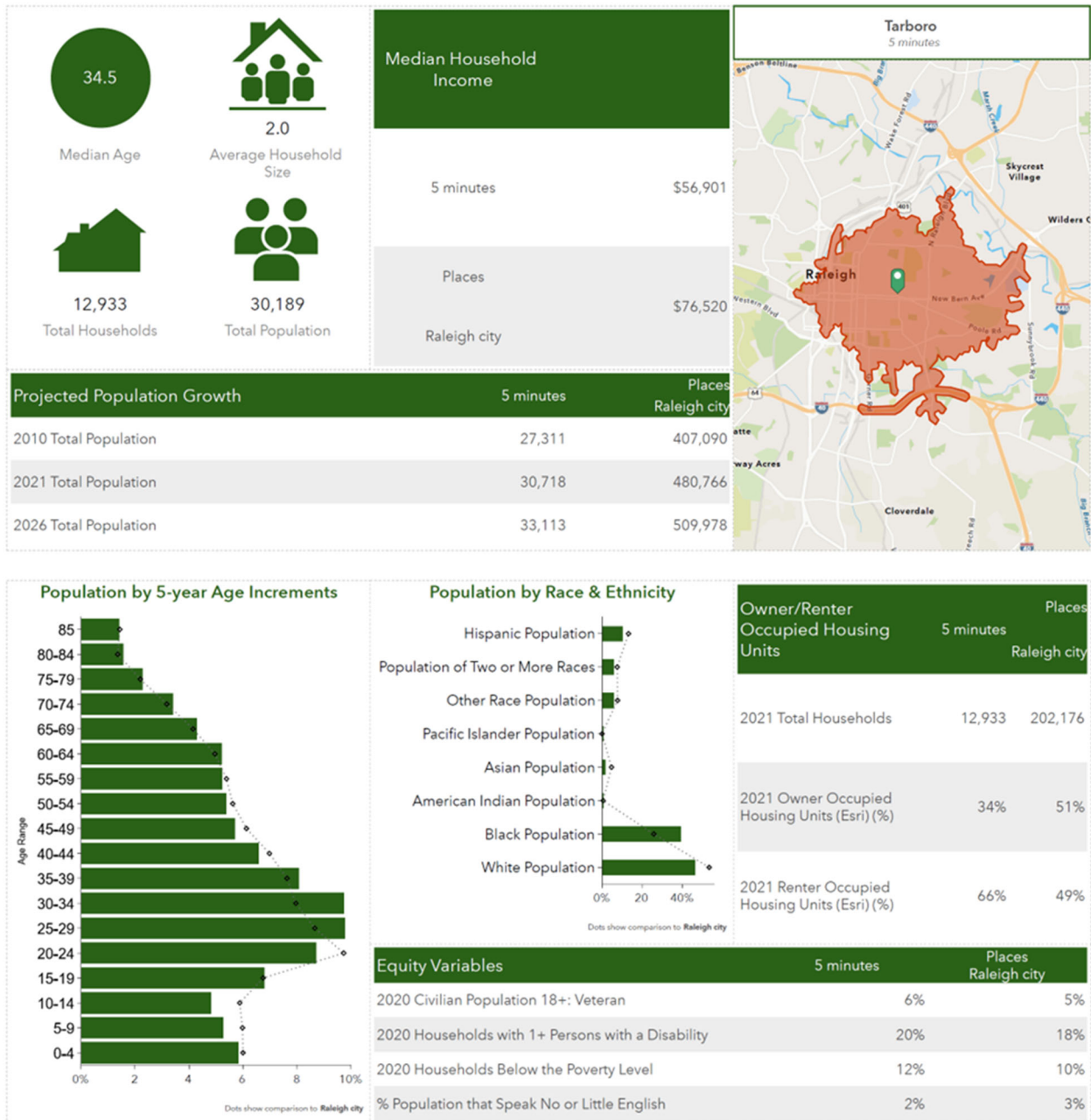
Ten Minute Walk Demographic Analysis



- There are 2,303 people (1,104 households) within a **ten-minute walk** from Tarboro Road Park (2021 data).
 - By 2026, this population is expected to increase to 2,524 (10% increase).
- This population has a median household income of \$36,837, less than half of the city-wide median of \$76,520.
 - 17% of households are below the poverty line (10% city-wide).

- Population by race/ ethnicity shows a slightly higher percentage of Black population than White population with lower percentages of Hispanic and other races/ethnicities.
- There is a fairly even distribution of ages in both the over 25- and under 70-year adult population with also a fairly-even distribution in the under 25-year age group.
 - Population does not start to significantly decrease until the over 75-year groups.
- Within this population:
 - higher level of renters (58%) compared to owner-occupied housing units (42%)
 - 34% of households have at least one person with a disability, compared to 18% city-wide
 - 1% speak limited to no English, compared to 3% city-wide

Five Minute Drive Demographic Analysis



- There are 30,189 people (12,933 households) within a **five-minute drive** from Tarboro Road Park (2021 data).
 - By 2026, this population is expected to increase to 33,113 (10% increase).
- This population has a median household income of \$56,901, less than the city-wide median of \$76,520.
 - 12% of households are below the poverty line (10% city-wide).

- Population by race/ ethnicity shows a slightly higher percentage of White population than Black population with lower percentages of Hispanic and other races/ethnicities.
- Within the age distribution, there is a spike in the over-20 and under-40 years age groups. There is an even distribution of ages in both the over-40- and under 65-year adult population with also a fairly-even distribution in the under-20 age groups.
 - Population starts to decrease within the over-65 year groups.
- Within this population:
 - significantly higher level of renters (66%) compared to owner-occupied housing units (34%)
 - 20% of households have at least one person with a disability, compared to 18% city-wide
 - 2% speak limited to no English, compared to 3% city-wide

Community Engagement

This Community Context Situation Assessment has been developed to help the project team understand the social context of project areas and identify the best ways to effectively engage the community in a collaborative process.

Public engagement fulfills the City’s commitment to Raleigh residents by defining goals, identifying the needs of communities, and determining key audiences. It creates an opportunity for City staff to ensure that the decisions made reflect the needs of residents and provides a platform for residents to guide those decisions.

Level of Participation

Planning for the public engagement process is a crucial step in ensuring that engagement efforts are effective. Defining the goals and objectives for the public engagement process provides clarity about the engagement process. It is necessary to identify the role of the public and the level of its participation in the decision-making process to determine what type of public engagement is needed to reach decisions.

The **International Association for Public Participation (IAP2)** was designed to assist with the selection of the level of participation that defines the public’s role and the public participation goal that will drive the engagement process. Each level of public participation and the accompanying goal on the spectrum suggests that a commitment is being made to the public, and that the agency promises to take the identified action that will achieve the goal of the level selected.



Raleigh Parks uses the *Public Participation Policy for Park Planning, January 2021* to guide the community engagement process. This policy describes the roles and responsibilities of Citizens and the Raleigh Parks, Recreation, and Cultural Resources Department in working together to plan, design, and develop parks, greenways, and recreation facilities.

This policy document is associated with the *Public Participation Playbook, July 2020*, which provides guidance on best practices, operating procedures, template documents for use during park planning projects, and further describes roles and responsibilities for specific process formats.

*This project will be using the **Collaborate** level of participation. This emphasizes the partnership between community members and the City of Raleigh, wherein a level of decision-making control is delegated to the community involved.*







A cross-departmental project team has collaborated to explore the appropriate level of participation and identify external stakeholder groups for outreach and engagement for these projects. City staff and the design team will partner with community members in each aspect of the decision, including the development of alternatives and the identification of the preferred solution.

The **Collaborate** level of participation recommends utilization of a Community Advisory Group (CAG), a group that works in partnership with city staff and professional consultants to ensure that the park design and elements meet the specific needs and preferences of the community.

Collaborate promise to the public: We will look to the community for advice and innovation in formulating solutions and will incorporate the advice and recommendations into the decisions, to the maximum extent possible.

Public engagement for the Tarboro Road Park Redevelopment Project is expected to last 12 months. This engagement will center around engagement of the CAG and the public on multiple interactive and informational sessions with the project design team.

Chart 1: IAP2 Spectrum of Participation

Increasing level of participation 					
	 Inform	 Consult	 Involve	 Collaborate	 Empower
Public Participation Goal	To provide the public with balanced and objective information to assist them in understanding the problem, alternatives, opportunities and/or solutions.	To obtain public feedback on analysis, alternatives and/or decisions.	To work directly with the public throughout the process to ensure that public concerns and aspirations are consistently understood and considered.	To partner with the public in each aspect of the decision including the development of alternatives and the identification of the preferred solution.	To place final decision making in the hands of the public.
Promise to the Public	We will keep you informed.	We will keep you informed, listen to and acknowledge concerns and aspirations, and provide feedback on how public input influenced the decision.	We will work with you to ensure that your concerns and aspirations are directly reflected in the alternatives developed and provide feedback on how public input influenced the decision.	We will look to you for advice and innovation in formulating solutions and incorporate your advice and recommendations into the decisions to the maximum extent possible.	We will implement what you decide.
Example of Tools	Fact sheets, websites, open houses, mailings, social media	Public comment, focus groups, surveys, public meetings	Workshops, deliberative polling	Stakeholder advisory committees, consensus-building, participatory decision-making	Stakeholder Resident juries, ballots, delegated decisions

(Source: Planning for Effective Public Participation, Foundations in Public Engagement, IAP2 International Federation 2016, p.29-30)

IAP2 Spectrum Chart

Community Stakeholders

The collaborative partnership will be achieved through the establishment of a Community Advisory Group (CAG) with diverse members representing their communities. The CAG members will assist with the project planning process and bridge communication between the project teams and the public.

City staff identified area stakeholder groups for outreach and engagement including, but not limited to, the following:

- Area businesses
- Area renters and homeowners
- Faith-based community groups and churches
- Former North Central and South Central Citizen Advisory Councils leadership
- K-12 Schools and day cares
- Park patrons and program registrants including Tarboro Road Community Center and Saint Monica Teen Center patrons
- Raleigh Youth Council
- Saint Augustine’s University
- Mayor's Committee for Persons with Disabilities
- Raleigh Community Engagement Board
- Hispanic and Immigrant Affairs Board
- Environmental Advisory Board
- Arts Commission & Public Art & Design Board
- Bicycle and Pedestrian Advisory Commission

Outreach Methodology

The call for CAG membership was advertised through in-person and City multi-media communication methods. Membership enrollment remained open for two months (July-August 2023).

Outreach methods promoting the Tarboro Road Park project and CAG membership included:

- Bilingual yards signs at the Tarboro Road Park and other nearby parks
- Bilingual project flyers, posters, and CAG applications at
 - Tarboro Road Community Center
 - St. Monica Teen Center
 - Raleigh Municipal Building
- Project websites at raleighnc.gov and Engage Raleigh (engage.raleighnc.gov)
- Press release and social media announcements
- Raleigh Parks weekly digital newsletter

In addition to community members, the CAG membership will include two representatives from Parks, Recreation and Greenway Advisory Board (PRGAB).

Community Advisory Group – Potential Members

31 CAG applications were received by the August 31, 2023 deadline. The *Public Participation Playbook* recommends choosing 5 – 12 residents, depending on project scope, who are of different races, incomes, and educational backgrounds. Other criteria include residency in the service area of the park; a willingness to commit the time to attend meetings; having an interest in the park and its uses; and embody diverse demographics and interests.

A selection panel, composed of PRGAB members and City board members¹, shortlisted a recommended list of CAG applicants in early September 2023. Raleigh Parks will present the potential member list to the Parks, Recreation and Greenway Advisory Board (PRGAB) Parks Committee on October 5, 2023. Staff will then present the list to the at-large PRGAB on November 16, 2023 for final approvals.

In addition to community members, the CAG membership will include two member representatives from PRGAB.

Recommended CAG Membership

Public Members

- Shaneka Brightwell
- Morgan Camu
- Will Choi
- Asher Gannon
- Peter Flint
- Jared Harber
- Jeff Lackey
- LaQuana Palmer
- Octavia Rainey
- Helen Tart
- Blair Watson

PRGAB Representatives

- April Love
- Kara Strang

¹ Historic Resources and Museum Advisory Board, Arts Commission and Public Art Design Board, and Community Engagement Board

Next Steps

Following PRGAB's approval of CAG membership and execution of the City's contract with the design consultant team, the community engagement and schematic design process is planned for kick-off in late Fall 2023/early 2024.

The level of participation for this project is Collaborate, focusing on consensus-building and participatory decision making. The engagement strategy is expected to last one year and will involve multiple interactive and informative meetings with the CAG and community. CAG and public workshops, community meetings, and surveys will coincide with the project's schematic design phases.

- November 2024 - Tarboro CAG presented to PRGAB for approval
- January 2024 - Design consultant contract award (Council)
- 12-month engagement process (following design consultant contract execution)
- Schematic Design to PRGAB and Council for review and approval

Overall Project Schedule

- Summer/Fall 2023: Situation Assessment and CAG Selection
- Winter 2024 – Winter 2025: Community Engagement and Schematic Design
- 2025 – 2026: Design and Permitting
- 2026 – 2028: Bidding and Construction

Appendices

Appendix A: Community Advisory Group (CAG) Questionnaire

In Summer 2023, the call for CAG membership was advertised through in-person and City multi-media communication methods. Membership enrollment remained open for two months (July-August 2023) and was available in both online and hardcopy formats.

Hardcopy questionnaires were available at the Tarboro Road Community Center, St. Monica Teen Center, and Raleigh Municipal Building.

Raleigh Parks is currently seeking members for the Tarboro Road Park Community Advisory Group.

Residents interested in being in the Community Advisory Group are encouraged to respond to the following “CAG Interest Questionnaire.”

An on-line version of the questionnaire is available at: <https://publicinput.com/tarborocag>

Background and Project Description

The voter-approved 2022 Raleigh Parks Bond includes the Tarboro Road Park Redevelopment Project. Plans for the Tarboro Road Park include a new community center, new site amenities, and improvements to the existing Saint Monica Teen Center.

The City of Raleigh Parks, Recreation and Cultural Resources Department proposes the establishment of a project Community Advisory Group (CAG). The CAG will collaborate with City staff and the project design consultants to ensure the proposed program and elements best meet the needs of the community around Tarboro Road Park.

Purpose and Authority of the CAG

The purpose of the Tarboro Road Park Redevelopment Project CAG is to represent community interests and validate and report design recommendations to the Parks, Recreation and Greenway Advisory Board (PRGAB).

Note: CAG membership is a volunteer-based position. The PRGAB will plan to appoint CAG membership at their November 2023 meeting.

CAG Roles and Responsibilities

The key responsibilities of the CAG members are to:

- Represent and consider the interests of the community
- Assist with public outreach and communication
- Review, analyze, prioritize, and incorporate public input
- Provide constructive comments and shape agreements to advance design process
- Balance interests, resolve conflicts, and collaborate in the development of schematic designs

Expectations for the CAG members include:

- Attending and fully participating in CAG and public meetings
- Working as team players; Respecting and seeking to comprehend the perspectives of others

Tarboro Road Park Redevelopment Project – Community Advisory Group Interest Questionnaire

- Encouraging free thinking and focus on problem solving
- Communicating with represented community groups and keep group members informed of project progress
- Providing at least one means of contact for timely communication such as email or phone number

CAG Communication

Open communication is encouraged among the CAG members and between the members and the public. City staff project managers serve as the primary point of contact for the CAG regarding project communication such as feedback gathering, meeting logistics, and meeting minutes documentation and dissemination. City staff project managers are responsible for submitting proposed schematic designs for individual Board, Commission, and Council reviews and deliberation.

CAG members may participate in or assist with presentations at Board, Commission, and Council meetings. All CAG meetings will be open to observation by the public and will be prepared to receive public comments. The CAG can also receive public comments in writing or via email.

CAG Representation, Appointment, Withdrawal, and Replacement

The CAG membership is intended to be diverse, inclusive, and representative of the local community. The CAG is comprised of community members representing varied groups or individuals with interest in the proposed projects. Membership is to be reflective of the current demographics of the project area including age, race, gender, education background, professional and/or personal experience, interest, expertise, and other relevant qualifications that may be related to the proposed Tarboro Road Park Redevelopment Project.

A cross-departmental project team and PRGAB board members will compile and review the results of the questionnaire process. PRGAB will appoint CAG membership at their November 2023 meeting.

If a CAG member is no longer able to participate during the project process, they may withdraw from the CAG. The CAG members then determine whether the withdrawn member's interests can be represented by the remaining members. If not, the CAG may recommend a replacement from the initial CAG applicants who represents the same interest group, organization, or neighborhood.

Schedule and Duration

The initial project planning and engagement process is anticipated from Fall 2023 through Fall 2024 (one year). A series of CAG meetings will take place throughout the planning process along with general public engagement events. All members are expected to attend and fully participate in each CAG meeting, which is critical to avoid project delays or backtracking. Meeting time, location, and format will be discussed with CAG members at the initial meeting. At least 50% of the meetings are expected to be held in person to encourage full engagement.

2022 Parks Bond
Tarboro Road Park Redevelopment Project - Community Advisory Group
Community Advisory Group Interest Questionnaire

The City of Raleigh Parks, Recreation and Cultural Resources Department is soliciting volunteers to serve on a Community Advisory Group (CAG) for the Tarboro Road Park Redevelopment Project, part of the voter-approved 2022 Parks Bond. The Parks, Recreation and Greenway Advisory Board will appoint CAG membership at their November 2023 meeting.

The following information will assist in forming a diverse CAG representing project interests. If you are interested in serving on this CAG, please complete the following questionnaire. **Note an online questionnaire is available at: <https://publicinput.com/tarborocag>**

- **In unable to fill out the online questionnaire, please fill out the form below and return to:**
 - Tarboro Road Community Center, 121 N. Tarboro Street, Raleigh, NC 27610
 - Parks, Recreation and Cultural Resources Department, 222 West Hargett Street, Suite 608 (6th Floor reception desk), Raleigh, NC 27601
 - Mail: Parks, Recreation and Cultural Resources, P.O. Box 590, Raleigh, NC 27602

Note that this application period will end at the end of August 2023.

>>>>>>>>> **THANK YOU!** <<<<<<<<<<

Name: _____

Organization/Neighborhood Represented: _____

Home address: _____

What is the best method to contact you?

- Telephone (personal): _____
- Telephone (work): _____
- Email address: _____
- Other: _____

1. **Why do you want to serve on the CAG?**
2. **If you represent an organization or a civic group, what is the role of your organization or the group in the community?**
3. **If you represent a neighborhood, how would you describe the residents in your neighborhood? To what extent do you see that changing in the future?**
4. **Do you have special knowledge or experience in park planning, recreation programming or historic resources, or special skills, interests, or background that you feel would help the CAG? If so, please describe.**
5. **Please suggest other key individuals or organizations we should reach out to for potential CAG membership for this project.**
6. **Please share any other comments or ideas about the CAG and general community engagement for these three projects.**
7. **Are you a City of Raleigh resident?**
 - Yes
 - No
8. **How long have you lived at your current address?**
 - Less than a year
 - 1 – 4 years
 - 5 – 9 years
 - 10+ years
9. **Which age group describes you?**
 - Under 23
 - 24-54
 - Over 55
 - Prefer not to disclose
10. **Which of the following describes your gender?**
 - Female
 - Male

- Non-Binary
- Prefer to Self-Describe: _____
- Prefer not to disclose

11. Which of the following is the highest level of education you have completed?

- Less than high school graduate
- High school diploma or equivalent (GED)
- Special/Technical training (not college)
- Some college (no degree)
- Associate degree
- Bachelor's degree
- Graduate/Professional degree (Master's, PhD, Juris Doctor, etc.)
- Prefer not to disclose

12. Which of the following best describes your race?

- Asian/Pacific Islander
- Black or African American
- Native American
- White
- Multi-racial
- Other: _____
- Prefer not to disclose

13. Are you of Hispanic, Latino, or Spanish ethnicity?

- Yes
- No
- Prefer not to disclose

14. What is the primary language you speak?

- English
- Spanish
- Other
- Prefer not to disclose

End of Questionnaire – Thank you

Appendix B: Community Advisory Group Applications

Information below is from the Tarboro Road Park Redevelopment Project - Planning Process web page (<https://engage.raleighnc.gov/tarbororoadpark>)

As part of the voter-approved 2022 Raleigh Parks Bond, funding is allocated for the redevelopment of [Tarboro Road Park](#) at 121 N. Tarboro Road in Raleigh. Plans for the Tarboro Road Park Redevelopment Project include a new community center, new site amenities, and improvements to the existing Saint Monica Teen Center.

Tarboro Road Park is an existing 3.2-acre park site approximately half mile east of downtown Raleigh and at the corner of Tarboro Road and East Edenton Street.

The park was established in the 1970's to serve the surrounding historically African American community. Today it is the host to a heavily used community center and the historic Saint Monica Teen Center. Site amenities include a picnic shelter, tennis courts, and a playground constructed in the 1990's.

Since the establishment of the Tarboro Road Community Center, it has been enlarged incrementally over the past several decades to serve recreation and education needs of the expanding neighborhoods. The current layout and condition of the facilities are no longer adequate to accommodate the needs of the growing and transforming community.

Redevelopment of Tarboro Road Park

The redevelopment of Tarboro Road Park is funded via the 2022 City of Raleigh Parks Bond in the amount of \$29,300,000 for community engagement, design, permitting, and construction. Redevelopment of the park will center around a new community center and may include new playground, community gathering areas, court play space, landscaping, parking, and stormwater improvements. The project also includes improvements and upgrades to the historic Saint Monica Teen Center.

Overall Project Timeline

- Summer/Fall 2023: Situation Assessment/CAG formation
- Fall 2023 – Fall 2024: Community Engagement and Schematic Design
- Fall 2024 – Summer 2026: Advanced Design and Permitting
- Fall 2026 – Fall 2028: Bidding and Construction

Project websites:

- <https://raleighnc.gov/parks/places/tarboro-road-park>
- <https://raleighnc.gov/projects/tarboro-road-park>
- <https://engage.raleighnc.gov/tarbororoadpark>

Public engagement for the Tarboro Road Park Redevelopment Project will follow the Collaborate Pathway, as outlined in the [City of Raleigh Public Participation Playbook](#).

The Collaborate Pathway emphasizes the partnership between community members and the City where a level of decision-making control is delegated to the community involved.

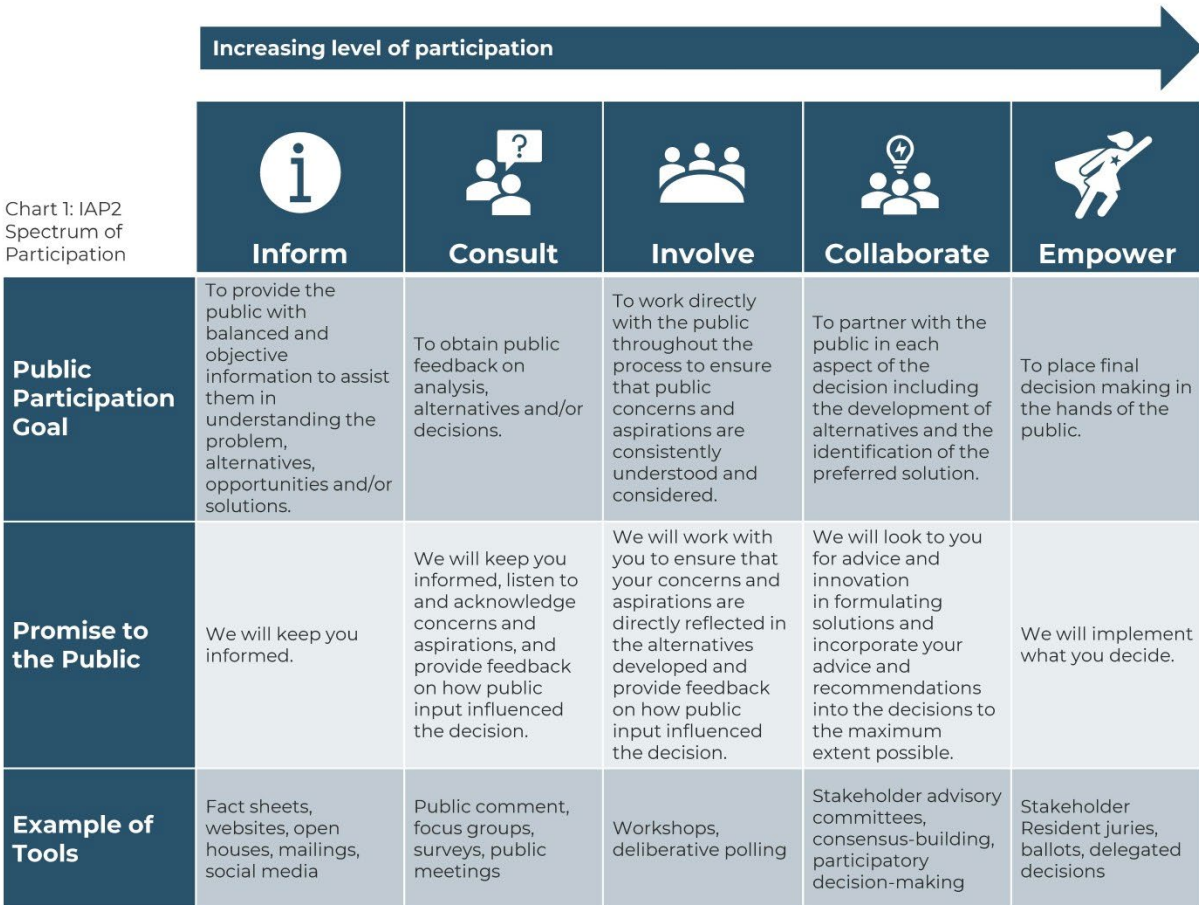
Public involvement in the Collaborate Pathway involves a [Community Advisory Group](#) (CAG), which is a membership-specific committee that provides oversight of the project planning process and ensures that decisions include a broad representation of the community and stakeholders impacted by the project. CAG members help facilitate information sharing between the community and park planning staff.

Decision-making often takes the form of consensus, which requires differing interests to work together to develop a common and mutually acceptable solution. While final decision-making authority rests with elected officials, the public can influence decision-making and assist Raleigh Parks in making informed choices by helping

Tarboro Road Park Redevelopment Citizens Advisory Group – Application Responses

to define the problem, generate a range of alternatives, develop evaluation criteria, and make recommendations.

The [Public Participation Policy for Park Planning](#) includes the Raleigh City Council’s policy statement for citizen involvement in park planning; eleven guiding principles of public participation; and an outline of the planning and community engagement process for park development activities.



(Source: Planning for Effective Public Participation, Foundations in Public Engagement, IAP2 International Federation 2016, p.29-30)

Citizen Advisory Group - Questionnaire Information

Application run time: July 10 – August 31, 2023

CAG online application: <https://engage.raleighnc.gov/tarborocag>

In addition to the main PublicInput.com online application questionnaire, paper copies of the application were also available at the front desk of the Tarboro Road Community Center, St. Monica Teen Center, and the Raleigh Municipal Building, Suite 608 (PRCR reception desk).

The CAG will be appointed by the Parks, Recreation and Greenway Advisory Board (PRGAB) at their November 2023 meeting.

Purpose and Authority of the CAG

The purpose of the Tarboro Road Park CAG is to represent community interests and validate and report design recommendations to the Parks, Recreation and Greenway Advisory Board (PRGAB).

Note: CAG membership is a volunteer-based position.

CAG Responsibilities

The key responsibilities of the CAG members are to:

- Represent and consider the interests of the community
- Assist with public outreach and communication
- Review, analyze, prioritize and incorporate public input
- Provide constructive comments and shape agreements to advance design process
- Balance interests, resolve conflicts and collaborate in the development of schematic designs

Expectations for the CAG members include:

- Attending and fully participating in CAG and public meetings
- Working as team players
- Respecting and seeking to comprehend the perspectives of others
- Encouraging free-thinking and focusing on problem solving
- Communicating with represented community groups and keeping group members informed of project progress
- Providing at least one means of contact for timely communication, such as email or phone number

CAG Communication

Open communication is encouraged among both the CAG members and between the CAG members and the public. City staff project managers will serve as the primary point of contact for the CAG regarding project communication such as feedback gathering, meeting logistics, and minutes documentation and dissemination. City staff project managers are responsible for submitting the proposed schematic design for individual Board, Commission, and City Council reviews and deliberation.

CAG members may participate in or assist with presentations at Board, Commission, and Council meetings. Such meetings are open to all CAG members. All CAG meetings will be open to observation by the public and will be prepared to receive public comments. The CAG can also receive public comments in writing or via email.

CAG Representation, Appointment, Withdrawal and Replacement

CAG membership is intended to be diverse, inclusive, and representative of the local community. The CAG is comprised of community members representing varied groups or individuals with interest in the proposed projects. Membership is to be reflective of the current demographics of the project area including age, race, gender, education background, professional and/or personal experience, interest, expertise, and other relevant qualifications that may be related to the proposed Tarboro Road Park Redevelopment Project.

Tarboro Road Park Redevelopment Citizens Advisory Group – Application Responses

Interested residents are encouraged to respond to the “CAG Interest Questionnaire”, available on this site and advertised via multi-media communication methods city-wide with a special focus in the neighborhoods around Tarboro Road Park. A cross-departmental project team and PRGAB board members will compile and review the results of the questionnaire process and present their recommendation of membership selection to the at-large PRGAB for approval and appointment.

If a CAG member is no longer able to participate during the project process, they may withdraw from the CAG. The CAG members then determine whether the withdrawn member’s interests can be represented by the remaining members. If not, the CAG may recommend a replacement from the initial CAG applicants who represents the same interest group, organization, or neighborhood.

Schedule and Duration

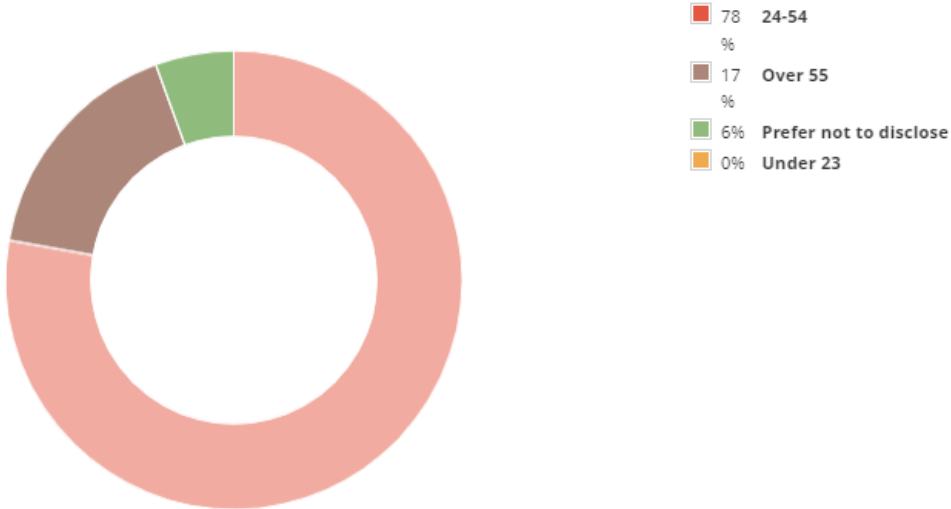
The initial project planning and engagement process is anticipated from Fall 2023 through Fall 2024 (one year). A series of CAG meetings will take place throughout the planning process, along with general public engagement events. All members are expected to attend and fully participate in each CAG meeting, which is critical to avoid project delay. Meeting times, locations and format will be discussed with CAG members at the initial meeting. At least 50% of the meetings are expected to be held in-person, to encourage full engagement and collaboration.

Tarboro Road Park Redevelopment Citizens Advisory Group – Application Responses

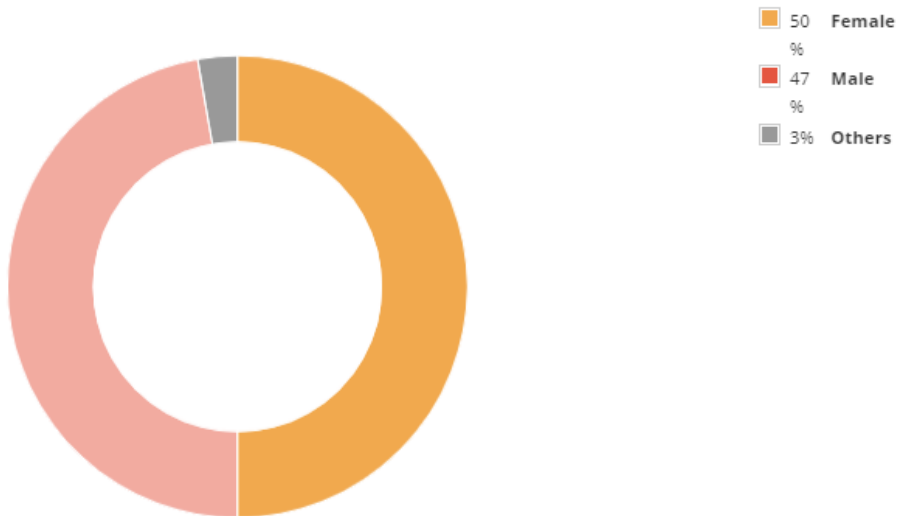
Total Tarboro Road Park CAG Applicant Pool on Aug. 31, 2023 : 30 applicants

APPLICANT DEMOGRAPHICS

What age group describes you?

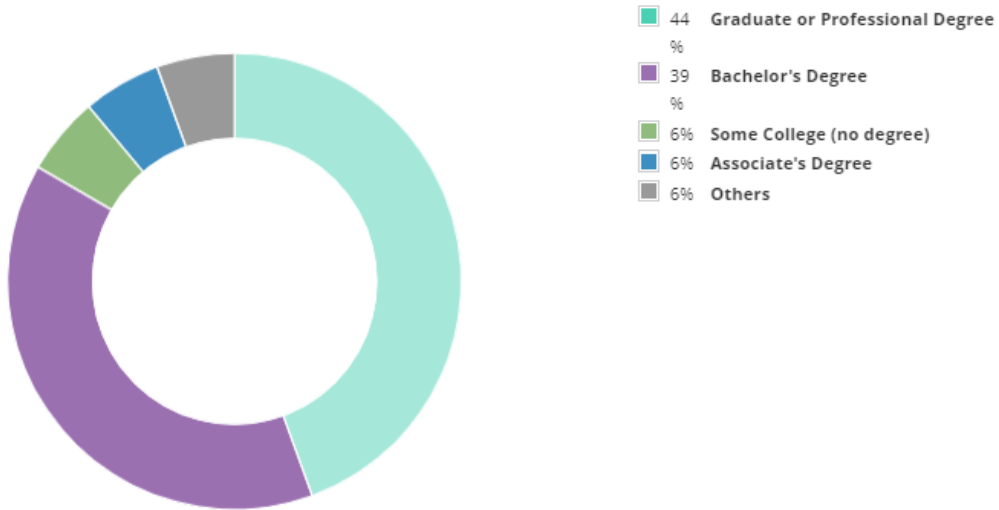


Which of the following best describes your gender?

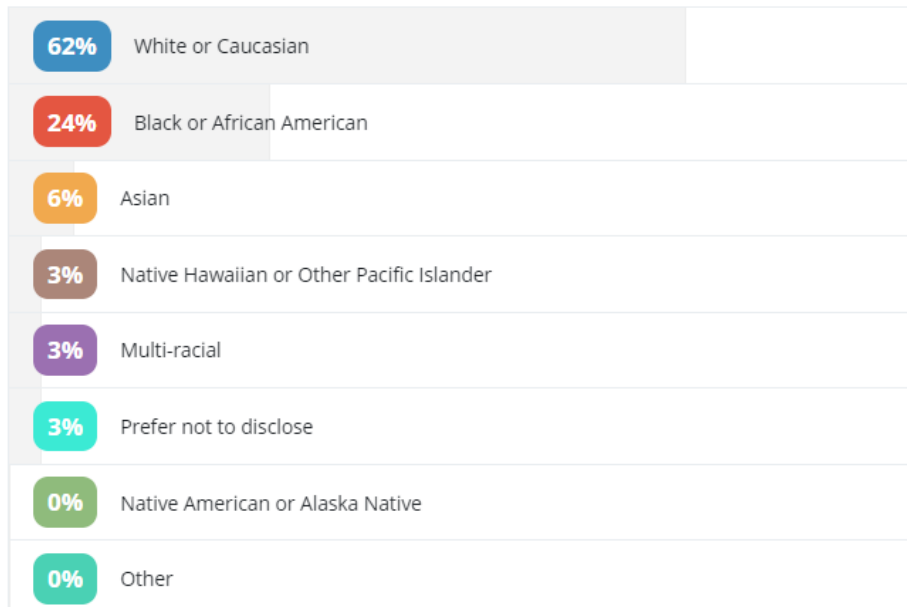


Tarboro Road Park Redevelopment Citizens Advisory Group – Application Responses

Which of the following is the highest level of education you have completed?

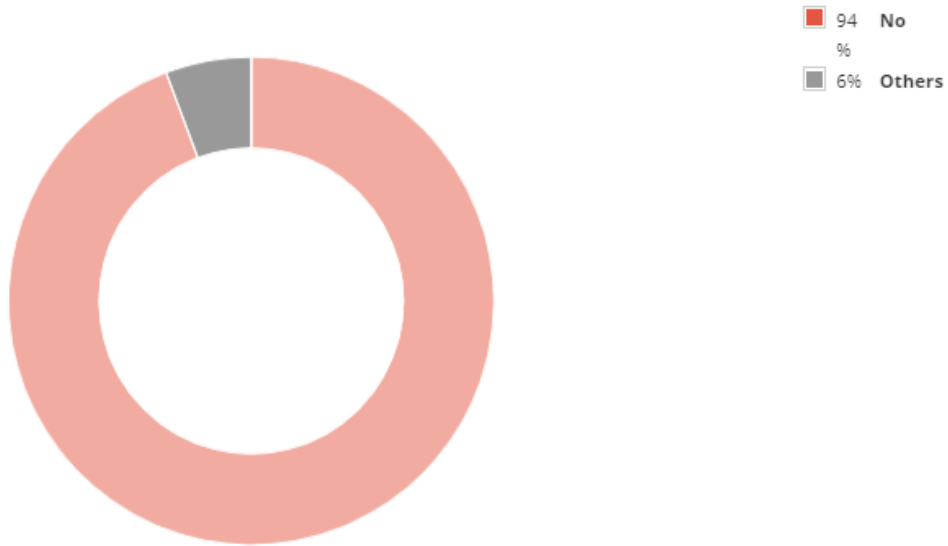


Which of the following best describes your race?



Tarboro Road Park Redevelopment Citizens Advisory Group – Application Responses

Are you of Hispanic, Spanish, or Latino/a/e ethnicity?



Tarboro Road Park Redevelopment Citizens Advisory Group Applications

Applicant 1

(personal information has been redacted)

Why do you want to serve on the CAG?

I live near the Tarboro Center and have used it for 30 years. I understand the needs of the neighborhood. I would like to help make the center continue to serve the community.

Do you represent an organization, neighborhood, or civic group?

Capital Heights neighborhood.

If you represent an organization or civic group, what is the role of your organization or the group in the local community?

No response

If you represent a neighborhood, how would you describe the residents in your neighborhood? To what extent do you see that changing in the future?

No response

Do you have special knowledge or experience in park planning or recreation programming or special skills, interests, or background that you feel would help the CAG? If so, please describe.

No response

Please share any other comments or ideas you have about the CAG and/or general community engagement for this project.

No response

Are you a City of Raleigh resident?

Yes

How long have you lived at your current address?

10+ years

What age group describes you?

Over 55

Which of the following best describes your gender?

Female

Which of the following is the highest level of education you have completed?

Bachelor's Degree

Which of the following best describes your race?

White or Caucasian

Are you of Hispanic, Spanish, or Latino/a/e ethnicity?

No

What is the primary language you speak?

English

Applicant 2

(personal information has been redacted)

Why do you want to serve on the CAG?

I am a local landscape designer and interested in bringing my skills and perspective into public service projects. I focus on ecology and wildlife health in my professional practice.

Do you represent an organization, neighborhood, or civic group?

No

If you represent an organization or civic group, what is the role of your organization or the group in the local community?

No response

If you represent a neighborhood, how would you describe the residents in your neighborhood? To what extent do you see that changing in the future?

No response

Do you have special knowledge or experience in park planning or recreation programming or special skills, interests, or background that you feel would help the CAG? If so, please describe.

No response

Please share any other comments or ideas you have about the CAG and/or general community engagement for this project.

From my experience with residential landscape work, most local citizens are unaware of how conventional landscape design and management practices have indirect effects that lower quality of life. This spans across all income brackets, with higher ones being more difficult to convince of alternative practices. I am interested in incorporating elements such as soil health, micro-climate design and other benefits into the community conversation.

Are you a City of Raleigh resident?

Yes

How long have you lived at your current address?

5-9 years

What age group describes you?

24-54

Which of the following best describes your gender?

Male

Which of the following is the highest level of education you have completed?

Graduate or Professional Degree

Which of the following best describes your race?

Prefer not to disclose

Are you of Hispanic, Spanish, or Latino/a/e ethnicity?

No

What is the primary language you speak?

English

Applicant 3

(personal information has been redacted)

Why do you want to serve on the CAG?

As a Raleigh native who benefited from participating in youth programming at Tarboro Road Park, I want to ensure that community members are given engagement opportunities to communicate with leadership about changes that are happening to the park. I believe that it is important that there is a communication mechanism used to ensure the information exchange.

Do you represent an organization, neighborhood, or civic group?

I do not represent an organization, neighborhood, or civic group.

If you represent an organization or civic group, what is the role of your organization or the group in the local community?

No response

If you represent a neighborhood, how would you describe the residents in your neighborhood? To what extent do you see that changing in the future?

Although I live in the Winslow Ridge Community, I do not represent my neighborhood. It is a predominately black/African American townhome community with multiple age groups and income levels.

Do you have special knowledge or experience in park planning or recreation programming or special skills, interests, or background that you feel would help the CAG? If so, please describe.

Yes, I have a master’s degree in public administration, bachelor's degree in Public Health Education and currently serve as the Deputy Director of Communications and Engagement of NC Medicaid at the North Carolina Department of Health and Human Services. I am also an active member of the Knightdale Wake Forest Alumnae Chapter of Delta Sigma Theta Sorority, Inc. where I previously served as the Assistant Financial Secretary.

Please share any other comments or ideas you have about the CAG and/or general community engagement for this project.

Community Needs Assessment to identify gaps in services. Community Town Hall to share upcoming development. Public communication campaign to announce new services. Feedback loop to share questions, comments, concerns with the new development.

Are you a City of Raleigh resident?

Yes

How long have you lived at your current address?

5-9 year

What age group describes you? 24-54

Which of the following best describes your gender? Female

Which of the following is the highest level of education you have completed?

Graduate or Professional Degree

Which of the following best describes your race? Black or African American

Are you of Hispanic, Spanish, or Latino/a/e ethnicity? No

What is the primary language you speak? English

Applicant 4

(personal information has been redacted)

Why do you want to serve on the CAG?

I live in the area...and I love my City!

Do you represent an organization, neighborhood, or civic group?

No

If you represent an organization or civic group, what is the role of your organization or the group in the local community?

No response

If you represent a neighborhood, how would you describe the residents in your neighborhood? To what extent do you see that changing in the future?

No response

Do you have special knowledge or experience in park planning or recreation programming or special skills, interests, or background that you feel would help the CAG? If so, please describe.

Yes, Environmental Architect

Please share any other comments or ideas you have about the CAG and/or general community engagement for this project.

No response

Are you a City of Raleigh resident?

Yes

How long have you lived at your current address?

1-4 years

What age group describes you?

Over 55

Which of the following best describes your gender?

Male

Which of the following is the highest level of education you have completed?

Bachelor's Degree

Which of the following best describes your race?

Black or African American

Are you of Hispanic, Spanish, or Latino/a/e ethnicity?

No

What is the primary language you speak?

English

Applicant 5

(personal information has been redacted)

Why do you want to serve on the CAG?

I am committed to the community and I want to make sure that we emerge on the other side of these major transitions in a way that will benefit everyone. While there may be no slowing development, we can make smart decisions now to build a stronger community well into the future. I don't want anyone to be left behind and I think a lot of my neighbors would trust me to advocate for them and their concerns.

Do you represent an organization, neighborhood, or civic group?

No response

If you represent an organization or civic group, what is the role of your organization or the group in the local community?

No response

If you represent a neighborhood, how would you describe the residents in your neighborhood? To what extent do you see that changing in the future?

On my street, there is a wide range of renters, transients, permanent homeowners, and everything else in between. I see a lot of lower income people being pushed out and I think we can do a better job of supporting them and making sure they have opportunities to be heard and contribute.

Do you have special knowledge or experience in park planning or recreation programming or special skills, interests, or background that you feel would help the CAG? If so, please describe.

I have a background in education and have worked with minority groups and populations with particular needs, including military families.

Please share any other comments or ideas you have about the CAG and/or general community engagement for this project.

I would like to create community spaces outside of the actual community center, such as a used bookstore that would maybe be effective in bringing everyone from the neighborhood into one place. Otherwise, I fear that it will continue to be segregated across several lines.

Are you a City of Raleigh resident?

Yes

How long have you lived at your current address?

1-4 years

What age group describes you?

24-54

Which of the following best describes your gender?

Female

Which of the following is the highest level of education you have completed?

Graduate or Professional Degree

Which of the following best describes your race? White or Caucasian

Are you of Hispanic, Spanish, or Latino/a/e ethnicity? No

What is the primary language you speak? English

Applicant 6

(personal information has been redacted)

Why do you want to serve on the CAG?

yes

Do you represent an organization, neighborhood, or civic group?

no

If you represent an organization or civic group, what is the role of your organization or the group in the local community?

No response

If you represent a neighborhood, how would you describe the residents in your neighborhood? To what extent do you see that changing in the future?

No response

Do you have special knowledge or experience in park planning or recreation programming or special skills, interests, or background that you feel would help the CAG? If so, please describe.

No response

Please share any other comments or ideas you have about the CAG and/or general community engagement for this project.

No response

Are you a City of Raleigh resident?

Yes

How long have you lived at your current address?

1-4 years

What age group describes you?

24-54

Which of the following best describes your gender?

Female

Which of the following is the highest level of education you have completed?

Graduate or Professional Degree

Which of the following best describes your race?

Black or African American

Are you of Hispanic, Spanish, or Latino/a/e ethnicity?

No

What is the primary language you speak?

English

Applicant 7

(personal information has been redacted)

Why do you want to serve on the CAG?

I have participated in local organizations cleaning streams, highways, and wetlands in Raleigh for many years. I live near this park and want to take a larger step towards helping Raleigh develop some of the best parks in the Country.

Do you represent an organization, neighborhood, or civic group?

No response

If you represent an organization or civic group, what is the role of your organization or the group in the local community?

No response

If you represent a neighborhood, how would you describe the residents in your neighborhood? To what extent do you see that changing in the future?

No response

Do you have special knowledge or experience in park planning or recreation programming or special skills, interests, or background that you feel would help the CAG? If so, please describe.

I've run several volunteer groups in the past. Now I am a full time employee in the IT industry with entrepreneurial experience in the past.

Please share any other comments or ideas you have about the CAG and/or general community engagement for this project.

No response

Are you a City of Raleigh resident?

Yes

How long have you lived at your current address?

Less than a year

What age group describes you?

24-54

Which of the following best describes your gender?

Male

Which of the following is the highest level of education you have completed?

Associate's Degree

Which of the following best describes your race?

White or Caucasian

Are you of Hispanic, Spanish, or Latino/a/e ethnicity?

No

What is the primary language you speak?

English

Applicant 8

(personal information has been redacted)

Why do you want to serve on the CAG?

As an educator I am passionate about nurturing spaces for people to share, learn, and grow. Being a part of this allows me to be an influence in my community!

Do you represent an organization, neighborhood, or civic group?

College Park

If you represent an organization or civic group, what is the role of your organization or the group in the local community?

No response

If you represent a neighborhood, how would you describe the residents in your neighborhood? To what extent do you see that changing in the future?

No response

Do you have special knowledge or experience in park planning or recreation programming or special skills, interests, or background that you feel would help the CAG? If so, please describe.

No response

Please share any other comments or ideas you have about the CAG and/or general community engagement for this project.

No response

Are you a City of Raleigh resident?

Yes

How long have you lived at your current address?

5-9 years

What age group describes you?

24-54

Which of the following best describes your gender?

Female

Which of the following is the highest level of education you have completed?

Bachelor's Degree

Which of the following best describes your race?

White or Caucasian

Are you of Hispanic, Spanish, or Latino/a/e ethnicity?

No

What is the primary language you speak?

English

Applicant 9

(personal information has been redacted)

Why do you want to serve on the CAG?

Directly impacts my community and my own property. Would like to make sure representation of such community is there.

Do you represent an organization, neighborhood, or civic group?

Not officially. We are on the border of Idlewild and College Park

If you represent an organization or civic group, what is the role of your organization or the group in the local community?

No response

If you represent a neighborhood, how would you describe the residents in your neighborhood? To what extent do you see that changing in the future?

No response

Do you have special knowledge or experience in park planning or recreation programming or special skills, interests, or background that you feel would help the CAG? If so, please describe.

I recently completed the COR planning academy.

Please share any other comments or ideas you have about the CAG and/or general community engagement for this project.

No response

Are you a City of Raleigh resident?

Yes

How long have you lived at your current address?

1-4 years

What age group describes you?

24-54

Which of the following best describes your gender?

Prefer not to disclose

Which of the following is the highest level of education you have completed?

Graduate or Professional Degree

Which of the following best describes your race?

White or Caucasian

Are you of Hispanic, Spanish, or Latino/a/e ethnicity?

No

What is the primary language you speak?

English

Applicant 10

(personal information has been redacted)

Why do you want to serve on the CAG?

I believe in the engagement of citizens across a wide spectrum of backgrounds, ages, ethnicities, and general diversity in advisory groups of this nature. I have spent a long time in Raleigh and Downtown specifically and I am a strong believer in community development and engagement. I would like to offer what insights I may have and contribute and learn from other group members; working towards a better and equitable Raleigh

Do you represent an organization, neighborhood, or civic group?

I sit on the executive board for the Southeast Raleigh Community Development Corporation (treasurer), the organization was previously known as the St. Augustine's University Community Development Corporation

If you represent an organization or civic group, what is the role of your organization or the group in the local community?

Their goals are to support growth and community engagement and resources throughout the Southeast Raleigh community. We help facilitate affordable housing, tax services, and community engagement throughout the Southeast Raleigh community.

If you represent a neighborhood, how would you describe the residents in your neighborhood? To what extent do you see that changing in the future?

N/A; however, I live in a neighborhood in Southeast Raleigh and have seen a lot of changes over the 6 years I have been a homeowner in my neighborhood. I have seen home prices and property taxes raised and price a lot of residents out of the area. I foresee that happening more but hope that Raleigh can maintain a wide diversity of residents both socio-economically and beyond.

Do you have special knowledge or experience in park planning or recreation programming or special skills, interests, or background that you feel would help the CAG? If so, please describe.

I spent almost a decade as an events manager, both independently and working as events manager then director at Downtown Raleigh Alliance. I have experience putting on community events, stakeholder engagement, and working between citizens, private companies, and government in the city.

Please share any other comments or ideas you have about the CAG and/or general community engagement for this project.

It is my belief the more transparent and outward in communication the city and parks and recreation can be regarding this project, the better. I believe lots of citizens feel their voice is often not heard or prioritized as private developers and those with more bandwidth to lobby for changes to the city. The more outreach and intentional work the city does to improve this, the better.

Are you a City of Raleigh resident?

Yes

How long have you lived at your current address?

5-9 years

What age group describes you?

24-54

Which of the following best describes your gender?

Male

Which of the following is the highest level of education you have completed?

Tarboro Road Park Redevelopment Citizens Advisory Group – Application Responses

Bachelor's Degree

Which of the following best describes your race?

White or Caucasian

Are you of Hispanic, Spanish, or Latino/a/e ethnicity?

No

What is the primary language you speak?

English

Applicant 11

(personal information has been redacted)

Why do you want to serve on the CAG?

Tarboro Road Park is in my neighborhood and I've had the pleasure of hosting several events there. This has allowed me to get to know the staff (Dwight is the best!) and the facilities. A large reason I voted for the 2022 Parks Bond was because of the large investment it planned to TRP and the Saint Monica Teen Center. I'm excited to see this Park reach its full potential for all the families in the area.

I know that TRP is designed to be rezoned as part of the New Bern/Edenton Overlay project - I have a few open questions as to whether this is something that voters, and my community members, want. I want to serve on the CAG to better understanding stakeholder feedback about what they intend Tarboro Road Park to become - a more traditional park with modern amenities and facilities, and/or a mixed-use residential space with apartments.

To get my neighbors more invested in this project, I started a letter writing campaign for the Idlewild and surrounding neighborhoods to get them more involved in the rezoning process. Several of my neighbors recently attended a Town Hall with Representative Corey Branch and Ira Mabel, and subsequently have followed up with me directly about their hopes (and fears) for TRP.

Do you represent an organization, neighborhood, or civic group?

I live in the Idlewild neighborhood and while I don't hold any formal authority, I have been building relationships with my neighbors about both the Rapid Bus Transit, Overlay, and Tarboro Road Park projects

If you represent an organization or civic group, what is the role of your organization or the group in the local community?

No response

If you represent a neighborhood, how would you describe the residents in your neighborhood? To what extent do you see that changing in the future?

My family and I recently relocated to the Idlewild neighborhood (from the Southpark neighborhood in DTR) because of its diverse neighbors. With two young kids, it's easy to make friends with our never ending bike and scooter rides. As I'm on these daily walks, I see that there are new houses being flipped and developed; with largely whiter and more wealthy families moving in. None of my neighbors, who are all Black, seem to mind these new neighbors and genuinely seem happy to see kids outside playing - and there's no better way to do that than to invest in an improved TRP!

My neighbors are wonderful and many of them have lived in their homes for 30+ years. They're like the multigenerational African-American family across the street. A great-grandmother and a grandmother (with her daughter and 3 grandchildren regularly visiting every weekend) who are always on their front porch casually chatting with any passers-by. They love their home - have made slight renovations these past few years - and want nothing more than to keep their street quiet and safe.

Or my neighbor, James, who lives in a CASA quadplex and wants to move out but can't seem to find another rent-controlled apartment on his disability checks. I'd like to see more truly affordable housing downtown for him and others like him.

Do you have special knowledge or experience in park planning or recreation programming or special skills, interests, or background that you feel would help the CAG? If so, please describe.

I've been asked to contribute to Park Design and Development RFPs because of my background in community organizing and building stakeholder coalitions. I've been an educator for 20+ years, a large part of that in Raleigh and surrounding areas, and I've exclusively served low-income families and

Tarboro Road Park Redevelopment Citizens Advisory Group – Application Responses

families of color. I've supported K12 education, workforce development, youth development, and community college organizations throughout my career through grassroots activism.

I currently lead a national nonprofit organization committed to ensuring that BIPOC children identify and participate in high-quality extracurricular learning.

Please share any other comments or ideas you have about the CAG and/or general community engagement for this project.

From what I heard at the Town Hall meetings about the Rapid Bus Transit and Overlay meetings, many Black families feel blindsided and angry about the insufficient community engagement efforts for this monumental change. I think the City of Raleigh has lost some trust here - and here's an opportunity to win some of it back. I know the TRP project is separate, but it does have some overlap to these larger initiatives - since it falls within the purview of the rezoning plan. I think with the right CAG makeup and stakeholder engagement process (I'm happy to share what I used in Knoxville, TN to engage 30,000+ people in a vision for their School District), the COR can try something different that co-creates a vision with proximate stakeholders in a way that not only build a beautiful and renovated Park, but one that everyone sees their input in and want to use.

Are you a City of Raleigh resident?

Yes

How long have you lived at your current address?

1-4 years

What age group describes you?

24-54

Which of the following best describes your gender?

Female

Which of the following is the highest level of education you have completed?

Graduate or Professional Degree

Which of the following best describes your race?

Multi-racial

Are you of Hispanic, Spanish, or Latino/a/e ethnicity?

No

What is the primary language you speak?

English

Applicant 12

(personal information has been redacted)

Why do you want to serve on the CAG?

I was vice chair of North Central CAC and we met at Tarboro Road Center. I know many of the residents of East College Park and surrounding neighborhoods. I have first hand experience as to how valuable Tarboro Road Center is to those neighborhoods. I would be honored to help make the center even better and open up new visions of what it can become.

Do you represent an organization, neighborhood, or civic group?

I am a resident of Oakwood

If you represent an organization or civic group, what is the role of your organization or the group in the local community?

No response

If you represent a neighborhood, how would you describe the residents in your neighborhood? To what extent do you see that changing in the future?

No response

Do you have special knowledge or experience in park planning or recreation programming or special skills, interests, or background that you feel would help the CAG? If so, please describe.

I have always been an active participant in the Oakwood neighborhood and indeed had experience planning public venues in my former state. I love Raleigh and firmly believe that you can't sit by on the sidelines but help in any way to make our city a welcoming place for everyone!

Please share any other comments or ideas you have about the CAG and/or general community engagement for this project.

As I mentioned before I have worked with The Tarboro Road neighborhood and the surrounding neighborhoods. I believe I have some perspective as to what those neighborhoods would like to see at the center.

Are you a City of Raleigh resident?

Yes

How long have you lived at your current address?

10+ years

What age group describes you?

Prefer not to disclose

Which of the following best describes your gender?

Female

Which of the following is the highest level of education you have completed?

Bachelor's Degree

Which of the following best describes your race?

White or Caucasian

Are you of Hispanic, Spanish, or Latino/a/e ethnicity?

No

What is the primary language you speak?

English

Applicant 13

(personal information has been redacted)

Why do you want to serve on the CAG?

The Tarboro Road Park serves as one of my friend group's favorite haunt, where they play Bike Polo on the hard court tops. I have infrequently taking refuge in the community center from my long commute right between NW Raleigh and N. Rogers/Anderson Point Park.

Do you represent an organization, neighborhood, or civic group?

I am the Chair of the Board of Directors with Oaks and Spokes

If you represent an organization or civic group, what is the role of your organization or the group in the local community?

Oaks and Spokes advocate for equitable and accessible active transportation, for bicycles and pedestrians.

If you represent a neighborhood, how would you describe the residents in your neighborhood? To what extent do you see that changing in the future?

No response

Do you have special knowledge or experience in park planning or recreation programming or special skills, interests, or background that you feel would help the CAG? If so, please describe.

No response

Please share any other comments or ideas you have about the CAG and/or general community engagement for this project.

Please consider a more frequent public information sessions, spread out across early afternoon and late afternoon/early evening, to accommodate those who can attend earlier sessions, and accommodate those who have to work a traditional work day until 5-6 PM but are also very interested in the project and very interested in providing feedback that otherwise would go unheard.

Are you a City of Raleigh resident?

Yes

How long have you lived at your current address?

10+ years

What age group describes you?

24-54

Which of the following best describes your gender?

Male

Which of the following is the highest level of education you have completed?

Graduate or Professional Degree

Which of the following best describes your race?

Asian

Are you of Hispanic, Spanish, or Latino/a/e ethnicity?

No

What is the primary language you speak?

English

Applicant 14

(personal information has been redacted)

Why do you want to serve on the CAG?

I would like to help steer this project in the best possible way to serve the community that will be using it.

Do you represent an organization, neighborhood, or civic group?

I live in Capital Heights which is very close to this park.

If you represent an organization or civic group, what is the role of your organization or the group in the local community?

No response

If you represent a neighborhood, how would you describe the residents in your neighborhood? To what extent do you see that changing in the future?

Our neighborhood has changed quite a bit over the last 10 years, but remains fairly diverse in age, race, and economically.

Do you have special knowledge or experience in park planning or recreation programming or special skills, interests, or background that you feel would help the CAG? If so, please describe.

I work in commercial construction and commercial development. Also have run youth sports programs for the YMCA.

Please share any other comments or ideas you have about the CAG and/or general community engagement for this project.

No response

Are you a City of Raleigh resident?

Yes

How long have you lived at your current address?

10+ years

What age group describes you?

24-54

Which of the following best describes your gender?

Male

Which of the following is the highest level of education you have completed?

Bachelor's Degree

Which of the following best describes your race?

White or Caucasian

Are you of Hispanic, Spanish, or Latino/a/e ethnicity?

No

What is the primary language you speak?

English

Applicant 15

(personal information has been redacted)

Why do you want to serve on the CAG?

I am from Raleigh and enjoy living downtown and watching it grow. I am within walking distance to Tarboro Road but often visit Chavis or Roberts due to their superior amenities. I look forward to learning more about the project and options for Tarboro Road.

Do you represent an organization, neighborhood, or civic group?

No. I do volunteer on the city's Bicycle and Pedestrian Advisory Committee, though.

If you represent an organization or civic group, what is the role of your organization or the group in the local community?

No response

If you represent a neighborhood, how would you describe the residents in your neighborhood? To what extent do you see that changing in the future?

No response

Do you have special knowledge or experience in park planning or recreation programming or special skills, interests, or background that you feel would help the CAG? If so, please describe.

Yes, volunteering with BPAC has been very informative and gives me an understanding of other city-wide projects and planning efforts. I am also an architect by trade and have an understanding of design, planning, and construction projects in general.

Please share any other comments or ideas you have about the CAG and/or general community engagement for this project.

No response

Are you a City of Raleigh resident?

Yes

How long have you lived at your current address?

5-9 years

What age group describes you?

24-54

Which of the following best describes your gender?

Female

Which of the following is the highest level of education you have completed?

Graduate or Professional Degree

Which of the following best describes your race?

White or Caucasian

Are you of Hispanic, Spanish, or Latino/a/e ethnicity?

Yes

What is the primary language you speak?

English

Applicant 16

(personal information has been redacted)

Why do you want to serve on the CAG?

I've been on S State street since 2017 and prior to that on New Bern avenue. Participating in healthy neighborhood growth is very important to me

Do you represent an organization, neighborhood, or civic group?

No

If you represent an organization or civic group, what is the role of your organization or the group in the local community?

No response

If you represent a neighborhood, how would you describe the residents in your neighborhood? To what extent do you see that changing in the future?

Most of the residents in my neighbor are older black single women but gentrifying quickly.

Do you have special knowledge or experience in park planning or recreation programming or special skills, interests, or background that you feel would help the CAG? If so, please describe.

No

Please share any other comments or ideas you have about the CAG and/or general community engagement for this project.

No response

Are you a City of Raleigh resident?

Yes

How long have you lived at your current address?

5-9 years

What age group describes you?

24-54

Which of the following best describes your gender?

Female

Which of the following is the highest level of education you have completed?

Associate's degree

Which of the following best describes your race?

Black or African American

Are you of Hispanic, Spanish, or Latino/a/e ethnicity?

No

What is the primary language you speak?

English

Applicant 17

(personal information has been redacted)

Why do you want to serve on the CAG?

As a resident of downtown, I am passionate about the transformation and improvement of our neighborhoods. I see the Tarboro road park as a wonderful opportunity to energize the often forgotten east edge of downtown.

Do you represent an organization, neighborhood, or civic group?

No

If you represent an organization or civic group, what is the role of your organization or the group in the local community?

No response

If you represent a neighborhood, how would you describe the residents in your neighborhood? To what extent do you see that changing in the future?

No response

Do you have special knowledge or experience in park planning or recreation programming or special skills, interests, or background that you feel would help the CAG? If so, please describe.

As an architect, I have worked on several civic/community/recreation projects across the country, and have spend great deal of time on the other side of the table organizing engagement sessions, as well as designing the projects. I am excited to have the opportunity to be on the community side of the table serving the community.

Please share any other comments or ideas you have about the CAG and/or general community engagement for this project.

No response

Are you a City of Raleigh resident?

Yes

How long have you lived at your current address?

1-4 year

What age group describes you?

24-54

Which of the following best describes your gender?

Male

Which of the following is the highest level of education you have completed?

Graduate or Professional Degree

Which of the following best describes your race?

Asian

Are you of Hispanic, Spanish, or Latino/a/e ethnicity?

No

What is the primary language you speak?

English

Applicant 18

(personal information has been redacted)

Why do you want to serve on the CAG?

I having been serving in the College Park and Idlewild neighborhoods for over 50 years. This will be my second time seeing Tarboro Road Community Center being built. The Center was first built we Community Development Block Grant Dollars. The gym was added on with the City first Park bond

The gym was everything to the children in both neighborhoods. I supported the first bond. It was so exciting to be a part of the first bond. I will never forget.

I lead the remodeling of New Bern Ave Daycare to St. Monica Teen Center along with Mrs. Grant Director of Community Development, and Chief Dolan. and Mrs Youst.

Do you represent an organization, neighborhood, or civic group?

College Park and Idlewild neig and civic groups; College Park and Idlewild neighborhoods. I belong to many organizations and civic groups.

If you represent an organization or civic group, what is the role of your organization or the group in the local community?

I belong to many groups in an outreach capacity and some in a leadership role. I have used the roles for over 50 years to help my neighborhoods and through out Raleigh and Wake County.

If you represent a neighborhood, how would you describe the residents in your neighborhood? To what extent do you see that changing in the future?

I have lived in my neighborhood for 68 years. My neighborhood used to be all Black

They were pushed out., forced out, shut out , and taxed out. They did not have a choice in the redevelopment. Redevelopment of Black Neighborhood is awful because Black's can't live there anymore . The center is very important to bring the old and new together through history.. The new Center can tell that history

Do you have special knowledge or experience in park planning or recreation programming or special skills, interests, or background that you feel would help the CAG? If so, please describe.

I have plenty of experience. I have planned activities at Tarboro Road Community Center since 1978 , I led the rebuilding project at Lane Street Mini Park .

Please share any other comments or ideas you have about the CAG and/or general community engagement for this project.

I think questions are too long

Are you a City of Raleigh resident?

Yes

How long have you lived at your current address?

10+ years

What age group describes you?

Over 55

Which of the following best describes your gender?

Female

Which of the following is the highest level of education you have completed?

Bachelor's Degree

Which of the following best describes your race?

Tarboro Road Park Redevelopment Citizens Advisory Group – Application Responses

Black or African American

Are you of Hispanic, Spanish, or Latino/a/e ethnicity? No response

What is the primary language you speak?

English

Applicant 19

(personal information has been redacted)

Why do you want to serve on the CAG?

I am a local parks and recreation advocate, I live within 2 miles of the park, and I am the Executive Director of Oaks and Spokes, an active transportation, trails, and cycling advocacy organization.

Do you represent an organization, neighborhood, or civic group?

I represent Oaks and Spokes.

If you represent an organization or civic group, what is the role of your organization or the group in the local community?

Executive Director.

If you represent a neighborhood, how would you describe the residents in your neighborhood? To what extent do you see that changing in the future?

No response

Do you have special knowledge or experience in park planning or recreation programming or special skills, interests, or background that you feel would help the CAG? If so, please describe.

I have some experience with recreation programming. I also was one of original advocates for bike polo's use of the tennis courts at Tarrboro.

Please share any other comments or ideas you have about the CAG and/or general community engagement for this project.

It would be wonderful to see a permanent traffic garden installed at Tarrboro. Its location seems ideal for this purpose. There are traffic gardens in parks all over the U.S., and with Bus Rapid Transit so close to Tarrboro Rd, I think it would be great to have a permanent traffic education site there. Bike polo can still be played in this space as well.

Are you a City of Raleigh resident?

Yes

How long have you lived at your current address?

5-9 years

What age group describes you?

24-54

Which of the following best describes your gender?

Male

Which of the following is the highest level of education you have completed?

Bachelor's Degree

Which of the following best describes your race?

White or Caucasian

Are you of Hispanic, Spanish, or Latino/a/e ethnicity?

No

What is the primary language you speak?

English

Applicant 20

(personal information has been redacted)

Why do you want to serve on the CAG?

I have lived about two blocks away from the park for over 15 years. I go past the park nearly every day and have often noticed that it could use some improvements. The location sets it up to be a strong center for the community and could serve as common ground for the diverse neighbors (age, economic status, race). As an architect and interior designer, I am interested in how people use public space around them and would love to contribute my skills to better a neighborhood I love. We are very committed to helping our kids have a great community in which to grow up.

Do you represent an organization, neighborhood, or civic group?

Neighborhood

If you represent an organization or civic group, what is the role of your organization or the group in the local community?

No response

If you represent a neighborhood, how would you describe the residents in your neighborhood? To what extent do you see that changing in the future?

College Park has been quite the mix in my time here. Several of my neighbors grew up here and/or raised their families here. The longevity and commitment to the area is impressive. When I moved here there were some more recent additions like myself who were looking to establish roots in the neighborhood. Even more recently there have been younger people moving in. The neighborhood has changed in many ways with the newer houses but I hope that means another generation of families who plan to stay for many years.

Do you have special knowledge or experience in park planning or recreation programming or special skills, interests, or background that you feel would help the CAG? If so, please describe.

I am an architect and interior designer. I enjoy helping people talk through their ideas and put voice to their needs to see that translate into the physical world around them. As a designer, I am able to find commonalities in ideas and suggest creating compromises.

Please share any other comments or ideas you have about the CAG and/or general community engagement for this project.

I would love to see the diversity of the neighborhood represented. We have a great mix of long time and more recent additions.

Are you a City of Raleigh resident?

Yes

How long have you lived at your current address?

10+ years

What age group describes you?

24-54

Which of the following best describes your gender?

Female

Which of the following is the highest level of education you have completed?

Graduate or Professional Degree

Which of the following best describes your race?

Tarboro Road Park Redevelopment Citizens Advisory Group – Application Responses

White or Caucasian

Are you of Hispanic, Spanish, or Latino/a/e ethnicity?

No

What is the primary language you speak?

English

Applicant 21

(personal information has been redacted)

Why do you want to serve on the CAG?

Live close to the park and have small children

Do you represent an organization, neighborhood, or civic group?

No response

If you represent an organization or civic group, what is the role of your organization or the group in the local community?

No response

If you represent a neighborhood, how would you describe the residents in your neighborhood? To what extent do you see that changing in the future?

No response

Do you have special knowledge or experience in park planning or recreation programming or special skills, interests, or background that you feel would help the CAG? If so, please describe.

No response

Please share any other comments or ideas you have about the CAG and/or general community engagement for this project.

No response

Are you a City of Raleigh resident?

Yes

How long have you lived at your current address?

5-9 years

What age group describes you?

24-54

Which of the following best describes your gender?

Male

Which of the following is the highest level of education you have completed?

Graduate or Professional Degree

Which of the following best describes your race?

White or Caucasian

Are you of Hispanic, Spanish, or Latino/a/e ethnicity?

No

What is the primary language you speak?

English

Applicant 22

(personal information has been redacted)

Why do you want to serve on the CAG?

I love this neighborhood and watching it grow. I would love to be able to add positive things to the neighborhood and be apart of the process.

Do you represent an organization, neighborhood, or civic group?

My neighborhood in East College Park

If you represent an organization or civic group, what is the role of your organization or the group in the local community?

No response

If you represent a neighborhood, how would you describe the residents in your neighborhood? To what extent do you see that changing in the future?

No response

Do you have special knowledge or experience in park planning or recreation programming or special skills, interests, or background that you feel would help the CAG? If so, please describe.

No response

Please share any other comments or ideas you have about the CAG and/or general community engagement for this project.

No response

Are you a City of Raleigh resident?

Yes

How long have you lived at your current address?

1-4 years

What age group describes you?

24-54

Which of the following best describes your gender?

Female

Which of the following is the highest level of education you have completed?

Bachelor's Degree

Which of the following best describes your race?

White or Caucasia

Are you of Hispanic, Spanish, or Latino/a/e ethnicity?

No

What is the primary language you speak?

English

Applicant 23

(personal information has been redacted)

Why do you want to serve on the CAG?

Prior to COVID-19 I was heavily involved in the community and would like to start here with regaining my stride. I feel that we can do more together and it is time to re-establish a sense of unity. Having a safe space to gather for that is essential. I would love for this to be one of my 1st engagements.

Do you represent an organization, neighborhood, or civic group?

I am an employee of the Office of Rural Health and I am a graduate student at Saint Augustine's University.

If you represent an organization or civic group, what is the role of your organization or the group in the local community?

The Office of Rural Health partners with health centers and other organizations to offer health care assistance to the community through transportation to appointments, low-cost or free medicine and other services. I am one of the Community Development Specialist/Contract Specialists for this team.

If you represent a neighborhood, how would you describe the residents in your neighborhood? To what extent do you see that changing in the future?

No response

Do you have special knowledge or experience in park planning or recreation programming or special skills, interests, or background that you feel would help the CAG? If so, please describe.

I have program and project management experience from my current position and prior experience with the Department of Public Instruction. I have also planned and conducted summer camps for youth that were athletic in nature and also computer science related.

Please share any other comments or ideas you have about the CAG and/or general community engagement for this project.

I appreciate the opportunity to submit this interest survey. If I am not selected, I would still like to receive additional information on how I can spread the word and/or assist in other capacities. I appreciate your time.

Are you a City of Raleigh resident?

Yes

How long have you lived at your current address?

1-4 years

What age group describes you?

24-54

Which of the following best describes your gender?

Female

Which of the following is the highest level of education you have completed?

Bachelor's Degree

Which of the following best describes your race?

Black or African American

Are you of Hispanic, Spanish, or Latino/a/e ethnicity? No

What is the primary language you speak? English

Applicant 24

(personal information has been redacted)

Why do you want to serve on the CAG?

I have lived in the Southeast Raleigh community for 3 years and love this part of our city. I recently began going to the Tarboro Road Park and see it as an existing beautiful place for community to gather and I think it has incredible potential for growth and impact. The opportunity to meet and work with other people who also care about Tarboro Road Park and our community at large is highly intriguing!

Do you represent an organization, neighborhood, or civic group?

I am a member and volunteer at the Southeast Raleigh Table (SERT), a worship community located a half mile away from the Tarboro Road Park.

If you represent an organization or civic group, what is the role of your organization or the group in the local community?

SERT is a "pro-liberation community," committed to dismantling white supremacy and oppressive systems. It is also an LGBTQIA+ affirming community. One of SERT's guiding principles is serving the Southeast Raleigh parish, and Tarboro Road Park is located within this area. SERT partners with and supports Bugg Elementary School, St. Augustine's and Shaw Universities, Fertile Ground Co-Op, and is a member of OneWake. I have held several volunteer roles at SERT, including serving on the Hospitality Team and Leadership Council.

If you represent a neighborhood, how would you describe the residents in your neighborhood? To what extent do you see that changing in the future?

No response

Do you have special knowledge or experience in park planning or recreation programming or special skills, interests, or background that you feel would help the CAG? If so, please describe.

I have been a physical therapist for 16 years and love sports and recreation. I believe sports and exercise activities are an incredible way to gather communities to provide accessible ways for people to experience joy, play, and social engagement. I think Tarboro Road Park already has some great avenues for sports and recreation, with the weight lifting room, dance studio room, indoor gym, and outdoor tennis/pickleball courts.

Although I do not have specific park planning skills, I have organized and run local community health/exercise events at the YMCA, Moms of Preschoolers groups, Barre3, and Crossfit. I also have volunteered at Alliance Medical Ministry Specialty Care/Orthopedic clinic.

Finally, I have entrepreneurial/business experience as I own and run my physical therapy practice.

Please share any other comments or ideas you have about the CAG and/or general community engagement for this project.

Kids/Teens pickleball clinic! Indoor/outdoor dance/zumba classes! Women's or Teens Weightlifting Classes!

Are you a City of Raleigh resident?

Yes

How long have you lived at your current address?

1-4 years

What age group describes you?

24-54

Which of the following best describes your gender?

Tarboro Road Park Redevelopment Citizens Advisory Group – Application Responses

Female

Which of the following is the highest level of education you have completed?

Graduate or Professional Degree

Which of the following best describes your race?

White or Caucasian

Are you of Hispanic, Spanish, or Latino/a/e ethnicity?

No

What is the primary language you speak?

English

Applicant 25

(personal information has been redacted)

Why do you want to serve on the CAG?

Because I love on Tarboro road and have connections with the people directly effected by this project. I also have two small children who enjoy this park.

Do you represent an organization, neighborhood, or civic group?

N

If you represent an organization or civic group, what is the role of your organization or the group in the local community?

No response

If you represent a neighborhood, how would you describe the residents in your neighborhood? To what extent do you see that changing in the future?

No response

Do you have special knowledge or experience in park planning or recreation programming or special skills, interests, or background that you feel would help the CAG? If so, please describe.

I have a close friend who helped build chavis park would be a useful contact.

Please share any other comments or ideas you have about the CAG and/or general community engagement for this project.

No response

Are you a City of Raleigh resident?

Yes

How long have you lived at your current address?

5-9 years

What age group describes you?

24-54

Which of the following best describes your gender?

Female

Which of the following is the highest level of education you have completed?

Graduate or Professional Degree

Which of the following best describes your race?

White or Caucasian

Are you of Hispanic, Spanish, or Latino/a/e ethnicity?

No

What is the primary language you speak?

English

Applicant 26

(personal information has been redacted)

Why do you want to serve on the CAG?

I want to serve on the CAG because I feel really connected to the tarboro road community park, and I want to be sure it continues to benefit the local community. I play bike polo here, and Tarboro road community center has been a big part of my life for the last 7 years. We have a great partnership with the parks community right now, which has allowed our club to grow immensely, and I want to contribute to that.

Do you represent an organization, neighborhood, or civic group?

Raleigh bike polo

If you represent an organization or civic group, what is the role of your organization or the group in the local community?

Raleigh Bike Polo is a pick-up, club sport played on courts. We play twice a week at tarboro road community center, and have anywhere from 6-15 people attend Thursday and Sunday pick up regularly. We provide both casual or competitive playing environments, depending on players wants at any given times. Players from our club have played on teams that have competed in regional and National bike polo events.

If you represent a neighborhood, how would you describe the residents in your neighborhood? To what extent do you see that changing in the future?

No response

Do you have special knowledge or experience in park planning or recreation programming or special skills, interests, or background that you feel would help the CAG? If so, please describe.

I'm very involved in the bike community, so I have experience in planning and engaging in group rides, long rides, trail clean ups, bike commuting, expo events, alley cats (bike scavenger hunts), bike maintenance, and building bikes.

Please share any other comments or ideas you have about the CAG and/or general community engagement for this project.

I think it would be great to ensure that other community clubs have the support and infrastructure they need to be a part of the community, such as exploring multi-use courts. I also think it would be great to have some sort of equipment rental through the community center for people to try tennis and pickle ball without having to invest in gear. We always bring loaner bikes for new bike polo players to try out the sport, so anyone can be involved in Raleigh bike polo.

Are you a City of Raleigh resident?

Yes

How long have you lived at your current address?

1-4 years

What age group describes you?

24-5

Which of the following best describes your gender?

Male

Which of the following is the highest level of education you have completed?

Bachelor's Degree

Which of the following best describes your race?

Tarboro Road Park Redevelopment Citizens Advisory Group – Application Responses

White or Caucasian

Are you of Hispanic, Spanish, or Latino/a/e ethnicity?

No

What is the primary language you speak?

English

Applicant 27

(personal information has been redacted)

Why do you want to serve on the CAG?

I have been a member for Raleigh Bike Polo since it inception in 2013 and been using the community center since RBP was allowed use of the courts in 2014. I have a lot of memories and pride attached to this community park. Although I am now currently residing in Durham I would like to be a part of the group that will help curate it for future persons.

Do you represent an organization, neighborhood, or civic group?

Raleigh Bike Polo

If you represent an organization or civic group, what is the role of your organization or the group in the local community?

Promote healthy activities and community support through cycling advocacy

If you represent a neighborhood, how would you describe the residents in your neighborhood? To what extent do you see that changing in the future?

Multi-racial, low median income. Heavily changing in the near future do to the increase demand for living in proximity to a urban city center.

Do you have special knowledge or experience in park planning or recreation programming or special skills, interests, or background that you feel would help the CAG? If so, please describe.

Strong public speaking skills and holistic approach to problem solving

Please share any other comments or ideas you have about the CAG and/or general community engagement for this project.

As people from many different backgrounds and regions move to this community, I think it’s important, that we create a Park that facilitates all of their needs. Whether it be hockey, Bike Polo, soccer handball, or any other sport, we should be able to facilitate everyone’s desire for athletic expression in the best way possible.

Are you a City of Raleigh resident?

Yes

How long have you lived at your current address?

1-4 years

What age group describes you?

24-54

Which of the following best describes your gender?

Male

Which of the following is the highest level of education you have completed?

Bachelor's Degree

Which of the following best describes your race?

White or Caucasian

Are you of Hispanic, Spanish, or Latino/a/e ethnicity?

No

What is the primary language you speak? English

Applicant 28

(personal information has been redacted)

Why do you want to serve on the CAG?

I have a passion for the development of the Raleigh community and it's best interests for all of its members. I became a civil engineer to provide the best possible design for the end user. I'm a resident of East Raleigh and want to ensure its vision and community are represented equally.

Do you represent an organization, neighborhood, or civic group?

I am a member of the Raleigh Bike Polo community, however if we are only allowed to have one member we elect Meghan Shoop to be our representative, with assistance from the other member's who applied to bring a varied expertise to the advisory group.

If you represent an organization or civic group, what is the role of your organization or the group in the local community?

I am a player who assists with helping maintain the current courts

If you represent a neighborhood, how would you describe the residents in your neighborhood? To what extent do you see that changing in the future?

I live in East Raleigh. I want to maintain the social economic balance it currently has, if not to even encourage more affordable housing and support for our minority and struggling members. I understand that the community has a high margin of income disparity in the past years and is seeing a lot of homes being torn down. I would want Tarboro Community Center to not tailor to those groups, but consider every member equally.

Do you have special knowledge or experience in park planning or recreation programming or special skills, interests, or background that you feel would help the CAG? If so, please describe.

I am a Professional civil engineer who has worked for Kimley-Horn, Timmons Group, and VHB. I was the designer for the Garner Rec Center, in addition to multiple public and private developments focused on community in my eight years of experience. I specialize in accessible design and inclusive design. My interests are aligned with what is best for a community and its well-being.

You should see multiple applications from the Raleigh Bike Polo group. (*redacted*) can be the representative. Since I have only been playing for half a year, if you believe it would be beneficial to have me as an additional member with a more overarching professional opinion I would be willing to participate.

Please share any other comments or ideas you have about the CAG and/or general community engagement for this project.

From my short time with the bike polo group I value their long-lasting relationship with the sport and their agreement with the existing Tarboro Center for more than a decade. They bring life to an abandoned tennis court and bring the overarching community together. The team would benefit from having a permanent hard court, not just for them but for other related spots such as roller hockey, street hockey, roller skaters, and other hardcourt games. Raleigh does not have a single outdoor public roller hockey rink, despite having multiple private indoor ice hockey rinks. Building a new hardcourt will give a place for multiple communities and sports to gather and have events, and I would love for Tarboro to be that magical place. I believe that pickleball and tennis is the wrong use for a lower income / majority POC community and is hastening the gentrification of the neighborhood.

Are you a City of Raleigh resident?

Yes

How long have you lived at your current address?

Tarboro Road Park Redevelopment Citizens Advisory Group – Application Responses

1-4 years

What age group describes you?

24-54

Which of the following best describes your gender?

Male

Which of the following is the highest level of education you have completed?

Bachelor's Degree

Which of the following best describes your race?

White or Caucasian

Are you of Hispanic, Spanish, or Latino/a/e ethnicity?

No

What is the primary language you speak?

English

Applicant 29

(personal information has been redacted)

Why do you want to serve on the CAG?

Hello! My name is (*redacted*), I am both a resident of the neighborhood and a Raleigh Bike Polo Member and Club Representative. Tarboro Community Center is a big reason I personally live in the neighborhood and it has been a wonderful home to Raleigh Bike Polo for over 10 years now. I want to serve my community by joining the CAG to continue the fruitful partnership that Raleigh Bike Polo has both with Tarboro and the City of Raleigh. We are happy and honored to be considered for participation in the process of rebuilding Tarboro Community Center

Do you represent an organization, neighborhood, or civic group?

Raleigh Bike Polo!

If you represent an organization or civic group, what is the role of your organization or the group in the local community?

Raleigh Bike Polo is a sports club that plays at and is continually committed to stewarding Tarboro Road Park. We educate the public about bike polo, host special nights for new players, and routinely clean up the courts and surrounding areas. Throughout the year, we host special events that are open and advertised to the public and lead and participate in bike maintenance workshops among other community-focused and bike-related events. We maintain a courteous relationship with the Community Center to ensure City property is in good repair and make efforts to leave the courts in better shape than we found them each time.

If you represent a neighborhood, how would you describe the residents in your neighborhood? To what extent do you see that changing in the future?

Although I live in the neighborhood and Raleigh Bike Polo has called Tarboro home for ~10 years, there are residents and families that have been here long before. If I am selected to serve on the CAG, I will be committed to working together to bring to life our visions of a Community Center that will serve everyone as fully as possible. This area is changing rapidly- more businesses and residents and heavier traffic has already impacted the neighborhood, and I don't see it slowing anytime soon. The working class people of this neighborhood deserve to be heard and served by their Community Center.

Do you have special knowledge or experience in park planning or recreation programming or special skills, interests, or background that you feel would help the CAG? If so, please describe.

In Austin, TX I helped the Bike Polo club obtain permanent and polo-specific courts at their long-time neighborhood practice space. I have the technical knowledge of what Polo Courts require and am familiar with the City process. I have worked with other sports clubs to figure out dimensions, surfaces, etc that work for us all so that the courts can be suitable for multiple applications as well as fitting for larger Polo tournaments that can bring players from all over the world. Cities that have Polo-specific courts for for tournaments see hundreds of players throughout the year for different events, bringing in revenue and increasing park usage. My experience in planning these events and building courts will be useful in CAG conversations. ; I have served on the board of the North American Hardcourt Bike Polo Association for over 3 years, and have experience acquiring courts that are tournament appropriate (allows Raleigh Bike Polo to host events throughout the year that brings in visitors, revenue and increases park usage) and can also be utilized by other sports clubs. I have worked with the City of Austin, TX and their Polo Club to gather community input and begin the building process- I have technical knowledge regarding what types of dimensions, materials, and designs are suitable as well that will help the CAG collaborate and make informed decisions.

Tarboro Road Park Redevelopment Citizens Advisory Group – Application Responses

(redated) from Raleigh Bike Polo is a Civil Engineer and neighborhood resident who I believe would be a valuable voice and addition to the CAG. He has also submitted a CAG application!

Please share any other comments or ideas you have about the CAG and/or general community engagement for this project.

No response

Are you a City of Raleigh resident?

Yes

How long have you lived at your current address?

1-4 years

What age group describes you?

24-54

Which of the following best describes your gender?

Female

Which of the following is the highest level of education you have completed?

High School Diploma or equivalent (GED)

Which of the following best describes your race?

White or Caucasian

Are you of Hispanic, Spanish, or Latino/a/e ethnicity?

Prefer not to disclose

What is the primary language you speak?

English

Applicant 30

(personal information has been redacted)

Why do you want to serve on the CAG?

I want to do my part to help the community.

Do you represent an organization, neighborhood, or civic group?

I represent the Clarion Crossing neighborhood. The residents are friendly and communal. I do not see that changing in the future.

If you represent an organization or civic group, what is the role of your organization or the group in the local community?

No response

If you represent a neighborhood, how would you describe the residents in your neighborhood? To what extent do you see that changing in the future?

No response

Do you have special knowledge or experience in park planning or recreation programming or special skills, interests, or background that you feel would help the CAG? If so, please describe.

I have a background in Finance from employment with SECU. I also have an MBA.

Please share any other comments or ideas you have about the CAG and/or general community engagement for this project.

Develop nature trails in the local area. Refurbish playgrounds. Establish a community garden.

Are you a City of Raleigh resident?

Ye

How long have you lived at your current address?

1-4 years

What age group describes you?

24-54

Which of the following best describes your gender?

Male

Which of the following is the highest level of education you have completed?

Graduate or Professional Degree

Which of the following best describes your race?

Black or African American

Are you of Hispanic, Spanish, or Latino/a/e ethnicity?

No

What is the primary language you speak?

English

END OF APPLICATIONS

Appendix C: Brief History of Saint Monica Teen Center

The Saint Monica Teen Center is situated in the southeast corner of Tarboro Road Park. The building was originally built in 1930 as part of the Saint Monica Catholic School and later served as home to the New Bern Avenue Day Care. In 2008, It is registered as a Raleigh Historic Landmark.

The building is a one-story structure. According to the St. Monica's School Historic Landmark Designation Report prepared for the Raleigh Historic District Commission, the architecture can be described as a simplified Gothic or "scholastic Gothic" style.

Per the Raleigh Historic Development Commission website (<https://raleighhistoric.org/items/show/88?tour=5&index=9>):

The Catholic Diocese of Raleigh built St. Monica's for African American students in 1930, when all city schools were still segregated. This small building with spare Gothic detailing housed eight elementary grades in four classrooms. The school thrived: Many saw St. Monica's as a better educational option than the public schools for African Americans. In the 1950s, the Diocese integrated its facilities and African American students could attend Sacred Heart Cathedral, the white Catholic elementary school. St. Monica's closed in 1967.

In 1968, it was re-opened as the New Bern Avenue Day Care. In 1972, the City of Raleigh purchased the property from the Catholic Diocese and the day care use continued under a lease agreement.

Saint Monica Teen Center opened its doors to the teens of Raleigh on February 11, 2011. Administered through Raleigh Parks, the Teen Program offers recreation programs and opportunities for teens. The St. Monica Teen Center offers free memberships for teens between the ages of 13 and 19 currently enrolled in middle or high school. The center has a teen lounge, technology room, fitness and dance room, and multipurpose kitchenette.

Appendix D: St. Monica's School Historic Landmark Designation Report

(former) St. Monica's School
Historic Landmark Designation Report
Prepared for the Raleigh Historic Districts Commission

Originally Prepared November 8, 2000
By M. Ruth Little
Longleaf Historic Resources

Revised November 2007
By April Montgomery
Circa, Inc.

Architectural Description

The former St. Monica's School, now the New Bern Avenue Day Care Center, stands at 15 N. Tarboro Street in central Raleigh. The school is located at the corner of a 3.18 acre tract, owned by the city of Raleigh, at the northwest corner of N. Tarboro and Edenton streets. The rectangular building stands at the extreme corner of the tract and faces Edenton Street to the south, although its address is Tarboro Street. Access to the day care center is the rear door, facing a small parking lot. The remainder of the tract contains Tarboro Park, which consists of a recreation center, tennis courts, and picnic and playground facilities.

St. Monica's School, built in 1930, is a one-story brick building of a simplified Gothic style that might be termed "scholastic Gothic." With the exception of window replacements, the building has not been altered since its construction. The flat-roofed rectangular block has a three-bay main (south) facade and six-bay side elevations. Walls are covered in brick veneer laid in a one-to-five common bond variation, and extend above the roof level in a parapet with concrete coping. The stepped parapet over the center bay of each elevation gives emphasis. Front and rear entrances are identical, with a double glazed and paneled door surmounted by a Gothic-arched transom, set into a deep reveal. Each has a concrete cross set into the brickwork above the transom, and flanking shallow brick buttresses with concrete coping. The most striking feature of the building is the central bay of the east elevation, facing Tarboro Street. Not only does the parapet call attention to this bay, but it contains a full-height concrete cross set into the brickwork. At the center of the cross is a seal that presumably represents the Catholic Diocese of Raleigh. Flanking the cross are a pair of lancet-shaped windows with six-over-six sash, and a pair of buttresses. The corresponding bay on the west elevation has the stepped parapet and lancet windows, but lacks a cross and buttresses. The religious symbolism and architectural elaboration of the east bay served a double purpose. It created a visual relationship to Tarboro Street, the only original street that bordered the school, and symbolized the altar of the temporary sanctuary created on Sundays by opening up the two classrooms on this side of the building.

The building rests on a high brick foundation, with concrete steps and iron railings leading to the front and rear entrances. The front and rear entrances are located in annexes that are narrower, with lower roof lines, than the main classroom block. These annexes contain entrance foyers and small flanking office and bathrooms. Wall surfaces flanking the entrances are treated with large blind panels decorated with Flemish bond brickwork. Windows occur only on the east and west side elevations, to illuminate the four classrooms. Each classroom is lit by a band of four tall six-over-six sash windows with transoms. The original wooden sashes were replaced in August 2000 with vinyl

reproduction windows. A small shed-roofed frame storage shed has been attached to the west rear corner of the building.

The interior of St. Monica's School has changed very little from its appearance during the Catholic school era. A wide hallway extends on a north-south axis through the center, with two large classrooms opening to each side. The front section of the hallway, set apart from the main hallway by a Gothic arch, functions as the foyer. On the west side is a small office, with a short, high side window; on the east side a bathroom with a tall six-over-six sash window. At the rear, the arrangement is the same, with a bathroom to the east and a room to the west. The interior is simply finished with linoleum flooring, plaster walls, and tall plaster ceilings. Original glazed and paneled doors with tall transoms open into the classrooms; smaller flat-paneled doors open into the bathrooms and office. Along the west wall of the hallway is a wooden coat rail that is probably original. Only a few minor alterations were necessary to convert the school into a day care center. In place of the original folding partitions between the two east classrooms, a solid partition wall was installed. The small west rear room was converted to a kitchen, and a small pantry was created out of space in the adjacent classroom.

The original school playground was located along the west side of the building, and has disappeared. The playground for the day care center, located on the same site, is enclosed by a chain link fence.

Historic Significance

St. Monica's School in Raleigh, which educated African American children from 1930 to 1967, was located at 15 N. Tarboro Street in east Raleigh. The school building, occupied since that time by the New Bern Avenue Day Care Center, is a well-preserved landmark of one of the most significant schools for African Americans in Raleigh during the segregation era. St. Monica's was the sixth church and school for African Americans established by the Catholic Diocese of Raleigh, which covered fifty-four counties from Burlington to the coast. Among these were the Mother of Mercy School, Washington (1927) and St. Joseph High School in New Bern.¹ St. Monica's was the only Catholic school for African Americans established in Raleigh. The old school building stands as a reminder of the role played by mission schools in African American education during the Jim Crow era before integration. St. Monica's School is significant in the area of ethnic education, and has architectural significance as a well-preserved example of religious school buildings in Raleigh.

¹ Hannigan press release; school catalogue "Catholic Education in North Carolina," 1958.

The history of St. Monica's School extends back to John O'Rorke, a wealthy Irish merchant who arrived in Raleigh about 1820, and became one of the county's earliest Roman Catholic residents. In the 1840s he built a homeplace east of town, at the intersection of New Bern Avenue and Tarboro Street, which played a prominent role in Catholic affairs for over a century. During his lifetime O'Rorke established a Catholic cemetery on an acre of land located a few blocks to the northeast of his homeplace, on the east side of Tarboro Street. Gravestones dating from the late nineteenth and early twentieth centuries stand in the cemetery. The homeplace passed to his descendants, the Ferralls. In February 1930 the Reverend William J. Hafey, Catholic Bishop of Raleigh, North Carolina, purchased for \$100 about four acres bounded by New Bern Avenue, Tarboro Road, and E. Jones Street, with a nineteenth century two-story white frame house at the front corner². These four acres would eventually be the site of a church, auditorium, rectory, convent and a parish hall in addition to the school. The dates of construction and demolition for some of these buildings are unknown. Sanborn maps indicate that the site was developed shortly after the school's construction in 1930 and the moving of the school in 1967 was likely followed by a series of demolitions. The former school and the convent are the only two buildings that remain. The convent, which was the house that stood on the property when Reverend Hafey purchased it in 1930 has been moved outside the city limits and restored as a single family house.

In April 1930 Bishop Hafey, who resided in Raleigh, explained in a letter to Mother Mary William of Maywood College in Scranton, Pennsylvania, his intentions to construct a school on the property and to use the old house as a convent for the Sisters who would teach at the school. He beseeched her to send Sisters from her order as teachers:

Raleigh, being the Cathedral city and the Capitol of the State, I am convinced that an evidence of the Church's interest in the Colored should be given without delay.... [The property] comprises about four acres on three streets and in the center of three Colored sections. The house would serve admirably as a Convent. It has recently been remodeled. Years ago Mass was said in this house when Raleigh was but a mission. The early Bishops made it their stopping place. The spot seems destined for a great purpose³.

² Murray, *Wake: Capital County of North Carolina*, 385n, 181; Survey plat of John O'Rorke Homeplace, 1922, in Diocese of Raleigh Archives, 715 Nazareth Street, Raleigh; Wake County Deed Book 589, 505.

³ Letter from Bishop Hafey to Mother William, April 21, 1930.

Bishop Hafey consulted with Father Michael McInerney, at Belmont Abbey near Charlotte, about the plan for the new school in Raleigh, telling him that:

I have decided to more or less duplicate the Greensboro school at Raleigh. Four (4) large class rooms, of equal size, with folding doors separating each pair, would probably be an economical building. We might also make provision for a teacher's office and a smaller recitation room.⁴

Apparently Father Michael drew up the plan, which did indeed resemble Our Lady of the Miraculous Medal School, the Catholic elementary school in Greensboro that was the model for the Raleigh school. The Greensboro school, built in 1928 by Bishop Hafey, was of modest scholastic Catholic style, with parapeted gables, a brick cross over the entrance, and bands of large sash windows.

Bishop Hafey contracted in June 1930 with Southeastern Construction Company, of Charlotte, to build a one-story brick mission school for \$19,084. The new school was completed in time for classes to begin in September 1930. Three sisters of the Catholic Order of Sisters of the Immaculate Heart of Mary, from Marywood College, Scranton, Pennsylvania, moved into the house on that property and commenced teaching in September. By October 7 five sisters were teaching the 155 pupils enrolled in St. Monica's School. St. Monica's offered grades one through eight. Each of the four classrooms must have held a combined class of two grade levels. All children wore blue skirts or pants, white blouses and sailor ties.

The first priest in charge, Father Charles J. Hannigan, described the new school in this way:

The Church-School building is of tapestry brick with sandstone finish. It is thoroughly modern even to its built-in radio equipment. St. Monica's buildings are in the midst of as beautiful a site as all Raleigh contains. The lot is two hundred by seven hundred feet, two whole city blocks, right in the midst of the finest homes of the best of Raleigh's Colored people, and within sight of its large hospital and college. The school rooms are standard size, and with quite the best equipment⁵.

Father Hannigan held Sunday mass in the two classrooms in the east rear of the school, which could be converted into one room by opening the accordion doors that separated them. He apparently remained at St. Monica's School only a few years, long

⁴ Letter from Bishop Hafey to Father Michael, April 26, 1930.

⁵ News release written by Father Hannigan, October 7, 1930, copy in Diocese of Raleigh Archives.

enough to make certain that the school was off to a good start. The old priest had been in charge of St. Joseph High School in New Bern prior to his service at St. Monica's. He found the Raleigh mission school to be a special place:

The interest manifested by the non-Catholic Colored people of Raleigh in this the latest expression of Bishop Hafey's interest in their spiritual welfare was quite the most extraordinary thing this old missionary among the Colored people has ever seen. ...Never in the long service of this old missionary has he seen anything like the interest the Colored people of Raleigh is showing in the work at St. Monica's⁶.

The school flourished among the African American community in East Raleigh, a large area bounded by St. Augustine's College, an Episcopalian mission school to the north, and Shaw College, a Baptist mission school to the south. By 1958 182 pupils were enrolled. The Reverend W. James Tierney directed the school from 1940 to 1965, the longest tenure of any director. The state catalogue of Catholic schools noted in that year that:

The school is especially noted for its beautiful melodies which spring the heart of each child. In addition, the studies of French and German have been introduced and special art classes are conducted for talented pupils. Thus, the students are well-grounded in a culture that will influence their future lives⁷.

African-American parents viewed St. Monica's as one of the surest means to insure a better future for their children. The success of those students upon reaching adulthood, when they assumed leadership positions in the community, is proof of the value of the education they received. Many of Raleigh's most prominent African Americans today speak respectfully of the discipline, structure, sound instruction, and love that they experienced in St. Monica's classrooms. When Howard B. Pullen was in the fourth grade, his parents pulled him out of Lucille Hunter Public School and sent him to St. Monica's, where he stayed through the seventh grade. He received such a good education that he wanted to continue in a Catholic high school, but there was not one in Raleigh, so he attended a public high school. Beatrice Hamlin and all seven of her brothers and sisters attended St. Monica's, where her father was the first janitor⁸.

Eventually the church moved from the school into an adjacent building, a quonset hut that was constructed northwest of the school for this purpose. This burned in the 1970s.

⁶ News release written by Father Hannigan October 7, 1930, copy in Diocese of Raleigh Archives.

⁷ "Catholic Education in North Carolina," 84.

⁸ Simmons-Henry and Edmisten, *Culture Town*, 149, 140.

A third structure, a boy's club, was also erected on the campus during the existence of the school. This narrow building stood a short distance west of the school. It had been demolished by 1968⁹.

St. Monica's School gave African American children a sound education for over thirty-five years, from 1930 to its closing in 1967. When the Catholic diocese integrated its white and black facilities, St. Monica's was merged into Sacred Heart School, the white Catholic school in Raleigh, now also known as Cathedral School. Thus there was no longer any need for a separate African-American Catholic school¹⁰.

In 1968, Jorean Debnam and Mary Sharp rented the vacant school from the Catholic diocese and opened the New Bern Avenue Day Care, a non-profit institution. The old school building proved to be a wonderful structure for this adaptive use, and the day care center has flourished up to the present.

About 1972 the city purchased the property from the Catholics and continues to own it. At approximately the same time, the city extended Edenton Street, which had ended at the Catholic property, through to the east. This cut the convent off from the school, and completely altered the school's setting by eliminating its front yard.

Since the city acquired the school property, it has leased the old school building to the day care center. In 1981, in order to save the old Home-Convent from demolition, Mr. and Mrs. Sherrill Register moved it to a new site on Brassfield Road in north Raleigh, and restored it as their residence¹¹.

Historic Context: African American Education in Raleigh

During the nineteenth and twentieth centuries, Raleigh's African American community had a strong educational ethic. This was a legacy of the slavery era when education of slaves was illegal, and of the post-Civil War period when education became the means by which blacks could better themselves and their race. During the Civil War, as northern religious denominations and government agencies such as the Freedmen's Bureau were able to move into areas of the Confederacy occupied by Union troops, Negro schools were set up to bring the former slaves into a state of literacy. Most of these schools were insubstantial frame buildings that vanished long ago, but a few of them grew into substantial institutions that still survive. Both of Raleigh's black

⁹ Sketch map of Catholic school property, City of Raleigh, no date. Copy in Designation Report File.

¹⁰ Raleigh City Directories: the school, at 11 N. Tarboro St., is listed in the 1966-67 directory, but in 1968 the address is listed as "vacant."; Father Thomas Hadden, Wilmington, telephone interview by the author, November 7, 2000.

¹¹ Sherrill Register, interview by Ruth Little, October 30, 2000.

colleges, Saint Augustine's and Shaw, were established by northern missionary groups during the immediate post-war period.

Both public and private elementary schools were established during the late nineteenth and early twentieth centuries. Those provided by the city school system generally had inferior facilities to those of white elementary schools. One of the finest public elementary schools for blacks in Raleigh was Washington Elementary School, at the corner of South and McDowell streets, built about 1900. This was a two-story frame building of stylish Victorian design. Lucille Hunter Elementary School was built at 1018 E. Davie Street in the 1920s during the consolidation era, when small frame schools were consolidated into large, modern brick school buildings. Crosby-Garfield Elementary School on E. Lenoir Street was a frame school that burned, and was replaced with a modern brick school in 1939. The freedmen's community of Method, in west Raleigh, had an elementary and high school called the Berry School, founded about 1900.

In 1930 the establishment of St. Monica's School in east Raleigh by the Catholic diocese fulfilled a strong educational need. Although it is likely that few students at St. Monica's School actually converted to Catholicism as a result of their educational experiences, most of them grew into the solid, upstanding citizens of whom the Sisters of the Immaculate Heart of Mary were proud. St. Monica's School is probably the last example in a long tradition of white religious and philanthropic groups providing mission schools for the education of African Americans in Raleigh.

Bibliography

"Catholic Education in North Carolina," 1958. Catalogue in possession of the Catholic Diocese Archives, Raleigh.

Interviews by the author:

Debnam, Joreen, Director, New Bern Avenue Day Care Center, September 11, 2000.

Father Thomas, Wilmington, November 7, 2000.

Register, Sherrill, owner of House-Convent, October 30, 2000.

Murray, Elizabeth Reid. *Wake: Capital County of North Carolina*. Raleigh: Capital County Publishing Company, 1983.

St. Monica's Catholic School archival collection, Archives of the Catholic Diocese, 715 Nazareth Street, Raleigh.

Simmons-Henry, Linda and Linda Edmisten. *Culture Town: Life in Raleigh's African American Communities*. Raleigh Historic Districts Commission Inc., 1993.

Boundary Description and Justification

The attached Wake County Tax Map, Parcel 1713198560, specifies the entire parcel known as "Tarboro Park," containing 3.18 acres. The amount of acreage to be included in this landmark designation is approximately .73 acre that includes St. Monica's School, the parking lot to the rear, and the playground along the west side. The dimensions of this lot, as shown on the tax map, are approximately 169 x 178 x 28 x 150 x 183. The remainder of the Tarboro Park parcel contains a recreation center building, tennis courts, and park landscaping that date from the late twentieth century and do not relate to the period of historic significance of St. Monica's School, which ended in 1967.



South Façade



East facade



North Façade



West and South facade

Appendix E: St. Monica's School Historic Landmark Ordinance

WAKE COUNTY, NC 81
LAURA M RIDDICK
REGISTER OF DEEDS
PRESENTED & RECORDED ON
12/17/2008 AT 10:46:40

BOOK:013324 PAGE:01883 - 01887

ORDINANCE NO. (2008) 485

AN ORDINANCE DESIGNATING (former) SAINT MONICA'S SCHOOL IN THE PLANNING JURISDICTION OF THE CITY OF RALEIGH, NORTH CAROLINA, A HISTORIC LANDMARK

WHEREAS, the General Assembly of the State of North Carolina authorized the creation of the Raleigh Historic Districts Commission for the City of Raleigh and otherwise provided for the preservation of certain historic sites and buildings by the passage of Part 3C, Chapter 160A, Article 19 of the North Carolina General Statutes; and

WHEREAS, the Raleigh Historic Districts Commission has made an investigation and recommended the following property be designated a historic landmark; and

WHEREAS, the North Carolina Department of Cultural Resources has made an analysis and recommendation that the following property be designated a historic landmark; and

WHEREAS, on the 4th day of November, 2008, a joint public hearing was held in the Council Chamber of the Avery C. Upchurch Municipal Complex, Raleigh, before the City Council of the City of Raleigh and the Raleigh Historic Districts Commission to determine whether the hereinafter described property should be designated a historic landmark; and

WHEREAS, all requirements of Part 3C, Chapter 160A, Article 19 of the North Carolina General Statutes, preceding the adoption of this ordinance, have been complied with.

NOW, THEREFORE, BE IT ORDAINED BY THE CITY COUNCIL OF THE CITY OF RALEIGH, NORTH CAROLINA THAT:

Section 1. The property designated as (former) Saint Monica's School, in the planning jurisdiction of the City of Raleigh, North Carolina, be and is declared a Raleigh Historic Landmark. Said property being more particularly described as follows:

The property located at 15 North Tarboro Street, Raleigh, NC, owned by City of Raleigh; that property described in deed book 02686, page 0763 recorded in

Wake County Registry, comprising approximately .73 acres of the parcel and with approximate dimensions of 169 feet x 178 feet x 28 feet x 150 feet x 183 feet.

Section 2. Those elements of the property that are integral to its historical, prehistorical, architectural, archaeological and/or cultural significance or any combination thereof are as follows:

The one-story brick building, the parking lot to the rear, and the playground along the west side and the approximately .73 acre on which it sits. The remainder of the Tarboro Park parcel contains a recreation center building, tennis courts, and park landscaping that date from the late twentieth century and do not relate to the period of historic significance of St. Monica's School, which ended in 1967. St. Monica's School is historically significant in the area of ethnic education, and has architectural significance as a well-preserved example of religious school buildings in Raleigh.

Section 3. No portion of the exterior features of any building, site, structure, or object (including walls, fences, light fixtures, steps, pavement, paths, or any other appurtenant features), trees, nor above ground utility structure located on the hereinbefore described property that is designated in this ordinance may be altered, restored, moved, remodeled, or reconstructed so that a change in design, material or outer appearance occurs unless and until a certificate of appropriateness is obtained from the Raleigh Historic Districts Commission or its successors; provided however that the Raleigh Planning Director or designee may approve certificates of appropriateness for minor works as listed in the Bylaws and Rules of Procedure of the Raleigh Historic Districts Commission.

Section 4. No building, site, structure, or object (including walls, fences, light fixtures, steps, pavement, paths, or any other appurtenant features), trees, nor above ground utility structure located on the hereinbefore described property that is designated in this ordinance may be demolished unless and until either approval of demolition is obtained from the Raleigh Historic Districts Commission or a period of three hundred sixty-five (365) days has elapsed following final review by the Commission of a request for demolition (or any longer period of time required by N.C.G.S. 160A-400.14 as it maybe amended hereafter); provided however, that demolition may be denied by the Raleigh Historic Districts Commission in the event that the State Historic Preservation Officer determines that the building, site, or structure has statewide significance as provided by N.C.G.S. 160A-400.14.

Section 5. The Raleigh Historic Districts Commission shall have no jurisdiction over the interior features of the property.

Section 6. All owners and occupants of the property hereinabove described, whose identity and addresses can be ascertained by the exercise of due diligence shall be sent by certified mail a copy of this ordinance.

Section 7. This ordinance shall be indexed after the property owner's name in the grantor and grantee indexes in the Office of the Register of Deeds of Wake County.

Section 8. City administration and the Raleigh Historic Districts Commission are hereby authorized and directed to have erected an appropriate sign on the site hereinabove described setting forth the fact that said site has been designated a historic landmark by action of the Raleigh Historic Districts Commission and the City Council of the City of Raleigh provided, should the owners of the hereinabove described property not consent to the erection of said sign on the described premises, City administration and the Raleigh Historic Districts Commission are hereby authorized and directed to have said sign located on the public right-of-way adjacent to said property.

Section 9. In the event any building, site, structure, or object designated by this ordinance is demolished in accordance with the ordinances of the City of Raleigh, this ordinance shall automatically be null and void.

Section 10. Any violation of this ordinance shall be unlawful as by law provided.

Adopted: November 18, 2008

Effective: November 18, 2008

Distribution: Department of City Planning
Inspections Department
Raleigh Historic Districts Commission
Wake County Tax Assessor
Property Owner and Occupant (if not the owner)
Registrar of Deeds



City of Raleigh
North Carolina


STATE OF NORTH CAROLINA)
COUNTY OF WAKE)

CERTIFICATION

I, Ralph L. Puccini, Assistant Deputy Clerk of the City of Raleigh, North Carolina,
do hereby certify that the attached is a true and exact copy of City of Raleigh
Ordinance No. (2008) 485 adopted November 18, 2008.

IN WITNESS WHEREOF, I have unto set my hand and have caused the Seal of
the City of Raleigh to be affixed this 3rd day of December, 2008.




Ralph L. Puccini
Assistant Deputy Clerk



BOOK:013324 PAGE:01883 - 01887

**Yellow probate sheet is a vital part of your recorded document.
Please retain with original document and submit for rerecording.**



**Wake County Register of Deeds
Laura M. Riddick
Register of Deeds**

This Customer Group
_____ # of Time Stamps Needed

This Document
_____ 5 New Time Stamp
_____ # of Pages