

**2022-2027**

**BOND**

**PROGRAM**

City of San Antonio



CITY OF SAN ANTONIO  
**PUBLIC WORKS  
DEPARTMENT**

**South Brazos Street**  
**(Alazan Creek to Apache Creek)**

**May 7, 2024**

**Our Lady of Guadalupe Shrine**  
**(Brother Gus Hall Meeting Room)**

1336 San Fernando Street, San Antonio, TX 78207

**Design Public Meeting**

---

Presented by Public Works

# Agenda

---

- Welcome and Introductions
- Project Scope
- Existing Conditions
- Proposed Improvements
- Project Schedule
- Public Comments & Questions

**2022-2027**

**BOND**

**PROGRAM**

City of San Antonio



# South Brazos Street (Alazan Creek to Apache Creek)

## Project Staff & City Consultant



### Council Office

Teri Castillo  
Councilmember  
District 5  
Council Staff



### Public Works

Sean Reich, P.E.  
Project Manager  
Mariano Martino, P.E.  
Project Engineer  
Joey Doctor  
Sr. Management Coordinator



### Design Consultant

Julio Ramos, P.E.  
Project Manager  
WSP





PROPOSED 2022-2027

# BOND PROGRAM

City of San Antonio



## INFORMATION GUIDE



# APPROVED

May 7, 2022



# South Brazos Street (Alazan Creek to Apache Creek)

## Project Scope

- Street improvements including multi-use path, widened sidewalks, curbs, driveway approaches, landscaping, trees, wheelchair ramps, and bus shelter improvements.
- The roadway will receive a mill and overlay (asphalt) and will be reconstructed on the south end of the project.



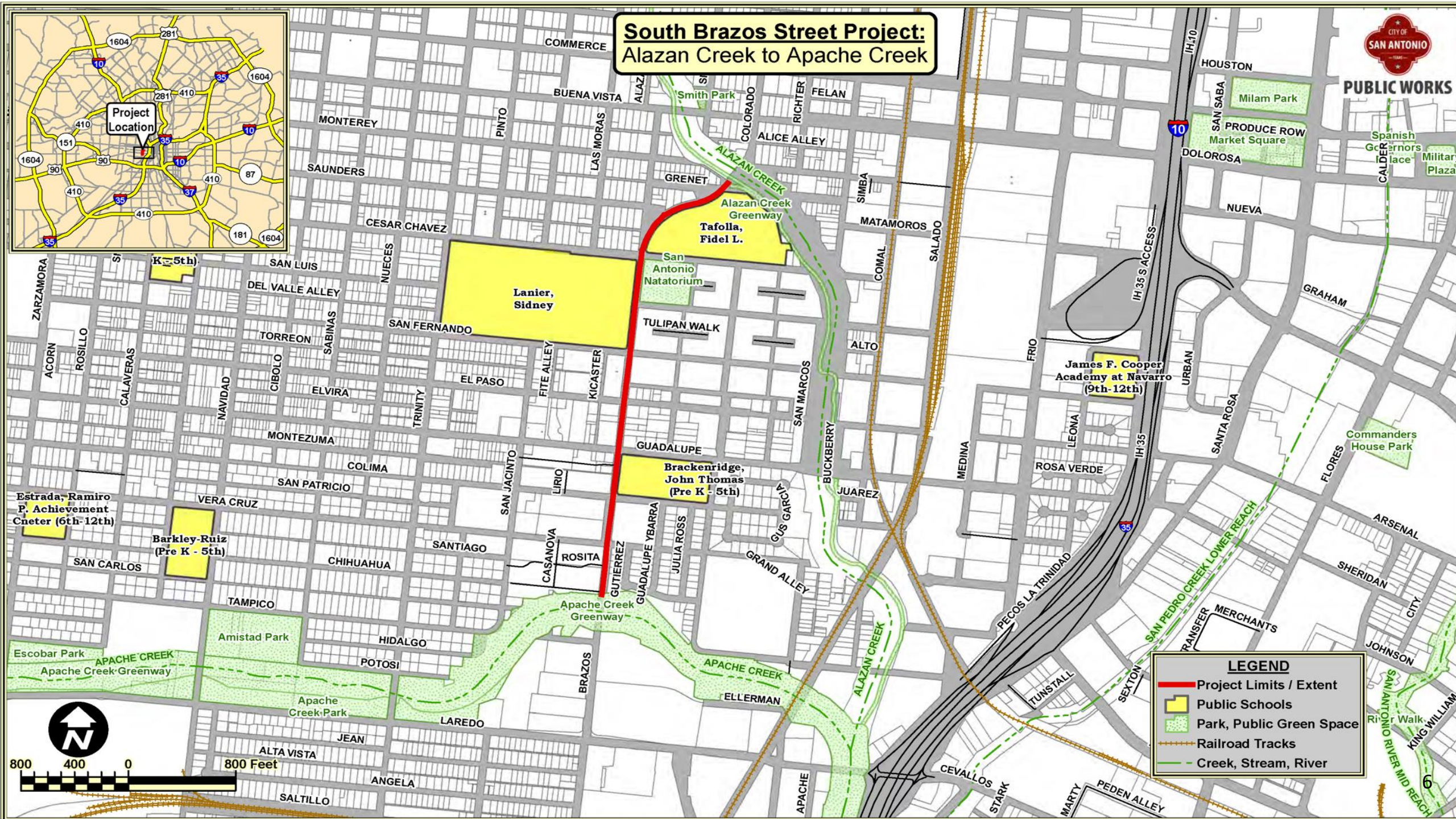
South Brazos north of Apache Creek



# South Brazos Street Project: Alazan Creek to Apache Creek

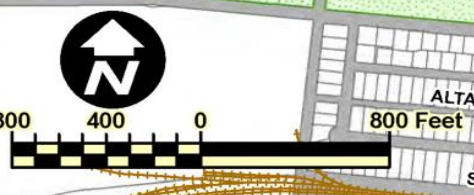


PUBLIC WORKS



**LEGEND**

- Project Limits / Extent
- Public Schools
- Park, Public Green Space
- Railroad Tracks
- Creek, Stream, River



Estrada, Ramiro P. Achievement Center (6th-12th)

Barkley-Ruiz (Pre K - 5th)

Lanier, Sidney

Brackenridge, John Thomas (Pre K - 5th)

James F. Cooper Academy at Navarro (9th-12th)

Tafolla, Fidel L.

San Antonio Natatorium

Milam Park  
PRODUCE ROW Market Square

Spanish Gardens  
Carmen's Place  
Military Plaza

Commanders House Park

Escobar Park  
APACHE CREEK  
Apache Creek Greenway

Amistad Park

Apache Creek Park

Apache Creek Greenway

APACHE CREEK

ALAZAN CREEK

SAN PEDRO CREEK LOWER REACH

SAN ANTONIO RIVER MID REACH



# South Brazos Street (Alazan Creek to Apache Creek)

## Existing Conditions

- Old roadway, deteriorating pavement
- Broken sidewalks and curbs
- Non-compliant wheelchair ramps
- Poor street drainage



South Brazos St. & Vera Cruz St.



# South Brazos Street (Alazan Creek to Apache Creek)

## Existing Conditions



South Brazos St. & El Paso



South Brazos St. & El Paso



# South Brazos Street (Alazan Creek to Apache Creek)

## Existing Conditions



South Brazos St. & Guadalupe St.



South Brazos St. & Guadalupe St.



# South Brazos Street (Alazan Creek to Apache Creek)

## Existing Conditions



South Brazos St. & Colima St.

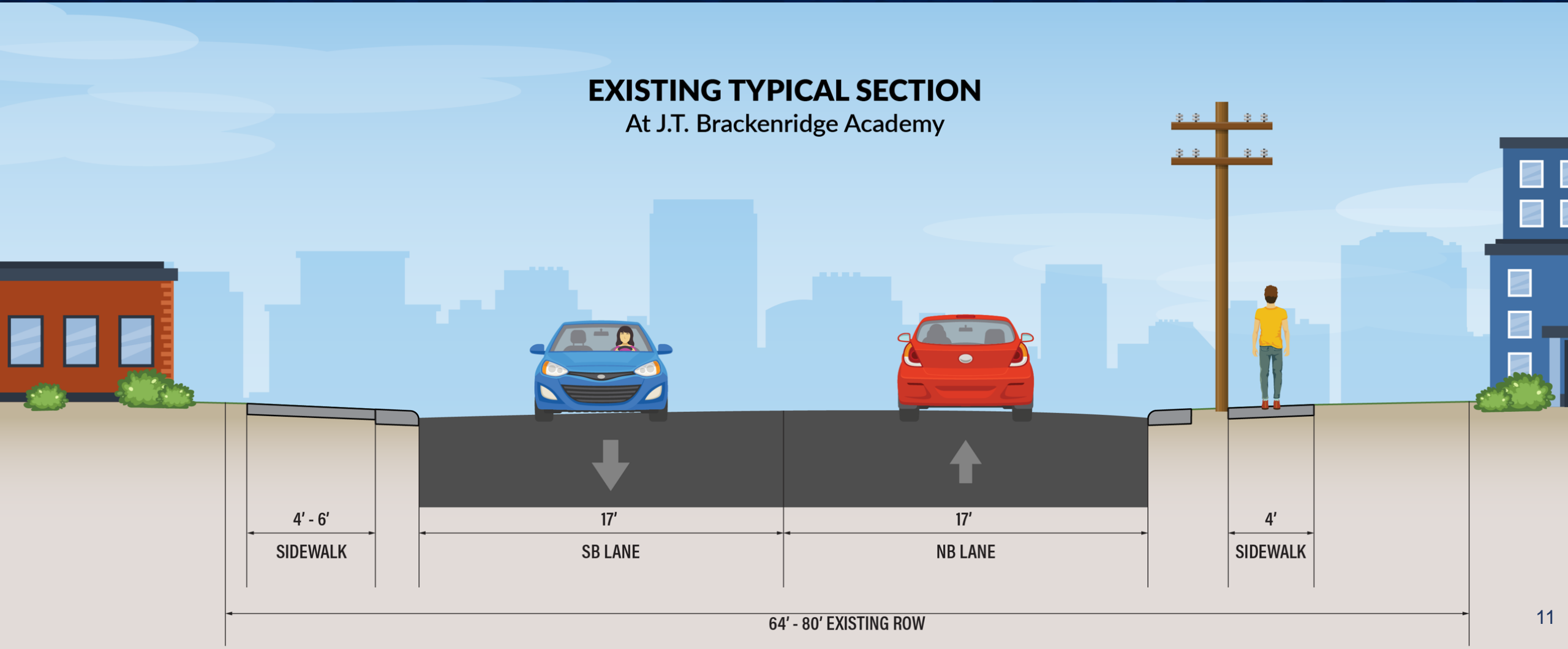
South Brazos St. & Colima St.



# South Brazos Street (Alazan Creek to Apache Creek)

## Existing: Street Section at J.T. Brackenridge Academy

### EXISTING TYPICAL SECTION At J.T. Brackenridge Academy

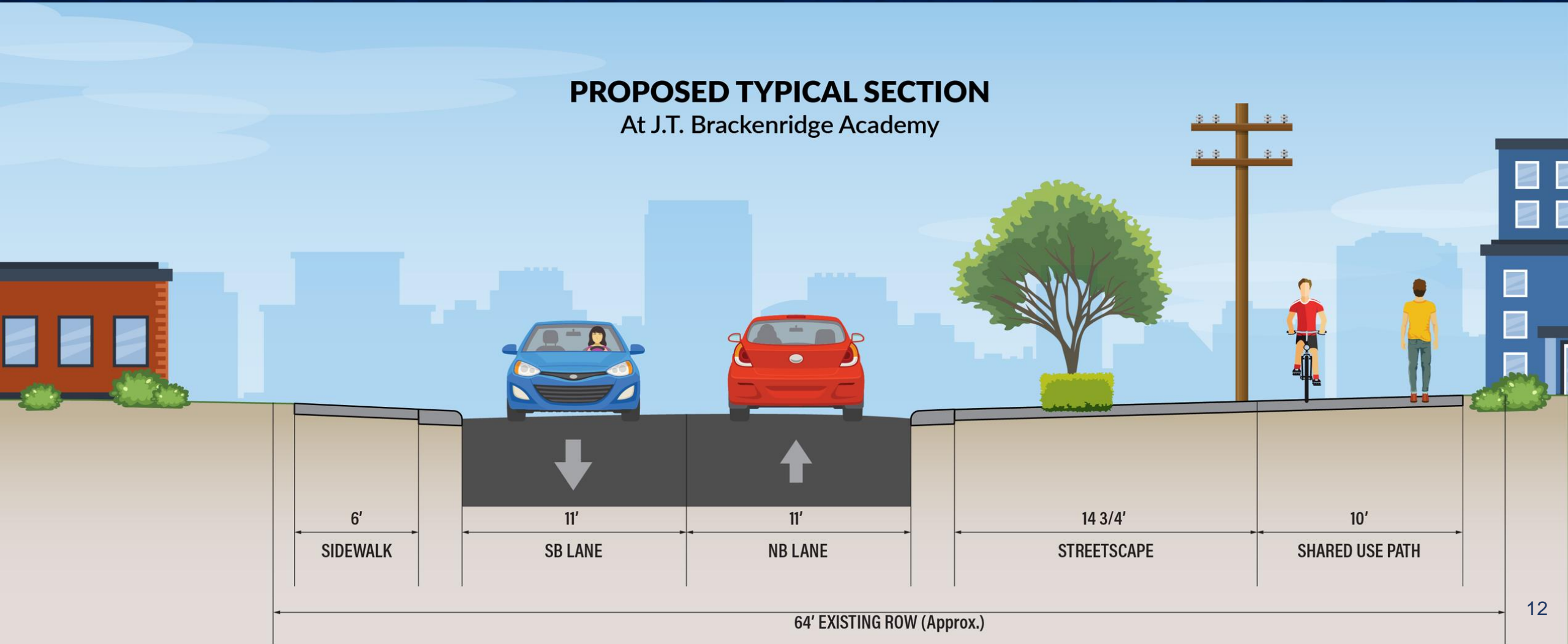




# South Brazos Street (Alazan Creek to Apache Creek)

## Proposed: Typical Street Section at J.T. Brackenridge Academy

### PROPOSED TYPICAL SECTION At J.T. Brackenridge Academy

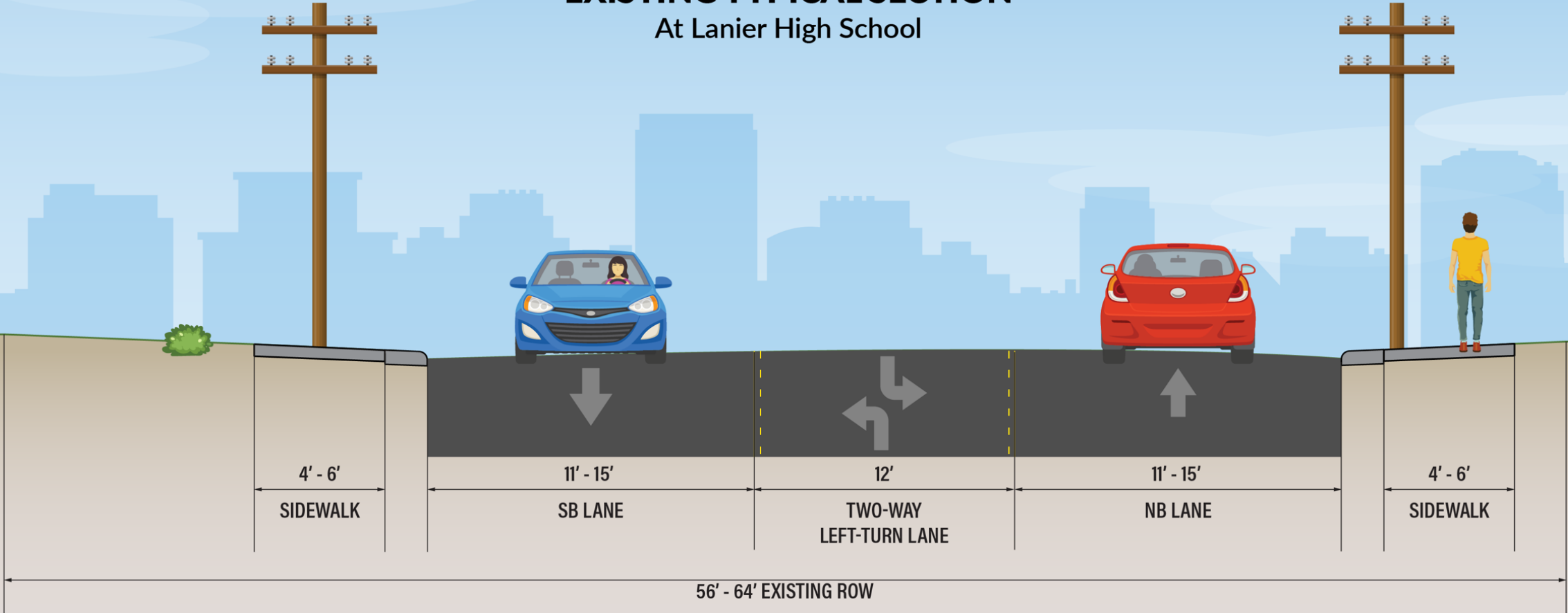




# South Brazos Street (Alazan Creek to Apache Creek)

## Existing: Street Section at Lanier High School

### EXISTING TYPICAL SECTION At Lanier High School

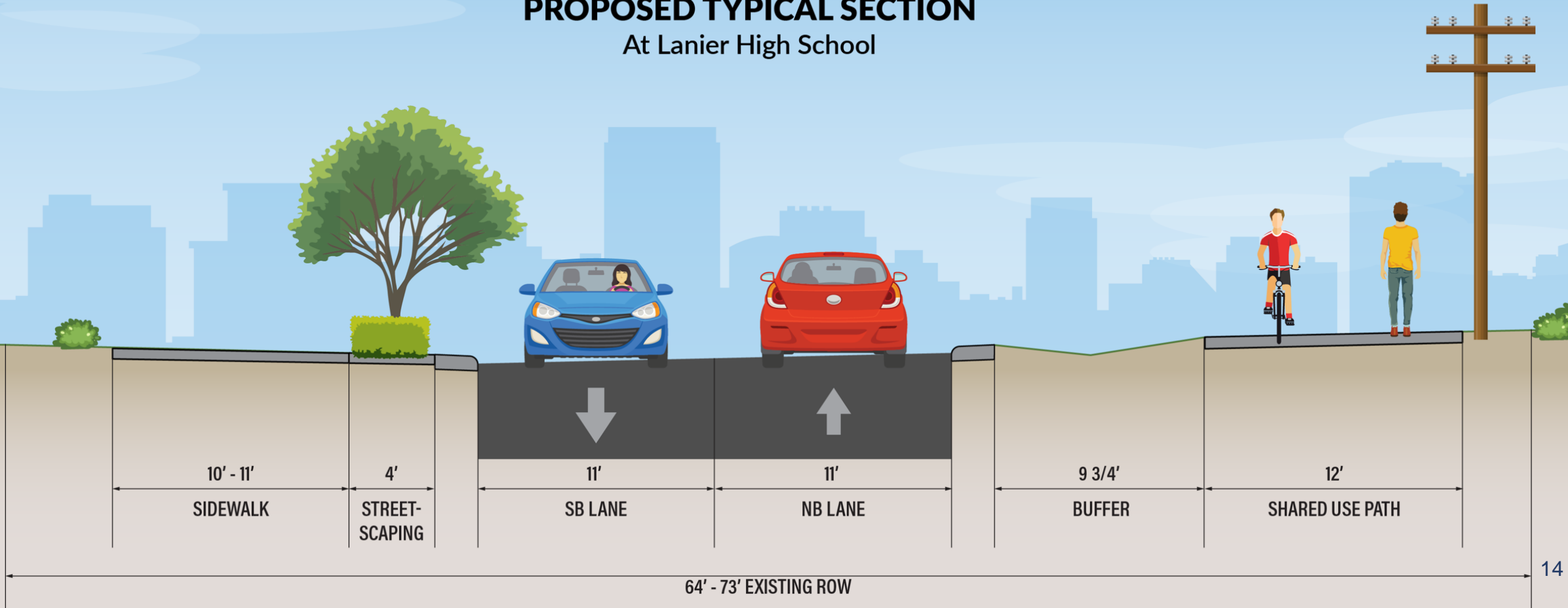




# South Brazos Street (Alazan Creek to Apache Creek)

## Proposed: Typical Street Section at Lanier High School

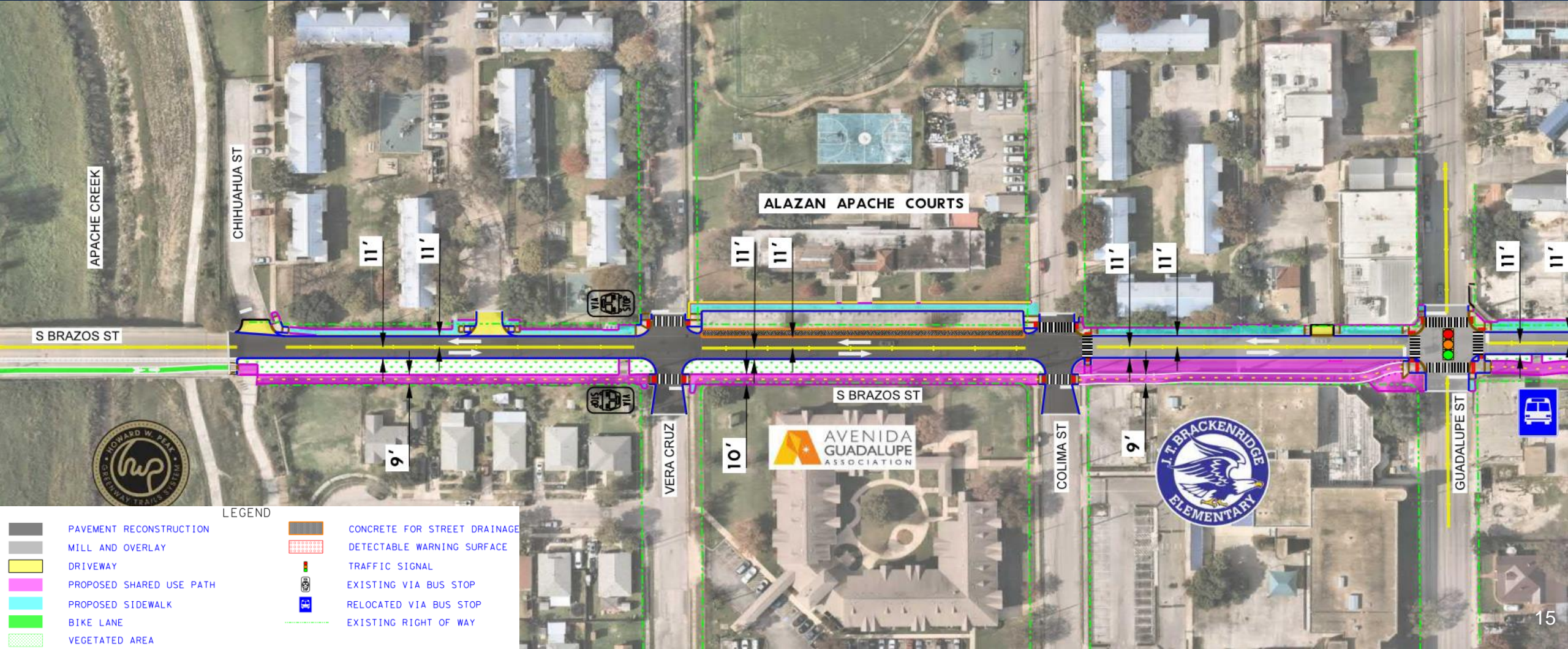
### PROPOSED TYPICAL SECTION At Lanier High School







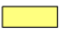










# South Brazos Street (Alazan Creek to Apache Creek)

## Proposed: Street Layout – Apache Creek to Guadalupe St.



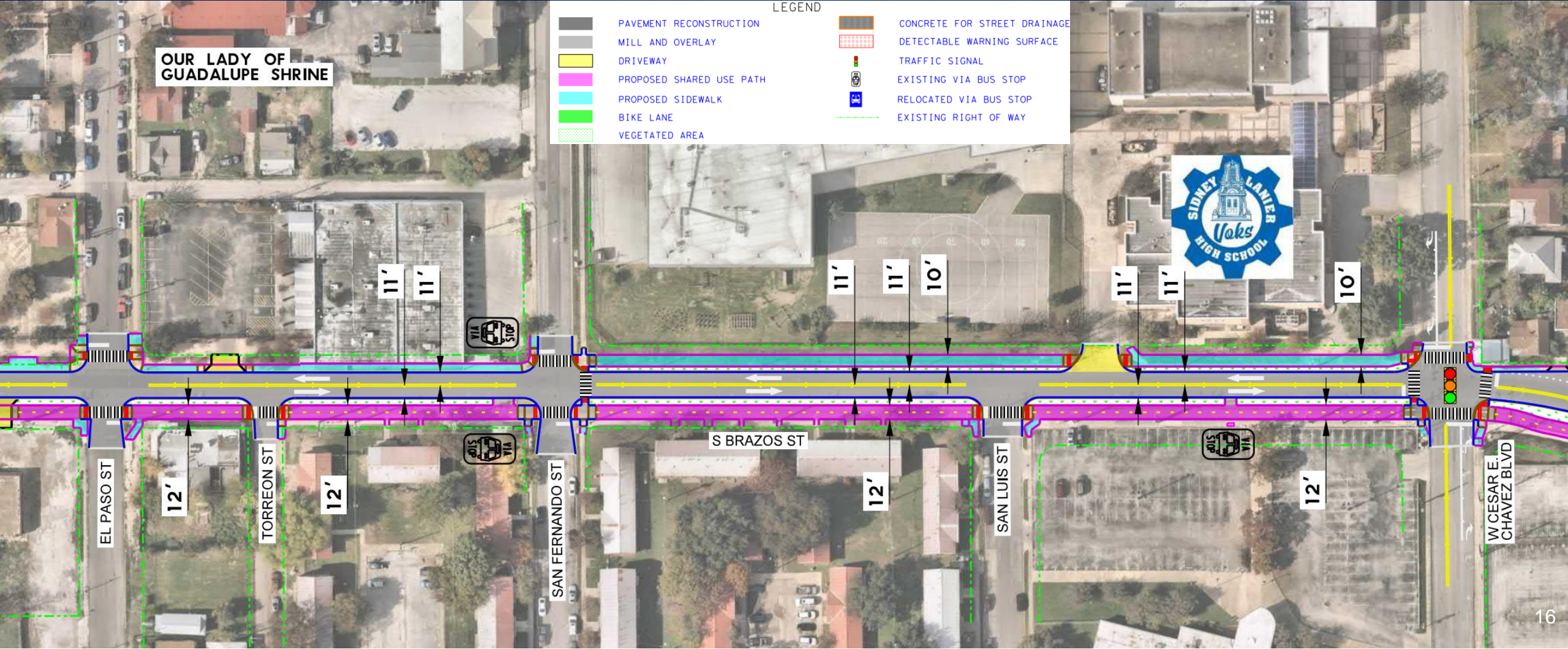
LEGEND

- |   |                          |   |                              |
|---|--------------------------|---|------------------------------|
|  | PAVEMENT RECONSTRUCTION  |  | CONCRETE FOR STREET DRAINAGE |
|  | MILL AND OVERLAY         |  | DETECTABLE WARNING SURFACE   |
|  | DRIVEWAY                 |  | TRAFFIC SIGNAL               |
|  | PROPOSED SHARED USE PATH |  | EXISTING VIA BUS STOP        |
|  | PROPOSED SIDEWALK        |  | RELOCATED VIA BUS STOP       |
|  | BIKE LANE                |  | EXISTING RIGHT OF WAY        |
|  | VEGETATED AREA           |   |                              |

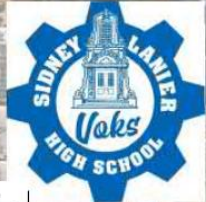


# South Brazos Street (Alazan Creek to Apache Creek)

## Proposed: Street Layout - El Paso St. to W. Cesar Chavez



OUR LADY OF GUADALUPE SHRINE



LEGEND

	PAVEMENT RECONSTRUCTION		CONCRETE FOR STREET DRAINAGE
	MILL AND OVERLAY		DETECTABLE WARNING SURFACE
	DRIVEWAY		TRAFFIC SIGNAL
	PROPOSED SHARED USE PATH		EXISTING VIA BUS STOP
	PROPOSED SIDEWALK		RELOCATED VIA BUS STOP
	BIKE LANE		EXISTING RIGHT OF WAY
	VEGETATED AREA		

12'

TORREON ST

12'

SAN FERNANDO ST

12'

SAN LUIS ST

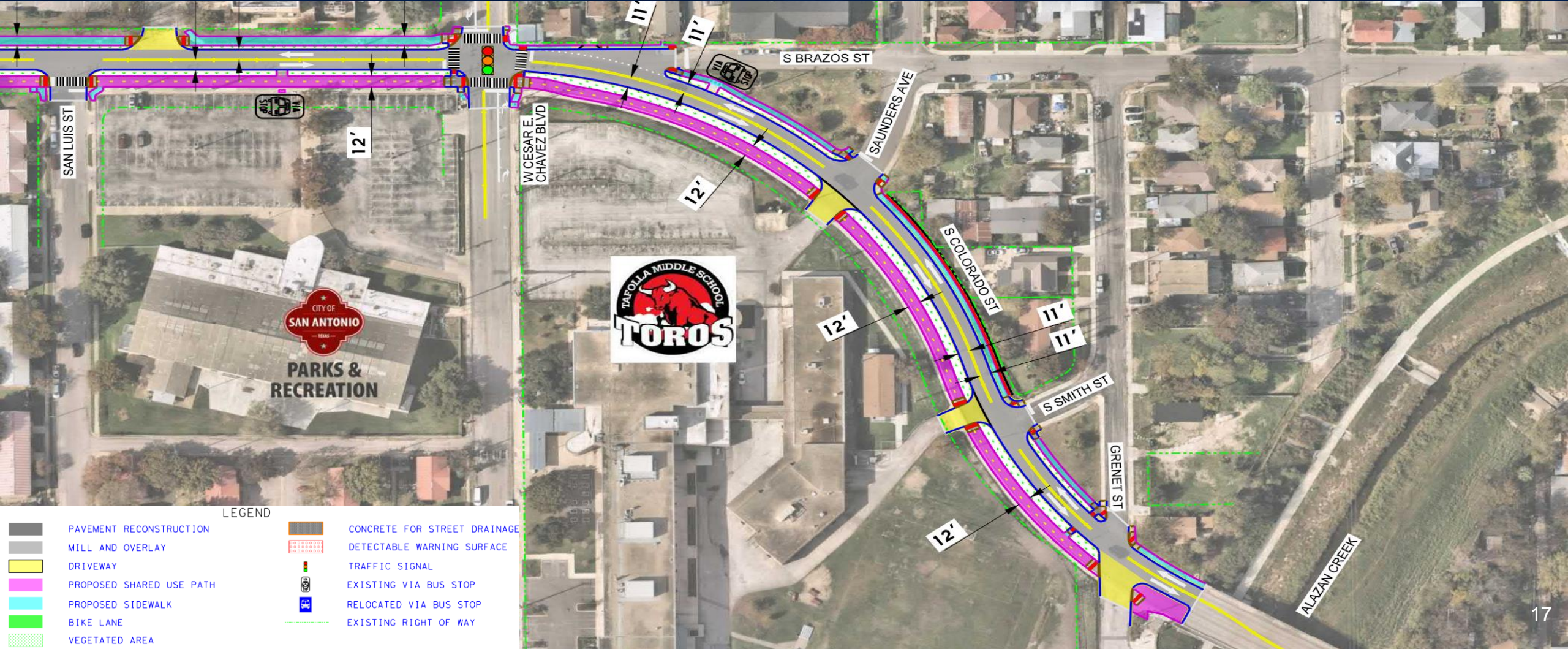
12'

W. CESAR E. CHAVEZ BLVD















# South Brazos Street (Alazan Creek to Apache Creek)

## Proposed: Street Layout - W. Cesar Chavez to Alazan Creek



**LEGEND**

- |   |                          |   |                              |
|---|--------------------------|---|------------------------------|
|  | PAVEMENT RECONSTRUCTION  |  | CONCRETE FOR STREET DRAINAGE |
|  | MILL AND OVERLAY         |  | DETECTABLE WARNING SURFACE   |
|  | DRIVEWAY                 |  | TRAFFIC SIGNAL               |
|  | PROPOSED SHARED USE PATH |  | EXISTING VIA BUS STOP        |
|  | PROPOSED SIDEWALK        |  | RELOCATED VIA BUS STOP       |
|  | BIKE LANE                |  | EXISTING RIGHT OF WAY        |
|  | VEGETATED AREA           |   |                              |



# South Brazos Street (Alazan Creek to Apache Creek)

## Project Schedule

### Project Schedule

- Design Complete: Winter 2024
- Begin Construction: Winter 2026
- End Construction: Summer 2027



# South Brazos Street (Alazan Creek to Apache Creek)

## Public Comments and Questions

- Questions & Answers
- If you haven't already, **please sign-in**
- Identify the following:



### Who

To Communicate With



### Communication Type

Email, Text, Phone Call Or In Person



### Frequency

Daily, Weekly, etc...



---

**Joey Doctor**  
**Senior Management Coordinator**  
(210) 207-8415  
Joe.doctor@sanantonio.gov



[saspeakup.com/southbrazosst](https://saspeakup.com/southbrazosst)

**CONNECT WITH US!**      
**#SA2022Bond | [www.sanantonio.gov/2022Bond](http://www.sanantonio.gov/2022Bond)**

