

Project Background

What is MetroBike?

Austin's public bikeshare program. MetroBike is operated by CapMetro in partnership with the City of Austin.

What is the Strategic Expansion Plan?

A 10-year plan for the growth and development of MetroBike.

The plan has four objectives:

1

Engage the public to ensure MetroBike reflects their needs, goals, and desires.

2

Identify how MetroBike can better integrate with CapMetro's expanding transit network.

3

Create a long-term vision for the MetroBike program that is designed to be flexible enough to evolve with changing needs.

4

Outline resource needs for the MetroBike program to allow CapMetro to adequately prepare for program expansion.

CapMetro *Bikeshare*

MetroBike is getting a new look, new equipment, and a new name. We are excited to bring improved public transportation options to our bike-riding community. The program is being relaunched as CapMetro Bikeshare this summer. You can look forward to the following:

- New fleet of 100% electric assist bikes
- All new docking stations
- More stable ride with a durable bike frame and inline battery placement

Demand Analysis

Key Findings

MetroBike today is mainly serving Downtown and UT. There is an opportunity to **expand to more parts of the region**.

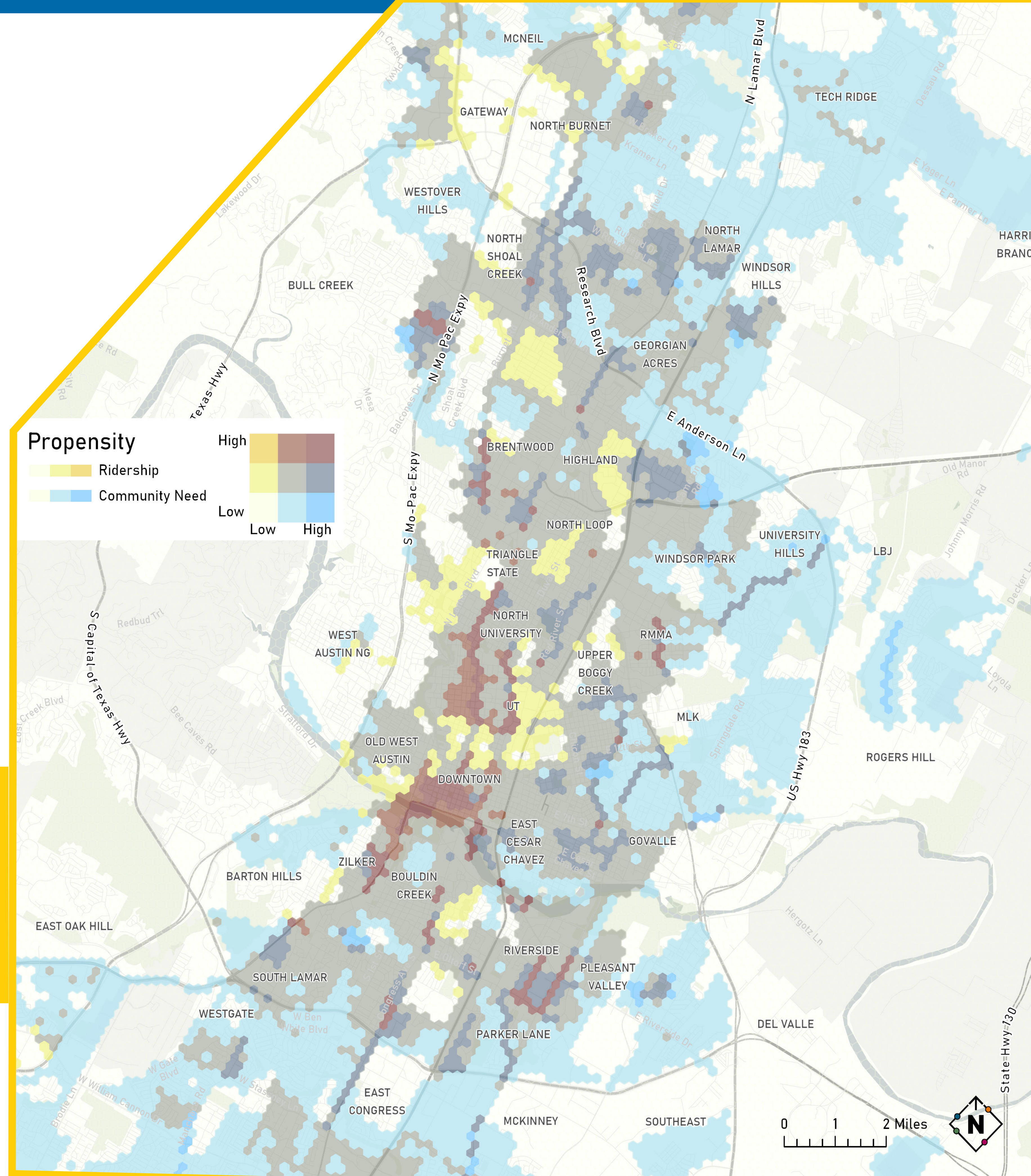
Bikeshare can help **connect people to existing and planned transit** corridors.

Ridership **is demand and driven largely by population and job density**. Areas with a high concentration of people and attractions generate the most bikeshare demand.

CapMetro analyzed where bikeshare can best meet community needs, such as linking people with transit, and improving access to public services and amenities.

Bikeshare Ridership and Community Need Propensity Analysis

The map visualizes both community need and ridership demand, with the dark brown areas illustrating where high need and high demand overlap.

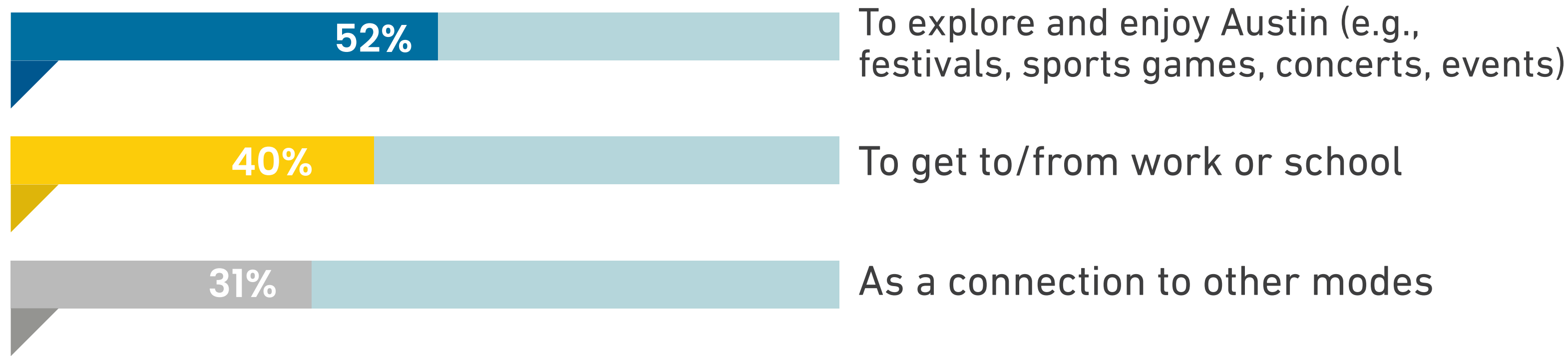


Public Engagement

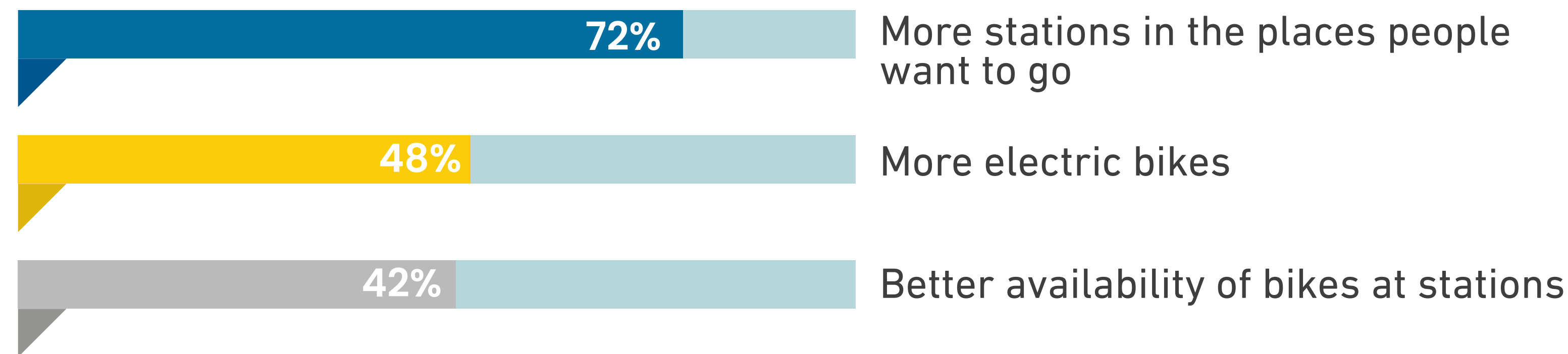
Survey Results

Through in-person and virtual engagement, CapMetro heard from over 1000 people on the future of MetroBike between February and April 2024.

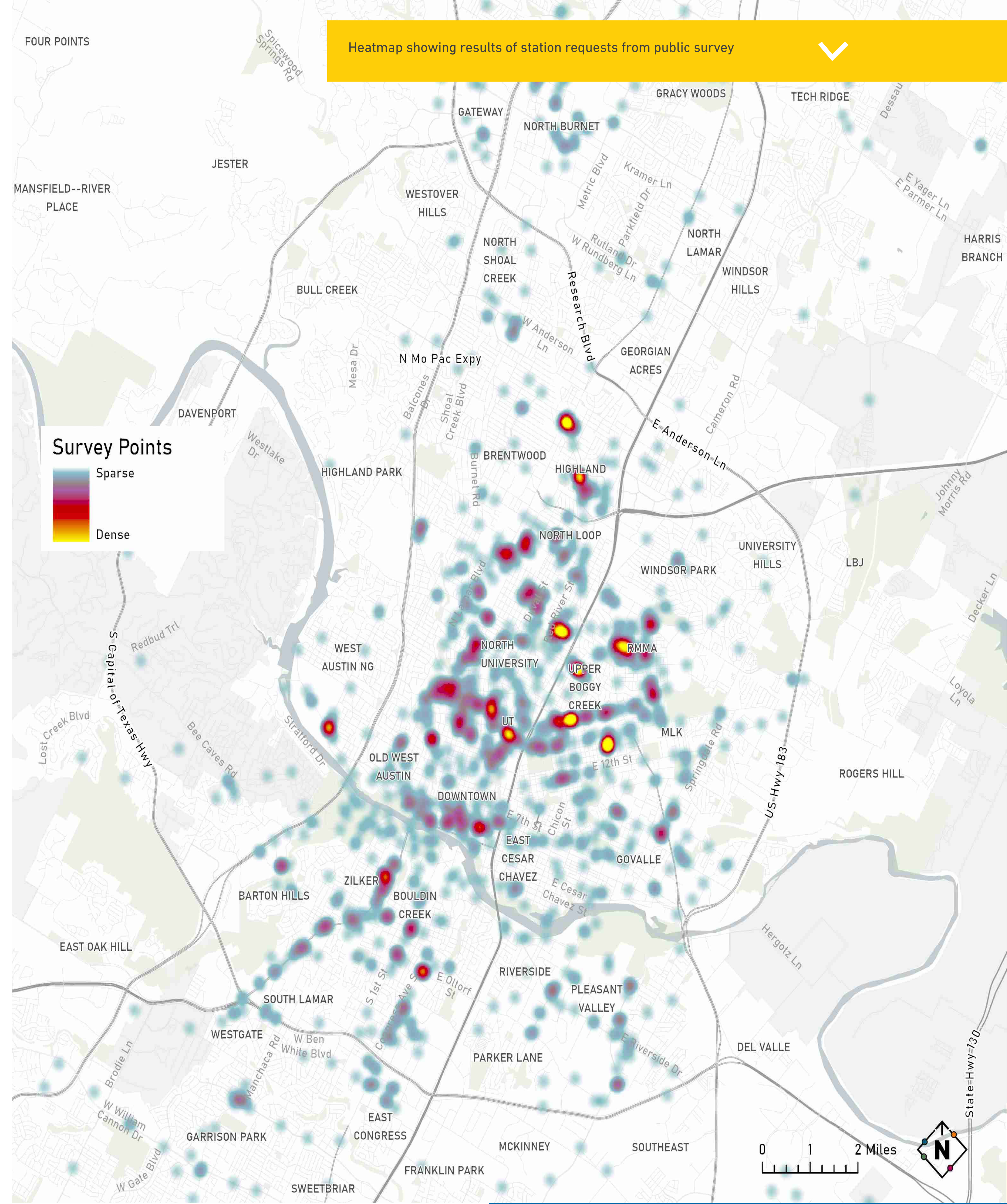
Top Reasons People Used MetroBike:



Top things that would make people use MetroBike more:



Top Reasons People Did Not Use MetroBike:



Expansion Guidelines

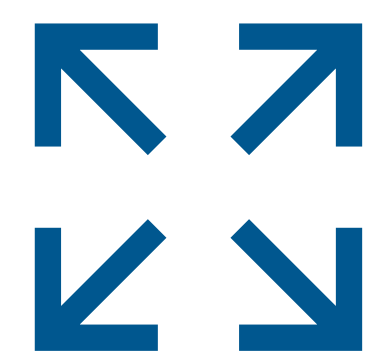
CapMetro developed a set of expansion guidelines to ensure future system growth occurs in a responsible manner.

Guideline Highlights



Proximity to Destinations

Stations should be near trip generators like transit stations, recreation facilities, shopping, and large apartment complexes.



Station Sizing

Stations should be expanded to meet demand. Larger stations may be appropriate in places that are hard to frequently service as well.



Station Density

Stations should be no further than 0.5 miles apart, ideally less than 0.25 miles apart in the core market.



Operational Access

MetroBike staff need to be able to easily access stations for maintenance and rebalancing of bicycles.

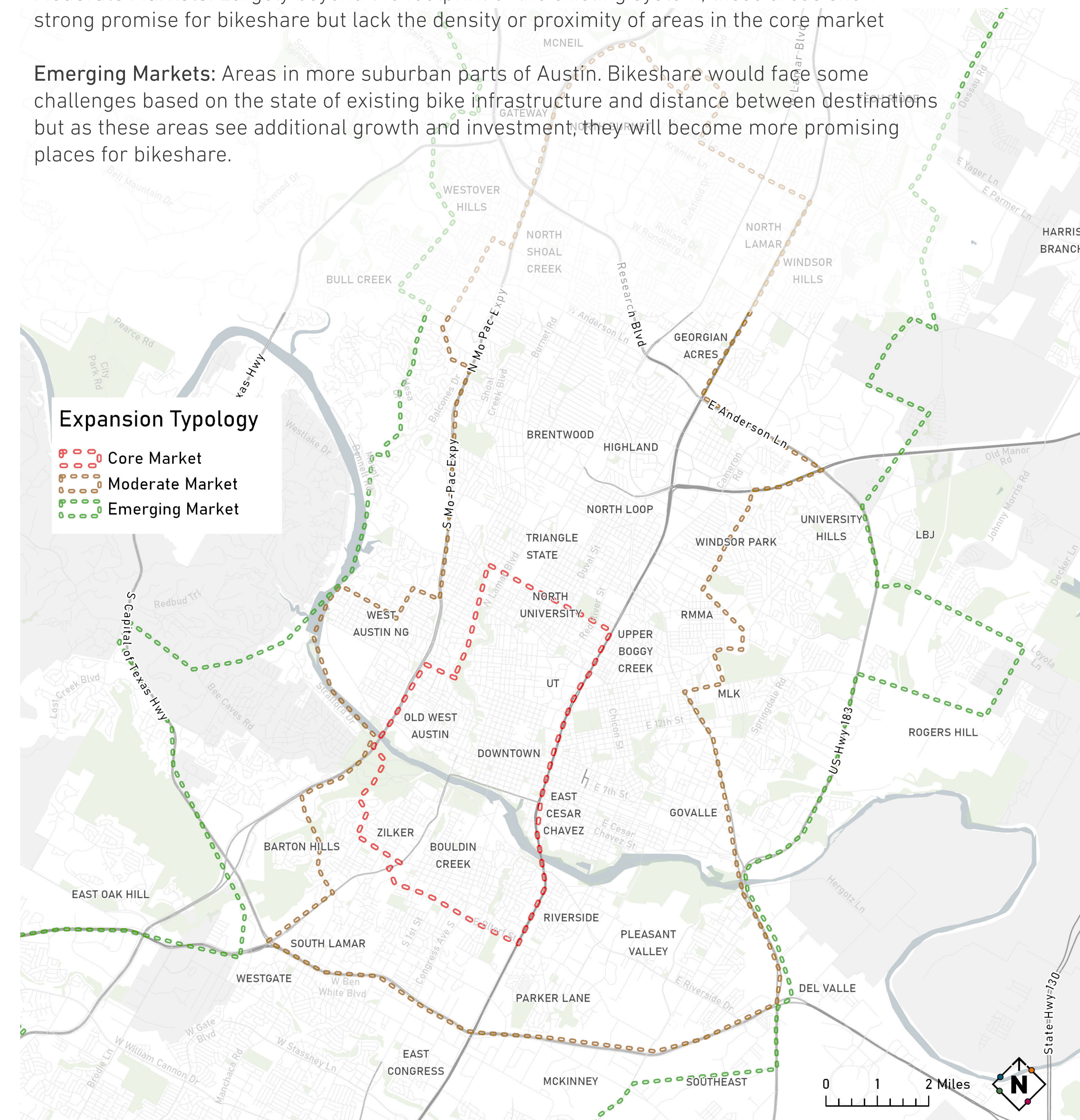
Expansion Typologies

Based on the demand analysis, we divided Austin into three market typologies:

Core Market: Area of Austin with highest demand. Stations here attract trips from across the network.

Moderate Markets: Largely beyond the footprint of the existing system, these areas show strong promise for bikeshare but lack the density or proximity of areas in the core market

Emerging Markets: Areas in more suburban parts of Austin. Bikeshare would face some challenges based on the state of existing bike infrastructure and distance between destinations but as these areas see additional growth and investment, they will become more promising places for bikeshare.



Proposed Expansion Plan

Based on public feedback, expansion guidelines, and the demand analysis, CapMetro has a plan for how the system can grow over the next 10-years:

More Stations

CapMetro is aiming to grow the system from just over 70 stations to more than 300 total stations

Coverage Across Austin

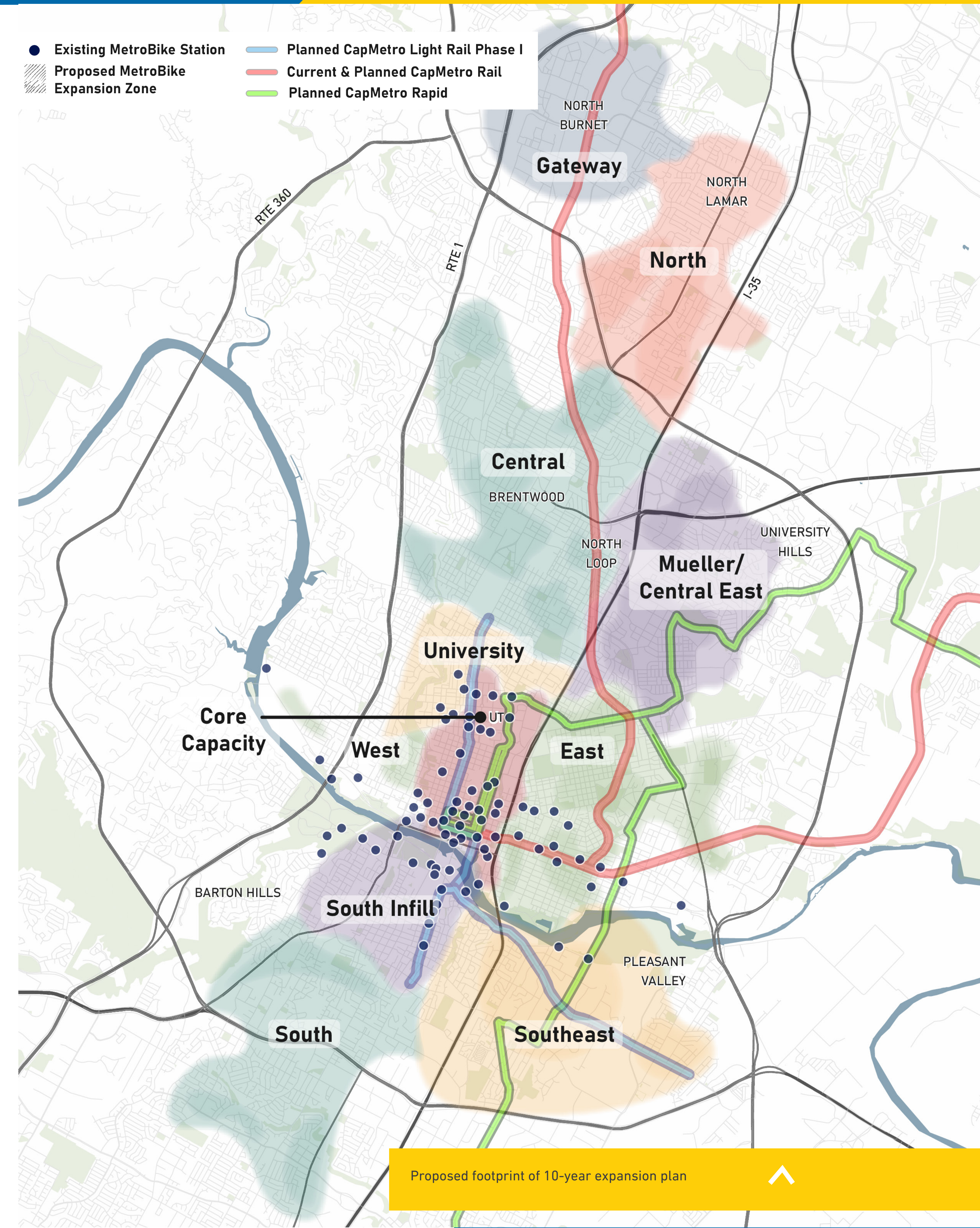
The plan envisions that MetroBike will expand from largely serving Downtown and UT to cover a diverse range of neighborhoods across the city.

Integration with Project Connect

A larger MetroBike system will provide people better ways to access public transit, including the expanded network of Rail, Rapid, and Light Rail lines being built under Project Connect.

Balance Outward Growth with Core Capacity

As the system grows outward, CapMetro plans to also add more stations to neighborhoods already served by MetroBike. These stations will help ensure the system keeps up with growing demand.

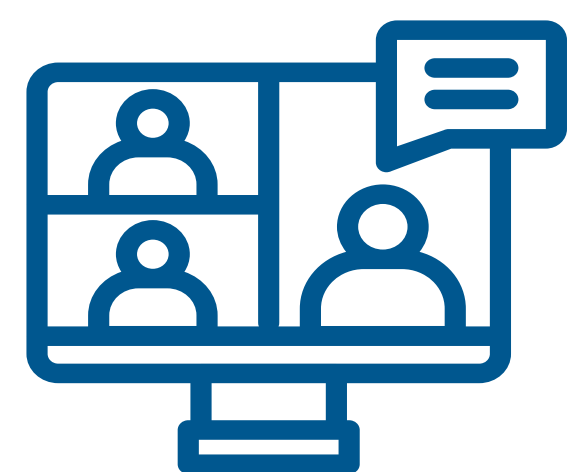


How to Stay Involved

This is a ten-year growth plan for MetroBike. What category of Community Amenities/Destinations should we consider for connections as we expand? (e.g: Libraries, Rec Centers, Park/Trails)

If the expansion would provide you a better connection, what category of Community Amenities / Destinations would get you to use MetroBike more?

What general feedback do you have for the MetroBike team?



Virtual Open House

Members of the public will be able to review project information and provide comment on a virtual open house accessible at the QR code to the right



Study Schedule

