



Hello and welcome to a Community Conversation about the proposed VIA Rapid Silver Line, an Advanced Rapid Transit project designed to move more people faster and farther.

We appreciate your interest and thank you for your participation.

This is a pre-recorded presentation to provide an overview of the proposed project.

Additional project information, including this presentation, can be found at [KeepSAMoving.com](https://www.KeepSAMoving.com) as of Wednesday, January 17, 2024.

**VIA is moving  
more people  
faster and farther  
with Advanced  
Rapid Transit**

## **Today, we'll discuss:**

- Advanced Rapid Transit service
- Proposed VIA Rapid Silver Line
- How to provide your comments



VIA Rapid Silver Line is a key initiative under the Keep SA Moving plan and it responds to San Antonio's growing transportation needs, embodying our commitment to enhancing regional mobility.

This presentation will provide an overview of the project, a review of the proposed improvements, and how you can provide input. At the end of the presentation, there are instructions on how to submit questions and comments. To be included in the official meeting record, comments must be received on or before Monday, February 5, 2024.

Your comments are an important part of this process, and the project team will consider them for project refinements where feasible. You are encouraged to talk to your neighbors and refer them to VIA so they can also make comments and be included in this process. Let's get started!

## What is Advanced Rapid Transit?

**Advanced Rapid Transit, or ART,** is a high-quality, modern public transportation system that is designed to move more people faster and farther.

**VIA Rapid** VIA's new **Advanced Rapid Transit** service that **will provide frequent, reliable and safe transportation options** for a growing San Antonio region.

**VIA Rapid** is part of VIA's family of transportation services, including bus, VIAtrans, VIA Link and **the new VIA Rapid Green Line**—the first VIA Rapid corridor that will operate north to south along San Pedro Avenue. The Silver Line is proposed as the second Rapid corridor.



We're often asked, "what is Advanced Rapid Transit?"

Advanced Rapid Transit, or A.R.T., is a key initiative under the Keep SA Moving plan, designed to help meet growing transportation needs as part of VIA's commitment to improve transit in our region.

It's a high quality, modern public transportation system that is designed to get more people to more places in less time.

"VIA Rapid" is the new Advanced Rapid Transit service for our region that will provide frequent, reliable, and safe transportation options for a growing city.

VIA Rapid is part of a network of VIA services that includes fixed-route bus, Primo, VIA Link, VIAtrans, the VIA Rapid Green Line (running north to south) and proposed Silver Line (running east to west).

## Benefits of Advanced Rapid Transit service



### Saves time

- Planned 10-minute daytime service on weekdays
- Planned 15-minute daytime service on weekends
- Bus-friendly traffic signals
- Bus priority traffic lanes
- Pre-pay for faster boarding times



VIA Rapid saves time with features like 'pay before you board' and 'bus-friendly traffic signals,' offering planned, reliable 10-minute weekday and 15-minute weekend service during daytime hours.

These features are key to reducing commute times and enhancing the transit experience for our community.

## Benefits of Advanced Rapid Transit service



### Simplifies trips

- Faster, more frequent trips to key destinations
- Real-time route information
- Accessible boardings for all
- Level and all-door boarding



VIA Rapid is designed for ease of use, with real-time route information allowing users to know exactly when the bus will arrive so they can plan their day better and spend less time traveling and more time doing the things that matter most.

VIA Rapid also offers accessible boarding with level boarding platforms and boarding from any door, making it easier for you to board in less time and get on your way.

The VIA Rapid service focuses on comfort and convenience, ensuring that transit is a practical option for everyone.

## Benefits of Advanced Rapid Transit service



### Provides more transit options

- Connects more people to more places in less time
- Provides a reliable alternative to driving
- Delivers access to key destinations



VIA Rapid gives you more options for your trip and connects you to more places in less time.

With a reliable alternative to driving, you'll still have access to key destinations throughout San Antonio without having to worry about parking or high rideshare fees to reach important places like jobs, schools, hospitals, and goods and services.

## Benefits of Advanced Rapid Transit service



Connects to schools/jobs/training



Helps with traffic flow



Improves safety



Improves air quality



Supports economic development



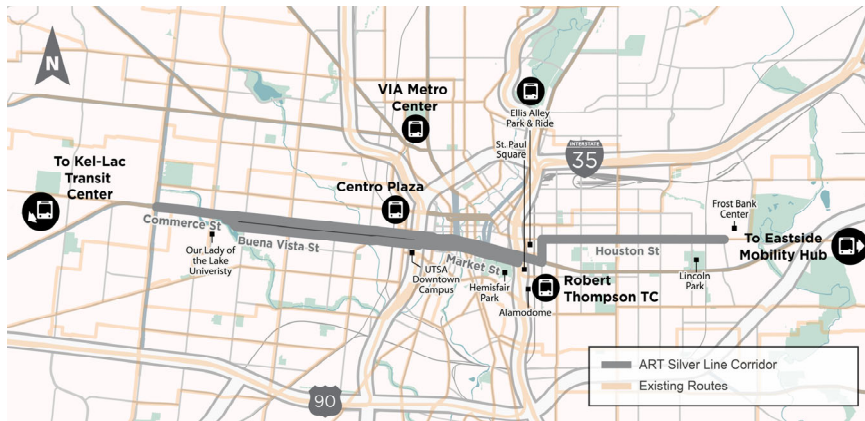
Connects to goods/services



Other benefits of VIA Rapid include:

- Easier access to key destinations and daily needs
- Helping to improve traffic flow
- Improved safety along the corridor
- Reduced greenhouse gas emissions for cleaner air
- Contributing to economic growth that could generate job opportunities
- Enhanced streets and sidewalks that benefit drivers and pedestrians

## Where is the proposed VIA Rapid Silver Line?



The information shown is for illustrative purposes only and is subject to change.

As the project progresses through development, it will include further details that will reflect public and stakeholder input and studies conducted during the environmental process.



The VIA Rapid Silver Line would move more people living, working and traveling on the city's East and West sides faster and farther.

The proposed project is designed to offer riders frequent, reliable transit service with new, convenient stations, simple payment options and quicker, easier boarding.

The proposed corridor would run east to west through Downtown, from just west of Our Lady of the Lake University to the Frost Bank Center.

The project is not currently funded for construction and needs community input and support to progress.





## Why is the proposed Silver Line needed?

Estimated Growth

**Bexar County (2020-2045)**

**+922,010**  
new residents

**^44%**  
increase

**+564,404**  
new jobs

**^56%**  
increase

Estimated Growth

**Silver Line Corridor (2020-2050):**

**+34,160**  
new residents

**^51%**  
increase

**+40,010**  
new jobs

**^33%**  
increase

The proposed VIA Rapid Silver Line project expands transportation choices for residents **along the East and West sides** of San Antonio. The project would also **facilitate continued economic growth and connectivity** to jobs, education, recreational activities, goods and services, medical care and other essentials of daily life.

\*Source: AAMPO, Mobility 2050, 2045, 2019

Calculated based on population and employment estimates within ½ mile of potential station areas using Transportation Analysis Zone data from AAMPO's travel demand forecasting model.



You might ask, “Why do we need the VIA Rapid Silver Line?”

### 1. TO GROW WITH SAN ANTONIO

Fast, frequent, reliable public transit options are needed to help us keep up with expected population and job growth.

Between 2020 and 2045, Bexar County's population is anticipated to grow by 44%. In addition, the area along the proposed Silver Line corridor is expected to experience a 51% increase in population by 2050.

Job growth in these areas, including both Bexar County and the Silver Line Corridor, is also projected to see significant increases, with double-digit percentage growth anticipated from 2020 to 2050. We need a transit system that moves more people safely and reliably.

By offering better transportation choices, we can continue growing and connect people to jobs, education, training, medical care and other essentials of daily life.

## Station types

Curbside station concept



Center running station concept



The station renderings provided are conceptual and reflect potential station types planned for the VIA Rapid Green Line corridor. The exact location and design for the proposed Silver Line stations are in the initial phase of development.



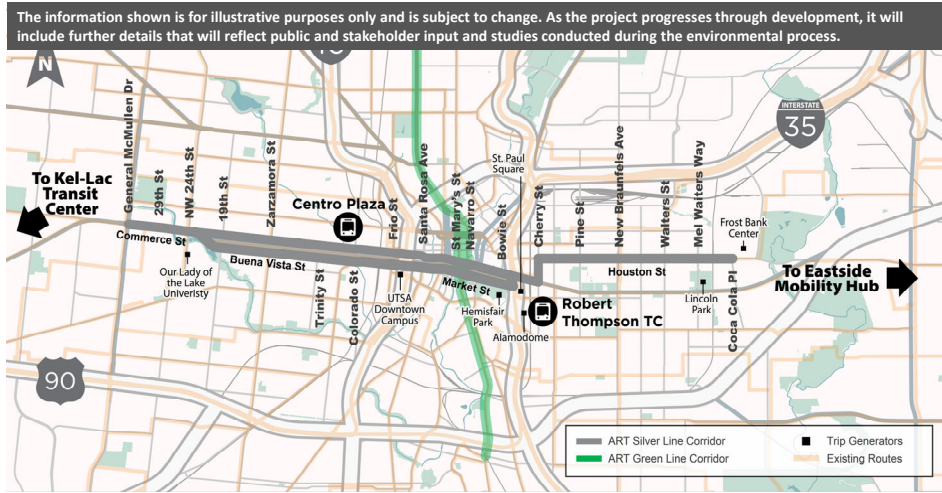
While potential station locations are being evaluated, here are some concepts for station design.

On the left, you'll see a concept for a curbside station, and to the right, a concept for a center-running station.

These station renderings reflect potential station types planned for the VIA Rapid Green Line corridor. The exact location and design for the proposed Silver Line stations are in the initial phase of development, including gathering your feedback about station location and type.

## What are the factors influencing station locations?

- Accessibility
- Population density
- Proximity to key destinations
- Community input
- Connectivity and existing ridership
- Safety
- Environmental impact

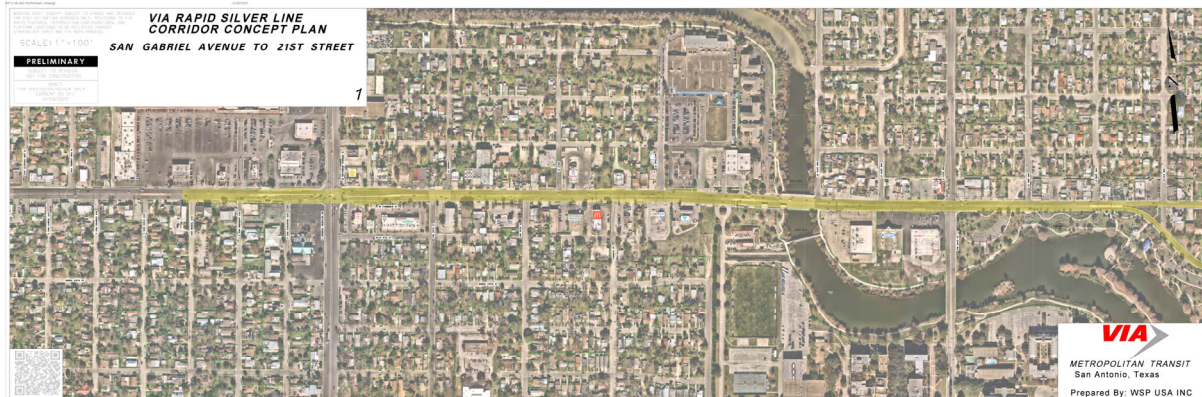


Planning for the proposed Silver Line is in its early stages.

Factors like safety, accessibility, and environmental impact are being considered, along with community feedback, needs, and priorities.

Sharing your thoughts and comments about station locations and other project features is an important step in the process.

## Roll plots



Maps like these, called “Roll Plots” are available online at [KeepSAMoving.com](http://KeepSAMoving.com) and in print at upcoming community meetings for your review.

This close-up shows one section of the proposed corridor, which includes San Gabriel Avenue to 21st Street.

VIA team members are available to review these maps with you. Call us at 210-362-2590 for help using these roll plots.

## Environmental studies by VIA in progress

These are the social, economic and environmental resources being studied:



Historical and archaeological Resources



Community impacts and environmental justice



Hazardous materials



Biological resources



Water resources (Wetlands)



Noise and air quality



Land use and park land



Environmental constraints are key areas to assess and avoid, if possible, when planning improvements. Please see the interactive environmental map.



Because the VIA Rapid projects are funded with federal dollars, VIA is required to evaluate the potential impacts to the human and natural environment that could result from the proposed project and provide opportunities for the public to provide input.

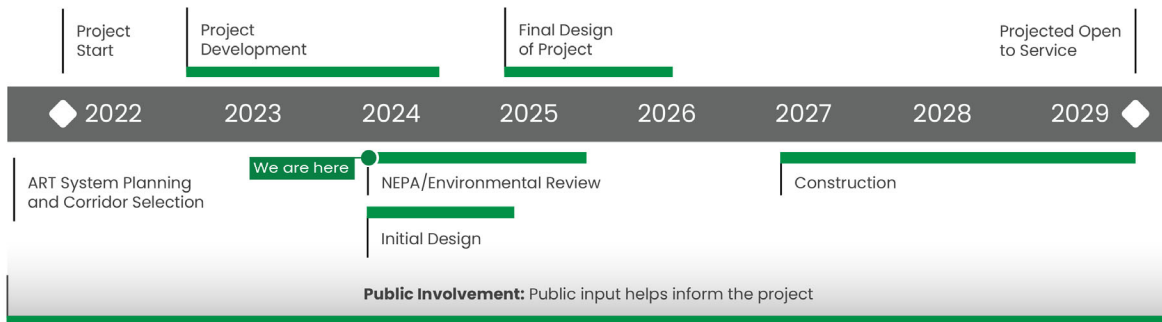
The environmental review process we follow is in accordance with the National Environmental Policy Act of 1969, otherwise known as NEPA.

This federally required process helps decision-makers and the public make an informed decision on how to proceed with the proposed project. Two major purposes of the NEPA process are better informed decisions and community involvement.

Part of the process is to evaluate environmental resources in the study area and to assess the potential impacts. We look at things like water resources, traffic noise, vegetation and wildlife, and social and community impacts.

We encourage you to look at our environmental constraints map as part of the exhibits at the community conversation meetings. Environmental constraints are key areas that we need to assess and avoid, if possible, when planning improvements.

## Anticipated schedule



This timeline is approximate and subject to change.



The process to identify, evaluate, approve, and implement the VIA Rapid Silver Line requires several steps and will last several years.

The development of this proposed project is marked by extensive community involvement which is fundamental to each phase.

First, we PLAN. VIA is in the process of project development and environmental study, and we expect this phase to conclude in 2025.

In DESIGN, VIA will advance to final design from 2025 to 2026 in order to get ready for construction.

Additional activity occurs such as right-of-way acquisition and utility adjustments.

Finally, CONSTRUCTION. Construction can take up to three years for completion, and we anticipate a project opening date as early as 2029 if the project gain public support and environmental approval. Please note that funding for construction still needs to be identified.

Let's continue to have conversations about this project and how it could change the way we move in San Antonio.

As the project progresses through development and implementation, VIA will continue to engage with the community and request your input as the project is further defined.

## Tell VIA your thoughts

### Community feedback

# We need your input

- What do you like about the proposed project?
- What concerns do you have about the proposed project?
- As we plan for this project, what do you want VIA to know about the community and this corridor?



We have a series of questions to ask you as noted on the screen and you can give us your feedback at our in-person community conversations meetings or online at [KeepSAMoving.com](http://KeepSAMoving.com).

VIA is committed to developing this project in collaboration with the community, in a way that meets project goals and considers community needs and priorities.

## How to comment



**Comment form**  
Submit a comment form  
in-person at the meeting



**Online**  
Submit a comment form online.  
**KeepSAmoving.com/via-  
rapid-silver-line/**



**Email**  
Submit a comment by email to  
**KeepSAmoving@viainfo.net**



**Mail**  
Submit a comment by US  
mail to:  
  
**Attn:**  
VIA Rapid Silver Line Project  
  
**c/o:**  
Government and  
Community Relations  
7067 San Pedro Avenue  
San Antonio, TX 78216



To be included in  
the official public  
meeting summary  
document, all  
comments must be  
received or  
postmarked by  
**Monday,  
February 5, 2024**



Your comments are important. You can submit them in a few ways:

- Fill out a comment form at an in-person community meeting.
- Submit an online comment form at [KeepSAmoving.com](https://KeepSAmoving.com).
- Send an email to [KeepSAmoving@viainfo.net](mailto:KeepSAmoving@viainfo.net).
- Mail your comments to 7067 San Pedro Avenue. San Antonio, Texas 78216.

Please note, all comments must be received or postmarked by Monday, February 5, 2024, to be included in the official meeting record. Remember, your input helps us better understand your values and concerns.

Comments are not a vote, but what you provide helps inform the project.





## Questions?

Learn more at  
**KeepSAMoving.com**



Call: 210-362-2590



Email: [KeepSAMoving@viainfo.net](mailto:KeepSAMoving@viainfo.net)

17

The VIA Rapid Silver Line, part of the Keep SA Moving plan, is set to transform San Antonio's transit landscape.

You can learn more and sign up for updates at [KeepSAMoving.com](http://KeepSAMoving.com).

Your feedback is important as we move toward finalizing this project and securing funding.

We appreciate your time today and encourage you to participate and stay engaged.

This concludes our presentation. Thank you.