

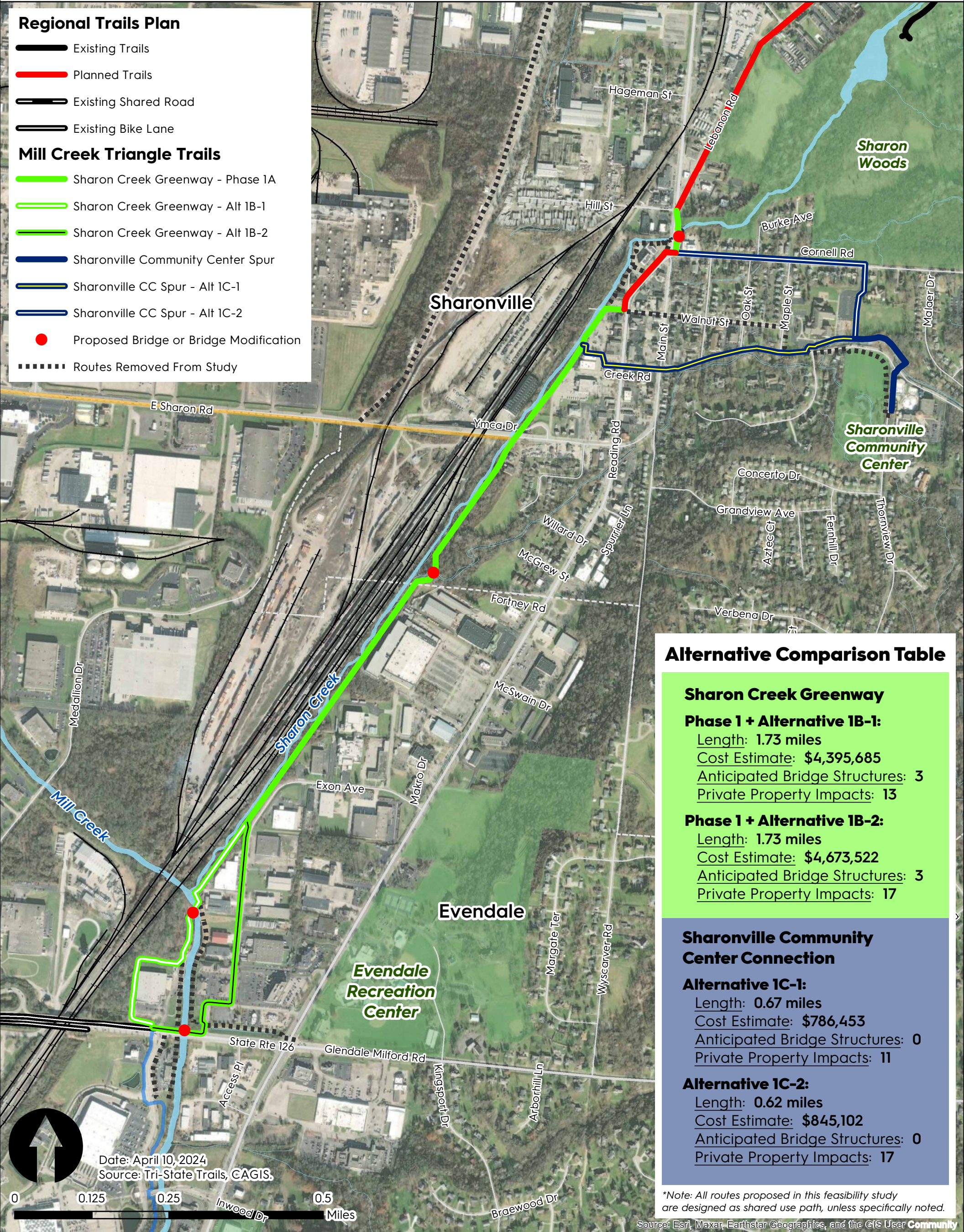


Regional Trails Plan

- Existing Trails
- Planned Trails
- Existing Shared Road
- Existing Bike Lane

Mill Creek Triangle Trails

- Sharon Creek Greenway - Phase 1A
- Sharon Creek Greenway - Alt 1B-1
- Sharon Creek Greenway - Alt 1B-2
- Sharonville Community Center Spur
- Sharonville CC Spur - Alt 1C-1
- Sharonville CC Spur - Alt 1C-2
- Proposed Bridge or Bridge Modification
- Routes Removed From Study



Alternative Comparison Table

<p>Sharon Creek Greenway</p> <p>Phase 1 + Alternative 1B-1:</p> <p>Length: 1.73 miles</p> <p>Cost Estimate: \$4,395,685</p> <p>Anticipated Bridge Structures: 3</p> <p>Private Property Impacts: 13</p> <p>Phase 1 + Alternative 1B-2:</p> <p>Length: 1.73 miles</p> <p>Cost Estimate: \$4,673,522</p> <p>Anticipated Bridge Structures: 3</p> <p>Private Property Impacts: 17</p>
<p>Sharonville Community Center Connection</p> <p>Alternative 1C-1:</p> <p>Length: 0.67 miles</p> <p>Cost Estimate: \$786,453</p> <p>Anticipated Bridge Structures: 0</p> <p>Private Property Impacts: 11</p> <p>Alternative 1C-2:</p> <p>Length: 0.62 miles</p> <p>Cost Estimate: \$845,102</p> <p>Anticipated Bridge Structures: 0</p> <p>Private Property Impacts: 17</p>

*Note: All routes proposed in this feasibility study are designed as shared use path, unless specifically noted. Source: Esri, Maxar, Earthstar Geographics, and the GIS User Community

Date: April 10, 2024 Source: Tri-State Trails, CAGIS.

