

8.17/99

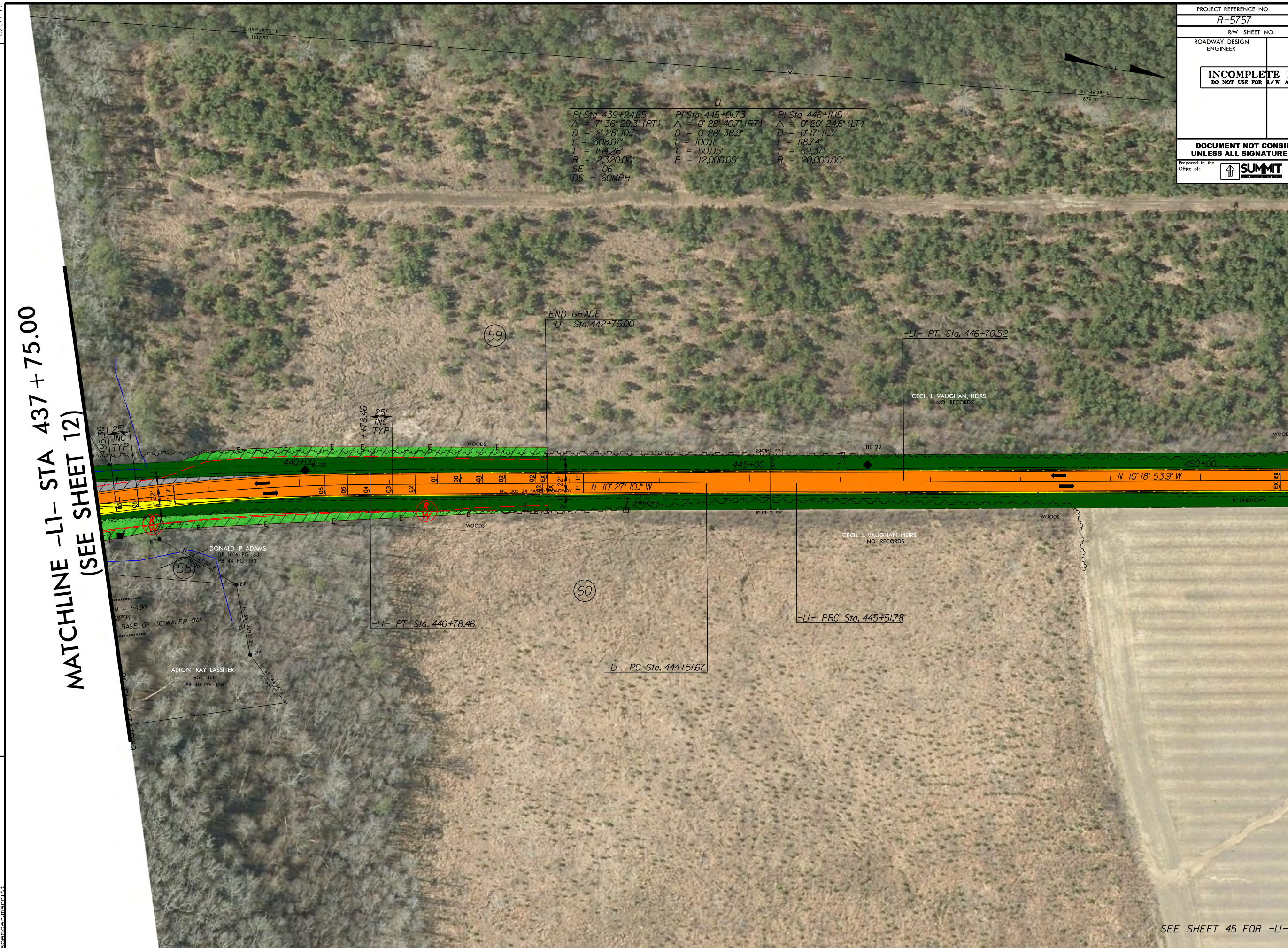
PROJECT REFERENCE NO. <b>R-5757</b>	SHEET NO. <b>13</b>
RW SHEET NO.	
ROADWAY DESIGN ENGINEER	HYDRAULICS ENGINEER
<b>INCOMPLETE PLANS</b> DO NOT USE FOR R/W ACQUISITION	
<b>DOCUMENT NOT CONSIDERED FINAL</b> UNLESS ALL SIGNATURES COMPLETED	
Prepared in the Office of: <b>SUMMIT</b>	NC FIRM LICENSE No. P-0339 504 Meadows Drive Hillsborough, NC 27278 (919) 732-3883 (919) 732-6676 (FAX)

-LI-

PI Sta 439+24.65	PI Sta 445+01.73	PI Sta 446+11.15
$\Delta = 7^{\circ} 36' 29.3"$ (RT)	$\Delta = 0^{\circ} 28' 40.7"$ (RT)	$\Delta = 0^{\circ} 20' 24.6"$ (LT)
D = 2' 28" 10.7	D = 0' 28" 38.9	D = 0' 17" 11.3
L = 308.07'	L = 100.11'	L = 118.74'
T = 154.26'	T = 50.05'	T = 59.37'
R = 2,320.00'	R = 12,000.00'	R = 20,000.00'
SE = .06		
DS = 60MPH		

**MATCHLINE -LI- STA 437 + 75.00**  
**(SEE SHEET 12)**

**MATCHLINE -LI- STA 451 + 00.00**



REVISIONS

R-5757-Roadway-13-11-11.dgn  
 8/17/99  
 13

SEE SHEET 45 FOR -LI-5A- PROFILE