

**2022-2027**

**BOND**

**PROGRAM**

City of San Antonio



**PUBLIC WORKS**

**Nani Falcone Park**

**Public Input Meeting**

November 8, 2023 | Presented by Public Works

# Agenda

---

- Welcome and Introductions
- Project Information
- Consultant Presentation
- Public Comments & Questions

**2022-2027**

**BOND**

**PROGRAM**

City of San Antonio



PROPOSED 2022-2027

# BOND PROGRAM

City of San Antonio



## INFORMATION GUIDE



# APPROVED

## May 7, 2022



# Nani Falcone Park

## Project Staff & Design Team

- **Project Design Team:**
  - Studio Balcones: Jennifer Orr, Kat Mays, Allison Bodin
- **COSA Staff:**
  - Tony Forshage – Parks and Rec. Asst. Manager
  - Eric Reyna – Parks and Rec. – PM
  - Jamaal Moreno – Sr. Landscape Architect - PWD
  - Sean Duncan – Landscape Architect- PM -PWD



# Nani Falcone Park

## Project Scope

- **2022-2027 Bond Program**
  - Under Proposition C: Parks, Recreation, and Open Space Improvements funded 82 projects totaling \$271.915 million
  - Project Funding for Nani Falcone: \$750,000
- **Bond Language Scope:**
  - General park improvements within available funding.

# Nani Falcone Park

## Project Background

- 2012-2017 Bond: Park received \$466,000 for general park improvements and parking expansion.
  - Final scope included a 44,000 square foot dog park, drinking fountain, trash receptacles, bike rack, new entry drive, new parking for 13 vehicles and overflow temporary turf parking for an additional 17 vehicles.
- 2017-2022 Bond: Park received \$250,000 for general park improvements.
  - Final scope included two shade canopies in the dog park with associated accessible walkway, 6 solar powered security lights in the existing parking lots along Mystic Park Drive, and wheel stops installed in the turf parking areas to help maximize parking efficiency.
- Other existing amenities include a Disc Golf Course, pavilion, educational overlook, playground, skate plaza, portable restrooms, and a 1.10 mi walking trail.

# Nani Falcone Park

## Meeting Purpose

### ■ Conceptual Plan

- This project includes a Conceptual Plan for the recently acquired 9-acres off Guilbeau Road which expands the park to 74.3 acres.
- A conceptual plan will help develop a community vision for the 9-acres that responds to the site's opportunities and constraints and that is complementary to the existing park.
- Help us develop a conceptual plan that illustrates the type and locations of improvements and amenities you would like to see in your park.

# Nani Falcone Park

## Trailhead at Guilbeau Road

- Phase 1 Development
  - 29 pervious parking stalls
  - Bioswale feature
  - Limestone seating
  - Water fountain
  - Bike repair station
  - Bike racks
  - Trash and recycle receptacles
  - Trail Signage
  - Landscaping
- Phase 2 development (unfunded)
  - 50 pervious parking stalls





# Nani Falcone Park

## Existing Site Images (SB – presentation)



Skateboard Park



Dog Park (Small Dogs)



Dog Park (Large Dogs)



Parking next to Dog Park & Skateboard Park

# Nani Falcone Park

## Existing Site Images (SB – presentation)



SHADED PICNIC TABLES

Pavilion near Playground



Playground



HEALTHY SHADE TREES

MULTIPLE SEATING OPPORTUNITIES

Seating



MAIN TRAIL

Trail around Park



Drainage Way through Park

# Nani Falcone Park

## Existing Site Images (SB – presentation)



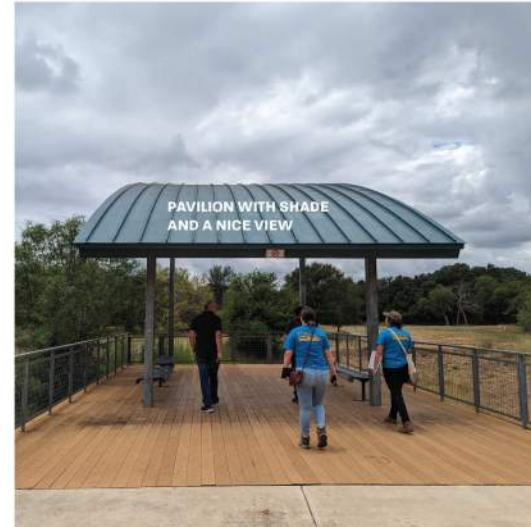
NATIVE PLANTINGS  
NEAR CREEK BED

Grasses in Drainage way



SHADED TRAIL

Typical trail condition around wooded areas.



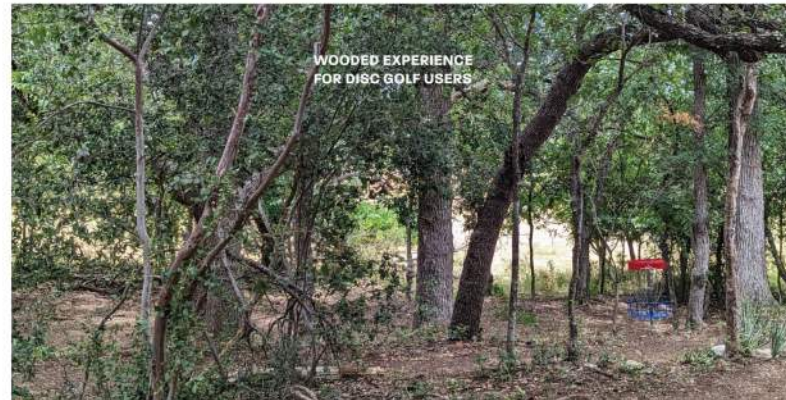
PAVILION WITH SHADE  
AND A NICE VIEW

Second Pavilion



VIEW FROM PAVILION

Disc golf Hole #8



WOODED EXPERIENCE  
FOR DISC GOLF USERS

Disc golf Hole #9

# Nani Falcone Park

## Existing Site Images (SB – presentation)



New Trail Head w/ Parking in construction



New Trail Head w/ Parking in construction



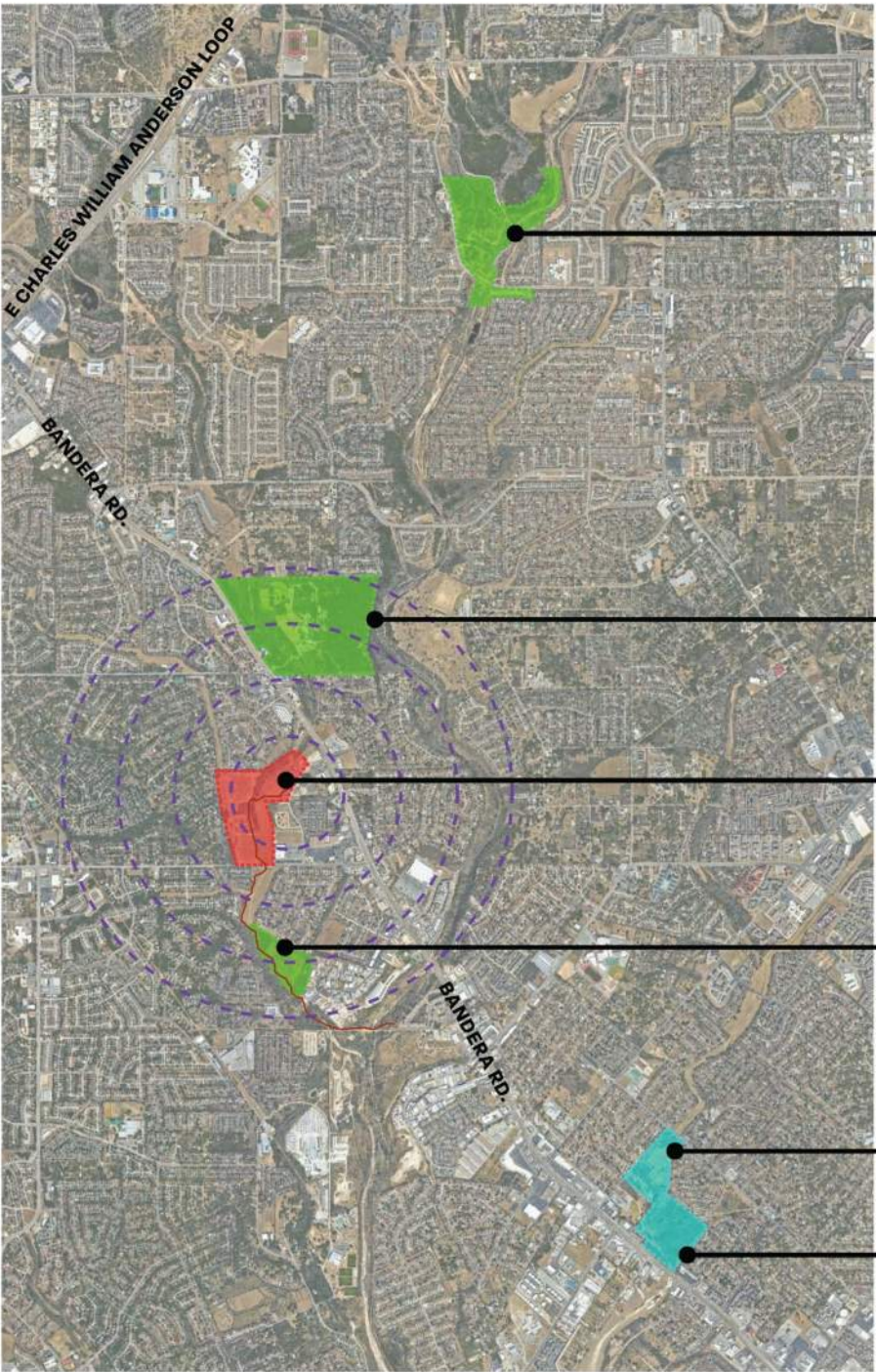
French Creek Greenway Trail

# Nani Falcone Park

## Existing Site Images (SB – presentation)



# Existing Site Program & Nearby Parks (SB – presentation)



**BAMBERGER PARK**

- 15 MIN. DRIVE
- 19 MIN. BIKE

**OP SCHNABEL PARK**

- 5 MIN. DRIVE
- 9 MIN. BIKE

**NANI FALCONE PARK**  
(PROJECT SITE & STARTING POINT)

**FRENCH CREEK PARK**

- 5 MIN. DRIVE
- 7 MIN. BIKE

**RAYMOND RIMKUS PARK**

- 8 MIN. DRIVE
- 25 MIN. BIKE

**HUEBNER ONION NATURAL AREA PARK**

- 9 MIN. DRIVE
- 25 MIN. BIKE

**LEGEND**

-  Leon Valley Parkland
-  City of San Antonio Parkland
-  Project Site
-  French Creek Trail
-  1/4 Mile Radius  
(10 Minute Walk Radius)

# Existing Site Program & Nearby Parks (SB – presentation)

### BAMBERGER PARK

- Playground
- Trails: 2.5 miles (total Length)

### OP SCHNABEL PARK

- Playground
- Trails: 8.22 miles (total length)
- (2) Basketball Court
- Amenities
  - (2) Pavilions
  - YMCA (Payment Required)
  - Northside Suburban Little League (Payment Required)

### FRENCH CREEK PARK

- Trails: 0.6 miles (total Length)

### RAYMOND RIMKUS PARK

- (2) Playground
- Trails: 0.5 miles + 0.75 mile trails
- Soccer Field
- Softball Field
- Tennis Courts
- Basketball Court
- (2) Volley Ball Pit
- Amenities
  - (2) Pavilions

### HUEBNER ONION NATURAL AREA PARK

- Trails: 0.9 miles (total Length)



### NANI FALCONE PARK

- Playground
- Trails: 1.1 miles (total Length)
- Baseball Field
- Dog Park
- Disc Golf (21 hole course)
- Skateboard Park
- Amenities
  - (2) Pavilions

# Nani Falcone Park: Site Plan (SB – presentation)



**LEGEND**

- Flood Hazard Zone (1% Annual Change Flood Invert, 2020)
- French Creek Trail
- Nani Falcone Park Trail
- Creek / River

**KEY LEGEND**

- 1 Baseball Field
- 2 Creek / River
- 3 Dog Park
- 4 French Creek Trail
- 5 Nani Falcone Park Trail
- 6 Pavilion
- 7 Parking Lot
- 8 Parking Lot Under Construction
- 9 Play Ground
- 10 Skateboard Park
- 11 Trailhead
- 12 Trail Node

NANI FALCONE PARK SITE PLAN  
 08.23.2023  
 SCALE 1" = 100'

**STUDIO BALCONES**  
 ARCHITECTS



# Nani Falcone Park

## Feedback From Meeting 1 (SB – presentation)



- Comments: Northeast side of Park
  - Additional parking
  - Restroom
  - Relocate youth baseball field
  - Improved accessibility
  - Pollinator habitat / No mow zones
  - More trees to provide shade
  - Upgrading pedestrian crosswalk from Library for safety
  - Dog Park Updates
  - Children's play improvements/additions
    - More shade for existing structures
    - Children's Pump Track / Skateboard Expansion
    - Splash Pad

# Nani Falcone Park

## Feedback From Meeting 1 (SB – presentation)



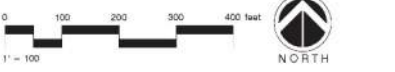
- Comments: South side of Park
  - Pavilion with picnic benches
  - Walking nature trail
  - Provide planted buffers between the park and residences
  - Provide shade with trees
  - Pollinator habitat / No mow zones
  - Provide spaces for recreational sports
  - More separation between children's play at the north end of the park and disc golf users

### Nani Falcone Park - Overall Plan

Legend (Proposed Improvements Only)

- 1. Additional Parking w/ Drop-Off
- 2. Meadow - No Mow Zone
- 3. Shade Sail
- 4. Vegetated Bioswale
- 5. Play Berm
- 6. Restroom
- 7. Play Area (Trike Track, Nature Play, Splash Pad)
- 8. Little League Field
- 9. Dog Park Updates (Re-mulch area, Agility course, Shade Sail, Water spout)
- 10. Upgrade traffic calming devices recommended (Speed bump or traffic light)
- 11. Children's Pump Track
- 12. Open Lawn
- 13. Future Sport Courts Area
- 14. Disc Golf Putting Area
- 15. Disc Golf - Tee #1
- 16. Disc Golf - Hole #1
- 17. Disc Golf - Tee #2
- 18. Disc Golf - Hole #2
- 19. Looped Trail (.34 miles)
- 20. Covered Pavilion
- 21. Youth Soccer Field
- 22. Concrete Picnic tables at trail (3x)
- 23. Reforestation Edge of Park
- 24. Meadow - No Mow Zone (w/ gravel paths)
- 25. Pollinator Garden

**1. RELOCATE**  
**2. REVAMP**  
**3. UNIFY**  
**4. ECOSYSTEM SERVICES**  
**5. HEALTH & SAFETY**



# Nani Falcone Park - Northeast Corner Enlargement

## Legend (Proposed Improvements Only)

1. Additional Parking w/ Drop-Off
2. Meadow - No Mow Zone
3. Shade Sail
4. Vegetated Bioswale
5. Play Berm
6. Restroom
7. Play Area  
(Trike Track, Nature Play, Splash Pad)
8. Little League Field
9. Dog Park Updates  
(Re-mulch area, Agility course,  
Shade Sail, Water spout)
10. Upgrade traffic calming devices recommended  
(Speed bump or traffic light)
11. Children's Pump Track
12. Open Lawn

0 40 80 120 160 feet  
1" = 40'





18  
Hole #2 off this sheet  
(see overall for proposed location)

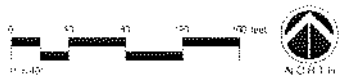
# Nani Falcone Park - South Enlargement

## Legend (Proposed Improvements Only)

- 13. Future Sport Courts Area
- 14. Disc Golf Putting Area
- 15. Disc Golf - Tee #1
- 16. Disc Golf - Hole #1
- 17. Disc Golf - Tee #2
- 18. Disc Golf - Hole #2
- 19. Looped Trail (.34 miles)
- 20. Covered Pavilion
- 21. Youth Soccer Field
- 22. Concrete Picnic tables at trail (3x)
- 23. Reforestation Edge of Park
- 24. Meadow - No Mow Zone (w/ gravel paths)
- 25. Pollinator Garden



Existing Trees  
Proposed Trees





# Nani Falcone Park

## Park Narrative (SB – presentation)

### Nani Falcone Park Narrative:

1. **Relocate** the disc golf parking/course to the southern section, in order to establish a designated area focused on various sports activities. This new layout will feature a pleasant wooded buffer edge and a walking loop for added convenience.
2. Expand the parking capacity in the northern region to accommodate more visitors, particularly families. This **revamped** space will cater to family-friendly needs, offering amenities for children, pets, and various recreational activities. Improvements will include an expanded kid's play area and upgraded restroom facilities.
3. Implement additional vibrant elements throughout the entire space to enhance its visual appeal and wayfinding experience. This strategy will require incorporating unique colors for the shade sails, covered pavilion, and site furniture to establish a **unifying** and memorable branding concept.
4. As part of our strategic park improvement plan, we propose to strategically place three pavilions throughout the park in order to create convenient and shaded areas for visitors seeking refuge. Our master plan involves building a new pavilion in the southern section, spanning across 9 acres of land, and utilizing the existing pavilions located in the middle and northern sections. By doing so, we aim to enhance the overall functionality of the park and provide optimal recreational spaces for our visitors.
5. Implement a reduced lawn mowing schedule throughout the park, promoting the growth of meadows and enhancing the **ecosystem services** provided by the park. This approach will foster a more natural environment while minimizing maintenance efforts.
6. Improve the overall **health & safety** of the park. We propose achieving this goal by implementing wildlife-friendly lighting along the trails and parking lots, ensuring ample shaded refuge areas, installing drinking fountains, offering accessible parking and amenities, and carefully delineating buffers between active sports play areas and other facilities.

# Nani Falcone Park

## Precedent Imagery: Planting (SB – presentation)



Meadow Planting



Vegetated Bioswale



Pollinator Garden

# Nani Falcone Park

## Precedent Imagery: Play (SB – presentation)



Trike Track

Splash Pad

Nature Playground



# Nani Falcone Park

## Precedent Imagery: Play (SB – presentation)



Children's Pump Track

Play Berms

Dog Agility Course

# Nani Falcone Park

## Precedent Imagery: Site Furniture (SB – presentation)



Picnic Tables



Shade Sails



Existing Site Furniture

# Nani Falcone Park

## Project Schedule

- **CONCEPTUAL PLAN:** September 2024 – December 2024
- **DESIGN:** January 2024 – June 2025
- **BIDDING:** August 2025 – July 2025
- **CONSTRUCTION:** Jan 2026 – December 2026



# Nani Falcone Park

## Questions and Comments

# QUESTIONS?

If you desire to be added to an e-mail list for project updates or future meeting announcements, please fill out the sign-in sheet.

---

# Sean Duncan

Landscape Architect – Project Manager

(210)207-2875

Sean.duncan@sanantonio.gov

**CONNECT WITH US!**    

**#SA2022Bond | [www.sanantonio.gov/2022Bond](http://www.sanantonio.gov/2022Bond)**