

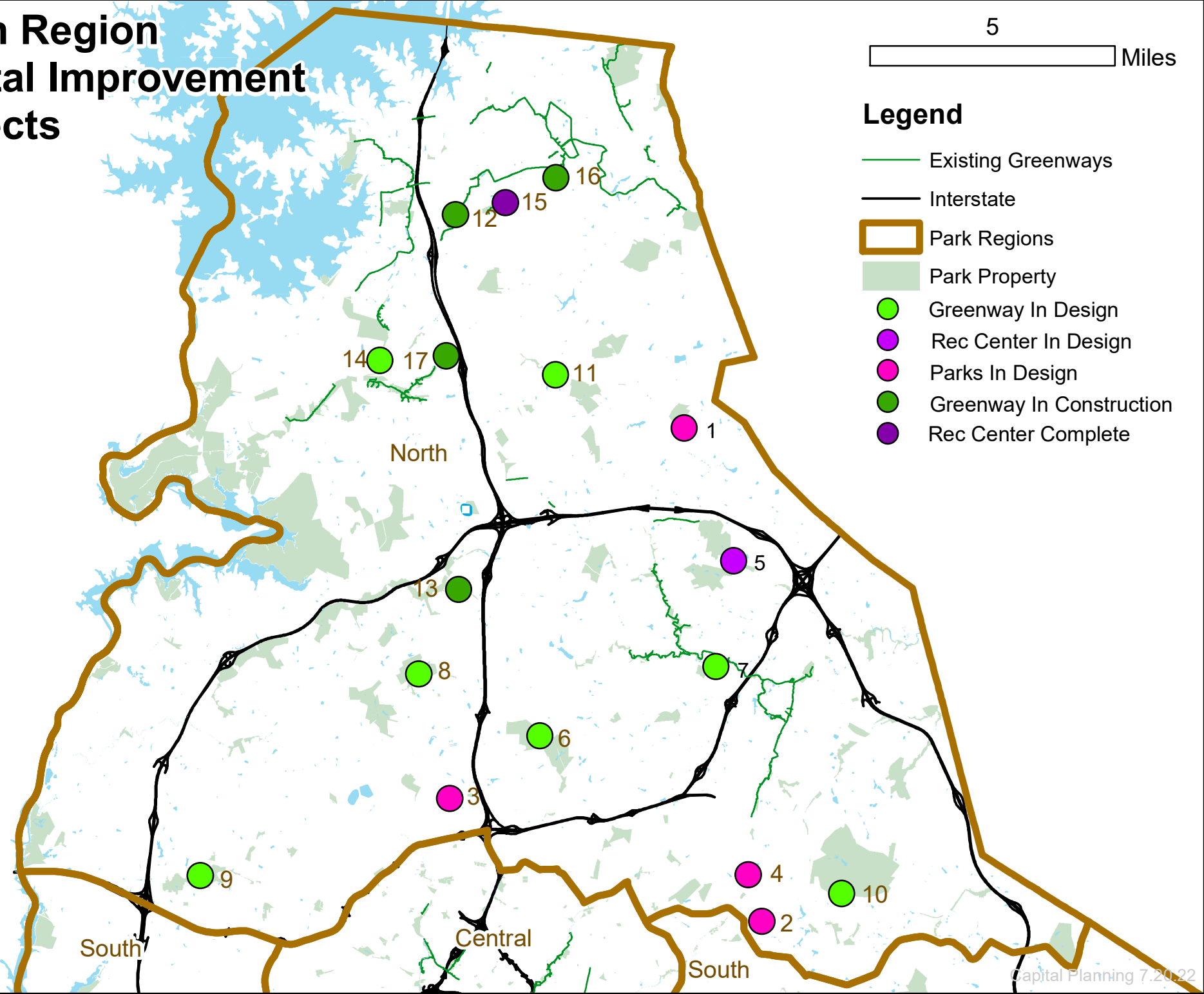
# North Region Capital Improvement Projects

5

Miles

## Legend

- Existing Greenways
- Interstate
- Park Regions
- Park Property
- Greenway In Design
- Rec Center In Design
- Parks In Design
- Greenway In Construction
- Rec Center Complete



Capital Project	Description	Acres / Miles	Phase	Status	More Information
1. Eastfield Regional Park	Master Planning, Design & Construction of Phase 1 of new regional park	114 Acres	Design	Master Planning	<a href="https://publicinput.com/Eastfield">https://publicinput.com/Eastfield</a>
2. Devonshire Park	Existing Park Renovation	1.7 Acre	Design	Design consultant contract coordination.	<a href="https://publicinput.com/Devonshire">https://publicinput.com/Devonshire</a>
3. Fred Alexander Park	Existing Park Renovation	6 Acres	Design	Design consultant contract coordination.	<a href="https://publicinput.com/FredAlexander">https://publicinput.com/FredAlexander</a>
4. Viewmont Park	Existing Park Renovation	11 Acres	Design	Design consultant contract coordination.	<a href="https://publicinput.com/Viewmont">https://publicinput.com/Viewmont</a>
5. Mallard Creek Recreation Center	Recreation Center Renovation	N/A	Design	Design consultant contract coordination.	<a href="https://www.mecknc.gov/ParkandRec/CapitalProjects/">https://www.mecknc.gov/ParkandRec/CapitalProjects/</a>
6. Irwin Creek Gwy	Old Statesville Road to Allen Hills Park	2.2 Miles	Design	Construction start projected for Spring 2023.	<a href="https://www.mecknc.gov/ParkandRec/CapitalProjects/">https://www.mecknc.gov/ParkandRec/CapitalProjects/</a>
7. Mallard Creek Gwy	Renovation of existing gwy from Mallard Creek Rd to David Taylor Dr.	N/A	Design	Design on-hold due to coordination with Charlotte Water project.	<a href="https://www.mecknc.gov/ParkandRec/CapitalProjects/">https://www.mecknc.gov/ParkandRec/CapitalProjects/</a>
8. McIntyre Creek Gwy	Beatties Ford Rd. to Clarencefield Dr.	.95 Miles	Design	Construction: Winter 2022 - Winter 2023	<a href="https://publicinput.com/McIntyre">https://publicinput.com/McIntyre</a>
9. Paw Creek Gwy	Little Rock Rd. to Loy Court	1.5 Miles	Design	Construction: Winter 2022 - Winter 2023	<a href="https://publicinput.com/PawCreek">https://publicinput.com/PawCreek</a>
10. Reedy Creek Gwy	Grier Rd. to Plaza Rd. Ext.	2.5 Miles	Design	Construction: Spring 2023 - Fall 2024	<a href="https://publicinput.com/ReedyCreekGreenway">https://publicinput.com/ReedyCreekGreenway</a>
11. South Prong Clarke Creek Gwy	N. Church St. to Asbury Chapel Rd.	3 Miles	Design	Design consultant contract coordination.	<a href="https://www.mecknc.gov/ParkandRec/CapitalProjects/">https://www.mecknc.gov/ParkandRec/CapitalProjects/</a>
12. Caldwell Station Creek Tributary Gwy	Northern Regional Rec Center to Exist. Caldwell Station Creek Gwy	0.83 miles	Construction	Construction: Summer 2022 - Summer 2023	<a href="https://www.mecknc.gov/ParkandRec/CapitalProjects/">https://www.mecknc.gov/ParkandRec/CapitalProjects/</a>
13. Long Creek Gwy	I-77 to I-485	3.5 Miles	Construction	Construction completion for phase 1 - Fall 2022; Phase 2 - early 2023.	<a href="https://publicinput.com/LongCreek">https://publicinput.com/LongCreek</a>
14. McDowell Creek Gwy	Ext. Torrence Creek Gwy to Ext. McDowell Creek Gwy	3.5 Miles	Construction	Construction start for phase 1b-Summer 2022 and and phase 2 – Winter 2022.	<a href="https://publicinput.com/McDowell">https://publicinput.com/McDowell</a>
15. Northern Regional Recreation Center	New Regional Recreation Center	41.39 Acres	Completed	Open to the Public June 2022	<a href="https://www.mecknc.gov/ParkandRec/CapitalProjects/">https://www.mecknc.gov/ParkandRec/CapitalProjects/</a>
16. Plum Creek Greenway Ext.	Bailey Rd. to Quiet Brook Ln.	.5 Miles	Completed	Construction completion Summer 2022.	<a href="https://www.mecknc.gov/ParkandRec/CapitalProjects/">https://www.mecknc.gov/ParkandRec/CapitalProjects/</a>
17. Torrence Creek Tributary #2 Gwy	CATS Park and Ride (Compass St.) to Rosewood Meadow Ln.	.88 Miles	Construction	Construction: Summer 2022 - Summer 2023	<a href="https://publicinput.com/TorrenceTrib2">https://publicinput.com/TorrenceTrib2</a>
18. Doby Creek & Trib Gwy Planning Study	Planning Study for future greenway from Mallard Creek to Nevin Rd.	6 Miles	Study	Planning Study Completed; No funding for development allocated.	<a href="https://publicinput.com/DobyCreekGreenwayStudy">https://publicinput.com/DobyCreekGreenwayStudy</a>
19. Back Creek Park Planning Study	Planning Study for new park at 12537 CALDWELL RD CHARLOTTE NC 28213	127 Acres	Study	Planning Study Completed; No funding for development allocated.	<a href="https://publicinput.com/BackCreekParkStudy">https://publicinput.com/BackCreekParkStudy</a>
20. Back Creek Gwy Planning Study	Planning Study for future greenway from Back Creek Park to Reedy Creek Park	7.5 Miles	Study	Planning Study Completed; No funding for development allocated.	<a href="https://publicinput.com/BackCreekGreenwayStudy">https://publicinput.com/BackCreekGreenwayStudy</a>