



# Village of Perry Transportation Safety and Access Study

*Genesee Transportation Council*

*PAC Meeting #3  
November 2021*

# Center Street Recommendations

## Capital Projects

- Northern Center Street Improvements
- Southern Center Street Improvements

## Services and Programs

- Education and Promotion
  - Share the Road
  - Pedestrian Crossings

## Policy and Planning

- Access Management
- Complete Streets Guidelines

# Capital Projects



# Capital Projects

## Northern Center Street Improvements

- Pedestrian Accommodations and Connectivity
- Traffic Calming
- Green Space with Drainage Improvements
- Access Management
- Gateway Feature

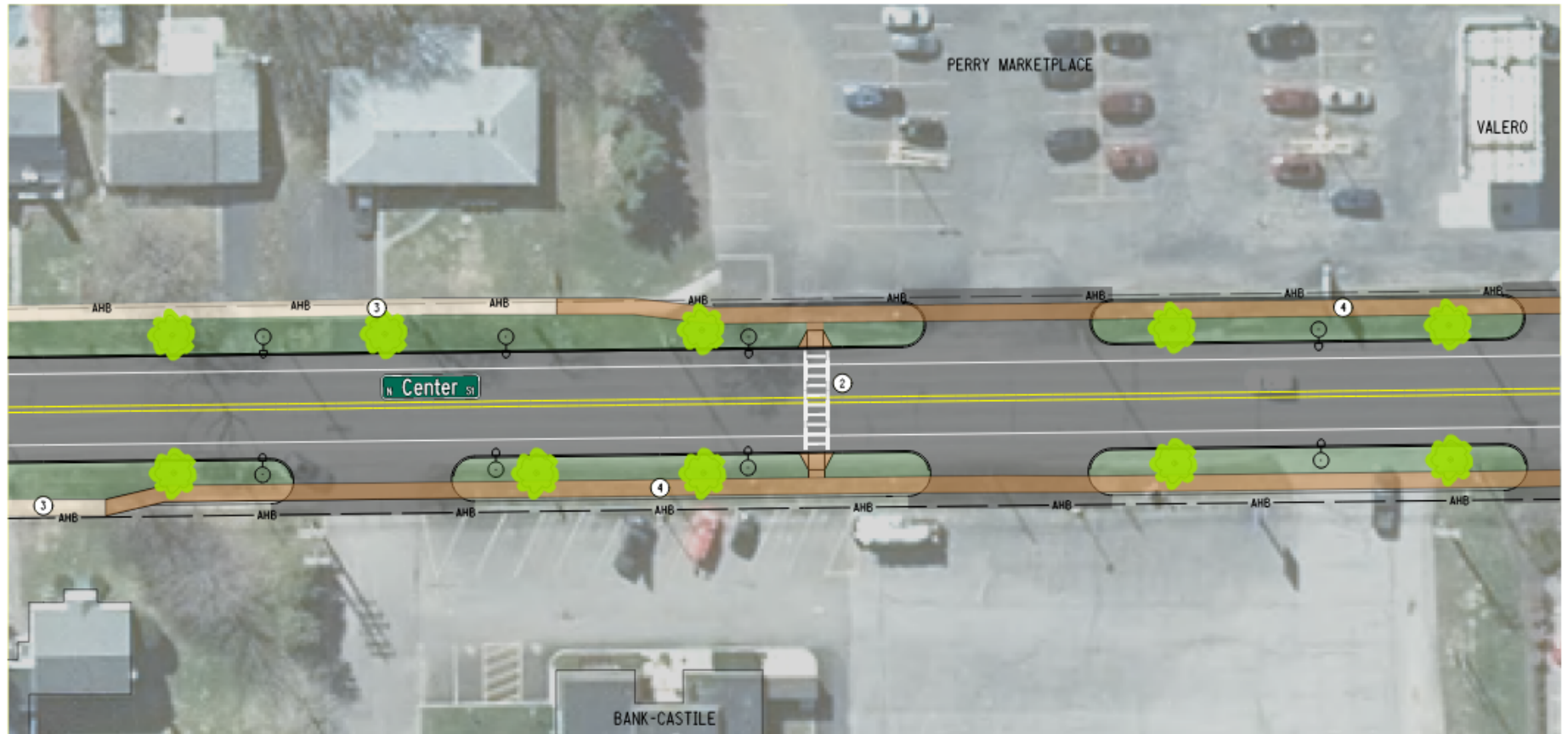
## Public Outreach Results (top 3 of importance)

- Pedestrian Facilities and Traffic Calming
- Vehicle Traffic Flow
- Consideration to Existing Drainage System



# Capital Projects

## Northern Center Street Improvements



- ① RESTRIPE CROSSWALK
- ② INSTALL NEW CROSSWALK
- ③ EXISTING SIDEWALK TO REMAIN
- ④ INSTALL NEW ADA COMPLIANT SIDEWALK

- LEGEND:
- EXISTING SIDEWALK
  - PROPOSED SIDEWALK
  - GRASS AREA



VILLAGE OF PERRY TRANSPORTATION SAFETY AND ACCESS STUDY  
NORTH CENTER STREET CONCEPT

**GTC**

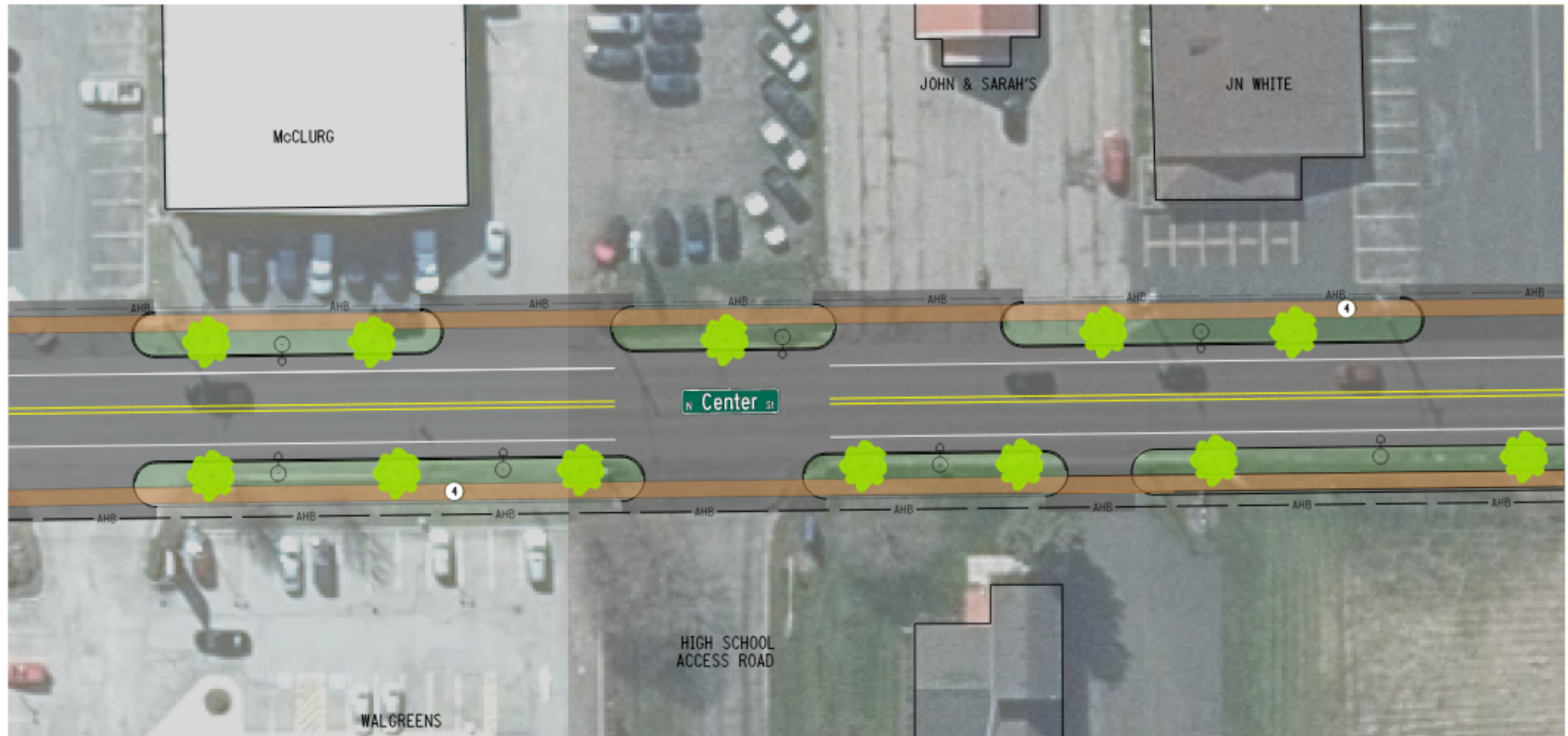
**EDR**  
a better environment

C&S Engineers, Inc.  
100 State Street, S.W. 170  
Rochester, New York 14614  
Phone 585-235-0040  
Fax 585-235-0088  
www.candse.com



# Capital Projects

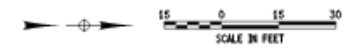
## Northern Center Street Improvements



- ① RESTRIPE CROSSWALK
- ② INSTALL NEW CROSSWALK
- ③ EXISTING SIDEWALK TO REMAIN
- ④ INSTALL NEW ADA COMPLIANT SIDEWALK

LEGEND:

	EXISTING SIDEWALK
	PROPOSED SIDEWALK
	GRASS AREA



VILLAGE OF PERRY TRANSPORTATION SAFETY AND ACCESS STUDY  
NORTH CENTER STREET CONCEPT



C&S Engineers, Inc.  
150 State Street, 5th Fl. 170  
Rocky Hill, New York 14874  
Phone: 585-335-6040  
Fax: 585-335-6888  
www.candse.com



# Capital Projects

## Northern Center Street Improvements



- ① RESTROPE CROSSWALK
- ② INSTALL NEW CROSSWALK
- ③ EXISTING SIDEWALK TO REMAIN
- ④ INSTALL NEW ADA COMPLIANT SIDEWALK

- LEGEND:**
- EXISTING SIDEWALK
  - PROPOSED SIDEWALK
  - GRASS AREA



VILLAGE OF PERRY TRANSPORTATION SAFETY AND ACCESS STUDY  
NORTH CENTER STREET CONCEPT

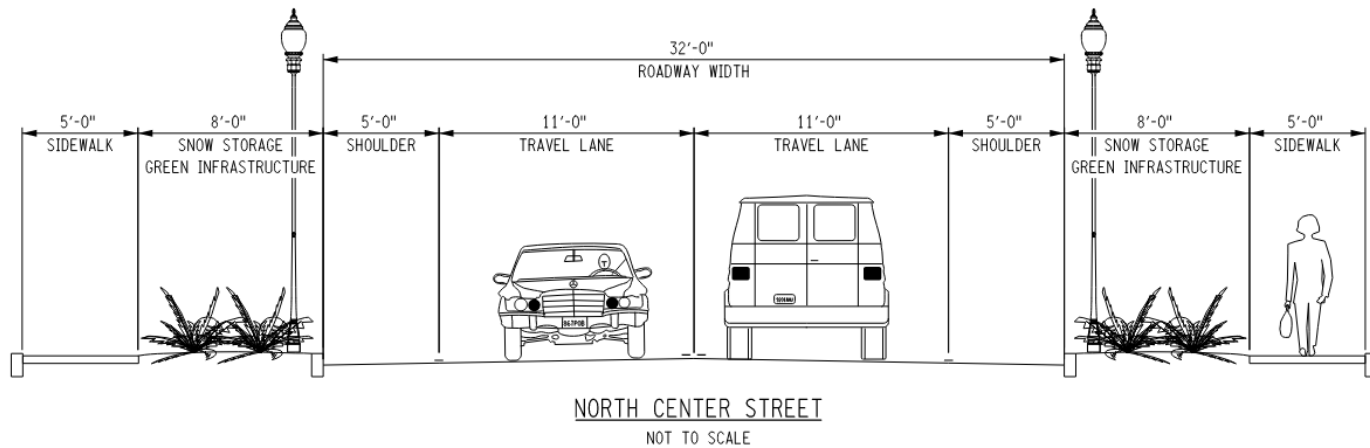
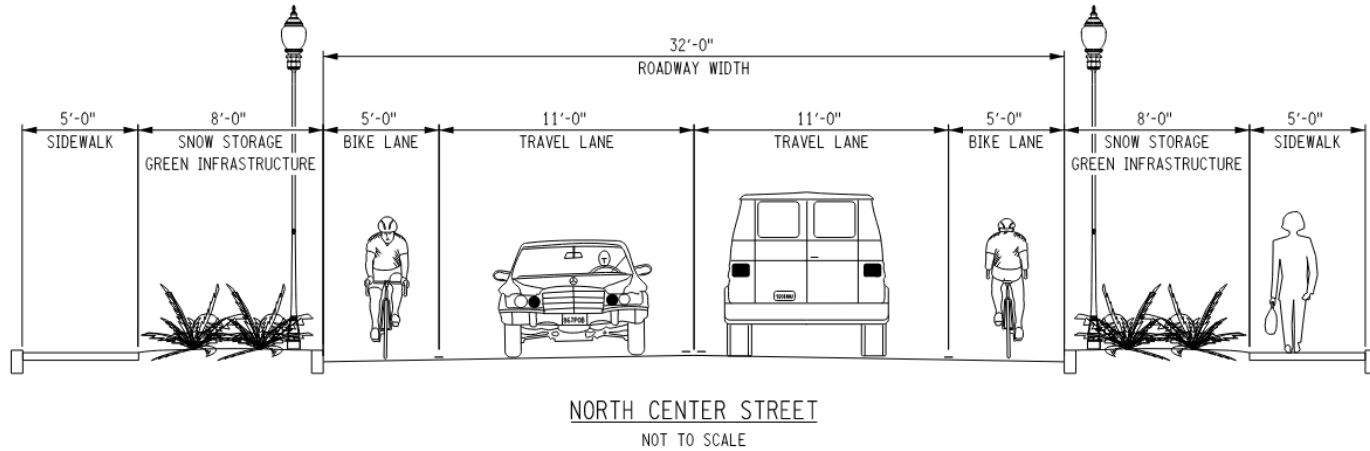


C&S Engineers, Inc.  
150 State Street, 5th Fl. 120  
Rochester, New York 14614  
Phone: 585.224.2440  
Fax: 585.681.1888  
www.ccsny.com



# Capital Projects

## Northern Center Street Roadway Space Allocation





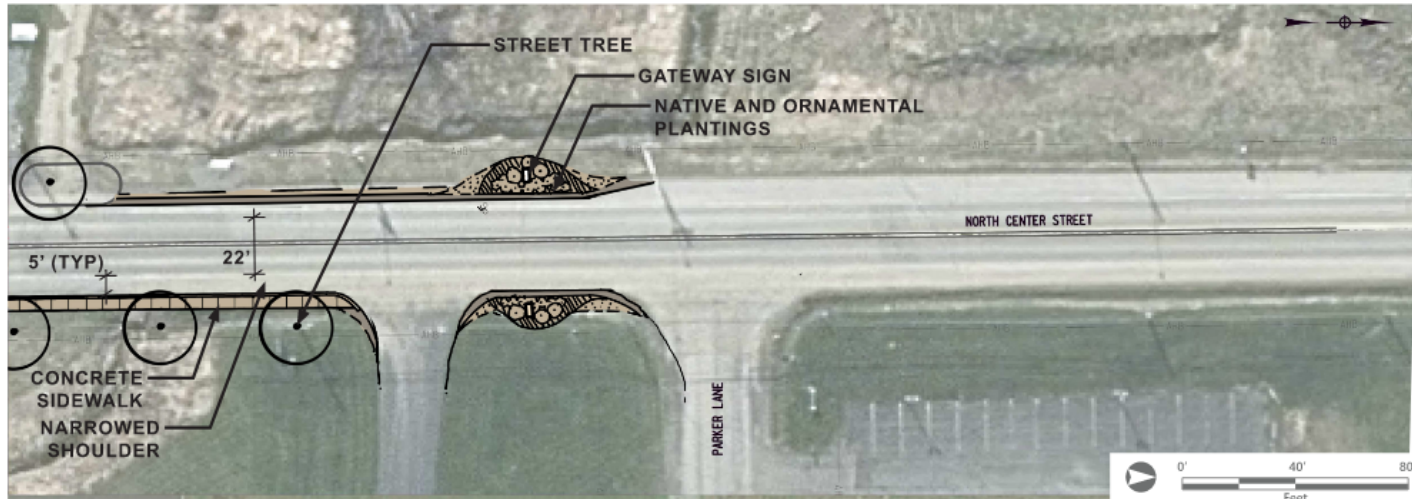
# Capital Projects

## Northern Center Street Improvements



# Capital Projects

## Gateway Treatment



North Center Street Plan Sketch



Silver Lake Trail Signage Concepts



Village of Perry Signage



North Center Street Photo Overlay

# Capital Projects

## Southern Center Street Improvements

- Trail Connectivity
- Sidewalk Connections
- Access Management

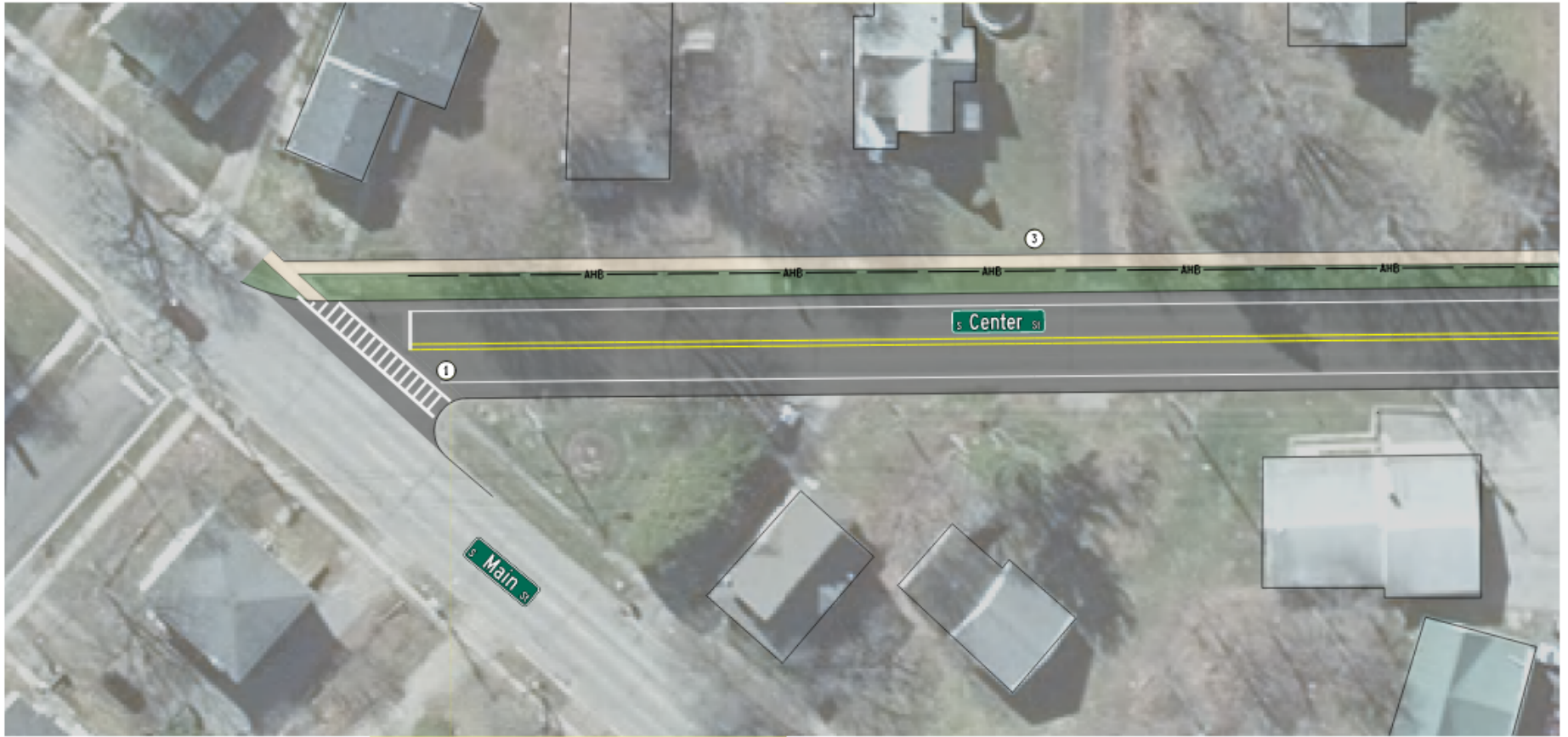
### Public Outreach Results

- Lighting/Safety
- Accessibility/Contiguous Sidewalk



# Capital Projects

## Southern Center Street Improvements



- ① RESTRIPE CROSSWALK
- ② INSTALL NEW CROSSWALK
- ③ EXISTING SIDEWALK TO REMAIN
- ④ INSTALL NEW ADA COMPLIANT SIDEWALK
- ⑤ SILVER LAKE OUTLET OVERLOOK

- LEGEND:
- EXISTING SIDEWALK
  - PROPOSED SIDEWALK
  - GRASS AREA



VILLAGE OF PERRY TRANSPORTATION SAFETY AND ACCESS STUDY  
NORTH CENTER STREET CONCEPT



C&S Engineers, Inc.  
150 State Street, Suite 120  
Rochester, New York 14614  
Phone: 585.226.0400  
Fax: 585.226.1888  
www.candse.com



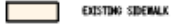


# Capital Projects

## Southern Center Street Improvements



- ① RESTRIPE CROSSWALK
- ② INSTALL NEW CROSSWALK
- ③ EXISTING SIDEWALK TO REMAIN
- ④ INSTALL NEW ADA COMPLIANT SIDEWALK
- ⑤ SILVER LAKE OUTLET OVERLOOK

**LEGEND:**

	EXISTING SIDEWALK
	PROPOSED SIDEWALK
	GRASS AREA



VILLAGE OF PERRY TRANSPORTATION SAFETY AND ACCESS STUDY  
NORTH CENTER STREET CONCEPT

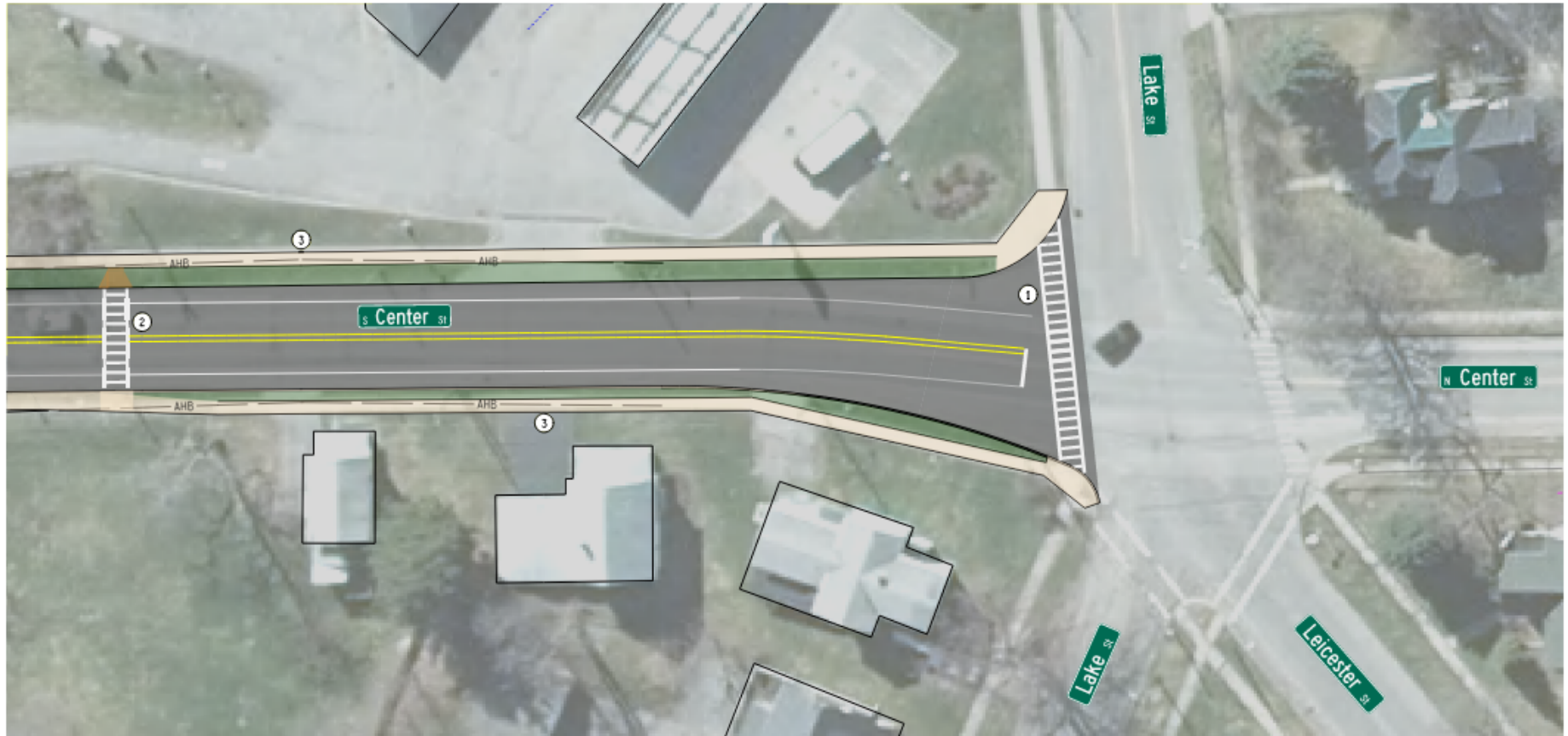


C&S Engineers, Inc.  
150 State Street, Suite 120  
Rochester, New York 14614  
Phone: 585.235.0440  
Fax: 585.235.1588  
www.candse.com



# Capital Projects

## Southern Center Street Improvements



- ① RESTRIPE CROSSWALK
- ② INSTALL NEW CROSSWALK
- ③ EXISTING SIDEWALK TO REMAIN
- ④ INSTALL NEW ADA COMPLIANT SIDEWALK
- ⑤ SILVER LAKE OUTLET OVERLOOK

- LEGEND:
- EXISTING SIDEWALK
  - PROPOSED SIDEWALK
  - GRASS AREA



VILLAGE OF PERRY TRANSPORTATION SAFETY AND ACCESS STUDY  
NORTH CENTER STREET CONCEPT



C&S Engineers, Inc.  
150 State Street, 8th Fl 170  
Rockledge, New York 14674  
Phone: 585-325-0040  
Fax: 585-325-0088  
www.candson.com



# Capital Projects

## Southern Center Street Improvements



- 1 RESTROPE CROSSWALK
- 2 INSTALL NEW CROSSWALK
- 3 EXISTING SIDEWALK TO REMAIN
- 4 INSTALL NEW ADA COMPLIANT SIDEWALK
- 5 SILVER LAKE OUTLET OVERLOOK

LEGEND:

-  EXISTING SIDEWALK
-  PROPOSED SIDEWALK
-  GRASS AREA



VILLAGE OF PERRY TRANSPORTATION SAFETY AND ACCESS STUDY  
NORTH CENTER STREET CONCEPT

**GTC**

**EDR**  
a better environment

C&S Engineers, Inc.  
150 State Street, Suite 120  
Rochester, New York 14614  
Phone: 585-232-0440  
Fax: 585-232-1888  
www.candse.com

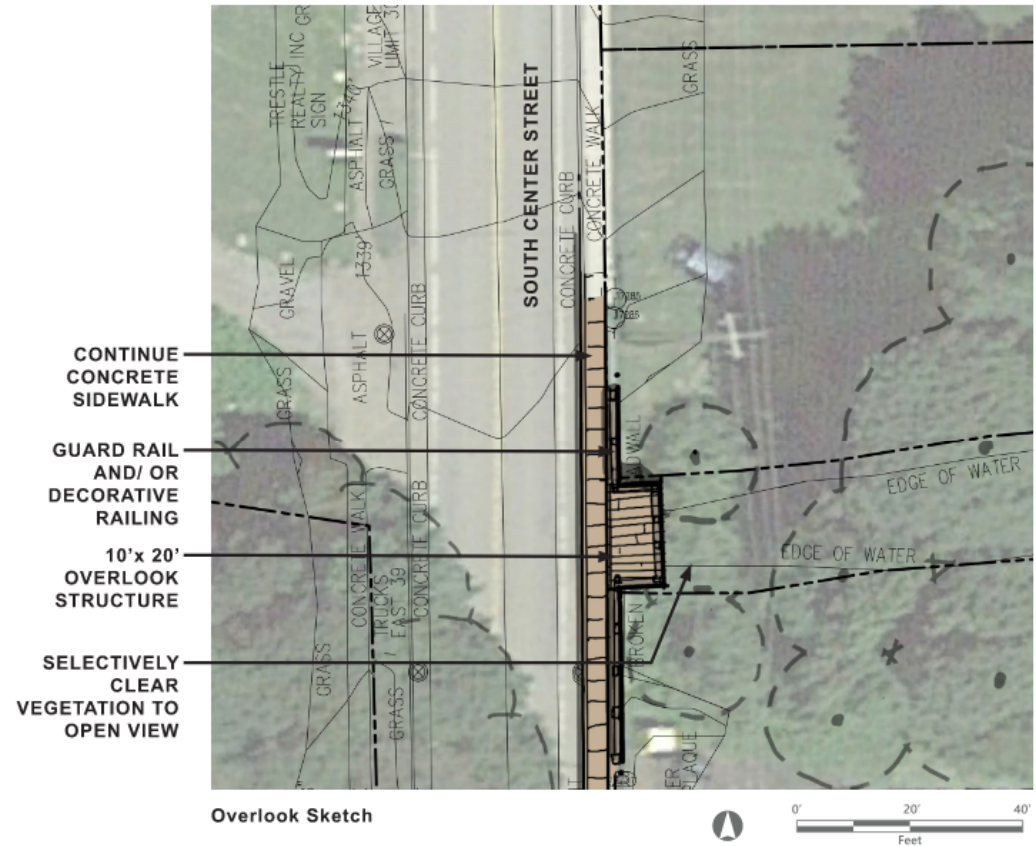


# Capital Projects

## Southern Center Street Improvements



**Key Map**  
n.t.s.



**Overlook Sketch**



# Capital Projects

## Funding Strategy

### Northern Center Street Improvements

- [NYS DOT STIP](#)
  - Pavement Rehabilitation
- [TAP - Transportation Alternative Program](#)
  - Sidewalks
  - Pedestrian Lighting
  - Landscaping/Green Infrastructure
  - Placemaking (Signage)
  - Gateway Treatment

### Southern Center Street Improvements

- [Community Development](#)
  - Sidewalks
- [Ralph Wilson Foundation](#)
  - Trail Connections
  - Scenic Overlook
  - Lighting



NEW YORK STATE DEPARTMENT OF TRANSPORTATION  
TRANSPORTATION ALTERNATIVES PROGRAM  
CONGESTION MITIGATION AND AIR QUALITY IMPROVEMENT PROGRAM  
NOTICE OF FUNDING AVAILABILITY



# Capital Projects

## Center Street Challenges



Short Term Solution:  
Install crosswalks and pedestrian signage at Pine Street and Cherry Street so people can go around this location.

Long Term Solution:  
Acquire ROW and install new retaining wall further away providing wider sidewalks and snow storage.

# Capital Projects

## Center Street Challenges



### Long Term Solutions:

- Replace retaining wall and barrier on top with a decorative wall and aesthetically pleasing barrier
- Lower the road through reconstruction and balance grade differences. Relocate the sidewalk to street level with low retaining wall, hand rail, and ramps to residences.

# Capital Projects

## Center Street Challenges



### Long Term Solutions:

- Remove abutment and build sidewalk at street level
- Install a retaining wall at back of sidewalk if needed

# Capital Projects

## Center Street Challenges



### Long Term Solutions:

- All require ROW
- Two may be historic properties
- All have significant costs, may be a capital project in themselves

# Services and Programs



# Services and Programs

## Services and Programs

- Education and Promotion

- Share the Road
- Pedestrian Crossings

- Leverage the NYS MPO Safety Program that provide information on education campaigns for safety.

- Coordinate programs and projects that address road user behavior, vulnerable road users and older and younger drivers.

- Provide driver education materials to help drivers understand new transportation infrastructure.

# Policy and Planning





# Policy and Planning

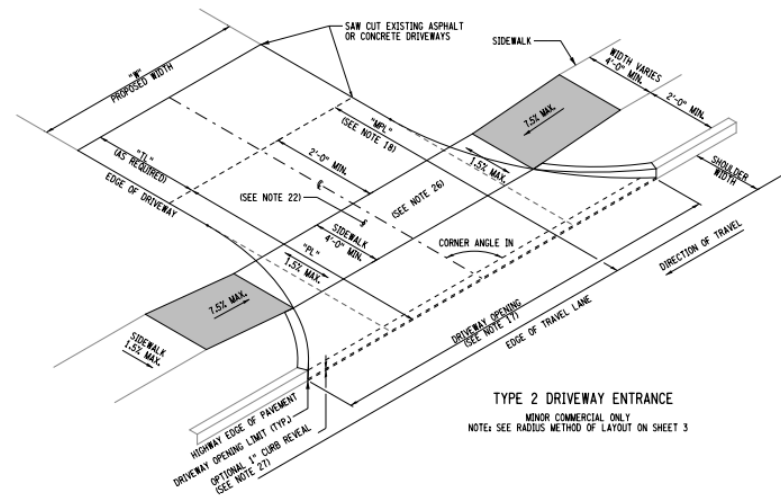
## Access Management Policy

- A Part of the Site Plan Approval Process when Applying for a building permit, zoning permit, subdivision review, site plan or special permit

- Managing and Planning the Spacing and Design of Driveways
- Reduces congestion and crashes, improves safety for pedestrians and bicyclists, more aesthetically pleasing

- Access Management Local Law

- Incorporate design standards and requirements on all roads within Village limits.
- Based on functional classification of the road



# Policy and Planning

## Complete Streets Policy

A complete streets policy is designed to create a resilient, equitable, and efficient transportation system. It will create a modal hierarchy in the public right of way.

### - Walkability

- Identify a Pedestrian Priority Network, and focus pedestrian improvements along this network
- Prioritize visibility and safety of pedestrians
- Include sidewalk in the site plan approval process
- Improve street lighting

### - Bicycling

- Have an all ages and ability bicycle network
- Build bikeway connections

### - Stormwater Management

- Strategies to reduce impervious area
- Incorporate stormwater quality practices into projects to improve water quantity and quality



# Next Steps

## Public Information Meeting #2 – Open House Format

Wednesday December 8, 4PM - 7PM

Breeze Way Barn

## PAC #4 – PIM Results and Final Plan

Week of January 10<sup>th</sup>

## Final Report

End of January