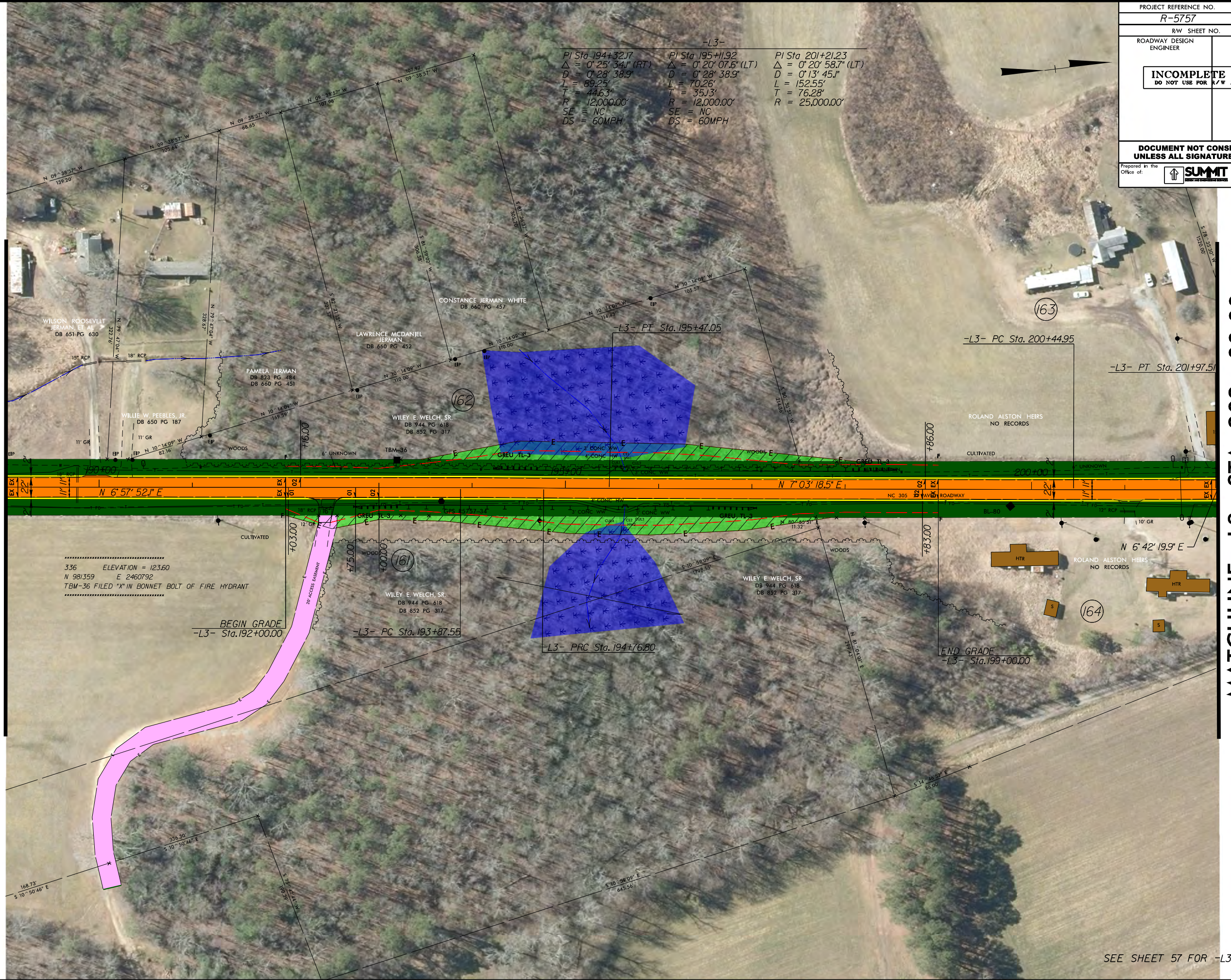


8/17/99

REVISIONS

8/9/99 SYSTEMS
R-5757-35 PHM.dgn
SPENCER

MATCHLINE -L3- STA 189 + 00.00



-L3-
 PI Sta 194+32.17 PI Sta 195+11.92 PI Sta 201+21.23
 $\Delta = 0^\circ 25' 34.1''$ (RT) $\Delta = 0^\circ 20' 07.6''$ (LT) $\Delta = 0^\circ 20' 58.7''$ (LT)
 $D = 0' 28' 38.9''$ $D = 0' 28' 38.9''$ $D = 0' 13' 45.1''$
 $L = 89.25'$ $L = 70.26'$ $L = 152.55'$
 $T = 44.63'$ $T = 35.13'$ $T = 76.28'$
 $R = 12,000.00'$ $R = 12,000.00'$ $R = 25,000.00'$
 $SE = NC$ $SE = NC$
 $DS = 60MPH$ $DS = 60MPH$

PROJECT REFERENCE NO. R-5757	SHEET NO. 35
RW SHEET NO.	
ROADWAY DESIGN ENGINEER	HYDRAULICS ENGINEER
INCOMPLETE PLANS DO NOT USE FOR R/W ACQUISITION	
DOCUMENT NOT CONSIDERED FINAL UNLESS ALL SIGNATURES COMPLETED	
Prepared in the Office of: SUMMIT	NC FIRM LICENSE No. P-0339 504 Meadows Drive Hillsborough, NC 27278 (919) 732-3883 (919) 732-6676 (FAX)

336 ELEVATION = 123.60
 N 981359 E 2460792
 TBM-36 FILED 'X' IN BONNET BOLT OF FIRE HYDRANT

BEGIN GRADE
 -L3- Sta. 192+00.00

-L3- PC Sta. 193+87.55

-L3- PRC Sta. 194+76.80

END GRADE
 -L3- Sta. 199+00.00

SEE SHEET 57 FOR -L3-3- PROFILE

MATCHLINE -L3- STA 202 + 00.00