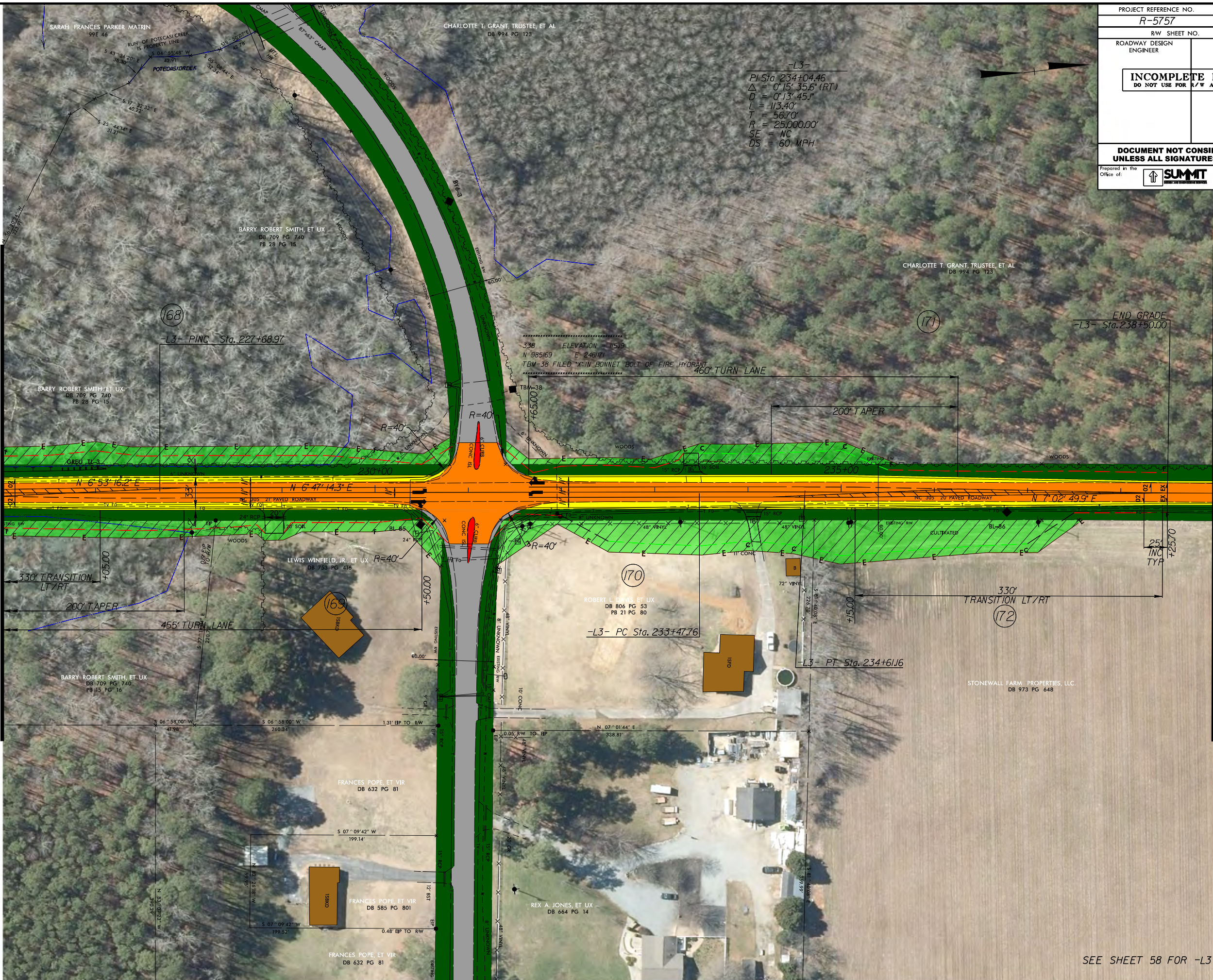


| | |
|---|---|
| PROJECT REFERENCE NO. | SHEET NO. |
| R-5757 | 37 |
| RW SHEET NO. | |
| ROADWAY DESIGN ENGINEER | HYDRAULICS ENGINEER |
| INCOMPLETE PLANS DO NOT USE FOR A/W ACQUISITION | |
| DOCUMENT NOT CONSIDERED FINAL UNLESS ALL SIGNATURES COMPLETED | |
| Prepared in the Office of: | NC FIRM LICENSE No. P-0339 504 Meadows Drive Hillsborough, NC 27278 (919) 732-3883 (919) 732-6676 (FAX) |

-L3-
 PI Sta. 234+04.46
 $\Delta = 0^{\circ}15'35.6"$ (RT)
 $D = 0^{\circ}13'45.1"$
 $L = 113.40'$
 $T = 56.70'$
 $R = 25,000.00'$
 $SE = NC$
 $DS = 60 \text{ MPH}$

MATCHLINE -L1- STA 226+00.00
(SEE SHEET 36)

MATCHLINE -L3- STA 239+00.00



SEE SHEET 58 FOR -L3-4- PROFILE

REVISIONS

R-5757-37-37.PHM.dgn
 11/15/2017 10:37 AM
 R-5757-37-37.PHM.dgn