


PROJECT REFERENCE NO.	SHEET NO.
R-5757	10
RW SHEET NO.	
ROADWAY DESIGN ENGINEER	HYDRAULICS ENGINEER
INCOMPLETE PLANS DO NOT USE FOR R/W ACQUISITION	
DOCUMENT NOT CONSIDERED FINAL UNLESS ALL SIGNATURES COMPLETED	
Prepared in the Office of:	 <small>NC FIRM LICENSE No. P-0339 504 Woodwinds Drive Hillsborough, NC 27278 (919) 732-3883 (919) 732-6676 (FAX)</small>

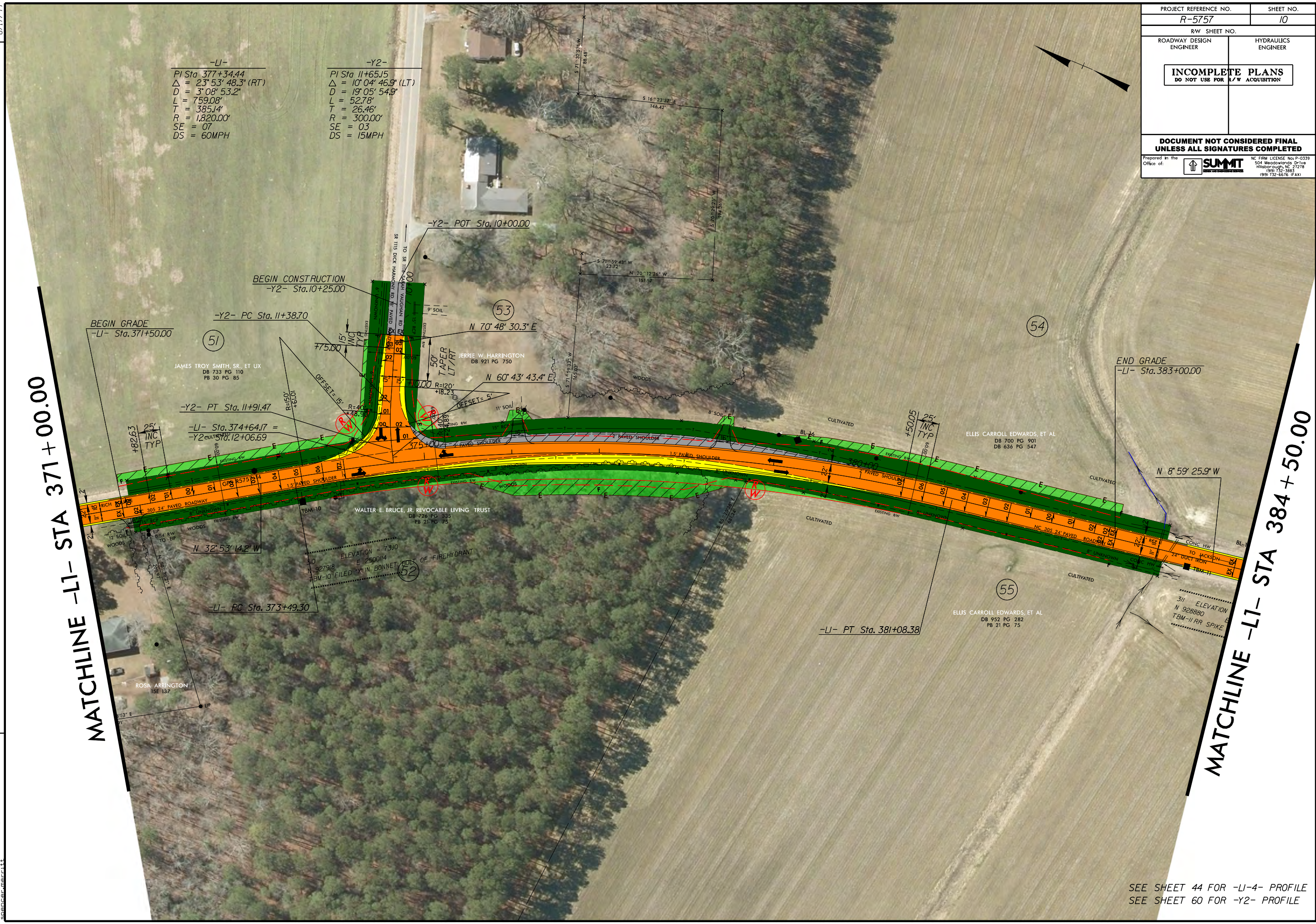
8.17/99

-LI-
 PI Sta 377+34.44
 $\Delta = 23^{\circ} 53' 48.3''$ (RT)
 $D = 3^{\circ} 08' 53.2''$
 $L = 759.08'$
 $T = 385.14'$
 $R = 1,820.00'$
 $SE = 07$
 $DS = 60MPH$

-Y2-
 PI Sta 11+65.15
 $\Delta = 10^{\circ} 04' 46.9''$ (LT)
 $D = 19^{\circ} 05' 54.9''$
 $L = 52.78'$
 $T = 26.46'$
 $R = 300.00'$
 $SE = 03$
 $DS = 15MPH$

MATCHLINE -LI- STA 371+00.00

MATCHLINE -LI- STA 384+50.00



REVISIONS

SEE SHEET 44 FOR -LI-4- PROFILE
 SEE SHEET 60 FOR -Y2- PROFILE