

# Crozet Master Plan

## Proposed Land Use Changes

A Future Land Use designation specifies the intended future use of a property. While this designation may not be the way the property is currently used or developed, it aligns with the vision outlined in a long-range planning document.

Each Future Land Use category or designation describes the recommendations for future uses (such as office, residential, commercial and mixed-use) and building forms (such as height and block size). These designations inform decisions on future policy changes like rezonings and special use permits, but the current zoning of the property dictates what can happen on it, "by-right" - today.

# Potential changes are shown by this circle. A summary of the proposed change and rationale can be found in the document titled "Summary of Proposed Land Use Changes" by referencing the number shown in the circle.

**Points of Interest**

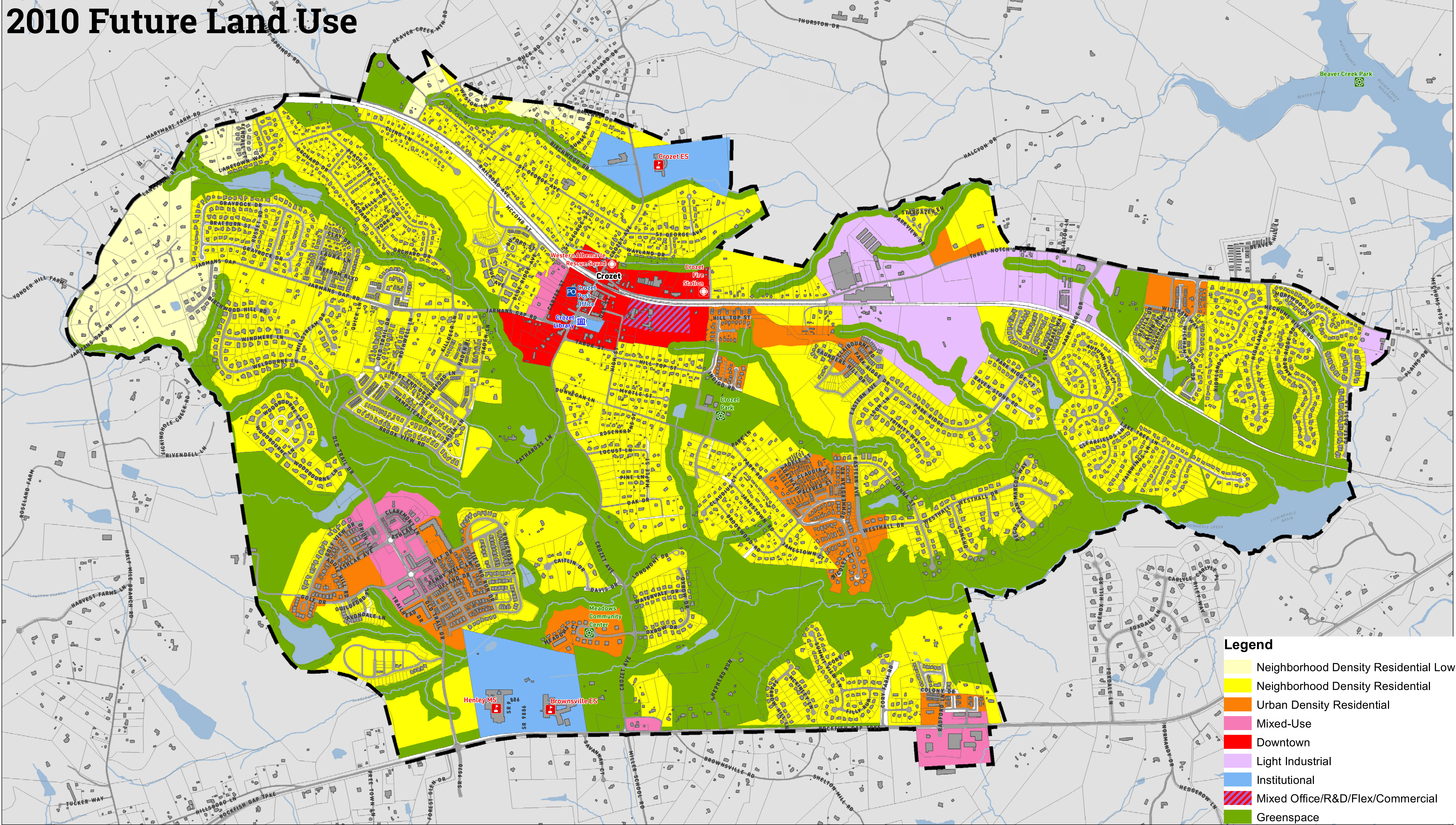
- FIRE/RESCUE STATION
- LIBRARY
- POST OFFICE
- RECREATION/TOURISM
- SCHOOL

**Legend**

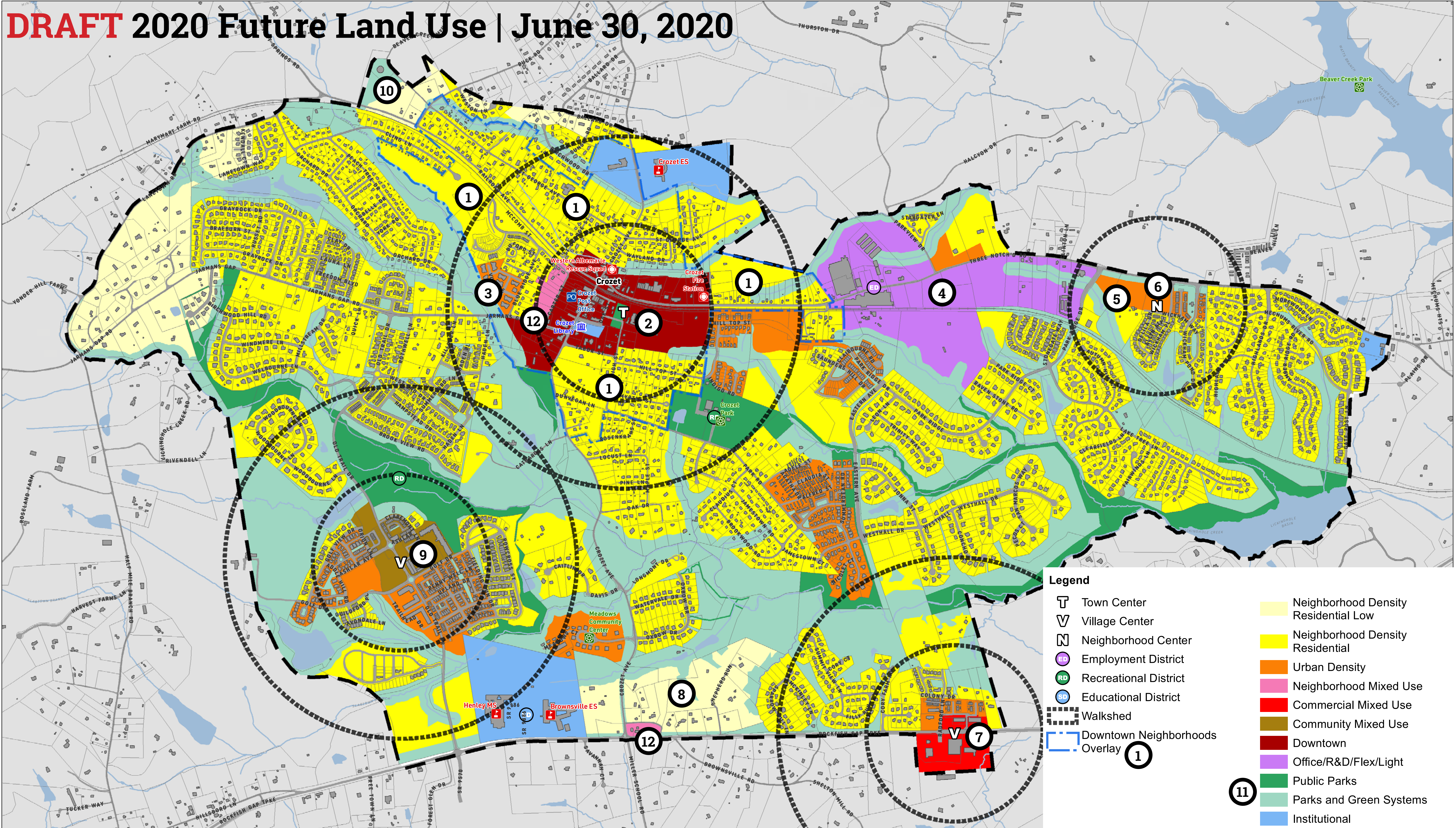
- Roads
- Railroads
- Buildings
- Water Features

0 0.5 1 Kilometers  
0 0.25 0.5 1 Miles

### 2010 Future Land Use



### DRAFT 2020 Future Land Use | June 30, 2020



Prepared by Albemarle County, Andrew Knuppel, 6/30/2020. The map elements depicted are graphic representations and are not to be construed or used as legal description. This map is for display purposes only.  
 \\ch-planning\Maping\GIS\SRV\NeighborhoodPlanning\Crozet Master Plan\CAD Workspaces\111 Comparisons 2020\0624.mxd