



Village of Perry Transportation Safety and Access Study

Genesee Transportation Council

*PAC Meeting #2
September 2021*

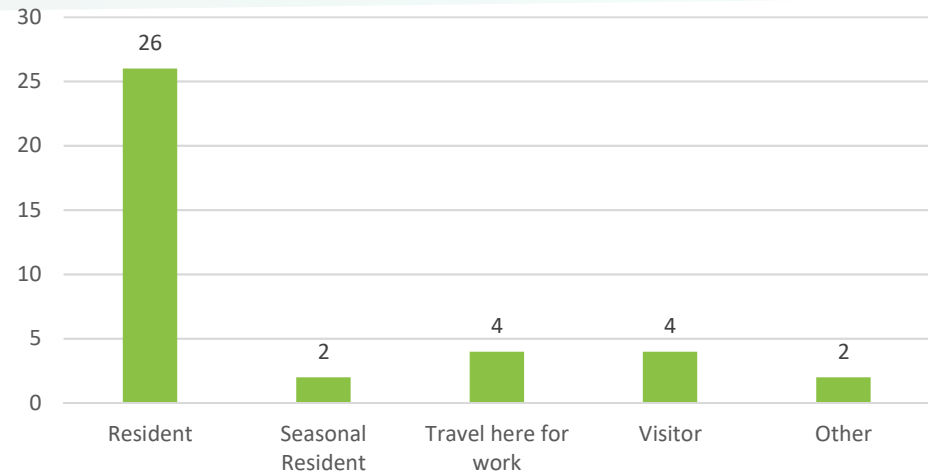
Public Participation



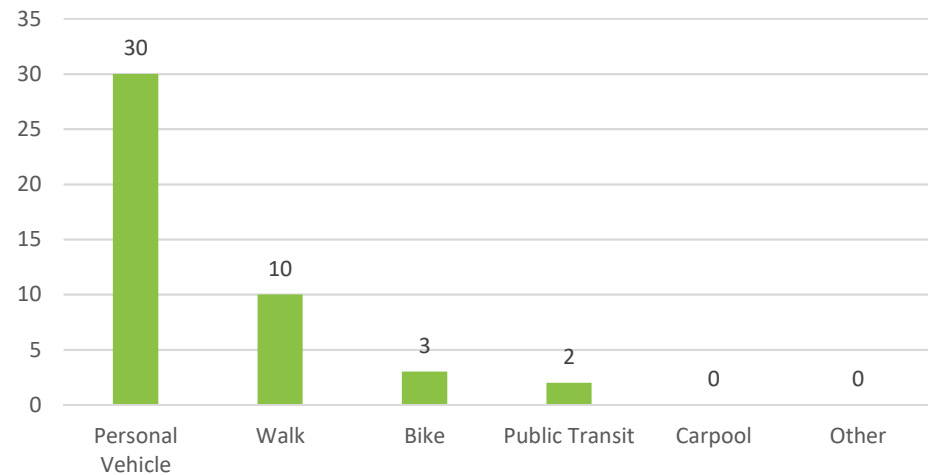
Online Survey Results

- 61 participants
- Majority residents (full time and seasonal)
- Primary mode of transportation within the Village was a personal vehicle

Connection with Project Area



Primary Mode of Transportation



Online Survey Results

Have you considered walking or biking?

- Walking is difficult in some places
- Road is too busy
- Difficult as a senior / due to age
- Biking is tough due to crowded roadway
- Biked once and felt too unsafe to try again

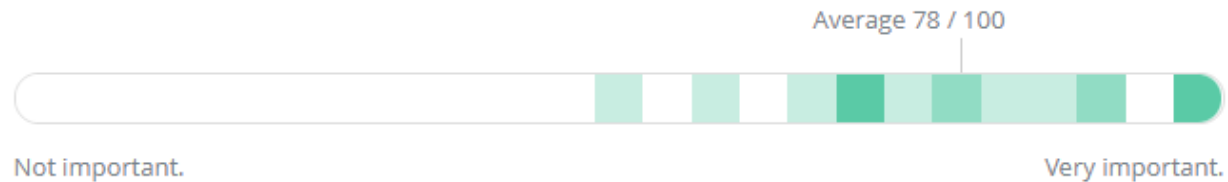
If you already walk or bicycle what is your experience like?

- Walking is difficult due to lack of sidewalks and sidewalk quality
- Lack of crosswalks
- Too close to traffic
- Need designated crossing areas
- Need defined entrances for businesses
- Center Street feels auto oriented

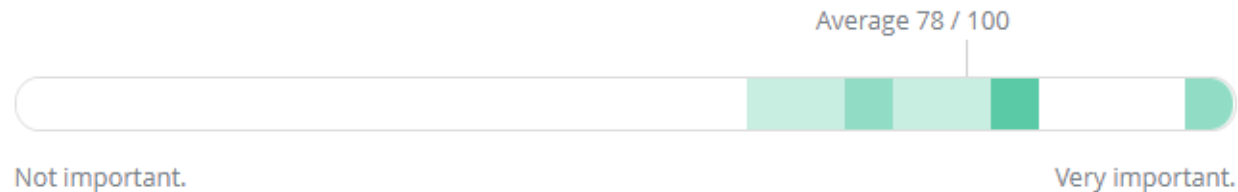
Online Survey Results

- Highest areas for improvement averages:

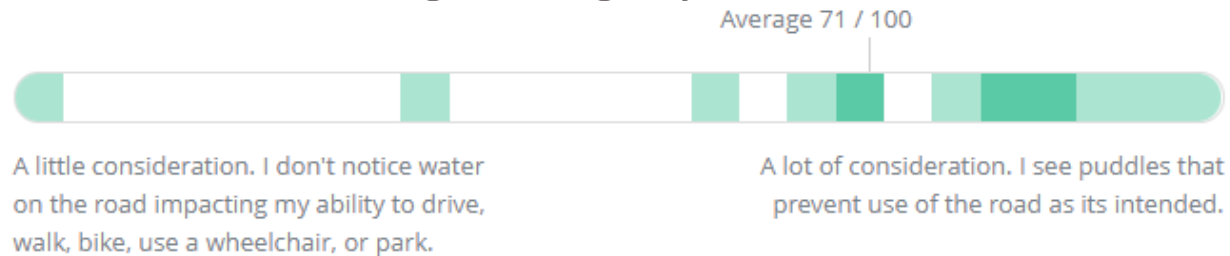
Pedestrian facilities/traffic calming



Vehicle/traffic flow



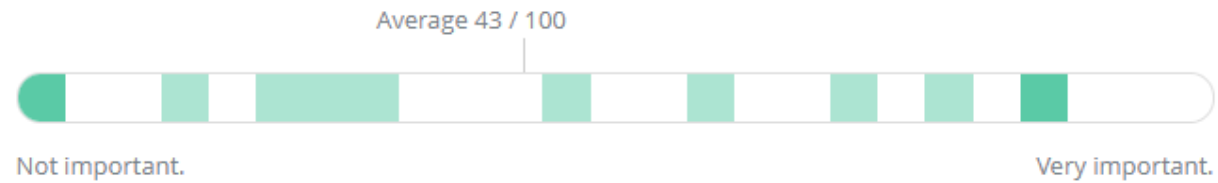
Consideration to the existing Drainage System



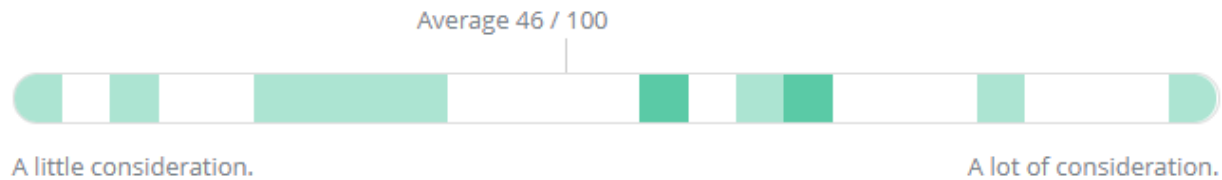
Online Survey Results

- Lowest areas for improvement averages:

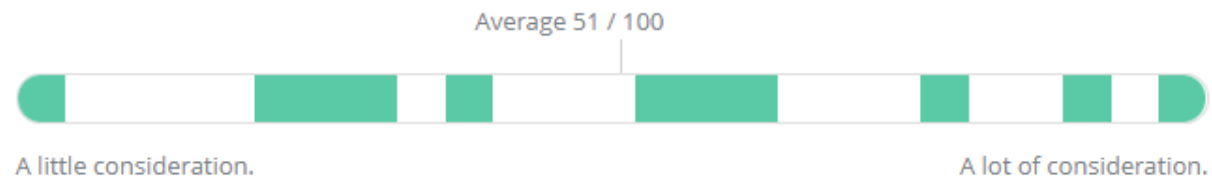
On-street parking



Appearance/streetscaping



Gateway Treatments/Signs



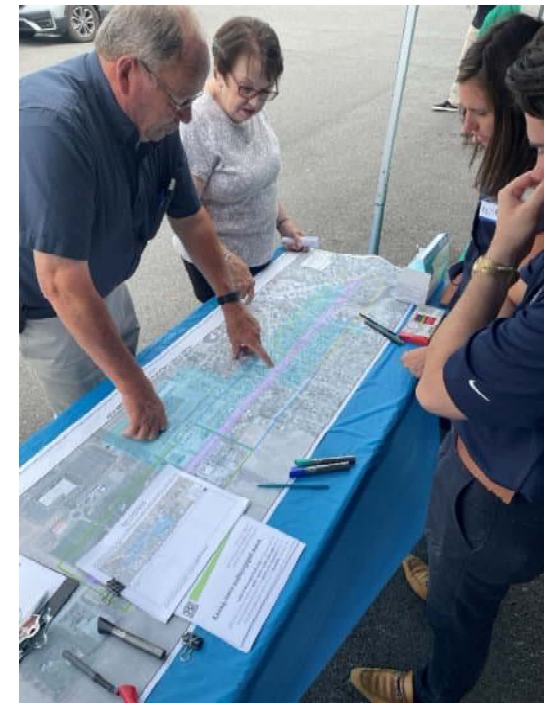
Online Survey Results

Vision for Center Street

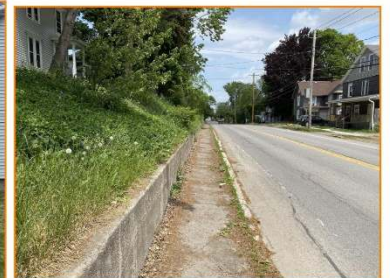
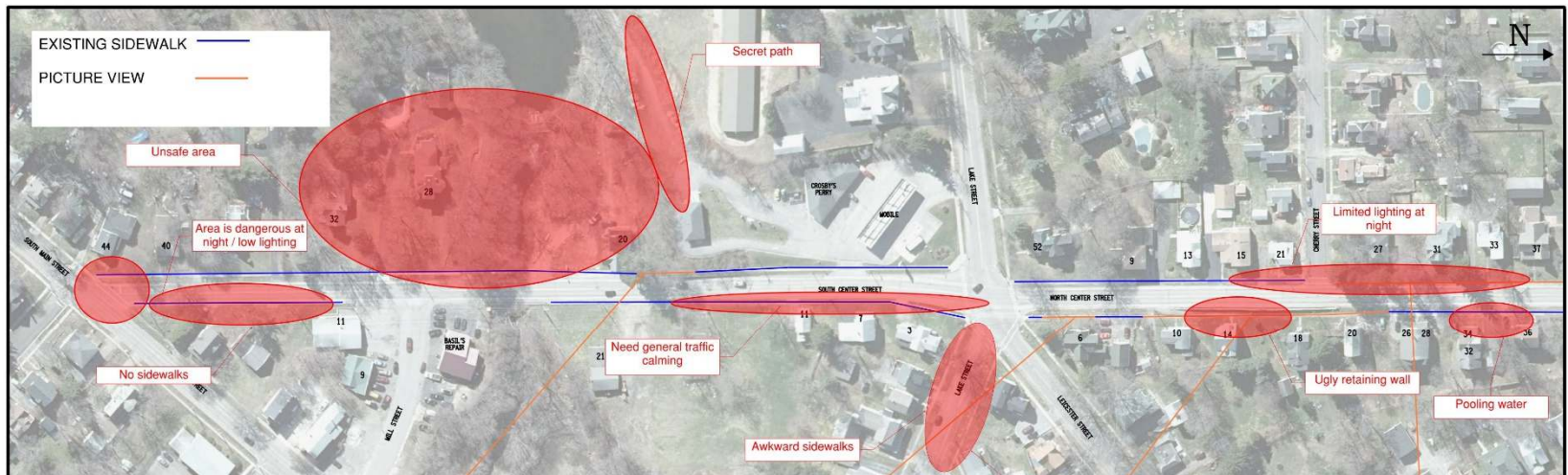
- "I would love to see Center Street become safe for walkers, bikers and drivers. I tend to avoid the businesses on this street because of the traffic."
- "A thriving rural commerce & residential street where businesses and residents move safely, comfortably & happily!"
- "Quiet, safe neighborhood"
- "Wish it could be wider and more user friendly."
- "More accessibility to pedestrians - better sidewalks"
- "Sidewalks and a traffic light"

Open House -

- August 12th, 2021 – Perry Marketplace. 3-6 PM
- Community members were able to point out problem areas on the project area map, place sticky notes in areas of concern, and fill out comment cards



Open House -



1-way issue. Drivers drive the wrong way often



VILLAGE OF PERRY TRANSPORTATION SAFETY AND ACCESS STUDY
SOUTHERN RESIDENTIAL SUB AREA

AUGUST 2021

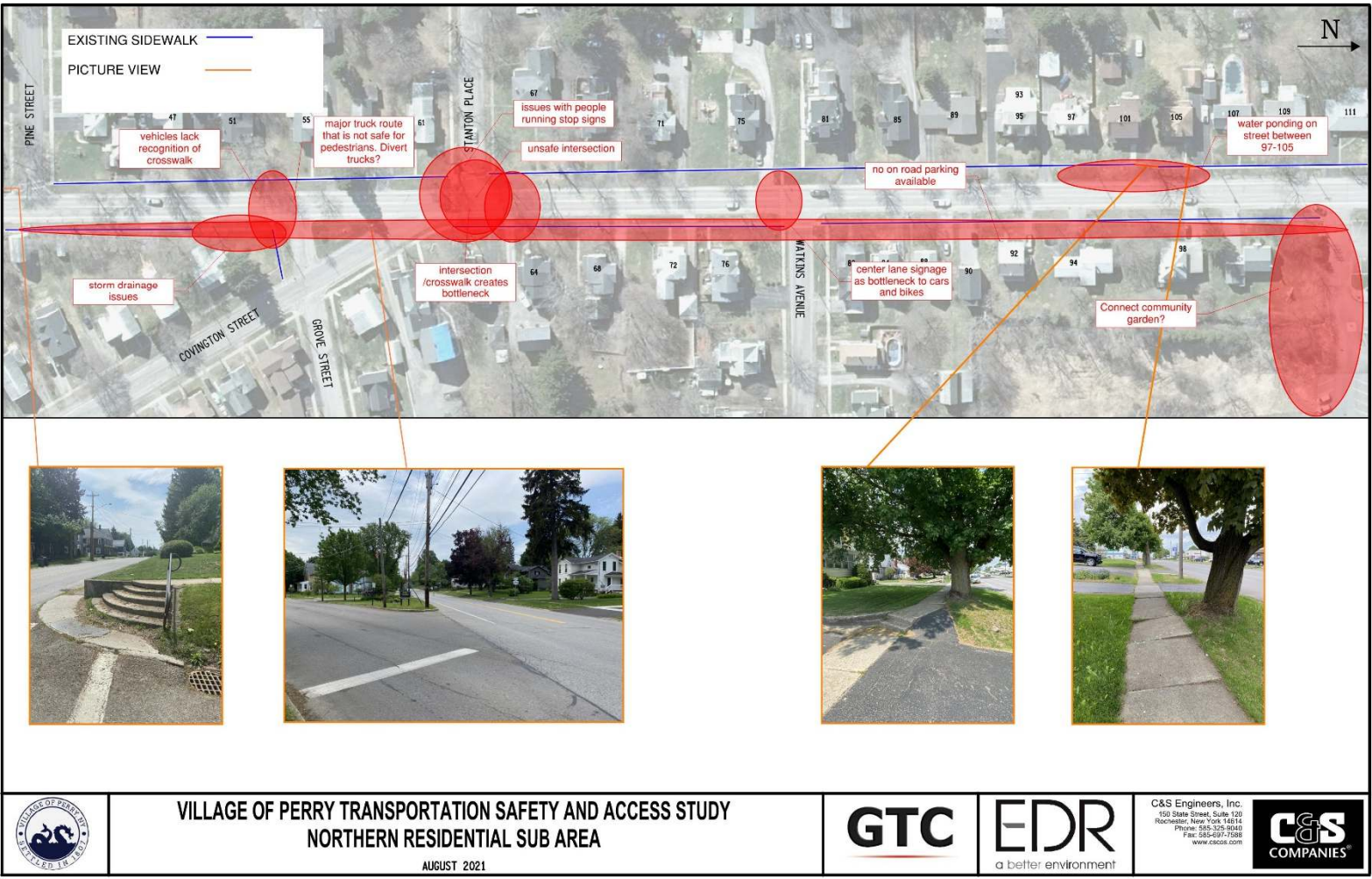
GTC

EDR
a better environment

C&S Engineers, Inc.
160 State Street, Suite 120
Rochester, New York 14614
Phone: 585-325-9040
Fax: 585-397-7989
www.cscos.com



Open House -



VILLAGE OF PERRY TRANSPORTATION SAFETY AND ACCESS STUDY
 NORTHERN RESIDENTIAL SUB AREA

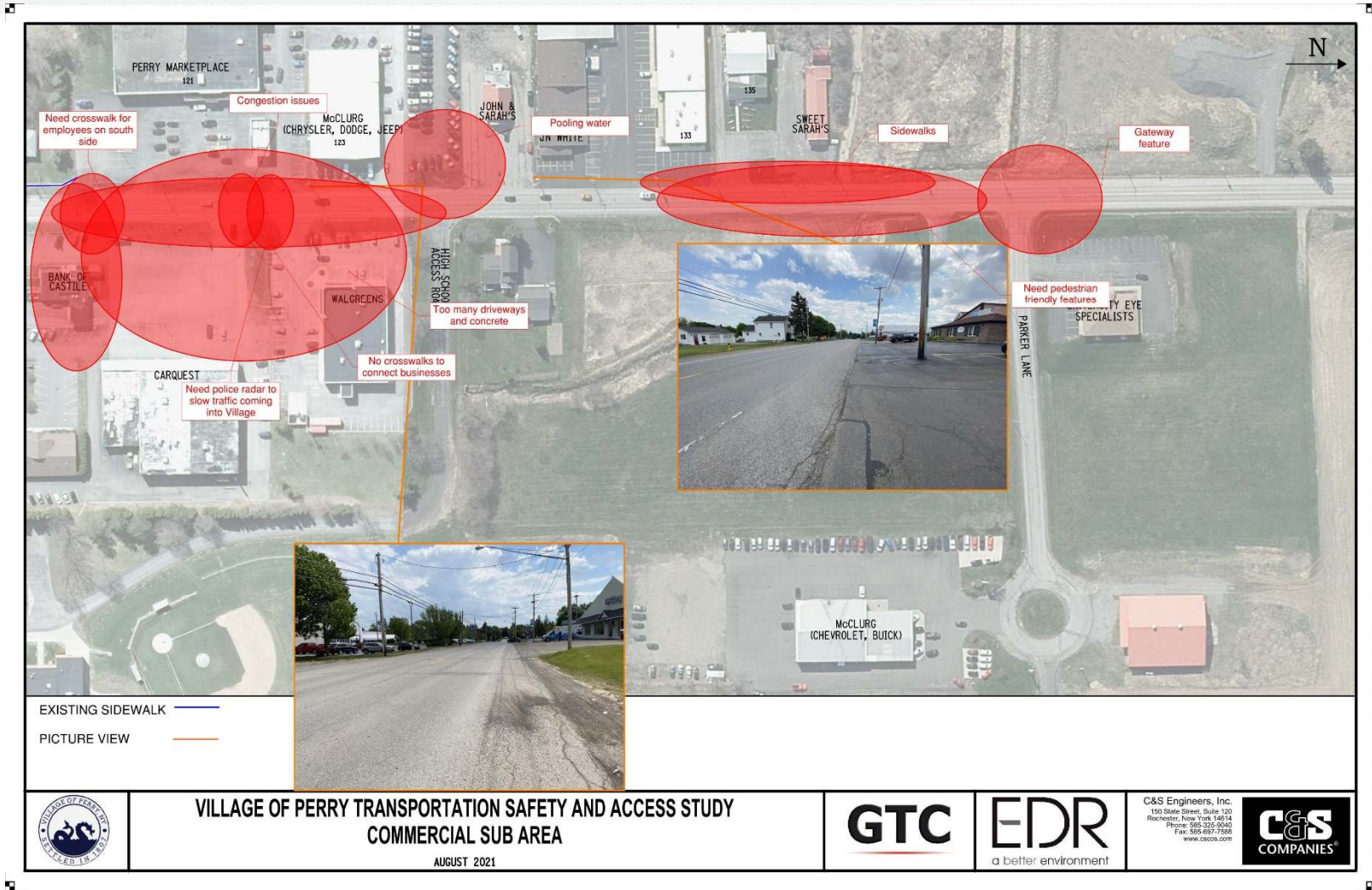
AUGUST 2021



C&S Engineers, Inc.
 150 State Street, Suite 120
 Rochester, New York 14614
 Phone: 585-225-9040
 Fax: 585-497-1588
 www.cseos.com



Open House -



Inventory & Analysis



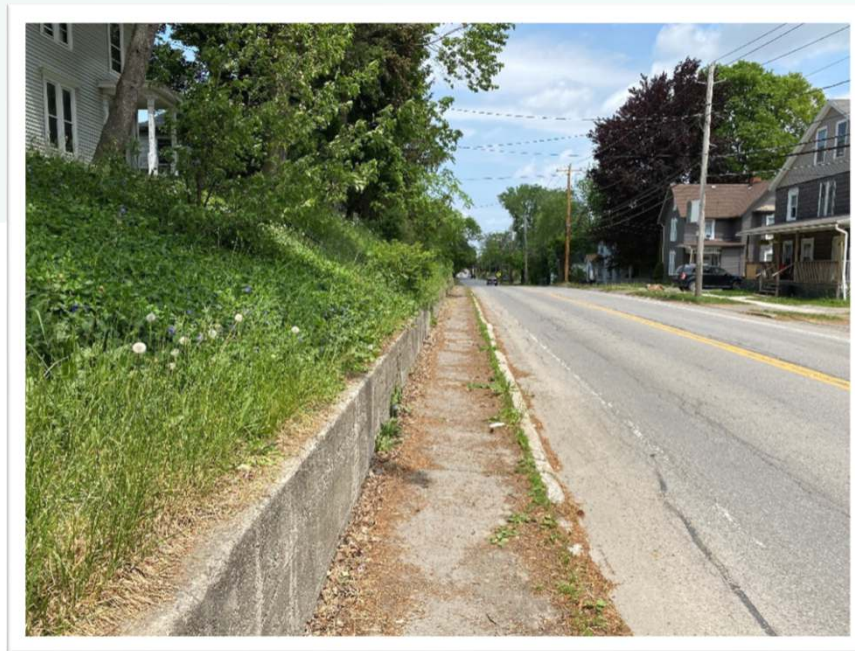
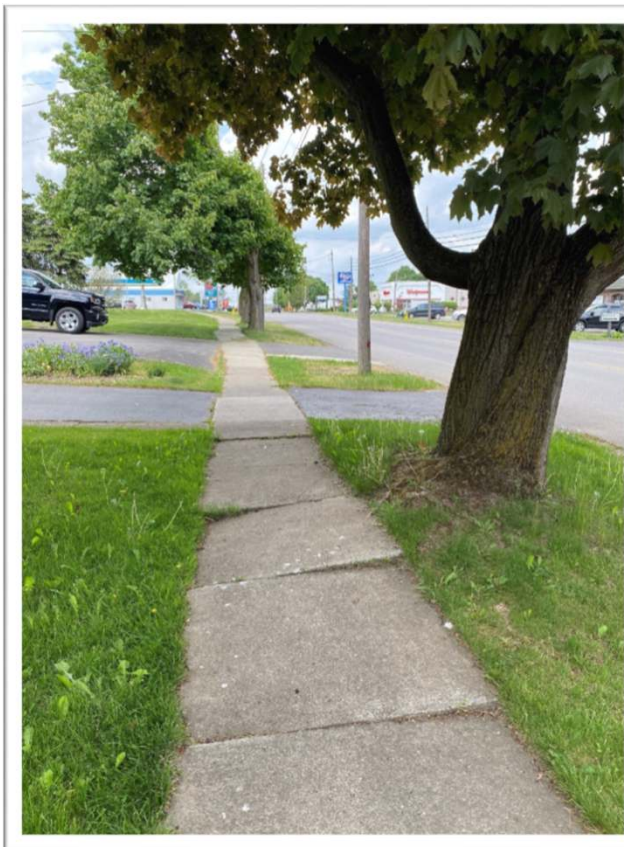
Inventory & Analysis

- Findings indicate areas in need of improvement and a few unique design challenges



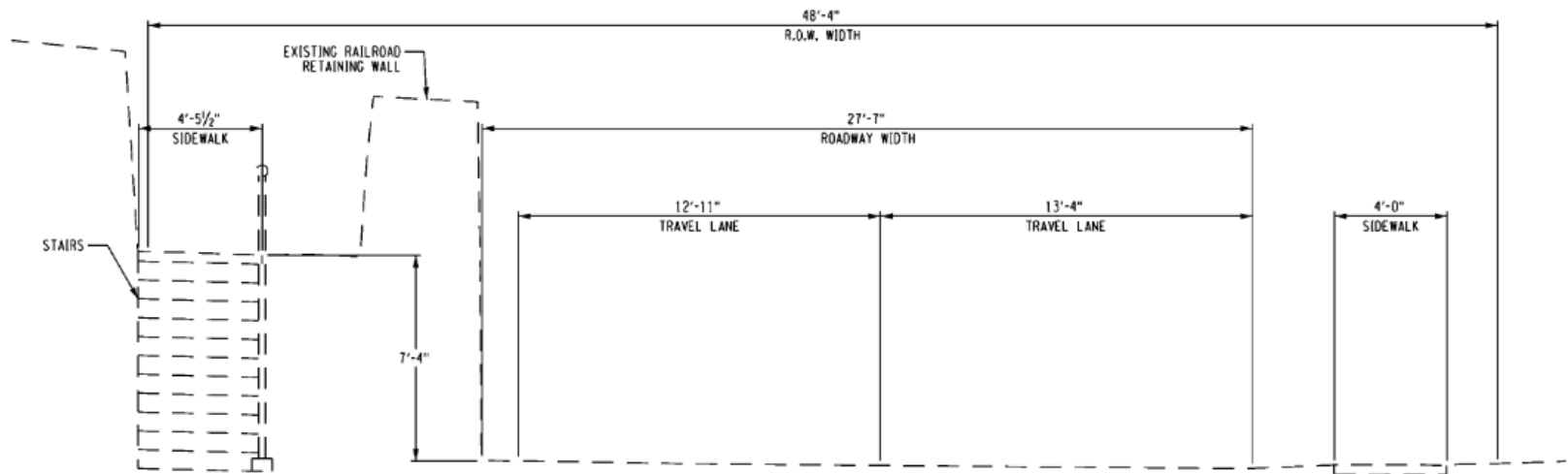
Inventory & Analysis

- Restoring Accessibility



Inventory & Analysis

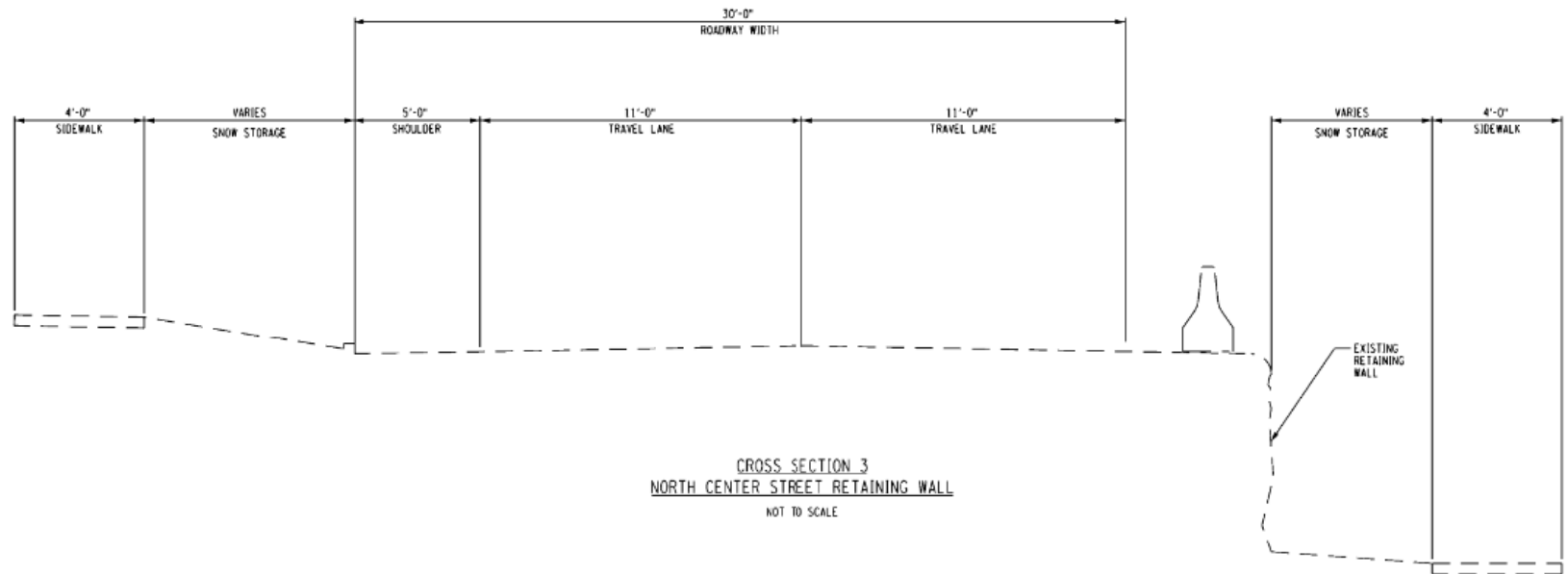
- Unique Design Challenges



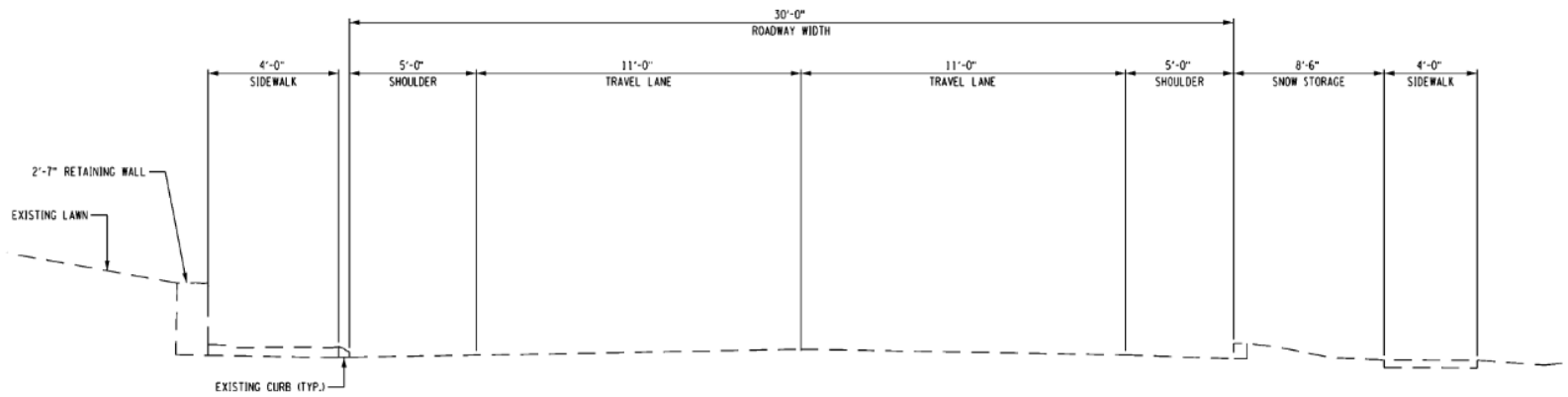
CROSS SECTION 1
SOUTH CENTER STREET AT RR RETAINING WALL
NOT TO SCALE

Inventory & Analysis

- Unique Design Challenges



Inventory & Analysis



CROSS SECTION 4
NOT TO SCALE

Inventory & Analysis

- Drainage Issues



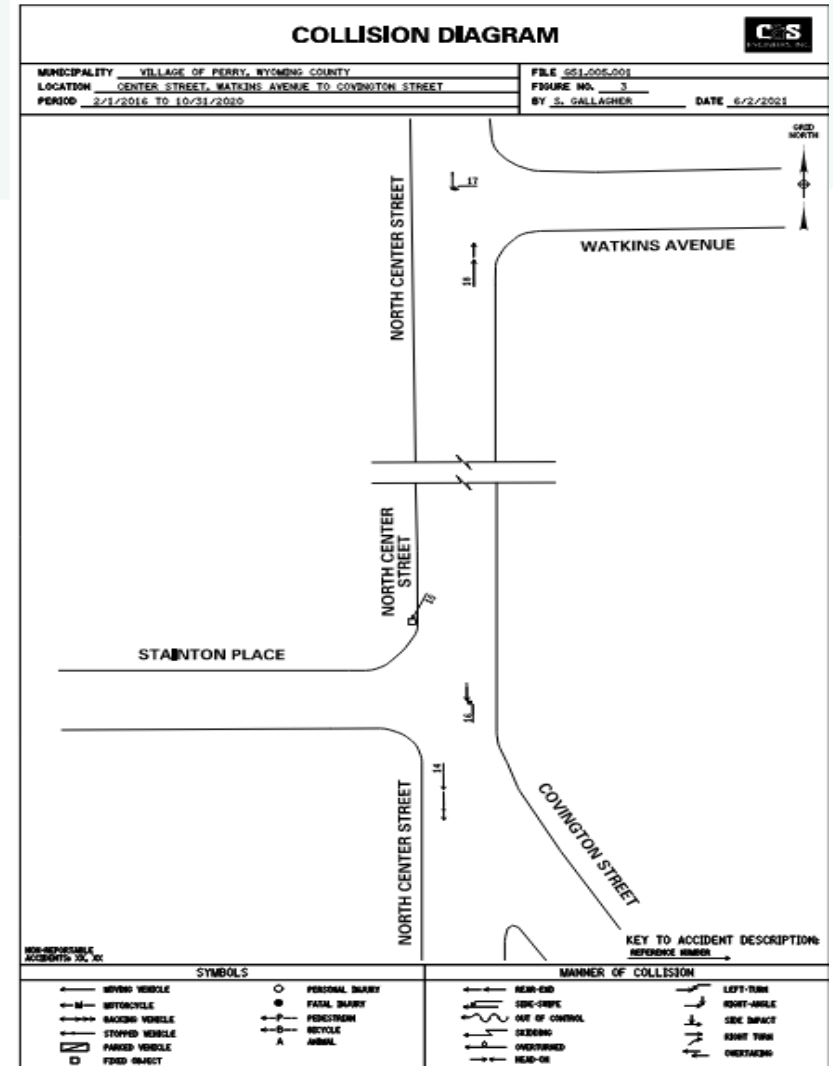
Inventory & Analysis

- Little to no control of access for vehicles into and out of businesses
- Consider traffic calming measures



Inventory & Analysis

- Traffic Volume & Accident Analysis
- Accidents rate along corridor is about 14% above the Statewide Average



Entire Year Analysis	Total # Accidents	AADT ¹	Segment Length	Total Acc Rate	Avg Acc Rate ²	% > AAR
Center Street Segment						
South Main Street to Village Line	27	4514	1.1	3.10	2.72	14%