

8/17/99

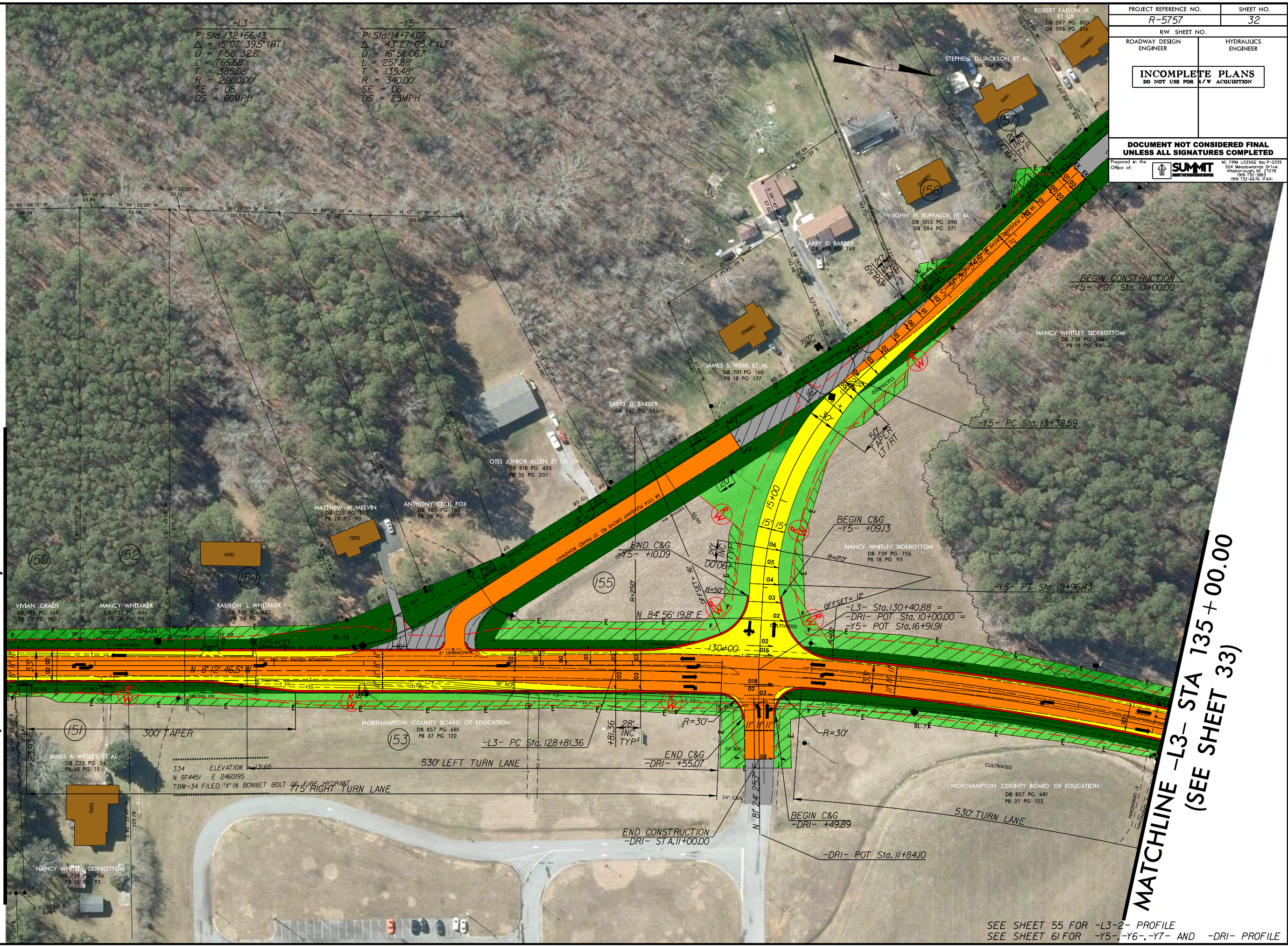
REVISIONS

MATCHLINE -L3- STA 122 + 00.00  
(SEE SHEET 31)

PROJECT REFERENCE NO. <b>R-5757</b>	SHEET NO. <b>32</b>
RW SHEET NO.	
ROADWAY DESIGN ENGINEER	HYDRAULICS ENGINEER
<b>INCOMPLETE PLANS</b> DO NOT USE FOR R/W ACQUISITION	
<b>DOCUMENT NOT CONSIDERED FINAL</b> UNLESS ALL SIGNATURES COMPLETED	
Prepared in the Office of: <b>SUMMIT</b>	NC FIRM LICENSE No. P-0339 504 Meadows Drive Hillsborough, NC 27278 (919) 732-3883 (919) 732-6616 (FAX)

**-L3-**  
 PI Sta 132+66.43  
 $\Delta = 15^{\circ}07'39.5"$  (RT)  
 $D = 1^{\circ}58'32.6"$   
 $L = 765.68'$   
 $T = 385.08'$   
 $R = 2900.00'$   
 $SE = 05$   
 $DS = 60MPH$

**-Y5-**  
 PI Sta 14+74.07  
 $\Delta = 43^{\circ}27'05.4"$  (LT)  
 $D = 16^{\circ}51'06.1"$   
 $L = 257.85'$   
 $T = 135.48'$   
 $R = 340.00'$   
 $SE = 06$   
 $DS = 25MPH$



MATCHLINE -L3- STA 135 + 00.00  
(SEE SHEET 33)

SEE SHEET 55 FOR -L3-2- PROFILE  
SEE SHEET 61 FOR -Y5-, -Y6-, -Y7- AND -DRI- PROFILE

8/17/99  
R-5757-32-32.PHM.dgn  
SPENCER.MERITT