

Paw Creek Greenway

Little Rock Rd to Loy Ct

Public Information Session: April 22, 2021



Mecklenburg County
Park and Recreation



Getting to know Zoom



Zoom Meeting You are viewing Park & Rec's screen View Options

You Park & Rec Your Neighbor The Consultant Elected Official Another Neighbor

Participants (8)

Find a participant

- You
- Park & Rec
- Your Neighbor
- The Consultant
- Elected Official
- Another Neighbor

Invite Unmute Me ...

Chat

To: Everyone

Type message here...

Unmute Start Video Participants (8) Chat Share Screen Record Reactions Leave

Stay muted! Video optional.

Red line through microphone = muted Red line through video = off

Unmute Start Video

Ask questions and add comments to the chat throughout the meeting!

Project Team



Mecklenburg County
Park and Recreation



Landscape Architecture
and Civil Engineering



Surveying



Geotechnical/Environmental
Engineering

Paw Creek Fun Facts



Mecklenburg County
Park and Recreation



- Paw Creek flows through western Meck County
 - Begins near Toddville Road
 - Runs into the Catawba River south of I-85
- It's probably not named for an animal's paw, but for the wild fruit trees, known as pawpaws, that once grew on its banks.
- A map from 1789, just after the Revolutionary War, shows Paw Creek as 1 of 12 named creeks in Meck Co.
- One historic landmark near the creek is the
 - 1881 home of Edward Rozzell, who was born in the Paw Creek community.
 - The Rozzell family (sometimes spelled Rozzelle) was important in the area, because it operated the Rozzell Ferry – the only ferryboat operating on the Catawba River in Mecklenburg County before the Civil War. The ferry carried travelers between Mecklenburg and Gaston counties until well into the 20th century, when a bridge replaced it. Today the name of Rozzelles Ferry Road in western Charlotte is a reminder of the days before the bridge.



Pawpaw tree, with fruit. The creek was probably named for pawpaws that once grew on its banks. Photo: Scott Bauer

Greenways Overview



Mecklenburg County
Park and Recreation



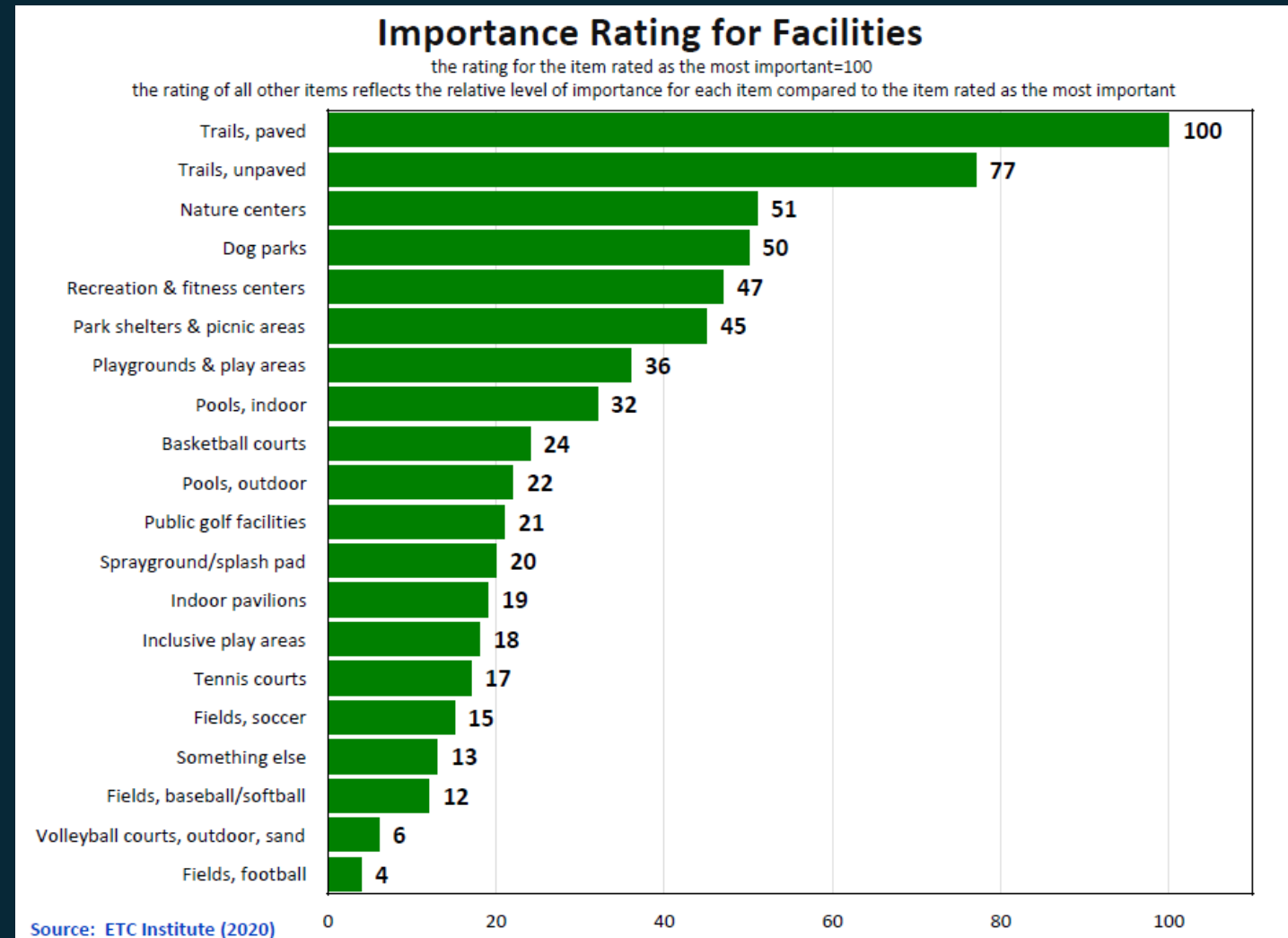
- Vegetated natural buffers that help protect water quality, reduce the impacts of flooding and provide wildlife habitat.
- Linear parks that connect people and places
- Trails that provide recreation, transportation, fitness and economic benefits for all to enjoy.
- Promote diversity, health, quality of life, good business and stretch our tax dollars.

Little Sugar Creek Greenway

Greenways Overview



- In 1966, the Charlotte-Mecklenburg Master Plan for recreation recommended greenways “as logical natural elements useful in creating a sense of physical form and order within the city.”
- **#1 Amenity** requested by the residents today
- Greenway Master Plan includes 308 miles of greenway trails and 200+ miles of urban trails



Accelerated Greenway Plan



Mecklenburg County
Park and Recreation



- Accelerated plan is to complete 30 new miles of greenway between 2019 - 2023

Miles	Greenway Development Status
56.5	Existing/Developed
9.3	Funded – In Construction (Includes City + Town projects)
28.9	Funded – In Design
3.8	Funded – By Others
~98	Total Greenway Miles funded through FY2023



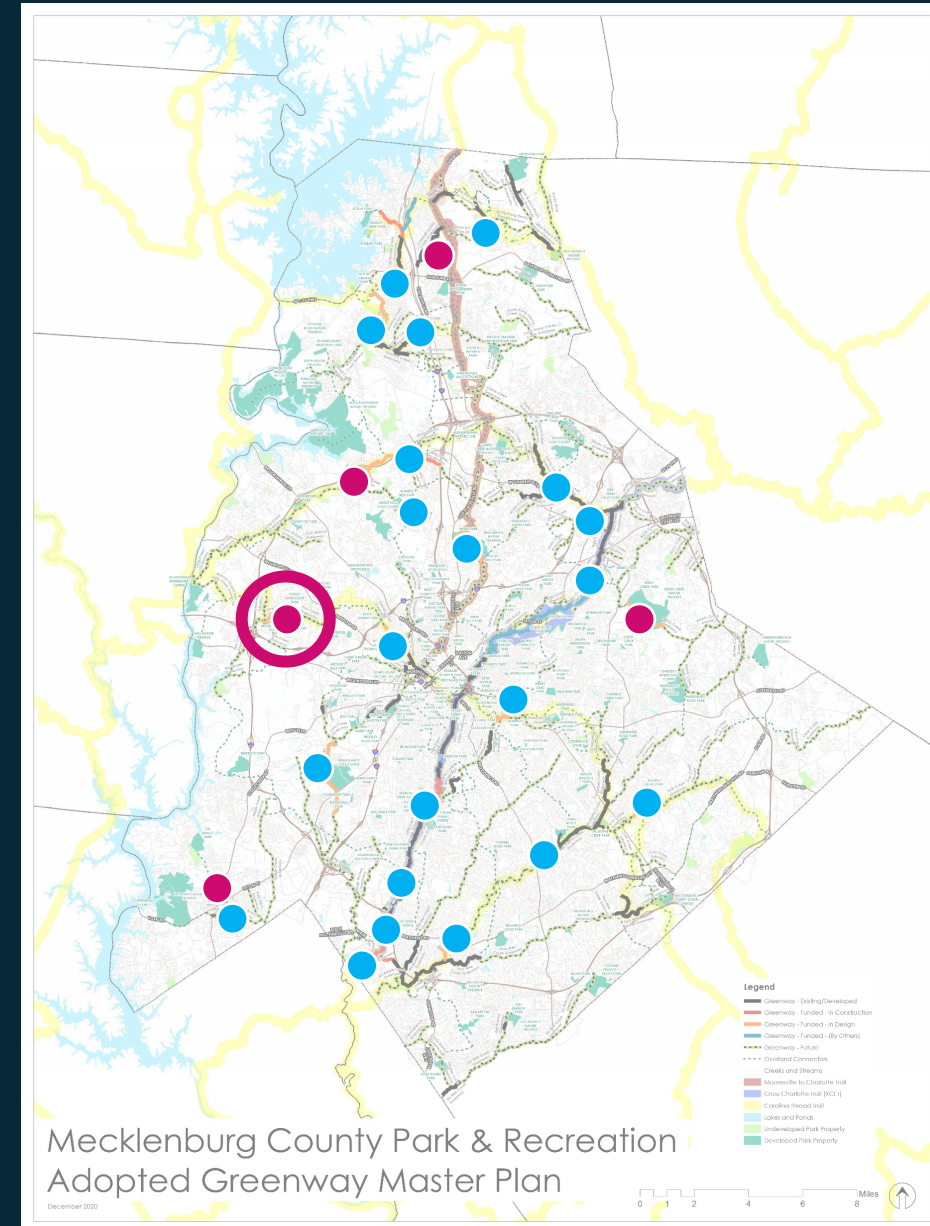
Greenway Project Locations



Mecklenburg County
Park and Recreation



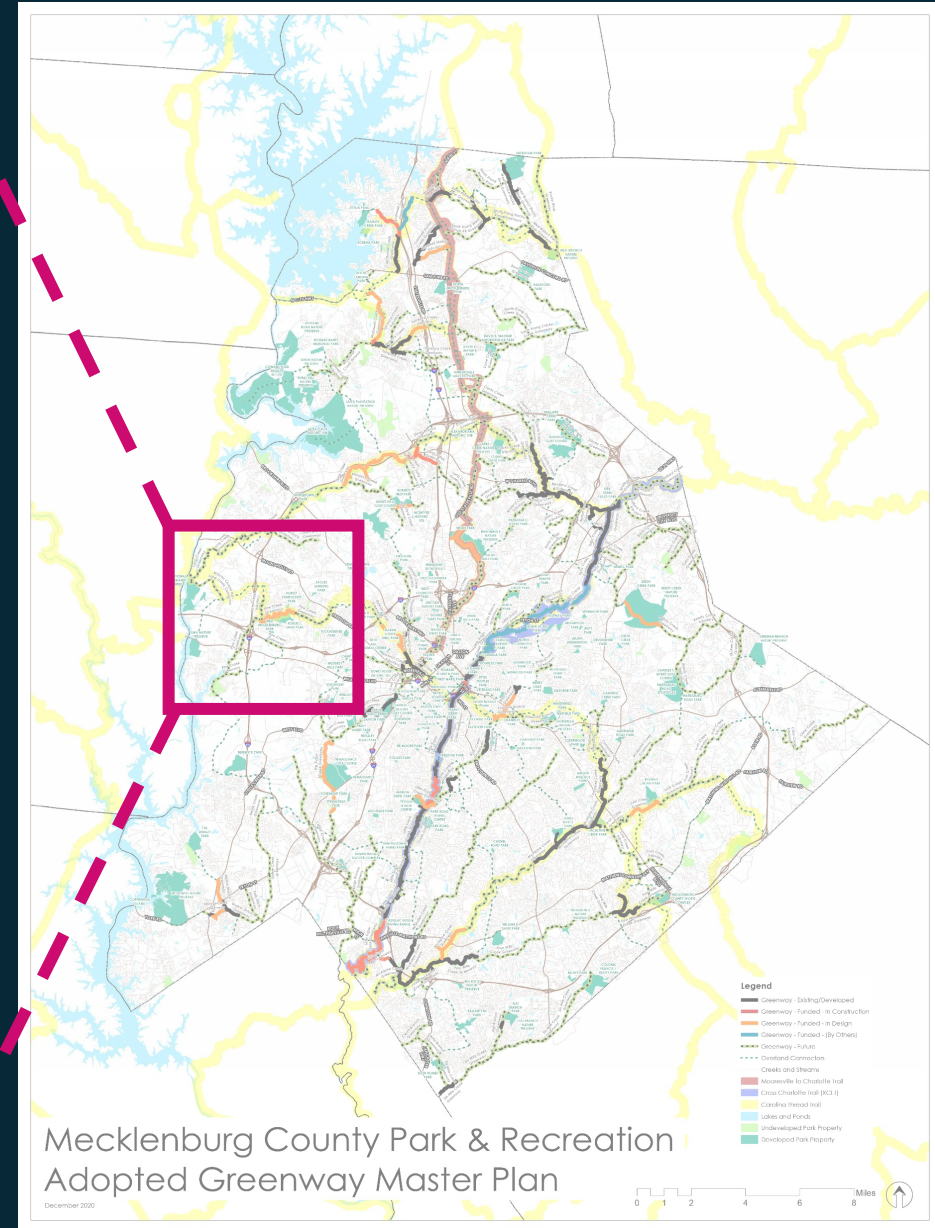
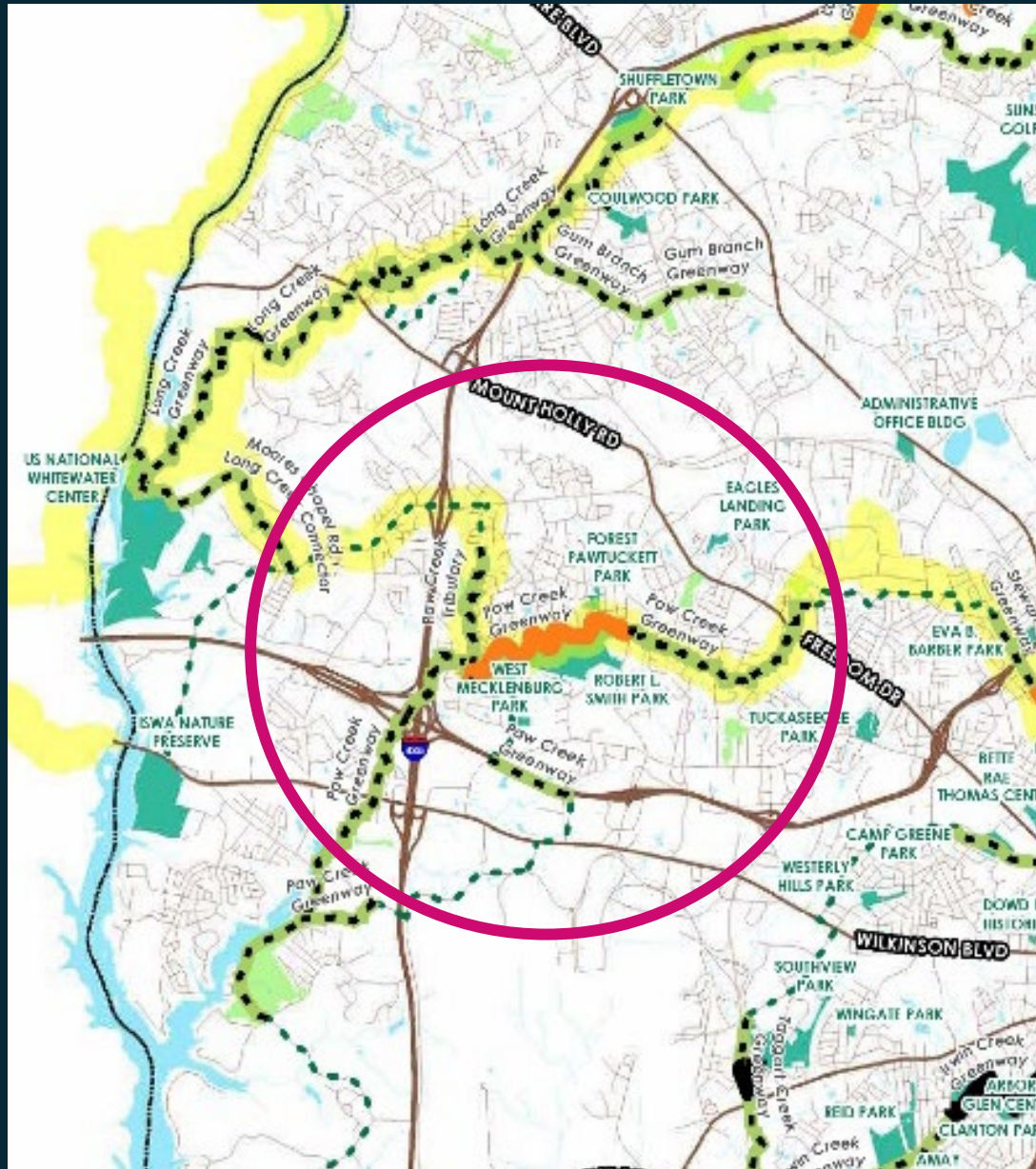
- CIP Funded Projects
- Accelerated Greenway Projects



Paw Creek Greenway



Mecklenburg County
Park and Recreation



Robert L. Smith Park



Mecklenburg County
Park and Recreation



The park features:

- Playground
- Walking trail
- Play meadow
- Restrooms
- Parking
- Three soccer fields

This park is named for Officer Robert L. Smith, a Charlotte police officer slain in the line of duty. Officer Smith was shot and killed January 15, 1987 while responding to a call of someone shooting into a condominium complex at Spyglass Place in the Pawtuckett Community, part of the old Adam-3 District.

Project Schedule



Mecklenburg County
Park and Recreation



Design and
Permitting


Fall 2020 - Late 2021

Bidding

Spring 2022*

Construction

Summer 2022 - Summer 2023*



Public Input Session:
April 22, 2021

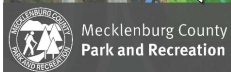
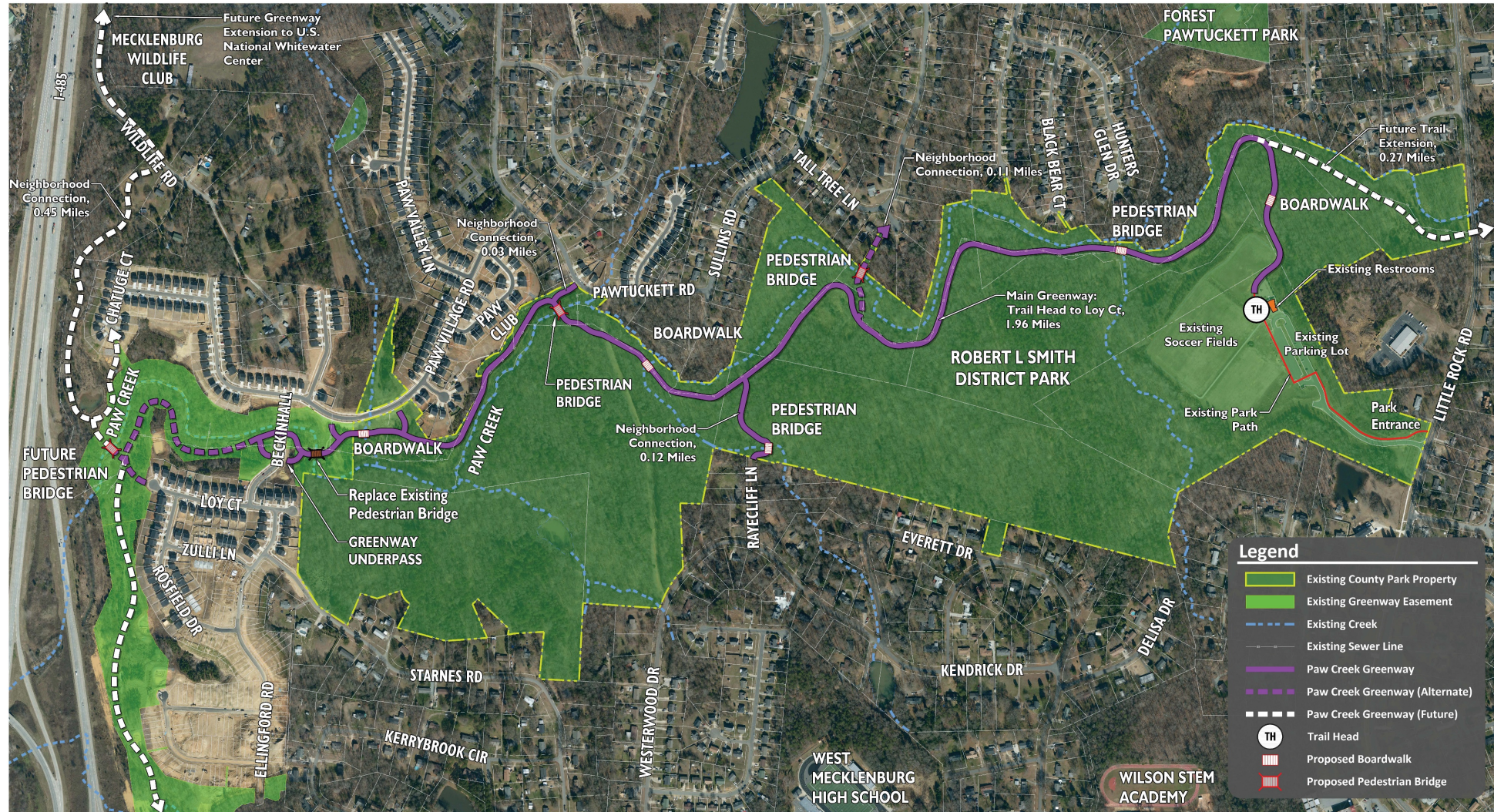
**Target Dates are subject to change due to permitting.*



Overview Map



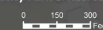
Mecklenburg County
Park and Recreation

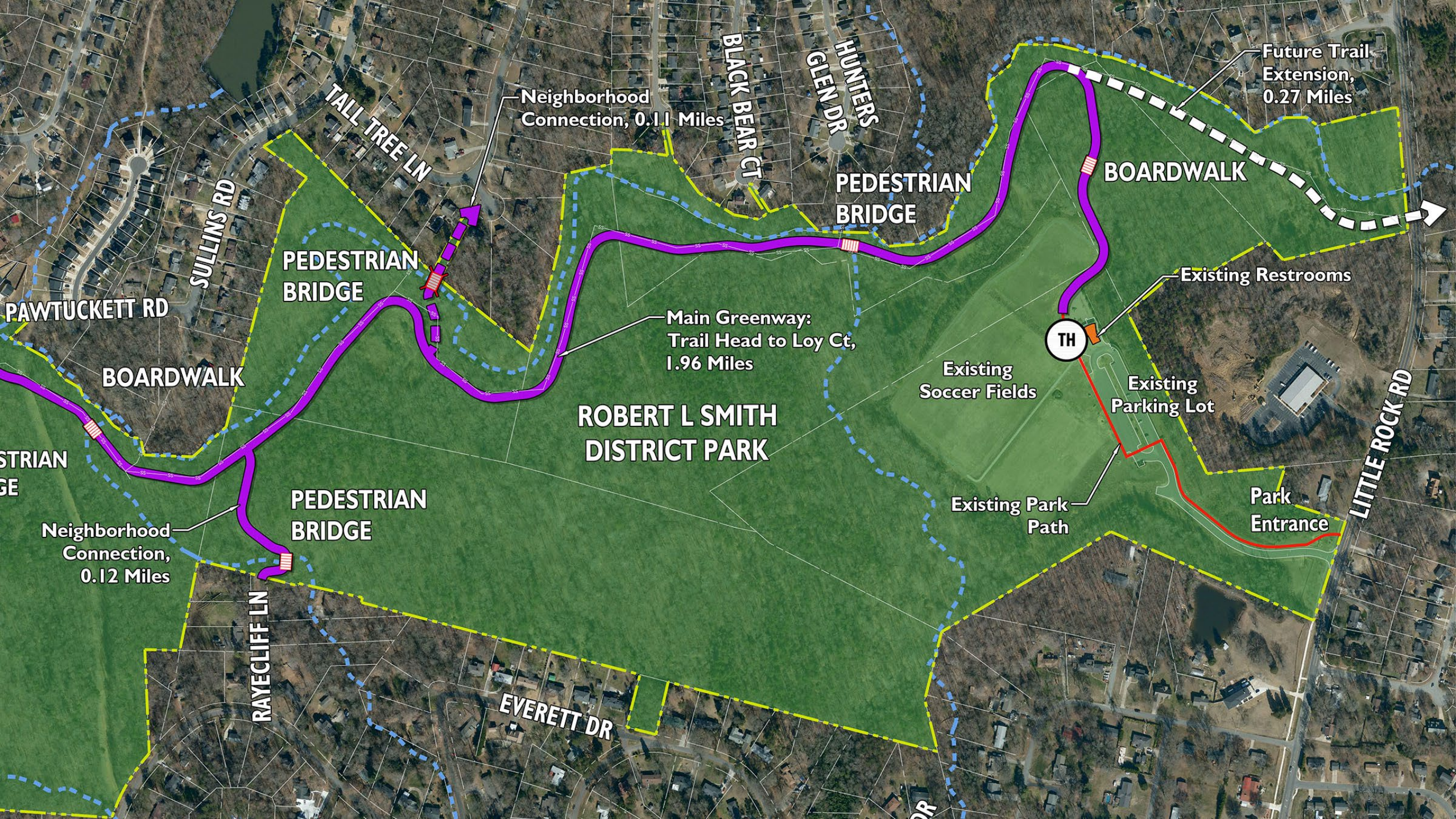


Paw Creek Greenway | Site Plan

Charlotte, NC

Mecklenburg County Park & Recreation | 04.08.21





ROBERT L SMITH DISTRICT PARK

Main Greenway:
Trail Head to Loy Ct,
1.96 Miles

Neighborhood
Connection, 0.11 Miles

Neighborhood
Connection,
0.12 Miles

Future Trail
Extension,
0.27 Miles

TH

PEDESTRIAN
BRIDGE

PEDESTRIAN
BRIDGE

BOARDWALK

Existing Restrooms

BOARDWALK

Existing
Soccer Fields

Existing
Parking Lot

Existing Park
Path

Park
Entrance

SULLINS RD

TALL TREE LN

BLACK BEAR CT

HUNTERS
GLEN DR

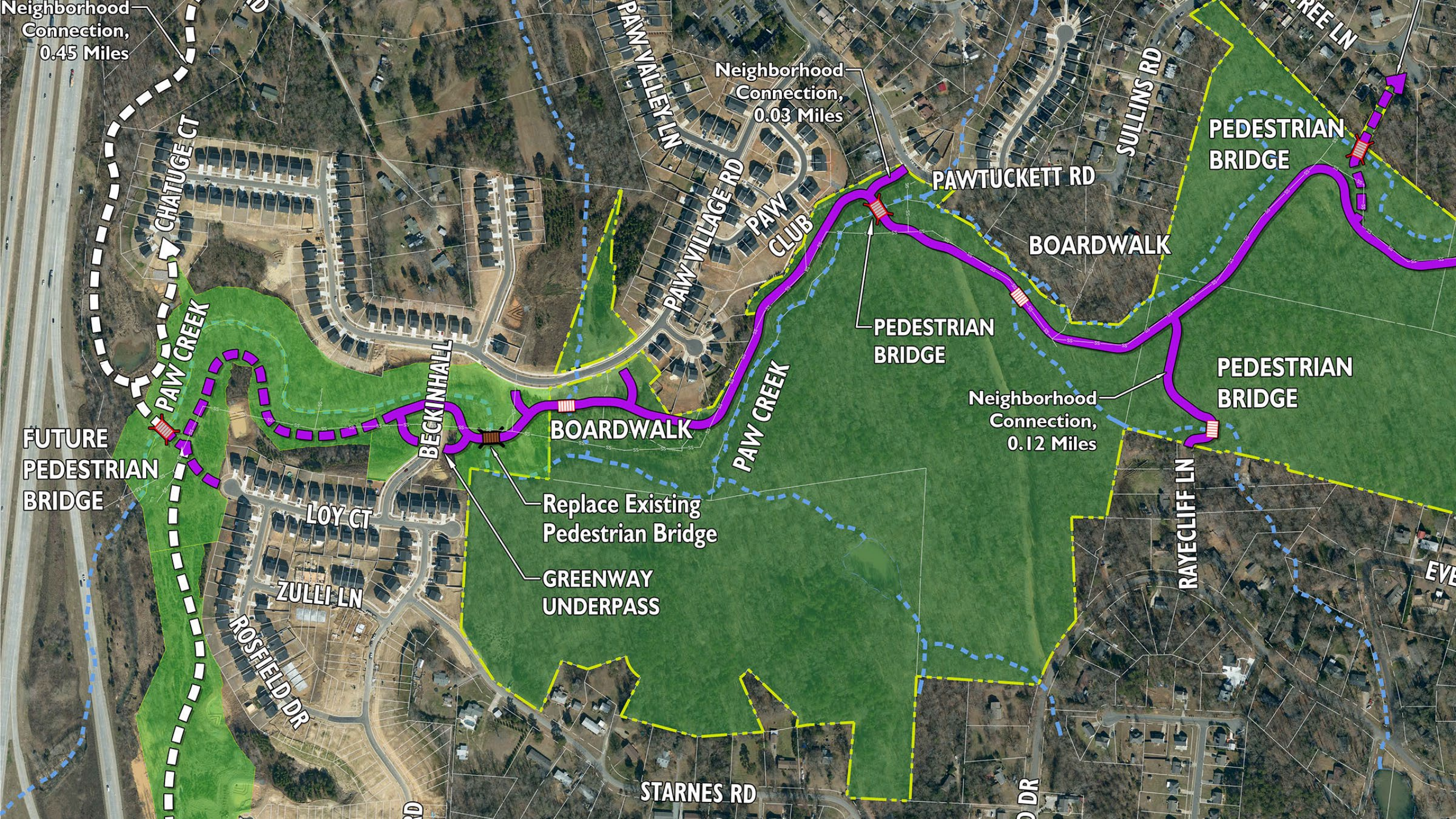
PAWTUCKETT RD

RAYECLIFF LN

EVERETT DR

LITTLE ROCK RD

STRIAN
GE



Neighborhood Connection, 0.45 Miles

Neighborhood Connection, 0.03 Miles

Neighborhood Connection, 0.12 Miles

FUTURE PEDESTRIAN BRIDGE

PEDESTRIAN BRIDGE

PEDESTRIAN BRIDGE

PEDESTRIAN BRIDGE

BOARDWALK

Replace Existing Pedestrian Bridge

GREENWAY UNDERPASS

BOARDWALK

CHATURGE CT

PAW CREEK

BECKINHALL

LOY CT

ZULLI LN

ROSFIELD DR

STARNES RD

PAW VALLEY LN

PAW VILLAGE RD

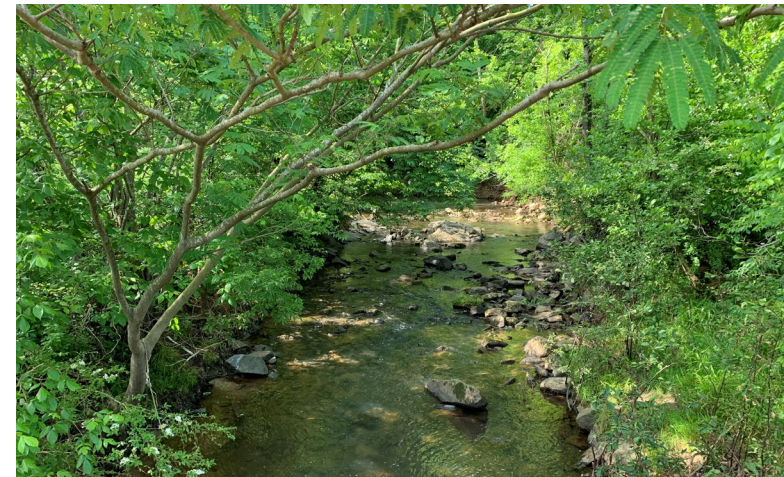
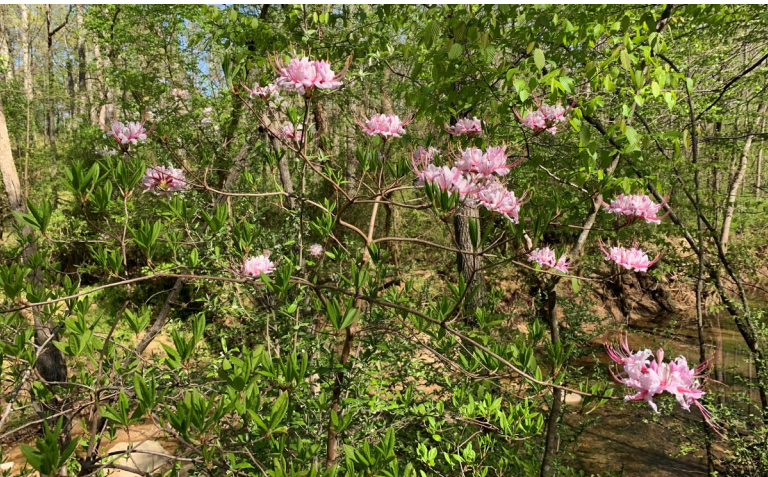
PAW CLUB

PAWTUCKETT RD

SULLINS RD

RAYCLIFF LN

EVE



Example Bridge



Mecklenburg County
Park and Recreation



Photo from
Little Sugar
Creek Greenway

Example Boardwalk



Mecklenburg County
Park and Recreation



Photo from
Toby Creek
Greenway

Example Greenway Underpass

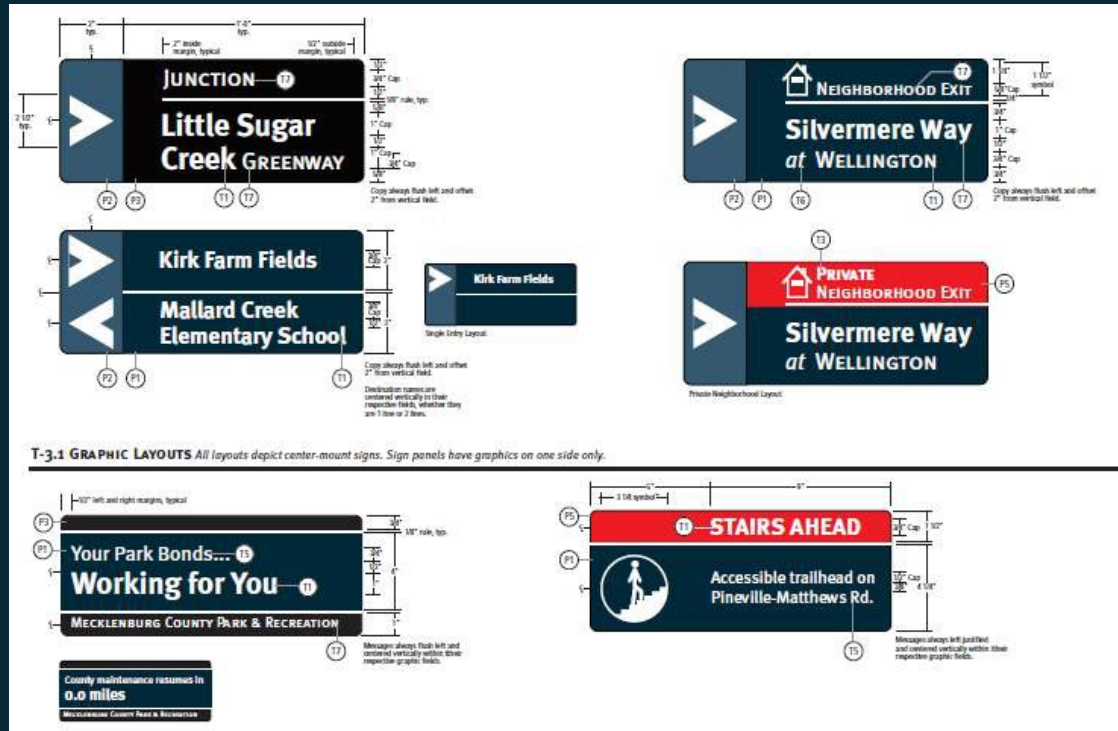


Mecklenburg County
Park and Recreation



Photo from Little
Sugar Creek
Greenway at
Archdale Road

Example Signage



Questions?



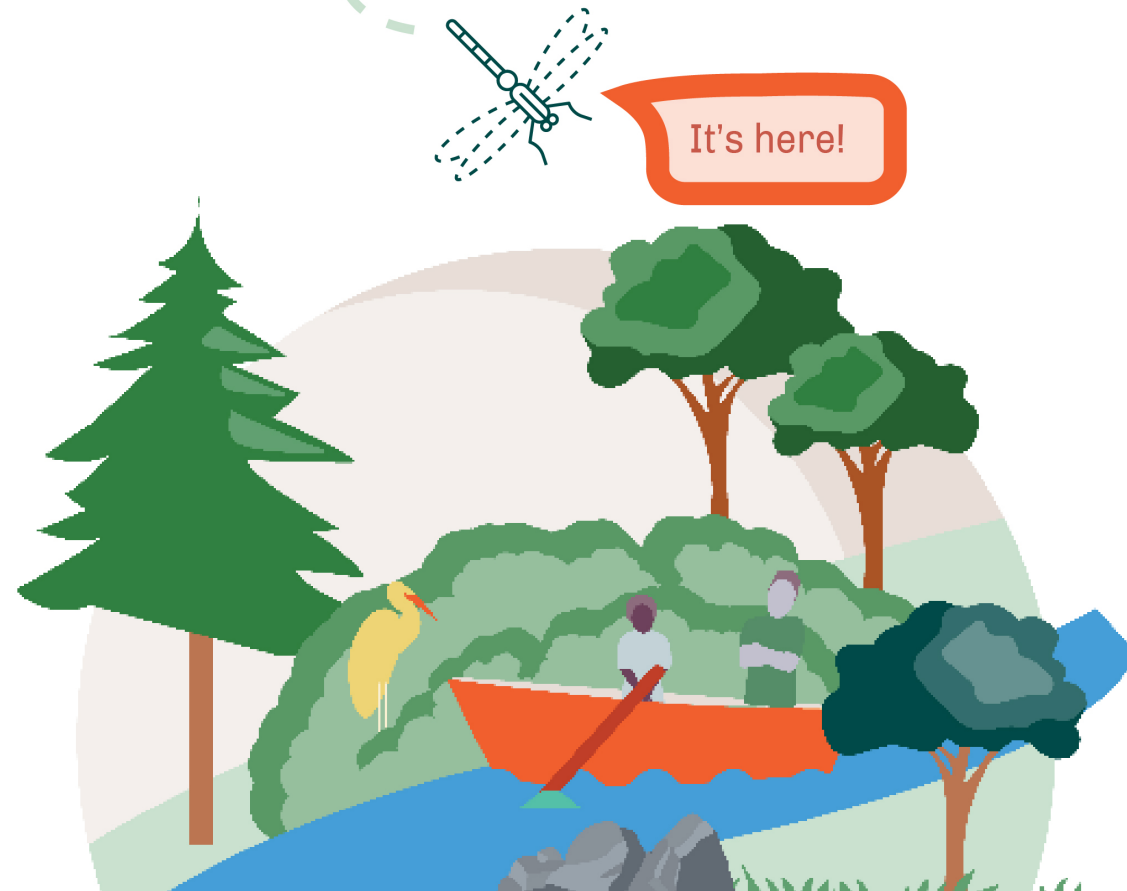
PublicInput.com/PawCreek

- Legend**
- Existing County Park Property
 - Existing Greenway Easement
 - Existing Creek
 - Existing Sewer Line
 - Paw Creek Greenway
 - Paw Creek Greenway (Alternate)
 - Paw Creek Greenway (Future)
 - Trail Head
 - Proposed Boardwalk
 - Proposed Pedestrian Bridge

Meck **Playbook**

Executive Summary

Read the
document and
**share your
feedback!**



A photograph of a paved path in a park. On the left, a man in a grey Nike t-shirt and blue shorts is jogging. In the center, a woman in a light blue shirt and grey pants is walking away. To her right, a man in a pink shirt and black pants is walking away, carrying a large green plant. In the foreground, a woman in a black shirt and blue jeans is pushing a stroller. At the end of the path, a woman is walking a brown dog. The path is surrounded by green grass and trees.

Thank you!

Contact:

Katie Lloyd, PLA, ASLA

Senior Planner

980-266-0691

Katie.Lloyd@MeckNC.gov

PublicInput.com/PawCreek