

CITY OF SALEM

PROCTOR STREET

FROM MANSELL PARKWAY TO RT 107/ HIGHLAND AVENUE



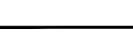






INDEX

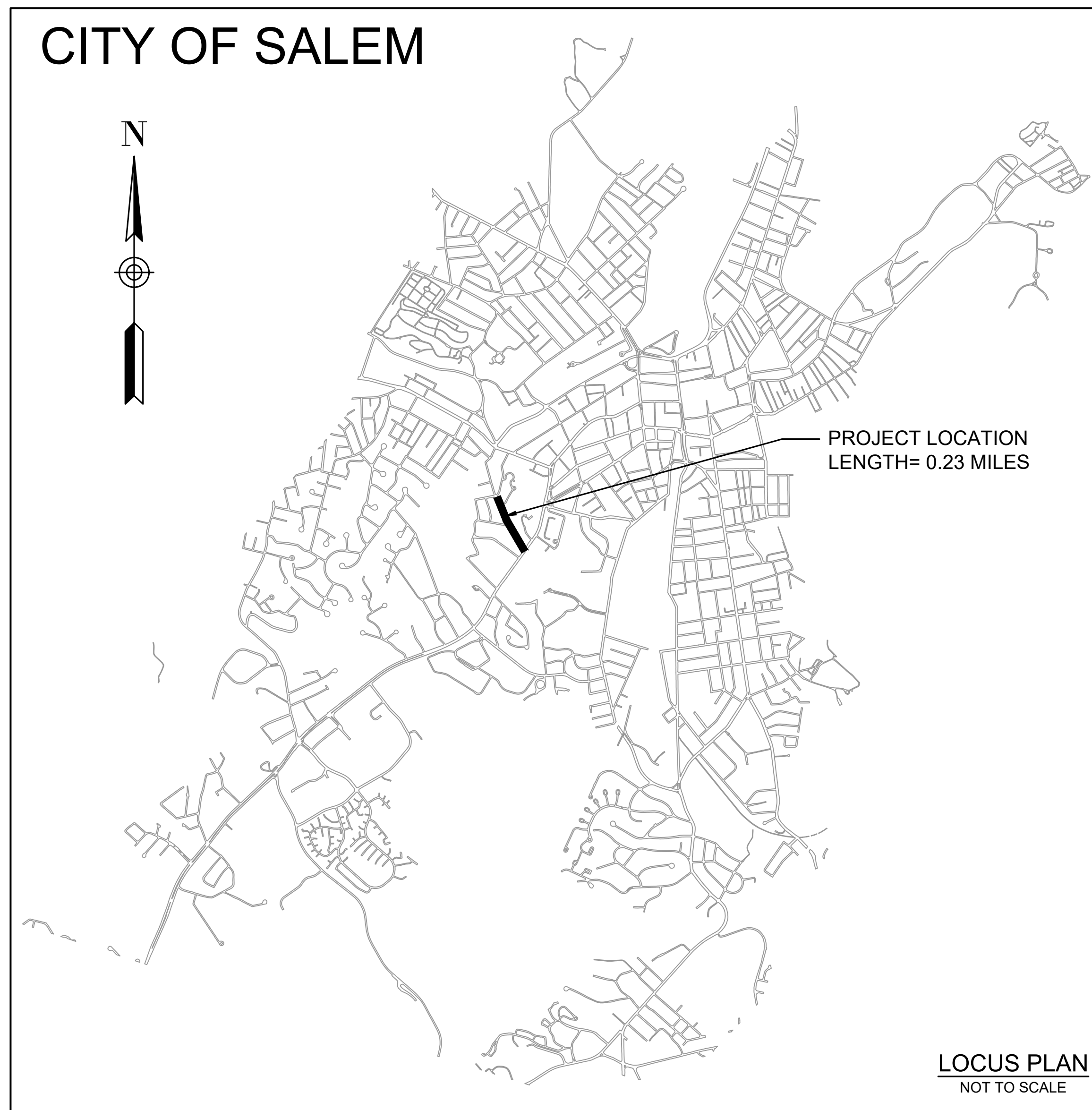
SHEET NO.	PLAN TITLE
1	TITLE SHEET AND NOTES
2-4	PAVEMENT MARKING AND SIGNAGE

GENERAL NOTES

1. THE CONTRACTOR SHALL COMPLY WITH ALL APPLICABLE FEDERAL, STATE, AND LOCAL LAWS, RULES, REGULATIONS AND SAFETY CODES IN THE CONSTRUCTION OF ALL IMPROVEMENTS. SIGN AND STRIPING WORK SHALL ALSO MEET ALL APPLICABLE REQUIREMENTS OF THE MANUAL OF UNIFORM TRAFFIC CONTROL DEVICES (MUTCD).
2. BASE MAPPING WAS PREPARED FROM AUTOCAD GEOLOCATION AERIAL IMAGERY, CITY OF SALEM GIS DATA, AND FIELD MEASUREMENTS.
3. THE CONTRACTOR SHALL VERIFY BASE MAPPING IN THE FIELD PRIOR TO PLACING STRIPING OR SYMBOLS AND REPORT ANY DISCREPANCIES TO THE ENGINEER PRIOR TO START OF WORK. WHEN THESE PLANS ARE IN CONFLICT WITH ACTUAL SITE CONDITIONS, THE CONTRACTOR SHALL CONTACT THE CITY AND ENGINEER. PROPOSED STRIPING MAY ONLY BE ADJUSTED AS DIRECTED BY THE ENGINEER.
4. NOT ALL DRIVEWAYS ARE SHOWN ON THE DRAWINGS.
5. MARKED CROSSWALKS SHOWN ON THE DRAWINGS ARE APPROXIMATE AND NOT ALL CROSSWALKS ARE SHOWN.
6. ALL PAVEMENT MARKINGS ARE PAINT UNLESS OTHERWISE NOTED.
7. THE CONTRACTOR SHALL TAKE ADEQUATE PRECAUTIONS TO PROTECT ALL WALKS, GRADING, SIDEWALKS, AND FEATURES OUTSIDE OF THE LIMITS OF WORK AND SHALL REPAIR AND REPLACE OR OTHERWISE MAKE GOOD ANY SUCH OR OTHER DAMAGE CAUSED BY CONTRACTOR AT NO ADDITIONAL COST AS DIRECTED BY THE ENGINEER OR OWNER'S DESIGNATED REPRESENTATIVE.
8. EXISTING PEDESTRIAN RAMP LOCATIONS ARE NOT SHOWN. EXISTING PEDESTRIAN RAMPS HAVE NOT BEEN REVIEWED FOR ADA COMPLIANCE.
9. THE EXISTING STREET VARIES IN WIDTH, CONTRACTOR SHALL ESTABLISH A WORKING CENTERLINE TO BE EQUIDISTANT BETWEEN CURBS.

QUANTITIES SUMMARY

ITEM	IMAGE	UNIT SIZE		QUANTITY	UNIT	NOTES	DETAILS
		W	H				
MA-R2-8		24"	42"	2	EA	MOUNT ON EXISTING POSTS	SEE MUTCD STANDARD DETAIL
SPEED CUSHION		6'	3"	10	EA		SEE TRAFFIC LOGIX STANDARD SPEED CUSHION DETAIL
4" WHITE LINE		4"	N/A	1,2785	LF		SEE CITY OF SALEM STANDARD DETAIL
8" WHITE LINE		4"	N/A	300	LF		
12" WHITE LINE		12"	N/A	725	LF		
4" YELLOW LINE		4"	N/A	2,300	LF		
8" YELLOW LINE		4"	N/A	25	LF		
WHITE FLEXPOST		N/A	28"	13	EA		
YELLOW FLEXPOST		N/A	28"	14	EA		



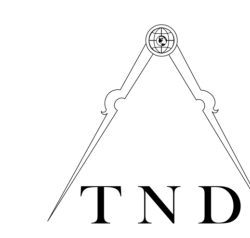
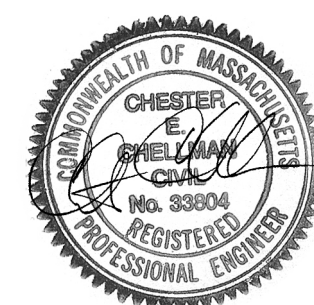
PS&E SUBMISSION

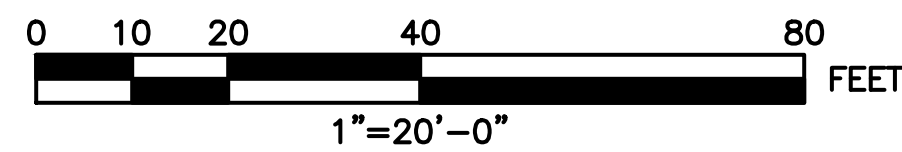
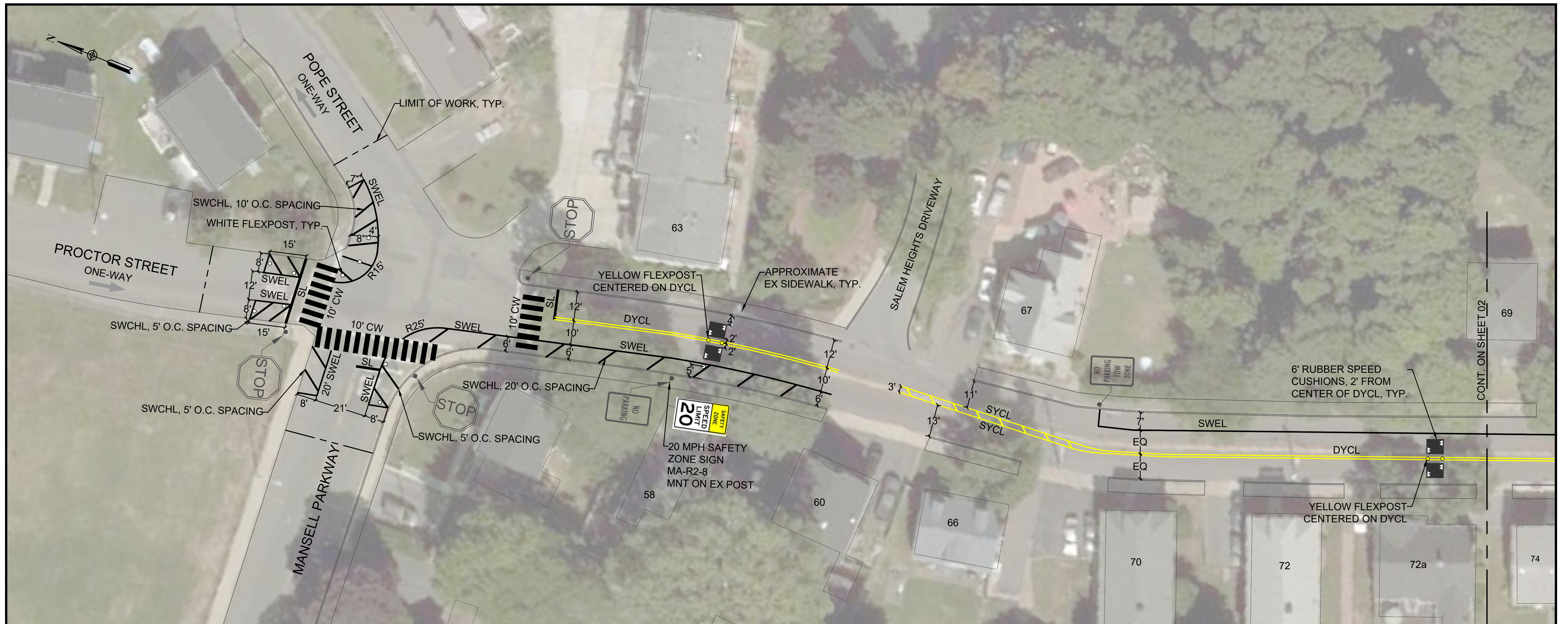
TITLE SHEET AND NOTES

PROCTOR STREET
CITY OF SALEM, MA

DESIGNED BY:	JM	DATE:	08/04/2022
PREPARED BY:	JM	SHEET:	01 OF 04
CHECKED BY:	RC		

ALL WORK SHALL CONFORM TO THESE PLANS, AND THE MOST RECENT VERSIONS OF THE MANUAL ON UNIFORM TRAFFIC CONTROL DEVICES FOR STREETS AND HIGHWAYS. IN THE EVENT OF CONFLICTS OR DISCREPENCIES, THE ENGINEER SHALL BE CONTACTED FOR RESOLUTION.





LEGEND AND ABBREVIATIONS

EXISTING	PROPOSED	EXISTING	PROPOSED	DESCRIPTION
				4" SOLID WHITE EDGE LINE
				12" MINIMUM WHITE STOP LINE (UNLESS OTHERWISE NOTED)
				WHITE CROSSWALK LINES, 24" WIDE 4' O.C.
				8" SOLID WHITE CHANNELIZATION LINE (SWCHL) 10' O.C. AT 45° UNLESS OTHERWISE NOTED
				8" SOLID YELLOW CHANNELIZATION LINE (SYCHL) 10' O.C. AT 45° UNLESS OTHERWISE NOTED
				TWO 4" DOUBLE YELLOW CENTER LINES
				8" SOLID YELLOW CHANNELIZATION LINE
				4" SOLID YELLOW CENTER LINE

SPEED CUSHION INSTALLATION NOTES

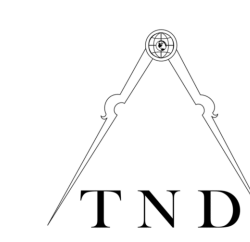
1. INSTALL 6' WIDE TEMPORARY RUBBER SPEED CUSHIONS:
 - 1.1. 2' FROM THE CENTER OF THE DYCL
 - 1.2. MAX 4' BETWEEN CUSHIONS.
 - 1.3. 10' MIN FROM DRIVEWAYS AND WALKWAYS
 - 1.4. 20' MIN FROM CROSSWALKS AND INTERSECTIONS
2. INSTALL YELLOW FLEXPOSTS CENTERED BETWEEN THE DYCL.
3. DO NOT INSTALL TEMPORARY SPEED CUSHIONS OVER ANY VALVES, MANHOLES, DRAINAGE STRUCTURES, WATER GATES, OR ANY OTHER STREET LEVEL UTILITY.
4. IF THERE ARE DISCREPANCIES IN THE FIELD FOR SPEED CUSHION PLACEMENT DUE TO UTILITIES OR DRIVEWAYS, CONTACT THE ENGINEER.

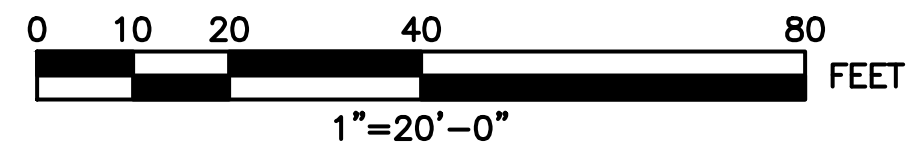
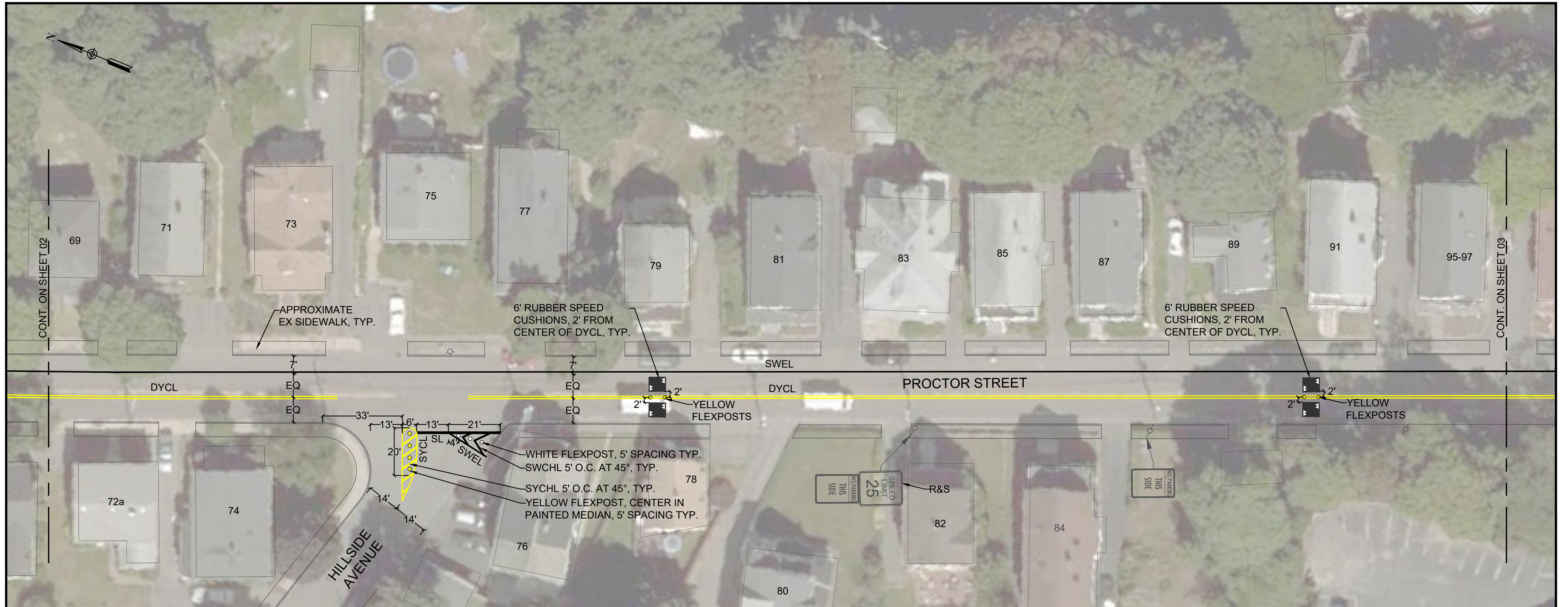
PS&E SUBMISSION

PAVEMENT MARKING AND SIGNAGE

PROCTOR STREET
CITY OF SALEM, MA

DESIGNED BY: JM
 PREPARED BY: JM
 CHECKED BY: RC
 DATE: 08/04/2022
 SHEET: 02 OF 04

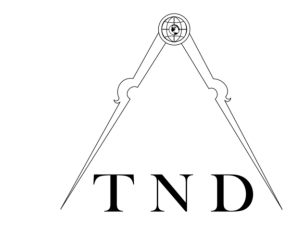




- SPEED CUSHION INSTALLATION NOTES**
- INSTALL 6' WIDE TEMPORARY RUBBER SPEED CUSHIONS:
 - 2' FROM THE CENTER OF THE DYCL
 - MAX 4' BETWEEN CUSHIONS.
 - 10' MIN FROM DRIVEWAYS AND WALKWAYS
 - 20' MIN FROM CROSSWALKS AND INTERSECTIONS
 - INSTALL YELLOW FLEXPOSTS CENTERED BETWEEN THE DYCL.
 - DO NOT INSTALL TEMPORARY SPEED CUSHIONS OVER ANY VALVES, MANHOLES, DRAINAGE STRUCTURES, WATER GATES, OR ANY OTHER STREET LEVEL UTILITY.
 - IF THERE ARE DISCREPANCIES IN THE FIELD FOR SPEED CUSHION PLACEMENT DUE TO UTILITIES OR DRIVEWAYS, CONTACT THE ENGINEER.

LEGEND AND ABBREVIATIONS

EXISTING	PROPOSED	EXISTING	PROPOSED
	CONT		SWEL 4" SOLID WHITE EDGE LINE
	EX		SL 12" MINIMUM WHITE STOP LINE (UNLESS OTHERWISE NOTED)
	EQ		CW WHITE CROSSWALK LINES, 24" WIDE 4' O.C.
	MNT		SWCHL 8" SOLID WHITE CHANNELIZATION LINE (SWCHL) 10' O.C. AT 45° UNLESS OTHERWISE NOTED
	O.C.		SYCHL 8" SOLID YELLOW CHANNELIZATION LINE (SYCHL) 10' O.C. AT 45° UNLESS OTHERWISE NOTED
	R		DYCL TWO 4" DOUBLE YELLOW CENTER LINES
	R&R		SYCHL 8" SOLID YELLOW CHANNELIZATION LINE
	TYP		SYCL 4" SOLID YELLOW CENTER LINE

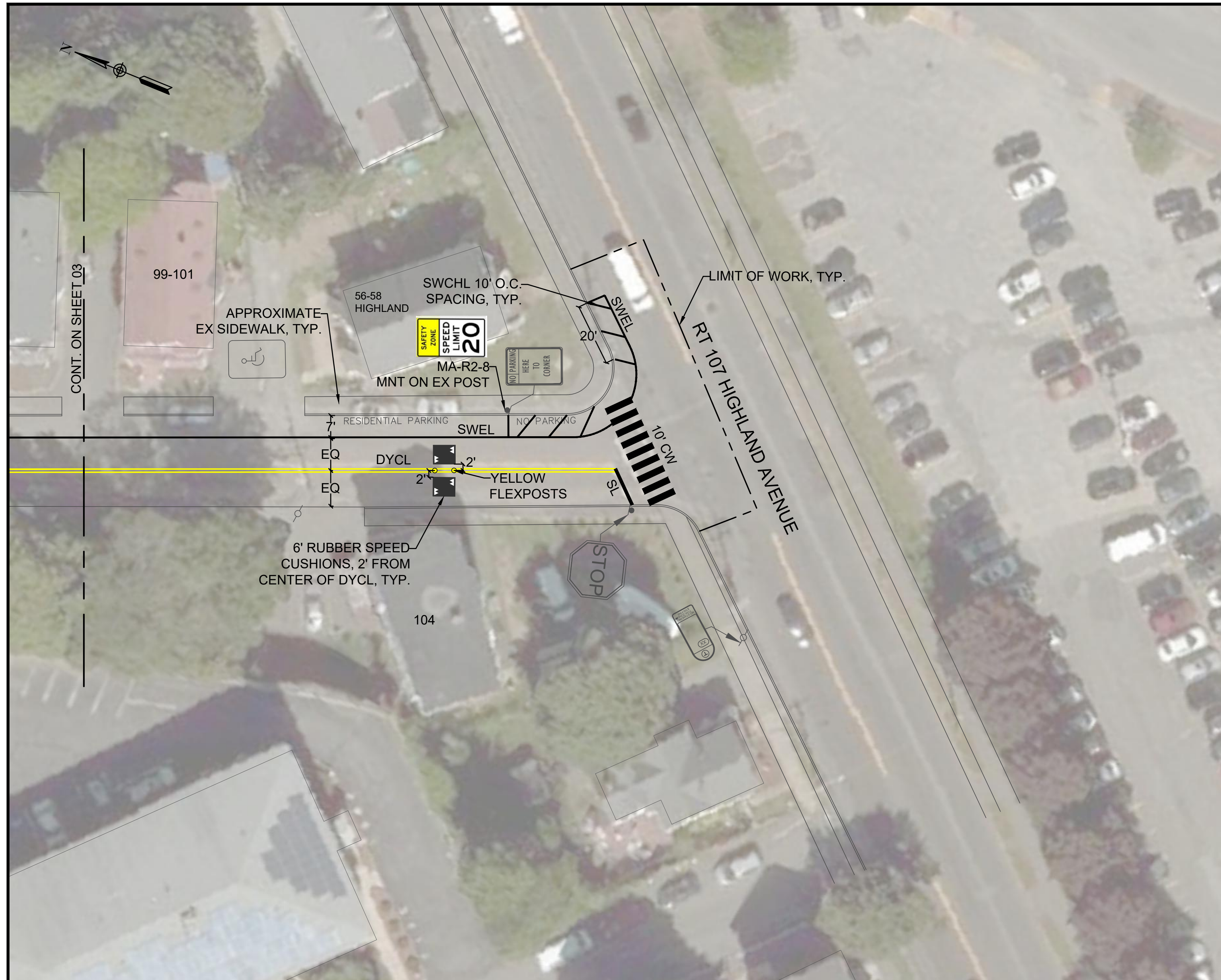


PS&E SUBMISSION

PAVEMENT MARKING AND SIGNAGE

PROCTOR STREET
CITY OF SALEM, MA

DESIGNED BY: JM
 PREPARED BY: JM
 CHECKED BY: RC
 DATE: 08/04/2022
 SHEET: 03 OF 04

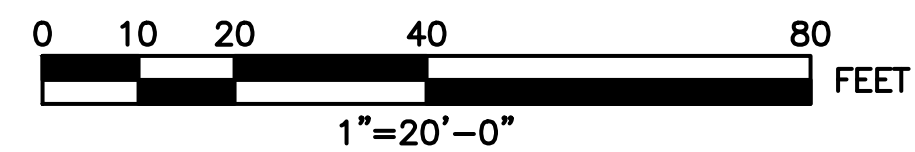


LEGEND AND ABBREVIATIONS

EXISTING	PROPOSED	
	CONT	CONTINUED
	EX	EXISTING
	EQ	EQUAL
	MNT	MOUNT
	O.C.	ON CENTER SPACING
	R	RADIUS
	R&R	REMOVE AND RESET
	TYP	TYPICAL
		NEW OR RELOCATED SIGN
		SIGN POST
		HYDRANT
		UTILITY POLE
		LIMIT OF PAVEMENT MARKINGS
		MATCHLINE
	SWEL	4" SOLID WHITE EDGE LINE
	SL	12" MINIMUM WHITE STOP LINE (UNLESS OTHERWISE NOTED)
	CW	WHITE CROSSWALK LINES, 24" WIDE 4' O.C.
	SWCHL	8" SOLID WHITE CHANNELIZATION LINE (SWCHL) 10' O.C. AT 45° UNLESS OTHERWISE NOTED
	SYCHL	8" SOLID YELLOW CHANNELIZATION LINE (SYCHL) 10' O.C. AT 45° UNLESS OTHERWISE NOTED
	DYCL	TWO 4" DOUBLE YELLOW CENTER LINES
	SYCHL	8" SOLID YELLOW CHANNELIZATION LINE
	SYCL	4" SOLID YELLOW CENTER LINE
		FLEXPOST (YELLOW OR WHITE)
		6" TEMPORARY RUBBER SPEED CUSHION

SPEED CUSHION INSTALLATION NOTES

1. INSTALL 6" WIDE TEMPORARY RUBBER SPEED CUSHIONS:
 - 1.1. 2' FROM THE CENTER OF THE DYCL
 - 1.2. MAX 4' BETWEEN CUSHIONS.
 - 1.3. 10' MIN FROM DRIVEWAYS AND WALKWAYS
 - 1.4. 20' MIN FROM CROSSWALKS AND INTERSECTIONS
5. INSTALL YELLOW FLEXPOSTS CENTERED BETWEEN THE DYCL.
6. DO NOT INSTALL TEMPORARY SPEED CUSHIONS OVER ANY VALVES, MANHOLES, DRAINAGE STRUCTURES, WATER GATES, OR ANY OTHER STREET LEVEL UTILITY.
7. IF THERE ARE DISCREPANCIES IN THE FIELD FOR SPEED CUSHION PLACEMENT DUE TO UTILITIES OR DRIVEWAYS, CONTACT THE ENGINEER.



PS&E SUBMISSION

PAVEMENT MARKING AND SIGNAGE

PROCTOR STREET
CITY OF SALEM, MA

DESIGNED BY: JM
 PREPARED BY: JM
 CHECKED BY: RC
 DATE: 08/04/2022
 SHEET: 04 OF 04

