

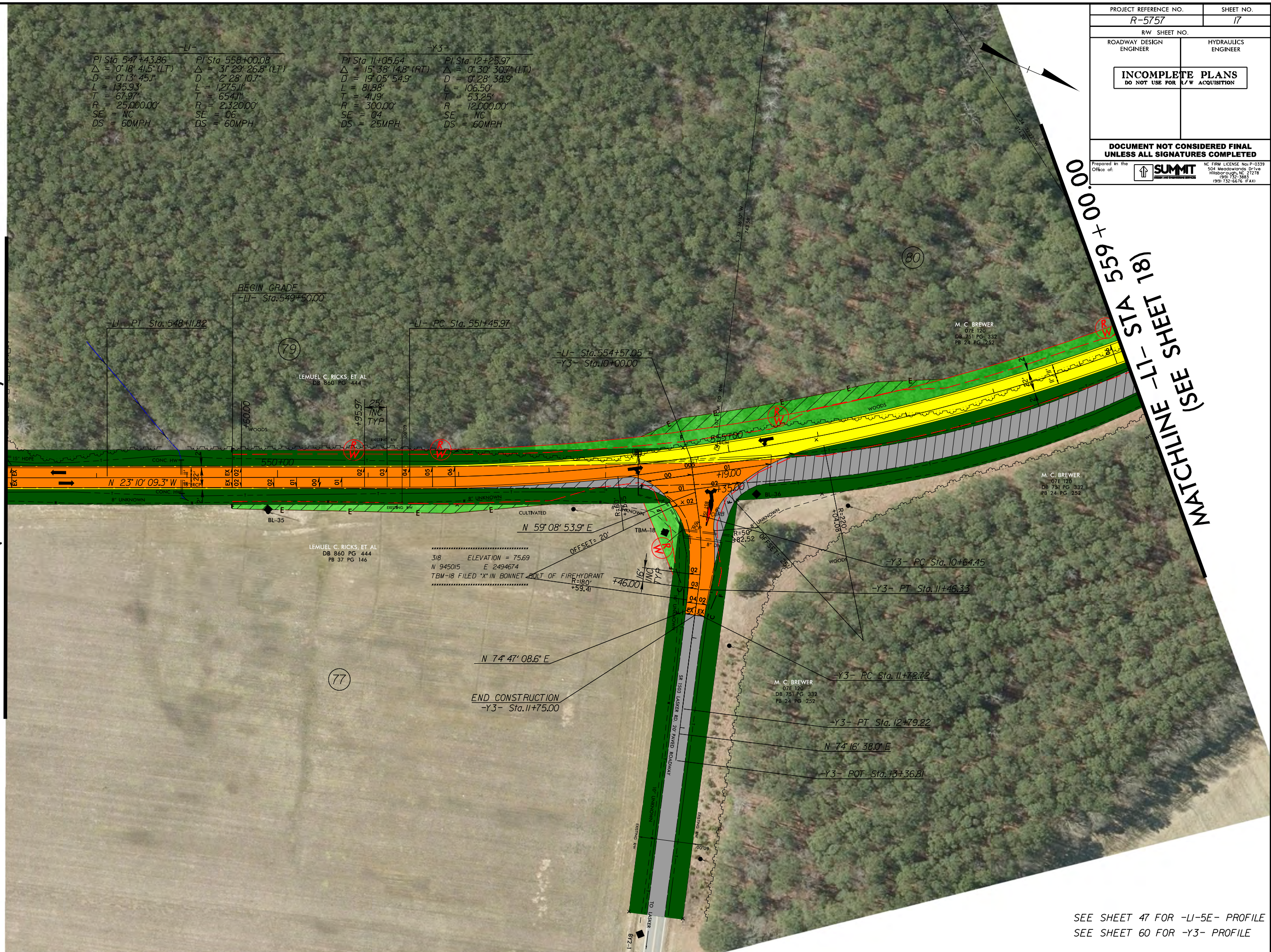
8/17/99

REVISIONS

8:55:53 R:\CADD\WORK\8911_PHM.dgn
SCHEMATIC

MATCHLINE -LI- STA 547 + 00.00
(SEE SHEET 16)

-LI-		-Y3-	
PI Sta 547+43.86	PI Sta 558+00.08	PI Sta 11+05.64	PI Sta 12+25.97
$\Delta = 0' 18' 41.5" (LT)$	$\Delta = 3' 29' 26.8" (LT)$	$\Delta = 15' 38' 14.8" (RT)$	$\Delta = 0' 30' 30.7" (LT)$
$D = 0' 13' 45.1"$	$D = 2' 28' 10.7"$	$D = 19' 05' 54.9"$	$D = 0' 28' 38.9"$
$L = 135.93'$	$L = 1,275.11'$	$L = 81.88'$	$L = 106.50'$
$T = 67.97'$	$T = 654.11'$	$T = 41.19'$	$T = 53.25'$
$R = 25,000.00'$	$R = 2,320.00'$	$R = 300.00'$	$R = 12,000.00'$
SE = NC	SE = 06	SE = 04	SE = NC
DS = 60MPH	DS = 60MPH	DS = 25MPH	DS = 60MPH



PROJECT REFERENCE NO. R-5757	SHEET NO. 17
RW SHEET NO.	
ROADWAY DESIGN ENGINEER	HYDRAULICS ENGINEER
INCOMPLETE PLANS DO NOT USE FOR R/W ACQUISITION	
DOCUMENT NOT CONSIDERED FINAL UNLESS ALL SIGNATURES COMPLETED	
Prepared in the Office of: 	NC FIRM LICENSE No: P-0339 504 Woodlands Drive Hillsborough, NC 27278 (919) 332-3883 (919) 732-6676 (FAX)

MATCHLINE -LI- STA 559 + 00.00
(SEE SHEET 18)

SEE SHEET 47 FOR -LI-5E- PROFILE
SEE SHEET 60 FOR -Y3- PROFILE