


PROJECT REFERENCE NO.	SHEET NO.
R-5757	29
RW SHEET NO.	
ROADWAY DESIGN ENGINEER	HYDRAULICS ENGINEER
<b>INCOMPLETE PLANS</b> DO NOT USE FOR A/W ACQUISITION	
<b>DOCUMENT NOT CONSIDERED FINAL</b> UNLESS ALL SIGNATURES COMPLETED	
Prepared in the Office of:	 <small>NC FIRM LICENSE No. P-0339          504 Meadows Drive          Hillsborough, NC 27278          (919) 732-3883          (919) 732-6676 (FAX)</small>

-L3-  
 PI Sta 81+99.7 Δ = 1°44'00.3" (RT) D = 0°38'11.8" L = 272.28' T = 136.15' R = 9,000.00' SE = 02 DS = 60MPH  
 PI Sta 87+24.09 Δ = 31°41'12.6" (RT) D = 4°10'55.8" L = 757.66' T = 388.79' R = 1,370.00' SE = 08 DS = 60MPH  
 PI Sta 92+07.14 Δ = 5°13'47.7" (RT) D = 2°17'30.6" L = 228.20' T = 114.18' R = 2,500.00' SE = 06 DS = 60MPH

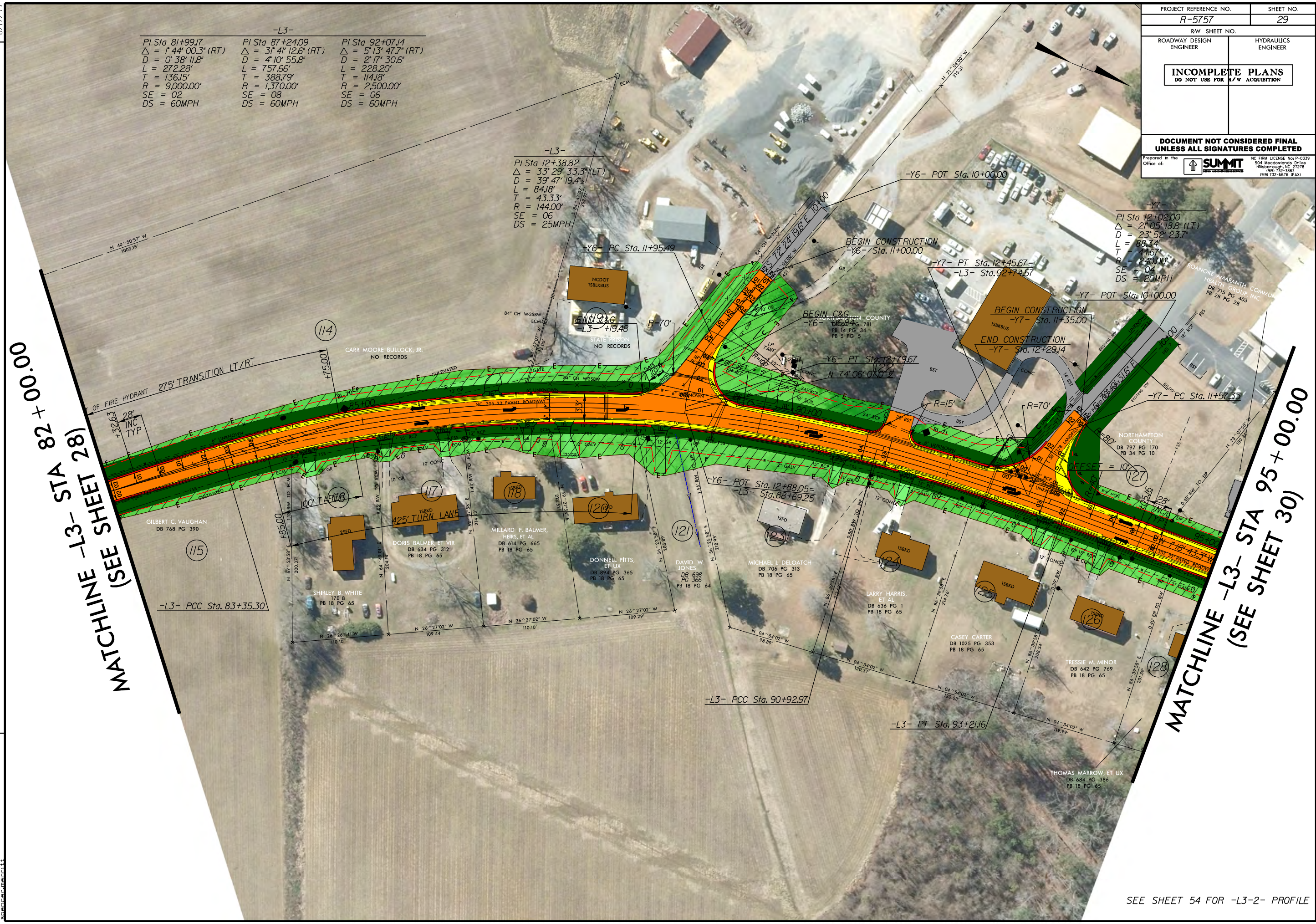
-L3-  
 PI Sta 12+38.82 Δ = 33°29'33.3" (LT) D = 39°47'19.4" L = 84.18' T = 43.33' R = 144.00' SE = 06 DS = 25MPH

-Y7-  
 PI Sta 12+02.00 Δ = 21°05'18.8" (LT) D = 23°52'23.7" L = 88.34' T = 44.67' R = 240.00' SE = 04 DS = 20MPH

MATCHLINE -L3- STA 82+00.00  
 (SEE SHEET 28)

MATCHLINE -L3- STA 95+00.00  
 (SEE SHEET 30)

REVISIONS  
 8/17/99  
 R-5757-29-1.dwg  
 8/17/99  
 R-5757-29-1.dwg  
 8/17/99  
 R-5757-29-1.dwg



SEE SHEET 54 FOR -L3-2- PROFILE