

East Spencer/Spencer Trail

Why?

PROJECT CONTEXT

This project is a mix of multi-use path along US-29, a creekside trail along Crane Creek, and options for greenway to connect to the City of Salisbury. These proposed trails are part of the regional Carolina Thread Trail network.

KEY DESTINATIONS

- Wil-Cox Bicycle and Pedestrian Bridge and Yadkin River Park
- Royal Giants Park
- Downtown Spencer and East Spencer
- The City of Salisbury

SUPPORT IN PREVIOUS PLANS

- Carolina Thread Trail: Rowan County Master Plan (2014)
- Town of Spencer Land Use Plan 2025 (updated 2022)
- Spencer and East Spencer Bicycle and Pedestrian Plan (2016)

PUBLIC INPUT

Public input from the Carolina Thread Trail Master Plan for Rowan County indicated general support for trails and the proposed Thread Trail in Rowan County. Parks, existing trails, and the Yadkin River ranked highly on desired destinations to connect by walking and biking.

Public survey responses for the Town of Spencer Land Use Plan update showed a desire for more sidewalks to improve walkability, particularly around schools, although several other issues ranked higher.

How?

JURISDICTION(S)

Town of Spencer, Town of East Spencer, City of Salisbury, Rowan County

OTHER POTENTIAL PARTNERS

- NCDOT
- Carolina Thread Trail
- Three Rivers Land Trust
- Utility/sewer companies
- North Carolina Railroad Company
- Cabarrus-Rowan MPO
- Dept. of Commerce, Creating Outdoor Recreation Economies (CORE) Program

POTENTIAL FUNDING SOURCES

Transportation Alternatives Program grants, Safe Routes to School, other state or federal

grant funding

PLANNING-LEVEL COST ESTIMATES

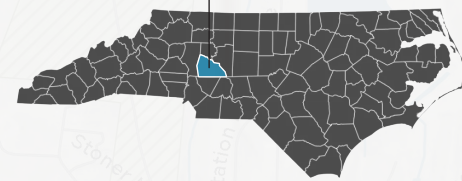
The project cost is estimated to be around \$9.4 million. For a detailed breakout of planning level costs, see Appendix A.

ROW NEEDS

Utility and sewer easement along Crane Creek is an opportunity for co-location of a greenway without acquiring more land. Other segments of the trail use NCDOT or railroad ROW.

DESIGN OPTIONS AND CONSIDERATIONS

Trail segment along creek may require floodplain study to determine optimal route, and coordination with utilities and sewer to avoid impacting any structures. Further study should be explored for optimum connection into Salisbury.

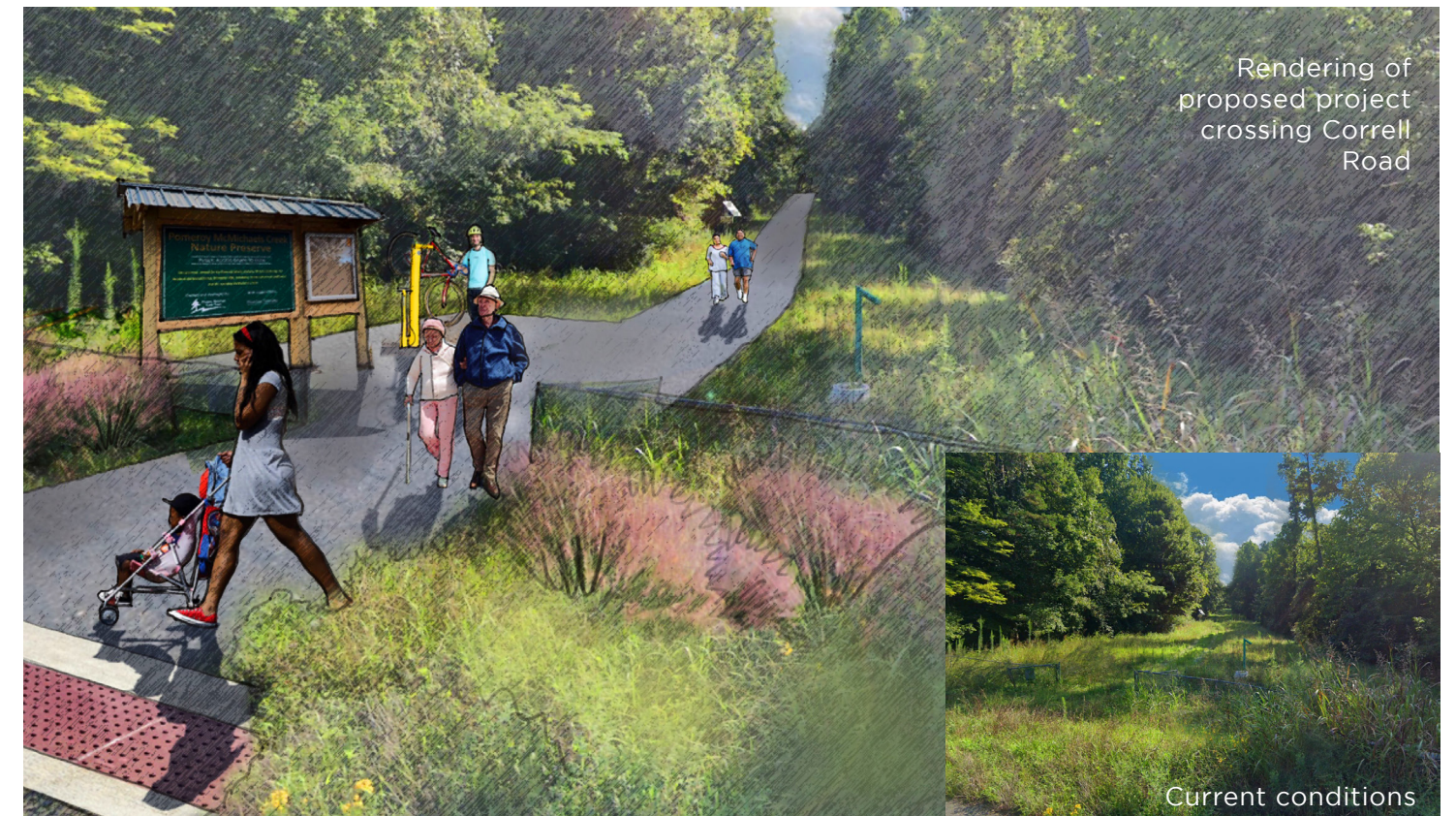


ROWAN COUNTY

TRANSPORTATION DISADVANTAGE FACTORS: EAST SPENCER

Block Group ID: 371590508003

Age 15 and Under	19% (vs NC Average of 18%)
Age 65 and Over	16% (vs NC Average of 16%)
Poverty	51% (vs NC Average of 24%)
BIPOC Population	82% (vs NC Average of 31%)
Zero-Car Households	28% (vs NC Average of 6%)
Disability Prevalence (Adult Population)	27% (vs NC Average of 16%)



Rendering of proposed project crossing Correll Road

Current conditions