
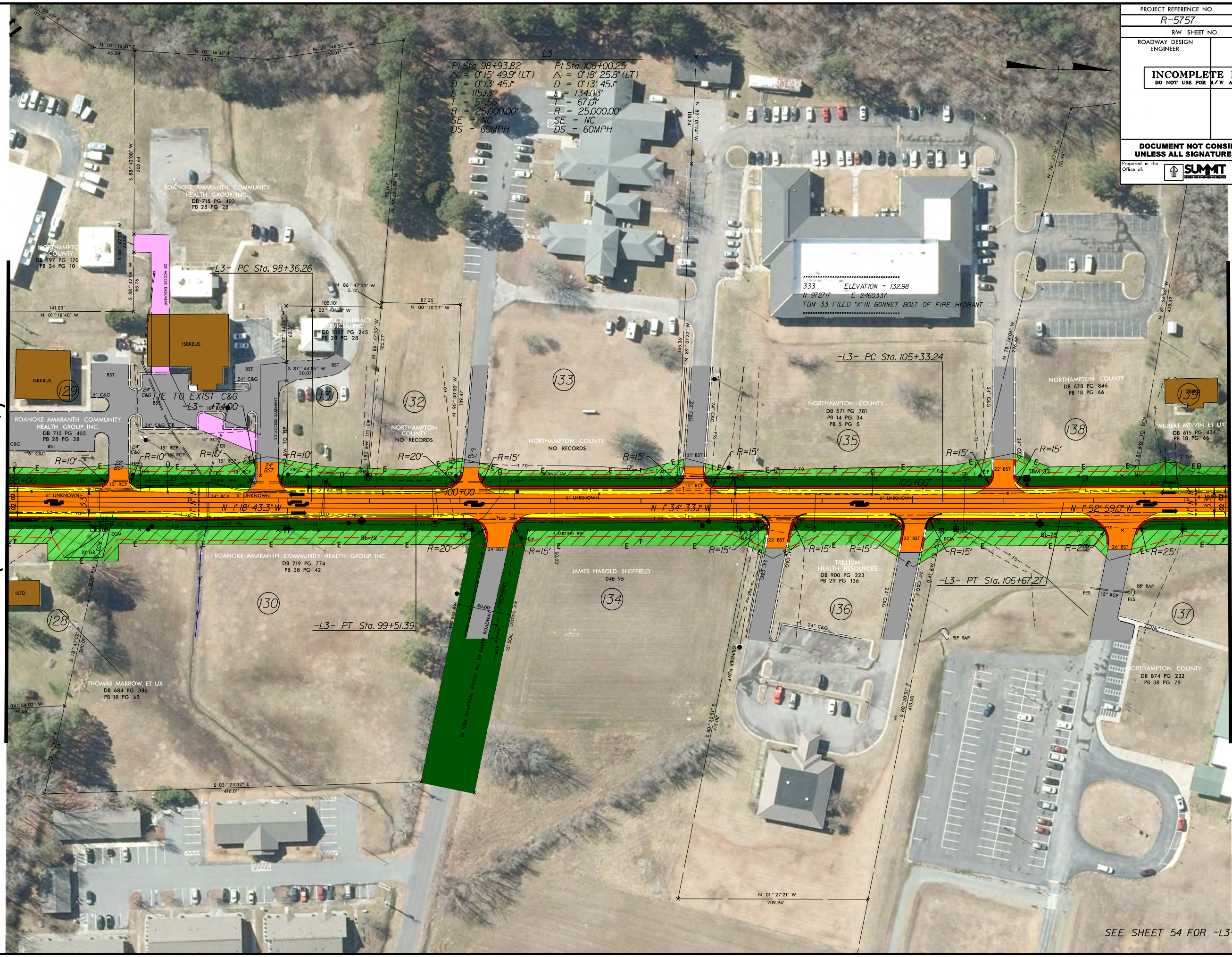


PROJECT REFERENCE NO.	SHEET NO.
R-5757	30
RW SHEET NO.	
ROADWAY DESIGN ENGINEER	HYDRAULICS ENGINEER
<b>INCOMPLETE PLANS</b> DO NOT USE FOR A/W ACQUISITION	
<b>DOCUMENT NOT CONSIDERED FINAL</b> UNLESS ALL SIGNATURES COMPLETED	
Prepared in the Office of:	 <small>NC FIRM LICENSE No. P-0339          504 Meadows Drive          Hillsborough, NC 27278          (919) 332-3883          (919) 732-6676 (FAX)</small>

MATCHLINE -L3- STA 95+00.00  
 (SEE SHEET 29)

MATCHLINE -L3- STA 108+50.00  
 (SEE SHEET 31)



-L3-

PI Sta 98+93.82 $\Delta = 0^{\circ}15'49.9''$ (LT) $D = 0^{\circ}13'45.1''$ $L = 115.13'$ $T = 57.56'$ $R = 25,000.00'$ $SE = NC$ $DS = 60MPH$	PI Sta 106+00.25 $\Delta = 0^{\circ}18'25.8''$ (LT) $D = 0^{\circ}13'45.1''$ $L = 134.03'$ $T = 67.01'$ $R = 25,000.00'$ $SE = NC$ $DS = 60MPH$
---	--

REVISIONS

R-5757-30.PHM.dgn  
 11/16/16

SEE SHEET 54 FOR -L3-2- PROFILE